



C. J. Leary & Sons, Printers



Fall River, - Massachusetts

# THE RECORD OF THE CLASS OF 1931



B. M. C. DURFEE HIGH SCHOOL

FALL RIVER, - MASSACHUSETTS





—To—

Mr. Ralph M. Small, whose relations with us as a  
counsellor and friend have ever been inspiring  
and pleasant, we, the Class of 1931,  
respectfully dedicate our  
Record Book.





## Record Book Officers

---

*Editor-in-Chief*

RITA E. HALPIN

---

*Associate Editors*

MARY ELIZABETH HOAR

RAYMOND PARLIN

---

*Business Manager*

RITA E. McMAHON

---

*Assistant Business Managers*

DORALITA McDOUGALL

ELI SIMON

---

*Assistants*

GEORGE E. MORRIS, JR.

RUSSELL L. McILWAINE

NORMAN ZALKIND

WINTHROP PARKER

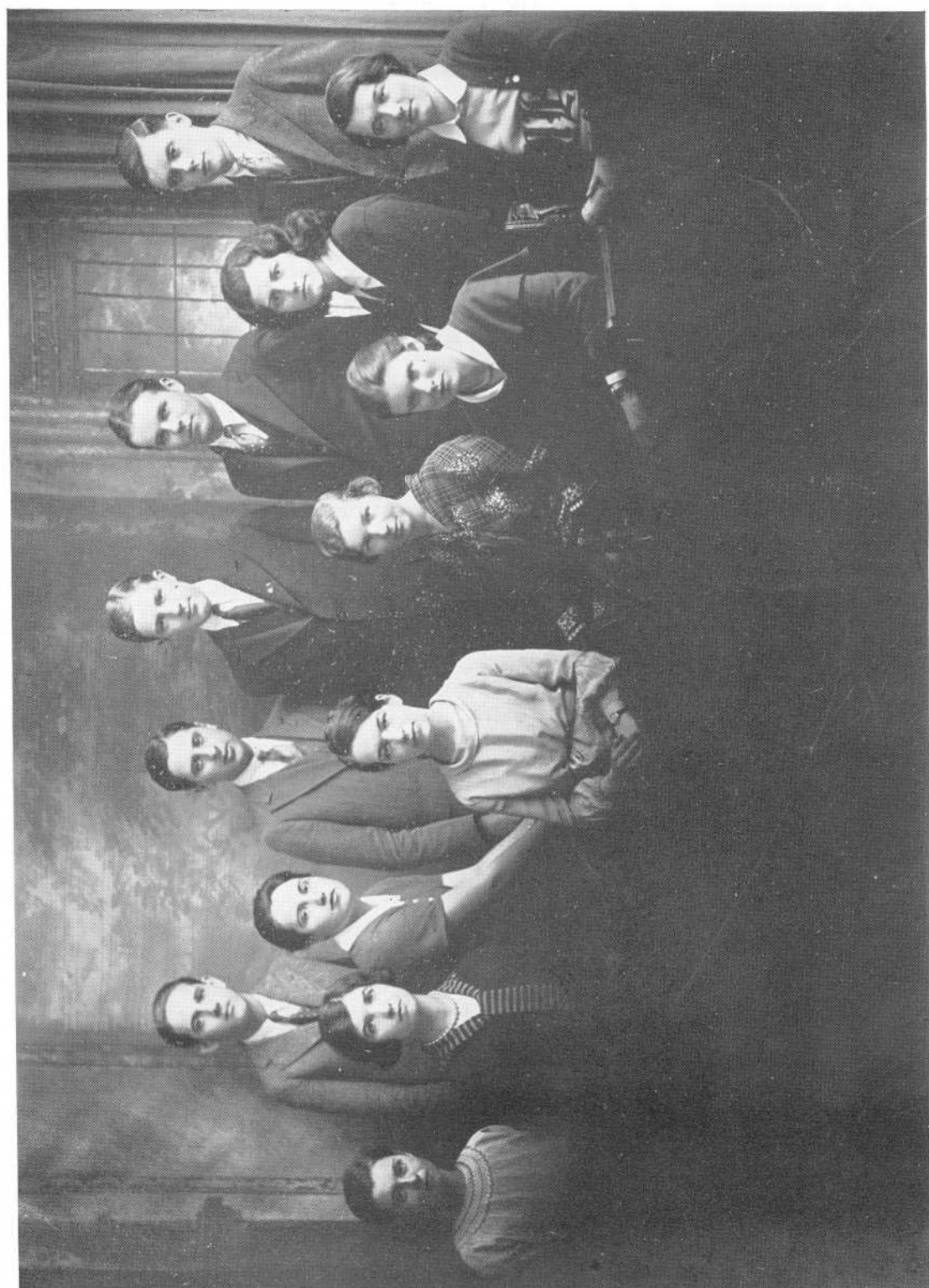
HELENE REID

ANNIE MROK

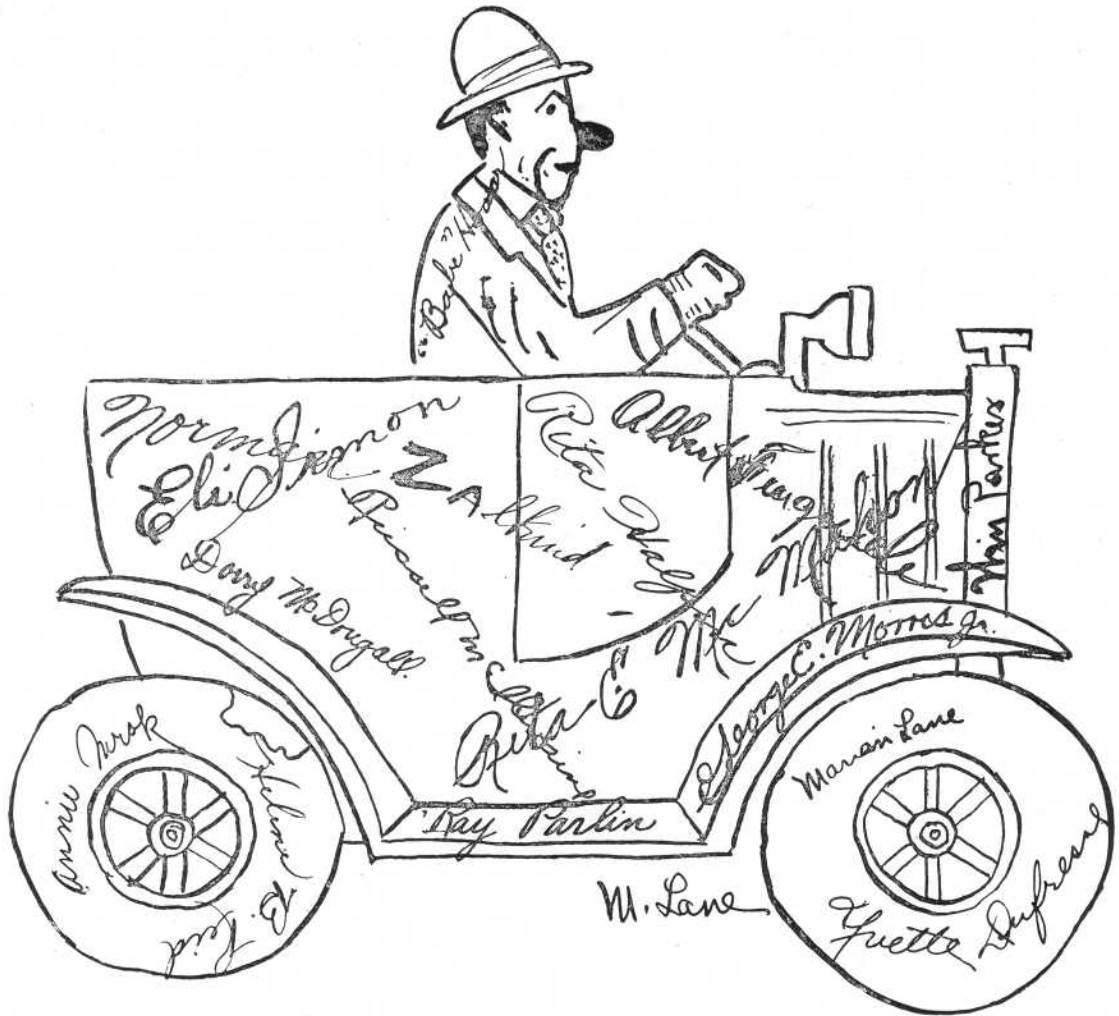
ALBERT FURGIUELE

MARION LANE

YVETTE DUFRESNE



## The Staff



---

## The Faculty

---

### PRINCIPAL

MR. CHARLES V. CARROLL

---

### VICE PRINCIPALS

MR. JOSEPH A. WALLACE

MR. RALPH M. SMALL

---

Allard, Louis A.	Forster, Gladys G.	Mixer, Virginia
Allen, Ralph C.	Foulkes, Carrie T.	Morse, Nelson C.
Andrus, Don F.	French, Henry F.	Newkirk, Ruth W.
Ashley, Myron T.	Galvin, Patricia	O'Keefe, Catherine E.
Bent, Eugenie W.	Garvey, Callanan	O'Leary, Mildred J.
Brightman, Ernest L.	Gormley, Lillian M.	O'Neil, Isabel
Campbell, Emily B.	Gottwald, Frederic J.	Orcutt, Leslie W.
Caron, Marie E. A.	Grant, Grace M.	Pickup, Herbert W.
Carpenter, Mary L.	Harlowe, Mabel	Pratt, F. Antoinette
Carroll, Joseph O.	Harrington, John J.	Pritchard, Florence G.
Carroll, Mildred V.	Hickey, Helen M. C.	Ramsay, Mabelle E.
Chase, Winifred F.	Hilliard, Nellie S.	Robbins, Mabel S.
Chisholm, William J.	Hoffman, Lillian L.	Seagrave, Sylvia W.
Churton, Ethel	Jouett, Blanche I.	Shea, Henry J.
Cleare, William M.	Judge, Mary E.	Smith, Harriet A. M.
Coggeshall, Dexter E.	Judge, Vera	Smolensky, Hilda I.
Cole, Lillian F.	Kernan, Marion E.	Spring, Mabel A.
Collins, Helen S.	Lane, Frank D.	Sullivan, Catherine L.
Connors, George L.	Langford, Alice G.	Sullivan, Daniel J.
Connors, Mary B.	Laporte, Louise C.	Sullivan, Mary H.
Cook, Berton E.	Lautel, Olga A.	Thompson, Marion R.
Coyle, George F.	Lawlor, Joseph J.	Torphy, Marion L.
Crowley, John T.	Lomax, Katherine	Townsend, Ella L.
Cyr, Rosamonde D.	Lord, John G. E.	Townsend, John M.
Davis, E. Christine	Lynch, Harry P.	Vosburgh, Ruby M.
DesMarais, Louise E.	MacDonald, Margaret E.	Walsh, Anna F.
Dolan, Mary A.	Maranpot, Raymond P.	Wellington, Barbara
Dow, Ruth N.	McCarty, Anna G.	Williston, Amasa F.
Driscoll, Mary E.	McHale, Rose E.	Woods, William J.
Duffy, Andrew L.	McQuillan, Mary A.	Wightman, Lillian
Earle, Charles C.	Miles, E. Estelle	Withrow, Helena H.
	Mitchie, George A.	

---



—In Appreciation—

of years of patient and ceaseless effort, we,  
the members of the Class of '31, thank Mr.  
Harry P. Lynch for his interest in our class  
and yearly publication.

—The Editor.





## Class Officers

---

FRANCIS V. HANIFY, *President*

GRACE McQUILLAN, *Vice President*

ANNIE MROK, *Secretary*





---

---

# HALL OF FAME

FRANCIS V. HANIFY

NORMAN M. ZALKIND  
JAMES W. CARNEY  
KATHLEEN ASHWORTH

YVETTE DUFRESNE

RITA E. HALPIN

MARGARET A. HALPIN

GRACE McQUILLAN

HELENE REID

RITA McMAHON

WILLIAM HACKING

JOSEPH KEEFE

RUSSELL L. McILWAINE

A PROX '51



ALICE ADAMS

Commercial Club 4

VINCENT EDWARD AHEASY

*"Vin" "Red"*

Tennis 3  
Dramatic Club 4  
Commercial Club 4  
Football 4



EARL W. AINSWORTH

*"Wes"*

Track 3,4

ROBERT E. ALLCOCK

*"Bob"*

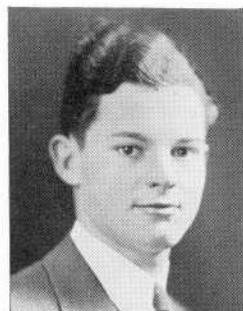
Commercial Club 4  
Home Room Director 3



LILLIAN ALLWOOD

*"Lil"*

Glee Club 3  
Home Room Director 2  
Commercial Club 2,3,4  
Dramatic Club 4  
Secretary Commercial Club 3

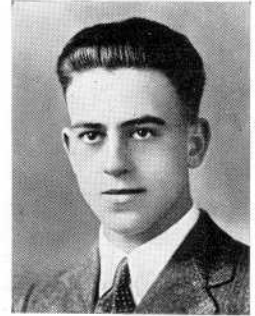


ROBERT ALMY

*"Bob"*



FREDA ALTSHULLER  
*"Free" "Freddie"*



RAYMOND A. AMIOT  
*"Ray" "Check"*  
 Baseball 3,4



EDNA ELIZABETH ANDERSEN  
*"Ed"*



ARTHUR MASSE ARRUDA



JAMES ARRUDA



LEO ARSENAULT



KATHLEEN ANN ASHWORTH

*"Kay"*

Home Room Director 1  
Chaminade Club 2  
Secretary S. A. A. 2  
Vice President S. A. A. 3  
President S. A. A. 4  
Dramatic Club 3,4  
Senior Choir 4



PHYLLIS MAUD ASHTON



RAYMOND AUCLAIR

*"Ray"*



RAYMOND JOSEPH AUDET

*"Ray" "Slicker"*



AMILE AYASH



MICHAEL AYASH



CARL AYERS



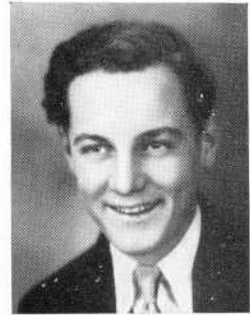
CHARLES BAXTER BALL



ELIZABETH HELEN BARNES

*"Libby"*

Hilltop 4  
Library Aid 4



ARTHUR FRANCIS BARRIAULT

*"Frank" "Art" "Barry" "Francis"*

Orchestra 2  
Basketball 3  
Football 4  
Gift Committee 4  
Senior Debating Contest 4



GEORGE H. BATES

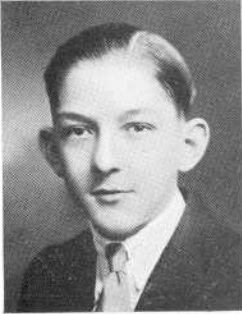
Home Room Director 2



BERTHA BEDRICK

*"Bert"*

Commercial Club 2,3,4  
Dramatic Club 3,4  
Forum 4  
French Club 4  
Hiking Club 4  
Gift Committee 4  
Dancing Club 4



ALPHONSE BILODEAU



MARIE BELLEFEUILLE



DORIS ANNETTE BERARD  
*"Dot"*  
 Commercial Club 2, 3, 4



ARTHUR BERRY



MARY BEZUBKA



RUTH BILSKY  
 French Club 4



GEORGE ARTHUR BISHOP, JR.



MARY LOUISE BLAKE



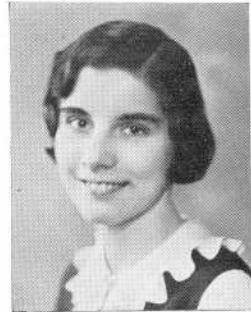
AGNES BOARDMAN  
*"Shorty"*



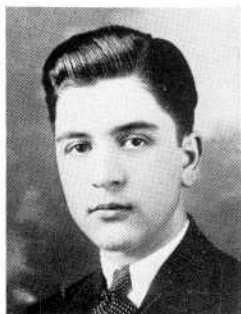
PAUL BOARDMAN  
*"Porkie" "Jake"*



MARIE BOISELLE  
Library Aid 4



MILDRED BOODRY



MANUEL BOTELHO



BEATRICE BOURGEOIS

*"Bea"*

French Club 4  
Chemistry Club 4



DOROTHY BOWSER

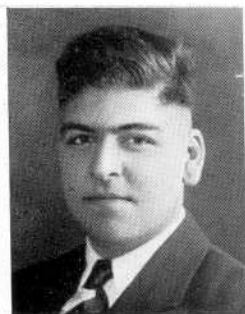
*"Dot"*

Commercial Club 2, 3, 4



CATHERINE MARY BOYLE

*"Kay"*



GEORGE BOZIAN

Home Room Director 3  
Hilltop Photographer 3, 4

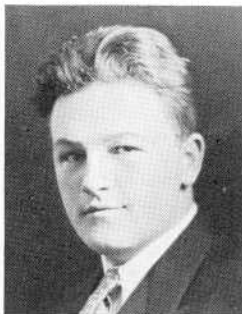


FRANK BRADBURY

*"Red" "Brad"*

Chemistry Club 4





CHARLES LUTHER BRALEY

Football 3  
Dramatic Club 4  
Commercial Club 4



CATHERINE BREHENY

*"Kay"*



ELIZABETH BRIDGE

*"Betty"*

ISADORE MALCOLM BROTKIN

*"Brot"*

Dramatic Club 4  
Chemistry Club 4  
Band 4  
Orchestra 4  
Forum 1, 2, 3, 4



FRANK BROWN

GRACE RITA BROWN

*"Brownie"*

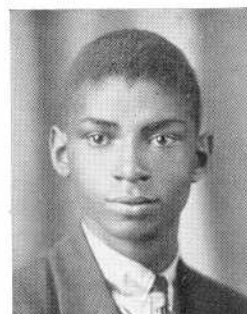




JOHN LOUIS BROWN

*"Johnny" "Brownie"*

Football 3, 4  
Basketball 3, 4  
Baseball 4



WILLIAM H. BROWN

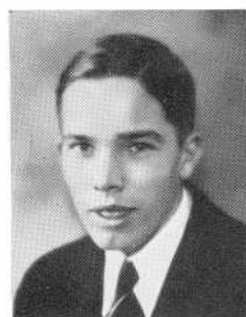
*"Bill"*



WILLIAM GORDON BRYDEN

*"Bill" "Billy"*

Dramatic Club 4



EDMUND BUCKLEY



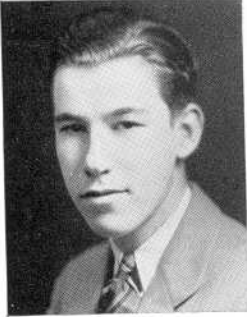
MARY MARGARET BUCKLEY

*"Bucky"*

Commercial Club 2, 3, 4  
Dramatic Club 4  
Secretary Commercial Club 4  
Secretary Class 3  
Senior Choir 4



STANLEY BUGARA



JOHN J. BURKE, JR.



MARY RITA BURROWS



JOSEPH CAHILL  
"Joe"



FRANCIS PIMENTAL CALOURO



JAMES WILLIAM CARNEY, JR.  
"Jim"

President Class 2, 3  
Chairman Dance Committee 4  
Debating Team 4  
Dramatic Club 4  
President Library Aids 4  
Forum 3  
Senior Social Committee 4



JOSEPHINE CAROSELLI  
"Joe"



ALFRED EDWARD CARREIRO



CLAYTIE M. CARTER  
Commercial Club 4



MARGARET MARY CASSIDY  
*"Peg"*



MABEL E. CHACE  
*"Chacy"*



GEORGE W. CHAPMAN



ANNA CHERNOCK  
Forum 2, 3, 4  
Secretary Forum 3  
Recorder Dramatic Club 4  
Photograph Committee 4  
Orchestra 2, 3, 4  
Manager 4



### MIRIAM BORIS CHUCNIN

Orchestra 1, 2, 3  
Chaminade 3  
Forum 1, 2, 3, 4  
Dramatic Club 3, 4  
Assistant Editor Hilltop 3  
Photograph Committee 4



### ELEANORE MARIE CLARKE

*"Lo-Lo"*

Commercial Club 2, 3, 4  
Treasurer Commercial Club 4



### JESSIE CLARKE

Chaminade Club 4  
Senior Choir 4



### PHYLLIS CLARKE

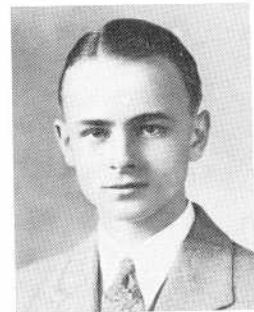
*"Phyll"*



### BERNICE JULIA CLEAVES

*"Bernie"*

Commercial Club 3, 4



### JOHN CLORITE



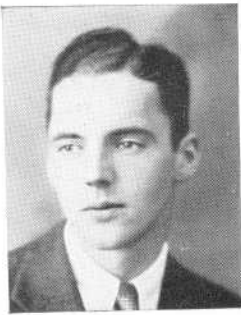
MARJORIE COGGESHALL

Home Room Director 3  
Chairman Advisory Committee 4



LEONARD PARKER COHEN

Football 3



DANIEL JOSEPH COLLINS, JR.

*"Danny"*



MARY LOUISE COLLINS

Home Room Director 2



MARGARET PATRICIA CONNOLLY

*"Peg"*



MARGARET FRANCES CONNOR

*"Peggy"*



THOMAS HILARY CONROY

Science Club 1  
Forum 2, 3  
French Club 4

MARJORIE ALICE COOK

*"Marge" "Cookie"*

Home Room Director 3  
Advisory Committee 4  
Commercial Club 2, 3, 4  
Dramatic Club 4



YVONNE RITA CORNELLIER

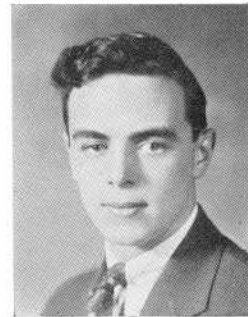
*"Vonny"*

Commercial Club 3, 4

ARTHUR CORNER

*"Art"*

Chemistry Club 4



ARTHUR F. COSGROVE

Home Room Director 3

LIONEL J. COSTA





EDWARD COSTAR

*"Ed" "Eddie"*

Track 2  
Basketball 3  
Football 3  
Dramatic Club 3, 4



JOSEPH G. COTE

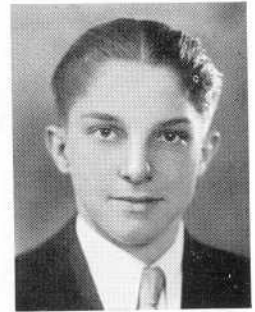
*"Joe"*



BERTHA HILDA COULTER

*"Bert"*

Commercial Club 2



EVERETT C. COWELL

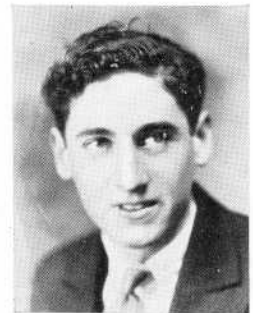
*"Ev"*



MIRIAM ELAINE CRANSTON

*"Mimi"*

Commercial Club 3, 4



WILLIAM F. CROKE

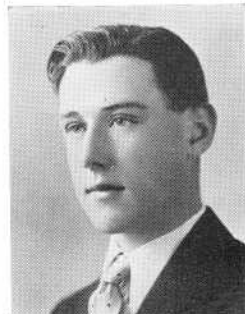




LOUISE MARY CROMPTON

*"Lou"*

Home Room Director 3  
Commercial Club 4  
Dramatic Club 4



JAMES DANIEL CROSSON

*"Sonny"*

THOMAS CROTTY

*"Tom" "Tommy"*

Forum 2, 3, 4



HELEN MARIE CROWLEY

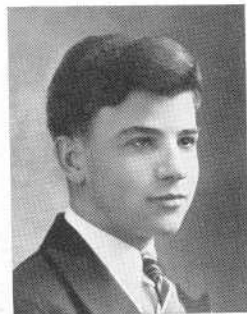


MILDRED DOROTHY CURRY

EDGAR JOSEPH CYR

*"Ed"*

Band 4  
Orchestra 2, 3, 4





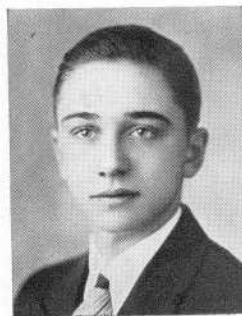
LOUIS BERNARD DEVINE, JR.  
*"Louie" "Lou"*  
 Forum 2, 3, 4



ROGER DI NUCCI, JR.  
 Band Leader 4  
 Dramatic Club 4  
 Orchestra 2, 3, 4



CECELIA FRANCES DION



CHARLES C. DIXON  
*"Dix"*



WILLARD F. DIXON  
*"Dixie"*  
 Home Room Director 3, 4  
 Library Aid 4



CHARLES DE VILLERS



MILDRED DOANE  
*"Milly"*



ALPHONSE V. DOMINQUE



CATHERINE M. DONNELLY  
*"Kay" "Kitty"*

Home Room Director 2  
Cheerleader 3  
Forum 2, 3, 4  
Chaminade Club 3, 4  
Senior Choir 4  
Dramatic Club 4



JAMES JOSEPH DOOLAN



CLEMENT JOSEPH DOWLING

Dramatic Club 4



FLORENCE ANGELA DROGUE  
*"Flossie"*

Senior Choir 4



YVETTE JULIET DUFRESNE

Dramatic Club 3, 4  
President Dramatic Club 4  
Senior Choir 4  
Record Book Staff 4  
Home Room Director 4



MARY FRANCES DUMAS

Glee Club 3, 4  
Senior Choir 4



ANNIE BERNICE EDWARDS

*"Eddy" "Ann"*

Girl Councillor S. A. A. 2  
Dramatic Club 3, 4  
Vice President Commercial Club 3  
Commercial Club 2, 3, 4

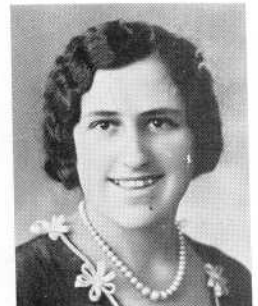


ROBERT W. EOLIN

*"Bill"*



AIDA FARINHA



VIRGINIA FARNHAM



MARION FRANCES FAY  
*"Snuggles"*  
 Commercial Club 2, 3, 4



DAVID FEINBERG  
 Tennis Team 3  
 Captain Tennis Team 4



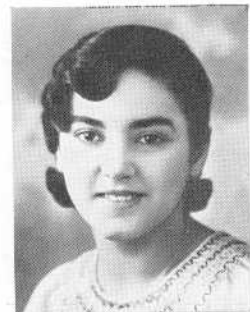
SELMA FELDMAN  
 Home Room Director 3, 4  
 Commercial Club 2, 3, 4



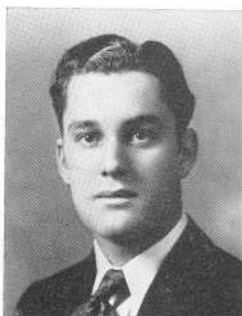
ALBERTA FERGUSON  
*"Fergie"*  
 Dramatic Club 4  
 Dance Committee 4



FRANCIS JOSEPH FERRANCE  
 Baseball 3



REONA REA FERNANDES  
 Commercial Club 3, 4



MANUEL FERREIRA

*"Manny"*

Basketball 3  
Football 3, 4  
Tennis 4



DOROTHY CROMWELL FIELDEN

*"Dolly"*

Home Room Director 2, 3, 4  
Dance Committee 4



MARGARET M. FLANAGAN

*"Peg"*



AGNES M. FLANNERY

*"Joan"*



INEZ DOROTHY FLORES

*"Sylvia"*

Cheerleader 3, 4  
Advisory Committee 4  
Dramatic Club 3, 4  
Senior Choir 4



MARY RITA FLYNN

*"Rita" "Reet"*

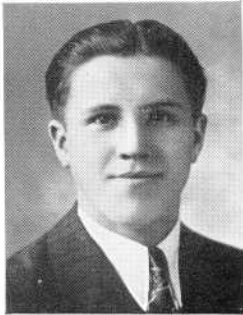
Home Room Director 1, 3  
Library Aid 4  
Dramatic Club 4



ALMA ELIZABETH FOLEY  
Dramatic Club 4



FRANCES L. FORMAN  
*"Franny"*  
French Club 4



EDWARD J. J. FORTUNA  
Advisory Board 4



JOHN JOSEPH FOX  
*"Johnny"*



MARY L. FOX  
*"Foxy"*



HENRY F. FRENCH, JR.



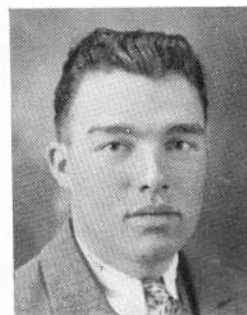
DAVID JOHN FRIAR

*"Dave"*Dramatic Club 4  
Hilltop 4

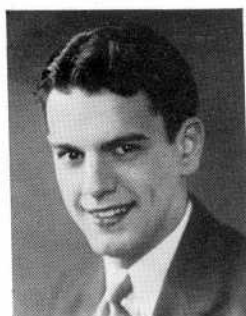
DOROTHY FRIEDMAN

*"Dot"*Commercial Club 2, 3, 4  
Glee Club 3

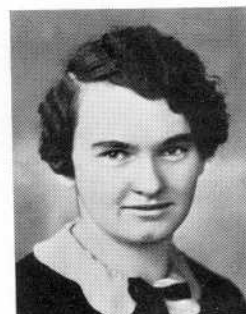
ALBERT W. FURGUELE

*"Al"*Record Book Staff 4  
Dramatic Club 4

OSCAR N. GAGNON



DAVID GARRICK

*"Dave"*Home Room Director 2  
Basketball 4

ELLEN RITA GIBBONS

*"Ella"*Commercial Club 3, 4  
Home Room Director 3





ELEANOR JOSEPHINE GIZZI  
*"Nora" "El"*



ETHEL M. GOLDSTEIN  
*"Goldy"*  
 Senior Choir 4  
 Dramatic Club 4  
 Chaminade Club 4



MILTON GOLLIS



ALFREDA ELIZABETH GOLZ



MANUEL P. GONCALO



ELIZABETH M. GOODWIN  
 Commercial Club 2, 3, 4



BEATRICE S. GOYETTE  
*"Beat"*



ANNA THERESA GRACE  
Commercial Club 2, 3, 4



GLADYS E. GRAY



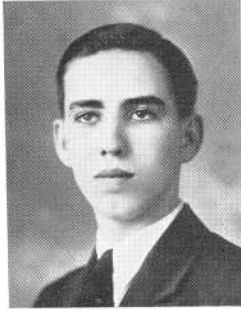
EDWARD SHAY GREENWOOD  
*"Darby"*



GLORIA G. GRENIER  
French Club 4  
Hilltop Staff 4



PAUL V. GRIFFO



JOSEPH FRANCIS GRONDIN  
*"Joe"*

WILLIAM EDWARD HACKING, JR.  
*"Bill" "Ed"*

Track 2, 4  
Football 3, 4  
Baseball 3, 4  
Basketball 3, 4  
Captain Football 4



ROGER PLUMMER HALL

Senior Dance Committee 4  
Dramatic Club 3, 4

ALICE L. M. HALLISEY  
*"Allie" "Al"*  
Commercial Club 4



MARGARET AMELIA HALPIN  
*"Marg"*

Hilltop 3, 4  
Circulation Manager Hilltop 3  
Editor-in-Chief Hilltop 4

RITA EILEEN HALPIN  
Hilltop 3, 4  
Associate Editor Hilltop 4  
Record Book Editor 4  
Pin and Ring Committee 4  
Photograph Committee 4





MURIEL ARLINE HAMILTON

Commercial Club 3, 4



CHARLES LAWRENCE HAMPSTON

*"Charlie"*

FRANCIS VINCENT HANIFY

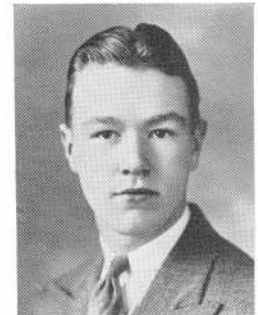
*"Frank"*

President Senior Class 4  
 President Senior Forum 3  
 Secretary Senior Forum 3  
 Chairman Junior Pin and Ring Committee 3  
 Boy Councillor S. A. A. 2  
 Home Room Director 2, 3  
 Dramatic Club 4



DUNCAN CHARLES HANLEY

Dramatic Club 4



MARGUERITE MARY HANNON

Chaminade 3  
 Dramatic Club 3, 4



FRANCIS LAWRENCE HARRINGTON

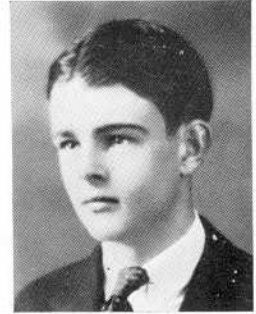
*"Frank"*

Pin and Ring Committee 3  
 Photograph Committee 4  
 Home Room Director 4



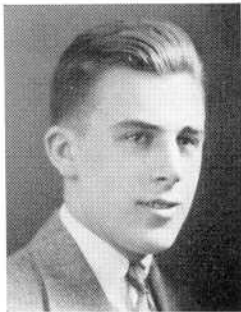


IRENE ELIZABETH HARRINGTON

HENRY ALOYSIUS HARRISON, JR.  
*"Heinie"*

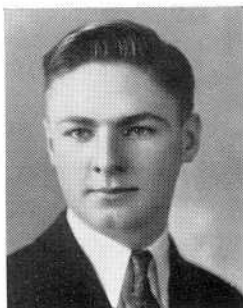
MARJORIE BOOTH HART

Commercial Club 2, 3, 4

SAMUEL HART  
*"Sam" "Hartie"*Home Room Director 1, 2  
President Electrical Club 4

GORDON BATEMAN HARVEY

EDYTHER HASLAM  
*"Hassie"*Hiking Club 4  
Chemistry Club 4  
French Club 4



ROLAND RALPH HATFIELD



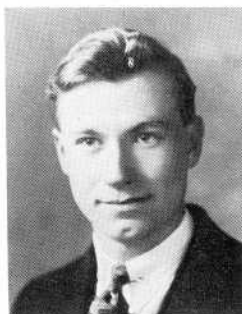
CATHERINE BARBARA HENNESSY  
*"Cath" "Kay"*  
 Commercial Club 3, 4



MICHAEL JOHN HERLIHY  
*"Jack"*



LESTER BENJ. HETHERINGTON  
 Football 4



RICHARD HEYS  
*"Dick"*  
 Commercial Club 3, 4



DOROTHY SARAH HEYWOOD  
*"Dot"*  
 Commercial Club 4



PEARL BEAUMONT HEYWORTH



SYLVIA EVELYN HILLMAN



MARY ELIZABETH HOAR

*"Babe"*

Sophomore Reporter Hilltop 2  
Home Room Director 2, 3  
Associate Editor Hilltop 4  
Advisory Committee 4  
Associate Editor Record Book 4



KATHERINE LYDIA HOGAN

*"Kay"*

Basketball 4



FRANCIS JAMES HOLTHAM

*"Frank" "Holtie"*

Orchestra 2, 3, 4  
Commercial Club 2, 3, 4  
Band 4



ROSE MURIEL HORVITZ

*"Rosie"*

Commercial Club 3, 4



WALTER EDWARD HOWARD  
*"Walt" "Howie"*



WINIFRED OLIVE HOWELL  
*"Win" "Winnie"*



EDNA RUTH HOYLE  
 Home Room Director 1  
 Commercial Club 2



LYNWARD WALLWORTH HUNT  
 Commercial Club 4



WILLIAM FRANCIS HUSSEY  
*"Bill"*  
 Home Room Director 2, 4  
 Forum 3  
 Dramatic Club 4  
 Representative to Bristol County  
 Interscholastic League 3



GEORGE MILTON HUTCHINSON  
*"Milt"*





PHYLLIS ARLENE IBBOTSON  
*"Phyll"*



LILLIAN ISIDORIO  
*"Lil"*



MARION ISSERLIS  
Home Room Director 3  
Dramatic Club 3  
Glee Club 3



HELENA F. JAMES



CLARENCE EUGENE JENKS



GLADYS LOUISE JOHNSON



MILDRED LOUISE JONES

Commercial Club 2, 3, 4



ANN KAPLAN

Commercial Club 2, 4  
Chaminade Club 3



JOSEPH GILBERT KEEFE

*"Joe"*

Football 3, 4  
Baseball 3  
Captain Baseball 4  
Gift Committee 4



GRACE VIRGINIA KELLY



MARY CATHERINE KELLY

*"Ry"*

ELINORE MARIE KENNEDY

Dramatic Club 4





JAMES EDWARD KENNEDY

*"Jim" "Ken"*

Home Room Director 3  
Commercial Club 4



GENEVIEVE MARIE KENNEY

*"Gen"*

Library Aid 4



RITA VIRGINIA KENNY

*"Ken" "Kennie"*

Home Room Director 4

GRACE KERNES

*"Gracie" "Grock"*

Commercial Club 2, 3, 4  
Dramatic Club 3  
Forum 2, 3, 4  
Glee Club 3  
Cheer Leader 3  
Hilltop Accountant 4



HAZEL VIRGINIA KERSHAW

Commercial Club 3, 4

ANNA CECILE KIENCKE

Dramatic Club 3, 4  
French Club 4  
Forum 2, 3, 4



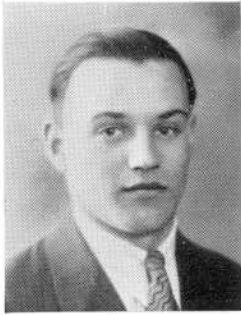


MARY F. KITECK

French Club 4

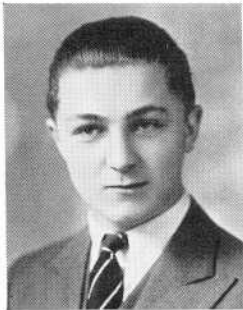
WALTER JOSEPH KLUZ  
"Walt"

Forum 4



BERNARD KOSIOR

MARY JOSEPHINE KOZAK



MILTON MICHAEL KOZAK

JOSEPH THOMAS KRET





FRANCIS McKENNA LABRIE

MARIAN B. LANE  
"Tige"

Hilltop Staff 3  
Record Book Staff 4  
Cheerleader 3, 4  
Dramatic Club 4  
Senior Dance Committee 4

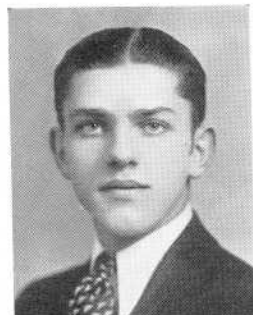


WILLIAM ARTHUR LAMBERT  
"Bill"

Baseball 1

CELINE ANNA LARRIVEE

President French Club 4

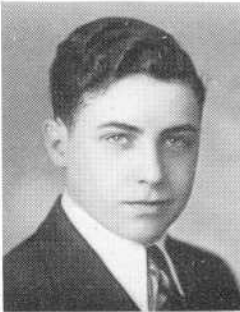


AURELAND LASKOWSKY

Band 4

ELEANOR DOLORES LAVIGNE  
"El"





HERVIN RICHARD LAVOIE  
*"Herv"*  
 French Club 4



ANN PATRICIA LAWRENCE



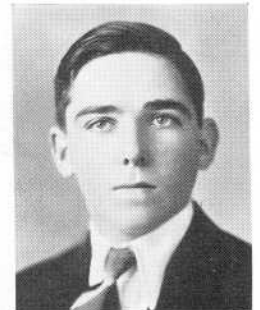
BEATRICE E. PATRICIA LEACH  
*"Bea" "Bebe"*

LILLIAN T. LECLAIR  
*"Lil"*

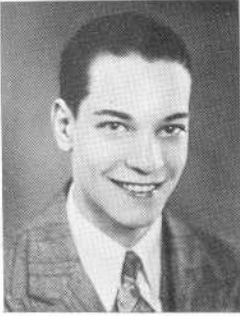
Dramatic Club 3, 4  
 French Club 4  
 Home Room Director 3



ROSA LEITE



JAMES EDWARD LENAGHAN



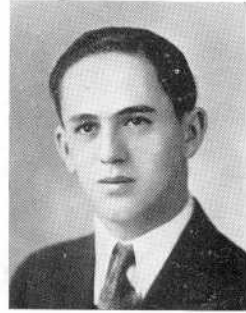
ALFRED GEORGE LESIEUR  
Home Room Director 2  
Commercial Club 4



FLORENCE LOUISE LEWIS



PALMEDA LIMA  
Commercial Club 3, 4



MILTON LINCOLN

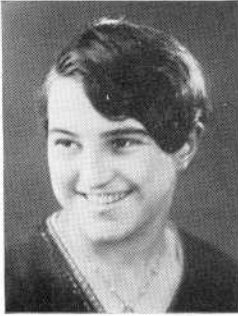


SAUL J. LIPIS

SONIA JEANNETTE LITWAK  
"Sonny"

Orchestra 2, 3, 4  
Ensemble 2, 3, 4  
Chaminade 3, 4  
Secretary-Treasurer Chaminade 4  
Dramatic Club 3, 4  
Senior Choir 4





YVETTE ANN LORD



HUGH MAIR LOUDEN  
*"Hughie"*



ANN VALENTINE LOWE  
*"Jackie" "Ann How"*



WILLIAM FRANCIS LYONS  
*"Bill"*

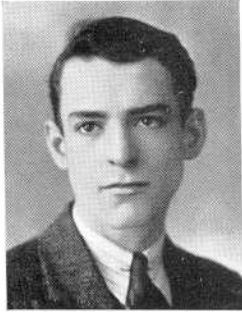


JEAN WILSON MacLEOD  
Dramatic Club 3, 4



PAULINE CLAIRE MALLOY  
*"Paul"*



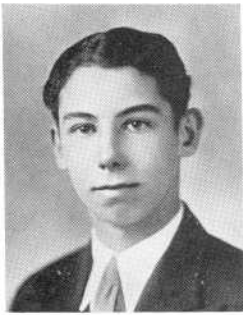


JOSEPH JEREMIAH MALVEY  
*"Joe"*

Home Room Director 3  
Basketball 4



BERYL L. THERESE MANCHESTER



GILBERT A. MANCHESTER



KATHERINE ALMY MANCHESTER  
*"Kitty" "Kate"*

Commercial Club 2, 3, 4

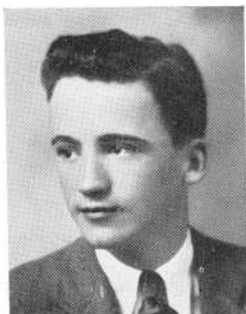


LOUISE MARTIN

Dramatic Club 4



ROBERT WILLIAM MARTIN



WILLIAM JOSEPH McAVOY

*"Mc" "Bill"*

Home Director 3, 4  
Boy Councillor S. A. A. 3, 4  
Advisory Committee 4  
Track 3, 4



MARY E. G. McCONNELL

*"May" "Buddie"*

Drum Major Band 4  
Cheerleader 3, 4  
Dramatic Club 4  
French Club 4  
Basketball 4



CORA McCULLOUGH

*"Mac"*

Commercial Club 3, 4



DORALITA McDOUGALL

*"Dorry"*

Home Room Director 3  
Hilltop 4  
Assistant Business Manager Record Book 4



ELIZABETH M. McDOUGALL

*"Dot"*

HELEN LOUISE McGUIRE

*"Lou"*

Home Room Director 2, 3  
Forum 2, 3, 4  
Secretary Forum 4  
Dramatic Club 4  
Photograph Committee 4





DOROTHEA BOND McHUGH

*"Dot"*

Commercial Club 2, 3, 4



RUSSELL LEONARD McILWAINE

*"Rusty"*

Football 3, 4  
Basketball 3  
Captain Basketball 4  
Gift Committee 4  
Record Book Staff 4



WILLIAM McKINLEY

*"Bill"*

Basketball 4



ANNA ELIZABETH McMAHON

*"Ann"*



RITA ELOISE McMAHON

Business Manager Record Book 4  
Assistant Business Manager Hilltop 4  
Dramatic Club 3, 4  
Orchestra 2  
French Club 4  
Glee Club 3  
Forum 3  
Senior Choir 4



MARGARET MARY McMULLEN

*"Peg" "Peggy"*



GRACE RICHARD McQUILLAN

Hilltop Reporter 2  
Hilltop Staff 3  
Home Room Director 1, 3, 4  
Girl Councillor 3  
Senior Choir 4  
Pin and Ring Committee 3  
Chaminade Club 3, 4  
Dramatic Club 4  
Vice President Class 4



MADELINE ELIZABETH MEDEIROS

Commercial Club 4



BEATRICE MELLO

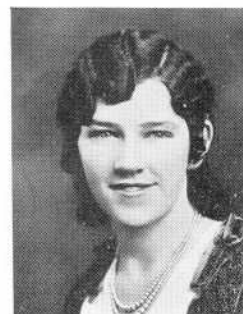
*"Bea"*

Hilltop 4



KATHLEEN MERCER

*"Kay"*



VIVIAN MILLS

*"Viv"*

Commercial Club 2, 3, 4  
Hiking Club 4



EVELYN LESLIE MINES

*"Evie"*

Dramatic Club 4  
Library Aid 4

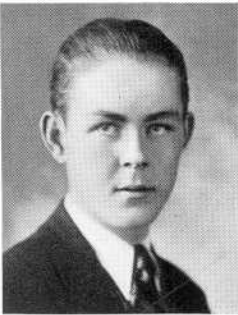


EDWARD HARDING MOFFIT

Home Room Director 3



NORMAN RENE MONGEON



FRANCIS BERNARD MORAN

*"Frank"*



JOHN LEO MORAN



MARY ELIZABETH MORAN

*"Mer" "Mae"*

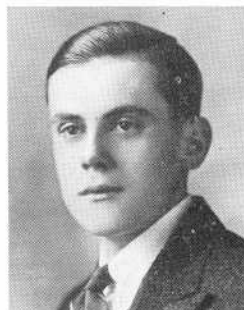
Commercial Club 2, 3, 4



AIME DONAT MORIN



ERNEST ELMER MORRIS



GEORGE EDWARD MORRIS, JR.

Home Room Director 3, 4  
Student Manager Athletics 4  
Advisory Committee 4  
Record Book Staff 4  
Dramatic Club 4



MARY CLARA MOSON

President Commercial Club 4  
Home Room Director 2, 3



JOHN JOSEPH MOYNAGH



ANNIE MROK

Secretary Class 2, 4  
Dramatic Club 4  
French Club 4  
Record Book Staff 4



ROSE JOAN MULLANY

Commercial Club 4



ALICE SHEILA MURPHY

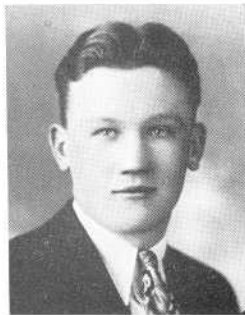
Advisory Committee 4  
Home Room Director 4  
Dramatic Club 4



JOHN JOSEPH MURPHY

*"Murf"*

Band 4  
Track 2, 3



TIMOTHY JOSEPH MURPHY



EDWARD FRANKLIN MYLES



JAMES ANTHONY NANNERY

*"Jim"*

Basketball 3  
Baseball 3, 4



MARY MARGARET NANNERY

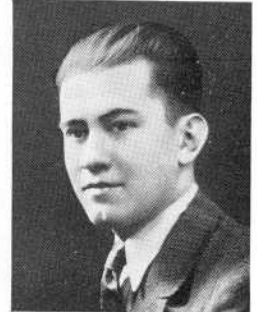
*"Mer" "Mar" "May"*

Commercial Club 2, 3, 4



DORIS VERONICA NAVIN

Dramatic Club 4  
Commercial Club 3, 4

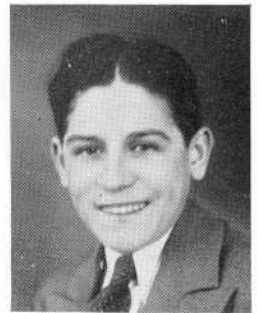


RUSSELL ARNOLD NEGUS



MURIEL FLORENCE NUTTER

*"Flo"*



ERNEST OLIVEIRA

*"Ernie" "Ernie Oliver"*



CHARLES EDWARD O'GARA

*"Charlie"*

Football 3  
Basketball 3  
Baseball 3, 4

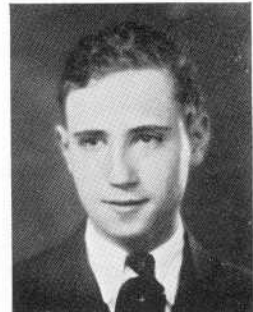


RITA MARY O'GRADY





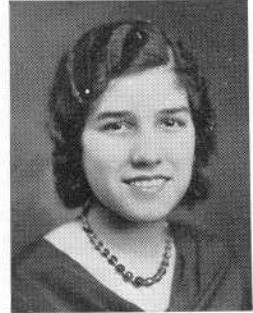
THERESA DOROTHEA O'HARA  
*"Dolly"*



MEYER OSTROVSKY



GLORIA PRISCILLA PACHECO  
*"Patsy"*



LYDIA DUARTE PACHECO  
*"Lyd"*

Orchestra 2, 3, 4



MARY PACHECO



MARY JANET PACHECO

Science Club 1



EDWIN GEORGE PARKER, JR.  
*"Babe"*  
 Home Room Director 2



WINTHROP MORRILL PARKER  
 Record Book Staff 4



RAYMOND WASHINGTON PARLIN  
*"Ray"*  
 Associate Editor Record Book 4



HAROLD PECK  
 Basketball 2  
 Track 2, 3, 4



CLAIRE MILDRED PEDDER



DOROTHY ELIZABETH PHILLIPS  
*"Dot"*  
 Commercial Club 4



ETHEL MAY PHILLIPS  
*"Eth"*



ROSE ALMA PLANTE



AGNES FRANCES PLATT

ESTHER M. POPKIN  
*"Poppie"*

Home Room Director 1  
Glee Club 3, 4  
President Glee Club 4  
Dramatic Club 4  
Senior Choir 4

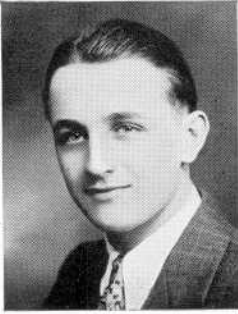


ESTELLE ESTHER PREBLUDA

Commercial Club 2, 3, 4

ELEANOR ELIZABETH PRESBREY  
*"Presy"*





ROGER PRESTON



MARGARET FRANCES PRICE



MILDRED VIRMA QUINN  
*"Milly"*



EVERETT SIMON RADOVSKY

Forum 3, 4  
Debating Team 4



NORA HELENE RAMUT  
*"Mac"*

Commercial Club 3, 4  
Chaminade Club 4



LOUISE MAE READ  
*"Lou" "Readie"*



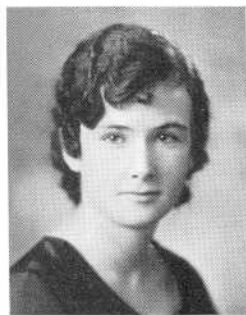
ROSE GRACE REAGAN

Advisory Committee 4



MARION KEITH REED

Dance Committee 4

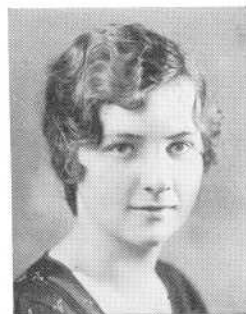


ELIZABETH PATRICIA REGAN

*"Lil"*



MARGARET RITA REGAN



MARY VERONICA REGAN

*"Sal"*

Chaminade 3, 4

Senior Choir 4



HELENE BOOTH REID

Home Room Director 2

Commercial Club 3, 4

Hilltop Staff 3, 4

Business Manager Hilltop 4

Accountant Hilltop 3

Advisory Board 4

Record Book Staff 4



MARY EDITH REID

Commercial Club 4



THELMA ELIZABETH REID

Commercial Club 4  
Accounting Staff 4



CECIL JOHN RHODES

*"Cee" "Rhodsie"*

Vice President 2  
Commercial Club 2, 3, 4  
Home Room Director 2  
Dramatic Club 4  
Advisory Committee 4



ROBERT T. RICHARDS

*"Bob"*

Track 1, 2, 3  
Home Room Director 2  
Dance Committee 3  
Football 4



GLADYS DOROTHEA RICHARDSON

*"Dce"*

Chaminade Club 3, 4  
Senior Choir 4  
Senior Dance Committee 4



DORIS EVELYN RIGBY

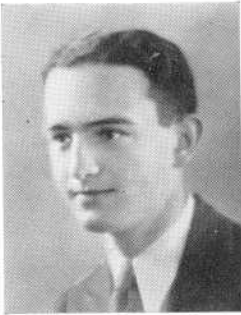
*"Dot"*



EDITH RIGBY

LOUISE LANGFORD RILEY

Home Room Director 2, 4  
Dramatic Club 4  
French Club 4



IRVING ROBINOVITZ

*"Rubber"*

Forum 2  
Chemistry Club 4



KATHREEN ROBINSON



HELEN LETITIA RODGERS

Commercial Club 3, 4  
Accounting Staff 4

HELEN LOUISE RONAN

Home Room Director 2, 3  
Dance Committee 3  
Vice President 3  
Advisory Committee 4  
Chemistry Club 4  
Dramatic Club 4





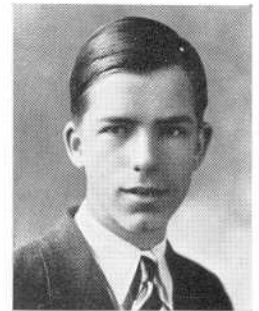
MARY EDNA ROSE  
*"Rosy"*



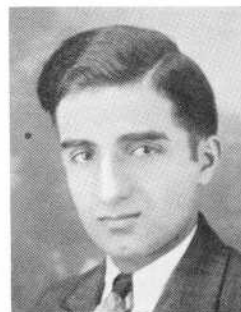
THELMA LUCY ROUNDS  
*"Thel"*  
Commercial Club 3, 4



MURIEL MAY RUSSELL  
Hilltop 3



WILLIAM ALBERT RYDING  
*"Al"*  
Home Room Director 2, 4  
Vice President French Club 4  
Dramatic Club 4



FRED THOMAS SAHIB  
*"Freddie"*  
Dramatic Club 3  
Forum 3



RUTH ALVINA SAMPSON  
*"Sammie"*





FRANCES RUTH SANDLER

*"Fran"*

Dramatic Club 3  
 French Club 4  
 Hilltop Staff 4



SELMA SANDLER

Hilltop Staff 4  
 Commercial Club 4



ROBERT LEONARD SCHWARTZ

*"Bob" "Bobbie"*

Orchestra 1, 2, 3



FLORENCE EVELYN SELLERS

Commercial Club 2, 3, 4



HAROLD SHAPIRO

*"Harry"*

MILDRED CECELIA SHORROCKS

*"Milly"*

Commercial Club 3, 4



DOROTHY MARGARET SHEA  
"Dot"

Senior Choir 4  
Chaminade 4



ELSIE JENWOOD SILVIA  
"Bunny"



LOUISA CAPPURA SILVIA  
"Louise" "Low" "Weeza"

Dance Committee 3, 4  
Dramatic Club 4  
Chemistry Club 4  
Debating Finalist 4



SYLVESTER RIVERS SIMMONS



ELI M. SIMON  
"Cy"

Home Room Director 2  
Assistant Business Manager Record Book 4  
Baseball 4  
Forum 4



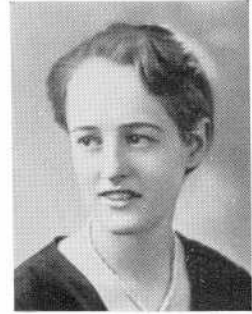
AGNES MARY SIMPSON



MARY GRINNELL SLINN

HELEN MOUNTFORT SMALL

Treasurer French Club 4  
Gift Committee 4  
Dramatic Club 4



CHURCHILL SMITH

*"Toot"*

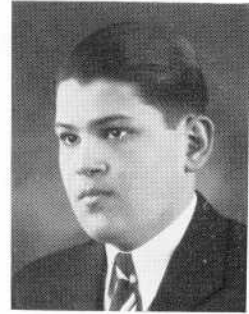
Basketball 3  
Baseball 3

JANET SMITH



MASON VESTAL SMITH

JOSEPH PETER SOUZA





STATIA FRANCES SOWA

Commercial Club 4  
Dramatic Club 4



DOROTHY ELLEN SPENCER

*"Dot"*

Dramatic Club 4



HELEN AMANDA STEININGER



MARY STEVENSON

Home Room Director 2, 3, 4  
Circulation Manager Hilltop 4



GENEVIEVE MARY ST. AMAND

*"Gen"*

Commercial Club 3, 4  
Accounting Staff 4



DOROTHY EDYTHE STROLSKY

*"Dot" "Dotty"*

Home Room Director 1  
Commercial Club 2, 3, 4



DONALD ROBERT SULLIVAN

*"Don"*

Baseball 3  
Football 3



FREDERICK JEREMIAH SULLIVAN

*"Fred"*

Gift Committee 4



JAMES MICHAEL SULLIVAN



MARK FRANCIS SULLIVAN

*"Sully"*

Commercial Club 2, 3, 4



MARY ANGELA SULLIVAN

*"Mame" "Sull"*

Basketball 4



MARY FRANCES SULLIVAN

*"Sully"*



RITA MARIE SULLIVAN



RUTH ELIZABETH SUTCLIFFE



EDNA MARGARET SWEENEY  
*"Ted" "Teddie"*



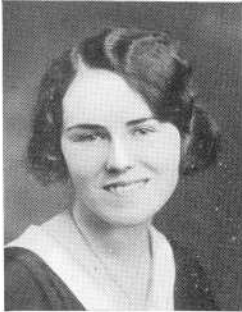
JOHN FRANCIS SWEENEY



SIGMAD W. JOHN SZCZEPKOWSKI  
Band 4



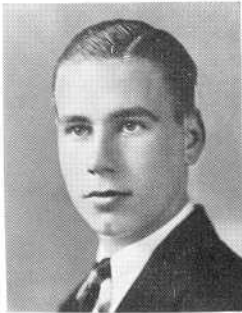
BARTHOLOMEW J. TEDESCHI



RUTH MARY TERRY



HENRY LOUIS THISTLEWAITE  
*"Harry"*



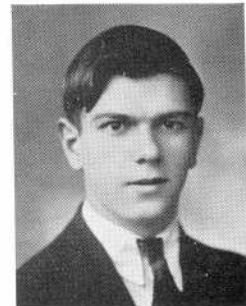
EVERETT VALENTINE THOMAS



ETHEL MARGARET THWAITE



HARRY TINKOFF  
*"Tink"*  
Commercial Club 4



JOSEPH TOKARZ  
Home Room Director 2  
Track 3  
French Club 4  
Dramatic Club 4



MERLE TONGUE

*"Si"*

Chemistry Club 4



SARAH TORGOW

Commercial Club 2, 3



JOHN WILLIAM TOULAN

*"Jack"*

French Club 4



MARIAN GRACE VAUGHAN

Commercial Club 4



RUTH CATHERINE VAUGHAN

Hilltop 4

Home Room Director 2



MARTHA RAWSTON VERITY

*"Mart"*





KENNETH PHILIP WALKER  
*"Tiny"*



THOMAS MILTON WALKER  
*"Babe" "Tom"*

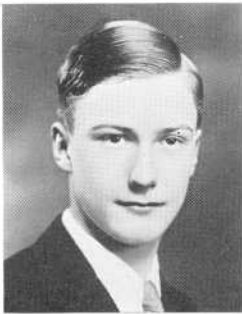


JOHN FRANCIS WALSH, JR.  
*"Jeff"*

Home Room Director 2  
Hilltop Staff 3, 4  
Vice President Dramatic Club 4  
Chairman Pin and Ring Committee 4  
Chairman Photograph Committee 4



EDWARD MYLES WARD  
Forum 2, 3, 4  
Sergeant-at-Arms Forum 3  
Dramatic Club 3, 4  
Executive Committee Chemistry Club 4



DONALD WALLACE WARDEN  
Advertising Manager Dramatic Club 4  
Chemistry Club 4



HENRY WARREN  
*"Hen"*



ALBERTA WATTERS  
*"Al" "Bert"*



MERRILL CHASE WATERS  
*"Happy"*  
 Baseball 3, 4



HELEN ELIZABETH WATTS



OSCAR WIEDEMAN



RUTH LAWTON WILMOT  
*"Rufus"*  
 Home Room Director 4  
 Girl Councillor S. A. A. 4



MARY ISABEL WISHART  
*"Izzy"*



### ESTELLE BEATRICE YAMINS

Chaminade Club 4  
Chaminade Librarian 4  
Senior Choir 4



### HARRY YOKEN



### ANNA JANE ZAJAC

*"Cleo"*

### NORMAN MELVIN ZALKIND

*"Red" "Norm"*

Forum 1, 2, 3, 4  
Vice President Forum 3  
President Forum 4  
Debating Team 2, 3, 4  
Captain Debating Team 4  
Chairman Gift Committee 4  
Pin and Ring Committee 3  
Record Book Staff 4  
Home Room Director 1, 2, 4  
Senior Social Committee 4  
Dramatic Club 4, Chemistry 4



### DOLORES ZANGWILL

*"Dorry"*

Commercial Club 4  
Dramatic Club 4

### EVA CHARLOTTE ZELDES

*"Eve"*

Commercial Club 3, 4  
Home Room Director 2  
Dramatic Club 3, 4





MARIE YVONNE BELISLE

MARGARET MARY BRADY

MARY CAMELA CAROSELLI

JOHN JOSEPH DESMOND

ARMAND DUPERE

WINSTON REED GILBERT

ANNE FRANCES HARRINGTON

THADDEUS JOHN KAMINSKI

JOHN FRANCIS KANE

BRONISLAW J. KOZACK

ALBERT LECHINSKY

FRANCIS MACHADO

RUTH MUNROE MACOMBER

STANLEY JOSEPH MAKARA

JOHN ANTHONY MARTIN

JEANNE FRANCES McDONALD

GUSTAVE ALEXANDER NIEDZALEK

GEORGE CHARLES OUMET

RUDOLPH ROBINSON

DAVID SANDLER

JOHN LEO J. SHEA

HAROLD JOSEPH SMITH

ROBERT FRANCIS SMITH

DANIEL V. SULLIVAN

EDNA BARBARA SULLIVAN

JOHN THOMAS TUNNEY, JR.

JOHN JOSEPH VIVEIROS

KENNETH RICHMOND WHORMBY

CHARLES FRANCIS WITTER

---

# AUTOGRAPHS

A.M.A.



Louise Silvia  
 Louise Silvia  
 Yvette Dufresne  
 Anna Chernock  
 Grace McQuillan  
 Anna Chernock  
 Ruth Wilmot  
 Catherine Donnelly  
 Margaret A. Halpin  
 Mary E. Hoar  
 Janet Smith  
 Yvette Dufresne  
 Anna Chernock  
 Inez Flores  
 Grace Kelly  
 Marion Lane  
 Anna Zajac  
 Marion Lane  
 Inez Flores  
 Helen Steininger  
 Ethel Goldstein

**Most Popular**  
**Most Agreeable**  
**Most Interesting**  
**Most Promising**  
**Most Talkative**  
**Most High-minded**  
**Most Versatile**  
**Most Mischevious**  
**Most Original**  
**Most Studios**  
**Most Dignified**  
**Class Wittiest**  
**Most Brilliant**  
**Most Athletic**  
**Best Looking**  
**Best Known**  
**Best Dancer**  
**Class Flirt**  
**Class Sport**  
**Class Giant**  
**Class Midget**

John Brown  
 John Brown  
 Norman Zalkind  
 Francis Hanify  
 Russell McIlwaine  
 James Carney  
 James Carney  
 Ernest Oliveira  
 John F. Walsh  
 Francis Hanify  
 Francis Hanify  
 Norman Zalkind  
 Norman Zalkind  
 William Hacking  
 Winthrop Parker  
 Russell McIlwaine  
 Vincent Ahaesy  
 Joseph Cahill  
 John Brown  
 John Moran  
 Francis Harrington



## Students' Activities Association

The Students' Activities Association has planned and toiled unceasingly during the past year. Among the many things they have enjoyably planned are the afternoon socials. We feel assured that the students appreciate these socials because they bring about good fellowship and the best spirit.

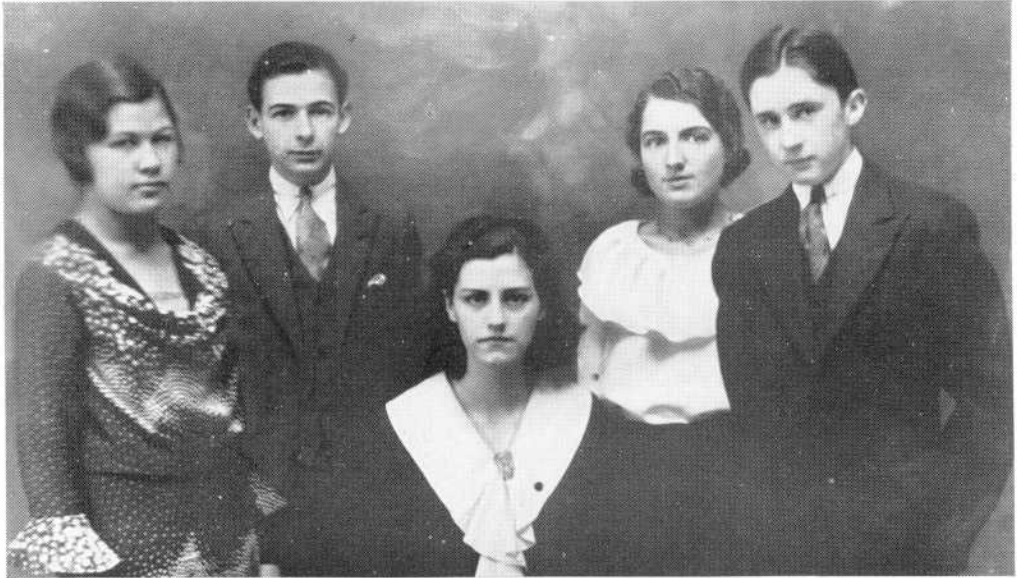
Our organization has also revised the Constitution.

The President and Senior Girl Councillor, also a Faculty Advisor attended the annual convention of the Associated Body of Student Councils held in Everett, Mass.

The annual S. A. A. drive was a success.

The officers for this year were:

KATHLEEN ASHWORTH, *President*  
RUTH POSNIAK, *Vice-President*  
ELLEN COPPINGER, *Secretary*  
WILLIAM McAVOY, *Senior Boy Councillor*  
RUTH WILMOT, *Senior Girl Councillor*  
HAROLD SANDLER, *Junior Boy Councillor*  
MARJORIE BENNETT, *Junior Girl Councillor*  
JAMES MCGUIRE, *Sophomore Boy Councillor*  
CLAIRE MURPHY, *Sophomore Girl Councillor*



## Durfee Dramatic Club

*President, YVETTE DUFRESNE*

*Vice-President, JOHN F. WALSH*

*Secretary, FLORENCE SMITH*

*Recorder, ANNA CHERNOCK*

*Call Boy, MILTON KOSSOI*

*Coach, MISS BARBARA WELLINGTON*

At the weekly meetings of this club there have been many and varied programs, including both business and entertainment.

This year's accomplishments of the club are locked up in the following composition:

### DRAMA ON A NIGHTMARE

Oh-oh—ummm. 12 o'clock midnight, and I'm just positively tired sitting here listening to this crazy discussion.

B-zzzzzzz-zz.

12:30 A. M. Nevertheless, I've got to go to sleep right away———  
What IS this? I see two children, no, it's Rita Flynn and Lila Astin quarreling over a bank and laughing over the word "Nevertheless", and finally making Milton Kossoi, the big bad burglar, walk the straight and narrow path.

Who's that kid peeking out between the curtains? Oh, that's Bob French the bad brother of Vera Bowland who is being made love to by Joe Carvalho. Bob was supposed to be very naked and oh, oh!

What a hullabaloo—Y-Y-Y! It's Harold Sapadin making Dot Spencer fall for Tom Foley in spite of Papa Brotkin and Mama Alberta. And there is Jean, a tamed Nell helping her brother out of the fake radio thig-a-ma-jig.





And who is this queer creature in black and white pyjamas? Oh yes, it's Statia Sowa as Pierrot and there's Bob French in Sir Walter Raleigh's cloak offering it to the proud and haughty Muriel Barlow. What's Doris Navin showing Lila Astin to hang over the fireplace? Why, it's Kiss-Me-Quicks and that's what Emma Larrivee gets AND, Miss Wellington gets a check for her play, "Is Romance Dead?"

An open fireplace with two portraits hanging side by side—they're moving: my this IS novel! Then there is the dashing tune of "Betty Co-Ed" followed by the tap-tap of Ethel Goldstein. Goodness, that commanding voice calling, "Stephen Ber-rew-ster". Lo and behold, here is Pan straight from the woods, tempting a little working girl and now the strains of "Hello, Baby", and I recognize Thelma and Sonia, no, it's Roger and Malcolm. What a splendid type of girl Roger was! Thru dim eyes, Anna Chernock appears with her violin. Heavens, it's that band of cowboys and cowgirls in "Somewhere in Old Wyoming". Oh, how sorry I feel for poor Wild Nell. How lovely was that Irish grandmother and daughter. From out of nowhere suddenly appear 6 French dolls and then the tunes of the "Gay Nineties" with Rita Flynn and Duncan Hanley and what a spill they took off their "Bicycle Built for Two". Gordon Barber and Muriel Barlow are quarreling over "Masks".

I'm at the Casino. Gosh, what a crowd and they're all having a supremelocloconflopuous time, roller-skating. (Some of them "fall down and go boom" including Gordon Barber, Louise Martin, Doris Navin, Mae McConnell and then some).

Why, there's little Rosa coming home from school and Stella sewing away. Then the birthday cake! And poor Rosa has to go to work! "Where But In America" would this really happen? A dinner table with husband and wife waiting for the maid who's telephoning to her boy-friend, (incidentally, the maid is Jean Aldrich) and so the dinner is only a couple of hours late.

What is this long row of Baby Austins? They're going over the New Bedford road on a Treasure Hunt. I'm in an Austin; no, I'm on a Horse's Neck. Gosh, they've thrown a hot dog at me as a life preserver; what's it all about? ? ?

Hey, look! Where have I seen those jailbirds before? Why, I know, there's Joe Mansfield held spellbound by Alice Murphy who comes to see the murderer, Gordon Barber. James Carney tried to save the brute's soul in vain. Then they all broke up into a wild necktie party at the famous Pawtucket jail.

Again I see that long run of Baby Austins and gosh, we're headed for Nonquit, Miss Wellington's farm. We're all off on a good time. Now it's 7:30 and we're headed for New Bedford High School to see the three one-act plays and then, whisk home again. What a party!

"Oh, to write a symphony! To be subsidized! What is this that keeps me from it? Merely the Cady family. Can't they see I want to write my symphony? No? Then I'll kill them! There, it's done. Now I can write. What? A life sentence to write popular music in the Cady Art Factory? I cannot do this, Cynthia; I'm free to die. Will it hurt? Don't leave me, Cynthia, I love you, I love you ....."

Good gosh, wow, what a dream! Where am I? Who is that on the stage? Oh, only that woman demonstrating those cotton silk dresses for graduation. Gosh, can you blame me for having such a terrible dream and me sitting all the time in the good old, or rather new, Technical auditorium?



## The Durfee Hilltop

*Editor-in-Chief*, MARGARET A. HALPIN

*Associate Editors*

RITA E. HALPIN

MARY ELIZABETH HOAR

*News Editor*, ALMA KEEFE

*Asst's*, PAUL GRIFFIN, RITA E. McMAHON

*Ass't*, RUTH DODGE

*Accountant*, GRACE KERNES

*Sports Editor*, JOHN F. WALSH

*Artist*, ELIZABETH BARNES

*Ass't*, PAUL GRIFFIN

*Photographer*, GEORGE BOZIAN

*Literary Editor*, RUTH VAUGHAN

*Joke and Human Interest Editor*,

*Exchange Editor*, DORALITA McDUGALL

DAVID FRIAR

*Circulation Mgr.*, MARY STEVENSON

*Ass't*, JEANNETTE DODGE

*Asst's*, SELMA SANDLER, FRANCES

*Faculty Adviser*,

SANDLER, BEATRICE MELLO

MR. JOSEPH A. WALLACE

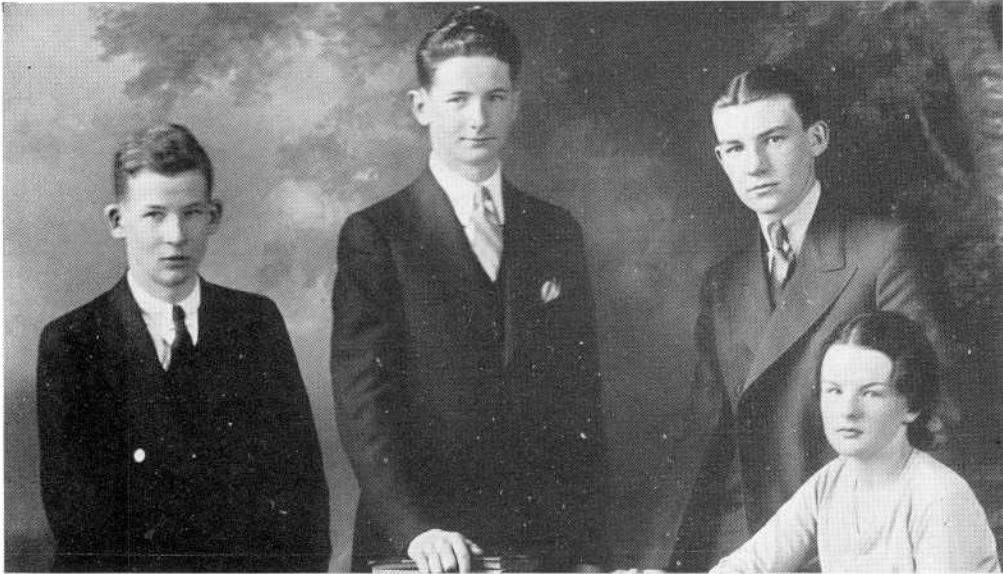
*Business Mgr.*, HELENE B. REID

*Typist*, CECILE LAMOUREUX

This year The Durfee Hilltop has been the usual financial as well as social success. Much commendation is due Mr. Joseph A. Wallace for the work which he accomplished as faculty adviser. Margaret A. Halpin, the Editor-in-chief, has been, without doubt, one of the best Editors that the Hilltop has had in its years of publication. It was through her efforts that the Hilltop has this year made such headway in the popular opinion of the student body.

Special editions printed this year were the Hallowe'en and Christmas issues, not to mention the humorous number called "The Weakly Squeak".

The circulation this year far exceeded that of other years enabling the paper to enjoy a good financial background.



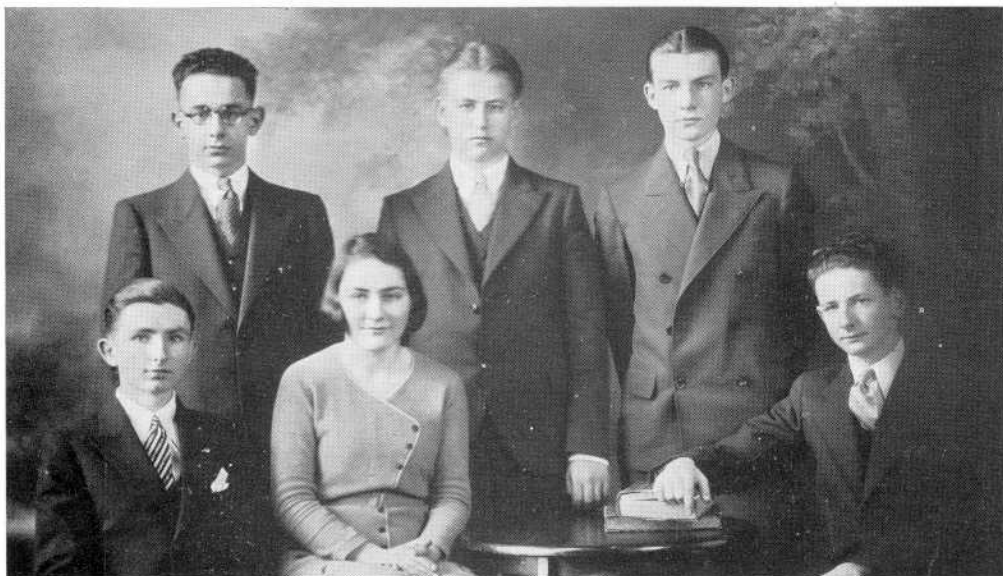
## The Durfee Forum

NORMAN M. ZALKIND, *President*  
ROBERT PICKUP, *Vice-President*  
JOSEPH MANSFIELD, *Treasurer*  
HAROLD SAPADIN, *Sergeant-At-Arms*

Under the direction of Miss Virginia Mixer, and the capable President, Norman M. Zalkind, the Forum enjoyed a very successful season.

Meetings were held every Thursday evening at which interesting debates were the main feature. The Forum also entertained several speakers. The Mock Trial presented by the members was one of the funniest presentations of the year.

The Forum also directed the annual Senior Debating Tournament, the winners of which were Yvette Dufresne and Louisa C. Silvia.



## The Debating Team

The Durfee Debating Team, coached by Miss Virginia Mixer, and captained by Norman M. Zalkind, concluded its sixth consecutive year as an undefeated platform squad.

With but one varsity member, the captain, left over from last year, and one junior member, the squad added to its personnel James W. Carney, Jr., Stanley Olmick, Martha Bloom and Everett Radovsky.

The team debated four schools through the year, the longest season for the past five years. Brockton, Providence Tech, and Rogers fell before the powerful oratory of the Durfee squad. The grand finale of the season was the defeat of the New Bedford High School team.

The squad was awarded the Tri-School Banner for its victory over the two Rhode Island schools.



## The Commercial Club

MARY C. MOSON, *President*  
PHYLLIS MULVENY, *Vice-President*  
MARY M. BUCKLEY, *Secretary*  
ELEANOR M. CLARK, *Treasurer*  
WILLIAM J. CHISHOLM, *Faculty Advisor*

One of the largest clubs in the school has recently completed its seventh year. This is the Commercial Club.

Under the direction of the faculty adviser, Mr. William J. Chisholm, and Mary C. Moson, President, the club has this year been one of the most popular. Soon after the opening of school, it held its first social event, "poverty party", at which a bean supper was served and dancing enjoyed by all the attendants.

The club had several interesting speakers at different meetings, among them being Edward E. Mellen of the Telephone Company.







## Chaminade Glee Club

---

*President*,—ESTHER POPKIN

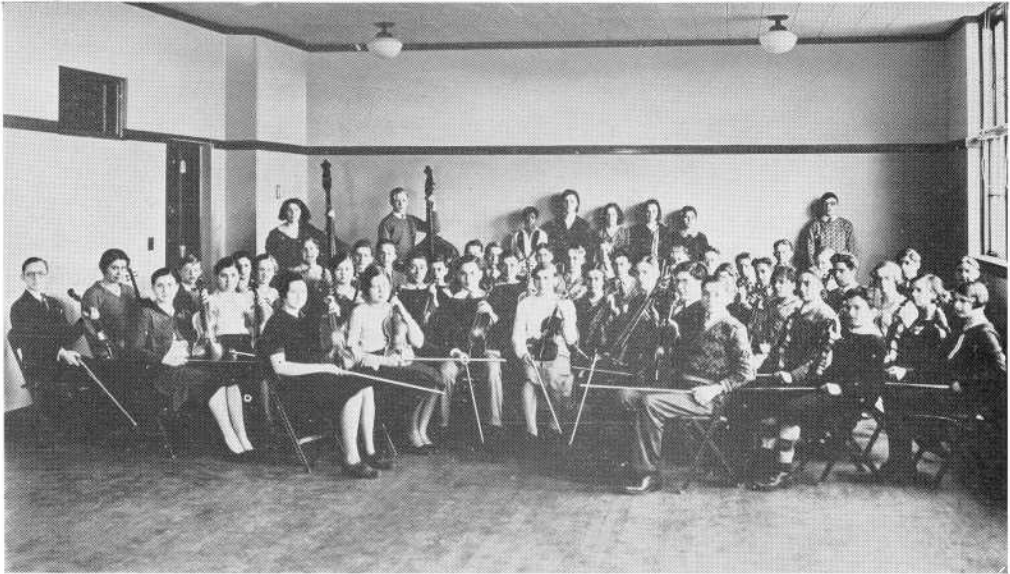
*Vice President*,—SONIA LITWAK

*Secretary-Treasurer*,—ESTELLE YAMINS

This year the Chaminade Club, under the direction of Mr. Robert M. Howard, has been very active. Soon after school began in September, this organization sponsored a dance in the gymnasium. It was the first of its kind run by the club, but the profit received was very encouraging.

At Christmas time, carols were sung in the halls of both buildings, by robed members. On May 8th, a joint concert with the orchestra was held in Tech Hall. Attendance at that performance was very gratifying.

The club met every Tuesday and Thursday, the second period. Their annual banquet was held June 3rd, at the Eagle Restaurant.



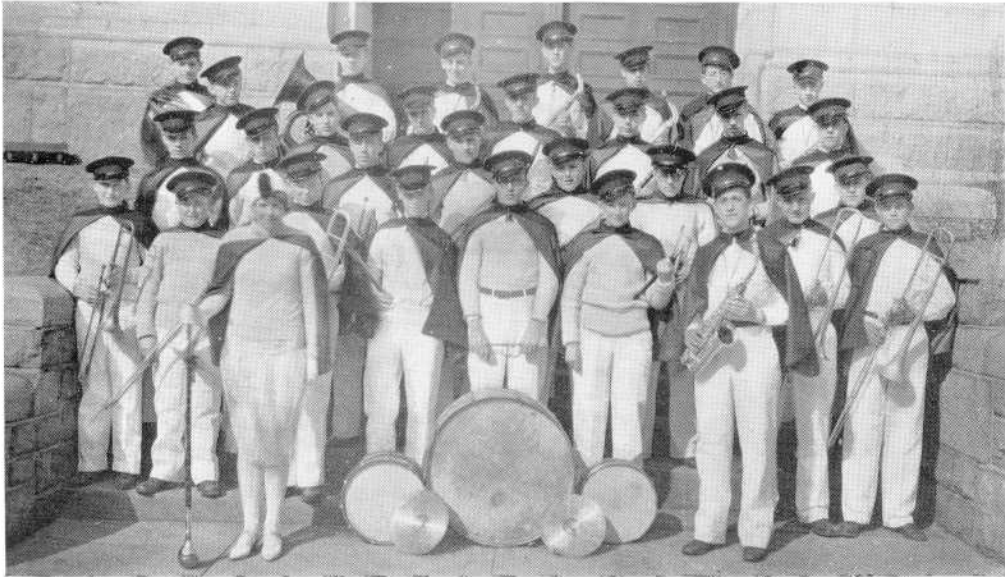
## The Durfee Orchestral Club

The orchestra, under the direction of Mr. Robert M. Howard, is one of the organizations at Durfee that we value very highly. The fifty-four members, many of them belonging to the graduating class, are to be praised for their work. Two symphonies,—Beethoven's Fifth Symphony and Haydn's Second Symphony—were featured by the orchestra, an unusual feat for a High School organization. Twenty-four of the members comprise what is known as the Durfee Ensemble.

With Louise Hodge as concert master and Anna Chernock as orchestra manager, our musical organization this year has been very active, having played for the Rotary Club, Kiwanis Club, Evening High School graduation, and at musical lectures given by Mr. Howard at the Women's Club.

Our Class Day and Graduation programs included selections by the orchestra.





## The Durfee Band

The band, organized this year by Mr. Howard, is greatly appreciated by the students of Durfee. It consists of forty-one members, with Roger DiNucci as assistant leader. The band made its first appearance at a football rally held the night before the Thanksgiving game. With uniforms of red and black and with Mae McConnell as Drum Major, the band added color and enlivenment to the football game between New Bedford and Durfee, and also to the basketball charity game last winter. It also played for the Kiwanis Irish Night, Rotary Club luncheon, League Meeting of the S. E. M. L. S. P., and at assemblies of the school.

---

## French Club

---

*President*,—CELINE LARRIVEE

*Vice President*,—W. ALBERT RYDING

*Secretary*,—FLORENCE LEVESQUE

*Treasurer*,—HELEN SMALL

This club was organized by Mr. Maronpot, head of the Modern Language Department. There are sixty-five members enrolled. Among the things accomplished by the organization this year, was the presentation of a French play at an assembly. The club has several committees—they are:

Social Committee—Arthur Cartier, Joseph Tokarz, Hannah Shahdan and Estelle Oulette.

Publicity Committee—William Howard, Paule Plamondon, Ruth Bilsky and Louise Riley.

## The Durfee Chemistry Club

---

*President*,—WILLARD GILBERT

*Vice President*,—ALICE MURPHY

*Secretary*,—RUTH WILMOT

*Treasurer*,—RUTH RUDD

*Faculty Advisor*,—MR. JOSEPH O. CARROLL

The Durfee Chemistry Club was reorganized this year. Programs consisting of experiments and talks are given at the club meetings on subjects which are not taken up in the school curriculum.

The Club has entertained leading figures in the scientific and chemical world. Although it was organized during the latter part of the year, it has proven a most successful enterprise.



## Library Aids

*President*,—JAMES W. CARNEY

*Vice President*,—HENRY MICHAELS

*Secretary*,—EVELYN MINES

*Treasurer*,—ELIZABETH BARNES

With the opening of the Library in the Technical building this year, it was necessary for Miss Marion E. Kernan, librarian, to have some assistants. By the aid of the faculty, Miss Kernan was enabled to get a very diligent corps of workers. Their duties were to keep the books in order according to the Dewey Decimal System and to help Miss Kernan in distributing library passes to the users of the library.

## The Durfee Electrical Club

---

The Durfee Electrical Club was started soon after the Christmas vacation was over. At the first meeting, sixteen members were enrolled. Officers were elected as follows:

SAMUEL HART, *President*

JOHN BURRELL, *Vice President*

JOSEPH SOUZA, *Secretary*

MICHAEL HERLIHY, *Treasurer*

The directors of the club are members of the Faculty, Mr. French and Mr. Shea.

Meetings were to be held every other Wednesday and a program was to be given at every meeting. Some of the programs were: a complete description of the operation of the X-Ray, Cathode Ray and Geissler tubes, a lecture on the amplifying system, and a motion picture and lecture on the electric railway system.

The club also visited the Telephone Exchange on Bank Street, where the work of the operators was explained by guides. At present there are twenty members enrolled.



---

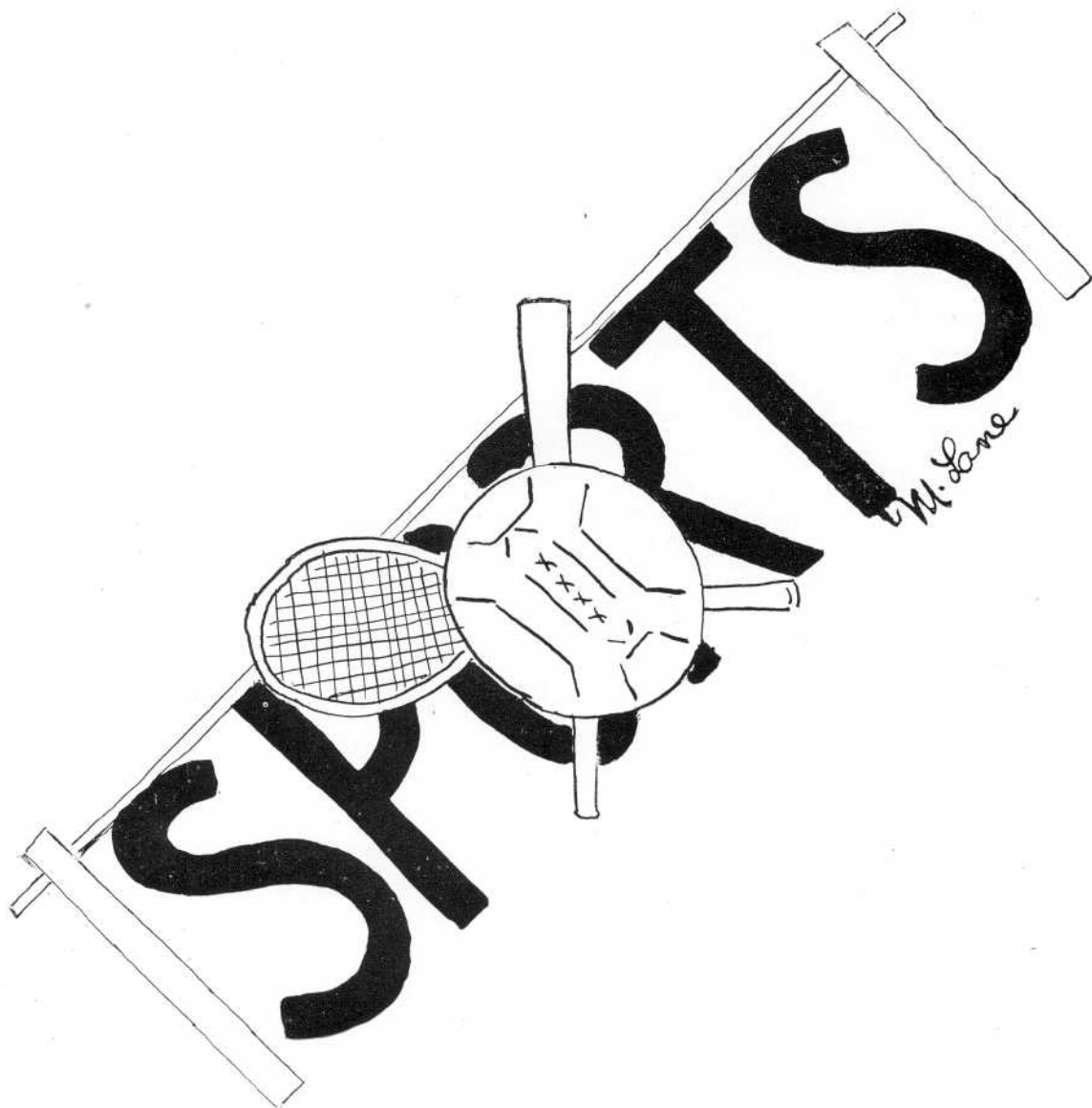
## Home Room Directors

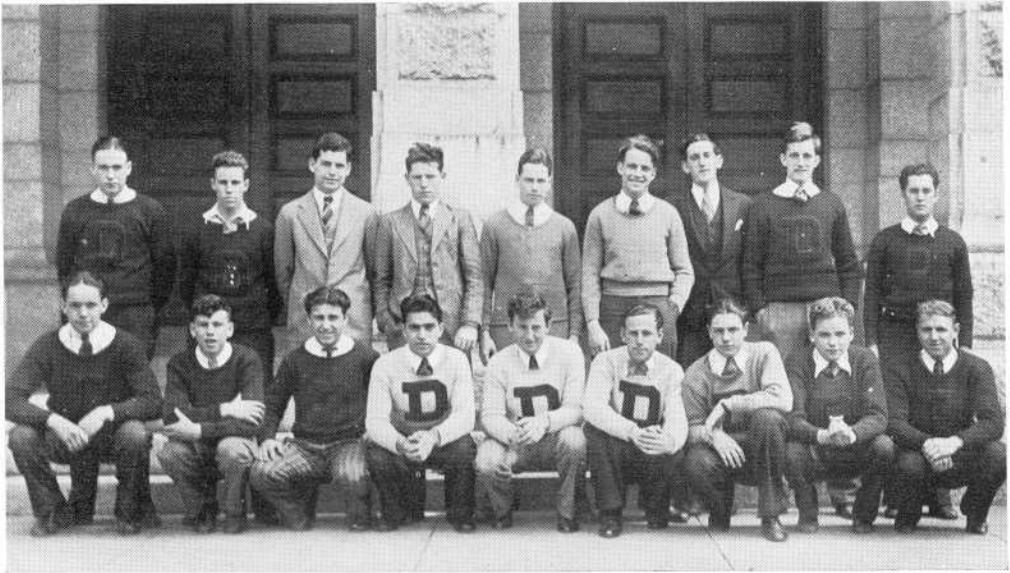
---

Each year two Home Room Directors are chosen for each home room. All candidates must have all marks for the first term and at least one mark of seventy-nine or over. The Seniors chosen to fulfill the duties are as follows:

JAMES CARNEY  
WILLARD DIXON  
FRANCIS HARRINGTON  
WILLIAM HUSSEY  
MILTON LINCOLN  
WILLIAM McAVOY  
GEORGE MORRIS  
W. ALBERT RYDING  
JOSEPH SOUZA  
NORMAN ZALKIND

MARY BEZUBKA  
YVETTE DUFRESNE  
DOROTHY FIELDEN  
RITA KENNEY  
LILLIAN LeCLAIR  
GRACE McQUILLAN  
ALICE MURPHY  
LOUISE RILEY  
MARY STEVENSON  
RUTH WILMOT





The Football Team



---

---

## Football

The Durfee football aggregation of 1930 did not enjoy the fruits of success as did the baseball and basketball teams. The team, under the direction of Coach "Steve" Nawrocki and Captain Bill Hacking, won two, tied three, and lost four games.

On September 27th the team opened the season by playing a scoreless tie with the West Warwick aggregation. On October 4th the Attleboro team visited Alumni Field and went away on the short end of a 6 to 0 score. The team which was beginning to shape up as a winning aggregation received a severe setback when it traveled to Fairhaven and was defeated by the score of 26 to 0.

A fighting Red and Black eleven met and defeated the Falmouth High team 7 to 6, the following Saturday. On October 25th the team played a scoreless tie with the representatives of the New Bedford Vocational school on a mud-soaked field. In its next encounter the team was defeated 25 to 6 by the North Attleboro team. The Taunton eleven held Durfee to a 6 to 6 tie on November 8th. 27 to 0 was the score of the Durfee-Mansfield tussle, with Mansfield holding the upper hand.

On Thanksgiving Day a strong New Bedford High team came, saw and conquered by the score of 34 to 6.

The following Seniors received their letters:

Captain "Bill" Hacking—Durfee's stellar leader and all-County halfback.

"Rusty" McIlwaine—The talkative but alert quarterback.

"Manny" Ferreira—Our short but scrappy end.

"Jack" Brown—An ail-around line man.

"Eddie" Costar—A guard of no mean ability.

"Frank" Barriault—A good center, stopped only by a lame knee.

"Joe" Keefe—A flashy halfback.

"Les" Hetherington and "Red" Ahaesy, substitute linemen.



## Boys' Tennis Team

---

The Boys' Tennis Team, under the direction of Coach Joseph Carroll and Capt. "Dave" Feinberg, opened the season in an auspicious manner. Defeating Attleboro 3 to 1 in its first game and Vocational 3 to 0 in its second contest, the team began its season with a record of victory.

On May 18, the team met its first defeat on the court of the Fairhaven netmen, losing 4 to 0.

At the time of going to press with this book, the racket wielders had four games left on the schedule. Seniors on the team were: Capt. "Dave" Feinberg and John Clorite.

May 5	Durfee 3, Attleboro 1
May 12	Durfee 3 Vocational 0
May 15	Durfee—New Bedford, Rain.
May 18	Durfee 0, Fairhaven 4

Other games that remained to be played at the time of going to press were:

May 29, New Bedford; June 2, Vocational; June 5, Fairhaven; June 8, Attleboro.

---

## Track

---

At the first meeting of the Track candidates Coach Duffy found the outlook for the season very bright. He had on hand a wealth of veteran, as well as a promising group of new material. The track season was officially opened with an inter-class meet on Monday, May 18.

The Seniors won the meet easily, while the Juniors finished second and the combined Sophomore and Freshman classes third. On May 26th, the team traveled to New Bedford to meet the strong Vocational team. The Vokes won by the score of 68 1/6 to 26 5/6, taking all first places but one.

The team had, at the time of going to press, two more meets, one with New Bedford High on June 3 and the Bristol County meet.

The following Seniors represented Durfee on the cinder path:-

John Murphy—440 yard run, broad jump and the relay.

Earl Ainsworth—100 yard dash, the 220 yard run and the relay.

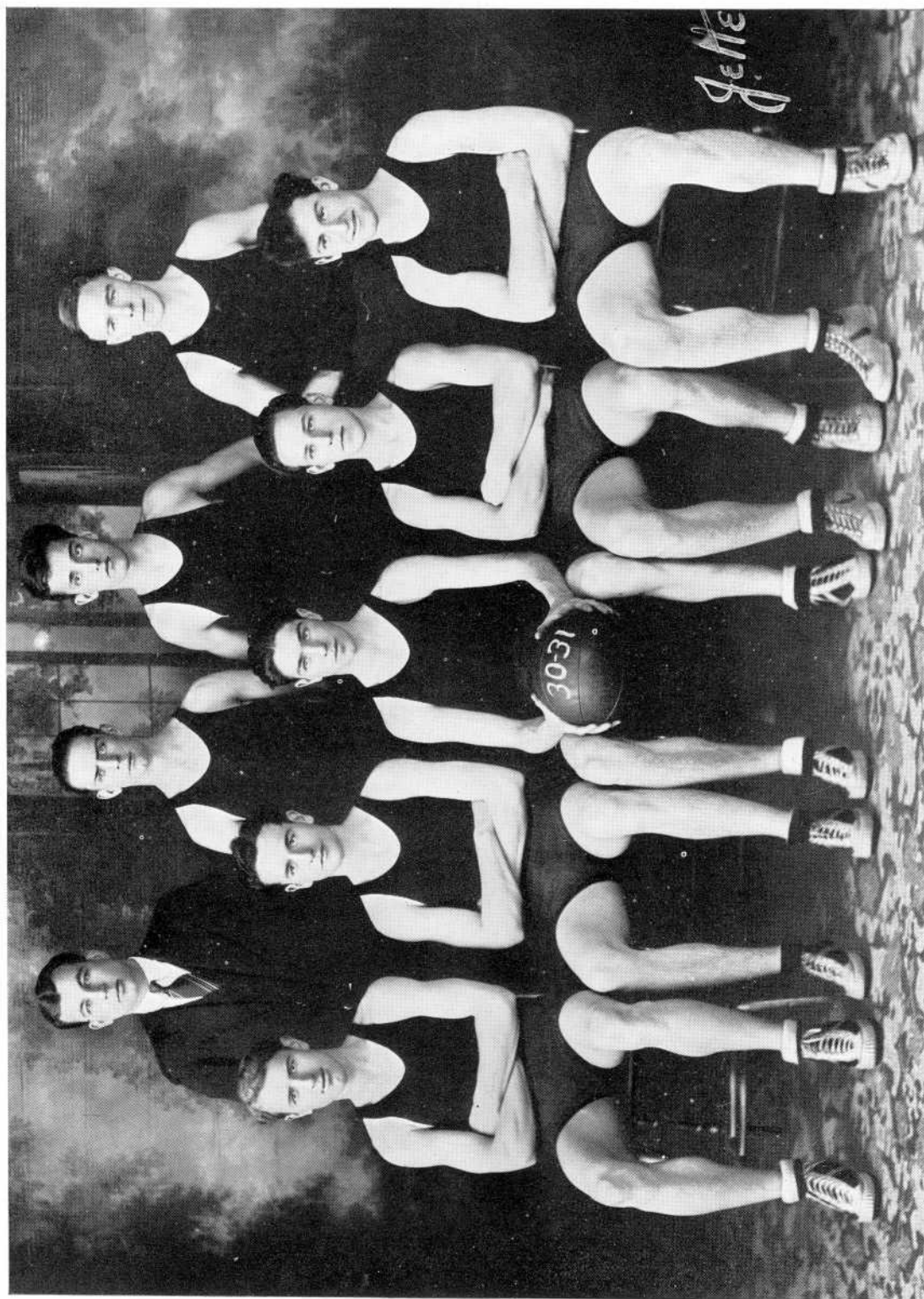
Bill McAvoy—the high jump.

Joe Tokarz—the high jump.

Oscar Weideman—Discus throw and javelin throw.

Manny Ferreira—javelin throw.

Siggy Szczepkowski—javelin throw.



## Basketball

The basketball, team under the tutelage of Coach Nawrocki, enjoyed a successful season and won eleven games and lost four—finishing second in the Bristol County League.

The team looked snappy in their scarlet uniforms and treated the fans to some very good playing.

The class of 1931 was proud of the team as four of the first five were Seniors, and of the eight to receive letters, six were Seniors.

Summing everything up, the team was a good one and a credit to Durfee.

Captain "Rusty" McIlwaine, All-Bristol County center, tied for individual scoring honors, amassing a total of 169 points for the season, playing his second season as varsity center, led the team through victory and defeat like a real captain should.

Jack McHugh played his second season with Durfee under handicap. Jack very seldom flashed; he was a steady player and one you could always rely on. Without Jack the team would never have accomplished what it did.

"Bill" Hacking, one of the best all-around athletes ever turned out at Durfee, was one of the best guards Durfee has had in recent years, always fighting to the end and was no end of bother to the opposition.

John Brown will always be remembered for his perpetual grin and the way he tied up the charity game with his shot in the last second of play at the Casino. He was the other half of a great pair of guards.

William McKinley, who, although he didn't play every game, whenever his chance did come, played the game for all he was worth.

David Garriek took sick early in the season, but before he became ill he showed us that he could play basketball and it was a blow to lose him.

The summary:

Durfee	45	Alumni	40
Durfee	27	West Warwick	25
Durfee	36	Providence Tech	21
Durfee	24	North Attleboro	26
Durfee	39	Durfee Textile	36
Durfee	34	New Bedford	35
Durfee	17	Attleboro	29
Durfee	24	N. B. Vocational	21
Durfee	22	North Attleboro	13
Durfee	22	New Bedford	40
Durfee	46	N. B. Vocational	17
Durfee	30	Attleboro	11
Durfee	43	Fairhaven	22
Durfee	32	Holy Family	30
Durfee	51	Fiarhaven	34
Total	492	Total	400



The Baseball Team



---

## Baseball

---

Led by Captain "Joe" Keefe and coached by Mr. Leslie Orcutt, the baseball team made good headway, winning six out of the first nine games played. The results were as follows:

Durfee 8, East Providence 3.

Durfee 4, Taunton 5.

Durfee 12, Fairhaven 9.

Durfee 11, Boston Latin 10.

Durfee 2, Vocational 3.

Durfee 8, Taunton 4.

Durfee 2, Brockton 4.

Durfee 7, Vocational 5.

Durfee 6, Providence Tech 5.

Other games that remained to be played at the time of printing, were encounters with Fairhaven, Brockton and New Bedford.



Dear Humor Editor:-

I think your jokes are as clear as mud.

Answer:-

Well, that covers the ground anyway.

\* \* \*

Miss Galvin: "The High School student costs the city \$54,502."

Joe Cahill: "Can any one stay out of school and collect?"

\* \* \*

To Our Teachers.

Though you pass or though you flunk us,  
 Though you sink or sank or sunk us,  
 Though you sometimes catch us skipping  
 Out the back door, softly tripping,  
 Though you think us thick or funny,  
 Though you think us quite some dummy,  
 Though you will forever doubt us,  
 What shall Durfee be without us?

\* \* \*

Cecil Rhodes: "I'd face death for you."

Marjorie Cook: "Why did you run from that dog?"

Cecil: "It wasn't dead."





Eli M. Simon (to his father): "Dad, I got a letter today for something I didn't do."

Father: "Something you didn't do? How's that?"

Eli: "Well, I didn't do my home work."

\* \* \*

Farm Boy: "Come on, I'll show you how to milk a cow."

Tom Crotty: "Hadn't I better get a calf and learn gradually?"

\* \* \*

Words of teachers all remind us  
We can use them big as they  
And after speaking leave behind us  
People wondering what we say.

\* \* \*

James Carney: "In this great and glorious country of ours there is no North, no South, no East, no West ....."

Norman Zalkind: "No wonder we don't know where we're at."

\* \* \*

(Two fathers of college seniors were discussing their sons.)

"Why, my son is so lazy he wants to open an ice factory in Alaska."

"Why, man, my son would like to get a job with your son as a book-keeper."

\* \* \*

Miss Davis: "An anonymous person is one who does not wish to be known." ..... (upon hearing a tittering in the room)

"Who is that laughing in the class?"

Miss Peck: "An anonymous person, teacher."

\* \* \*

Hard-Boiled Grocer: No sir,—no checks,—I wouldn't cash a check for my own brother."

Disappointed Customer: "Well, of course—you know your own family better than I do."

\* \* \*

Sense: "I can tell the score of the game before it starts."

Nonsense: "What will it be?"

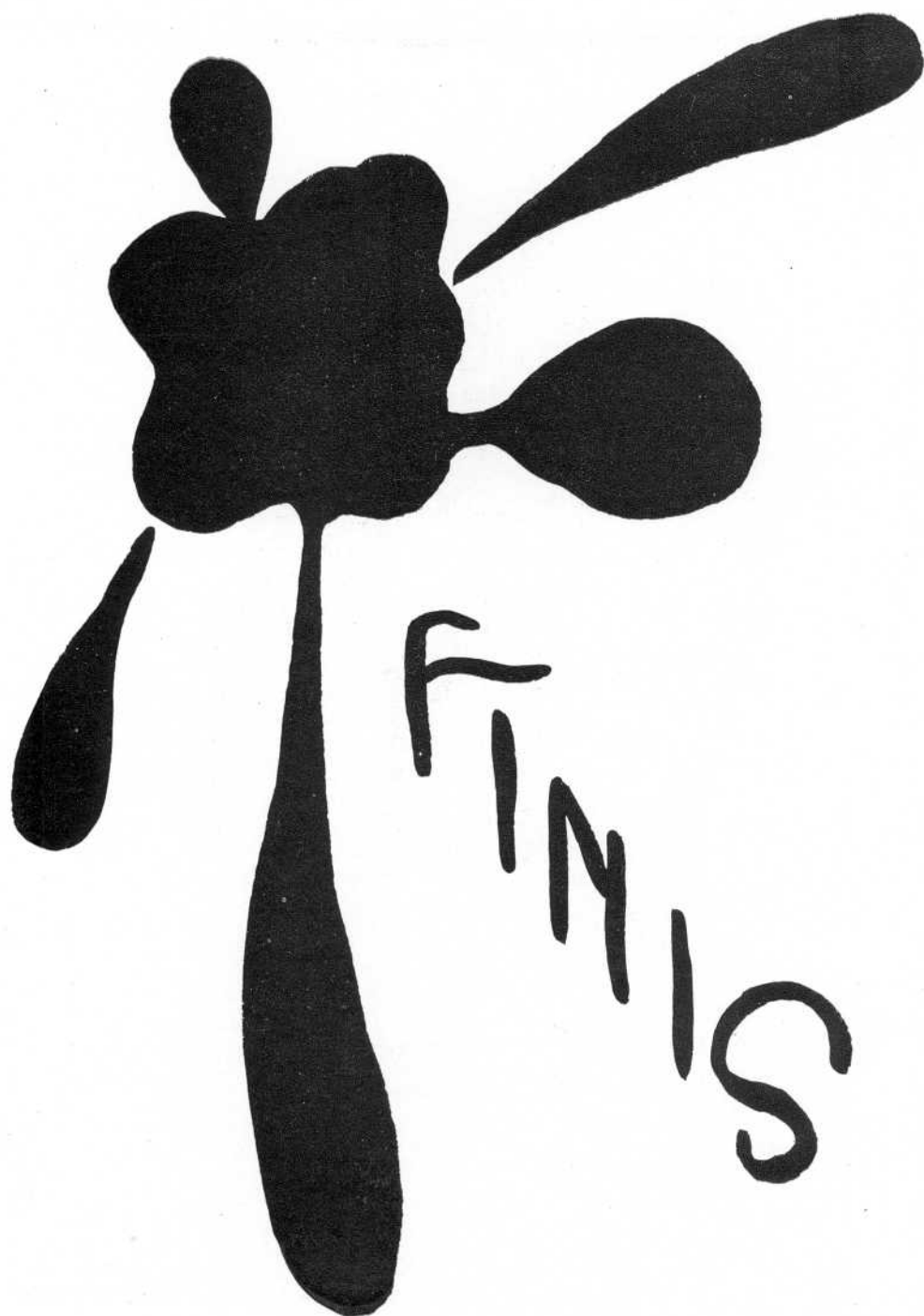
Sense: "Nothing to nothing, before is starts."

\* \* \*

Boy: "I want a collar for my father."

Clerk: "One like mine?"

Boy: "No, a clean one."



ADS

Best Wishes from the Four

MUTUAL SAVINGS BANKS

IN FALL RIVER

---

The only Savings Banks in Massachusetts are the Mutual Savings, and the only Savings Banks in Fall River are:

THE FALL RIVER SAVINGS BANK

ESTABLISHED 1828

THE CITIZENS SAVINGS BANK

ESTABLISHED 1851

THE FALL RIVER FIVE CENTS SAVINGS BANK

ESTABLISHED 1855

THE UNION SAVINGS BANK

ESTABLISHED 1869

A willing Servant in Every Home for

*Cooking*

*Water Heating*

*Room Heating*

*Ironing*

*House Heating*

*Clothes Drying*

*Incineration*

*Refrigeration*

*GAS SERVICE*

## FALL RIVER GAS WORKS COMPANY

GENERAL OFFICE:—155 NORTH MAIN STREET

### FOSTER'S

*Now Located At*

29 North Main Street  
opp. Durfee Theatre

SPORT GOODS, JEWELRY

### FOSTER'S

---

### Sam Hall's Music Store

(Established 1919)

CIRCULATING LIBRARY

Gibson Mandolins, Roth Violins, Vega  
Banjos and Trumpets, Martin  
Guitars, Leedy Drums  
and Xylophones

54 North Main Street

### FRIENDS

For the Bride  
and Graduate

Puzzled about what to give? Visit the Electric Shop—there are many happy suggestions, any one of which you will find particularly appropriate.

FALL RIVER ELECTRIC LIGHT COMPANY

85 North



Main St.

High School News

IS FEATURED DAILY IN

THE  
HERALD NEWS

FALL RIVER'S HOME NEWSPAPER

.....some day  
you will own  
a **DIAMOND**.....

We hope it will be one that has  
been carefully selected from  
hundreds of others,

for its flawless beauty  
its brilliancy  
its perfect cutting.

....that is the kind  
we sell.....

**WONSON, INC.**

*Jewelers*

154 SOUTH MAIN STREET

C. J. LEARY & SONS, INC.

PRINTERS

130 SOUTH MAIN ST.—HUDNER BUILDING—149 SECOND STREET

*Compliments of*

Nu Gamma Sigma

*Compliments of*

VIVE SOCIETY

*Compliments of*

**The  
JETTE STUDIO**

PHOTOGRAPHERS

303 South Main Street

*We thank you, Class of 1931,  
for your patronage.*

*We wish you STRENGTH  
and COURAGE in the Battle  
of Life.*

**LYNDONVILLE  
CREAMERY  
ASSOCIATION**

Speedwell Farms Dairy  
Products

ICE CREAM

MILK, CREAM, BUTTER AND  
FANCY CHEESE

Telephone 3773

Let us assist in creating that  
cozy atmosphere in  
your home.

OUR BERKEY & GAY FURNITURE  
IS MODERATELY PRICED

**Modern Furniture Co.**  
376 South Main Street

---

**William H. Hickey**

Registered Pharmacist

314 So. Main St.      Columbian Bldg.

---

Telephone 1696

THE NEW  
**Cathay Restaurant**

American and Chinese Restaurant  
95 No. Main Street      Fall River, Mass.

*Eyes Examined Glasses Fitted*

**PAUL O. BARRE**

OPTOMETRIST - OPTICIAN

1503 Pleasant Street

---

*Compliments of*

**STERN'S  
Auto Supply**



*Compliments of*

FIDAMIES

HOTEL MELLEN

FALL RIVER'S LEADING HOTEL

*Under New Management*

*Homelike Atmosphere*

Dodge Studio

187 NORTH MAIN STREET

FALL RIVER, MASS.

*Compliments of*

Gay's Art Galleries

THE BEST IN PHOTOGRAPHY

---

*Compliments of*

EPSILON

---

*Compliments of*

Nobby Men's Shop

---

TALBOT'S

Frank C. Nichols  
Co.

251 Bedford Street

IVER JOHNSON  
VELOCIPEDS



Frank C. Nichols  
Co.

251 Bedford Street

STOVE REPAIRS

D. R. Radovsky  
H. Wm. Radovsky  
I. H. Simon

LAW OFFICES  
2-3-4-5-6 HUDNER BUILDING  
FALL RIVER, MASS.

*Compliments of*

Eagle Restaurant

HUTCHINSON'S  
ART SHOP

PICTURES, PICTURE FRAMING  
ARTISTS' SUPPLIES

*Diplomas Framed*

154 Second Street

Kaplan Bros.

300 South Main Street  
139-143 Pleasant Street

PIANOS  
*Mason - Hamlin - Knabe*  
*Chickering*

KARPEN LIVING ROOM  
FURNITURE

M. ALMA GAGNON  
Piano School

M. Alma Gagnon Camiel, Dir.

413 South Main Street  
Opp. Morgan St.

PHONES: 7589-W and 7589-R  
Send for Catalogue

*Compliments of*

John Friar

*Compliments of*

Chuna Wong Restaurant

72 Second St. 42 Pleasant St.



YOUTH  
CHOOSES

**Bachrach**

Photographs of Distinction

56 North Main St. Tel. 4703

Special Rates to Durfee Students

JOHN P. NOWELL, JR.

MILL STOCKS

INVESTMENT SECURITIES

Archer Building 38 Rock St.

*Compliments of*

Amici Club

Edward E. Mellen

*Manager*

NEW ENGLAND

TELEPHONE & TELEGRAPH CO.

Robert A. Wilcox Co.

INCORPORATED

PAPER DEALERS AND

STATIONERS

116 Bedford Street

**true**  
**REPRODUCTIONS**  
*of*  
*Drawings and*  
*Photographs*

Specialists in Designs & Engravings  
for School and College Annuals

Q  
U  
A  
L  
I  
T  
Y

*The*  
**BICKFORD**  
ENGRAVING & ELECTROTYPE CO.  
20 MATHEWSON ST., PROVIDENCE, R.I.

S  
E  
R  
V  
I  
C  
E

