

THE
Durfee Record

Sunt sua praemia laudi



CLASS OF 1934

B. M. C. DURFEE HIGH SCHOOL

FALL RIVER, MASSACHUSETTS

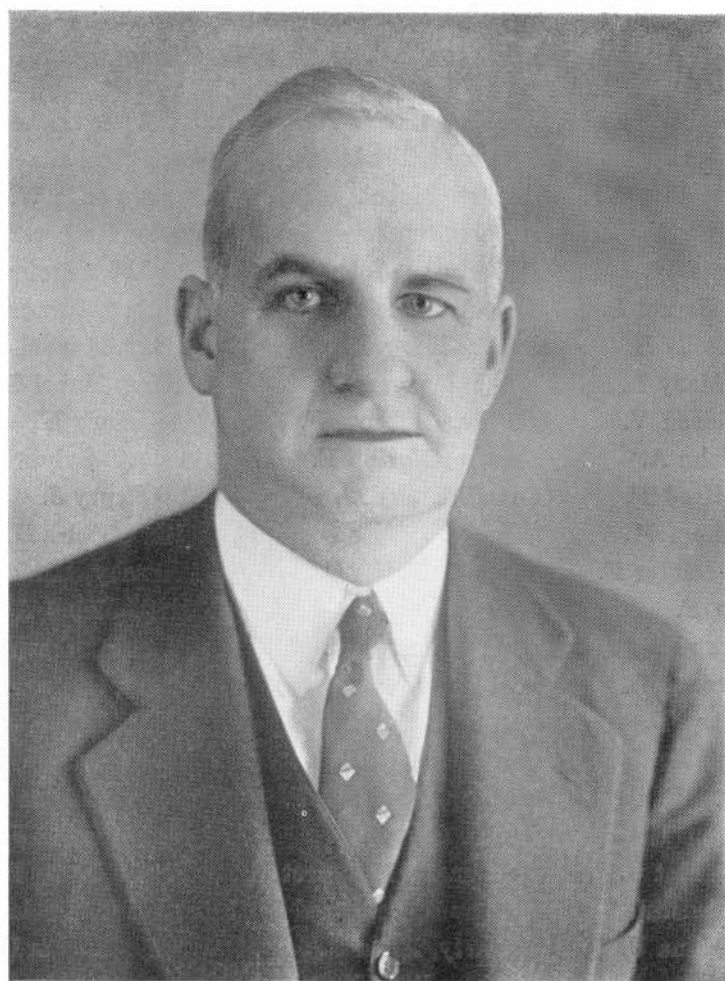
TO
CHARLES VINCENT CARROLL

OUR BELOVED PRINCIPAL AND ADVISOR

DO WE,

THE CLASS OF 1934,

DEDICATE THIS BOOK



THE FACULTY

Principal

CHARLES V. CARROLL

Vice Principals

RALPH M. SMALL

JOSEPH O. CARROLL

Allard, Louis A.	Foulkes, Carrie T.	O'Neil, Annie L.
Allen, Ralph C.	Gottwald, Frederick J.	O'Neil, Isabelle
Andrus, Don F.	Harlow, Mabel	Orcutt, Leslie W.
Ashley, Myron T.	Harrington, Frederick J.	Pickup, Herbert W.
Bent, Eugenie W.	Harrington, John J.	Pratt, F. Antoinette
Brightman, Ernest L.	Jouett, Blanche I.	Pritchard, Florence G.
Campbell, Emily B.	Judge, Mary E.	Ramsay, Maybelle E.
Carpenter, Mary L.	Keeffe, Margaret F.	Robbins, Mabel S.
Carroll, Mildred V.	Keeley, Ambrose F.	Ryan, Mary E.
Carvalho, John A.	Kernan, Marion E.	Seagrave, Sylvia W.
Chase, Winifred F.	Lane, Frank D.	Shea, Henry J.
Cleare, William M.	Langford, Alice G.	Smith, Charles D.
Coggeshall, Dexter E.	Laporte, Louise C.	Smolensky, Hilda I.
Cole, Lillian F.	Lautal, Olga A.	Spring, Mabel A.
Conlin, James F.	Lawlor, Joseph J.	Sullivan, Catherine L.
Connors, George L.	Lee, Mary	Sullivan, Catherine R.
Connors, Mary B.	Lomax, Katherine	Sullivan, Daniel J.
Cook, Berton E.	Lord, John G. E.	Sullivan, Dorothy C.
Coyle, George F.	Lowney, Margaret F.	Sullivan, Helena V.
Crowley, John T.	Lynch, Harry P.	Sullivan, Louis J.
Dailey, Margaret G.	Maedonald, Margaret E.	Sullivan, Mary H.
Davis, E. Christine	Maronpot, Raymond P.	Thompson, Marian R.
Delahanty, Edna U.	McCarty, Anna G.	Torphy, Marion L.
Delahanty, John A.	McHale, Rose E.	Townsend, Ella L.
Dolan, Mary A.	Mello, Victor E.	Townsend, John M.
Dow, Ruth N.	Miles, E. Estelle	Vosburgh, Ruby M.
Duffy, Andrew L.	Mitchie, George A.	Walsh, Anna F.
Earle, Charles C.	Nawrocki, Stephen	Wellington, Barbara
Fletcher, Ralph J.	Newkirk, Ruth W.	Williston, Amasa F.
Forster, Gladys G.	O'Connor, Margaret M.	Withrow, Helena H.

Acknowledgment

WE WISH to extend our sincere gratitude to Mr. Harry P. Lynch, our faculty advisor, for his priceless aid in the editing of this book.

—The Staff.

In Memoriam

William F. Chisholm

Teacher and head of Commercial Dept.
September 1924—August 1933

Virginia R. Moore

Died in June, 1933

Francis Quinn

Died in April, 1932

HALL OF FAME

JAMES HANIFY

ARTHUR F. SULLIVAN, JR.

DORIS COLWELL

DOROTHY M. HOPWOOD

FRANK J. HALLIGAN

ARMAND CHABOT

CHARLES SUTCLIFFE

MILTON BOR

ERNEST HODGSON

A. EARLE HINDLE



CLASS OFFICERS

President - - - - - JAMES HANIFY

Vice President - - - - - CLINTON WALCH

Secretary - - - - - ALBERTINE MELLO

GERTRUDE ABBOT

"Judy"—"Giddy"

Traffic Officer 3

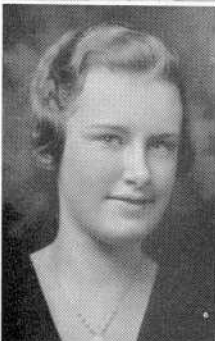


DAVID DANIEL ALLSOP

"Dave"

DOROTHY R. ALLARDICE

"Dot"

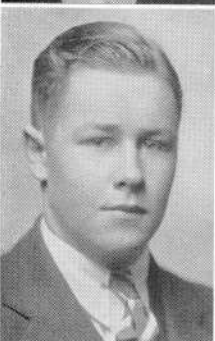


ANIBEL M. ALMEIDA

"Neeb"

Electrical Club 4

ALBERT ALLEN



MELVINA ALMOND

"Mel"

Home Room Director 2
Library Aid 3, 4

EVELYN SLATER ALLEN



BELMIRA ANDRADE

"Bel"

Commercial Club 2, 3, 4

HERVEY AUDET

Commercial Club 4



MADELINE BAKER

"Mal"

Commercial Club 2, 3, 4



ELSA AULISIO

Commercial Club 2, 3, 4



ELVA MARY BALL

"El"



LLOYD GEORGE BAILEY

Commercial Club 2, 3, 4



THELMA MAUDE BALL

"Thel"



RUTH BAILEY

Commercial Club 2, 3, 4



ANNA M. BANAS

"Anne"

Commercial Club 2, 3, 4



ANITA BARBELLE

"Babs"

Design Guild 3, 4



JUNE BARNES

"Jun'e"

Commercial Club 2

EMILY ESTES BARKER

"Em," "Boots," "Bill"

Commercial Club 2, 3, 4



EDNA BARON

"Eddie"—"Ed"

Library Aid 1, 2, 3, 4
Forum 3, 4
Vice Pres. of S. A. A. 3
Library Club 4
Design Guild 4

ALICE LETITIA BARLOW

Orchestra 1, 2, 4
Health Councillor 2



LOIS BARTON

Library Aid 3, 4
Home Room Director 2

GEORGE BARNES



MARIAN JULIA BAUER

"Julie"—"Bunnie"

Commercial Club 2, 4

MARIAN BAZAR

"Barzy"



ANITA BERARD

Design Guild 4

MORTON BEDRICK

Record Book Staff 4
Forum 4



RITA BERNARD

"Reet"

Home Room Director 3
Commercial Club 2, 3, 4

RITA BEDRICK



PAUL A. BERNIER

"Pauly"

FAITH BENNETT



RITA BEVILACQUA

"Beve"

Commercial Club 2, 3

STEPHEN BIELLO



ALICE BLAKELEY



"Millie"

Commercial Club 2, 3, 4

DONALD BLACK



LORETTA E. BLANCHARD



Home Room Director 1, 2, 3
Commercial Club 2, 3, 4
Orchestra 1, 2
Health Councillor 2

ARTHUR H. BLAISDELL

"Art"

Commercial Club 4



ALAN H. BODGE



ELEANOR F. BLAKE

Home Room Director 4



ROBERT C. BOGLE

"Bob"—"Bugs"

Basketball Manager 4



ROY PAUL BOLDUC

Electrical Club 2, 3, 4
Football 2, 4
Varsity Club 4



PHYLLIS MARIAN BOOTH

"Phyl"

Commercial Club 2, 3, 4



DAISY THELMA BOLGER

"Spike"—"Farmer"

Orchestra 4
Band 4



MILTON BOR

"Mickey"

Football 2, 3, 4
Basketball 2, 3, 4
Baseball 2, 3, 4
Varsity Club 2, 3, 4
Commercial Club 2, 3, 4



PAULINE E. BOLGER

"Paul"

Design Guild 4



MARIAN GIFFORD BORDEN

Hilltop 4



CLAUDETTE BONNOYER

"Claude"

Commercial Club 2, 3, 4



CLARA JOAN BOZIAN

"Pansy"

Commercial Club 2, 3, 4



AUDREY M. BRADBURY

Home Room Director 2, 4
Health Councillor 2
Hilltop 4
Record Book Staff 4



DENNIS BROCHER

"Denny"
Commercial Club 4

MARJORIE E. BRADSHAW

"Marge"—"Margie"
Commercial Club 2, 3, 4



JOHN HENRY BROWN

"Johnny"

JACK BRIAN

Pin and Ring Committee 3
Debating Team 3
Dramatic Club 3, 4
Forum 3
Record Book Staff 4



JOSEPH L. BROWN

"Brownie"
Traffic Squad 2
Commercial Club 2, 3, 4
Forum 2

PATRICIA BRINDLEY

"Pat"
Commercial Club 3
Vice President 4
Hilltop 4



MADELINE BROWN

"Tishy"—"Brownie"

LOUIS JOSEPH BSHARA



ETHEL LOUISE BUTLER

Orchestra 3, 4



GERTRUDE V. BUGARA

Commercial Club 2, 3, 4
Hilltop 3, 4



JOHN G. CANULLA

Commercial Club 4



JOHN A. BURKE

"Johnny"

Chorus 2



OLGA MARY CANULLA

Commercial Club 2, 3, 4



ADA PEARL BUTLER



STEPHEN FRANCIS CAREY

"Moxie"



DORIS PICKFORD CARR

"Dot"



HELEN M. CAVANAUGH

"Cavvy"



THERESA J. CARREIRO

"Tree"

Home Room Director 1, 3



RAYMOND CAYER

"Bing"

Football 2, 3



BERTHE A. CASTONGUAY

"Beth"—"Bert"

Dramatic Club 3, 4
Vice President 4
Forum 3, 4
Dance Committee 3, 4
Associate Ed. Record Book 4



ANN CETOLA

"Sue"—"Jan"

Commercial Club 4



RALPH CASTONGUAY

Dramatic Club 3, 4
Hilltop 3, 4
Associate Editor 4
Record Book Staff 4



LOUISE HEATH CHACE



MYRON B. CHACE

"Chacy"

Home Room Director 3



CATHERINE JOAN
CHIPPENDALE

"Chippy"

Home Room Director 2
Orchestra 2, 3, 4



ELSIE CHAPMAN



CLAIRE A. CHORLTON

Chorus 4
Design Guild 4



EUNICE G. CHAPPELL

Health Councillor 2
Library Aid 3, 4
Home Room Director 4
Dramatic Club 4



MARJORIE L. CLARK

"May"—"Clarkie"



ALBERT H. CHENARD

"Al"



WILLIAM H. CLARKE, JR.

"Bill"

Electrical Club 3, 4



JAMES ROBERT CLARKIN

"Jimmy"

Gift Committee 4



RUTH AVERY COBB

"Cobby"

DOROTHY CLIFTON

"Dot"



RUTH R. COHEN

"Ruthie"

JOSEPH DANIEL COADY



WILLIAM CODY

Traffic Squad 4

ANNA ELIZABETH COBB

"Ann"—"Cobbie"



ANNETTE H. COLLINS

"Nettie"

Commercial Club 2
Literary Club 4
Hilltop 4

DORIS COLWELL

Health Councillor 2
Commercial Club 2, 4
Hilltop 3, 4
Editor 4



GEORGE E. CONNORS

Band 2, 3, 4
Home Room Director 4



REGINALD COMEAU

"Reg"—"Reggie"

Home Room Director 1, 3
Commercial Club 2, 3, 4
Traffic Squad 2
Health Councillor 2

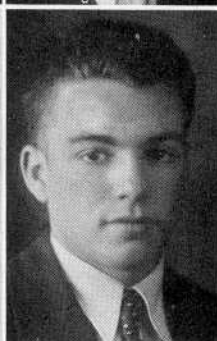


HENRY CONROY

CECELIA M. CONCANNON

"Cee"

Home Room Director 2, 3
Hilltop Staff 4
Dance Committee 4



MICHAEL CONROY

GERARD CONNOR

"Jerry"

Baseball 2, 3, 4
Varsity Club 4
Chorus 2, 3



MARY C. CONWAY

"Mer"—"Wishy"

Forum 2
Cheer Leader 3
Dramatic Club 3

MARGARET W. COOKE

"Cooky"—"Peggy"

Health Director 2
Dance Committee 3
Library Aid 3, 4
Photograph Committee 4



FRANCIS CORY

DONALD B. COPELAND



MARGARET S. COSTELLO

"Shirley"

Photograph Committee 4
Hilltop 4

ROBERT CORCORAN

Orchestra 2, 3, 4



JOHN JOSEPH COTE

FOUAD COREY



GEORGE COURNAN

"Scotty"—"Scothie"

HENRY J. COURVILLE



MARION V. CREAMER



JOSEPH F. CRANE

"Joe"

Basketball 3
Football 3



FRED CROWTHER

"Blondie"



JESSIE COOK CRAWFORD

Commercial Club 2, 3



DOROTHEA P. CULLEN

"Dot"

Home Room Director 3, 4
Commercial Club 2, 3, 4



WESLEY CRAWLEY

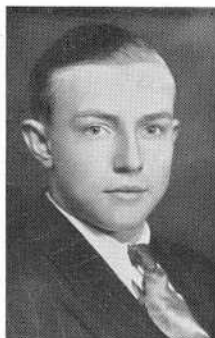


JOHN LEONARD CURRY

"Joe"



WILLIAM F. CURRY



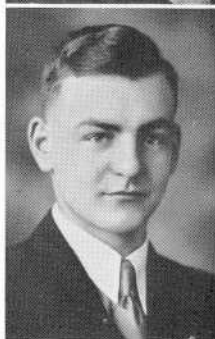
WINSTON DALLMAN



GEORGE S. CUSHMAN

"Stalcy"

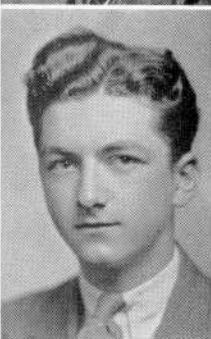
Track 2, 3, 4



VINCENT D'ANDREA

"Vin"

Home Room Director 4
Dramatic Club 4



KATHERINE T. DALEY

"Kay"



BERNICE F. DARLING

"Bernie"

Health Councillor 2



MICHAEL JOSEPH DALEY

"Mickey"

Basketball 2, 3
Health Councillor 2



ELIZABETH G. DASSANCE

"Betty"

Home Room Director 4



CHARLES T. DAVENPORT
"Charlie"—"Steve"



VERA B. DEMARANVILLE



EDITH MAE DAVIS
"Mae"
Commercial Club 2, 4



THOMAS K. DENTON
"Dent"—"Willie"
Hilltop 4



MALCOLM HALL DEARDEN
Library Aid 3, 4
Dramatic Club 3



ANNA C. DEPAOLA
"Rinda"



MATTHEW DEC



JOHN JAMES DERRIG
"Johnnie"
Basketball 2, 3
Electrical Club 4



EDNA L. DESCHENES

Commercial Club 2, 3, 4



THOMAS DiSANTO



CECILE M. DESSERT

Commercial Club 2, 4
Home Room Director 1



MARY HELENA DOLAN



THOMAS F. DEVINE

"Tom"—"Tommy"

Home Room Director 2, 3
Dramatic Club 3, 4
Dance Committee 4
Councillor of S. A. A. 4



LEO FRANCIS DONOVAN

Commercial Club 2, 3, 4
Forum 2, 3
Home Room Director 3
Traffic Squad 2



CATHERINE DILLON

"Kay"

Commercial Club 2, 4



JOHN J. DOORIS

Electrical Club 3, 4
Forum 2



HELENA C. DOWLING

Commercial Club 2, 4



ELMER B. DURFEE, JR.

"Durk"

Band 1, 2, 3
Orchestra 1, 3
Business Manager 3

MARGARET L. DUGAN

Home Room Director 2, 3, 4
Library Aid 3, 4
Commercial Club 4



ESTELLE DURFEE

"Stelle"

Commercial Club 2, 4

RITA DUMAIS



MARGARET CLARA EALES

"Peggy"—"Peg"

Home Room Director 3
Commercial Club 2, 4
Chorus 3
Hilltop Staff 4
Dramatic Club 3, 4

RAOUL DUQUETTE



SUSANNE EARNSHAW

"Sue"

EVERETT H. EDDLESTON

"Eddie"

Commercial Club 3, 4



ESTHER E. FALTUS

"Stubby"

Orchestra 2, 3
Commercial Club 2, 3, 4

HERBERT EDWARDS

"Eddy"



CATHERINE C. FARIA

"Katty"

Commercial Club 2, 3, 4

GEORGE NAGEB ELIAS

"Georg"



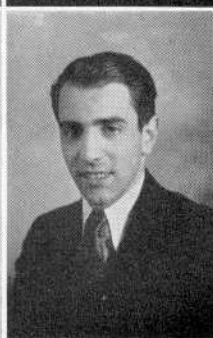
BELLA FARIAS

Commercial Club 2, 3, 4

MILTON EARL ELLIS

"Mint"

Electrical Club 3



ALBERT FARINHA, JR.

STANLEY J. FARYNIARZ

"Count"

Chorus 2



VINCENT JAMES FERRIS

"Vinnie"

Advisory Committee 4
Traffic Squad 4

ANNETTE FAUCHER

Commercial Club 4



EDMOND W. FILLION

"Eddie"

Commercial Club 3 4

JAMES ALOYSIUS FAY



CATHERINE E. FINUCANE

"Kay"—"Finy"

Commercial Club 2, 3, 4

PHILIP FELDMAN

"Phil"

Councillor of S. A. A. 2
Home Room Director 3
Dramatic Club 4



LOUIS FIORE

"Mike"—"Fiery"

Home Room Director 1, 2, 3, 4
Forum 2, 3
Traffic Squad 2, 3—Capt. 4
Baseball 2, 3, 4

ANNA J. FLANAGAN



RALPH M. FRIAR

Pin and Ring Committee 3
Dramatic Club 3, 4



RAYMOND FORCIER

"Ray"

Commercial Club 4



PEARL FREEDMAN

"Pearlie"

Dramatic Club 4
Glee Club 4
Commercial Club 2, 3, 4



VIRGINIA FORREST

Cheer Leader 3, 4



PETER FURGIUELLE

"Pete"

Dramatic Club
Track 3, 4



LYNWOOD FRENCH

Traffic Squad 2, 3, 4
Band 3



WILLIAM C. FURZE

"Bill"



EVELYN IRENE GAGNON

"Husky"

Traffic Squad 3



ALICE GAUDREAU

Commercial Club 2, 3, 4

MABEL JEANNE GALLERY

"Mae"

Home Room Director 2, 3
Traffic Squad 2



FRANCIS A. GAUTHIER

"Spence"

Band 1, 2
Orchestra 3

JEANNE T. GAMACHE

Commercial Club 2, 4



CECILIA A. GENDRON

"Sis"

Home Room Director 4

MAUREEN M. GARVEY

"Meme"—"Meg"

Record Book Staff 4



MARY ANGELA GINGRIS

MILTON GITLIN

Dramatic Club 4



JOSEPH GORMAN

ARTHUR E. GLADU

"Art"



GISELDA GRAGNANI

Commercial Club 2, 3, 4
Glee Club 4
Orchestra 1

CHARLES H. GOODWIN

"Charlie"



SOPHIE GREEN

"Sophia"

Commercial Club 2, 3, 4
Chorus 4

MILDRED R. GOLDSTEIN

"Millie"

Glee Club 3, 4
Dramatic Club 4
Gift Committee 4



HELENE D. GREENBAUM

"Greenie"

CARLTON R. GREENHALGH

"Peppy"

Home Room Director 1, 4
Secretary of Health Club 2
Traffic Squad 2
Baseball 3, 4
Photograph Committee 4



JOHN GRYGIEL

"Scotty"

MARION IZETTA GREGSON

"Greggie"

Design Guild 2, 3



RITA GUAY

"Rit"

Commercial Club 2, 3, 4
Home Room Director 2
Record Book Staff 4

RUTH E. GRIFFAULT

"Ruthie"

Commercial Club 2, 3, 4



NORMAN C. GUERTIN

JULIETTE V. GRONDIN

"Judy"—"Julie"

Commercial Club 2, 3, 4



EARL HADLEY

MARY M. HAGGERTY

"Dixie"

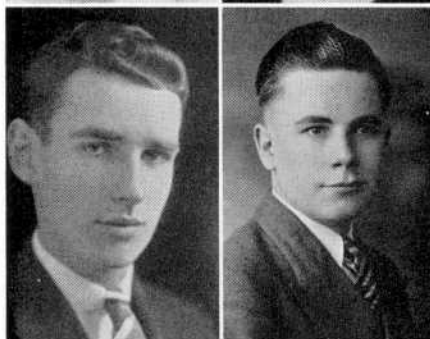
Commercial Club 2, 3



MARY M. HAMPSTON

FRANK J. HALLIGAN

Editor Record Book 4
Dramatic Club 4
Home Room Director 2
Dance Committee 4



CHARLES K. HANDFIELD

"Handfield"

Electrical Club 3, 4

EILEEN MARY HALLISEY

Commercial Club 2, 3, 4



JAMES DAMIEN HANIFY

"Jim"

President Class 2, 4
Chairman Pin & Ring Com. 3
Library Aid 2, 3, 4
Debating Team 3
Dramatic Club 3

H.ELIZABETH HAMPSTON

Commercial Club 2, 3, 4



DOROTHY MARY HANLEY

Hilltop Staff 3, 4
Business Manager 4
Commercial Club 2, 4

EILEEN C. HANLEY

Commercial Club 2, 3, 4



JAMES M. HARRINGTON

"Jim"

Photograph Committee 4

ALICE M. HARGRAVES

Commercial Club 2, 4



THOMAS HARRINGTON

ALICE C. HARRINGTON

Literary Club 4
Home Room Director 4
Record Book Staff 4
Advisory Committee 4



RAYMOND R. HARRISON

"Bob"

Chorus 2
Baseball 3, 4
Varsity Club 4

FRANCES L. HARRINGTON

"Fran"—"Frannie"



PAUL HARROP

"Rusty"

LOUISA FRANCES HART



BEATRICE EDNA HEAP

"Be"

Commercial Club 2, 3, 4



WILLIAM C. HART

"Bill"

Dramatic Club 3, 4
Band 4
Literary Club 4
Record Book Staff 4
Dance Committee 4

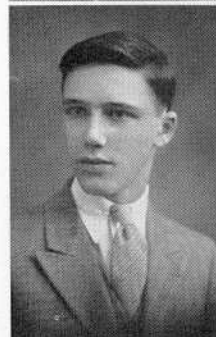


ARLINE CECILIA HEAP

Commercial Club 2, 3, 4



EVERETT H. HARTLEY



HELEN RITA HENRY

Commercial Club 2, 3, 4



RICHARD A. HARTLEY

"Dick"



MARGARET M. HIGGINS

"Peggy"

Commercial Club 2, 4



JEAN FRANCES HILLIARD

Dramatic Club 3, 4



MARY J. HOLLAND

Commercial Club 2, 4

ALSTON EARLE HINDLE

"Legs"

President Commercial Club 4
Home Room Director 4
Advisory Committee 4



MARY D. HOPKINS

Commercial Club 2, 3, 4

ERNEST HODGSON

"Ernie"

Baseball 2, 3, 4—Captain 4
Football 2, 3
Basketball 2, 3, 4
Varsity Club 3, 4



DOROTHY HOPWOOD

"Hoppy"

Dramatic Club 3, 4
President 4
Forum 4
Hilltop 4
Record Book Staff 4

HELEN M. HOFFMAN

Home Room Director 1
Commercial Club 2, 3, 4



SIDNEY HORNSTEIN

"Sonny"

EDITH G. HOWARD

Commercial Club 3 4



ERIC HUTCHINS

"Skipper"—"Skip"—"Cap"

GERTRUDE E. HUARD

"Gert"

Commercial Club 2, 4



LINCOLN W.
HUTCHINSON

"Linc"

Electrical Club 3, 4

SAMUEL HURST



RUSSELL H. IBBOTSON

"Bud"

Home Room Director 2, 3, 4

JOHN K. HUTCHINGS

"Johnny"



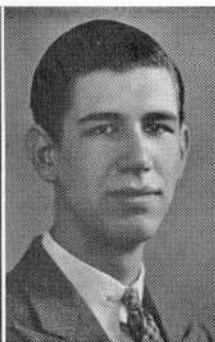
VIRGINIA JANE IBBOTSON

"Vigen"

Home Room Director 2, 3
Ring & Pin Committee 3
Dramatic Club 4
Health Councillor 2

ALFRED INGHAM

Commercial Club 2, 4



ROGER G. JETTE

JOSEPHINE F. IVANCIN

"Jo"

Commercial Club 2, 4



CHARLOTTE R. JOZEWYCK

Commercial Club 4

THELMA T. JAMES

"Thel"

Commercial Club 2, 3, 4



GERTRUDE LEONA KANE

ANNA JETTE

Commercial Club 2, 3, 4



KATHRYN ANNE KANE

STEPHEN W. KAPITAN
 "Kappie"—"Steve"—"Kap"



ELIZABETH C. KEEFE
 "Boots"
 Commercial Club 2, 3, 4

YETTA A. KAPITANOFF



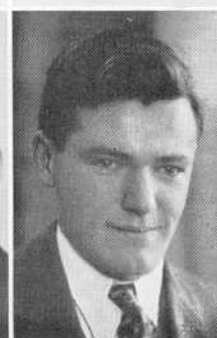
BARBARA P. KEELEY
 "Bob"
 Home Room Director 3
 Commercial Club 3, 4
 Dramatic Club 4

ELENORE KATZ
 "Ellie"



CLAIRE KEILTY

EDWARD JOSEPH KAYLOR
 "Eddie"
 Track 4



JOHN KELLY

FRANCIS KENYON
"Irish"



ANNIE KITECK
"Ann"



RITA FRANCES KENYON
"Ken"—"Kennie"
Commercial Club 3, 4



JAMES KNIGHT
Dramatic Club 3, 4
Library Aid 4



M. VIRGINIA KERRIGAN
"Ginnie"—"Kerry"
Library Aid 3, 4
Vice President 4
Photograph Committee 4
Asst. Bus. Mgr. of Hilltop 4



RICHARD G. H.
KNIGHT, JR.
"Dick"



MOIRA ESTELLE KISPERT
Orchestra 2
Home Room Director 3
Library Aid 3, 4
Secretary 4



ARGIR N. KONDOS



JENNIE KORAHAKES

"Jen"

Commercial Club 2, 3, 4



ANNA ELEANOR KUZLA

"Ann"

Commercial Club 4

GENEVIEVE KOT



HENRY LAFERRIERE

Track 3, 4

HARRY KRAVIF



CELESTINE LAFLAMME

JOHN P. KRUCZEK



ANGELA LAKE

Commercial Club 2, 3, 4

SARAH ANN LALLY

"Sally"—"Sadie"



PAULINE E. LANGLAIS



RITA LALUMIERE

Commercial Club 2, 3, 4



HENRY LAPHAM



DOROTHY E.
LANDSDOWNE

"Dot"—"Dottie"

Home Room Director 2



GUY LAPIERRE

Health Councillor 2
Traffic Squad 3—Lieut. 3
Home Room Director 3



JEANNETTE A. LANGLAIS



MARIAN PEARL LAURANS

Dramatic Club 3, 4
Forum 2, 3, 4—Secretary 4



MAURICE LAVAUT



PHYLLIS LEAVER

"Phil"

Commercial Club 2, 3, 4



EILEEN E. LAVIGNE



EDITH LEEDHAM

Commercial Club 2, 3, 4



GLEN S. LAWRENCE



MARY LEITE

Commercial Club 4



EDWARD LAWRENSEN

"Teddy"

Home Room Director 1
Traffic Squad 2



LILYAN LEVINE

"Lil"

Commercial Club 2, 3, 4



ELLEN LEVINSON

"Levy"

Commercial Club 2, 3, 4



GILBERT F. LINDSAY

"Gil"—"Scotty"

Home Room Director 1

DOROTHY LEWIS

"Dot"—"Dotty"

Commercial Club 2, 4



CHARLOTTE S. LISCHNER

"Sharlie"

Commercial Club 2, 3, 4

JESSICA LIDMAN

"Jessie"



NADA KAITAN LUCAS

"Nad"—"Enn"—"Ell"

Record Book Staff 4
Asst. Business Manager 4
Hilltop 4—Asst. Bus. Mgr. 4
Forum 3 Library Aid 3, 4
Dramatic Club 3, 4

BESSIE B. LINCOLN

"Bess"

Home Room Director 2
Commercial Club 2, 4



EVELYN F. MACKIE

HELEN MAGRIBY



LEONA MALONE



EILEEN F. MAHONEY



MADELYN M. MALONE

Traffic Squad 3
Home Room Director 2



EDWARD MAJOR



CONCETTA MARCUCCI

"Connie"

Commercial Club 4



MARJORIE A. MALLOZZIE

"Margy"



ALAN S. MANNING

Chairman Advisory Comm. 4
Dramatic Club 3, 4
Forum 3
Debating Team 3
President of Class 3



RAYMOND MARTIN



ALICE E. McARTHUR
Commercial Club 4



ARMAND JOHN MARTINI



JOHN J. McDONALD
"Mac"



MYROSLAVA G.
MATWEJKO

Commercial Club 2, 3, 4
Health Councillor 2



AGNES F. MCGINN
Commercial Club 2, 3, 4



EDGAR MAYNARD



THOMAS MCGLYNN



WILLIAM F. MCGREAVY



JAMES D. MCNERNEY

"Jim"



FRED MCGUINNESS

"Red"



THOMAS MELIA

"Scoop"



JOHN J. MCGUIRE, JR.

"Mack"—"Johnnie Mack"

Baseball 4
Commercial Club 2, 3, 4



ALBERTINE M. MELLO

"Al"

Class Secretary 2, 3, 4
President of Health Club 2
Commercial Club Treas. 4
Library Aid 3, 4
Record Book Staff 4



MARGARET J. MCMAHON



DANIEL MELLO

"Dan"



JAMES V. MENDES



BARBARA R. MINIKIN

"Bobbie"



DOROTHEA MERCER

"Dot"—"Dottie"

Commercial Club 4



DORIS MINKIN

"Dottie"

Commercial Club 2, 3, 4



DANIEL F. MEUSE

"Doggie"



CATHERINE D. MOLLOY

"Kitty"

Commercial Club 2, 3



EUGENE MIGA



ALBERTA E. MOLT

"Bert"

Home Director 2, 4
Dance Committee 4



DOROTHY MONDSHEIN

"Dottie"—"Dorbie"

Commercial Club 2, 3, 4



NORMAND MORRELL

"Norm"

Commercial Club 3, 4
Orchestra 2, 3, 4

LUCILLE MONGEON

Commercial Club 2, 3, 4



MARY PATRICIA MORGAN

"Mae"

CONSUELO M. MONTEIRO

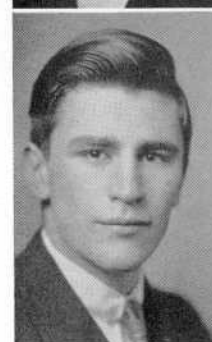
"Connie"



ARLINE GRACE MORIN

Commercial Club 2, 3, 4

FRANK B. MOONEY



RUSSELL V. MORIN

"Russ"

Basketball 3, 4
Baseball 3, 4
Commercial Club 2, 3, 4
Varsity Club 3, 4, Vice Pres. 4

GERTRUDE T. MORRIS

"Gert"

Commercial Club 2, 4



HERBERT STANLEY MOSS

HILDA E. MORRIS

"Hitch"—"Hil"

Forum 4

Dramatic Club 3, 4

Commercial Club 2, 3, 4



MARY E. MOYNAGH

Commercial Club 2, 4

THERESA M. MORRIS

Commercial Club 3, 4



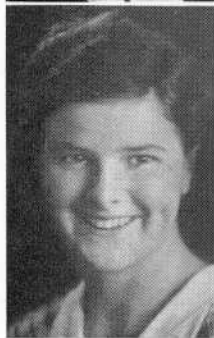
DORIS G. MULLEN

"Dot"

Commercial Club 2, 3, 4

FLORENCE MOSLEY

Commercial Club 2, 4



MARY MULLINS

Commercial Club 4

FRANK MULVENY, JR.

"Monk"—"Spots"

Home Room Director 2, 3
Basketball 1, 2
Football 3



ROSE MARION NADEAU

"Shorty"—"Red"

Commercial Club 4



JANET M. MURPHY

"Murph"

Secretary of S. A. A. 2
Advisory Committee 4
Forum 2



HAROLD C. J. NAGLE

"Hal"

Traffic Officer 4



KATHRYN E. MURPHY

"Kay"—"Kate"

Home Room Director 3
Library Aid 4



CHARLES J. NANNERY

"Charlie"



RITA NADEAU

Home Room Director 2
Literary Club 4
Hilltop 4



IDELLA B. NEREMBERG

Dramatic Club 4
Hilltop Staff 4
Asst. Business Manager 4



EDMUND NEVES

"Eddy"

Dramatic Club 4
Home Room Director 2, 4
Band 4



DANIEL J. O'CONNOR

"Dan"

Advisory Committee 4

KATHRYN O'BRIEN

"Kay"

Commercial Club 2, 3, 4



MARGARET O'DONNELL

"Peggy"

Commercial Club 2, 3, 4

MARY LOUISE O'BRIEN

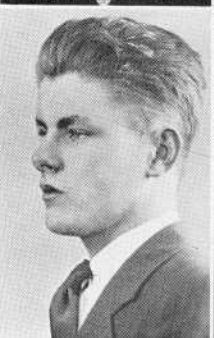


FRANK O'NEIL

WILLIAM J. O'BRIEN

"Fella"

Football 2



GEORGE E. ORTON

"Georgie"

Football 2

MOLLIE OSTROFF

"Mall"

Commercial Club 2, 3, 4



GLADYS PACKER

Dramatic Club 4
Bus. Mgr. of Record Book 4



GERTRUDE D. OWENS

"Gert"

Commercial Club 2, 3, 4
Hilltop 4



JAMES PADDEN

Football 2, 3
Basketball 2, 3
Baseball 3



ANNA PACHECO

"Teeny"

Commercial Club 2, 4



GLADYS ANN PANAGAKIS

"Jay"—"Pannie"

Commercial Club 3, 4



IRENE BENT PACHECO

Home Room Director 2, 3



JOSEPH EUGENE PAQUET

"Joe"—"Gene"

Traffic Squad 3, 4



ANNETTE PAQUETTE



RUTH PARISEAU

Commercial Club 4



LEONARD O. PAQUETTE

"Len"

Football Manager 4
Home Room Director 2, 3, 4
Baseball 3
Commercial Club 4



WALLACE PARISEAU

"Wally"

Basketball Manager 4
Traffic Squad 2, 4, Lieut. 4
Commercial Club 2, 3, 4



ALBERT C. L. PAQUIN



LEO PARISEE



LIONEL C. PARADIS

Orchestra 2
Band 2
Commercial Club 2



NORMAN JOHN PARR

"Freckles"



MARION LOU PARVO

"Shorty"

Commercial Club 3



ELEANOR GLADYS PERRY

ALBAN PELLETIER

"Bar"



VIOLET V. PERRY

"Ray"

ANTHONY C. PERREIRA

"Tony"

Home Room Director 1



DORIS PICKERING

"Dot"—"Dottie"

Commercial Club 2, 4

JOHN C. PERREIRA

"Jack"

Commercial Club 4



MILDRED PICKERING

"Mickey"—"Millie"

Commercial Club 2, 3, 4

ALBIN J. PIKUL

Band 3, 4
Chorus 2



WILLIAM B. PLOUFFE, JR.



BENJAMIN PIMENTAL

"Ben"—"Benny"

Dramatic Club 4
Record Book Staff 4



ANNE D. POGUBILA

"Annabelle"

Commercial Club 2, 3, 4



CLAIRE PINEAULT

"Cleo"

Commercial Club 3, 4



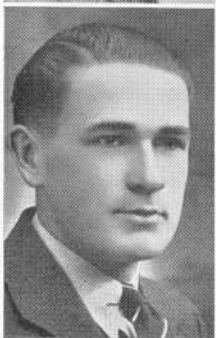
RAYMOND POGUBILA

"Duke"

Varsity Club 4
Tennis 4
Home Room Director 2, 3
Commercial Club 2, 3, 4
Health Councillor 2



EDWIN PLANT



ARTHUR E. PONTON

Traffic 4



FRANK PORTER

Orchestra 2, 3
Chorus 3, 4
Record Book Staff 4



DOROTHEA M. PRAIRIE "Dot"

Dramatic Club 4
Secretary 4

FREIDA POSNIACK

Forum 4
Dramatic Club 4
Commercial Club 4



ANITA JUNE PREBLUDA

Orchestra 1, 2, 3, 4
Chorus 3, 4
Commercial Club 2, 3, 4

DOROTHY C. POWERS

"Dot"

Commercial Club 2, 3, 4



ISIDORE I. PREBLUDA

"Is"

Forum 1
Dramatic Club 4
Forum 2

MARY E. B. POWERS

"Betty"

Dramatic Club 4



HELENE PREVOST

"Penny"

Traffic Squad 2
Dramatic Club 3, 4
Home Room Director 4

RHEA LILLIAN PRUNEAU

"Rae"

Commercial Club 3, 4

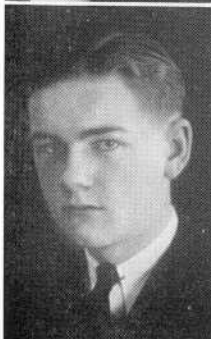


ALEXANDER L. RAYMOND

"Aleck"—"Freckles"

RALPH R. PURDY, JR.

Commercial Club 2, 3, 4



ROBERT REED

Traffic 2, 3, 4
Baseball Assistant Manager 3

JOSEPH H. RADOVSKY

Dramatic Club 4
Forum 2

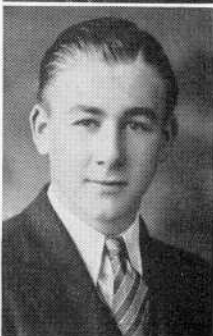


RUSSELL A. REED

"Russ"—"Reedy"

Football 2, 4
Track 1, 2, 3, 4
Varsity Club 4
Home Room Director 4

JOHN RAPOSA



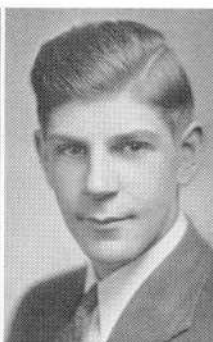
EDWARD JOSEPH REGAN

"Ed"

MARY LOUISE REID

"Min"

Commercial Club 2, 4



JAMES AYRE RIDGE

"Ridgie"

FRANCIS J. REIS

"Bud"



IRVING H. REINDEAU

"Irv"

Dramatic Club 4

MURIEL RUTH REMICK

"Mim"—"Mimi"

Dance Committee 3
Home Room Director 4
Dramatic Club 4
Hilltop 4



URSULA MARY RILEY

Commercial Club 2, 4

LORRAINE N. RESENDES

"Tootsie"

Design Guild 2, 3



ALBERT FRANCIS ROBERT

"Al"—"Bob"—"Rabbit"

FRANCIS E. ROBERTS

"Gins"

Baseball 3, 4



SADIE KARNEE ROSPUT

"Sade"—"Rasputin"

Home Room Director 1
Commercial Club 2, 3, 4

BETSEY ROBERTSHAW

"Bets"

Home Room Director 2, 3



LEO JOSEPH ROSS

EDWARD RODGERS

"Ted"



HERMAN E. ROUNDS

"Roundsie"

Home Room Director 4

HARRY ROSSMAN



EVELYN ROUX

Commercial Club 3, 4

LILYAN RUBENSTEIN
Commercial Club 2, 3, 4



JOHN A. SAVARD
Basketball 3, 4
Football 3, 4

JOHN ST. LAWRENCE



WILLIAM SAVICKI
"Bill"
Football 3, 4
Varsity Cub 3, 4

DORIS E. SAMPSON
"Dot"—"Sammie"
Commercial Club 2, 4



CAROLYN C. SCHNEIDER
"Mitzie"—"Hitler"
Hilltop 4
Dramatic Club 4
Forum 3, 4
Chorus 4
Design Guild 4

JOSEPHINE B. SANACKI
"Jo"
Commercial Club 2, 4



RITA RUTH SCHRAER
"Honey"—"Sweetie"
Glee Club 4
Design Guild 4
Chorus 4

ALBERT SCHWARTZ

"Al"

Football 2, 3
Basketball 3, 4
Varsity Club 2, 3, 4



SOPHIA C. SHAHDAN

Home Room Director 2



ISADORE SCHWARTZ

"Izzy"

Home Room Director 2, 3
Tennis Team 3, 4
Library Aid 4
Varsity Club 3, 4
Treasurer 4



ELLEN SHARROCKS

"Helen"

Hilltop Staff 3, 4
Circulation Manager 4

BERTHA MAE SENAY

"Toots"

Home Room Director 3
Commercial Club 2, 4



JOHN JOSEPH SHEA, JR.

"Joe"

Dramatic Club 3, 4
Hilltop Staff 3, 4
Sports Editor 4

MARY C. SEWELL

"Rickey"

Design Guild 2, 3



RITA D. SHEA

Commercial Club 2, 3, 4

ROBERT SHERET

"Bob"

Hilltop 4



STEPHEN SIMMONS

GILBERT SILVER

Tennis 3, 4



HENRY SIMPSON

INEZ SILVIA

"Betty"

Commercial Club 2, 4



MARGARET J. SINCLAIR

"Peg"—"Jimmy"

Chorus 2

LAURA SIMAO

Commercial Club 2, 3, 4
Home Room Director 1



CHARLES S. SKYPEK

"Sky"

Orchestra 2
Band 2

RITA E. SLAVITSKY

"Reet"—"Slavit"

Commercial Club 2 3, 4



MILDRED SMITH

"Millie"

Commercial Club 2, 3, 4

JENNIE SLINN

"Slinnie"

Commercial Club 2, 3, 4
Secretary 4



LOUISE SIMPSON SNOW

"Weenie"

WILLIAM PETER
CASIMERE SLUSARSKI

"Billy"



RUTH NITA SOBILOFF

"Ruthie"

Councillor of S. A. A. 3, 4
Dramatic Club 4
Forum 3, 4
Asst. Bus. Mgr. Record Book 4

JAMES A. SMITH

"Wimpy"

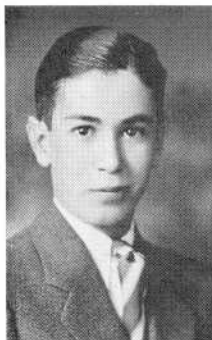


CHARLES B. SOLOMON

"Chick"

Track 2
Assistant Manager 3
Manager 4

ALBERT GEORGE SOUZA



SHIRLEY STEINBERG

Commercial Club 2, 3, 4
Hilltop 4

JOHN T. SOUZA, JR.



ELINOR E. STEVES

"Stevsie"—"Shrimp"

Commercial Club 2, 3, 4
Hilltop 4

PATRICIA H. SPILLER

Home Room Director 2, 3, 4
Gift Committee 4



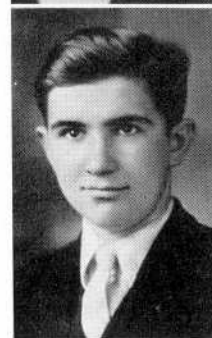
RUTH STROLSKY

"Ruthie"

Commercial Club 2, 3, 4
Orchestra 2

JOSEPH S. STAFFA

"Joe"



FAY SUDACK

Commercial Club 2, 3, 4
Library Aid 4

ARTHUR FRANCIS
SULLIVAN, JR.

"Art"

President of S. A. A. 4
Asst. Editor Record Book 4
Chair. Dance Committee 3, 4
Library Aid 3, 4
Dramatic Club 4



MARGARET M. SULLIVAN

"Peg"

Commercial Club 2, 3, 4

DANIEL J. SULLIVAN

Band 2, 3
Basketball 4



MARY ALICE SULLIVAN

"Al"

Commercial Club 2, 3, 4
Orchestra 3, 4

EDWARD SULLIVAN

"Sully"



RAYMOND D. SULLIVAN

"Ray"—"Sully"

Hilltop 3

HELENA F. SULLIVAN

President of the Chorus 4
Health Councillor 2
Dramatic Club 4



RITA MAY SULLIVAN

Commercial Club 2, 3, 4
Home Room Director 4

RUTH T. SULLIVAN

"Ruthie"

Chorus 2



CHARLES R. TAYLOR

"Champ"—"Hookey"

Golf 3, 4

HERSCHEL FRANKLIN
SUNDERLAND



JOSEPH D. TAYLOR

"Joe"

Track 4
Library Aid 4
Tennis 4

CHARLES SUTCLIFFE

"Butch"

Football 2, 3, 4
Basketball 2, 3, 4
Baseball 2, 3, 4
Varsity Club 2, 3, 4



LUCIE RYDER TAYLOR

"Lou"

CHARLOTTE I. SWISTAK

"Charlie"

Commercial Club 2, 3, 4



FRANCES THORNTON

JAMES A. THORPE

"Jimmy"

Traffic Squad 3, 4
Track 3, 4
Home Room Director 4



JOHN T. TUNNEY, JR.

FRANK H. TOLLEY

"Farmer"

Commercial Club 3, 4



DAVID P. TURNER

"Pip"—"Dave"

Traffic Squad 3, 4
Band 4

MARTHA B. TORGOW

"Mart"—"Bert"

Commercial Club 2, 4



MARY LOUISE TURNER

"Mary Lou"

Commercial Club 2, 3, 4

CHARLES P. TOWNLEY JR

Commercial Club 4



JOHN JOSEPH TYRRELL

"Johnny"

YVETTE A. VALCOURT

Home Room Director 3
Dramatic Club 4
Chorus 4



CLINTON L. WALCH

"Clint"—"Linnie"

Vice President of Class 2, 3, 4
Home Room Director 3, 4
President 4
Debating Team 4, Captain 4
Baseball 4
Record Book Staff 4

FLORENCE VENTURA



EVELYN C. WALKDEN

Home Room Director 4
Chorus 2, 4

JAMES J. VICKERS

"Jimmie"

Library Aid 4
Record Book Staff 4
Gift Committee 4



ANNA CATHERINE WALL

"Ann"

Advisory Committee 4

VIVIAN B. VIGEANT

"Viv"

Commercial Club 4



MURIEL G. WALSH

Commercial Club 2, 4

MURIEL W. WALSH

Commercial Club 2, 4



JANET WATERS

"Jay"

DOROTHY M. WAMBOLDT

"Dottie"—"Dot"



FREDERICK W. WATTS

"Bill"—"Fred"

ESTHER WARING

"Ess"—"Sunshine"

Commercial Club 2, 3, 4
Home Room Director 2, 3



ALICE WEISBERG

"Al"

Commercial Club 2, 3, 4

DOROTHY WATERMAN

Hilltop 4
Home Room Director 4



F. LORAIN WERNECK

Dramatic Club 3, 4

MARY A. WHELAN



RUTH A. WILLIAMSON

"Blushes"—"Duchess"

Commercial Club 2, 3, 4



CAMILLE WHITEHEAD

Home Room Director 3
Commercial Club 2, 3, 4



MARGARET M. WILSON

"Margie"—"Gee"

Commercial Club 3



JOSEPH WHITFIELD

"Joe"—"Bo Bo"

Football 4
Varsity Club 4



JOHN J. WOJCIK

Commercial Club 2, 3, 4
Home Room Director 2



PHILIP B. WILBUR



DOROTHY ELLEN
WOLSTENHOLME

"Dot"

Library Aid 3, 4
Home Room Director 3



EDITH WILSON WOODS

"Edie"

Commercial Club 2, 3, 4



RAYMOND ZACAMY

"Ray"

HELEN G. WOODWARD

Commercial Club 2, 4



CHARLES ZALKIND

Forum 2, 3
Chorus 2
Dramatic Club 4

MILTON J. WROBLESKI

"Rubinoff"

Orchestra 2, 3
Commercial Club 2, 3
Band 4



JOHN ZASMUTTA

Home Room Director 2

VERA WUCHTER

Home Room Director 2
Dramatic Club 4



ROBERT S. ZASS

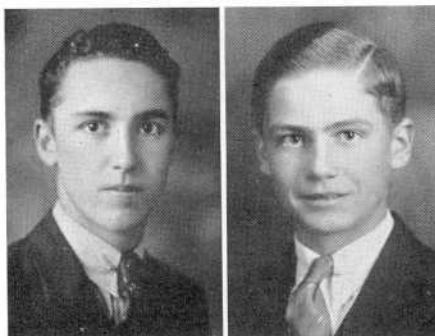
"Bob"

Commercial Club 3, 4

FRED ZEBRASKY

"Zeb"

Varsity Club 4
Basketball 2, 3, 4
Traffic Squad 2



ZYGMUNT ZIOBRO

Home Room Director 2, 4
Traffic Squad 2



ALICE CECILIA O'TOOLE

Traffic Squad 2
Home Room Director 2

ROLAND JOSEPH BAILLARGEON

ANNA MARY BEDNARZ

CHARLES H. BENOIT

ROGER JOSEPH BERUBE

MARGUERITE GIFFORD BESSETTE

THOMAS PETER BILTCLIFFE

ARTHUR HENRY BROUILLARD

MANUEL LIMA BRUM

HONORIO POTVIN CARNIVEL

JEANNETTE CECILE CARRIER

ARMAND LEO CHABOT

MARIAN ETHEL CHRISTENSEN

MARY CLAIRE COFFEY

ANGELA MARGARET CORCORAN

CHARLES H. CROOK

HENRY EDWARD CYNAR

ROSCOE ARNOLD DAVIS

BERTRAND ALFRED DELISLE

GERALDYN MARY DUFFY

PAUL JOSEPH DUNNE

JEANNETTE RITA DURAND
JOHN JOSEPH DZIDUSZKO
JANET FRANCES EASTERBROOKS
ANTONE ESTRELLA
HELEN LOUISE FITZGERALD
FRANCIS JAMES FITZPATRICK
JAMES MATTHEW FOX
HANNAH THERESA MARIE GARSIDE
RALPH BENNETT GREENHALGH
ROBERT CLARKSON GUNN
JAMES LAWRENCE HARRINGTON
MURIEL MAE HIGGINBOTTOM
HERBERT HAROLD HOROWITZ
RUTH LYDIA JONES
WALTER S. KAMINSKI
JOSEPH EUGENE KEATING
JOSEPH KOLESNIK
CHARLES ALOYSIUS LEARY
CHARLES JOSEPH LEARY
QUINLAN FRANCIS LEARY
ANITA MARIE LECOMTE
ARMAND ERNEST LEMIEUX
MARIETTE MARGUERITE LESCAULT
FRANK MORDECAI LIPIS
HENRY LORD
DANIEL LOWE
JOSEPH RALPH MARCUCCI

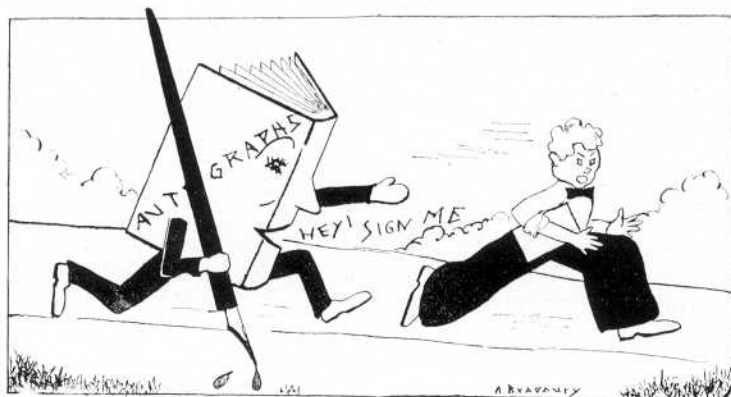
ROBERT EARL MASON
THOMAS PATRICK MATTHEWS
JOSEPH WILLIAM McGRATH
WALTER J. MITCHELL
LINUS JOSEPH MULLALY
EDWARD FRANCIS O'GARA, JR.
MANUEL CARVALHO OLIVEIRA
ROBERT LLOYD PEARCE
EDWARD JOSEPH PICKOS
RAYMOND PLAMONDON
ANTONIO J. REGO, JR.
JOSEPH HENRY REZENDES
ALBERT JOSEPH ROBINSON
CLIFFORD ROBINSON
CATHERINE VERONICA RYAN
ALFRED JACOB SANDLER
DOROTHY FRANCES SHEA
MARK NELSON SHORROCK
ESTELLE BEATRICE SIMARD
MARY RITA PHILOMENA SULLIVAN
JOSEPH JAMES TRAINOR
ALEXANDER JOHN TROUP
JOHN REGO VIERA, JR.
JOHN ELLIOT WATKINSON
ANNIE ZAGAJA
HARRIET ZOLLO



Rita Kenyon
Faith Bennett
Angela Lake
Dorothy Hopwood
Dorothy Hopwood
Berthe A. Castonguay
Alice Harrington
Mary O'Brien
Alice Harrington
Berthe A. Castonguay
Eunice Chappell
Theresa Carreiro
Vera Wuchter
Hannah Garside
Ruth Cobb
Ruth Cobb
Mary O'Brien
Audrey Bradbury
Margaret Cooke
Mary E. Powers
Margaret J. McMahon
Muriel Remick
Virginia Forest
Eunice Chappell
Kathryn Murphy
Arline Morin
Carolyn Schneider

Most Attractive
Most Agreeable
Most Athletic
Most Talented
Most Dignified
Most Interesting
Most Highminded
Most Popular
Most Promising
Most Versatile
Most Studious
Most Mischievous
Most Original
Most Talkative
Best Dressed
Best Dancer
Best Known
Best Natured
Best Looking
Best Speaker
Class Baby
Class Flirt
Class Sport
Class Grind
Class Giant
Class Midget
Class Wit

Michael J. Daley
Daniel O'Connor
Charles Sutcliffe
Jack Brian
James Hanify
Clinton Walch
James Hanify
Charles Sutcliffe
Clinton Walch
Clinton Walch
James Hanify
Charles Zalkind
John McGuire
Charles Zalkind
Raymond Pogubila
Alan Manning
Charles Sutcliffe
Harold Nagle
Daniel O'Connor
Clinton Walch
Charles Zalkind
Francis Reis
Ernest Hodgson
Frank Porter
Russell Morin
John Cote
John McGuire



THE 1934 RECORD BOOK



THE STUDENTS' ACTIVITIES ASSOCIATION

<i>President</i>	- - - - -	ARTHUR SULLIVAN
<i>Vice President</i>	- - - - -	CLAIRE HARRINGTON
<i>Secretary</i>	- - - - -	MARION CROSSLEY
<i>Faculty Advisors</i>	- - - {	- MISS ALICE G. LANGFORD
		- MISS CARRIE T. FOULKES
		- MR. DANIEL J. SULLIVAN

The Students' Activities Association, known to students as the S. A. A., has played a very prominent part in extra curricular work. The influence of this organization, with over fourteen hundred members, has been extended to include every branch of school life. This year, the S. A. A. has been successful in many projects which have all helped greatly to benefit the welfare of the school. They were the annual membership drive, an officers' banquet, the ninth annual convention of the Associated Body of Students Councils of Massachusetts High Schools, the awarding of deltas and gavels, a meeting of home room directors, the bestowal of athletic awards, an advisor's banquet, and the publication of the sophomore booklet.

These projects show how much the Students' Activities Association has contributed to the welfare of the school, and how indispensable it has become.



RECORD BOOK

The editing of the Record Book of 1934 officially commenced with the election of Frank Halligan as editor-in-chief. The editor announced the names of his staff as follows: Berthe Castonguay, Arthur Sullivan, associate editors; Clinton Walch, aide; Morton Bedrick, Audrey Bradbury, Jack Brian, Ralph Castonguay, Maureen Garvey, Rita Guay, Alice Harrington, William Hart, Dorothy Hopwood, Albertine Mello, Benjamin Pimental, Frank Porter, Isidore Schwartz, James Vickers, as assistant editors. Gladys Packer, the business manager, appointed Ruth Sobiloff and Nada Lucas as her assistants.

Upon the selection and organization of the staff, its members immediately launched upon their arduous task of compiling a Record Book worthy of its predecessors. We now offer it to you in the sincere hope that we have completed a volume that ably and concisely sets forth a record of the varied activities and commendable achievements of the Class of 1934 and which shall be a source of inspiration to future graduating classes of the B. M. C. Durfee High School. The staff also wishes to take this opportunity of congratulating Frank Halligan for his unselfish devotion to the task of editing this Record Book and of expressing its deepfelt appreciation for his wise guidance of them that made possible this noble monument in perpetuation of the memory of the Class of 1934.



DRAMATIC CLUB

This is Station D. D. C., folks, broadcasting from the B. M. C. D. studio. We are about to present to you a general review of our activities this year.

In September, Dorothy M. Hopwood was elected president; Berthe Castonguay, vice president; Dorothea Prairie, secretary.

On December 15, three one-act plays were presented: "A Wedding", "The Drums of Oude", "The Old Lady Shows Her Medals".

In January, our club was admitted into the only national high school honor dramatic society, The National Thespians. Miss Barbara Wellington was named worthy advisor; Miss Elizabeth Leonard, an honorary member, and the five charter members, namely, Jack Brian, Berthe Castonguay, Dorothy M. Hopwood, Laurine MacDonald, and James Knight, were installed at a meeting held at the Woman's Union.

For the third year the club joined with the music department in producing a Gilbert and Sullivan opera—The Mikado. This was very artistic and satisfying.

Once more Durfee entered the Massachusetts Drama Day, winning high praise in Boston for "The Romanceers." This was followed by Novelty Nite—the annual vaudeville which uses talent of all kinds and fills the house better than any club activity.

The year 1934 has already made a name for itself in the club's annals with a mystery ride, a Hallowe'en poverty party, and a reunion of old timers to add to the many successful dramatic ventures.



THE DURFEE HILLTOP

This year marks the completion of twelve successive years of publication of the Durfee Hilltop. The paper has appeared weekly for thirty weeks out of every year. A greater number of students in the journalism class and an efficient staff permitted an accurate and more varied account of school news. The Hilltop also served as a valuable record of student activities.

An increase in the number of subscriptions was particularly notable of this year's publication. The subscription drive was carried on in the English classes instead of in the home rooms as was done previously. This and the greater enrollment in Journalism aided in the acquisition of a greater number of subscribers.

A successful effort was made to have the sophomore and freshmen classes represented more widely. Sophomore and freshmen interclass sports, activities of the Health Club, and other activities of lower classes were reported in successive issues of the Hilltop.

A variety of new columns which gave the sheet a brighter and more interesting aspect were in evidence. "Books," contributed by Miss Marion Kernan and the library aids; "Side Show," "Hear Ye," and "The Colyumister" are some of the new columns which appeared weekly.

This year the Hilltop operated under the following staff: Doris Colwell, Editor-in-Chief; Ralph Castonguay, Gertrude Bugara, Associate Editors; Dorothy Hanley, Business Manager; Marion Christensen, Virginia Kerrigan, Nada Lucas, Idella Nerenberg, Edna Reid, Carolyn Schneider, Assistant Business Managers; Joe Shea, Sports Editor; Helen Sharrocks, Circulation Manager; Laurine McDonald, Side Show Editor; Stanley Meretsky, Assistant; Audrey Bradbury, Artist; Mr. John T. Crowley, Faculty Advisor.



THE LIBRARY AIDS

The Durfee Library Aids is a body of students who have been chosen from the three upper classes for their scholastic standing. Miss Kernan, with the help and assistance of a committee of teachers, selects the officers of this organization annually.

The tasks of the aids are to distribute library passes in the morning, to collect and take the passes to the study halls each period, to keep the books arranged in an orderly way upon the shelves, to locate pupils absent from the library, to assist the students in finding material, to prepare new books for the shelves, and, on the whole, to keep the library in order.

Each year, to raise money and to buy new books, the Library Aids sponsor a bridge and whist party. This year's bridge and whist, held in May, was both a social and financial success, and as a result many new books have been added to the library.

The library aids, whom Miss Kernan has found an absolute necessity in carrying out her work are: Melvina Almond, Edna Baron, Lois H. Barton, Eunice G. Chappell, Margaret W. Cook, E. Jeannette Dearden, Malcolm H. Dearden, Margaret D. Dugan, Cynthia M. Dum, Eleanor M. Eddy, James D. Hanify, James F. Kenney, M. Virginia Kerrigan, Moira E. Kispert, James Knight, J. Howard Lightfoot, Nada Lukas, Robert Marr, Margaret C. McGuire, Albertine M. Mello, Kathryn E. Murphy, B. Gardner Reed, Philip Sacknoff, Frank B. Sandler, Isadore Schwartz, Marie Shaw, David Sternsher, Fannie Sudack, Arthur F. Sullivan, Daniel J. Sullivan, Joseph G. Taylor, James J. Vickers, Dorothy E. Wolstenholme.



THE COMMERCIAL CLUB

<i>President</i>	- - - - -	EARLE HINDLE
<i>Vice President</i>	- - - - -	PATRICIA BRINDLEY
<i>Secretary</i>	- - - - -	JENNIE SLINN
<i>Treasurer</i>	- - - - -	ALBERTINE MELLO

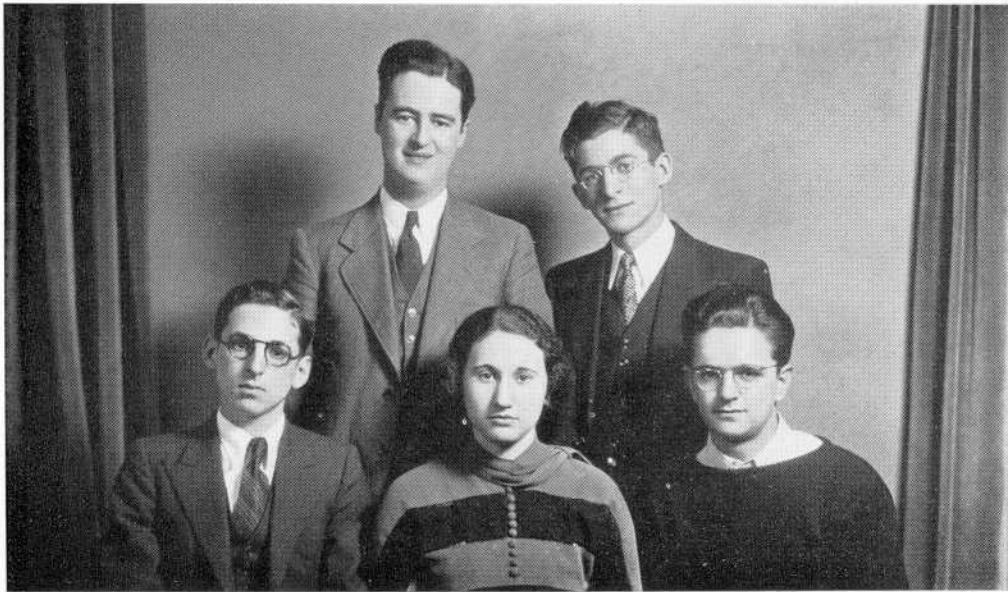
Under the capable leadership of Miss Isabelle E. O'Neil, its new faculty advisor, the Commercial Club organized in October, 1933.

Its first social event was a Thanksgiving party for the club members only.

The club sponsored a typewriting contest during the year, for which three cash prizes were given—a prize for Seniors, one for Juniors, and one for Sophomores.

For the latter part of the year, the Commercial Club planned an evening dance which friends of its members were invited to attend.

The aim of the club is to draw its members and teachers closer together, and to promote interest in the commercial subjects taught in the school. The Commercial Club feels it can look back on the year 1933-34 as one during which it has successfully accomplished these ends.



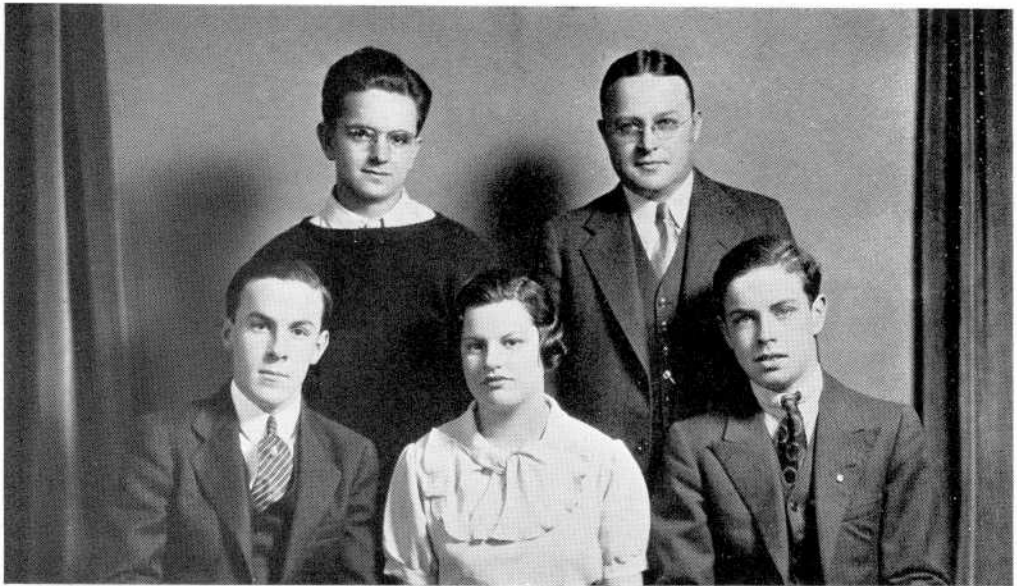
FORUM

<i>President</i>	- - - - -	HENRY USTROBINSKI
<i>Vice President</i>	- - - - -	PHILIP SACKNOFF
<i>Secretary</i>	- - - - -	MARION LAURANS
<i>Faculty Advisor</i>	- - - - -	MR. JOHN J. HARRINGTON

This year the Forum was presented with what has become known in these United States as a "New Deal." A new constitution was drawn up early in the year. Among the provisions of this constitution is a clause which makes the payment of semi-annual dues by each member compulsory. Meetings were held after school in Room 3, not, as had been previously the rule.

It will be noticed that all these changes tended to make the Forum an organization whose members were really interested in debating and public speaking. Ample proof of this is furnished by the secretary's reports which contain records of many interesting debates held during the year. Early in February plans were drawn up for a Prize Public Speaking Contest, open to members only. The contest, held later in the month was won by Clinton Walch, a member of the Senior Class.

This year, Mr. John J. Harrington was appointed as faculty advisor, due to the withdrawal of Mr. John T. Crowley, now faculty advisor of the Hilltop. He has proven to be a most capable and worthy successor.



DEBATING TEAM

Captain - - - - - - - - - - CLINTON WALCH

Coach - - - - - - - - - - MR. GEORGE CONNORS

The Debating Team has set up a record that will be remembered. It has been victorious over New Bedford and has completed the season undefeated. No small share of the credit for this accomplishment belongs to Mr. Connors, who, in his first year as coach, had to meet the task of assembling a team from a squad of which only one member had any previous debating experience. The results that Mr. Connors achieved reflect greatly upon his ability as coach.

Early in the year, Clinton Walch, a senior, was chosen captain. Although he had no previous debating experience, his ability as a public speaker was widely recognized. Three other speakers all members of the Junior Class—Henry Ustrobinski, John Harrington, and Barbara Maker, alternate, completed the team, which did all the debating. Preparedness and a forceful manner of delivery are the two factors which were evident in the team.



LITERARY CLUB

<i>President</i>	- - - - -	ANGUS BAILEY
<i>Vice President</i>	- - - - -	HYALIE YAMINS
<i>Secretary</i>	- - - - -	BARBARA MAKER

This year a Literary Club was formed to bring together pupils interested in the reading of good literature. Membership was gained through recommendation of English teachers and through competition. Its purpose is to develop the ability to write both prose and poetry and to build up a capacity for intelligent criticism.

Meetings are held every other week under the guidance of Mr. Ambrose Keeley a member of the faculty. At each meeting there are three contributors of original manuscripts and three student critics. Among the types of literature discussed and written are short stories, poetry, essays, exposition and description, and editorials.



HOME ROOM DIRECTORS

President - - - - - CLINTON WALCH

Vice President-Secretary - - - - - IRENE PREVOST

For the first time in this school the Home Room Directors formed an organization. Clinton Walch was elected president and Irene Prevost, vice president-secretary. Miss Mildred V. Carroll was appointed faculty advisor by Principal Charles V. Carroll.

The purpose of this organization is to better acquaint the pupils with the activities and requirements of the school. The Directors were elected by the pupils early in October. To be eligible it was necessary to have 70 per cent or over in all subjects. The Home Room Directors are responsible for checking absence and tardiness, reading the morning bulletin, aiding the social life of the school and other duties.



DURFEE DESIGN GUILD

<i>President</i>	- - - - -	ANITA BARBELLE
<i>Vice President</i>	- - - - -	ERMA DOMINGOES
<i>Secretary</i>	- - - - -	JENNIE MARKS
<i>Treasurer</i>	- - - - -	JOSEPH CAMARA
<i>Faculty Advisor</i>	- - - - -	F. ANTOINETTE PRATT

The Durfee Design Guild, which was organized with the purpose of carrying on extra curricular work in art and of rendering service of an artistic nature to the school, held its meetings every Thursday.

The social which they sponsored on February the second was a very great success. Talented students provided entertainment during intermission by giving a floor show.

Members of the club made posters for the Varsity Club Dance and The Mikado. Their NRA posters were exhibited during Art Week beginning April the eighth.

Dusky Moon, a minstrel show and dance, held May twenty-fourth at the Woman's Union proved to be very successful.

The club presented the following books to the school library, bought with money appropriated from their funds: "An Introduction to Art Education" by William G. Whitford, "The Enjoyment and Use of Color" by Walter Sargent, and "The Art in American Life" by Frederick P. Keeple and R. F. Duffus.



THE ELECTRICAL CLUB

<i>President</i>	- - - - -	ROY BOLDUC
<i>Vice President</i>	- - - - -	LIONEL PELISSIER
<i>Secretary</i>	- - - - -	WILLIAM HAMEL
<i>Treasurer</i>	- - - - -	RAOUL DUQUETTE

The Electrical Club was formed about fourteen years ago and was one of the first organizations to provide extra activity work after school hours for students in the Technical course. The club was formed primarily to teach and guide students in the knowledge of radio. At that time students were keenly interested in becoming radio operators of code stations; the radio as a means of entertainment was at that time only talked about as something for the future.

The purpose of the club is to take up and to carry on in the electrical field, such experiments and research work which is found impossible during school hours because of a lack of sufficient time. At numerous meetings, men prominent in the electrical industry give interesting lectures on various phases of the electrical world and allow the students to make contacts which are often beneficial in securing a position later. Carefully planned visits to electrical and industrial plants give the student a practical demonstration of the theory which he studies during school hours.

Under the faculty direction of Mr. Henry J. Shea and Mr. Myron T. Ashley, the club has been very successful, and this year under the guidance of Roy Boldue and his fellow officers it has enjoyed a most prosperous year.



TRAFFIC SQUAD

<i>Captain</i>	- - - - -	LOUIS FIORE
<i>First Lieutenant</i>	- - - - -	ROGER BERUBE
<i>First Lieutenant</i>	- - - - -	JAMES THORPE
<i>First Lieutenant</i>	- - - - -	MANUEL REZENDEZ
<i>Faculty Advisor</i>	- - - - -	MISS E. ESTELLE MILES

During the past year the Traffic Squad has inaugurated the system by which Rock Street, from Cherry to Locust, was closed to motor vehicles for a period of five minutes at the passing of each class. This year's squad was augmented both in number and in the percentage of the pupils who regarded the traffic rules.

A new system has been put into operation for regulating traffic bringing into use the new walks across the Durfee campus. The one way system of last year has been rigidly enforced.



THE DURFEE ORCHESTRAL CLUB

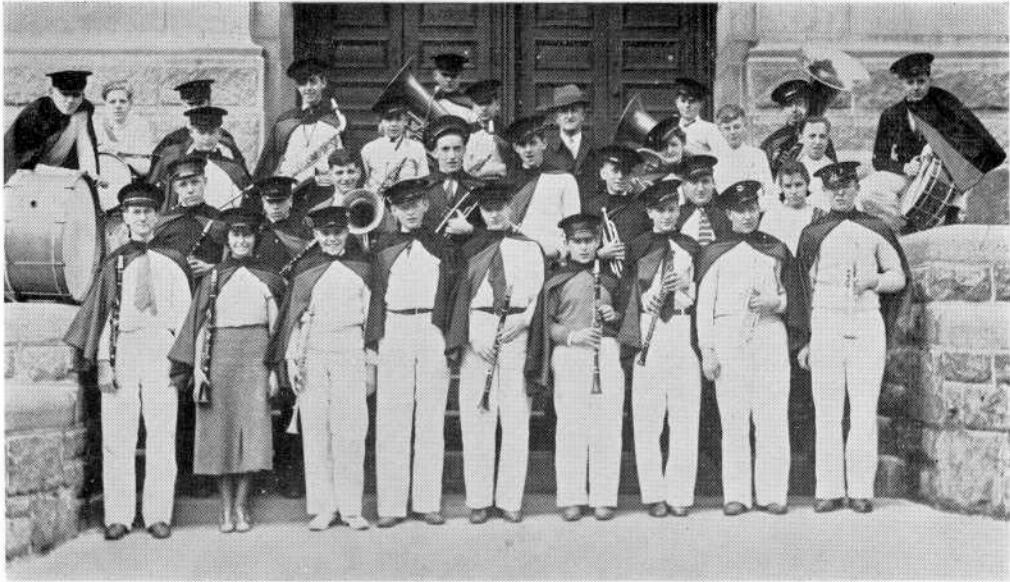
<i>Concert Master</i>	- - - - -	BERNARD CHEBOT
<i>Business Manager</i>	- - - - -	ELMER B. DURFEE
<i>Instructor and Director</i>	- - - - -	MISS HELEN L. LADD

The Durfee Orchestral Club again had a most successful year under the direction of Miss Ladd, whose skillful and untiring leadership has inspired her charges to do great things in the field of music.

The first appearance of the orchestra was at the convention of the Bristol County Teachers' Association held at the Durfee Theatre in October. Next it furnished music for the Dramatic Club's presentation of three one-act plays in December. Two months later, it accompanied the chorus in the production of Gilbert and Sullivan's colorful light opera, "The Mikado."

A twelve-piece ensemble, selected by Miss Ladd, motored to Boston in April, providing music for the state drama contest at the Emerson College of Oratory. The same ensemble played for the Fall River Teachers' Association banquet at Temple Hall, and for the Durfee Honor Students' assembly.

In May came the climax of the club's activities when the annual joint concert of the Orchestra and Chorus was given. The well interpreted orchestral and choral numbers were appreciately received as were the piano, violin, and vocal selections rendered by Frank Porter, Bernard Chebot and John Watkinson, respectively.



THE DURFEE BAND

<i>Student Conductor</i>	- - - - -	ELMER B. DURFEE, JR.
<i>Business Manager</i>	- - - - -	NORMAN CHARLAND
<i>Secretary</i>	- - - - -	BERNARD CHEBOT
<i>Instructor and Director</i>	- - -	MR. WILLIAM ALLINSON

Under the expert guidance of Mr. Allinson, the Durfee High School Military Band has become one of the school's best known organizations.

Last fall it played, as usual, at all the football games, where its attire of crimson and black capes, contrasted with white sweaters and trousers created a colorful impression. Between the halves of the annual New Bedford-Durfee game, held on Thanksgiving Day, the entire band went through manoeuvres on the gridiron.

On November the eleventh, the band marched in an Armistice Day parade. In the same month, it also provided music for the gigantic NRA parade and for a parade sponsored by the Fall River Grocers' Association. In addition, music was furnished for rallies, and sophomore assemblies, as well as for various other functions.

During the year, this organization has, through its fine musicianship and willing cooperation, thus proved itself invaluable to the school.

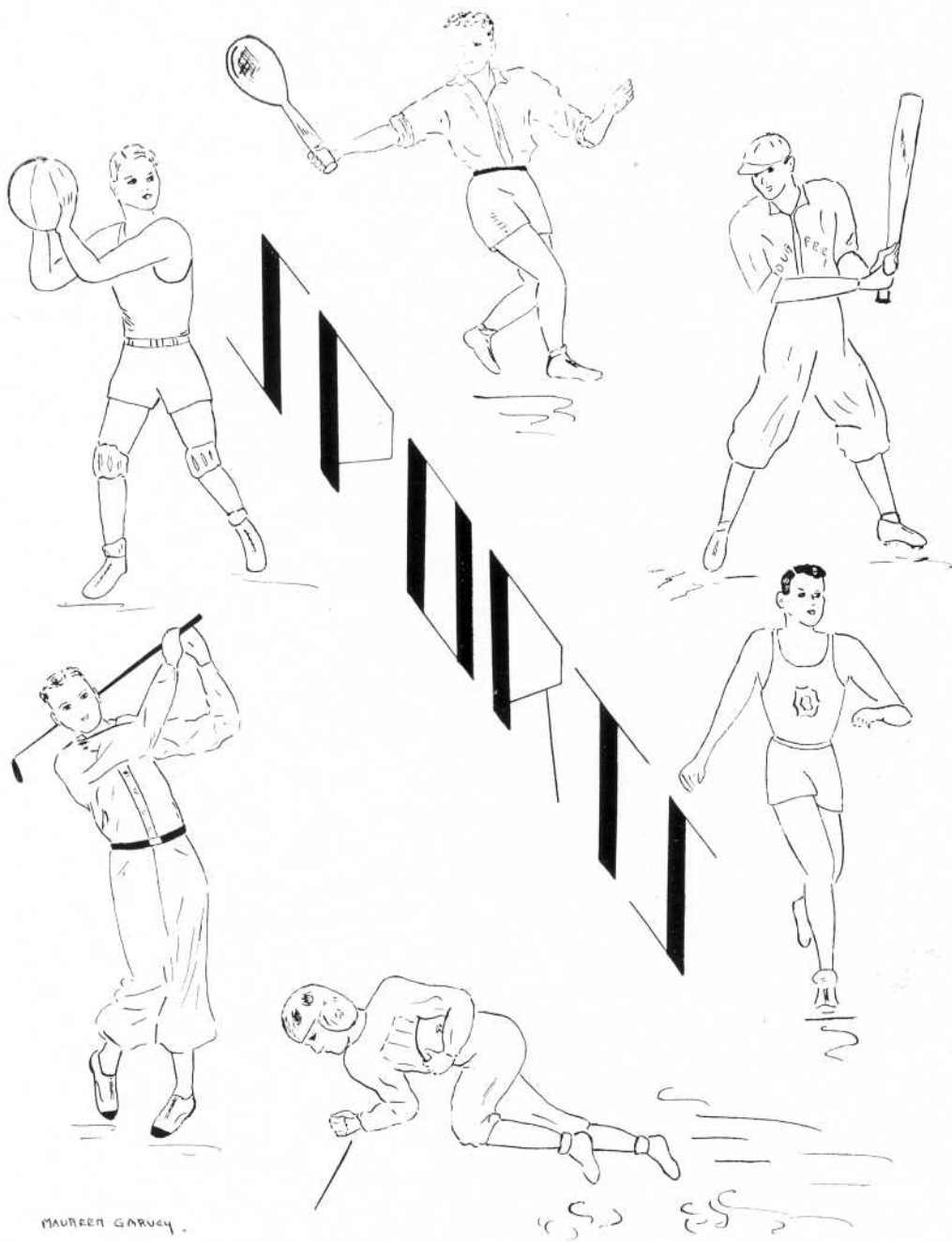
THE DURFEE CHORUS

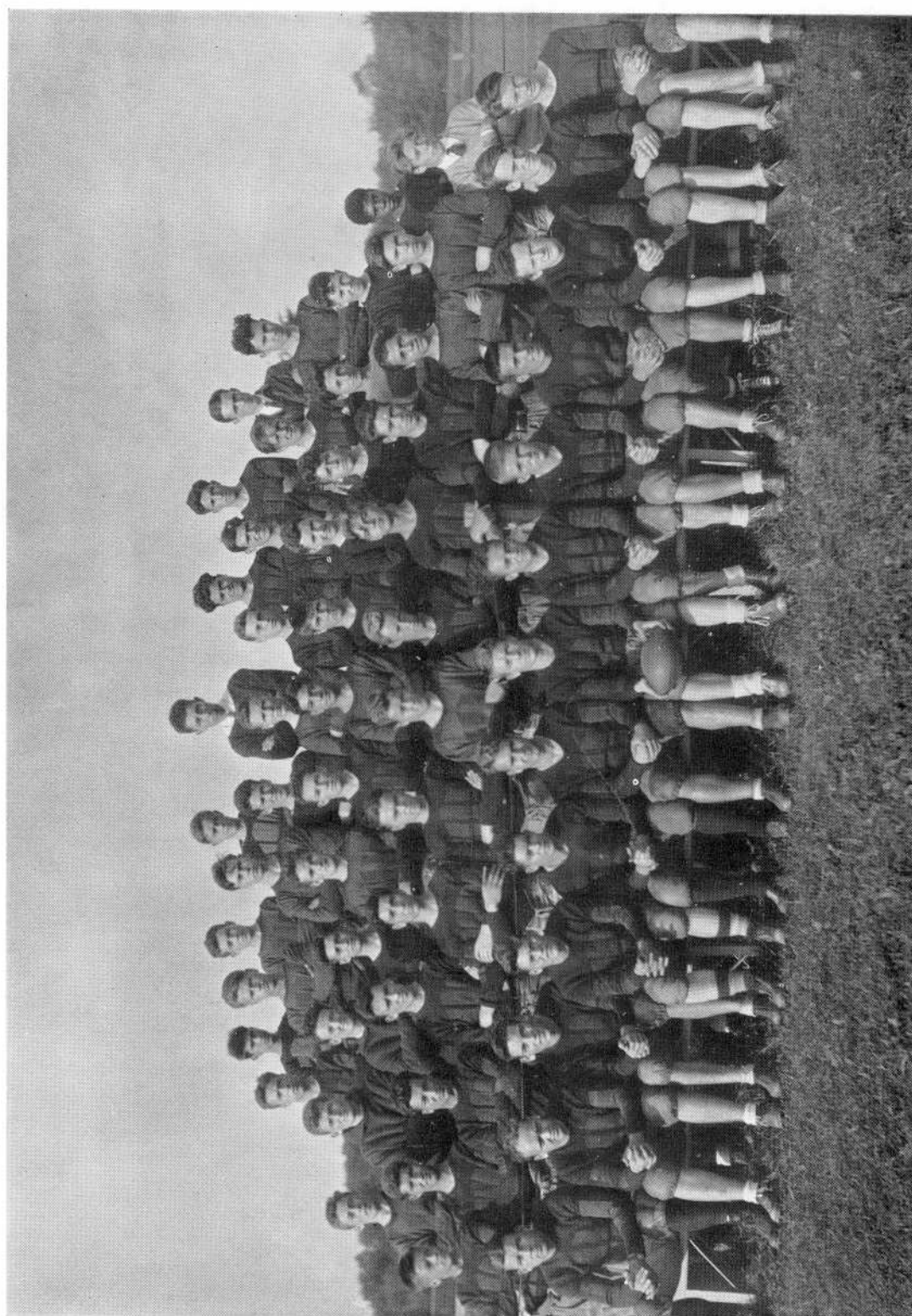
During the past year, the Chorus, under the capable direction of Miss Ladd, has been one of Durfee's most active organizations. It has been exceedingly successful in encouraging and furthering the interest of students in oral music. Early in the year, it elected Helena Sullivan as president and Yvette Valcourt as treasurer.

Several days before the Christmas vacation, the Chorus, clad in grey gowns and carrying lighted candles, walked through the corridors of both buildings, softly singing the traditional Christmas hymns. They were accompanied by a string quartet chosen from the Orchestra.

The principal event on the club's program was the presentation, with the assistance of the orchestra, of the light opera "The Mikado," in February. Both groups were directed by Miss Ladd, while Miss Wellington had charge of the dramatic phase. The leading roles were played by John Watkinson, Claire Harrington, Yvette Valcourt, Jack Kapitanoff, Helena Sullivan, Joseph Camara, Anthony Malone, Eleanor Cook. The first four of the group, with Frank Porter as accompanist, presented operatic selections at the Henry Lord Junior High School and at the Rotary Club.

At the annual concert in May, given in conjunction with the orchestra, the choral group was enthusiastically received. The final appearance of the Chorus was at Founder's Day, completing another interesting and useful year in the service of Durfee.





FOOTBALL

The 1933 B. M. C. Durfee High school football team enjoyed a mediocre season, winning four, losing four and tying one game.

The team was victorious over Fairhaven, Attleboro, Coyle and De La Salle, but was defeated by Taunton, North Attleboro, New Bedford Vocational and New Bedford High Schools. The lone tie came in the season's opener against East Providence at Alumni Field.

De La Salle replaced Barnstable on the schedule, while Coyle and East Providence were played for the first time by Durfee on the gridiron. A tenth game with the Country Day team of East Providence was cancelled because of a snow covered playing field.

The major game, of course, was the clash on Thanksgiving Day at New Bedford against the Whaling City's High School team. A fighting Durfee team held a heavier and more experienced Crimson team for half the game but weakened during the last part of the contest and was defeated 19-0.

The following members of the team are Seniors:—Captain Charles Sutcliffe, Milton Bor, Armand Chabot, Russell Reed, Henry Lord, Joseph Whitfield, Albert Allen, James Padden, William Savicki, Roy Boldue and Henry Conroy.



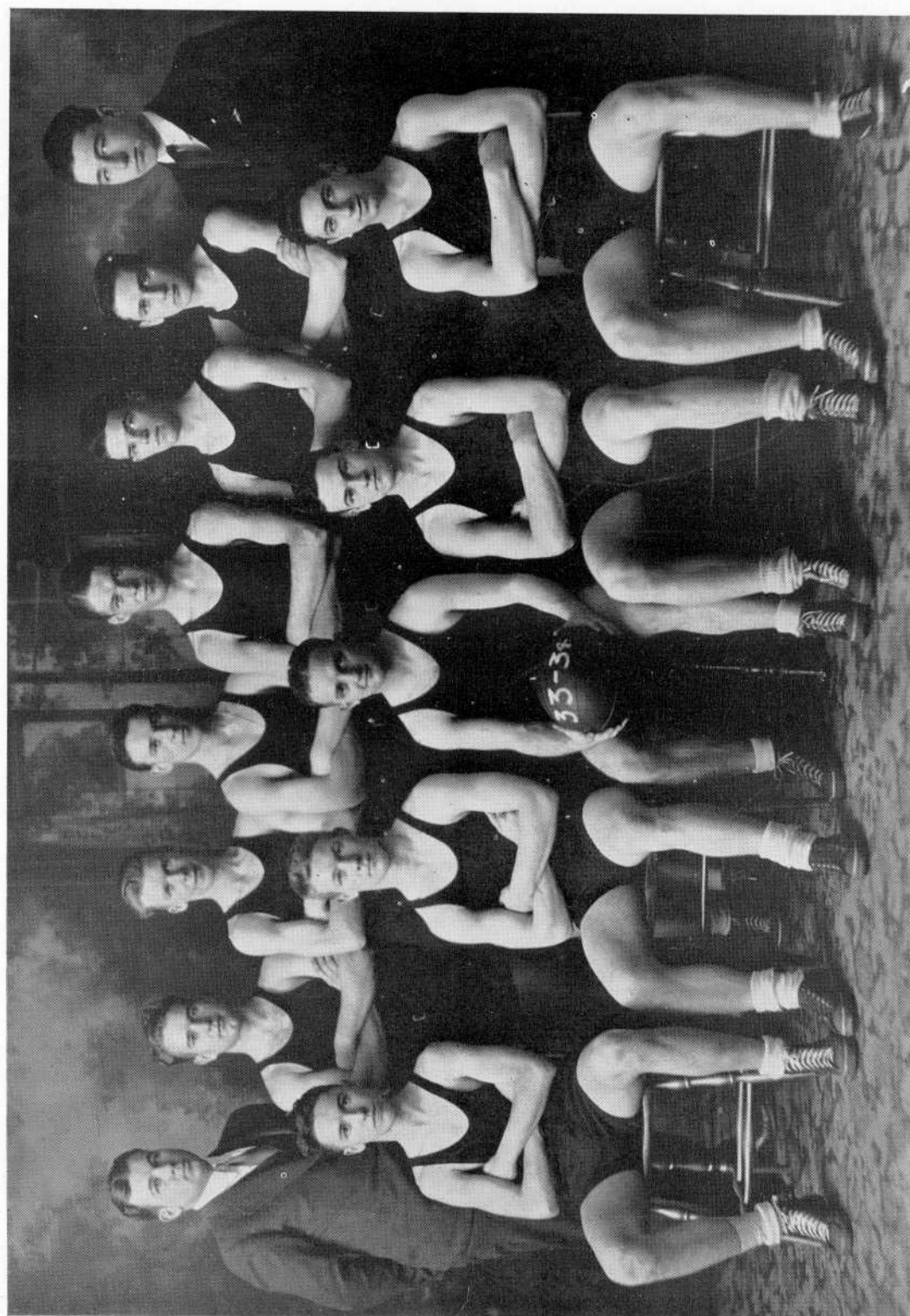
BASEBALL

Durfee's Baseball team enjoyed a successful season, due mainly to the fact that Coach Leslie Orcutt had several members of last year's team to use as a foundation for this year's team.

In addition to Captain Ernest Hodgson, there were the following Seniors:—Charles Sutcliffe, Russell Morin, James Padden, Jerry Connor, Ray Harrison, Milton Bor, Carlton Greenhalgh, Louis Fiore, John Kelly, Allan Bodge, Clinton Walch and James Padden.

A student committee roused the pupils to the support of the team and to the purchase of season tickets. Baseball at Durfee was supported entirely by the sale of these tickets which enabled the purchasers to witness all home games on the schedule.

Games were played on a home and home basis with teams representing Fairhaven, New Bedford, Taunton, Brockton, Holy Family, and New Bedford Vocational, while single games were played on April 19 with East Providence, and on May 30 with Providence Central.



BASKETBALL

With Milton Bor as captain and Mr. Stephen Nawrocki as coach, Durfee's 1933-34 team played fifteen games, winning nine and losing six.

In addition to Captain Bor, Fred Zebrasky, Ernest Hodgson, Albert Schwartz, Charles Sutcliffe, Daniel Sullivan, Russell Morin, Armand Chabot and John Dzidusko, all lettermen, are the members of the Senior class on the team.

The schedule and each game's result follow:

Durfee	34	West Warwick	24
Durfee	34	Alumni	23
Durfee	19	East Prov.	25
Durfee	29	East Prov.	24
Durfee	28	Taunton	19
Durfee	22	Attleboro	24
Durfee	49	Holy Family	29
Durfee	18	New Bedford	39
Durfee	11	Fairhaven	10
Durfee	35	Taunton	13
Durfee	43	Attleboro	17
Durfee	36	Vocational	43
Durfee	27	Fairhaven	25
Durfee	12	New Bedford	33
Durfee	32	Vocational	28

Varsity Club

This club, composed only of lettermen, after having acquired some ten new members from the basketball squad, has a total membership of about forty members.

Under its auspices, a dance was held in the Tech gym which was a financial and social success. During the football season, the club published a booklet which was sold at the Fairhaven-Durfee game and which helped to swell the assets of the club.

Later, a football banquet was held at the Barn, with Mr. Kearney from Rhode Island State College as the guest of honor. At the end of March, the club sponsored an athletic exhibition which was held in the Tech auditorium. It was a series of wrestling and boxing bouts in which members of the club took part. The feature bout was between Al Ventres, the middle-weight champion of the world and our own "Butch" Sutcliffe.

The officers elected this year are: Armand Chabot, president; Russell Morin, vice president; Gilbert Silver, Secretary. Mr. Stephen Nawrocki is the faculty advisor.

GOLF

This year Durfee has a golf team of which any school would feel proud. It has defeated thus far New Bedford and Fairhaven, and the players have scored more individual points than their opponents.

This is the second year for golf at Durfee. All home games were played this season at the Fall River Country Club. The Seniors on the team are: George Connors, Clifford Robinson, and Charles Taylor.

Considering that the players had no real training previous to this season, Coach Smith feels that they have made a wonderful record to date.

TRACK

Durfee High began its track season with fair prospects. One veteran, A. Stevenson, returned to the team. The coach, Mr. Andrew L. Duffy, set about choosing new material for the remaining positions. These runners have indeed proved themselves worthy of the distinction which their predecessors have given to this sport.

At the time of our going to press, the interclass meet, Durfee-New Bedford and Durfee-Vocational meets had taken place. The Seniors won in the interclass meet and defeated New Bedford, while losing to Vocational.

TENNIS

The prospects for this year's tennis team were fair. Two lettermen returned to the squad. They were Isidore Schwartz and Gilbert Silver. The remaining positions were filled by new material. This year's team strove to surpass last year's record.

In a tournament conducted in the fall for selecting the outstanding tennis players of the school, Isidore Schwartz won the tournament only after overcoming the stiff opposition of Raymond Pogubila, Frances Fitzpatrick and Raymond Pogubila attained high scores in this tournament.



CAN U IMAGINE

Isadore Prebluda as a butler.
 Jimmie Vickers cutting class.
 Jack Brian on time.
 Tom Devine without red hair.
 Jim Clarkin without Yvette.
 Joe Daley without a wave.
 Frank Halligan married.
 James Hanify acting like Charles Zalkind, or vice versa.
 Peg Eales without a wisecrack.
 Helene Prevost without those "rare" jokes.
 Barbara Minkin without those wistful looks.
 Marion Laurens without her "atmosphere".
 Clinton Walch without his pal Habula Habula.
 Ed Neves without his horse laugh.
 Alan Manning without his magnetic personality.
 Ben Pimental quiet for a minute.
 Dan O'Connor not blushing.
 Joe Radovsky with a short hair-cut.
 Mickey Bor without Charlie, or Armand without Ernie.
 Ruth Cobb with her belongings safe and sound.
 Moira trying to look innocent while Alice tells her a good story.
 The Dramatic Club without "Dot" Hopwood.
 Vin Ferris really serious.
 Why the study hall mouse disappeared.

FAMILIAR STRAINS AT DURFEE

That's what John said—Alice.
 Where's Dan—Alberta.
 May I borrow your Hilltop—Chiselers.
 Work, work and more work—Seniors



HOW OLD ARE YOUR EYES?

23% of people under 20 years of age....
39% at 30....48% at 40....95% over 60....

HAVE DEFECTIVE EYES

These figures are derived from series of tests just concluded by science.

Eyes are abused by improper and inadequate lighting.

Choose lamps that give adequate light and so held to prevent the strain that impairs the sight of young and old.

FALL RIVER ELECTRIC LIGHT CO.

85 NORTH



MAIN ST.

Graduates

Thibodeau College can and will solve your educational problems of the future better, sooner, and more economically than any out-of-town school.

Credit toward the degree of Bachelor of Business Administration (B. B. A.) is granted by two Universities to graduates of Thibodeau College.

Enroll now, and enjoy the unprecedented opportunities of advancement afforded the graduates of a school of recognized prestige in the business school field.

THIBODEAU COLLEGE
INC.

130 South Main St. Fall River, Mass.

DIAMONDS - - WATCHES



FALL RIVER, MASS.

JEWELRY CLOCKS SILVERWARE

Granite Block Spa

SODA AND LIGHT LUNCH

A willing servant in every home for

Cooking
Water Heating
Room Heating
Ironing

House Heating
Clothes Drying
Incineration
Refrigeration

GAS SERVICE

FALL RIVER GAS WORKS CO.

General Office

155 North Main Street

HIGH SCHOOL NEWS

IS FEATURED IN

THE
HERALD NEWS

Fall River's Home Newspaper

Compliments of

Smith's Drug Store

THE MEDICINE SHOP

105 North Main Street
Opposite Public Library

Sam Hall's Music Store

105 Bank Street

Circulating Library Roth Violins
Gibson Mandolins Martin Guitars
Vega Banjos and Trumpets
Leedy Drums and Xylophones

Established 1919

Youth continues to choose..



Bachrach

This year, last year, and for sixty-five years previously, students with verve and imagination have chosen Bachrach and will, we hope, for time to come.

Bachrach

PHOTOGRAPHS OF DISTINCTION

56 North Main Street

Fall River

Tel. 4703



BRYANT *STRATTON* COLLEGE

of

BUSINESS ADMINISTRATION
and SECRETARIAL PRACTICE
(Co-educational)

PROVIDENCE, RHODE ISLAND

• 72nd Year •
Begins Sept. 4-10
Two-Year Degree Programs
Economical Shorter Courses

Summer Sessions open
June 25—July 9

Strong Placement Service . . . over 60% of 1933
graduates were located by January 1, 1934. Social
life . . . athletics . . . dormitories . . . Write for catalog



W. Seymour Gray

145 Second St.

Tel. 449

ALL MAKES OF PORTABLES
THE IDEAL GRADUATION GIFT

Compliments of

Woodward Studio

A. M. & H. J. Boudreau

PORTRAIT AND COMMERCIAL
PHOTOGRAPHERS

131 So. Main St.

Tel. 929

JOHN P. NOWELL, JR.

MILL STOCKS

INVESTMENT SECURITIES

Archer Building 38 Rock St.

THIS DUFEE RECORD

PRINTED BY

C. J. LEARY & SONS, Inc.

HUDNER BUILDING

FALL RIVER, MASSACHUSETTS

GRADE A MILK—CREAM

Plain and Chocolate Milk
Sold in Tech Cafeteria

—FROM—

CHAREST & SON
DAIRY

Office—564 King Philip St.

Dairy—529 Birch St.

TELEPHONE 500

All Milk Federal Tested Under
Laboratory Supervision

Fall River's Leading Sport Store

COMPLETE OUTFITTERS FOR ALL
DUFEE ATHLETIC TEAMS

Foster's Sport Shop

29 No. Main St.

Tel. 1612

Compliments of

The Jette Studio

PHOTOGRAPHERS

303 South Main Street

We thank you, Class of 1934, for your
patronage.

We wish you strength and courage in
the Battle of Life.

After Graduation

WHY NOT make recreation your vocation? Enjoy your work and give pleasure to others; be healthy and happy and teach others to be the same. Such is the life of a teacher of physical education.

SAVAGE SCHOOL

FOR PHYSICAL EDUCATION

Established 1890

An Exceptionally Strong Faculty

A Teacher Training School which prepares men and women to become teachers, directors, and supervisors of health and physical education in schools, colleges, playgrounds, clubs, private institutions and industrial organizations.

The curriculum of the three-year course includes practical instruction in all forms of athletics, gymnastics, games, dancing, swimming, dramatics, and the like; also the essential courses in education, psychology, anatomy, physiology, hygiene, and others, thoroughly covering the theory and practice of health and physical education.

Catalogue Upon Request

Employment bureau for students and graduates

Register Now For

Class Entering September 17, 1934

SAVAGE SCHOOL

308 West 59th St., New York City

Hutchinson's Art Shop

PICTURES, PICTURE FRAMING

ARTISTS' SUPPLIES

DIPLOMAS FRAMED

154 Second Street

BEST WISHES FROM
SPEEDWELL FARMS ICE CREAM

Lyndonville Creamery Association

Rear 141 Rock St. Tel. 3773

SUITS FOR GRADUATION

CLASS NECKTIES

Talbot & Son, Inc.

MEN'S AND BOYS' CLOTHING

Compliments of

Fall River Curtain Co.

Compliments of

Vive Society

Compliments of

Hilton's Bakery

268 So. Main St. Tel. 3210

**The
Nonpareil Confectionery**

ICE CREAM TEA ROOM
135 So. Main St. 1200 Pleasant St.

Compliments of

Tonkonogy & Adler, Inc.

REAL ESTATE AND INSURANCE
OF ALL KINDS

Compliments of

Gay's Art Galleries

Compliments of

John's Beauty Shoppe

Cor. Borden and Second Streets
Tel. 480

Compliments of

Eagle Restaurant

No. Main St. Fall River

Compliments of

Dr. Earle E. Hussey

Kane's Shoe Shop

12 North Main Street
Durfee Theatre Building
THE SMARTEST MEN'S SHOES
IN TOWN

Compliments of

**Mr. and Mrs.
James H. Packer**

Compliments of

Gagnon Press

261 Pleasant St. Tel. 3310

Compliments of

John Friar

107 Bedford St. Tel. 3550

Compliments of

Nobby Men's Shop

162 So. Main St. Tel. 4779

Compliments of

Leo Shoob

VIOLIN INSTRUCTOR
154 No. Main St. Tel. 1311

Compliments of

Hickey's Pharmacy

314 So. Main St.

