

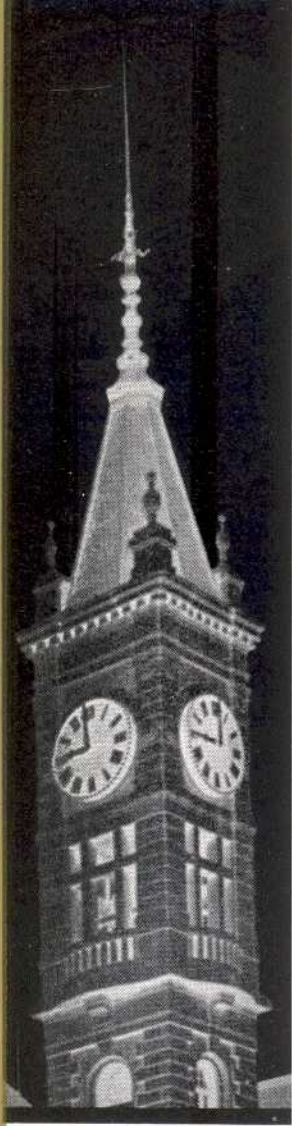
EX LIBRIS

Copyright by

LORRAINE H. ASHLEY, Editor-in-Chief

GENEVIEVE BOLDUC, Business Mgr.

HARRY P. LYNCH, Faculty Advisor



*Year book of B.M.C. Durfee High School
Fall River, Massachusetts*

THE 1936

RECORD

IN THIS VOLUME

THE RECORD IS PRESENTED

WITH AS COMPLETE A DEPARTURE

AS POSSIBLE FROM THE TYPE FACES

AND LAYOUTS OF PREVIOUS YEARS.

WE HAVE TRIED TO MAKE THIS EDITION

A VIVID AND ORIGINAL PORTRAYAL OF

STUDENT LIFE AS IT EXISTS TODAY AT

DURFEE HIGH SCHOOL.

F O R E W O R D

Seniors

Activities

Athletics

Advertisements

C O N T E N T S

TO YOU

HERBERT W. PICKUP

who through four memorable years have
inspired us by your friendship and
interest, we dedicate our book
that we may express our
deep appreciation and
sincere regard.

D E D I C A T I O N



A M E S S A G E . . .

To the Class of 1936:

The approach of the termination of your high school education is a time for serious consideration.

For many years the abundant love and numerous sacrifices of your parents and the wise counsel and excellent examples of your teachers have been the predominating influences of your lives. During this time when you have been progressing gradually from childhood to womanhood and manhood your home, school and church have been training you for citizenship. Are you ready for this great responsibility?

I am very eager to know if the lessons received by you in the class room, laboratories, shops, and clubs will make you citizens who will be able to think more clearly, to analyze more accurately your problems, to perform better your duties, to establish and adhere to good habits, to distinguish more clearly between right and wrong, and to aim at high ideals.

I sincerely hope that the education you have received in the B. M. C. Durfee High School will help to make and to keep you physically, morally, socially and intellectually fit to meet the numerous problems that will confront you throughout life. Our country, our commonwealth, and our city need men and women equipped with good training and sound character to meet the challenges of our times and the future. I hope that by living upright and courageous lives you will be able to meet successfully and happily these challenges.

Charles J. Cassall

Principal.

Principal

CHARLES V. CARROLL

Vice Principals

RALPH M. SMALL

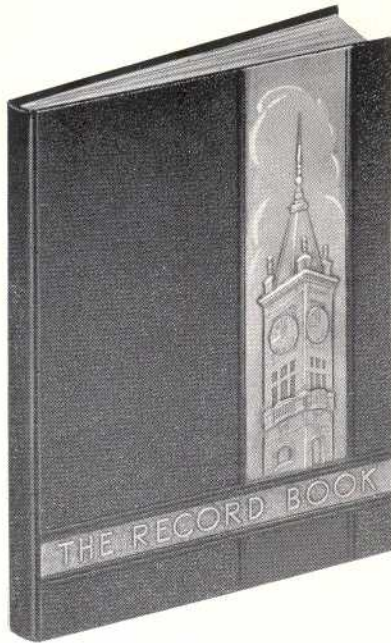
HERBERT W. PICKUP

Allard, Louis A.
Allen, Ralph C.
Andrus, Don F.
Ashley, Myron T.
Bent, Eugenie W.
Brightman, Ernest L.
Campbell, Emily B.
Carpenter, Mary L.
Carroll, Joseph O.
Carroll, Mildred V.
Carvalho, John A.
Chase, Winifred F.
Cleare, William M.
Coggeshall, Dexter E.
Cole, Lillian F.
Conlin, James F.
Connors, Mary B.
Cook, Berton E.
Coyle, George F.
Crowley, John T.
Dailey, Margaret G.
Davis, E. Christine
Delehanty, Edna U.
Dolan, Mary A.
Dow, Ruth N.
Downs, Edward B.
Duffy, Andrew L.
Earle, Charles C.
Evans, Mary P.
Fletcher, Ralph J.
Forster, Gladys G.

Foulkes, Carrie T.
Gottwald, Frederic J.
Harlow, Mabel
Harrington, Frederick J.
Harrington, John J.
Hathaway, Joseph R.
Hear, George C.
Jouett, Blanche I.
Judge, Mary E.
Keefe, Margaret F.
Keeley, Ambrose F.
Kernan, Marion E.
Lane, Frank D.
Langford, Alice G.
Laporte, Louise C.
Lautal, Olga A.
Lawlor, Joseph J.
Lee, Mary
Leonard, Elizabeth L.
Lomax, Katherine F.
Lord, John G. E.
Lowney, Margaret F.
Lynch, Harry P.
Macdonald, Margaret E.
Maronpot, Raymond P.
McCarthy, Mary F.
McCarty, Anna G.
McHale, Rose E.
Mello, Victor E.
Miles, E. Estelle
Mitchie, George A.

Nawrocki, Stephen
Newkirk, Ruth W.
O'Connor, Margaret M.
O'Neil, Anne L.
O'Neil, Isabelle
Orcutt, Leslie W.
Pratt, F. Antoinette
Pritchard, Florence G.
Ramsay, Maybelle E.
Ryan, Mary E.
Salmond, Malcolm G.
Seagrave, Sylvia W.
Shea, Henry J.
Smith, Charles D.
Smolensky, Hilda I.
Spring, Mabel A.
Sullivan, Catherine R.
Sullivan, Daniel J.
Sullivan, Dorothy C.
Sullivan, Helena V.
Sullivan, Louis J.
Sullivan, Mary H.
Thompson, Marian R.
Torphy, Marion L.
Townsend, Ella L.
Townsend, John M.
Vosburgh, Ruby M.
Walsh, Anna F.
Wellington, Barbara
Williston, Amasa F.
Withrow, Helena H.

T H E F A C U L T Y



Editor-in-Chief

LORRAINE H. ASHLEY

Assistant Editors

ERNEST KENYON

MANUEL VINCENT

Business Manager

GENEVIEVE BOLDUC

Assistant Business Managers

SAMUEL GOURSE

EDITH WILLIS

Faculty Advisor

MR. HARRY P. LYNCH

T H E S T A F F

T H E R E C O R D B O O K

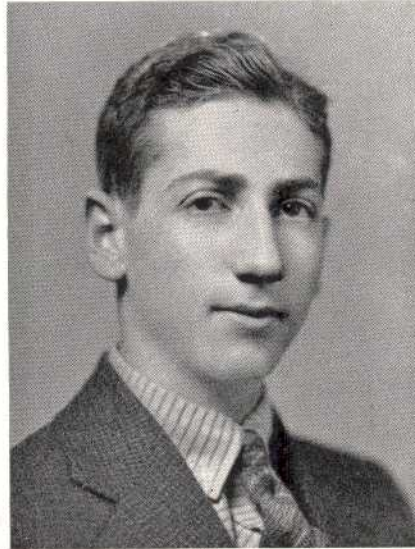
The aim of the editors of the 1936 Record Book has been to make this book as original in type and design, and as uniform as possible.

With the advice and counsel of our faculty advisor, Mr. Lynch, we believe that we have succeeded in our purpose and also in producing for you, the class of 1936, a book that you may well be proud of. We hope that in the years to come you will cherish it for the memories that it will bring to mind of your ever memorable high school career.

Other members of the staff are Marion Crossley, Irwin Rosenberg, Jeanne Letourneau, Hyalie Yamins, Jordan Fiore, Lily Ann Marks, Ethel Thomas, Henry Almond, Eleanor Cook, Anna Fiore, Harold Lichinsky, Leo Smith, Joseph Arruda, Leo Peloquin, James Fitzpatrick, and Frances Parlin.



President
GEORGE BOUNAKES



Vice President
DOROTHY LOIS REED



Secretary
ELIZABETH M. SHEA

CLASS OFFICERS

George Bounakes

Lorraine H. Ashley

Marion F. Crossley

Jordan D. Fione

Irwin Rosenberg

Louise Iadicola

Leo Smith

Riley Tokarz

Joseph M. Arruda

H A L L O F F A M E

JOSEPH AMBROSE WALLACE

OCTOBER 14, 1881

SEPTEMBER 13, 1935

*"His life was gentle, and the elements
So mix'd in him, that Nature might stand up
And say to all the world, 'This was a man!'"*

- 1913-1918 Head of the English Department, B. M. C. Durfee High School.
- 1918-1931 Vice Principal and Head of the English Department, B. M. C. Durfee High School.
- 1931-1935 Member of the Fall River Finance Commission.
- 1935 Vice Principal and Head of the English Department, B. M. C. Durfee High School.

Joseph Ambrose Wallace, a gentleman of singular distinction and scholarly attainments, sympathetic in his understanding of others, yet firm in his sense of justice and honor, brought to all his relationships of life a clear vision and a marked devotion to duty which remain an inspiration to all who knew him.



GERTRUDE MARY BAKER

B. M. C. DURFEE HIGH SCHOOL

1897

1929

Her helpful advice and kindly spirit endeared her
to the many students in whose memory she lives,
beloved.

WILLIAM A. MILLS '36

FRANCIS LEONARD '36



C. HENRY ALMOND

"Herkey"

Hilltop 3, 4—Sports Editor 4
Record Book Staff 4
Track 2, 3, 4
Electrical Club 2, 3, 4—Treas. 3
Dramatic Club 3, 4



ETHEL VIOLA ALMY

Home Room Director 2, 3, 4



FREDERICK ANDREW ALMY, JR.



BETTY ANDERSON

Advisory Board 4



LUCIANO P. ANDRADE

Home Room Director 3, 4
Commercial Club 2, 3, 4



GORDON ANDREW



WILLIAM ANDREWS, JR.

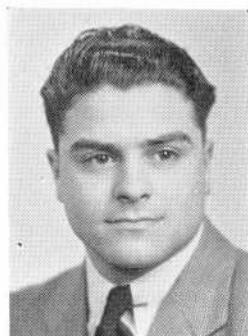


ATLA TERESA ARIEL

Commercial Club 3, 4
Gym Leader 4



JOSEPH ARRUDA



JOSEPH M. ARRUDA

Football 3
Baseball 3, 4—Capt. 4
Traffic Squad 2



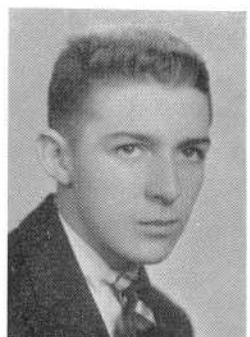
RUTH LOUISE ARTHUR

Gym Leader 3, 4
Basketball 4



LORRAINE H. ASHLEY

Editor of Record Book 4
Hilltop 3, 4—Asst. Editor 4
Health Club 2
Traffic Squad 2

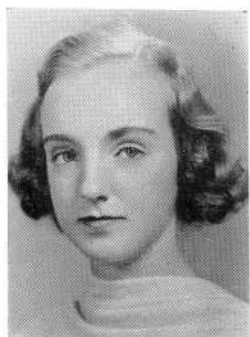


HARRY T. ASHWORTH



EMILY BARBIARZ

"Milly"
Commercial Club 3, 4



ELIZABETH L. BARKER

"Betty"
Dramatic Club 4

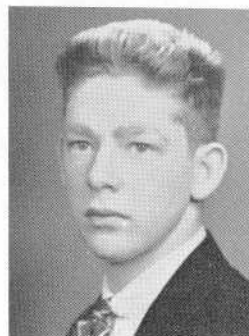


JANICE BARKER

"Jan"



ELLEN DOLORES BARLOW
"Helen" "Skippy"
Commercial Club 4



WILLIAM BARNES
"Bill"



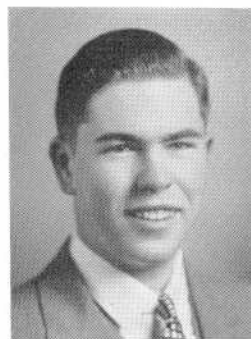
RUTH JANICE BEDRICK
"Ruthie"
Home Room Director 3



MAY BELAND
Commercial Club 4



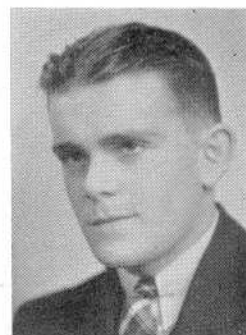
LAURETTA BELANGER
"Lottie"
Commercial Club 4



ARTHUR BENSON
"Art"



JOHN E. BENTLEY



ROBERT BERGNER
Track 2, 3, 4
Tennis 3, 4
Football 2
Orchestra 3



ALFRED BERNARD

"Al"

Home Room Director 3
Traffic Squad 3, 4



DOROTHY BERNARD

Commercial Club 2, 3, 4
Volleyball 3



IRENE BERNAT

MARY PHYLLIS BERTONCINI

"Bert"

Commercial Club 2, 3, 4
Gym Leader 3, 4
Girls' Numeral Club 4
Volleyball 3



ANNA BIELER

"Ann"

Commercial Club 3, 4



GORDON BISAILLON

"Chick"



AMELIA FRANCES BLAKE

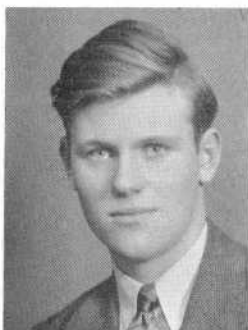
"Meel" "Blakey"

Commercial Club 2, 3, 4



GLADYS ELIZABETH BLAKE

Home Room Director 3



JAMES A. BLAKE, JR.
"Jim"



JAMES FRANCIS BLAKE
Football 4
Baseball 4
Golf 4



RITA T. BLAKE
"Reet"
Health Club 2
Commercial Club 2, 3, 4



JULIETTE M. BLANCHARD
"Judy"
Home Room Director 2
Volleyball 3, 4
Commercial Club 2, 3, 4
Gym Leader 3, 4
Girls' Numeral Club 4
Advisory Board 4



SAMUEL BLINN
Chorus 1



JOAN GREENWICH BLONDELL
"Kewpie"
Chorus 2, 3, 4
Dramatic Club 3, 4
Gym Leader 3, 4
Basketball 2, 4
Volleyball 3
Design Guild 3
Girls' Numeral Club 4



MADELINE BLOOD
"Mal"
Home Room Director 2



ROMAINE BLOSSOM
"Bloss"



EDWARD BOARDMAN
"Eddie"



DONALD A. BOGLE
Orchestra 2
Chorus 2
Band 2
Baseball Manager 4



BEATRICE JANICE BOLDUC
"Bee"
Dramatic Club 3, 4
Commercial Club 4



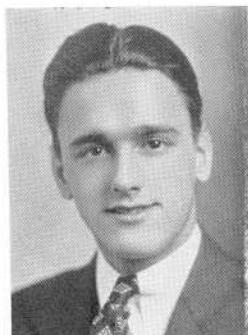
GENEVIEVE BOLDUC
"Billie"
Forum 4
Gym Leader 3, 4
Girls' Numeral Club 4—Sec'y
Bus. Mgr. Record Book 4
Volleyball 3, 4
Basketball 2, 4



IRENE BOLGER
Commercial Club 2, 3, 4



ELIZABETH S. BORDEN
"Beth"



ARTHUR BORGES



JOHN J. BORJE
Orchestra 2, 3, 4
Manager 4
Traffic Squad 2, 3
Chorus 4
Band 4



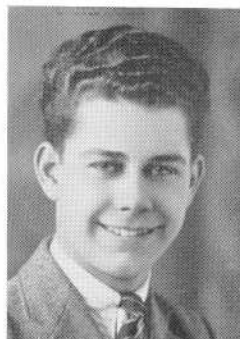
LLEWELLYN OTIS BOSCOMBE
"Lewis" "Louie"
Traffic Squad 2



ERNEST BOTELHO, JR.
"Bo" "Bottle"



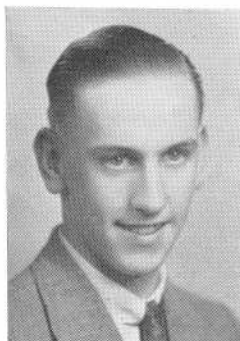
ROLAND BOUCHER



JOSEPH BOUDRIA



GEORGE BOUNAKES
Class President 2, 3, 4
Home Room Director 2
Dance Committee 4



HAROLD CLIFFORD BOWER
"Bud"



ESTELLE BOWERS
"Stelle"
Home Room Director 2
Advisory Board 4



DOROTHY WILLIAMSON BOYER
"Dottie"
Commercial Club 2, 3, 4
Home Room Director 3
Secretary of Christmas Seal Drive 3, 4



STEPHEN CALEB BRIGGS
"Steve"
Home Room Director 4



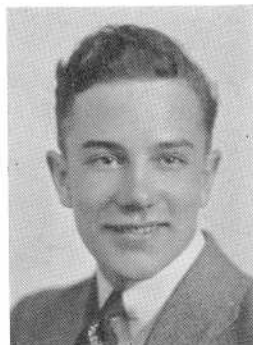
EDYTHER BRITLAND
"Edie"



ELMER G. BROADBENT
"El"



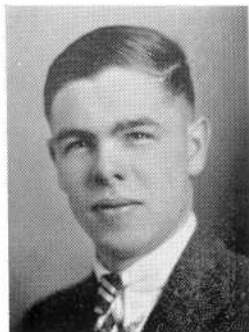
GEORGE J. BROUGH



CHARLES BROUGHTON



ROSE BROUILLARD
Commercial Club 2, 3, 4



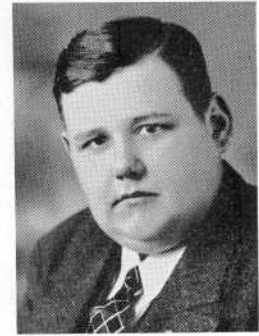
JAMES R. BROWN
Traffic Squad 4



CATHERINE ANNA BUCKO
"Kitty" "Kay"
Commercial Club 2, 3, 4



CATHERINE PATRICIA BURNS
Commercial Club 2, 3, 4



GEORGE FRANCIS BURNS

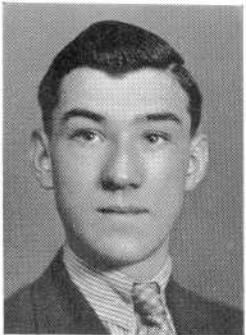


BESSIE EDITH BURSTEIN
"Beb"

Orchestra 1, 2, 3, 4
Chorus 2, 3, 4
Dramatic Club 4
Gym Leader 3, 4
Volleyball 2
Basketball 4



DELIA MARIE-LOUISE CABRAL
Commercial Club 2, 3, 4



EDWARD JOSEPH CALLAHAN
"Cal" "Ed"



WILLIAM CAMARA
Electrical Club 2, 3 4



MARJORIE LOUISE CAMPBELL
"Marjie"
Commercial Club 2, 3, 4
Home Room Director 2, 4



MARY C. CAMUSO
Commercial Club 3, 4



PAUL CANTELMO



IDA CANULLA

Commercial Club 2, 3, 4



MARY HELEN CAPETO

Health Club—Sec'y 2
Commercial Club 3, 4—Sec'y 4



LEO CARDIN

Football 2, 3, 4
Basketball 2, 3
Varsity Club 3, 4—Treas. 4



JOHN CARVALHO

Golf 3, 4



DOROTHY JOAN CASS

"Dot"
Commercial Club 3, 4



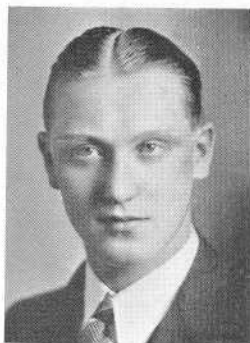
EDNA MAY CHAPMAN

Commercial Club 3, 4

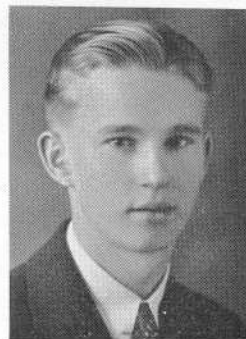


HELEN EDYTH CHARLTON

Commercial Club 3, 4
Design Guild 2



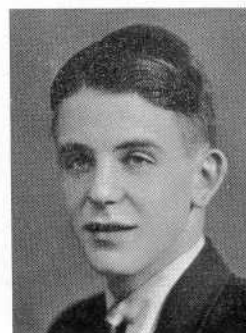
JOHN L. CIBA
"Johnny"
Traffic Squad 4
Home Room Director 3



FRED P. CICHON
"Freddie"
Traffic Squad 4



MARY V. CLARKE
"Mer"
Design Guild 4



WILLIAM P. CLARKE



MARY E. CLEAVES
Commercial Club 2, 3



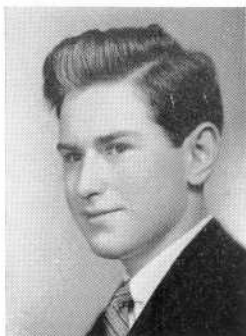
MARGARET T. CLIFFORD
Commercial Club 2, 3, 4



ROBERT H. CLORITE
Traffic Squad 2, 3, 4



A. LOUISE COBERY
Gym Leader 4



DEXTER ELTON COGGESHALL, JR.

"Elt"

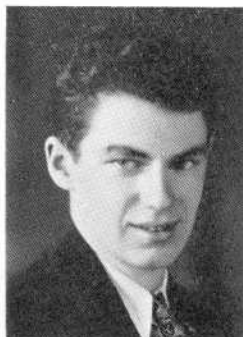
Home Room Director 4



LEOPOLD H. COLLARD

"Paul"

Football 4



RUSSELL COLLINS

"Rip"

Electrical Club 4



FRANCES AGNES CONNELLY

"Franny"

Commercial Club 1, 2, 3, 4

Girls' Numeral Club 4

Volleyball Team 3

Gym Leader 4



RUTH C. CONNOR



MARGARET VIRGINIA CONNORS

"Peggy"

Orchestra 2, 3, 4

Chorus 2



ELEANOR HARRIET COOK

"Cookie"

Chorus 2, 3, 4—Pres. 4

Orchestra 2, 3, 4

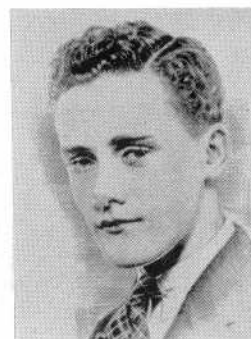
Band 2, 3, 4—Sec'y. 4

Dramatic Club 3, 4—Sec'y. 4

Literary Club 3, 4—Pres. 4

Library Aids 3, 4

Thespians 4



WALT W. COOLIDGE, JR.

Home Room Director 2



PEARL ALMA COOPER
Commercial Club 2, 3, 4



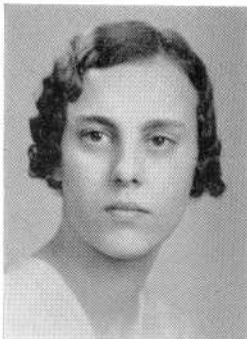
DORIS CLAIRE CORNELLIER
"Dot"
Commercial Club 2, 3, 4



EDNA MAY CORNER
Commercial Club 2, 3, 4
Home Room Director 3



MARY CORREA
Commercial Club 2, 3, 4



EMMA COSTA
Commercial Club 2, 3, 4
Traffic Squad 2



OLIVIA REGO COSTA
Commercial Club 3, 4



MARJORIE RUTH COTE
"Marjie"
Commercial Club 1, 2, 3, 4



PAUL A. COTE
"Cotie"



DOROTHY COTTELL

Commercial Club 2, 3, 4



ANTONE COUTO

"Tony"

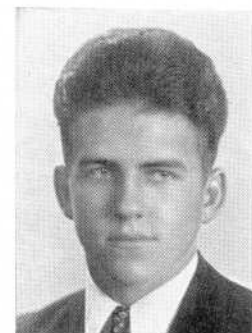
Commercial Club 4



GRACE CRAWFORD

"Gracie Allen"

Commercial Club 3, 4
Volleyball 3
Home Room Director 1, 2
Gym Leader 4
Chorus 2, 3, 4



WALTER V. CRAWLEY

"Walt"

Health Club 2
Baseball 3, 4



MARION FRANCES CROSSLEY

Secretary S. A. A. 2
Vice President S. A. A. 3
President S. A. A. 4
Dramatic Club 4
Gift Committee 4—Chairman
Record Book Staff 4



MARJORIE CHRISTINE CROSSLEY

"Marj"

Orchestra 2
Chorus 2
Health Club 2
Basketball 4
Girls' Numeral Club 4



AUGUST CURT

"Gus"

Traffic Squad 2, 3



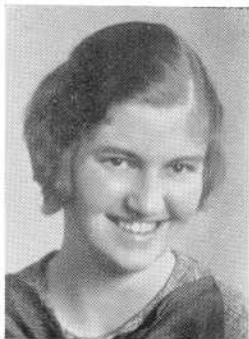
HAROLD CURTAIN



HENRY IRVING CUSHMAN
"Cush"



WILLIAM CZELUSNIAK
"Yitz"



FLORENCE W. DAMON
"Flip"
Girl Councillor S. A. A. 2, 3, 4



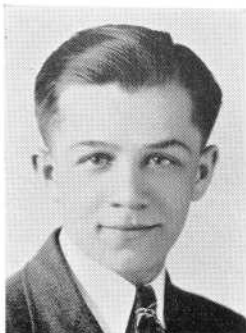
NATHAN DASHOFF
"Nate" "Irish"
Dramatic Club 3, 4
Thespians 4
Pin and Ring Com. 3
Dance Committee 4



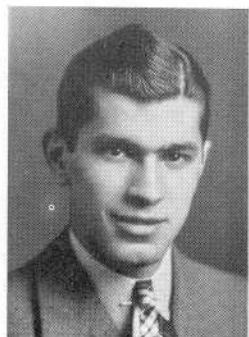
ELSIE ROBERTA DAVIDSON
Commercial Club 2, 3, 4



ALLEN DAVIS
Home Room Director 3
Band 3
Orchestra 3
Tennis Team 3, 4
Record Book Staff 4



GEORGE W. DEC
"Georgie Porgie"
Traffic Squad 4



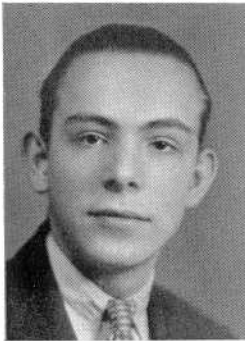
ARTHUR DeFARIA
"Mouse"
Football 2
Traffic Squad 2, 3
Home Room Director 4



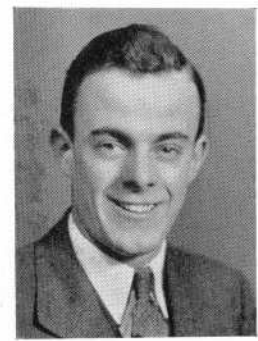
FRANCES CONCETTA DePAOLA
"Fran"
 Commercial Club 2, 3, 4



PHILOMENA DePAOLA
"Minnie"



ARTHUR J. DESPRES



LIONEL S. DESTREMPs
"Lewie"
 Commercial Club 3, 4



HORACE DiMARTINO



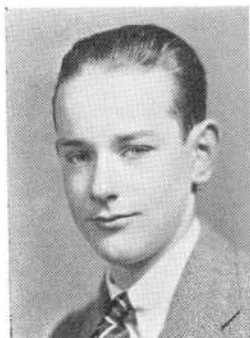
MATTHEW RICHARD DOBYNA
"Mickey"



RENE DOMINGUE
 Commercial Club 3, 4



RITA R. DONDIS



CORNELIUS DONOVAN

"Neil"

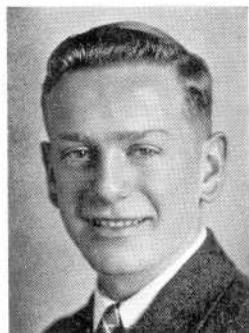
Health Club 2
Baseball 2, 3



MARGARET VIRGINIA DOORIS

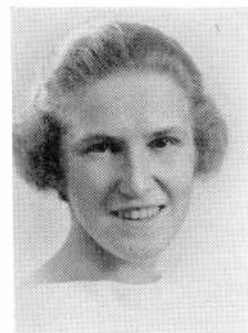
"Peg"

Commercial Club 2, 3, 4



CHARLES HENRY DRAKE

Commercial Club 2, 3
Health Club 2
Band 2, 3, 4
Student Leader 4



EUGENIA FRANCES DRZAL

"Jeanie"

Health Club 2
Home Room Director 2, 3
Commercial Club 2, 3, 4



ELSIE M. DUCKETT

"Boots" "Ducky"



THELMA DUGDALE



OWEN DUNN

ERNEST A. DURFEE

"Durf"

Electrical Club 2, 3, 4
Traffic Squad 2, 3, 4
Home Room Director 3





MURIEL E. DURFEE



ELEANOR DUSSAULT



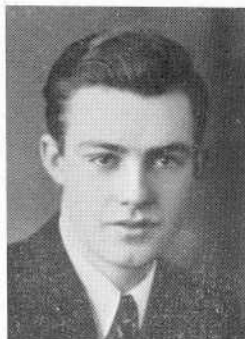
MARGUERITE DYER

"Marge" "Peg"
Commercial Club 2, 3, 4



EVELYN G. M. ECCLES

"Eve" "Eccy"
Design Guild 4



WILFRED JAMES ECKESLEY

"Ecky"



RUTH VIOLET EDDLESTON

Commercial Club 4
Chorus 4



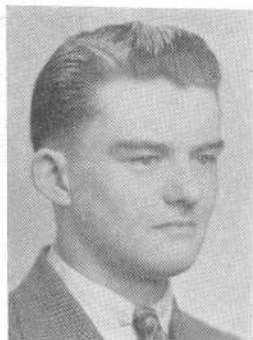
VICTORIA RUTH EISENBERG

"Vicki"
Orchestra 2, 3, 4
Chorus 2, 4
Forum 2, 3



MARGARET B. ELDON

Home Room Director 4
Commercial Club 4



EDWIN ENTWISTLE



SYDNEY EPSTEIN

Commercial Club 2, 3, 4



RUTH RITA FAGAN

Commercial Club 4



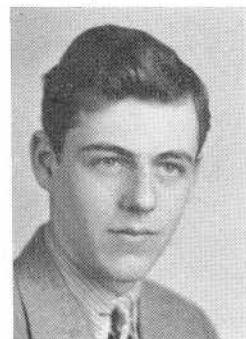
VIRGINIA FARIA

Commercial Club 2, 3, 4



CATHLEEN FARREN

Commercial Club 2, 3, 4



WILLIAM FERGUSON

Hilltop 3, 4—News Ed. 4



ANTONE G. FIDALGO

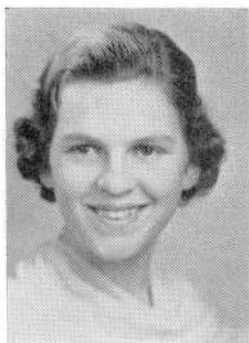
Electrical Club 3, 4



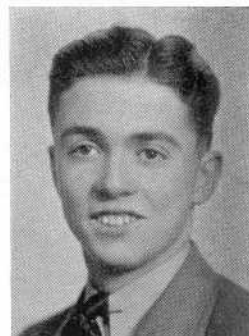
VIOLET CHRISTINA FIDDLER

"Chris" "Boots"

Dramatic Club 3



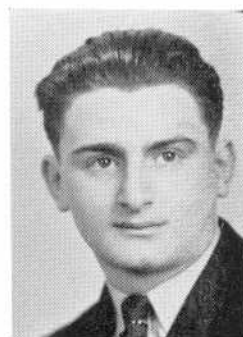
DORIS FIDLER
Commercial Club 3, 4



HECTOR THOMAS FINNERTY
"Speed"



ANNA G. FIORE
Home Room Director 1, 3, 4
Health Club 2
Orchestra 1, 2, 3, 4
Chorus 4
Dramatic Club 4
Record Book Staff 4



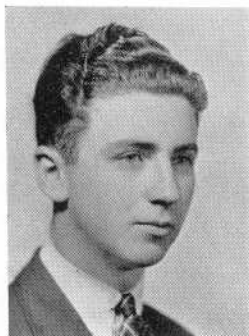
JORDAN D. FIORE
Home Room Director 4
Advisory Board 4
Forum 4
Dramatic Club 4
Record Book Staff 4
Hilltop Staff 3, 4—Ed. 4



DORIS F. FITZGERALD
"Dot" "Fitzie"
Chorus 2
Home Room Director 2
Volleyball 2
Basketball 2
Dramatic Club 4
Girls' Numeral Club 4



GLADYS FRANCES FITZGERALD
Commercial Club 2, 3, 4
Advisory Board 4
Home Room Director 2, 3



JAMES H. FITZPATRICK, JR.
Home Room Director 2
Health Club 2
Hilltop 4
Record Book Staff 4
Advisory Board 4



ELEANOR FITZSIMMONS
"Fitzzy"
Commercial Club 2, 3, 4



MARY FLANAGAN



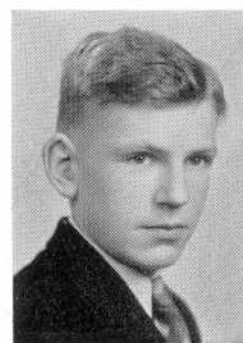
MARY LOUISE FLANNERY
Commercial Club 2, 3, 4



LEONARD FLORES

"Buzz"

Football 4
Varsity Club 4



JAMES HENRY FLYNN

Home Room Director 3
Electrical Club 2, 3, 4



GENEVIEVE FOLEY

Home Room Director 2
Orchestra 2, 3
Basketball 2
Dramatic Club 3, 4
Hilltop—Bus. Manager 4
Gift Committee 4

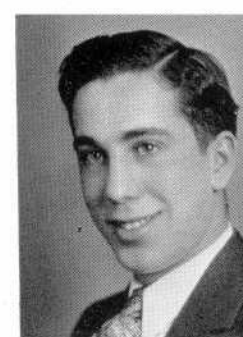


HELEN ANN FOLEY



IRVING S. FORMAN

"Irv" "Iwin"



ADELINO FRANCISCO



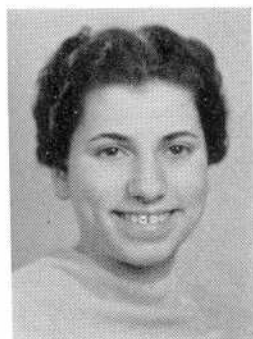
AGNES I. FRANCO

Volleyball 2, 3
Commercial Club 4
Numeral Club 4



LEONA MAY FRAZER

Commercial Club 2, 3, 4



MARY FURTADO

Commercial Club 3



CATHERINE MARIE FURZE



CHARLOTTE FURZE

"Charl"
Commercial 2, 3, 4



NORMAN GABOURY

Health Club 2
Commercial Club 4



JEANNE HENRIETTA GAGNE

Commercial Club 4



RITA CONSTANCE GAGNE

Basketball 2
Volleyball 2



CECILE GAGNON
"Ceil"



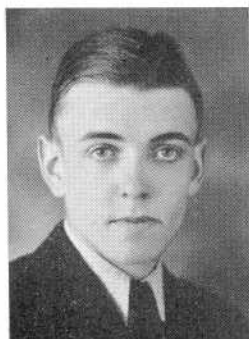
CLARA BLANCHE GAGNON
"Frenchy" "Mosquito"
Basketball 4
Volleyball 2
Commercial Club 2, 3, 4
Gym Leader 3, 4
Girls' Numeral Club 4



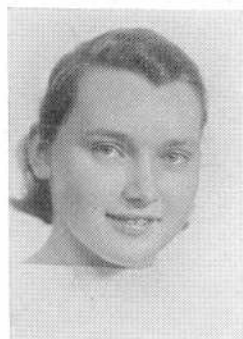
KATHERINE V. GAHERTY



ROMEO GAMACHE
"Romy"
Home Room Director 2
Band 2
Orchestra 2, 3, 4



GEORGE GARDINER



BERTHA GARDNER
"Bert"
Health Club 2
Home Room Director 3
Library Aids 3, 4
Commercial Club 3, 4



EVELYN GARSIDE
Commercial Club 2, 3, 4
Cheer Leader 3
Volleyball 2—Captain



MIREILLE CECILE GAUCHER
"Mira"
Home Room Director 2, 4
Dramatic Club 4
Literary Club 4
Thespians 4

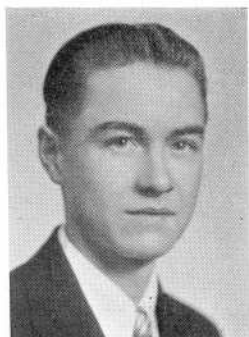


BERTHA GAUDREAU

Commercial Club 3, 4



JANE GIFFORD



JOSEPH L. GILL

HERMAN GITLIN

Home Room Director 2
Football 2
Forum 1, 4
Dramatic Club 3, 4
Literary Club 4
Gift Committee 4



JOSEPH GLOWACKI

"Zummie"

BLANCHE GORALNIK

Commercial Club 2, 3, 4



OMER GOULET

SAMUEL M. GOURSE

"Sam"

Design Guild 2, 3, 4—Pres. 4
Dramatic Club 4
Home Room Director 2, 4
Ass't. Bus. Mgr. Record
Book 4





FRANK GRAGNANI



ROBERT GRANDFIELD
"Bob"



SYLVIA GRANOFF



RITA VIRGINIA GRANT
Commercial Club 4



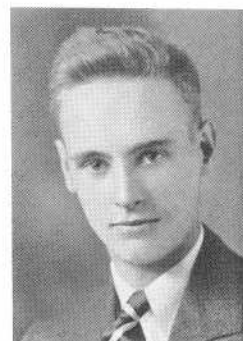
DOROTHY RUSSELL GRAY
"Dot"
Commercial Club 2, 3, 4



MARION GRAY
Orchestra 2, 3, 4



EVELYN MAY GREENBAUM
Orchestra 2, 3



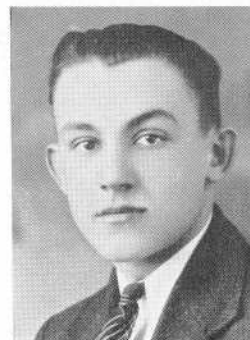
JOSEPH V. GREGORY
Basketball 3
Home Room Director 3
Health Club 2



CELIA GRINDLE

"Ce" "Ceal"

Home Room Director 2
Health Club 2



FRANK GROMADA



HERBERT CLYDE HALLIDAY

"Bert"

ELEANOR DORIS HAMPSON

"Iggy" "Dot"

Commercial Club 3, 4
Gym Leader 3, 4



HELEN HARNETT

Commercial Club 2, 3, 4

CYNTHIA HARRINGTON

Orchestra 2, 3, 4
Chorus 3, 4—Sec.-Treas. 4
Dramatic Club 3, 4
Pin and Ring Committee 3
Thespians 3, 4
Dance Committee 4



DANIEL HARRINGTON

"Dan"

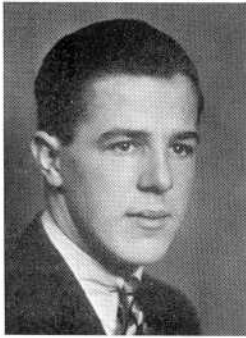
Home Room Director 2
Basketball 3
Traffic Squad 2
Dramatic Club 3

ELIZABETH MARIE HARRISON

"Betty"

Home Room Director 3
Hilltop Social Editor 4





NEIL A. HARTE



MARGARET HASPREY
"Peggy"
Commercial Club 2, 3, 4



MARGUERITE HAWORTH
"Peg"
Commercial Club 2, 3, 4
Volleyball 2



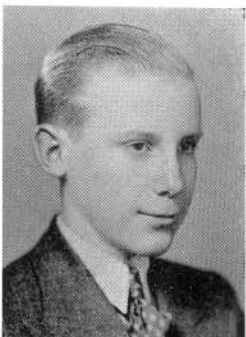
DOROTHY K. HAWTHORNE
"Dot"



MARY CLAIRE HAWTHORNE
"Claire" "Scotty"



ERNEST HAYDEN



WILLIAM F. HENRY, JR.
Home Room Director 1, 4
Hilltop Humor Editor 4



LEO HERCHUK
"Leo the Lion"



RITA HILL
Design Guild 4



EVELYN LOUISE HOAR
"Evy"
Commercial Club 4
Girls' Numeral Club 4
Volleyball 3
Gym Leader 3, 4



WILLIAM A. HOLDEN
"Bill"
Commercial Club 4
Cheer Leader 2



TILLIE HORVITZ
Home Room Director 4



MARIE JEANNE HOUDE
Commercial Club 3, 4
Library Aids 3, 4



THOMAS HOUGHTON
Electrical Club 3, 4



LLOYD HOWARD
Home Room Director 2



EDNA HART HUTCHINSON



EDWARD HURST

"Bud"

Literary Club 4



BEATRICE PEARL HYSLOP

"Bea"

Commercial Club 2, 3, 4

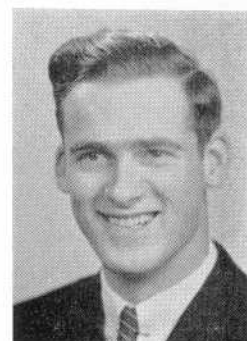


LOUISE MARION IADICOLA

Home Room Director 2

Health Club 2

Commercial Club 2, 3, 4—Pres. 4



HORACE INGALLS



HARRY INGHAM

Commercial Club 3, 4

Health Club 2



WILLIAM IRLA



JAMES ISHERWOOD

"Jimmie"



WILLIAM JAFFE

"Walt"

Home Room Director 2, 4
Dramatic Club 4



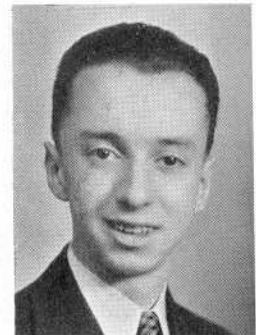
EDWARD JARVIS
"Eddie"



JANNETTE E. JARVIS
"Jean"
Commercial Club 2, 3, 4
Gym Leader 4



DORIS YVONNE JETTE



LOUIS P. JOLICOEUR
Commercial Club 3, 4



MARY ANGELA KANE
Health Club 2
Home Room Director 3, 4
Drum Major 4



JOHN KAPITAN
"Kap"



BELLA KAPLAN
Commercial Club 2, 3, 4



CAROLYN KATZ



EDITH E. KAY
"Penny" "Kay"
Commercial Club 2, 3, 4



JAMES KAYLOR
"Jimmy"



ELEANOR GERTRUDE KEEFE
"El"
Hilltop Circulation Manager 4



JOHN CHARLES KEEFE
"Johnny"
Home Room Director 2
Football 2
Advisory Board 4



CHARLES KELLY



DONALD KELLY
"Kel"



EDWARD KELLY
Band 2, 3, 4
Electrical Club 2, 3, 4



MARJORIE KELLY
"Kell" "Marge"
Design Guild 4



ERNEST KENYON

Health Club 2—Vice- Pres. 2
Home Room Director 3, 4
Councillor S. A. A. 2, 3
Ass't Editor Record Book 4



LUCILLE THERESA KIRBY

"Lucy"
Commercial Club 3



STEPHEN PAUL KITECK

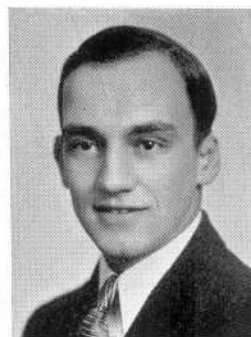
Home Room Director 2



RAYMOND KOBELECKI



JOHN KOSTEK



JOSEPH KOSTYK

"Little Joe"



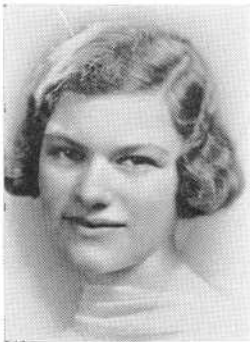
EMELIA KOT

Commercial Club 3, 4



EDWARD KOWALSKI

Dramatic Club 3, 4
Orchestra 2, 3, 4
Band 3



RUTH REBECCA KRAVIF
Home Room Director 1



STELLA KRAVITCH
Commercial Club 2



EILEEN FRANCES LaFOREST
Chorus 2
Commercial Club 3, 4



YOLANDE B. LaLIBERTE
Library Aids 3, 4
Commercial Club 4



ELIZABETH J. LAMOND
"Betty"
Home Room Director 3, 4
Dramatic Club 3
Commercial Club 4
Library Aids 4
Advisory Committee 4—Chairman



PAUL LANNEVILLE



DORIS LASH
Secretary of Class 2
Dramatic Club 3, 4
Health Club 2



BARBARA LATHROP
Dramatic Club 4



BEATRICE LAVOIE
"Juliette"
 Orchestra 3



BERNARD LAVOIE
"Barney"
 Home Room Director 4
 Commercial Club 2, 3, 4



GERTRUDE BOYLAN LEARY



RITA H. LEARY



SIDNEY SEYMOUR LECHAN
"Prof"
 Health Club 2
 Orchestra 4
 Chorus 4
 Home Room Director 3
 Advisory Board 4



ROBERT LeCLAIR



MARGARET LENAGHAN
 Health Club 2
 Commercial Club 2, 3, 4
 Home Room Director 4



CATHERINE LENARTOWICK



HAROLD LISCHINSKY

Health Club 2
Forum 1, 2, 3, 4
Dramatic Club 3, 4
Master of Revels 4
Record Book Staff 4
Debating Team 4
Literary Club 4



MARY LOUISE LENNON



JEANNE LETOURNEAU

"Jeannie"

Commercial Club 2, 3, 4
Home Room Director 3
Record Book Staff 4
Advisory Board 4



PAULINE ANN LEVESQUE

Commercial Club 4



THERESA ADRIENNE LEVESQUE

"Terry"

Commercial Club 4



IRMA PHYLLIS LEVISS

Dramatic Club 3, 4
Home Room Director 2, 3
Forum 2, 3



ADRIAN L'ITALIEN



JOSEPH LOS

"Baron"



RUTH LOTTO
Commercial Club 4



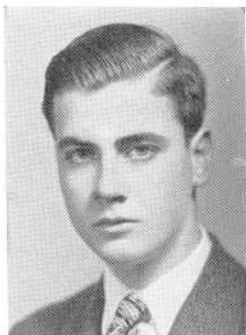
JEANETTE D. LOWDEN
"Jeanie"
Commercial Club 3, 4



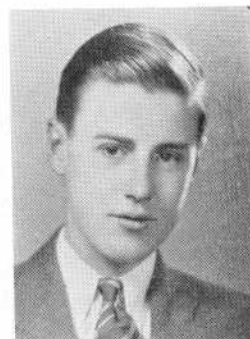
DANIEL F. LYNCH
Band 2, 3, 4
Orchestra 2
Chorus 2



ELEANOR LYNN
"Linnie"
Commercial Club 1, 2, 3



EDWARD P. LYONS
"Soxy"
Home Room Director 3
Baseball 3, 4



THOMAS LYONS
"Tom"
Home Room Director 4
Football Manager 4
Tennis 3, 4



EDITH R. MACHADO
Commercial Club 3, 4



THOMAS MacMURRAY
"Mac"
Home Room Director 1
Traffic Squad 2
Commercial Club 2, 4



GRAHAM P. MADDEN
"Pretzel"
 Traffic Squad 4



LOUIS MAGONI
 Traffic Squad 2
 Commercial Club 3, 4



STEPHANIE MAJOR
 Commercial Club 2, 3, 4



AGNES MALONE
"Kay"
 Commercial Club 2



PAUL THOMAS MALONE
"Doc"



H. ELTON MANCHESTER
 Home Room Director 2, 3
 Traffic Squad 2, 3, 4



MARTHA MANISHEFSKY
"Marty"
 Home Room Director 1, 2
 Traffic Squad 2, 3, 4
 Commercial Club 2, 3, 4
 Volleyball Team 2
 Basketball Team 2, 4
 Gym Leader 3, 4
 Girls' Numeral Club 4

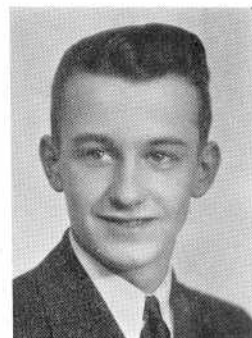


WILLIAM MANLEY
 Traffic Squad 2, 3, 4—2nd Lieut. 3
 Commercial Club 2, 3, 4



MURIEL M. MANNING

Chorus 3
Dramatic Club 4



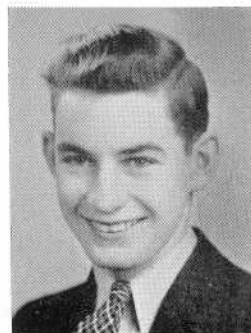
ROBERT MARCHAND

"Bob"



DORIS MARKLAND

Design Guild 4
Dramatic Club 4



STUART MARSH

"Beef"

Traffic Squad 2
Commercial Club 2, 3



MANUEL MARSHALL

"Manny"

Traffic Squad 2, 3, 4



CHARLES MARTIN

"Chuck" "Charlie"



VIRGINIA C. MARTIN

"Gin" "Connie"

Home Room Director 1, 2
Design Guild 1, 2, 3



VIRGINIA ANNE MASON

"Gin" "Ginny"

Health Club 2
Home Room Director 3, 4
Commercial Club 3, 4
Hilltop Staff 4



EDITH Y. MAURETTI

"Eda"

Commercial Club 2, 3, 4



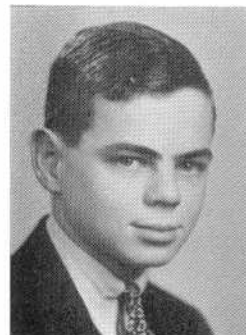
HELEN McANDREW

"Joe"



MARY LOUISE McCAULEY

Commercial Club 3, 4
Home Room Director 2
Hilltop Staff 4



JACK McCROSSAN

"The Chemist"



RITA LOUISE McDERMOTT

Commercial Club 2, 3, 4



MARGARET C. McGUIRE

Dramatic Club 3, 4
Library Aids 2, 3, 4
Literary Club 2, 3
Debating Team 2



MARGARET PATRICIA McGUIRE

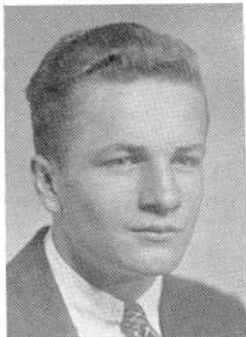
Commercial Club 2, 3, 4
Volleyball Team 2



CHARLOTTE EUNICE McLEOD

"Eunice"

Commercial Club 3



JAMES McMANUS



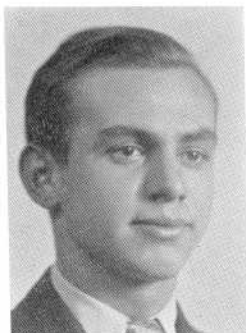
FLORENCE McMURRAY
"Mac"
Commercial Club 3



ANNA McPARTLAND
"Mac"



RUTH ANN McWATTERS
Forum 4
Home Room Director 2



PHILIP E. MEESON
"Flip"
Home Room Director 2, 3



ELIZABETH MARY MELIA
"Liddie"



ADELINE MELLO
Commercial Club 2, 3, 4
Gym Leader 3



RALPH MESSENGER
Health Club 2—President



ALTON IRVING MILLER
Wrestling 3



LLOYD MILLS
Home Room Director 1, 2
Electrical Club 2, 3, 4

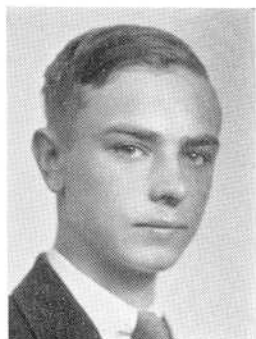


MARY ELIZABETH MITCHELL
"Murry"

Gym Leader 3, 4
Commercial Club 2, 3, 4
Girls' Numeral Club 4
Volleyball 4



ANTONIN MORIN
"Tony"
Commercial Club 2, 3, 4



GERARD R. MORIN
Commercial Club 2, 3, 4



HELEN ELIZABETH MORRIS
Volleyball 2
Home Room Director 4



RITA MORRISSETTE
Commercial Club 2, 3, 4
Gym Leader 3, 4



FLORENCE MARY MOSS
"Flossie" "Flo"
Home Room Director 3



HAZEL MARIE MULLEN

Commercial Club 2, 3, 4
Dramatic Club 3, 4
Design Guild 2, 3, 4
Home Room Director 2



CATHERINE C. MULLINS

Commercial Club 2, 4
Health Club 2



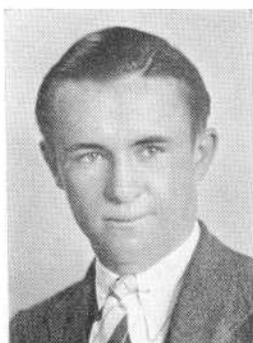
EDWARD F. MURPHY

"Ted" "Murph"

EDWARD T. MURPHY

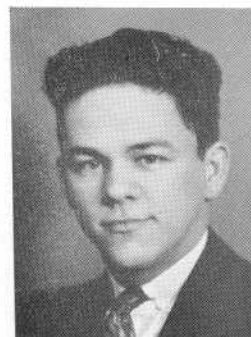
"E.T." "Ed"

Chorus 2, 3
Electrical Club 3, 4
Dramatic Club 3, 4
Basketball 2



FRANCIS BRADLEY MURPHY

FRANCIS JOSEPH MURPHY



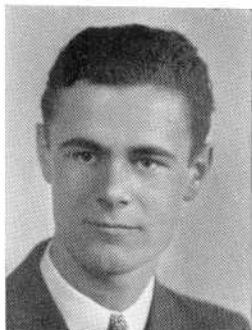
ANGELA C. NAGLE

"Ange"

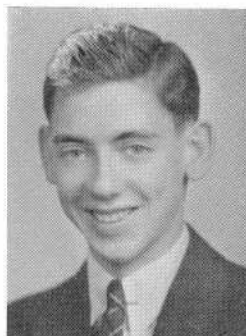
EVELYN ANN NAVIN

Cheer Leader 2, 4
Dramatic Club 3
Commercial Club 2, 3, 4
Volleyball 4
Gym Leader 3, 4
Girls' Numeral Club 4

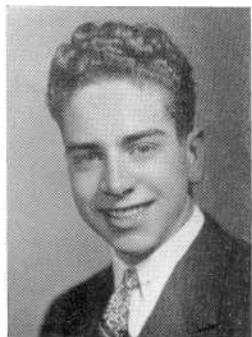




DONALD FRANCIS NEGUS



ROSWELL NEGUS



KENNETH SEDGWICK NELSON

"Ken"

Band 2
Home Room Director 2
Traffic Squad 2



GERTRUDE P. NERENBERG

"Gert"

Commercial Club 2, 3, 4
Dramatic Club 3
Home Room Director 2



EDWARD NESTOR

"Ted"



WALTER NEVES

Orchestra 2, 3, 4
Band 2, 3, 4
Commercial Club 4



FRANCES LOUISE NICKERSON

"Fran" "Nickie"

Commercial Club 3, 4



RITA SHIRLEY NURIN

Home Room Director 1
Commercial Club 2, 3, 4



JOHN HENRY O'BRIEN
"Johnnie"



CATHERINE LOUISE O'CONNOR
Home Room Director 2



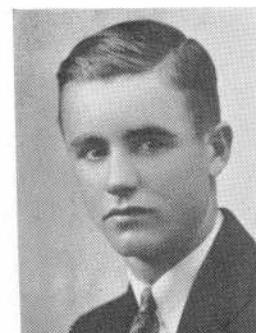
GLADYS O'DONNELL
"Glad"



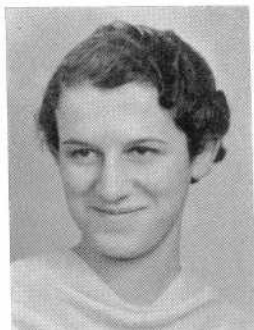
TIMOTHY EMMETT O'HAIRE
"Em" "Tim"



JAMES PAUL O'HEARN
"Jim"



WILLIAM O'HEARN
"Bill"
Commercial Club 4



MARGARET A. OLIVEIRA
"Peggy"
Commercial Club 2, 3, 4



ELEANOR T. O'NEIL
"Ev"
Commercial Club 2, 3, 4



ELIZABETH G. O'NEIL

"Betty"

Commercial Club 2, 3, 4



FRANCES ORZECOWSKI

"Fran"

Basketball 2
Volleyball 3, 4
Health Club 2
Commercial Club 3, 4
Girls' Numeral Club 4
Cheer Leader 4



NORMAN OUELLETTE

Tennis 3, 4



FRANCES OZASKA

Commercial Club 3, 4



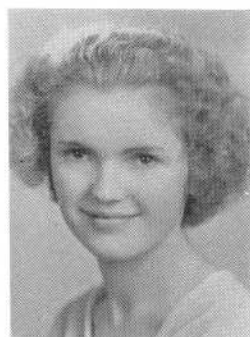
MANUEL F. PACHECO

Commercial Club 3, 4
Home Room Director 2



ALICIA PAQUET

"Porky"



GERTRUDE PARADIS

"Gert"

Hilltop—Associate Editor 4



DORIS PARISEE



CLINTON PARKER
"Clint"



BARBARA PARKMAN
"Bobbe"
Commercial Club 3, 4



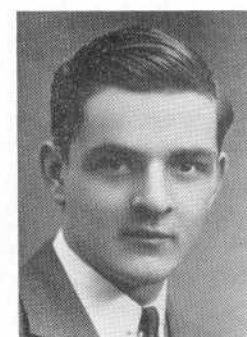
FRANCES PARLIN
"Franny" "Fran"
Design Guild 4
Commercial Club 4
Health Club 2
Chorus 2



HELEN EUSTELLE PARTRIDGE
Commercial Club 3



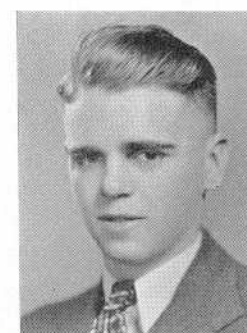
WILLIAM PEIRCE



H. AUBIN PELLETIER
Commercial Club 3, 4



JEANNE E. PELLETIER
Chorus 2, 3, 4
Dramatic Club 3, 4
Design Guild 2, 3, 4
Commercial Club 2, 3, 4



LEO PELOQUIN
"Pete"
Varsity Club 3, 4
Baseball 2, 3, 4
Basketball 4
Record Book Staff 4



GLORIA M. PERRY

Commercial Club 2, 3, 4



LOUISE PERRY

Commercial Club 2, 3, 4



SUETELLE PHILLIPS

"Simmy" "Du Telle"

Home Room Director 2, 3

Chorus 2

Design Guild 2

Commercial Club 2, 3, 4

Dramatic Club 4

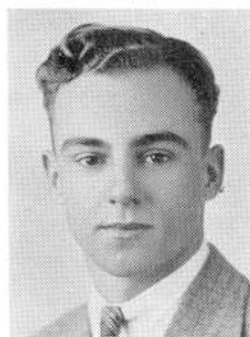


ARTHUR PICHE

Orchestra 3, 4

Band 3, 4

Health Club 2



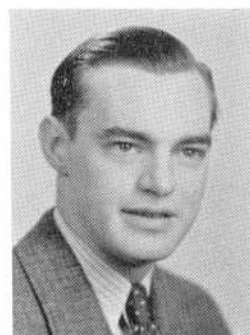
ARTHUR PICKERING

"Art" "Pick"

Home Room Director 2, 3, 4



FRANCES T. PIEKOS



MERLE PIERCE

Commercial Club 4



GAIELLO LEO PIERI

"Jello"

Traffic Squad 2

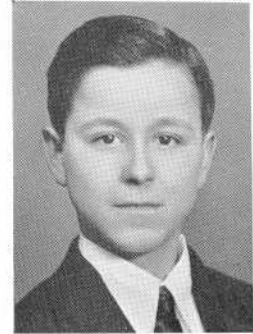
Electrical Club 3, 4



FRANK PIETRYKA

"Pitt"

Traffic Squad 2, 3



MANUEL M. PIRES



ALICE ANNE PIZIO

"Al"

Health Club 2
Home Room Director 3, 4
Library Aids 3, 4
Commercial Club 2, 3, 4



JANE ELIZABETH PLOCICA

Commercial Club 3, 4



RITA PLOURDE

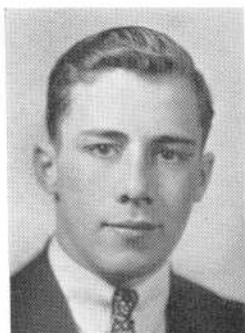
Commercial Club 4
Girls' Numeral Club 4
Volleyball 2, 3, 4
Basketball 2
Gym Leader 4



ANNA POGUBILA

"Porky"

Commercial Club 2, 3, 4
Volleyball 4



CHARLES H. POMFRET

"Chick"

Football 2, 3, 4
Basketball 2, 3, 4
Baseball 3, 4
Home Room Director 1, 2, 3
Vice President 3
Varsity Club 3, 4—Secretary 4



RUTH PORTER

Commercial Club 4
Chorus 2, 4
Home Room Director 2, 3



ALBERT POSNAK
"Possy"



OLIVE POTTS
Commercial Club 2, 3, 4



THELMA ALICE PORTLOCK
Commercial Club 2, 3, 4



AMBROSE ALOYSIUS POWERS, JR.
"Amby" "Al"
Dramatic Club 3, 4
Electrical Club 4



JAMES EDWARD POWERS
"Mike"



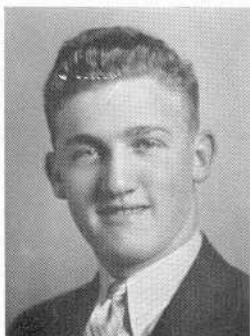
JOHN D. POWERS
Commercial Club 2, 3, 4



BENOIT PRATT
"Ben"
Commercial Club 3, 4



ALMA LOUISE PROSPER
"Al"
Commercial Club 2, 3, 4



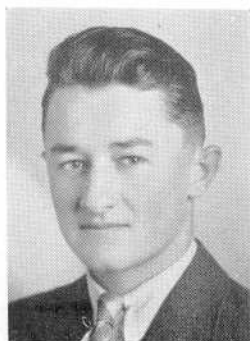
ARTHUR RACHLIN

Health Club 2
Commercial Club 3, 4



EVELYN CLARE RAFTERY

Commercial Club 4



MAURICE RAICHE

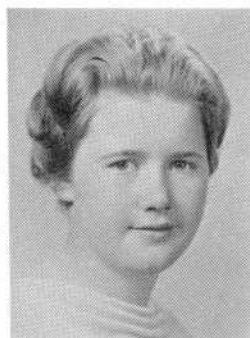
Electrical Club 3, 4
Track Team 3, 4



ALICE L. RAY

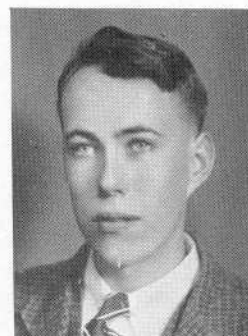
"Al"

Commercial Club 2, 3, 4



DOROTHY REED

Class Vice-President 4
Home Room Director 4
Basketball 2, 4—Capt. 4
Volleyball 4
Chorus 2, 4
Orchestra 4
Advisory Board 4



MILTON REED

Commercial Club 4



EDNA REGAN

"Ed"

Commercial Club 2, 3, 4



RITA ELEANOR REIS

"Rete"

Health Club 2
Home Room Director 3
Commercial Club 2, 3, 4



ANNE FRANCES REMINGTON

Pin and Ring Committee 3
Dramatic Club 4
Commercial Club 4
Dance Committee 4



BEATRICE RENAUD



ZELMA MAY RICHMOND



JAMES ROBERTS

"Jimmy"



BERNICE N. ROBINOVITZ

"Bunny"

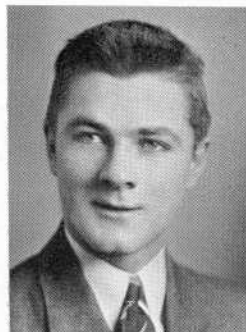
Dramatic Club 4
Home Room Director 3



GEORGE ALFRED ROBINSON

"Achey"

Home Room Director 2



KENNETH ROBINSON

"Ken" "Kenney"

Baseball 3, 4
Varsity Club 3, 4
Football 2



WILLIAM A. RODGERS

"Bill" "Billy"



ARTHUR RALPH ROMANOS

Track 2, 3, 4
Dramatic Club 3, 4
Thespians 3, 4
Home Room Director 3
Photographic Committee—Chairman 4

GERALDINE ROPPE

"Jerry"

Commercial Club 3, 4
Gym Leader 4



IRWIN ROSENBERG

Literary Club 2, 3, 4—Pres. 3
Dramatic Club 3, 4—Pres. 4
Forum 2, 3, 4
Debating Squad 3, 4—Capt. 4
Home Room Director 4
Photograph Committee 4

MYRTLE RITA ROSS

Commercial Club 2, 3, 4
Dramatic Club 4



LUCILLE ROUSSELL

Dramatic Club 4
Commercial Club 2, 3, 4
Chorus 2
Thespians 4

ARTHUR ROY



HELEN RUDD

Home Room Director 2
Dramatic Club 4
Commercial Club 4

MILDRED HELEN RUDDICK

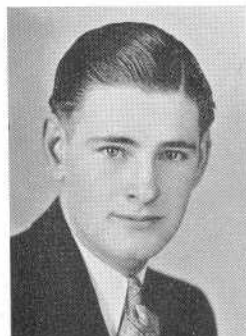
"Millie"

Commercial Club 2, 3, 4

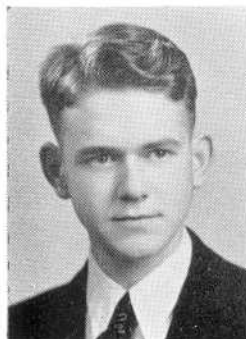




CLEMENT FRANCIS RUTTLE
"Clem"



EDMUND ST. AMOUR
"Eddie" "Flash"



EDMOND G. ST. LAURENT
Design Guild 4
Commercial Club 3, 4
Health Club 2



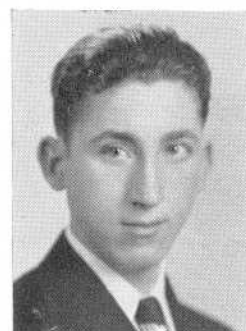
LOUIS SAMSON



DORIS SANFT
Commercial Club 4
Home Room Director 1



YOLANDA CLAIRE SARTI
"Sarti"
Commercial Club 3, 4



MARIANO JOHN SASSO
"Sass"
Commercial Club 1
Health Club 2



FLORENCE SAULINO



JOSEPH SHAW

"Joe"

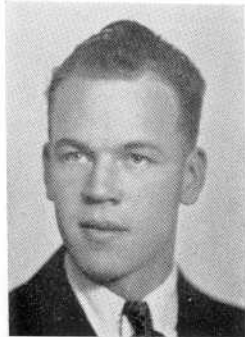
Traffic Squad 2, 3, 4



BEATRICE LOUISE SAVOIE

"Bea"

Design Guild 1, 2



FREDERICK C. SAYWARD

"Fred"

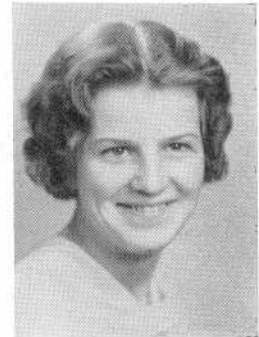
Home Room Director 2, 3

Football 2, 3

Basketball 2

Track 2, 3, 4—Capt. 4

Varsity Club 3, 4



PHYLLIS SEAMAN

"Phyl"

Commercial Club 2, 3, 4

Gym Leader 3



JOSEPH SHAKER

Traffic Squad 3

Football 2, 3, 4

Track 3, 4

Varsity Club 4



MILDRED RUTH SHARPLES

"Millie"

Commercial Club 3



ALICE MARIE SHAW

"May"

Library Aids 3, 4

Design Guild 1, 2, 4



ELIZABETH M. SHEA

"Betty M."

Home Room Director 2

Library Aids 4

Pin and Ring Committee 3

Photographic Committee 4

Secretary of Class 3, 4



ELIZABETH S. SHEA

Forum 3, 4—Secretary 4
Dramatic Club 3, 4
Pin and Ring Committee 3
Dance Committee 3, 4
Photographic Committee 4
Thespians 4

LILLIE SHEA

"Lil"

Girls' Numeral Club—President 4
Basketball 2, 4
Volleyball—Captain 3, 4



PEARL SHOESMITH

Commercial Club 2, 3, 4

HENRY JAMES SHORROCK



MARGARET MARY SHOTT

"Peg"

Design Guild 4

HAROLD SHOVELTON JR.

"Joe"



LOUISE SILVIA

Volleyball 2
Traffic Squad 2
Home Room Director 2, 3, 4

MILDRED SILVER

"Milly"

Literary Club 2, 3, 4
Hilltop 4
Literary Editor 4





ALICE SIMAS
Commercial Club 3, 4



SOPHIE ROSE SKOMIRO
Commercial Club 3, 4



HELEN SMITH
"Smitty"
Commercial Club 2, 3, 4



JOSEPH F. SMITH
"Joe" "Smitty"
Hilltop Staff 3, 4
Basketball 3



LEO SMITH
"Moe" "LeHo"
Baseball 2, 3, 4
Basketball 2, 3, 4
Football 2, 3, 4—Capt. 4
Record Book Staff 4
Advisory Board 4
Varsity Club 3, 4



GEORGINA SOARES
"Georgie"
Commercial Club 2, 3, 4



JOSEPH SOCZEK



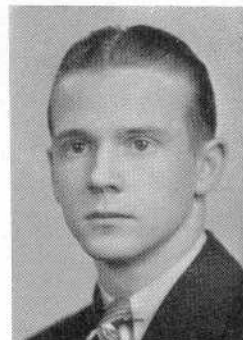
BENNETT SOKOLL
Dramatic Club 4
Thespians 4



MARY V. SOPER

"May"

Commercial Club 4



ALFRED JOHN SOUTHWORTH

"Al"

Traffic Squad 2, 3, 4



JOSEPH T. SOUZA

"Joe"



STEPHEN STASKIEWICZ



MEREDITH STEBBINS

Dramatic Club 4
Chorus 4



IRENE MAE STEININGER

"Weenie"



EDWARD STOCKLINSKI

"Ed"

Tennis 3, 4
Health Club 2



CATHERINE M. SULLIVAN

"Sull"

Commercial Club 3, 4



ESTHER SULLIVAN
Dramatic Club 4—Vice-Pres.



HELEN PATRICIA SULLIVAN
"Sully" "Pat"



HELEN R. SULLIVAN
"Sully"
Commercial Club 2, 3, 4



MARGARET G. SULLIVAN
"Margy"



MARGARET REGINA SULLIVAN
"Peg" "Peggy"
Home Room Director 3
Library Aids 4



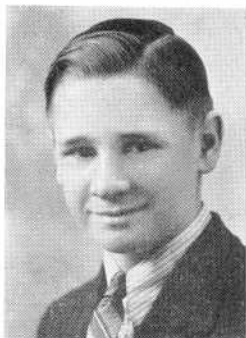
MARION T. SULLIVAN
Health Club 2
Commercial Club 4



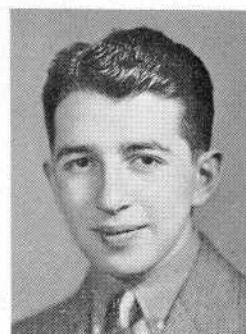
MARJORIE WILSON SULLIVAN
"Marge"



LOUISE CATHERINE SUPRENANT
"Lou"
Commercial Club 3



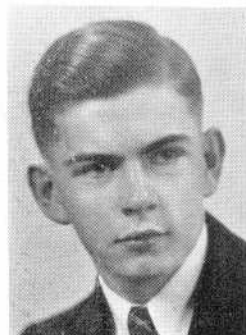
GEORGE D. SUTHERLAND
"Buck"



DAVID SWERLING
Home Room Director 2
Orchestra 2, 3, 4
Pin and Ring Com. 3
Dance Committee
Chairman 4



RUTH HELENA SWINBURN
"Swing"
Commercial Club 2, 3, 4
Library Aids 3, 4



THOMAS ANDREW SYNNOTT
"Tommy"
Electrical Club 3, 4
Home Room Director 3



HELEN SZUBA
Commercial Club 3, 4
Volleyball 4



WALTER TABAK
Commercial Club 4



HUGH TANSEY



SYLVIA TAUBER
Commercial Club 3, 4
Gym Leader 3



JOSEPH TAYLOR

"Joe"

Home Room Director 2



RUTH TAYLOR

Commercial Club 2, 3, 4



SOPHIE TEIXEIRA

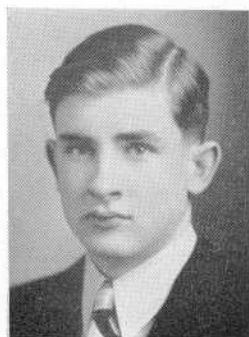
"So"

Commercial Club 3, 4



MARY ISABEL TERCEIRA

Commercial Club 2, 3, 4



WILLIAM TERRY

"Bill"

Home Room Director 3
Commercial Club 4



CHARLES THOMAS

Commercial Club 2, 3, 4



ETHEL MAY THOMAS

Chorus 2, 3, 4—Treasurer 4
Dramatic Club 3, 4
Literary Club 3, 4—Vice Pres. 4
Cheer Leader 3, 4
Record Book Staff 4
Thespians 4



REBECCA TOMPKINS

"Becky"

Commercial Club 3, 4
Volleyball 3, 4
Girls' Numeral Club 4
Basketball 4



ELIZABETH THOMPSON

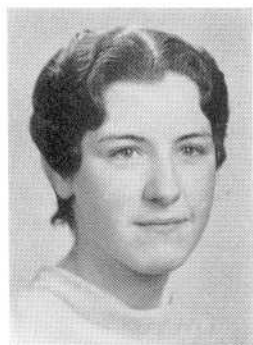
Home Room Director 2, 3
Dramatic Club 4



RILEY TOKARZ

"Ri"

Basketball 3, 4
Capt. 4
Varsity Club 3, 4
Record Book Staff 4



THERESA TOMLINSON

"Tess"



BERNICE ARLEEN TONGUE

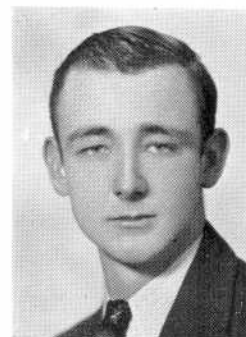
"Ber"

Design Guild 4



LILLIAN MAUREEN TOOLE

"Lill"



WILLIAM TOOLE

"Bill"

Commercial Club 2, 4



RITA AGNES TRIPP

"Snooks"

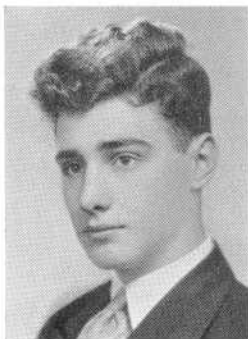
Commercial Club 2, 3, 4



MARGUERITE MARY TROMBINO

"Marge"

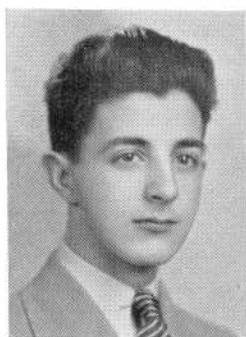
Commercial Club 2, 3, 4



JOHN TURNER
"Bucky"



ROGER VALCOURT
"Val"
Traffic Squad 2, 3, 4



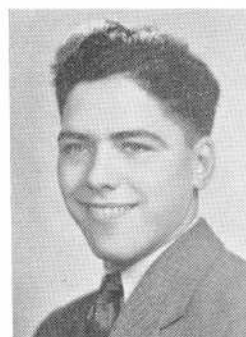
MANUEL C. VASCONCELLES
"Rubinoff"
Orchestra 1, 2, 3, 4
Concert Master 4
Commercial Club 3, 4



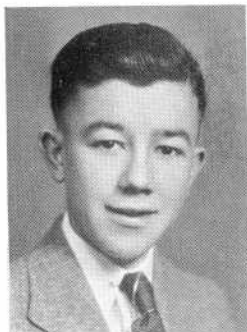
VIRGINIA FRANCES VEASEY
"Ginny" "Vernie"
Commercial Club 2, 3, 4



MANUEL VENICE



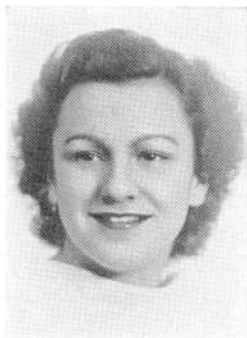
MANUEL VINCENT
"Vinny"
Home Room Director 1, 2, 3, 4
Electrical Club 3, 4—Pres. 4
Dramatic Club 4
Thespians 4
Traffic Squad 4
Associate Editor Record Book 4



JOHN EDWARD VIVEIROS
"Peanuts"



ELSIE GLADYS WAGNER
Chorus 3, 4
Commercial Club 3



MILDRED JOANNE WAGNER

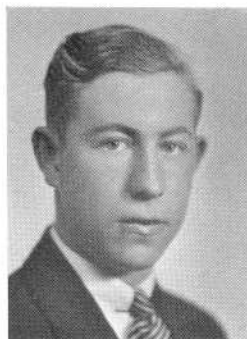
"Millie" "Micky"

Commercial Club 3, 4



BESSIE WALMSLEY

Commercial Club 2, 3, 4



JAMES WALMSLEY

"Jim" "Jimmy"

Football 3, 4

Varsity Club 3, 4



JAMES J. WALSH

"Jim" "Jimmie"



RUTH DORIS WARBURTON

"Warbie"

Home Room Director 2



ALFREDA CELIA WARCHOL

"Freda"

Commercial Club 2, 3, 4



JOHN ANTHONY WARD

"Johnny" "Wardie"

Home Room Director 3

Class Vice-President 3

Dramatic Club 3, 4

Thespians 3, 4

S. A. A. Council 4

Gift Committee 4

Basketball 4



EVERETT E. WARING

"Pip"

Baseball 3, 4



ELMER RIDGE WATTERS

"Butch"

Electrical Club 4



FRANK BRADFORD WEAVER

Electrical Club 2, 3, 4



ALVIN E. WHALLEY

"Al" "Tim"

Basketball 2, 3, 4

Traffic Squad 2

Track 2

Varsity Club 4



MONICA WHELAN



DANIEL F. WHITTY

"Dan'l"



WALTER WILCOX

"Speed"

Home Room Director 2

Traffic Squad 4



EDWIN HOWARD WILKINSON

"Wilkie"



EDITH S. WILLIS

Home Room Director 2, 3, 4

Health Club 2

Ass't Bus. Mgr. Record Book 4



HARRY WILSON
"Harry" "Hack"
Commercial Club 1, 2, 3



SELENA CHACE WINSLOW
Dance Committee 4



RICHARD LESTER WONSON
"Dick"
Chorus 2



HYALIE YAMINS
Dramatic Club 3
Literary Club 2, 3
Vice President 2
Library Aids 3, 4
President 4
Debating Squad 2
Forum 2
Record Book Staff 4



LILLIAN YATES
Commercial Club 2, 3, 4



BELLE YOKEN
Home Room Director 1
Commercial Club 3, 4



HELEN T. ZWIERCIADLOWSKI
Commercial Club 3, 4

HELEN M. ANDREW

FULVIO J. AULISIO

FERN BARNES

SAMUEL BATY

WALTER BERNAT

ALFRED BERUBE

GEORGE BOARDMAN

JOHN BOYD

ARTHUR CAROSELLI

ROBERT CHAPPELL

IRENE COSTA

LUCY DAVIS

RAY DENARDO

PAUL DEXTER

FRANKLIN DOLAN

TEDDY DZIDUSZKO

CHARLES EPSTEIN

ELY EPSTEIN

MANUEL ESTRELLA

HARRY FLETCHER

EVERETT FLYNN

ROBERT FRENCH

GERTRUDE GAGNON

FLORENCE GARDNER

BARBARA GOVAN

THOMAS GREGORY

ERNEST GUINEN

BEATRICE HARRINGTON

ROBERT HARRINGTON

FRED HIGGINBOTTOM

MARIUS JANSON

MAX JOHNSON

GERTRUDE KING

ADA KOSSOI

ARMAND LACAVA

ERNEST LADEVIA

HELEN LEWIS

GEORGE LIMA

ALICE LIMAS

OMER LIZOTTE

EDITH LOCKINGEN

FRANK LOFTUS

VIRGINIA MacDONALD

LILY ANN MARKS

JAMES MARSHALL

FOREST MILLS

HELEN MISH

ALICE MOCKAS

DERWOOD MOLLO

ANN MOORE

CHRISTOPHER MURPHY

IRENE MURPHY

ALPHONSO NOTO

CHESTER O'BRIEN

DONALD O'MARA

HENRY O'MELIA

JAMES RAFFERTY

ROBERT REAGAN

LOUIS REIS

WILLARD ROGERSON

VIOLETTE ROSS

ADELE RUBIN

JANE SANTERRE

JAMES SAUNDERS

EMMA SCHWARTZ

ARTHUR SEAGRAVE

ROSE SENAY

JOHN M. SILVIA

JOHN SIMARD

ALLEN SIMMONS

STEPHEN SKURKA

PETER SNIEZEK

DOMINICK SPERDUTY

JOHN STRAIT

WILLIAM SULLIVAN

JOHN SZYMKOWICY

CHARLES TRAINOR

THOMAS WHITE

DOROTHY WOOD



Rita Reis	Best Looking	John Keefe
Angela Nagle	Most Popular	Leo Smith
Mary Kane	Most Attractive	Edward Lyons
Marion Crossley	Best Known	Leo Smith
Judy Blanchard	Class Sport	Leo Smith
Selena Winslow	Most Original	John Ward
Ethel Almy	Most Agreeable	Leo Smith
Selena Winslow	Best Dancer	Frank Gragnani
Lillie Shea	Most Athletic	Leo Smith
Irma Leviss	Best Dressed	Willard Rogerson
Doris Fitzgerald	Most Talkative	George Brough
Elizabeth Barker	Class Giant	Horace Ingalls
Mildred Silver	Class Midget	Manuel Pires
Lucille Roussell	Most Talented	Manuel Vasconcelles
Helen Rudd	Most Dignified	Irwin Rosenberg
Louise Iadicola	Best Speaker	Irwin Rosenberg
Elizabeth M. Shea	Most Brilliant	John Ciba
Atla Ariel	Class Wit	Ambrose Powers
Margaret C. McGuire	Most Interesting	Manuel Vincent
Mildred Silver	Most Highminded	Eli Epstein
Lucille Roussell	Most Promising	Manuel Vasconcelles
Atla Ariel	Most Mischievous	William Terry
Thelma Portlock	Most Studios	John Ciba
Eleanor Cook	Most Versatile	Manuel Vincent



LIBRARY AIDS



Officers

HYALIE YAMINS

President

ALICE PIZIO

Vice-President

BERTHA GARDNER

Secretary

MISS MARION E. KERNAN

Treasurer and Faculty Advisor



LIBRARY AIDS

Any time during the day Aids may be seen very much at home in our school library. The majority of these Aids are Juniors and Seniors and are selected from the Principal's List by Miss Marion E. Kernan, Librarian. The pupil's general helpfulness, cooperation, and dependability are considered as well as scholastic standing.

The duties are very exacting and sometimes arduous. Each morning, four early risers must be on hand in the library to distribute passes and receive books. Every period several Aids collect and match passes, assist pupils to find material, locate absent pupils and deliver messages and books to teachers and classes. Each Aid is assigned definite shelf sections to keep in order according to the Dewey Decimal System. This is checked twice a week. Library Science instruction is given to all Sophomore pupils and Aids assist here in checking papers. Many times they are called upon for other tasks and render very efficient service.

The monthly dues defray expenses of two parties a year and the Record Book publication. They sponsored a very enjoyable party at Christmas time, and Mr. Charles V. Carroll, Mr. Ralph Small, and Mr. Herbert W. Pickup were invited guests. Another get-together was held in June in the form of a "bacon-bat" at Newport Beach. This ended the social events for the year.

In addition to the officers the following are members: Raymond Brocklehurst, Josephine Cluck, Dorothy Conroy, Eleanor Cook, Helen Donovan, Grace Dunn, John Falcoa, Florence Gardner, Mary Guay, Helen Hinchey, Marie Houde, Edwin Kispert, Edgar Knowlton, Yolande Laliberte, Elizabeth Lamond, Marion Longson, Silvia Lubinsky, Chester Mahon, Lily Ann Marks, Margaret McGuire, Dorothea Newton, Frederick Roach, Frank Sandler, Marie Shaw, Elizabeth M. Shea, Margaret Sullivan, Elizabeth Sweeka, Ruth Swinburn, John Wallace, Mary Whalon, Albert Pontifice, Ruth Gamson, Elaine Howayeck, and Samuel Kaplan.



DRAMATIC CLUB

Officers

President

IRWIN ROSENBERG

Vice President

ESTHER SULLIVAN

Secretary

ELEANOR COOK

Treasurer

ANNA FIORE

Call Boy

JOHN A. WARD

Master of Revels

HAROLD LISCHINSKY

Mistress of Ceremonies

SYLVIA LUBINSKY

Faculty Advisors

MISS BARBARA WELLINGTON

MISS ELIZABETH LEONARD



DRAMATIC CLUB

In 1935-36 the Dramatic Club enjoyed a banner year, presenting a wide variety of productions, successful both esthetically and financially. Attendance reached a new high this year.

The first production—three short plays—was Act I of "Cradle Song," by Georgio and Marie Sierra, an idyllic, warm-hearted, often humorous picture of convent life in Spain. This was followed by an hilarious one-act comedy, "Romance is a Racket," by James Kirkpatrick. Last came a dramatization of two scenes from Charles Dickens' "Christmas Carol."

On January 24 the Dramatic Club presented an Amateur Night which packed the auditorium to the doors and proved one of the most popular events in years. Musical selections, dancing, comic skits, and monologues were offered and prizes awarded.

In February the club cooperated with the Chorus and Orchestra in the presentation of Gilbert and Sullivan's opera, "The Gondoliers."

On April 17 the club presented a three-act play, the Kaufman-Ferber comedy hit of Broadway, "The Royal Family."

Among the various other short plays presented by members, either at club meetings or outside gatherings, were: "Benjamin Franklin, Journeyman"; "Thank You, Doctor"; "Grace Moore Wanted," written by club member, Sylvia Lubinsky; "The Conflict"; "Washington's First Defeat"; and "Two's Company."

On April 4 many members journeyed to Boston to attend the Massachusetts Drama Day where "Cradle Song" was again presented and won for Durfee first honors, which took the cast to the New England Festival on May 22 at Manchester, New Hampshire. Mireille Gaucher won the coveted scholarship award Drama Day.

The club invited New Bedford and Little Compton High Schools to entertain Durfee. Many theater parties were held at neighboring schools and the Club Alumni were welcomed back for their annual dinner dance May 8.

Direction of all productions was handled by Faculty Advisors Miss Barbara Wellington and Miss Elizabeth Leonard.

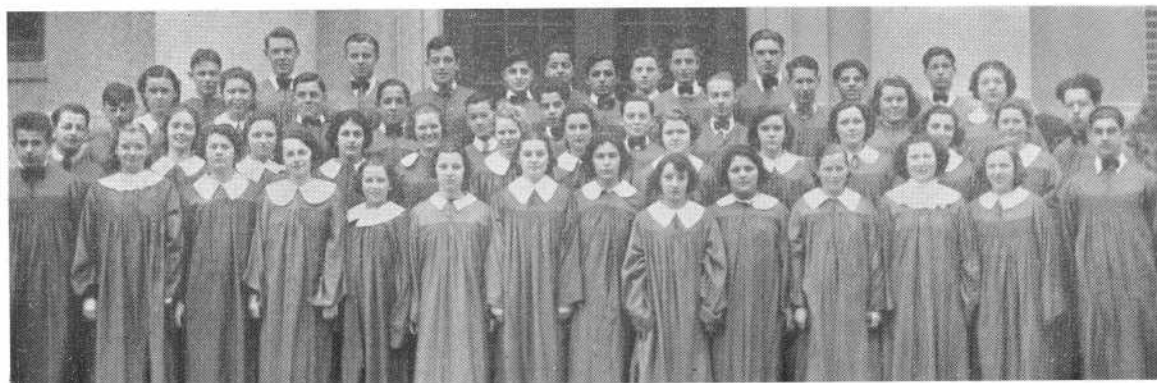


CHORUS

The Durfee Chorus, directed by Miss Helen L. Ladd, numbers sixty—all selected from applicants representing the four classes. At Christmas it marched through the school corridors in gray-gowned caroling procession. In February, assisted by the Orchestra and Dramatic Club, it produced its fifth annual Gilbert and Sullivan operetta—this year "The Gondoliers." A group of nine participated in the New England Festival Chorus at Springfield in March. In May it joined with the Orchestra in their annual concert.

In addition to these regular activities, small groups from the Chorus have sung before other audiences such as the University Women's Club, and the Woman's Club, and have assisted Dramatic Club productions. Two parties rounded out the social calendar.

The Chorus has been, before all else, for the members themselves. Here they indulged in their common musical interest, developed their voices, and perfect harmony is their commendable purpose.



ORCHESTRA

Officers

Manager
JOHN BORJE

Concertmaster
MANUEL VASCONCELLES

Director
MISS HELEN L. LADD

Assistant Director
MISS DOROTHY E. PLUTA

Under the direction of Miss Helen L. Ladd, the Orchestra experienced a very prosperous year. As a result of this prosperity an oboe and a bassoon were added to the instrumentation of the ensemble.

In December they assisted the Dramatic Club by rendering musical selections between the short plays. In February they ably accompanied the Chorus in the Gilbert and Sullivan opera "The Gondoliers."

Five of the members of this organization represented Durfee at the New England High School Music Festival held at Springfield in March. The musical portion of the Dramatic Club production of "The Royal Family" was supplied by the Orchestra.

During Music Week they very creditably performed in a concert presented by the budding music organizations of the city. The Orchestra and Chorus jointly presented a concert in May. The Orchestra's part was masterfully presented.



B A N D

Officers

President
FRANK SANDLER

Vice-President
ALBERT POIRIER

Secretary
ELEANOR COOK

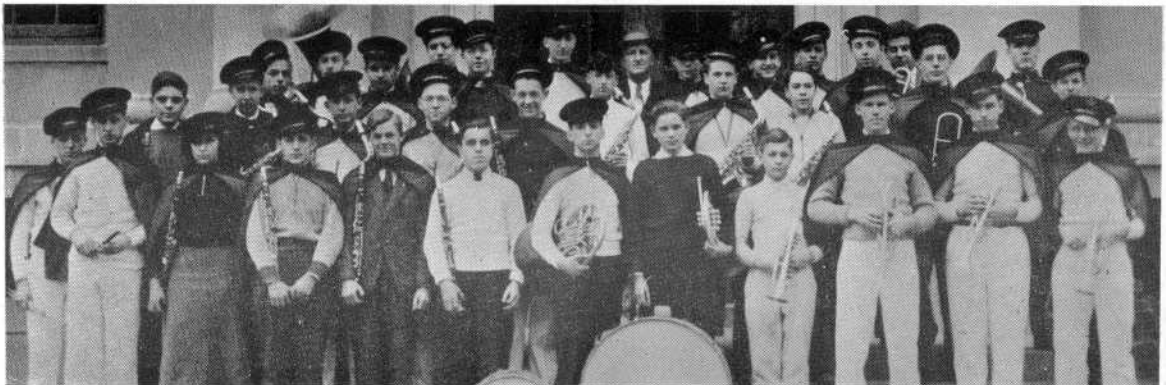
Treasurer and Ass't. Sec.
LOUIS SALHANICK

Leader
CHARLES DRAKE

Director
MR. WILLIAM ALLINSON

The Durfee Band is directed by Mr. William Allinson and drilled by Mr. Ambrose F. Keeley. Its chief activity is playing and drilling at the school football games. As usual this year, it marched in the Armistice Day and Memorial Day parades. It also gave a band concert and played at some assemblies and football rallies. A clarinetist represented this group in the New England Festival Band at Springfield, Mass., in March.

The band rehearses once a week, on Fridays. Its members represent all four classes and include those playing wind instruments sufficiently well for rendition of band music.



THE S. A. A.

The Students' Activities Association has for many years attempted to centralize school activities—social, athletic, and scholastic—and this has been so achieved that now the S. A. A. is the most important organization of the B. M. C. Durfee High School.

Projects such as the S. A. A. Drive, the Officers' Banquet, the Bronze Honor Plaque, the three Upper Class Socials, and the publishing of the All-A Honor Roll, the Principal's List and the Guide for New Students, which were originated in former years, were again successfully carried out this year.

To better our school, the Council, as requested by the students, organized a class on Parliamentary Procedure for officers of all school organizations. It also provided dancing classes for both boys and girls and successfully planned and carried out a "Better Lawn Crusade." Such have been some of its many accomplishments.

Could Durfee do without it? We should say not!—for it is needed and expected to do bigger and better things each year.

The officers are: Marion F. Crossley, president; Edward F. Murphy, vice president; and Daniel Fennelly, secretary. Miss Alice G. Langford, Miss Anna Goff, and Mr. James F. Conlin are the faculty advisors.

In addition to the officers the following are members of the Council: John Ward, Florence Damon, Christopher Murphy, Daniel J. Sullivan, John Wallace, Priscilla Hart, Claire Driscoll, and Warren Prebluda.



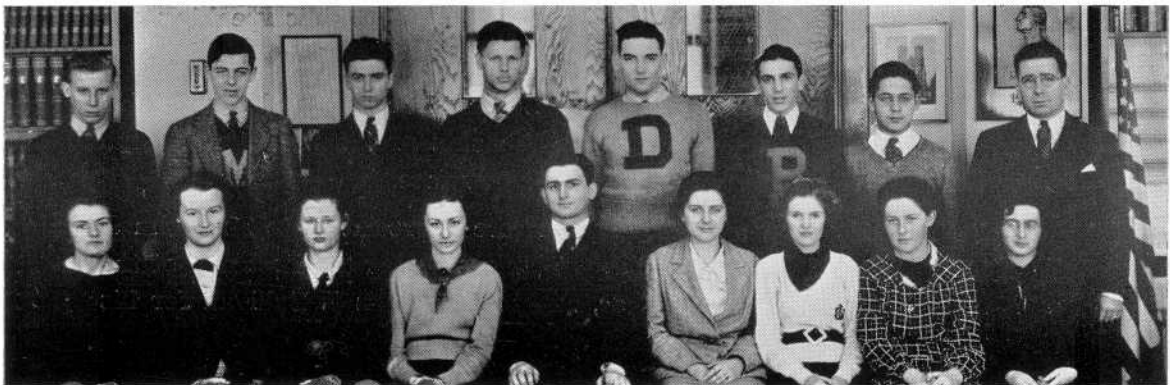
HILLTOP

Under the able advisorship of Mr. John T. Crowley the Durfee Hilltop has completed its fifteenth year.

The Hilltop has many well founded claims. It is the most complete school bulletin and is by far the best means of publicity this school affords. It is also the only means by which business men can advertise their goods directly to the students and moreover it is a very good means for the fostering of school spirit.

The Hilltop exchanges issues with newspapers as far west as California and as far north as Halifax, Nova Scotia. Exchange issues range from a large eight page weekly from California to a four page mimeographed weekly from Connecticut, and a four page high school daily from Indianapolis to a large and interesting tri-yearly magazine from Hyannis.

The able staff includes Jordan D. Fiore, editor-in-chief; Lorraine H. Ashley, assistant editor; Gertrude Paradis and Virginia Mason, associate editors; William Ferguson, 3rd, news editor; Genevieve Bolduc, assistant news editor; Genevieve Foley, business manager; Henry Almond, sports editor; Joseph Smith, Thaddeus Dziduszko, and James Fitzpatrick, assistant sports editors; Elizabeth Harrison, social editor; Eleanor Keefe, circulation manager; Mildred Silver, literary editor; Charles Epstein, colyumister; William Henry, humor editor; and Mary McCauley, head typist.





F O R U M

Officers

President

SANFORD UDIS

Vice-President

LEWIS SALHANICK

Faculty Advisor

MR. LOUIS J. SULLIVAN

Secretary

ELIZABETH S. SHEA

Sergeant-at-Arms

CHARLES BELOVITCH

The Durfee Forum is one of the oldest clubs in the school. Organized for the purpose of fostering interest in debating and public speaking, the Forum annually sponsors the Debating Team.

At the meetings, which are held bi-monthly, debates and round-table discussions are held to present to the students problems, both national and international, which they must eventually face.

The Forum wishes to express its sincere appreciation to Mr. John J. Harrington for his interest and encouragement during the first half of the year when he was Faculty Advisor, and to Mr. Louis J. Sullivan for his willingness to serve as Faculty Advisor.

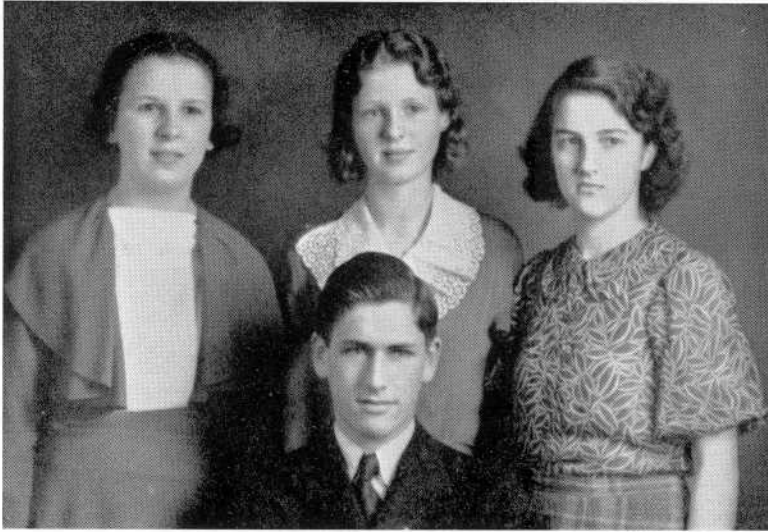


DEBATING

The members of the Debating Team, who have in former years been chosen from the Forum and from participants in Public Speaking and Senior Debating Contests, were this year chosen from the student body after "try-outs" had been conducted by Mr. John J. Harrington, former coach. The Debating Team, which was formerly a member of the Brown Interscholastic Debating League, has again agreed to participate this coming year.

The members of the Debating Team wish to extend their sincere thanks and appreciation to both Miss Elizabeth Leonard and Mr. Ambrose F. Keeley for their assistance as Faculty Advisors.

Members of the squad are: Irwin Rosenberg, (Captain), Dorothy Conroy, Eli Epstein, Harold Lischinsky, Louis Salhanick, Sanford Udis, Edward F. Murphy, and Sydney Epstein.



DESIGN GUILD

Officers

President

SAMUEL GOURSE

Secretary

ANN MANKUT

Faculty Advisor

MISS F. ANTOINETTE PRATT

Vice President

KATHERINE DeGRANGE

Treasurer

MARIE SHAW

The Durfee Design Guild, under the direction of Miss F. Antoinette Pratt, has played an active part in Durfee High activities by rendering services of an artistic nature to the school.

The club members have donated time and effort towards furthering interest in school events by drawing posters to advertise these various affairs—the many posters in the library and on the bulletin board attest to this fact.

The Guild has kept active and has stimulated interest in the various art exhibits and contests which have taken place in this district. Several of the Guild members have entered their work in these exhibits and have received merited commendation. In the Health Poster Contest, which took place this year, three of the four winners were Design Guild members.

On February 19, 1936, twenty-two members of the Guild visited the studio of Mr. John Mann, viewed the murals which he is painting for the Technical Auditorium and listened to an interesting talk by the artist.

Another outstanding event of the year was an exhibition of Fall River scenes and a talk on outdoor sketching by Mr. James McDonough, a local artist. Mr. McDonough also took the club on a sketching trip in May.



GIRLS' NUMERAL CLUB

Officers

President
LILLIE SHEA

Vice-President
LORRAINE VALCOURT

Secretary
GENEVIEVE BOLDUC

Faculty Advisor
MISS MARY F. McCARTHY

Executive Board
JULIETTE BLANCHARD RUTH COLLINS HILDA O'MELIA

The Girls' Numeral Club was organized in February, 1936, under the direction of Miss Mary F. McCarthy, Faculty Advisor, with the purpose of creating more interest in girls' athletics, and assisting the athletic coach in her endeavor to organize an extra-curricular sport program for the benefit of all girls.

Membership is restricted to any Sophomore, Junior, or Senior girl who has earned at least one set of numerals in either volleyball, basketball, or tennis.

Club officers are a president, chosen from the Senior membership; a vice-president, from the Juniors; and a secretary, from either of the two upper classes. An executive or advisory board of three, one from each class, is appointed to assist the officers.

In April, twenty-six members of the G. N. C. were selected to assist WPA instructors at the four parks set aside for the recent recreational project which was organized to interest Durfee girls in tennis, baseball, volleyball, and scotch ball.

ELECTRICAL CLUB

Officers

President
MANUEL VINCENT

Vice-President
FRANKLIN WOOD

Secretary
PETER SNIEZEK

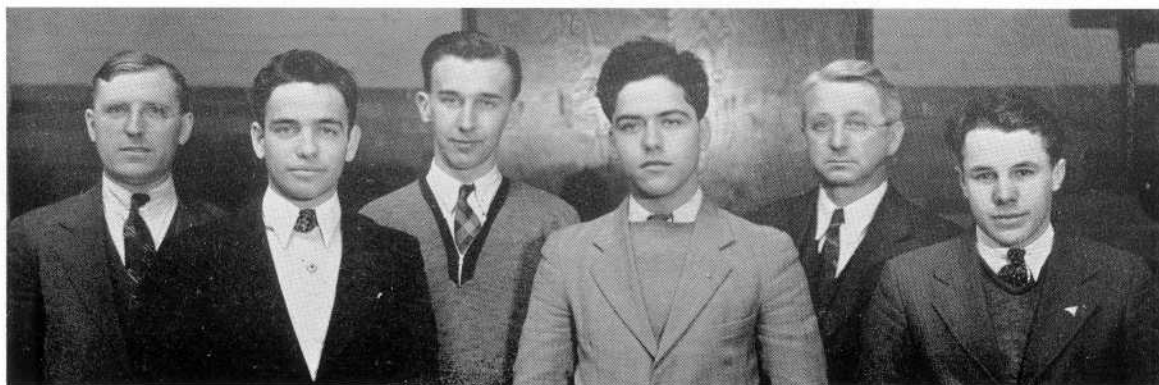
Treasurer
GOIELLO PIERI

Faculty Advisors
MR. MYRON T. ASHLEY MR. HENRY J. SHEA

Under the leadership of president Manuel Vincent the Electrical Club has enjoyed a successful year. The club was formed several years ago to help students interested in electricity who wished to further their education outside the classroom.

The Electrical Club has visited the Montaup power plant, the R. C. A. Communications Company, and many other plants using or developing electric power. Among the speakers who addressed the club this year was Henry Bradbury, its former president, whose talk was on radio. Mr. Ashley and Mr. Shea, instructors of electricity, are the Faculty Advisors of the club.

Appearing in the photograph are: (second row) Mr. Henry Shea, Peter Sniezek, Mr. Myron T. Ashley; (front row) Goielle Pieri, Manuel Vincent, and Franklin Wood.



LITERARY CLUB

Officers

President
ELEANOR COOK

Vice-President
ETHEL THOMAS

Secretary
EDGAR KNOWLTON

Faculty Advisor
MR. AMBROSE F. KEELEY

The Durfee Literary Club is sponsored by Mr. Ambrose F. Keeley. It numbers less than forty, being made up only of those interested in writing. It meets twice a month and discusses the original poems, plays, stories or essays submitted by its members. Its aims are better quality of writing and ability to criticize intelligently.

Shown above are: (front row) Mildred Silver, Esther Kaplan, Herman Gitlin, Ethel Thomas, Eleanor Cook, Edgar Knowlton, Josephine Cluck, Warren Prebluda; (second row) Mr. Ambrose F. Keeley, Elizabeth Lamond, Harold Lischinsky, Anne Robinovitz, Ruth Nacman, Aaron Filler, Dorothy Conroy, Genevieve Bolduc, Francis Bennett; (third row) Ruth Gunning, Irwin Rosenberg, Bernard Miller, Harry Gollub, Theodore Freedman.





COMMERCIAL CLUB

President
LOUISE IADICOLA

Vice-President
LILY ANN MARKS

Faculty Advisor
MISS ISABELLE O'NEIL

Secretary
MARY CAPETO

Treasurer
FRANK LOFTUS

The B. M. C. Durfee High School Commercial Club has completed another successful year. Its popularity during 1935-36 made it necessary to limit its membership to Seniors, who have conducted the club's activities in a commendable manner, under the leadership of a capable president and the supervision of its Faculty Advisor.

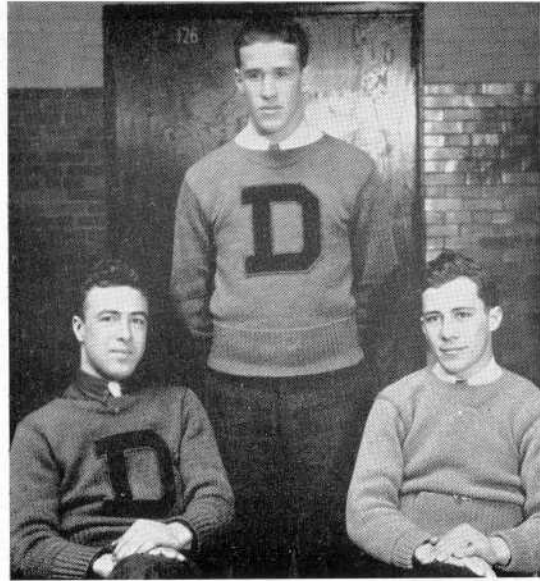
The parties and dances that were held not only helped the members to become better acquainted with each other, but also helped to make the club a social and financial success.

A roller skating party was held this year, the first one the club has ever sponsored, and it proved to be such a great success that it, as well as the annual picnic, is likely to become a regular feature.

The club secured, as a speaker for one of their meetings, Dr. Margaret M. Poole, who presented a valuable talk on "Building for Efficiency," which will be very helpful to the members. The organization has also been prominent in welfare activities at Christmas time.

It is a recognized fact that this club has helped to further the interest of the Commercial students, and through their cooperation it has become a valuable part of the school life.

VARSITY CLUB



President
CHRISTOPHER MURPHY

Treasurer
LEO CARDIN

Secretary
CHARLES POMFRET

Faculty Advisor
MR. STEPHEN NAWROCKI

This club was organized many years ago as a result of a need for a closer union between athletes. Ever since its organization it has been one of the most outstanding clubs at Durfee. Membership is limited to athletes who have earned a varsity 'D' in some sport.

Members who have earned their letter are immediately eligible to participate in the activities of this organization. Dances, frolics, and other forms of amusements are sponsored by the club for the purpose of acquiring funds to help their high school maintain athletics.

TRAFFIC SQUAD

Despite the fact that captains were not appointed, the Traffic Squad organized under the supervision of Miss E. Estelle Miles, Faculty Advisor, performed its duties efficiently.

Briefly the activities of the squad were:

Enforcement of "One Way Traffic" on the stairways.

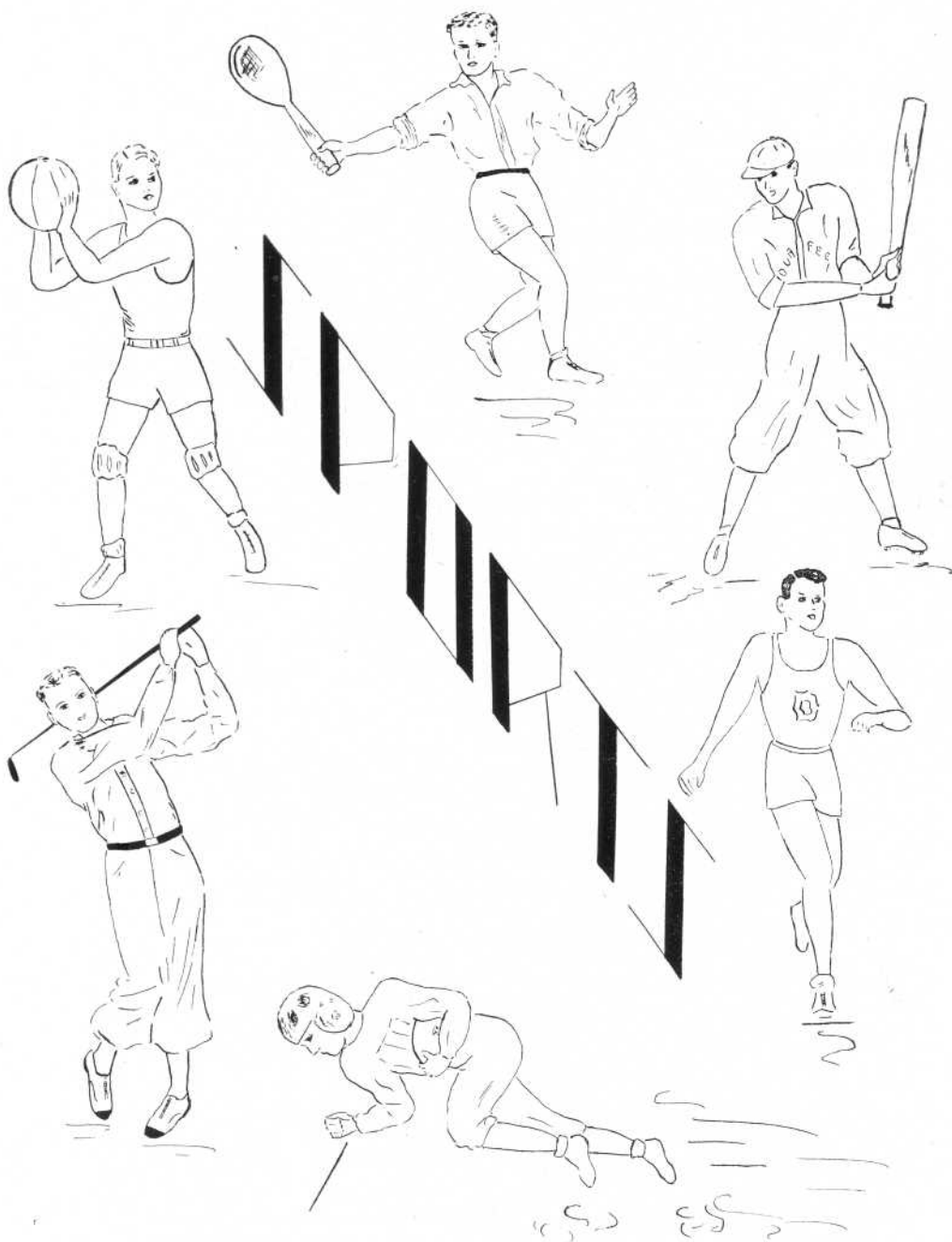
Patrolling of the corridors during the lunch periods.

Placing the "No Passing" signs at Locust and Cherry Streets between each two periods.

Closing Cherry Street so that pupils were obliged to stay in bounds when passing to and from class.

During March when the wind loosened a large strip of copper from the Durfee roof, the Junior and Senior members of the Squad responded to the call of Principal Charles V. Carroll and stayed outside in the rain to prevent the rest of the students from going near the endangered area.

The Squad also attended the football games to prevent the spectators from crowding onto the field.





CHEERLEADERS

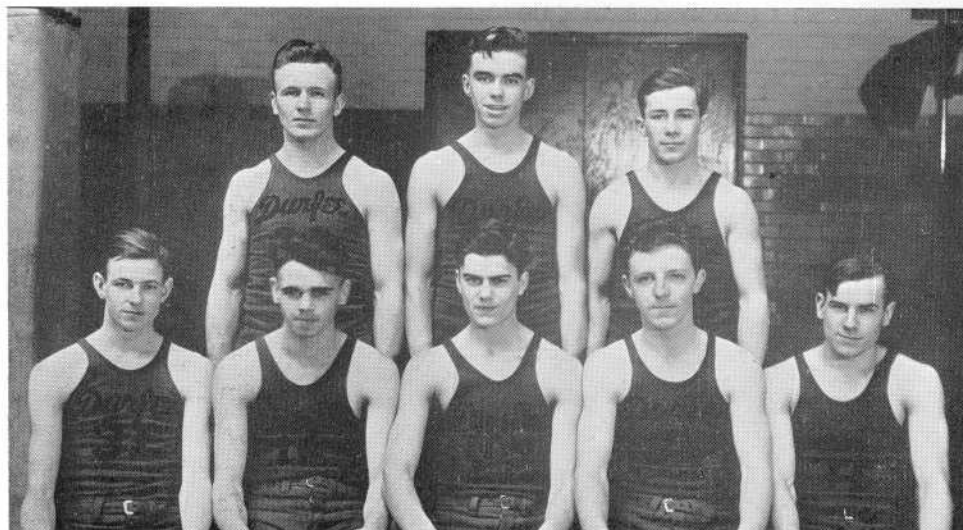
All the cheer leaders this year were present at all home and out-of-town games. In rain or sun the "Artists of Applause" were there to help cheer the team on to victory.

This year the girls were given insignia as a reward for their faithful work. Those receiving the honors were: Seniors—Ethel M. Thomas, head cheer leader, Evelyn Navin and Frances Orzechowski; Juniors—Mary Elizabeth Mannion and Dorothy Conroy.

Our spirited cheer leaders also performed at several assemblies given for the distribution of basketball and football letters, and led the cheers to which the student body responded whole-heartedly.

Appearing in the photograph are: Mary Elizabeth Mannion, Frances Orzechowski, head cheer leader Ethel M. Thomas, Evelyn Navin and Dorothy Conroy.

Many thanks are due Miss Mary F. McCarthy, Faculty Advisor, who devoted much time in helping the girls to succeed.



BASKETBALL

Durfee was represented on the basketball court during the 1935-36 season by a light but fighting team. Enjoying a fairly successful season the team was twice defeated by New Bedford, Coyle, and Fairhaven. On the other hand, it never defeated the same team twice.

Although handicapped by the changing of coaches in the middle of the season, the team continued to fight every inch of the way. Tom Hammond, a former Durfeeite, donated his services for the major part of the season and produced a fine team.

Two lettermen formed the nucleus of this year's team, Captain Riley Tokarz and Chet Goodwin. Several subs from last year's second team also returned—"Chick" Pomfret, Leo Smith, Al Whalley, Al Forgette and Leo Peloquin.

Captain Riley Tokarz proved himself a capable leader all during the season and was the mainstay in the backcourt. Leo Peloquin and "Chick" Pomfret were the handy men on the squad, playing either forward or guard positions. Al Whalley starred throughout the season at center. He gained rebounds from both backboards and was an important factor in the passing game. Leo Smith, another guard, performed very well in the backcourt with Tokarz and held opposing forwards to very few points. Whalley and Peloquin played 15 games while all the others played between 8 and 14 contests.

FOOTBALL

This year the Durfee Football Team turned in a fairly good record winning four games and losing five. Four of the five games lost were no disgrace to our boys who went down fighting and were nosed out in these contests by a narrow margin.

The team began the season with a victory over De La Salle of Newport, beating them 18-0, and took the second game of the season from a powerful Attleboro eleven by a score of 8-0.

The boys lost the next two games. Fairhaven defeated them in the closing minutes of the game. The score was 7-6. New Bedford Vocational took the following game with a score of 12-6.

After beating a strong Coyle team 6-0, the boys went down to defeat in the remaining contests, losing 18-0 to Worcester Classical, and losing to Taunton, 7-0.

On Thanksgiving Day, Durfee's boys played the best game of the season. They completely outplayed New Bedford, scoring 12 first downs to 4 by New Bedford. In the closing minutes Durfee reached New Bedford's 3-yard line, but the breaks were against them and the boys returned to the clubhouse a down-hearted but unashamed team and willing to wait another year to "take" their Turkey Day rivals. New Bedford won 6-0.

At the close of the season the trophy for the most valuable player on the team was presented to Captain Leo Smith, by a vote of the entire squad.

Players who are among this year's class are Captain Leo Smith, "Chick" Pomfret, Chris Murphy, Jim Walmsley, Leonard Flores, George Stinton, Joe Arruda and Joe Shaker.



BASEBALL

Durfee High may well be proud of its 1936 baseball team for, to date, the squad has won eight of its nine games and seems destined to be state finalists as well as Conference champions. The team is under the direction of Coach Leslie Orcutt, Assistant Coach Wendell Thompson, and Captain Joe Arruda.

The team exhibited a powerful batting attack as it won its first eight games before bowing to Coyle High, 3-1. Double victories were scored over Vocational and Holy Family and single victories over the Alumni, Fairhaven, New Bedford, and Taunton.

Ken Robinson, senior ace, pitched a one-hit game and his mates worked a squeeze play in the ninth to defeat Taunton in the best game seen at Alumni Field in many a year. Robinson has won five of his six games to date.

New Bedford was walloped, 11-0, as the Red and Black staged a prolonged batting spree behind Robinson's hurling.

Seniors prominent in the team's success are: Captain Arruda, a three-year veteran outfielder and All-County player; Ken Robinson, speed ball hurler and leader of county moundsmen; Chick Pomfret, heavy hitting catcher and infielder; Leo Smith, who overcame an injury jinx and played consistent ball for three years; Neil Donovan, hard-working infielder for three years; Walter Crawley, smooth fielding infielder and hitter; Leo Peloquin, sensational shortstop; Art Benson, silent but smooth outfielder; Pip Waring, one of the greatest fielders ever seen at Durfee; Ed Callahan, a steady hard-hitting second baseman.





COMPLIMENTS OF

JOSEPH L. HURLEY

LIEUTENANT-GOVERNOR

CLASS OF 1916

Youth continues to choose

Bachrach

This year, last year, and for sixty-eight years previously, students with verve and imagination have chosen Bachrach and will, we hope, for time to come.



Bachrach

Photographs of Distinction

56 No. Main Street
Fall River

Tel. 4703

Let's See

**THE RIGHT KIND
OF
LIGHT**

IS KIND TO THE ROOM AND IS KIND TO
THE EYES OF THE FAMILY AND GUESTS

BETTER LIGHT

BETTER SIGHT

FALL RIVER ELECTRIC LIGHT CO.

85 NORTH



MAIN STREET

John P. Nowell, Jr.

MILL STOCKS

INVESTMENT SECURITIES

Archer Building

38 Rock Street



MANY OF THE
PICTURES IN THIS

Year Book

WERE TAKEN
IN THE
PHOTOGRAPH
STUDIO OF

CHERRY & WEBB'S

AFTER
HIGH SCHOOL
WHAT ?

Business Offers
good opportunities

PREPARE
for positions as

Secretaries
Accountants
Stenographers
Bookkeepers

DAY AND EVENING DIVISIONS

Information gladly given

Thibodeau College

A Local School

130 South Main Street Fall River

HIGH SCHOOL NEWS
IS FEATURED IN

THE
Herald News

Fall River's Home Newspaper

CLASS RINGS FOR 1936

Furnished by

LOREN MURCHISON & CO., Inc.

828 Park Square Building

Boston, Massachusetts

ENGRAVING

for the

**NINETEEN THIRTY-SIX
RECORD BOOK**

Made by

Howard-Wesson Co.

Worcester, Mass.

LEARY PRESS

Fall River

Compliments of

AMICI

Compliments of

FIDAMIES

Fall River's Leading Sportsman's
Headquarters

**FOSTER'S
SPORT SHOP
GROCE'S**

Est. 1882

Phones 1612—1485 Fourth & Pleasant

W. SEYMOUR GRAY

Typewriters and Supplies

Royal Portable & Standard Typewriters

145 SECOND STREET

PHONE 449

BRALEY'S CREAMERY, INC.

Fall River Massachusetts

Distributors of

**BIRELEY'S
CALIFORNIA
ORANGEADE**

MADE WITH PURE FRUIT JUICE

**THE
NONPAREIL CONFECTIONERY**

Ice Cream—Tea Room

135 So. Main St. 1200 Pleasant St.

DIAMONDS

WATCHES



FALL RIVER, MASS.

154 SOUTH MAIN STREET
PHONE 1627

JEWELRY

CLOCKS

SILVERWARE

ESTABLISHED 1842

ADAMS BOOKSTORE

**BOOKS AND
STATIONERY**

We Specialize in School Supplies

165 NORTH MAIN STREET

TALBOT & SON, INC

Next to City Hall

Outfitters to Men and Boys

**GRADE A MILK — CREAM
PLAIN AND CHOCOLATE MILK**

SOLD IN TECH CAFETERIA

—From—

**CHAREST & SON
DAIRY**

OFFICE: 564 KING PHILIP ST.
Dairy: 529 Birch Street Telephone 500

BEST WISHES
From Speedwell Farms Ice Cream

**LYNDONVILLE
CREAMERY ASSOCIATION**

REAR 141 ROCK STREET

PHONE 3773

**HUTCHINSON'S
ART SHOP**

Pictures—Picture Framing

Artists' Supplies

DIPLOMAS FRAMED

154 SECOND STREET

Compliments of

VIVE SOCIETY

**CHERRY & WEBB'S
LENDING LIBRARY**

Where the "books of the day"
Can be had at very little to pay.

Compliments of

EAGLE RESTAURANT

Compliments of

EAGLES AERIE
NO. 570

YOUR FRIEND !

"SONNY BOY" BREAD

Try It, and Be Convinced

A Good Loaf of Bread,
Made in Your City by
Fall River Bakers

AMERICAN BAKERY

Compliments of

THOMAS D. MORIN

"YOUR JEWELER"

332 STAFFORD RD.

Phone 6260

Compliments of

JOHN FRIAR

Compliments of

W. J. GINGRAS

GENERAL INSURANCE

GRANITE BLOCK

KANE'S SHOE SHOP

SMARTEST

MEN'S SHOE STORE IN TOWN

12 NORTH MAIN STREET

Durfee Theatre Building

BOWENVILLE COAL CO.

CONSULT US FOR YOUR HEATING
PROBLEMS

10 THIRD ST.—TEL. 4023

Exclusive Agency for "Blue Coal"

Compliments of

AL DAVIS' MEN'S SHOP

Compliments of
ALEXANDER C. MURRAY

W. HARRY MONKS
REAL ESTATE
AND
INSURANCE
GRANITE BLOCK

Specialists in Outfitting
Athletic Teams
WALTER C. FRAZE CO.
9 NO. MAIN STREET
SPORTING GOODS
Class Rings Cameras

Compliments of
M. W. BREARLEY

Compliments of
NOBBY MEN'S SHOP
162 SO. MAIN ST. Tel. 4779

DAFGARD'S
ELECTRICAL AND CARBURETOR
SPECIALISTS
283 PLEASANT STREET

SERVICE FIRST MOTORS Inc.
229-241 PLEASANT STREET
FORD
SALES AND SERVICE
"Watch the Fords Go By"

Compliments of
A FRIEND

Compliments of
LIST BROS.

Compliments of
ALLIE HORVITZ

Compliments of
HICKEY'S PHARMACY

Compliments of
SIGMA BETA NU
SORORITY

Compliments of
TALBOT PHARMACIES

Compliments of
JOHN F. STAFFORD & CO.
INSURANCE
88 PLEASANT STREET

Compliments of
DR. EARLE E. HUSSEY

BROW'S DRUG STORE
For Eczema and All Skin Troubles Use
BROW'S ECZEMA OINTMENT
PRICE 50 CENTS
127 STAFFORD ROAD

YOUR GUIDE TO COTTON QUALITY



PEPPERELL
MANUFACTURING COMPANY

FALL RIVER



High School graduates seeking a Higher Education for Business may secure their college training and degree at a saving of one to two years of time and college expenses.

An invitation is extended to visit the campus, inspect the comprehensive group of newly equipped buildings, and discuss problems in person.

The College Catalogue and Pictorial Book will be mailed free upon request.
Address The Director of Admissions.

BRYANT COLLEGE
FOUNDED 1863

School of Business Administration
School of Secretarial and Executive Training
PROVIDENCE, RHODE ISLAND

CLASS OF '36

SUCCESS

Loring
STUDIOS, INC.

392 SPRING STREET

Autographs

Autographs

Autographs

Autographs

Autographs

Autographs

Autographs



PRINTED BY
C. J. LEARY & SONS, INC.
FALL RIVER

