

EX LIBRIS



1937


B. M. C. Duffee High School

The

RECORD

*Published by
the Senior Class*

Fall River, Massachusetts



WITH merited appreciation
and in grateful remembrance
of your kindly and sincere
interest in our student life at
Durfee, we of the Class of
1937, dedicate our Annual,
the RECORD BOOK, to you.

D E D I C




DON FREDERICK ANDRUS

Teacher - Student - Scholar

A T I O N

FOREWORD



H OPEFUL THAT OUR EFFORTS MAY MEET YOUR EXPECTATIONS, THE STAFF PRESENTS THE RECORD OF THE CLASS OF 1937. ● THE MOTIF AND COLOR OF THE OPENING PAGES SERVE AS AN INTRODUCTION TO THE SENIOR CLASS PORTRAITS AND STRIKE A COMMEMORATIVE NOTE IN THE SOUND WAVES EMANATING FROM THE CHIMES OF DURFEE ON THE FIFTIETH ANNIVERSARY. ● WE HAVE SOUGHT TO SET FORTH LIFE AS WE SAW IT AND AS YOU EXPERIENCED IT AT DURFEE DURING OUR STUDENT DAYS. MAY THE VOLUME BRING HAPPY MEMORIES AS TIME MOVES ON.

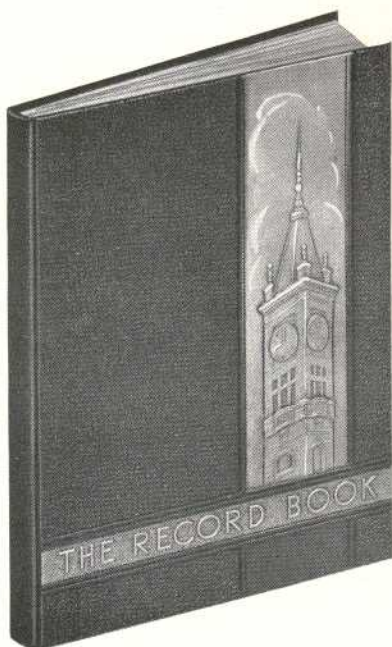
Seniors

Activities

Athletics

Advertisements

CONTENTS



THE STAFF

Editor-in-Chief

MARGUERITE ANNE O'CONNOR

Assistant Editors

BEATRYCE DOROTHY DAVID

SANFORD WILLIAM UDIS

Business Manager

ALYCE ELEANOR FARYNIARZ

Assistant Business Managers

NANCY ELIZABETH ENTWISTLE

JOHN JAMES McAVOY

Faculty Advisor

MR. HARRY P. LYNCH



RECORD BOOK

In the compilation of the 1937 edition of the Record Book, the Staff has endeavored to make this volume outstanding in those qualities of design and composition which have earned for the Record Book a place among the better Year Books.

We have kept before us the achievements of past publications, and we have worked untiringly that we might not only maintain the high standing of other years but move a little higher in this year's edition of the Record Book.

In our presentation of the 1937 edition for your approval, we also take note of the Fiftieth Anniversary of the founding of B. M. C. Durfee High School, and we trust that this volume may in a measure commemorate this event.

The co-operation of the Faculty Advisor, Mr. Harry P. Lynch is gratefully acknowledged.

Miss Marguerite O'Connor, Editor-in-Chief, had as her assistants Be-
atryce David and Sanford Udis. Miss Alice Faryniarz, Business Manager,
was assisted by Nancy Entwistle and John McAvoy.

Other members of the Staff were Edward Murphy, Lorraine Valcourt,
Ruth Brown, Diocleciana Stone, Humberto Medeiros, Alfred Forgette, Edward
Henrys, Raymond Torpey, James Felder, Aaron Filler, Marion Thomas, Mary
Mannion, Pearl Ehrenhaus, Sylvia Lubinsky, Dorothy Conroy, Chester Good-
win, Liberatto Mauretti, Lillian Lincoln.

And so the Staff bows to a great Class, "Great! Always great, without
striving to be great."

THE FACULTY

Principal

CARROLL, CHARLES V.

Vice Principals

SMALL, RALPH M.

PICKUP, HERBERT W.

Allard, Louis A.
Allen, Ralph C.
Andrus, Don F.
Ashley, Myron T.
Bent, Eugenie W.
Brightman, Ernest L.
Campbell, Emily B.
Carpenter, Mary L.
Carroll, Joseph O.
Carroll, Mildred V.
Carvalho, John A.
Chase, Winifred F.
Cleare, William M.
Coggeshall, Dexter E.
Cole, Lillian F.
Conlin, James F.
Connors, Mary B.
Cook, Berton E.
Corcoran, Mary F.
Coyle, George F.
Crowley, John T.
Dailey, Margaret G.
Davis, E. Christine
Delahanty, Edna U.
Dolan, Mary A.
Donnelly, John V.
Dow, Ruth N.
Downs, Edward B.
Duffy, Andrew L.
Earle, Charles C.
Fletcher, Ralph J.

Forster, Gladys G.
Foulkes, Carrie T.
Goff, Anna M.
Gottwald, Frederick J.
Harlow, Mabel
Harrington, Frederick J.
Harrington, John J.
Hathaway, Joseph R.
Hoar, George C.
Jouett, Blanche I.
Judge, Mary E.
Kaylor, William F.
Keefe, Margaret F.
Keeley, Ambrose F.
Kernan, Marion E.
Lane, Frank D.
Langford, Alice G.
Laporte, Louise C.
Lautal, Olga A.
Lawlor, Joseph J.
Lee, Mary
Leonard, Elizabeth L.
Lomax, Katherine F.
Lord, John G. E.
Lowney, Margaret F.
Lynch, Harry P.
Macdonald, Margaret E.
Maleady, Helen
Maronpot, Raymond P.
McCarthy, Mary F.
McCarty, Anna G.
McHale, Rose E.

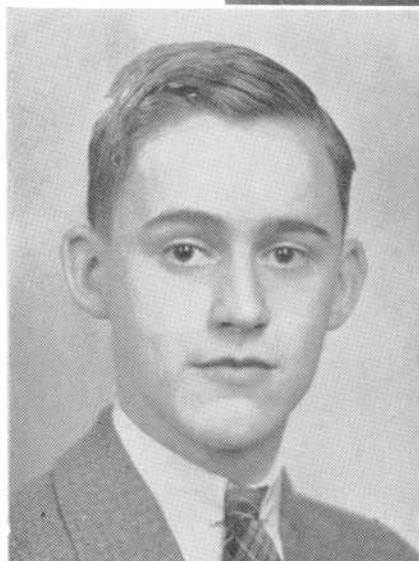
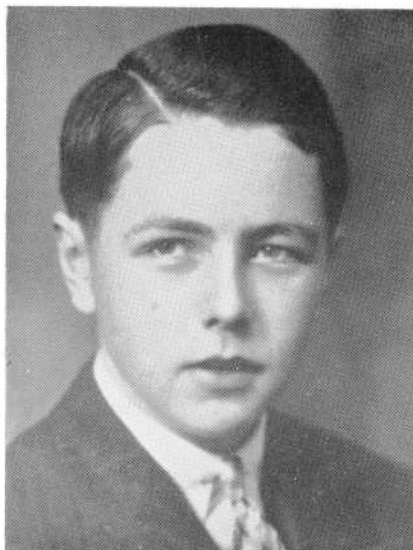
Mello, Victor E.
Miles, E. Estelle
Mitchie, George A.
Nawrocki, Stephen
Newkirk, Ruth W.
O'Connor, Margaret M.
O'Neil, Anne L.
O'Neil, Isabelle
Orcutt, Leslie W.
Pratt, F. Antoinette
Pritchard, Florence G.
Ramsay, Maybelle E.
Ryan, Mary E.
Salmond, Malcolm G.
Seagrave, Sylvia W.
Shea, Henry J.
Smith, Charles D.
Smolensky, Hilda I.
Spring, Mabel A.
Sullivan, Catherine R.
Sullivan, Daniel J.
Sullivan, Dorothy C.
Sullivan, Helena V.
Sullivan, Mary H.
Thompson, Marian R.
Torphy, Marion L.
Townsend, Ella L.
Townsend, John M.
Vosburgh, Ruby M.
Walsh, Anna F.
Wellington, Barbara
Williston, Amasa F.
Withrow, Helena H.

An abstract graphic design featuring a central horizontal band with the word "SENIORS" in a bold, sans-serif font. Above and below this band are several vertical lines of varying heights and thicknesses, creating a symmetrical, architectural feel. The lines are black on a white background.

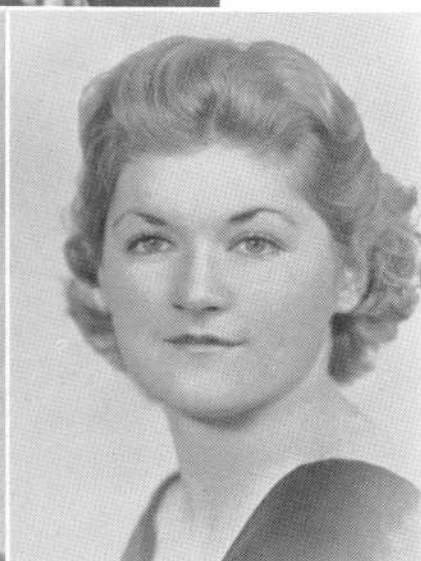
SENIORS

CLASSES · OFFICERS

President
DANIEL J. SULLIVAN



JOHN JAMES McAVOY
Vice President



DOROTHY PAULINE CONROY
Secretary

H
A
L
L
.
O
F
.
F
A
M
E

Daniel J. Sullivan

Edward J. Murphy

Marquerite Anne O'Connon

Alyce Eleanor Tarnyniarz

Dorothy Pauline Conroy

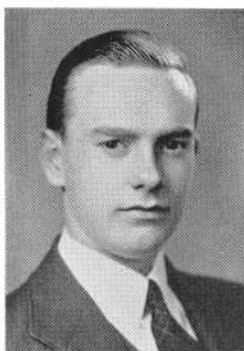
Sylvia Zola Lubinsky

Ruth Patricia Brown

Alfred Torgette

Chester James Goodwin

Melvin Thomas Stinton



ANDREW BORDEN ADAMS

"Andy"

Home Room Director 2
Traffic 2
Chorus 2

"Andy"

DOROTHY H. ADAMS

"Dot"

1937



EVELYN BARBARA ADLER

"Sis"

Orchestra 2

"Sis"

JAMES ALBANESE

"Jimmie"



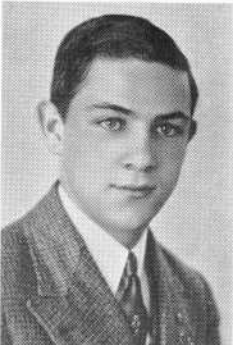
RENNIE ALTHAM

"Wimpy"

JOSEPH ANDRADE

"Joe"

Home Room Director 2, 3



MANUEL V. ANSELMO

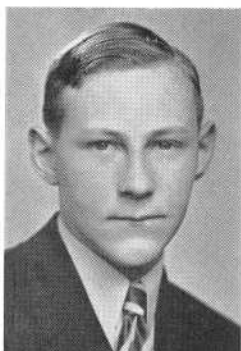
"Manny"

RUTH FRANCES ATKINSON

"Red"

Home Room Director 3
Commercial Club 3, 4





DONALD EARLE AUSTIN

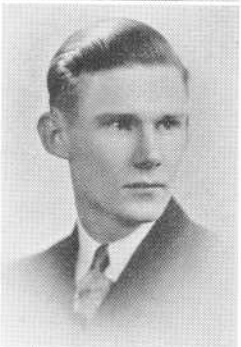
"Don" "Happy"
Traffic 2, 3



GERTRUDE BACON

"Gert"
Home Room Director 2

Gert



JOHN S. BAKER

"Baker"
Band 3, 4
Orchestra 3, 4
Commercial Club 2, 4
Health Councillor 2
Traffic 2

Jack



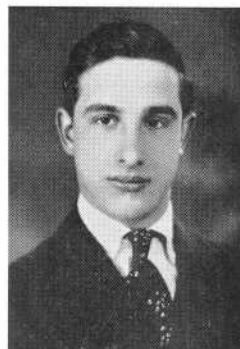
NORMAN BARLOW

Home Room Director 2, 3
Orchestra 4—Chorus 4

Norm

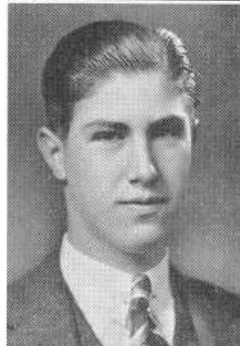
ALBERT AZEVEDO

"Al"



DAVID BAILEY

Dave



AMERICO BALDAIA

Traffic 3, 4, 1st Lieut.—
Dramatic Club 4



OSCAR L. BARON

Traffic 2, 3, 4
Electrical Club 2, 3
Design Guild 1, 2, 3
Health Club 2
Dramatic Club 3, 4
National Thespians 4



1937

1937



FLORENCE JOAN BEDRICK

Home Room Director 4
Dramatic Club 3, 4

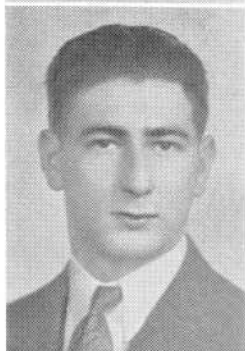
EDMOND BELLEFEUILLE

"Eddy"



CHARLES BELOVITCH

Forum 2, 3, 4
Sergeant-at-Arms 3
Vice-President 4
Debating Team 3, 4
Track Team 2, 3, 4
Commercial Club 4



ANNE ELIZABETH BENNETT

"Betty"



ANGELINE BERNIER

"Angie"

Health Club 2
Home Room Director 3



Angie

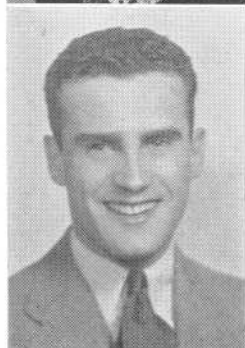
CECILE ANNETTE BERUBE

Commercial Club 4



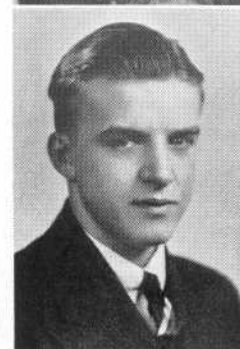
CHARLES BEVILACQUA

"Chuck"



EDWARD HOLLIDAY BIRD

Commercial Club — Traffic





VIOLET FRANCES BLACKBURN

"Vi"

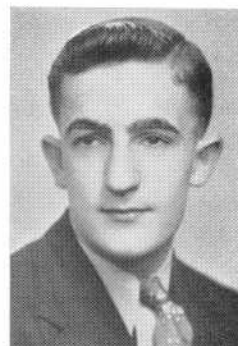
Commercial Club 2, 4
Gym Leader 4

Violet

JOHN JOSEPH BLAKE

"Blakey"

Electrical 4



DOROTHY BLOOD

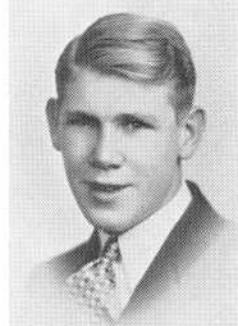
"Dot"

Home Room Director 2

Dot

GEORGE BOARDMAN

"Jid"



CLAIRE THERESA BOISSELLE

HELEN BOOCOCK

Home Room Director 3
Commercial Club 4



ROBERT BOOTH

"Bob"

Football 2, 3, 4
Basketball 2, 3
Track 2, 4
Varsity Club 3, 4

GARDNER COOK BORDEN

"Chief" "Prof"

Home Room Director 2
Traffic 2, 3, 4—1st Lieut.



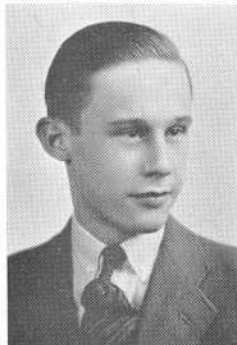
1937



WALLACE BORDEN

"Wally"

Home Room Director 2, 3



FRANK R. BORGES, Jr.

Health Councillor 2

Electrical Club 2, 3—Sec'y 4



LORRAINE ANITA BOUCHER

"Crumb" "Lorrie"

Home Room Director 3

Commercial Club 4



NELLIE MAY BRADFORD

Commercial Club 2, 4

Gym Leader 3, 4

"May"

ALBERT P. BORETTI

"Al"

Home Room Director 1, 4

Commercial Club 4

HENRY EUGENE BOUCHER

"Butch"

Commercial Club 4

JOHN BOWER

"Jack"

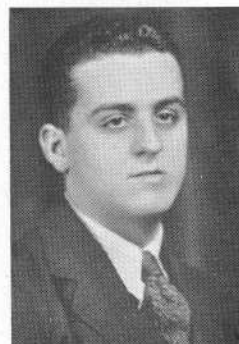
Track 2, 3, 4

Electrical Club 4

JOHN P. BRADY

Commercial Club 4

1937





RUTH ELEANOR BREEN

Commercial Club 2, 4
Gym Leader 3, 4



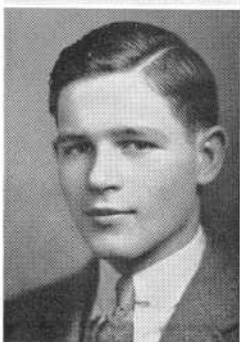
GRACE BRICKHILL

"Ray"



MARY ALICIA BRITLAND

Commercial Club 4
Orchestra 2



RAYMOND A. BROCKLEHURST

"Brock"

Home Room Director 3, 4
Library Aid 3, 4

E. RUTH BRETT

"Ruthie"

Ruthie

RICHARD HOWELL BRIGHT

"Dick"

"Dick"

MARY ANN BROCHU

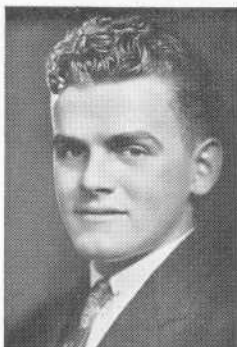
Home Room Director 2
Commercial Club 4



GARDNER BROWN



1937



ROBERT BROWN

"Bob"

Commercial Club 4

1937

RUTH PATRICIA BROWN

Health Club 2
Dramatic Club 4
Record Book Staff
Hilltop News Editor 3, 4
President Commercial Club 4



ANTOINETTE BUCKLEY

"Toni"

Dramatic Club 4
Commercial Club 3, 4



NANCY ELIZABETH BUMP

"Nan"

Nancy



DOROTHY MAY BURGESS

"Dot"

Commercial Club 4



HELEN LOUISE BURKE

Commercial Club 2, 4



RITA LOUISE BURKE

Advisory Board
Dramatic Club 3
Class Secretary 2
Home Room Director 2, 3
Hilltop 3—Business Mgr. 4

Rita



ERNEST W. BUTLER

"Ernie"

Baseball 2, 3, 4





M. GLORIA CABRAL

Basketball 3
G. N. C. 2, 4
Gym Leader 4



COLIN ROBERT CAMPBELL

Dramatic Club 4
Commercial Club 4
Track 3, 4

Colin



GERTRUDE ELAINE CANOLE

"Gert"

Commercial Club 2, 4



BERTHA ESTELLE CARTER

"Stella"

Volleyball 3, 4
Gym Leader 3, 4
Commercial Club 2, 4
G. N. C. 3, 4—Forum 4
Traffic 3, 4—Debating 4

Bertha

MARGUERITE M. CARTIER

"Margot"

Photographic Com.—G. N. C. 4
Home Room Director 4
Pin and Ring Com. 3
Health Councillor 2
Hilltop Staff 3, 4

Margot

1937

PHEBE CAHOON

Design Guild 3
Gym Leader 3

Phibe



NORMAN CAMPEAU

Chorus 3—Bus. Mgr. 4
Dramatic Club 3



DOROTHY M. CAREY

"Dot" "Dotty"

Commercial Club 2, 4





GEORGE CARPENTER



EDWARD CORREIA



CHARLES A. CARVALHO
"Charlie"

Band 2, 3, 4
Orchestra 4

Charlie



WALTER CASEY
"Jones"

RHEO CARPENTIER

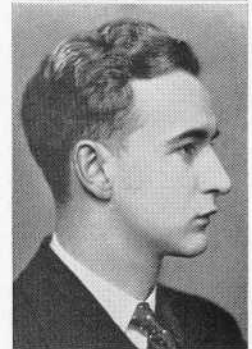
Traffic 3



MAURICE R. CARTIER

Football 2

Maurice



MEROPE A. CASCAMBAS

"Moe"

Commercial Club 2, 4

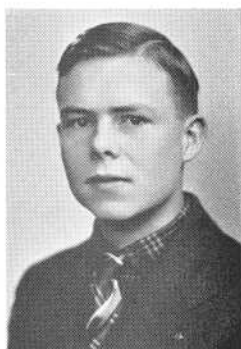


PAULINE JUDITH CASPER

Commercial Club 2, 4



1937



RICHARD GORDON CAVACA

"Dick"

Home Room Director 3

"Dick"

JOSEPH M. CETOLA

"Joe"

"Joe"

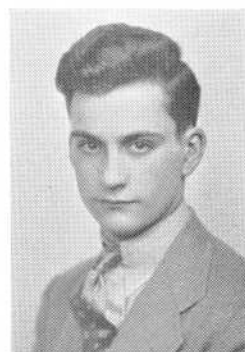
MURIEL CHACE

"Chacie"

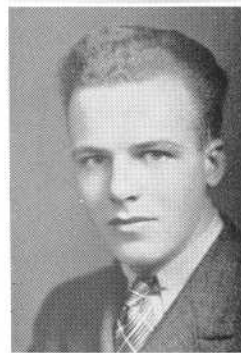


RUTH CHAPMAN

Ruth



ROBERT HENRY CHAPPELL



EDWARD M. CHAVES

"Ed" "Chevy"



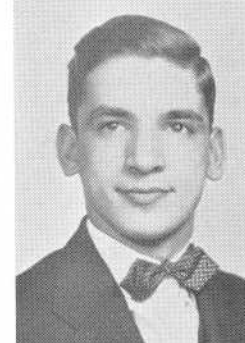
HARVEY CHENARD



EDWARD CHERRY

"Ed"

"Eddie"



1937

1937

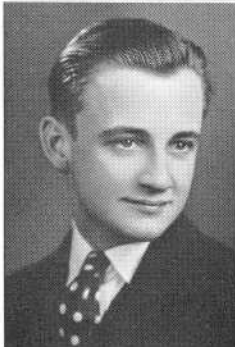


STANLEY CHOLEWA
Home Room Director 4

Stan

THADDEUS W. A. CHOLEWKA
"Ted Cole"
Band 4

6/ed 37

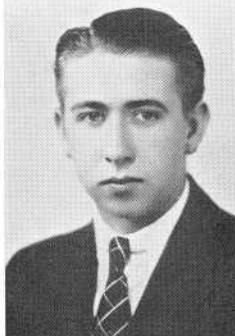


ROGER CHOUINARD
Health Club 2
Commercial Club 4

Roger

PHYLLIS P. CLARK
"Phyl"

Phyl



HOWARD W. CLARKE
"Clarkie"
Band 2, 3, 4
Commercial Club 4

Clarkie

EILEEN MAGDALENE CLIFFORD
Commercial Club 2, 4



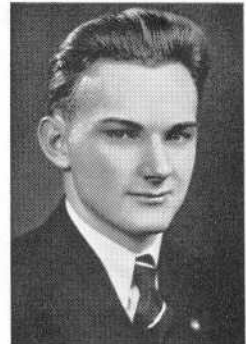
MARGARET ELIZABETH CLIFTON
"Peg" "Peggie"
Cheer Leader 4
Gym Leader 3, 4
Photographic Com.
Health Councillor 2
Commercial Club 2, 4

Peg

JOSEPHINE JUDITH CLUCK
"Jo"

Literary Club 3
Library Aid 3, 4
Vice-President 4
Dramatic Club 3, 4
Forum 4 — Chorus 4

Josephine





RUTH A. COLLINS

"Ruthie"

Commercial Club 2, 4
G. N. C. 3, 4
Volleyball 3
Gym Leader 3

Ruthie

MARY CONNON

"Scotty"

Home Room Director 1, 2

Always "Mary"



BARBARA COOPER

"Barb"

FLORENCE ANN COOPER

Gym Leader 3
Commercial Club 4

Florence



DOROTHY PAULINE CONROY

"Dot" "Editor"

Editor-in-Chief Hilltop 4
Vice-President Class 2
Class Secretary 3, 4
Dramatic Club 3, 4
Debating Team 3
Record Book Staff
Literary Club 2, 3
Library Aid 3, 4

Dot

THOMAS P. CONSIDINE

"Conny"



ADELE MARIE CORIATY

Commercial Club 2, 4

Adele

ABEL COSTA



1937



ARTHUR G. COSTA
"Shorty"

1937

JOSEPH COSTA
"Joe"



BERNICE CRAPO
"Bunny"



"Bunny"

CONSTANCE B. CRAPO
"Connie"

"Connie"



NORMA ROSE CRAPO
"Blondie"
Commercial Club 4



JAMES R. CRAY
"Bob"

"Bob"



VICTOR CROTEAU
"Vic"
Commercial Club 4

"Vic"



RITA SALETTE CRUDELE
"Letty"
Commercial Club 4





GEORGE F. CYR



ARMANDO D'ADAMO

"Warpe"

Armando



JAMES FRANCIS DARCY

"Darky" "Red"

Chorus 2, 3, 4
President 4
Track 3, 4

Jimmy



DOROTHY BRIGHTMAN DAVENPORT

"Dot"

Dot

EDWARD M. DAVENPORT

"Ed"



AVIS CUNNINGHAM

"Av"

Commercial Club 4

Avis



OMER H. DAIGLE

"Roper"

Home Room Director 1



RUTH ISABEL DASSANCE

Ruth



1937

"Beadie"

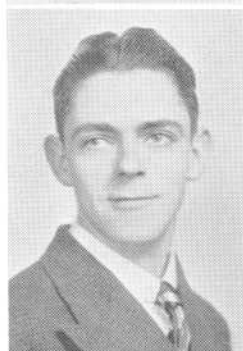


BEATRYCE DOROTHY DAVID

"Beadie"

Asst. Managing Editor Record Book
Health Councillor 2
Photographic Com.
Forum 3

BENJAMIN H. DAVIDSON



EDWARD DAVIS

"Ed"

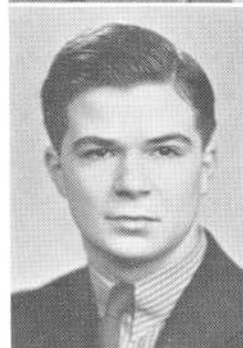
HAROLD DAVIS

"Hal"

"Hal"

ROBERT DAVIS

"Bob"



HORACE DEANE



DOROTHY JANE DEARNALEY

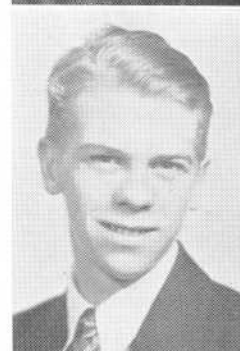
"Dot"

Commercial Club



JENNIE THERESA D'ELIA

Commercial Club 4



1937

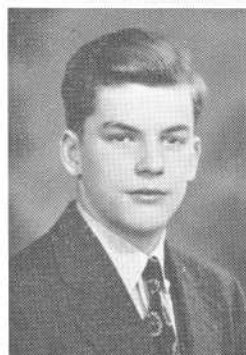


CATHERINE B. DE GRANGE

"Kay"

Home Room Director 1, 2
Design Guild 1, 2, 3
Commercial Club 4
Vice-President 3

VIRGINIA DELZENERO



MAURICE E. DEMERS

Maurice

HONORA PATRICIA DENNIHEY

"Anna" "Ann"

Commercial Club 4



LEONARD DENNIS

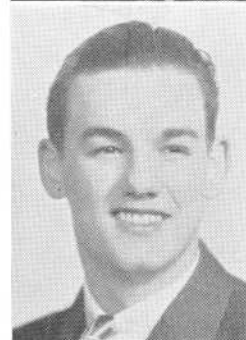
"Len"

Football 2, 3, 4
Baseball 2, 3
Varsity Club

CONCETTA MARILYN DEPAOLA

"Connie" "Skeeter"

Commercial Club 4



JOHN A. DE PAOLA

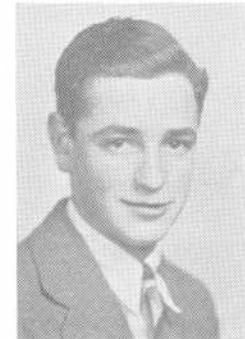
"Johnie" "Don"

DONALD ROBERT DESJARDINS

"Duck" "Butch"

Orchestra 2, 3 — Chorus 2, 3
Traffic 2, 3
Commercial Club 4
Home Room Director 1

1937





RENE O. DESMARAIS

"X"

Demmy

WILLIAM JOSEPH DEVITT

"Bill"

Football 1, 2
Varsity Club
Hilltop Staff 3, 4
Pin and Ring Com.



HELEN WALLIS DEXTER

Helen

MARY PATRICIA DOHERTY

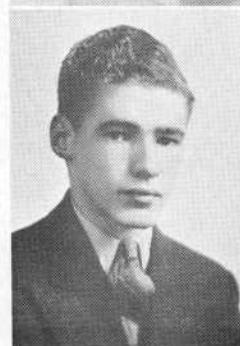
"Sis"



RUTH DOIGE

"Rufus" "Ruthie"

Commercial Club 2, 4

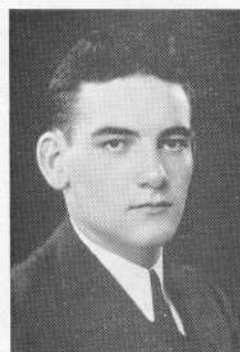


LAWRENCE DOWLING

"Larry"

VINCENT FRANCIS DOWLING

"Red" "Vinny"



1937

Bill



JOHN VINCENT DRADDY

"Skip"

Traffic 2, 3, 4
Vice-President Class 3
Dramatic Club 3
Forum 4

ANN LILLIAN DRISCOLL

Home Room Director 2



HARRIET PRISCA DRISCOLL

Commercial Club 2, 4
Gym Leader 3
Chairman, Pin and Ring Com.
Dance Committee

Harriet

ANTOINETTE DUBE

"Toni"

Commercial Club 4
Volleyball 2



ANNA DUFFY

Circulation Mgr. Hilltop 4

Anna Duffy

JOHN W. DUFFY

"Duff"

Home Room Director 2

Duff

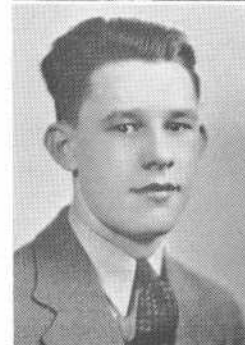
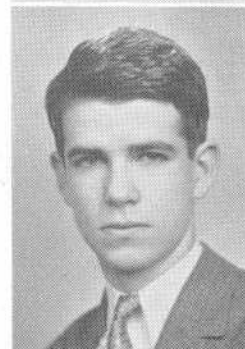


LUCILLE IRENE DUFRESNE

Commercial Club 4
Chorus 4

RENE F. DUGAL

Commercial Club



1937



BARBARA DUNHAM
"Barb"

"Barb"

GRACE MARIE DUNN

Home Room Director 3, 4
Library Aid 3, 4

Grace



PAUL DUNN

Home Room Director 4
Orchestra 2, 3, 4
Band 2, 3, 4
Track 2, 3

Paul

EDNA DURAND



MARTHA DURAND

"Petunia"
Commercial Club 4

Martha

GENEVIEVE DUTRA

"Tardy"



PAUL BRIGGS DWELLEY

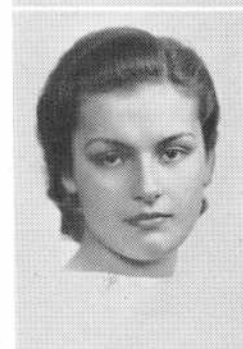
Commercial Club 4

EILEEN PATRICIA DWYER

"Shirley" "Ei"
Pin and Ring Committee
Commercial Club 2, 4
Gym Leader 3, 4
Cheer Leader 4

Eileen

1937





JOHN EARNSHAW
"Johnny"

Pearl Irene Ehrenhaus
PEARL IRENE EHRENHAUS

Orchestra 2, 3, 4
Assistant Concert Master 2, 3
Concert Master 4
Home Room Director 2

1937



RUTH VIRGINIA ELDER

Chorus 2, 3, 4

Ruth

ANNA B. ELLISON

"Annabelle" "Bismark"

National Thespians 4
Financial Sec. D. C. 4
Dramatic Club 3, 4

Anna

NANCY ELIZABETH ENTWISTLE

Asst. Business Mgr. Record Book
Hilltop Staff 3—Cir. Mgr. 4
Health Councillor 2
G. N. C. 3, 4



ELLEN DOROTHY FAGAN

Commercial Club 2, 4

Ellen

VIRGINIA FAHEY

"Ginny"

Orchestra 2



Ginny

PHOEBE L. FANTOM

"Pheb"

Commercial Club 4
Health Councillor 2

Pheb





IDA FARIAS

Commercial Club 4

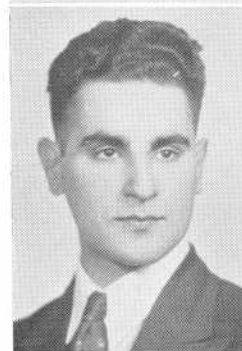
Ida



ALYCE ELEANOR FARYNIARZ

Chorus 3, 4—Gym Leader 4
Business Mgr. Record Book
Basketball 3—G. N. C. 3, 4
Senior Advisor G. N. C. 4
Home Room Director 4
Advisory Board
Volleyball 3, 4

Alyce



JACOB PHILIP FELDER

"Jim" "Jake"

Traffic 2, 3—Captain 4
National Thespians 4
Dramatic Club 3, 4
Forum 3

Jim



AMELIA FERREIRA

"Emily"

Amelia

EVELYN FARRAR

Commercial Club 2, 4
Gym Leader 4



ANNE FEINBERG

Home Room Director 2
Commercial Club 4

Anne

NORMAN RUSSELL FENNELLY



EDWARD FERREIRA

"Ed" "Pete"

Treasurer Varsity Club 4
Home Room Director 1
Football 3, 4



1937



MARY A. FERREIRA

"Boots"

Commercial Club 2, 3, 4



LORETTA FILLION

"Filly"

Commercial Club 2, 4

Loretta Fillion



JOHN R. FLANAGAN

"Johnny"



KATHLEEN ANN FLYNN

"Kay"

Home Room Director 1
Sanco 2

Kay

AARON FILLER

Literary Club 2, 3
Chorus 2, 3, 4—Band 3, 4
Orchestra 3, 4
Dramatic Club 3, 4
National Thespians 3, 4
Record Book Staff



RAYMOND FITZGERALD

"Ray"

Football 2, 3, 4
Basketball 2
Track 2, 3, 4—Capt.
Pres. H. R. Directors 4
Varsity Club 2, 3, 4

Ray



RAYMOND FLETCHER

"Ray"

"Ray"



THOMAS FLYNN

"Tom"



1937



RICHARD E. FOGWELL

"Dick"

"Dick"

BERNADETTE FOLSTER

"Benny"

Commercial Club 2, 4
Orchestra 2, 3, 4



ANNETTE NATHALIE FORCIER

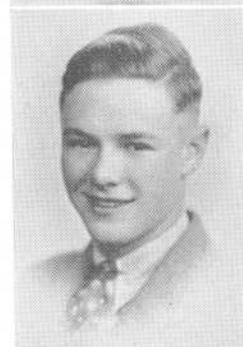
Pin and Ring Committee
Home Room Director 2
Commercial Club 4

Annette

EDWARD M. FORCZYK

"Ed"

Home Room Director 2
Traffic 2



CLIFFORD FORD

"Cliff"

ALFRED FORGETTE

"Freddie"

Football 2, 3—Captain 4
Basketball 2, 3, 4
Varsity Club

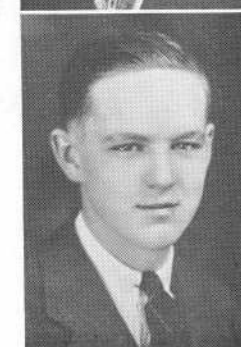
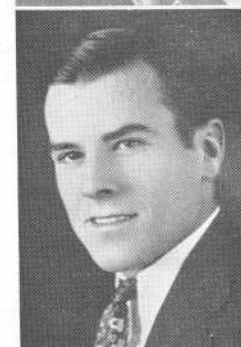
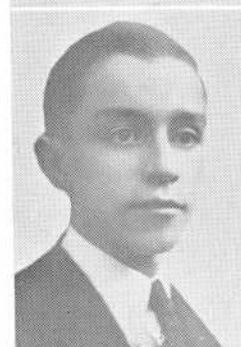


STACIA FRANKOWICZ

Commercial Club 2, 4

"Stacia"

WILLIAM FREDRICKSON



1937



LAWRENCE BROWN FRIAR

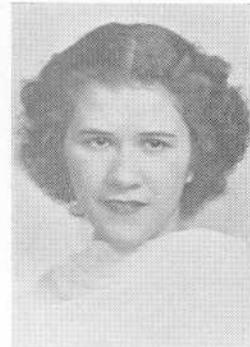
Traffic 2
Dramatic Club 4

Lawrence

1937

HELEN SHIRLEY FRIEDMAN

Commercial Club 2, 4



VIOLA GADSBY

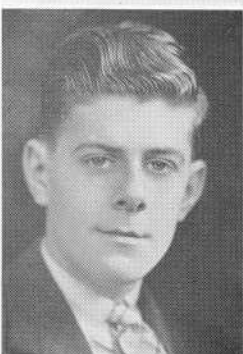
"Vi"

Commercial Club

LEO GAGNON

Band 2, 3, 4

Leo



ROBERT C. GAGNON

"Bob"

Commercial Club 4
Chorus 4

Bob

MIRIAM GAMMONS

"Vi"

Miriam



RUTH MIRIAM GAMSON

"Ruthie"

Commercial Club 2, 4
Health Councillor 2
Library Aid 3, 4
Hilltop Staff 4

Ruth

GERTRUDE C. A. GARDELLA





JOHN HENRY GARRITY

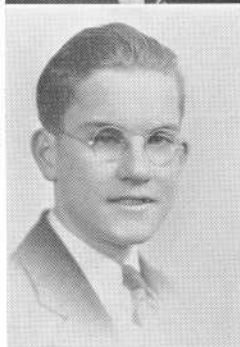
Health Club
Home Room Director 3, 4
Commercial Club

1937

LORETTA CATHERINE GASTALL



ARMAND GAUTHIER



BENOIT G. GAUTHIER

"Ben"
Commercial Club 4



DAVID J. GAUTHIER

"Dave"



GERARD GAUTHIER

"Jerry"



JUNE ANITA GESNER

June



JOHN GIANOTTI

Home Room Director 2
Orchestra 2, 3, 4
Business Mgr. 4
Assistant Concert Master 4

John





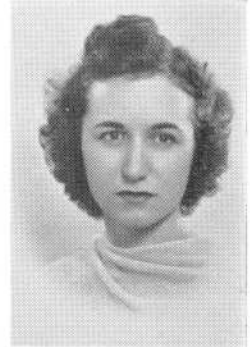
CATHERINE VIRGINIA GIBBONS
"Cath"

Hilltop Staff 4

1937

DORIS JEAN GIBLIN

Chorus 4
Commercial Club 4
Home Room Director 3, 4



EDWARD GIBLIN, JR.
"Gibby"

Doris



Ed

MARJORIE ANNE GIBLIN

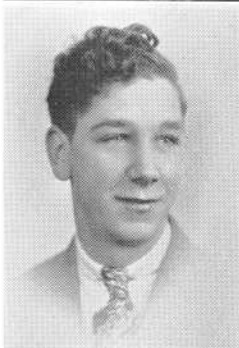
"Marge"
Library Aid 3, 4
Advisory Board

Marge



JAMES A. GILLET

Traffic 2, 3, 4—1st Lieut.
Commercial Club 2, 4



MARGARET ANNE GILLIGAN

Commercial Club 4



LILLIAN GINSBERG

Commercial Club 2, 4
Orchestra 2, 3, 4



MORRIS GISHERMAN





SHIRLEY GITTLEMAN

Shirley

CHESTER JAMES GOODWIN

"Chet"

Basketball 2, 3—Capt. 4
Home Room Director 2
Football 2, 3, 4
Varsity Club

Chet



ANDREW HENRY GOSCIMINSKI

"Andy" "Gus"

Baseball 4

Andy

JANICE ELIZABETH GOTHAM

"Jan"



CLORINDA BLANCHE GRAGNANI

Commercial Club 4

Clorinda

ANGELA G. GRAHAM

"Angie"

Home Room Director 1
Sanco 2

Angela



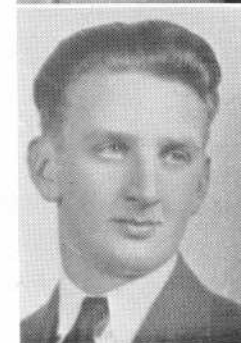
JOHN GRANDFIELD

HAROLD GRANTHAM, JR.

"Bud"

Home Room Director 4

1937





MARIE AUGE GUAY

Commercial Club 2, 4
Library Aid 3, 4
Sanco 2



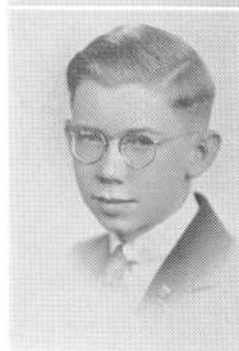
VENETTA C. GREENSLADE



DOROTHY E. GRIFFAULT

"Dot"

Home Room Director 2
Commercial Club 4



ERNEST CLIFFORD GRIMES

HELEN LAURA GROSS

Commercial Club 2, 4

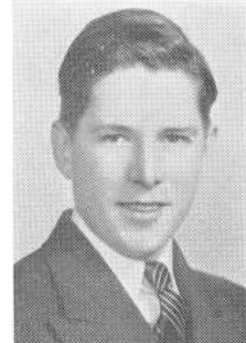
JOHN C. GREENE



LAWRENCE J. GREENWOOD

"Larry" "Greeny"

Larry



RUTH GRIFFIN

"Ruthie"

Home Room Director 2
Commercial Club 4
Gym Leader 3, 4



1937



YVONNE GUIMOND

"Vonny"

Home Room Director 4



CECELIA J. GURGON

"Cee"

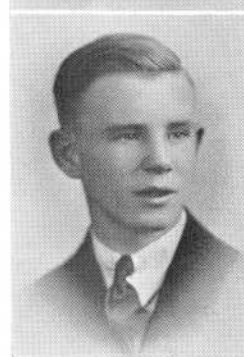
Commercial Club 2, 4



LOUISE G. HALL

Orchestra 3, 4
Chorus 2, 3, 4

Louise



MAURICE HALLISEY

"Mickey"

RUTH GUNNING

"Ruthie"

Literary Club



MARY E. HAGGERTY

Home Room Director 2
Commercial Club 4

Mary



NORMAN HALLAS

"Norm"

Norm



RUTH GOSS HALLOWS

"Ruthie"

Literary Club 4
Commercial Club 4



1937



EDWARD RAYMOND HALPIN

"Eddie" "Knutie"

Asst. Student Mgr. Football 3
Varsity Club—Traffic 2
Student Manager 4



JOHN A. HARLEY

Asst. Baseball Mgr. 3



ANNA CECELIA HARRINGTON

Commercial Club 4
Chorus 4



EDWARD JOSEPH HARRINGTON

"Ed" "Eddie"

Home Room Director 2, 4
Photographic Committee
Tennis 3—Captain 4

GERALD JOHN HARRINGTON

"Hank"

1937

Eddie

CONSTANCE MARIE HANLEY

"Connie"

Design Guild 2, 3



John

ELIZABETH ANN HARNEY

"Betty"

Commercial Club 4
Gym Leader 4



CATHERINE KAY HARRINGTON

"Kay"

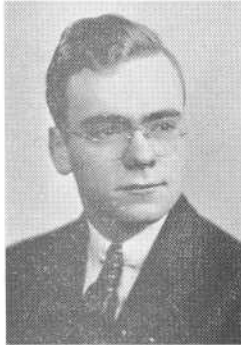




GERALDINE HARRINGTON
"Gerry"

Gerry

DOROTHY FRANCES HART
"Dot"



HERBERT W. HART

Herb

PRISCILLA DAVIS HART

Home Room Director 2, 4
National Thespians 3, 4
Dramatic Club 3, 4
Library Aid 3, 4
Literary Club 2

Priscilla

ELIZABETH HAYDEN
"Betty"

Betty

ANNE HAYES

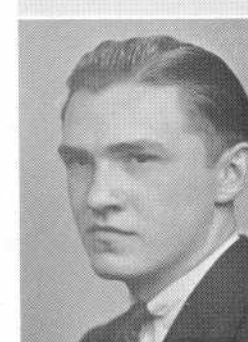
Commercial Club 3, 4
Gym Leader 3, 4

VIVIAN HAZARD

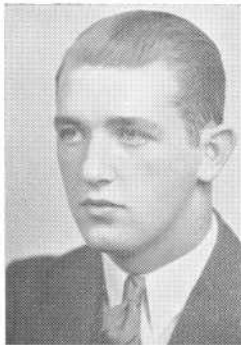


JOHN JOSEPH HEFLIN
"Hef"

Chorus Librarian
Chorus 2, 3, 4



1937

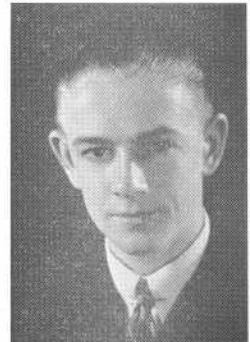


EDWARD HENRYS

"Ed"

Pin and Ring Committee
Home Room Director 3
Record Book Staff 4
Class President 2, 3
Basketball 1, 2, 3
Football 2, 3, 4
Varsity Club

ROBERT VERNON HEYWORTH



MILDRED E. HICKS

Commercial Club 4



ELIZABETH MARY HICKEY

"Betty"

PHYLLIS GERTRUDE HIGHAM

Health Councillor 2
Library Aid 3, 4



"Phyl"

HELEN COSTELLO HINCHEY

"Heddy" "Hinch"

Secretary Health Club 2
Library Aid 2, 3, 4
Advisory Board



JEAN HINCHEY

"Jean"

"Hinch"



RITA HINDLE

Home Room Director 2, 3

"Reer"



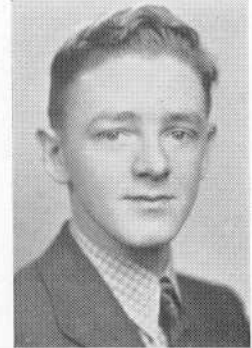
1937



JOHN WILLIAM HOAR
"Buck"

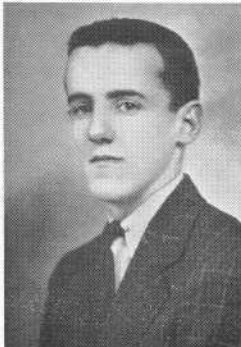
Buck

EVERETT HOLIDAY
"Red"



MARGUERITE ANNE HOLLAND
"Marge"
Commercial Club 4
Gym Leader 3

RUTH E. HOLLAND
Home Room Director 4
Commercial Club 4



GERALD J. HOLLERAN
"Jerry"

MARY GERALDINE HOLLERAN

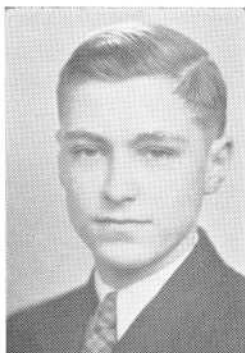


EDWARD HORDERN
"Eddie"

ELAINE HELEN HOWAYECK
Commercial Club 2, 4
Library Aid 3, 4



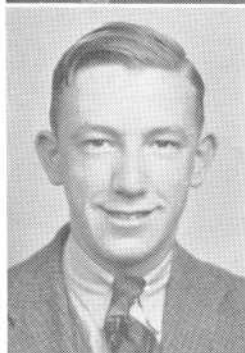
1937



ALFRED HOYLE

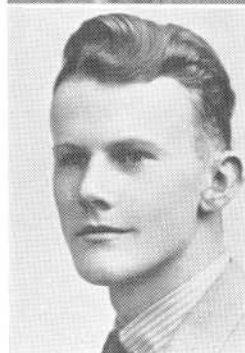
"Scotty"

Traffic 2
Design Guild 3



EDMUND W. HUSSEY

"Ed" "Huss"



ARTHUR IRONFIELD

"Art"



ELLIOTT ISSERLIS

"Sammy"

Health Club 2
Commercial Club 2, 3
Home Room Director 2, 3

MARIE G. HUGHES

Library Aid 3, 4

marie



KATHERINE DOROTHY HYSLOP

"Kay"

Commercial Club 4
Gym Leader 4

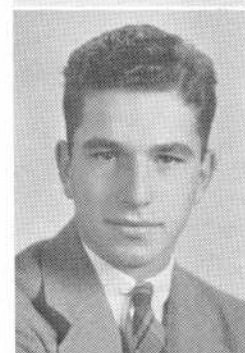
"Kay"



ERNEST GEORGE ISRAEL

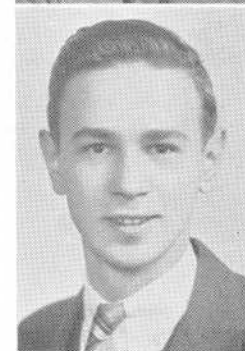
"Ernie" "Izzy"

Football 3
Basketball 2, 3, 4
Dramatic Club 3, 4
Home Room Director 2, 4



WALTER IVANCIN

"Walt"



1937



MARY IWANSKA

Commercial Club 2, 4



ELSIE JEAN

"Checker"

Band 4



MAX JOHNSON



KALIL S. KALIL

Traffic 2, 3—1st Lieut. 4

BARBARA V. JACKSON

"Babs"

Chorus 3, 4

Babs

MIRIAM JETTE

Home Room Director 2

Health Councillor 2

Commercial Club 2

Traffic 2

Chorus 4

Miriam

MADELYN JUDGE

"Mal"

Mal

ESTHER KAPLAN

Design Guild 2, 3

Dramatic Club 4

Literary Club 3

Gym Leader 3

1937





ELEANOR KAY

Home Room Director 3
Hilltop Humor Editor 4
Hilltop 3

Eleanor

WILLIAM ANTHONY KEEFE

"Bill" "Trix"



IRENE G. KELLEY

"Renie" "Kel"

Vice-Pres. Commercial Club 4
Home Room Director 4

CATHERINE ANNE KELLY



RITA MARGARET KELLY

THOMAS EDWARD KENNEDY

"Tom"

Tom

MARION G. KENNEDY

Commercial Club 4

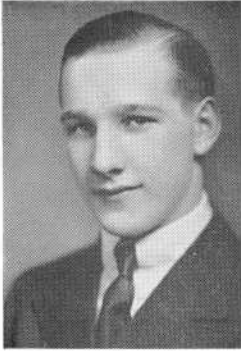


EDNA F. KENNEY

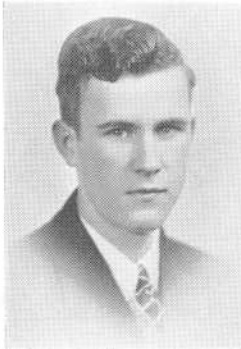
"Ed"



1937



DAVID KIDD



MAURICE KING
"Kingie"



KATHERINE KOBELECKI
"Kay"
Commercial Club 4



J. LAWRENCE KNIVETON
"Larry"

MARGUERITE KILEY
"Marg"
Commercial Club 2, 4



EDWIN GEORGE KISPERT
Library Aid 3, 4
Health Club 2
Band 2

Eddie



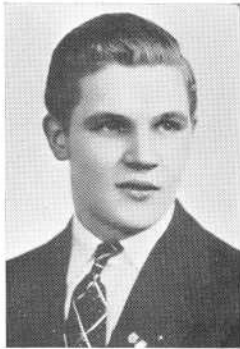
JOANNE C. KONARSKA
Commercial Club 3, 4



STELLE S. KRUPA
Commercial Club 2, 4



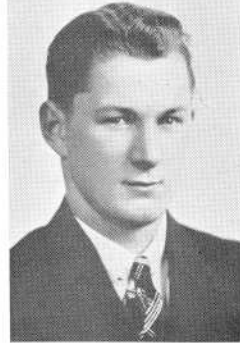
1937



WALTER M. KUSS
"Cookie"



MARGARET THERESA LAMBERT
"Peg" "Peggie"
Commercial Club 2, 4

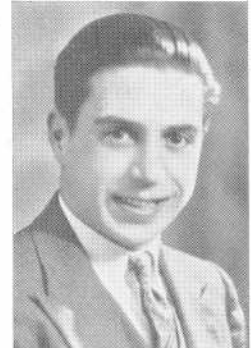


OLIVA LAPRISE
"Husky"
Commercial Club 2, 4



MARCELL ALBERT LAVIGNE
"Pro"
Home Room Director 4
Commercial Club 4
Gym Leader 4
Sanco 2

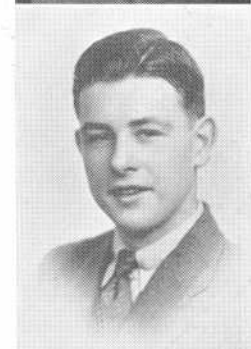
ALFRED LADEIRA
Commercial Club 2



LOMER LAPOINTE
"Lo"
Home Room Director 2
Glee Club 1, 2, 3, 4



EDWARD LARRIVEE



MARIE PAULLE LAVOIE
Home Room Director 1, 2
Commercial Club 2, 4



1937



DORIS LAWRENCE
"Dotty"



ROBERT LECLAIR
"Bob"



JOSEPH LEITE
Commercial Club 4



HELEN MARIE LENNON

VERNA MARION LEACH

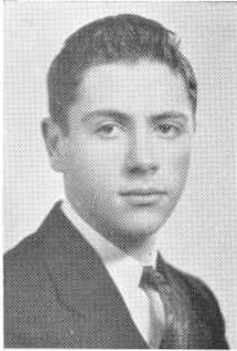
ARTHUR J. LEDOUX
"Art"

OLIVIA LEITE
"Robin"
Commercial Club 2, 4

IRMA LEONARD

1937





LORENZO G. LEVASSEUR

"Larry"

Home Room Director 2, 3, 4
Commercial Club 4



SELMA LEVINE

"Sim" "Sammy"

Commercial Club 2, 4



HELEN DOROTHY LIMA

Home Room Director 2
Gym Leader 2
Sanco 2



LILLIAN LINCOLN

"Blackie" "Lil"

Dramatic Club 3—Sec'y 4
Home Room Director 2, 4
Commercial Club 2, 4
S. A. A.—Sec'y 2

MARION DOROTHY LONGSON

Library Aid 3, 4
Gift Committee
Volleyball 4

marion

1937

MARIE ISABELLE LEVESQUE

"Issy"

Commercial Club 4



JAMES H. LEWIS

"Jimmy"

Jimmy



JOHN OLIVEIRA LIMA

"Johnny"

Johnny





CATHERINE HARRISON LORD

Catherine

JAMES THOMAS LORD

"Lordy"

Home Room Director 2
Commercial Club 2, 4
Choir 2



VINCENT G. LORD

"Lordy"

RITA ANN LOUGH

Home Room Director 1, 2, 3
Gift Committee 4
Dramatic Club 4



SYLVIA ZOLA LUBINSKY

"Syl" "Duchess"

Library Aid 3, 4
Record Book Staff
National Thespians 3, 4
Dramatic Club 3, 4
Mistress of Ceremonies 3
President 4

Sylvia

BERTHA LUCOVE

"Bert"

Commercial Club 4



HELYN JOHNSON LYNCH

Home Room Director 2
Record Book Staff
Gym Leader 3, 4

WINIFRED G. LYNN

"Winnie"

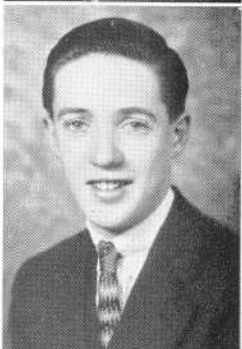
Commercial Club 1, 3
Gym Leader 3

1937





WILLIAM LYONS
 "Bill"
 Home Room Director 2, 3



CHESTER W. MAHON
 "Chet"
 Electrical Club 2, 3, 4
 Library Aid 3, 4



CECELIA GERALDINE MALONE
 "Sis"
 Gym Leader 4
 Basketball 3
 Volleyball 3
 G. N. C. 3, 4



CLAIRE GERALDINE MALVEY
 Gym Leader 4

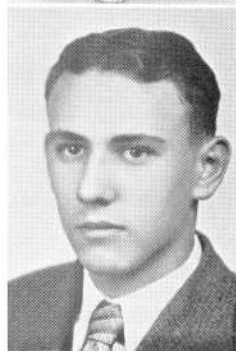
Claire

ANDREW MANCHESTER
 "Drew"

HELEN A. MAHATA
 Commercial Club 4
 Sanco 2

ETHEL ANTHONY MAKIN
 "Eth"
 Commercial Club 4

L. RITA MALONE
 "Reet"
 Home Room Director 2
 Commercial Club 2, 4
 Gym Leader 3, 4
 G. N. C. 4



1937



FRANKLIN MANCHESTER

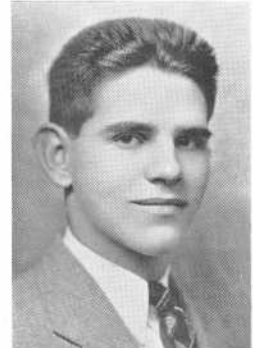
1937

NORMAN C. MANNING

"Bud"

Dance Committee 4
Basketball 3
Football 3, 4
Chorus 2, 3

"Bud"



THOMAS F. MANNING

"Tommy"

Tommy

MARY ELIZABETH MANNION

"Babe"

Pin and Ring Committee 4
Commercial Club 2, 4
Dance Committee 4
Cheer Leader 2, 3
Record Book Staff
Chorus 2



AMELIA MARQUES

"Amy"

Commercial Club 4
Gym Leader 4
Traffic 2, 3, 4



ALICE RICHMOND MARR

"Peggy"

Dramatic Club 3, 4
Chorus 4



JOHN E. MARSHALL

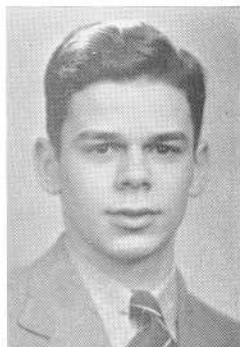
Home Room Director 1
President Class 1

John

NORINE A. MARSHALL

Norine





CHARLES MARTIN, JR.
"Lefty"

VIOLA BERTHA MARTIN
"Vie"
Commercial Club
Gym Leader 4

VIOLET LOUVAIN MARTIN
Home Room Director 1
Commercial Club 4

BERTHA C. MARTINI
Commercial Club 4
Health Club 2

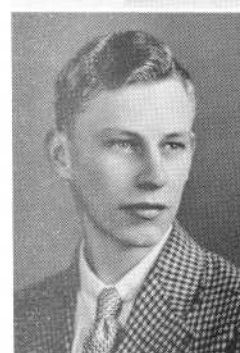
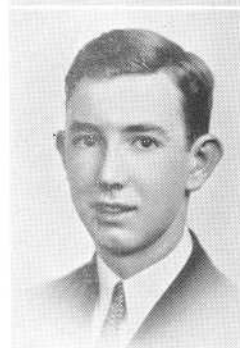
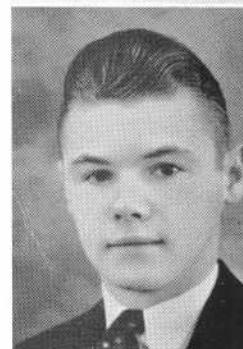
JAMES J. MARUM
"Jimmie"
Electrical Club 2, 3, 4

JOSEPH MARUM
Electrical Club 4
Traffic 4

FRANK R. MASON
Commercial Club 4

FEYEZ HASSOUN MASSOUD

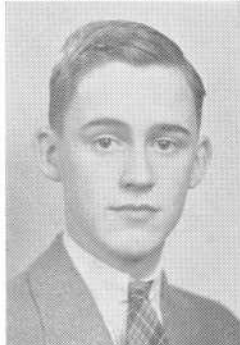
1937





LIBERATO ALBERT MAURETTI

"Porky" "Lib"
Electrical Club 2, 3—President 4
Record Book Staff



JOHN JAMES McAVOY

"Joe" "Mac"
Hilltop 3—Associate Editor 4
Asst. Bus. Mgr. Record Book
Home Room Director 4
Vice-President Class 4
Advisory Committee 4

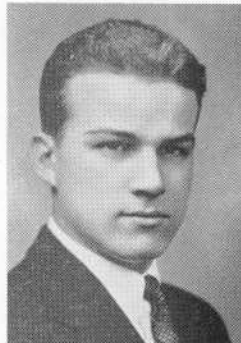
CLARISSA MAYNARD

Commercial Club 4
Home Room Director 2



EUGENE LANGLEY McCARTHY

"Mac"
Advisory Committee
Football 3



MARGARET DOLORES McDONALD

"Peg"
Commercial Club 2, 4



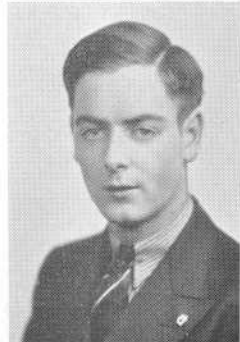
MALCOLM McFARLAND

"Mac"
Dramatic Club 3, 4
Orchestra 2, 3, 4
Traffic 2, 3, 4
Baseball 2, 3
Band 2, 3, 4



EDWARD FRANCIS McGRADY

"Mac"



JOSEPH FRANCIS McGRADY

"Joe"
Home Room Director 2
Commercial Club 3, 4



1937



HELEN PATRICIA McGRATH

"Mac"

Home Room Director 2, 3, 4
Commercial Club 2, 4
Gym Leader 3, 4
Basketball 3
G. N. C. 3, 4

MARY CATHERINE McGUIRE

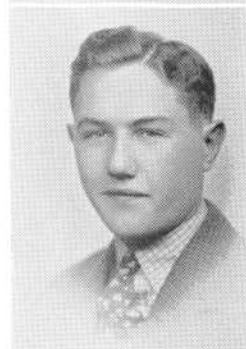
"Mickey"

Literary Club 3, 4
Forum 2, 3

Mary

JOHN McKNIGHT

"Mac"



DOROTHEA HAYES McMAHON

"Dot"

Advisory Committee



EVELYN CLAIRE McMAHON

"Ev" "Mac"

Home Room Director 4
Commercial Club 2, 4
Dance Committee 4
G. N. C. 3, 4
Basketball 3

Dot



MARGARET McNULTY

"Marg"

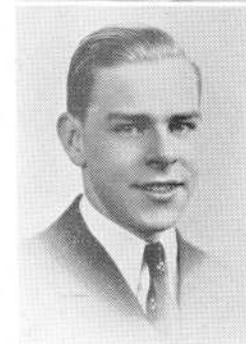
Basketball 3
Volleyball 4
G. N. C. 3, 4

CORNELIUS E. McMULLEN

"Mac" "Neil"

Dramatic Club 3, 4
Forum 2, 3

Marg



MILDRED McNAUGHTON

"Millie"

Gym Leader 3
Commercial Club 2, 4



1937

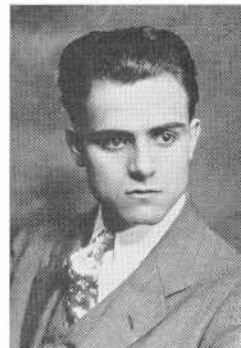


LEONARD MEAGHER

1937

HUMBERTO MEDEIROS

National Thespians 4
Record Book Staff
Dramatic Club 4
Library Aid 4
Forum 4



JOHN MEDEIROS

Humberto



ANIBAL T. MELLO

"Count"

Band 2, 3—Custodian 4
Home Room Director 2
Traffic 3



AURELIO MELLO

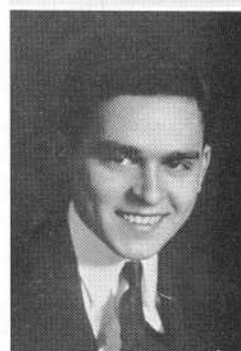
Traffic 3



CHARLES L. MELLO

"Speed"

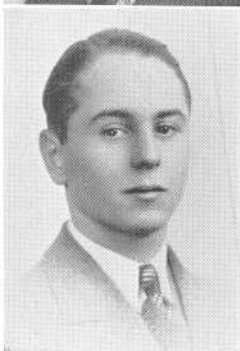
Commercial Club 4
Forum 4



GILBERT MELLO

"Duke"

Commercial Club 3, 4

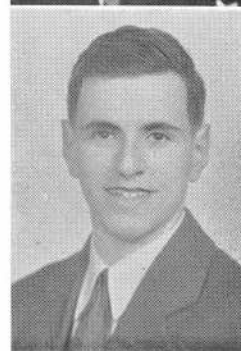


HERMAN MELLO

"Scoop"

Hilltop 4

Scoop





JAMES MELLO

1937

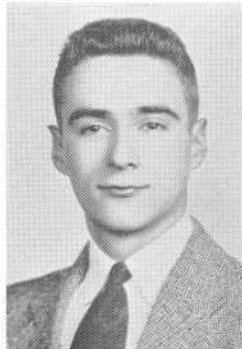
MANUEL MELLO



WILLIAM MELLO

"Bill"

Commercial Club 4



OTTELIA MENDES

"Tillie"

Commercial Club



ALICE MELNICK

"Al"

Commercial Club 4

Basketball 3, 4

Gym Leader 4

G. N. C. 3, 4



DOROTHY MERETSKY

"Dot"

"Dottie"



ELAINE PATRICIA MESSER

"Pat"

Commercial Club 4

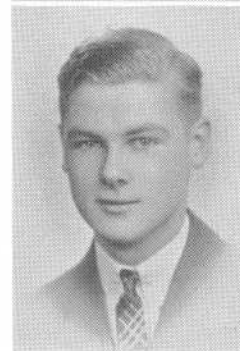
Gym Leader 4

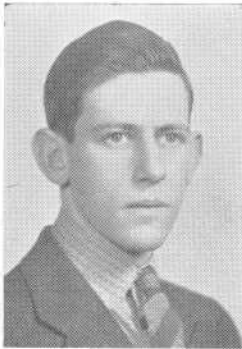
Volleyball 4



OSWALD JAMES MESSIER

Ozzie



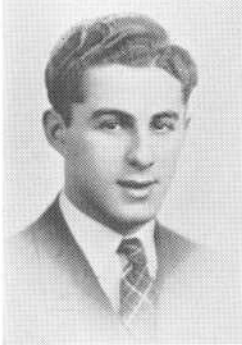


WILLIAM MEYER

"Monk"

Basketball 3, 4
Football 4

Bill



SIDNEY MILLER

"Sid"



ASPA MITCHELL

Commercial Club 2, 4



HELEN MOLINSKI

Health Councillor 2
Commercial Club 4
Gym Leader 3, 4

EDMUND C. MITCHELL

"Mitch"

Mitch

JOSEPH L. MONAGHAN

"Moe"

Dance Committee 4

"Moe"

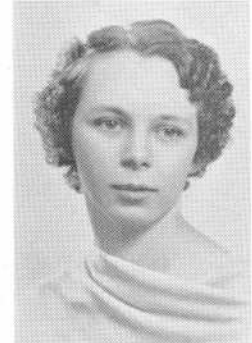
1937



DONALD B. MILLER

Gym Leader 3, 4
Track 3, 4

"Don"



GRACE MYRTLE MILLS





HELEN ANN MONKS

Girls' Numeral Club 3, 4
Home Room Director 2
Traffic 2, 3, 4
Basketball 3
Orchestra 2

Helen

CLAUDE MORGAN



CONSTANCE L. MORGAN

"Connie"

Commercial Club 2, 4

Connie

WILLIAM R. MORRISS



JOHN MOSLEY

"Moe"

HARRY MOSS

"Mossy"



DORIS ANNA MOWBRAY

"Dot"

Commercial Club 4

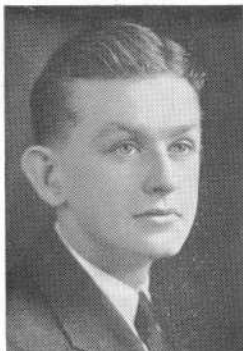
MARY ARLINE MULCAHY

"Pat"

Commercial Club 4



1937



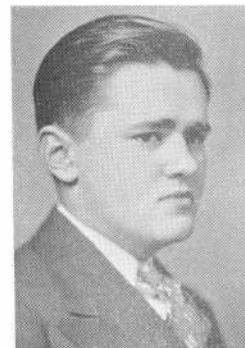
CARL W. MULVENY

1937

EDWARD F. MURPHY

"Ed" "Murph"

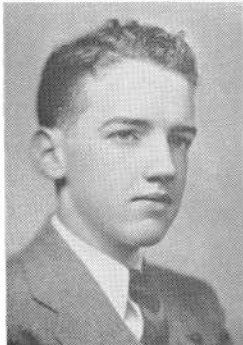
Home Room Director 1, 2, 3, 4
Gift Committee—Chairman
President S. A. A. 4
Health Councillor 3
Debating Team 3



EUGENE FRANCIS MURPHY, JR.

"Gene" "Murph"

Boy Councillor S. A. A. 4
Gift Committee



Gene

CHARLES ROBERT MURRAY

Commercial Club 4
Band 3, 4



ELIZABETH MYCOCK

"Betty"



MYRETTE NADEAU

Home Room Director 2, 3
Dramatic Club 3, 4



BEATRICE MARY NATALY

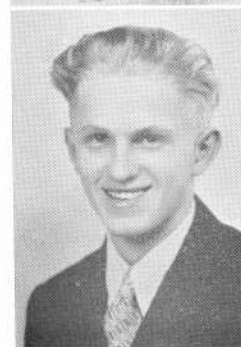
Commercial Club 2, 4



JOHN NAYDA

"Pete"

Commercial Club 3, 4





CHARLES E. NELSON
Electrical Club 2, 4

1937

PAULINE A. NELSON



DOROTHEA NEWTON
"Dot"
Library Aid 3, 4
Gym Leader 3
Home Room Director 4

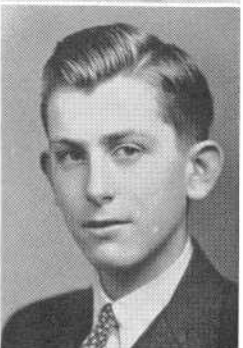
ELEANOR RUTH NICHOLS
"Nicky"
"Nicky"



SHIRLEY NICHOLS
"Bunny"

CATHERINE BERNADETTE NOLAN
"Bernie"

Bernie



JAMES PATRICK NOLAN, JR.
"Jimmie"
Commercial Club 4

ALLEN NORMAN
"Al"
Baseball 4

"Al"





ROBERT NORMAN
"Bob"

"Bob"

THELMA NOURSE



DAVID RAE NOWELL
"Dave"
Home Room Director 3

MILDRED NUTTALL
Home Room Director 1



EDWARD O'BRIEN
Commercial Club 3, 4
Forum 4
Dramatic Club 4
Sanco 2

CATHERINE F. O'CONNELL
"Kay"
Commercial Club 2, 4

"Kay"

SADIE O'CONNELL
"Sally"



MARGUERITE ANNE O'CONNOR
"Marg"

Advisory Committee—Chairman 4
Home Room Director 2, 3, 4
Editor-in-Chief Record Book

Marg



1937



JOHN JOSEPH O'HEARN

"Jim"

Band 2
Football 3

1937

LAURA TAVARES OLIVEIRA

Sanco 2



JAMES DENNEN O'NEIL

"Jim"

Band 2
Football 3



Jim

TERESA FRANCES O'NEIL

"Terry"

Commercial Club 2, 4
Gym Leader 3



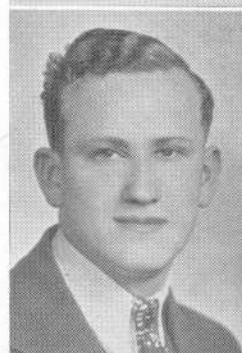
KATHLEEN M. M. O'NEILL

"Kay"



MAURICE OSTROVSKY

"Murrie"



GEORGIANA PACHECO

"Georgie"

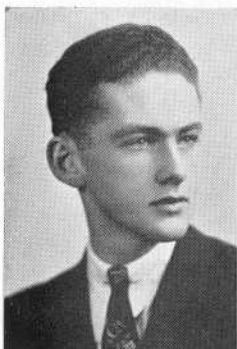


RUTH JUNE PACHECO

"Ruthie"

Commercial Club 2, 4





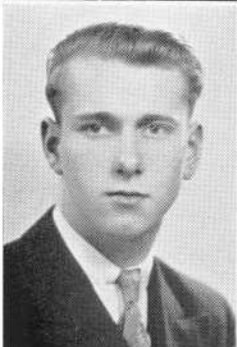
HOWELL MANLEY PALMER, JR.
 "Bud" "Buddie"

1937

F. ARTHUR PARKHURST



MILTON W. PEARCE



EDWARD PEARSON, JR.

"Zip"

66 "Zip" 99



MARIA A. GOMES PEDRO

Commercial Club 4



CONCORD JULIETTE PELLETIER

Commercial Club 4

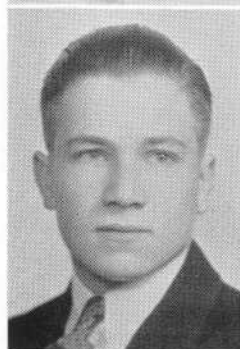


EDWARD M. PEREIRA

Electrical Club 2, 3, 4
 Orchestra 2, 3, 4
 Health Club 2
 Advisory Board



FRANK J. PEREIRA, JR.





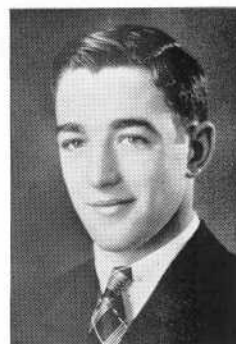
WILLIAM PERKINS

1937

HUGO DUBUQUE PERRON

Chorus 3, 4

Hugo



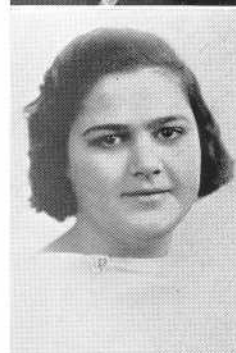
BELLA TAVARES PERRY

"Billie"



EMMA PERRY

Home Room Director 2, 3



JAMES PERRY

Jim



LORETTA D. PERRY

Commercial Club 2, 4
Gym Leader



HELEN GLADYS PETTINE

"Pet"



EDWARD ANDREW PHILLIPS

Home Room Director 2, 3
Commercial Club 4

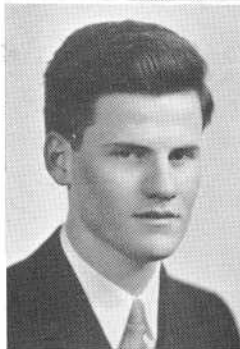




RAE PHILLIPS

"Raesy"

Dramatic Club 4
Commercial Club 2, 4



CHARLES HENRY PILLSBURY, JR.

Home Room Director 2, 4
National Thespians 4
Dramatic Club 3—Call Boy 4

Charles

ARTHUR P. PIMENTAL

"Art" "Pim"

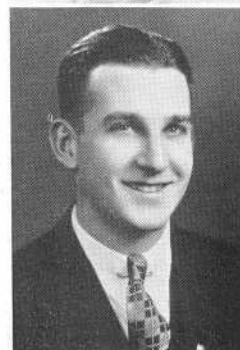
Football 2
Basketball 2, 3
Dramatic Club 3

Art



THERESA JULIENNE PINARD

Commercial Club 4



ALBERT POIRIER

"Al"

Band—Custodian 2, 3
Band—Vice-president 3, 4
Orchestra 2, 3, 4

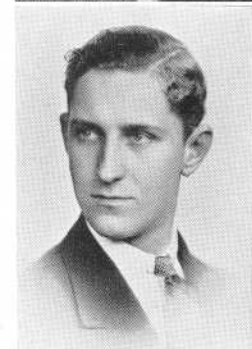
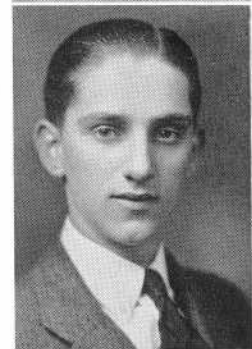
ROBERT PLUMMER

"Bob"



HELEN J. PIKOR

Commercial Club 4



ALBERT PONTIFICE

Traffic 3
Library Aid 3, 4

"Al"

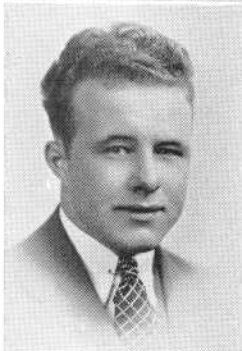


1937



ELSIE PONTIFF

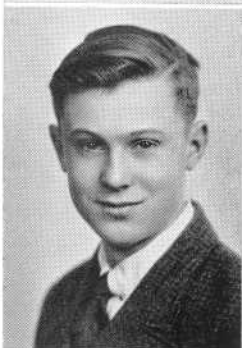
ERNEST PONTIFF



CLIFFORD POOLE
"Kickie"

MARY ELIZABETH POTTLE

Commercial Club 2, 4
Dramatic Club 4



CHARLES L. POTTS
"Charlie"

TED PRZEWOZNIK

Commercial Club 2, 3, 4



ISOBEL RADOVSKY
"Billie"

Billie

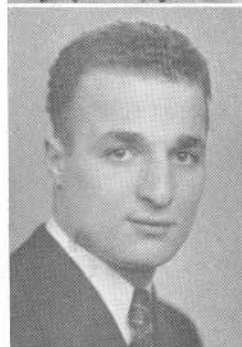
MARY G. RAFFERTY



1937



HENRY F. RAPOSA
Health Councillor 2



RICHARD PETER RASHED

"Dick"

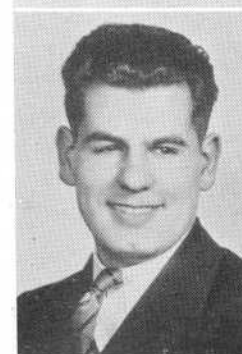
Home Room Director 2
Forum 2
Traffic 1, 2
Commercial Club 4
Football 2, 3, 4



ROSE DOROTHY REDER

"Rosie"

Commercial Club 2, 4
Gym Leader 4
Design Guild 2, 3
G. N. C. 3, 4



SIDONIO PERRY REIS

"Cido"

Orchestra 1, 2, 3, 4
Band 3—Manager 4

HOWARD CALVIN RENFREE

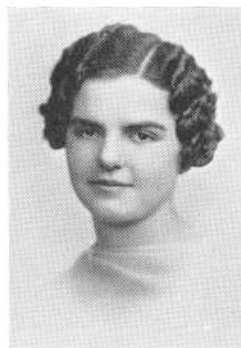
"Howie"

Home Room Director 2, 3, 4

"Cido"

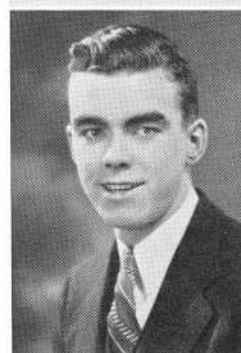
Howie

1937



MARY RAPOSA

Commercial Club 4



GERALD REAGAN

"Gerry"

Football 3, 4
Basketball 3, 4
Secretary Varsity Club 4



HELEN REID





ELEANOR ELIZABETH REYNOLDS

"Ellie"

Gym Leader 4

Eleanor

EDYTHE GRACE RICHARDS

Dramatic Club 4
Commercial Club 2, 4
President, G. N. C. 4
Basketball 3, 4



MARGARET PHYLLIS RIDGE

"Ridgey"

Peg

RUSSELL CATTERALL RILEY

"Russ"

Band 2, 3
Orchestra 3
Track 3



MARGUERITE ROACH

"Marg"

Dramatic Club 3, 4
National Thespians 4

MARY GEORGIANA ROACH

Dramatic Club 3, 4
Costume Mistress 4
Gym Leader 3, 4
Senior Gift Committee
Hilltop 4

Mary



W. FREDERICK ROACH

"Freddie"

Health Club—President
Forum 2, 3
Library Aid 3, 4
Dramatic Club 3, 4

Fred

ELEANOR MARIE ROBERTS

Eleanor

1937





ANNETTE ROBINOVITZ

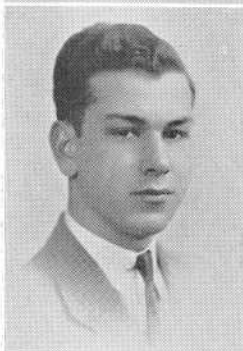
"Bunny"

Design Guild 2, 3
Commercial Club 2, 4
Traffic 2, 3, 4
Dramatic Club 3, 4
C. N. C. 3, 4
Literary Club 3

ROBERT RICHARD RODGERS

"Bob"

Commercial Club 4



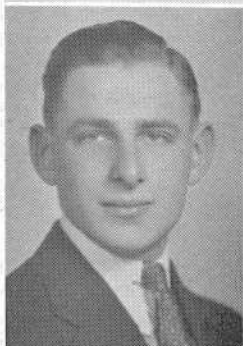
NORMAN ROY

"Norm"

Football 2, 3, 4
Basketball 3
Home Room Director 1
Varsity Club—Vice-president

"Norm"

MILDRED RUBIN



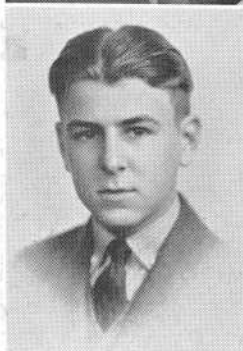
LOUIS SALHANICK

Band 1, 2, 4—Secretary-Treasurer 3
Orchestra 2, 3, 4
Forum 2—Vice-president 3—President 4
Dramatic Club 3, 4

Low

JOHN SANAKI

"Ray"



THOMAS H. SANDHAM

"Tiny" "Sandy"

HERMAN G. SANDLER

"Herm"

Herm





BERTHA SANFT

Chorus 4
Commercial Club 4
Forum 4

Bert

ELIZABETH SANTERRE

"Betty"



GERALDINE DOROTHY SANTOS

"Gerry"

Commercial Club 2, 4
Gym Leader 3, 4



CATHERINE W. SARGENT

"Kay" "Kitty"



MABEL RITA SAUNDERS

Commercial Club 4

Mabel



DOROTHY SEDDON

"Dot" "Dee"

Gym Leader 3, 4
Commercial Club 2, 4

Dot



EDITH SHABLER

Edith



KAISER P. SHAHDAN

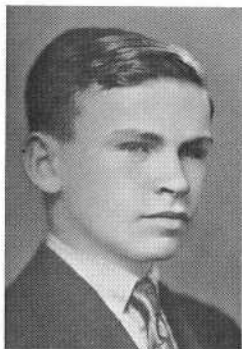
"Chief"

Traffic 2, 3—Captain 4

Kay



1937



JOHN SHEA

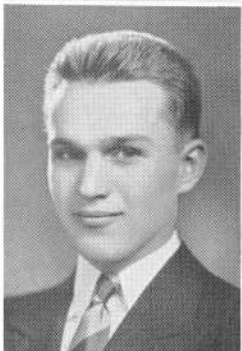


JEANNETTE LENORA SILK

"Janet"

Councillor S. A. A. 1
Dramatic Club 3, 4
Hilltop Staff 3,—Associate Editor 4
Home Room Director 4
Forum 4

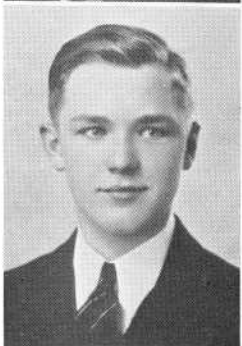
Janet



HARRY SINGLETON, JR.

"Junior"

Tennis 4



JOHN M. SKRZYBIEC

"Skippy"

Chorus 2

Skippy

CLAIRE RUTH SLATER

"Clip"

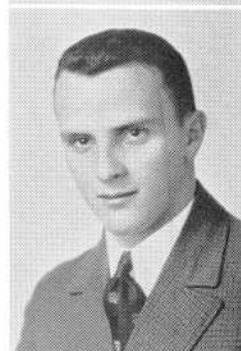
Commercial Club 2—Secretary 4



ESTELLE ROSE SILK

"Es" "Silky"

Commercial Club 2, 4



WILLIAM SILVIA

"Bill"

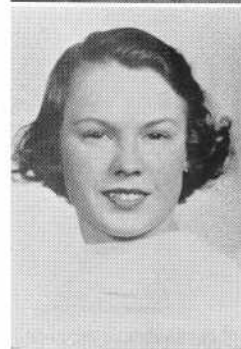
Football 2, 3, 4
Track 4
Varsity Club 3, 4



MARGARET ETHEL SINGLETON

"Peggy"

Commercial Club 2, 4



1937



CATHERINE THERESA SMALL

"Kay"

Home Room Director 2
Hilltop 3—Social Editor 4
Dramatic Club 3

Kay

ALLAN SMITH

"Smitty"

Traffic 2



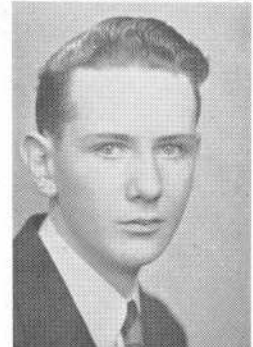
CECELIA SMITH

Commercial Club 4

DANIEL FRANCIS SMITH

"Bott"

Traffic 2, 3
Home Room Director 1



JEAN SMITH



Jean

NATALIE VALERIE SOARES

"Nat"

"Nat"



STELLA SOKOLOWSKI

"Soko"

Commercial Club 4
Dramatic Club 4

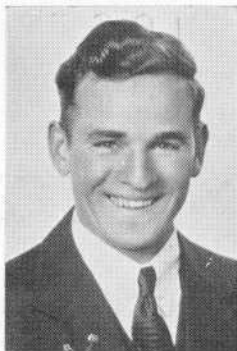


LIBBY SOORKIS

Vice-president Class 1
Home Room Director 1
Health Councillor 2



1937



ANTHONY CROWE SOUZA, JR.

"Tony"

Commercial Club 4
Traffic 2



ETHEL MAY SOWTER

Commercial Club 4



MARCEL A. ST. DENIS

"Markie"

Home Room Director 2
Commercial Club 4



MELVIN THOMAS STINTON

"Mel"

Chorus 2
Baseball 3, 4
Varsity Club 4

"mel"

(7 8)

GIL SOUZA

Commercial Club 4

MARY SPELLMAN

Commercial Club 4

SYDELLE STEINBERG

"Syd"

Orchestra 2, 3

Sydelle

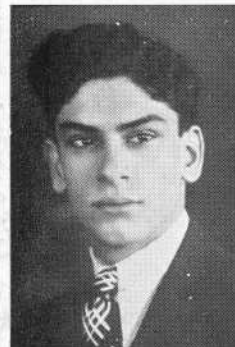
DIOCLECIANA STONE

"Sana"

Literary Club 4
Record Book Staff 4

"Sana"

1937





THELMA RITA STONE

"Thel" "Pom-Pom"

Commercial Club 2, 4
Gym Leader 3



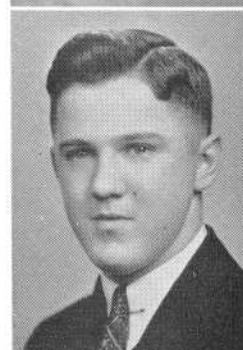
ALICE MARILYN SULLIVAN

"Sully"

Home Room Director 2
Commercial Club 2, 4
Gym Leader 4



EILEEN SULLIVAN



JOHN F. SULLIVAN

Commercial Club 4
Photographic Committee

NELLIE EVELYN STUART

Health Councillor 2
Home Room Director 3
Dramatic Club 4

Nellie

DANIEL J. SULLIVAN

"Dan" "Sully"

President Class 4
Home Room Director 1, 2, 3
Councillor S. A. A. 3
Health Councillor 2
Library Aid 4

ELIZABETH AGNES SULLIVAN

"Bette"

Commercial Club 4

MARY MARGARET SULLIVAN

Mary



1937



WALTER SULLIVAN

"Sull" "Red"

Home Room Director 1, 2, 3
Basketball 1
Dance Committee



NORMA ELIZABETH SUPRENANT

"Norm"

"Norm"



EDWARD AYLWARD SWEENEY

"Ned"



MARION SZCZEPKOWSKA

Chorus 3
Gym Leader 4
Commercial Club 4

WALTER A. SUNDERLAND

"Walt"

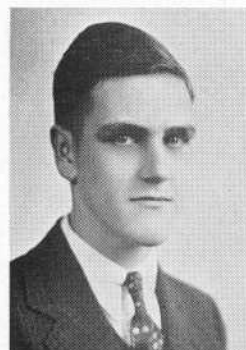
Home Room Director 4

Walt

ELIZABETH SWEKA

"Betty"

Library Aid 3, 4
Commercial Club 2, 4



MARY E. SWEENEY

Mary



EDMOND P. TALBOT, JR.

"Ed"

'Ed'



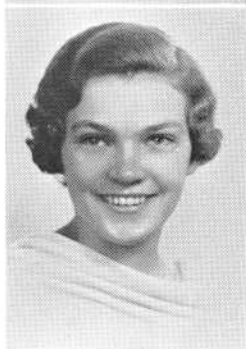
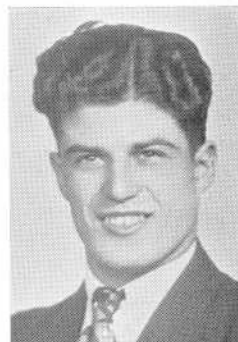
1937

1937



JAMELLE TANOUS
"Jimmie"

EDMOND TAVARES
"Ed"



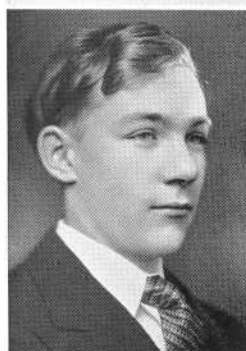
KATHERINE LOUISE TAYLOR
"Kathy"

Gym Leader 3
Commercial Club 4

Kathy

JOSEPH TEIXEIRA
"Joe" "Tex"

Home Room Director 2
Track 3, 4
Orchestra 2
Varsity Club 3, 4



ANTHONY TERRY

MARION THOMAS

Home Room Director 2, 3, 4
Choir 2, 3, 4
Orchestra 2, 3, 4
Dramatic Club 4
Record Book Staff



EDNA THRAVES
Commercial Club 4

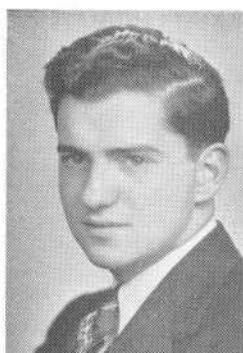
Marion

THELMA TIMBERLAKE
"Thel"

Commercial Club 4



1937



JEROME B. TOBIN
"Jerry"

M. MARGARET TOOLIN

"Peg"

Commercial Club 4
Gym Leader 3, 4
G. N. C. 3, 4



EDNA TOPA



RAYMOND F. TORPEY

"Ray"

Football 4
Baseball 2, 3, 4
Varsity Club 3, 4
Record Book Staff



SYLVIA JUNE TRUST

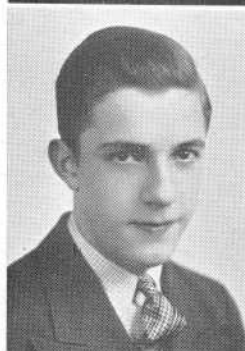
"Syl"

Commercial Club 4



BERTRAND TURGEON

Home Room Director 2
Traffic 2
Commercial Club 4



NICHOLAS T. TYRRELL

"Nick"



SANFORD WILLIAM UDIS

"San"

Forum 1, 2, 4—President 3
Debating Team 2, 3, 4
Assistant Editor, Record Book
Dramatic Club 3, 4
National Thespians 4
Library Aid 4

Sanford





H. RUTH ULANOFF

"Uly"

Commercial Club 2, 4



LORRAINE VALCOURT

"Rainie"

Volleyball 2
Commercial Club 4
G. N. C. 4—Vice-president 3
Record Book Staff

Lorraine



IRENE A. VERVILLE

Commercial Club 4
Basketball 3
Volleyball 2, 4
G. N. C. 4



JAMES VICKERS

"Jim"

L. CONSTANCE VANNER

"Connie"

Dramatic Club 3—Vice-President 4
National Thespians 3, 4
Home Room Director 2

Connie

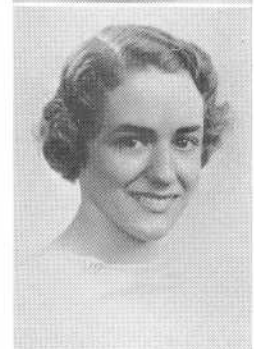
CECELIA T. VICKERS

"Ceal" "Cee"

Home Room Director 4
Commercial Club 2, 4



SHEILA UPTON



MARY CARVALHO VIVEIROS

"Pat"

1937



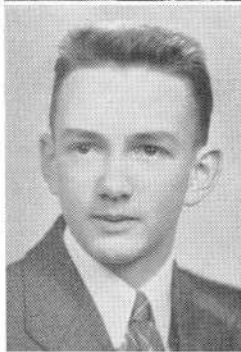
CHARLOTTE AUDREY WADSWORTH

Charlotte

HAROLD E. WALKER

"Hack"

*Remember
Chuck
"Hack"*



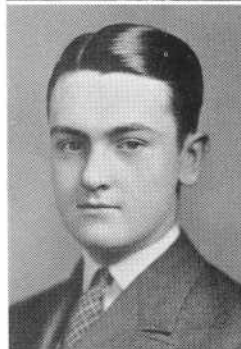
MILTON RUSSELL WALKER

"Milt" "Lefty"

Commercial Club 4

HELEN LOUISE WALSH

Dramatic Club 3, 4
Gym Leader 3, 4



JAMES EDWARD WALSH

"Jimmy"

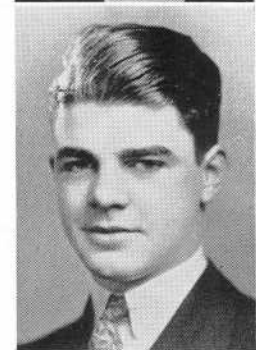
Home Room Director 2, 3, 4
Health Councillor 2
Dance Committee—Chairman

JOHN J. WALSH

"Jack"

Advisory Board

Jack



VIRGINIA WARBURTON

Health Councillor 2
Home Room Director 4



genny

LILLIAN MARY WARD

"Lil"

Commercial Club 2, 4



1937



ALMA KATHERINE WARING

Commercial Club 4
Gym Leader 3



MARCELLE WARRENER

"Mickey"



SHIRLEY S. WEISBERG

"Sherlocks"

Commercial Club 3, 4
Volleyball 3
Girls' Numeral Club 4



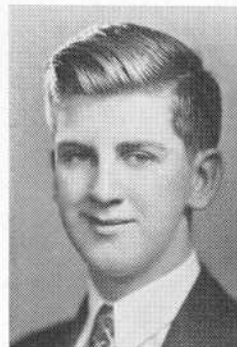
MARION WEST

Commercial Club 4

BERTRAND WARREN

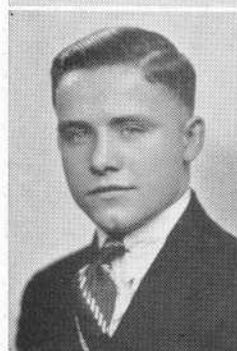
"Bert"

Bert



MURIEL M. WEINER

Commercial Club 3—Treasurer 4



BRADLEY JAMES WEST

"Westy"



EDWARD CHARLES WHALEN

"Ed"

Ed

1937

Always Mary

1937



MARY VIRGINIA WHALON

"Ginny"

Home Room Director 3, 4
Library Aid 3, 4
Social Committee—Chairman

CATHERINE VERONICA WHITEHEAD

"Kay"

Commercial Club 4



MARY WHITEHEAD

ELBERTA WILBUR

"Al" "Berta"

Elberta



LYNWOOD PARKER WILBUR

"Lyndy"

Traffic 3, 4



RUBY M. WILDE



HERBERT S. WILKINSON, JR.

"Bert"

Bert

NORMAN EARL WILLIAMS

"Norm"

Track 2, 3, 4



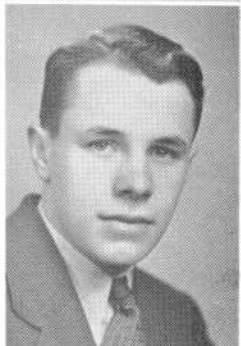


KATHRYN WIMER



MARY CATHERINE WINTERS

"Mickey"



FRANKLIN P. WOOD

Electrical Club 2, 3, 4
Vice-President 3
Sanco 2



HANNAH MAY WRIGLEY

Home Room Director 2, 3, 4
Commercial Club 2, 4

HELEN B. WINETA

EDITH WOOD

Commercial Club 4
Gym Leader 3

TEDDY WOJTOWICZ

Commercial Club 3, 4
Basketball 2

EDITH YATES

Commercial Club 4
Health Club 2
Home Room Director 4

1937



1937



NOELLA YOKELL
Commercial Club 4

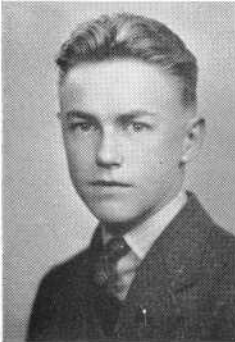
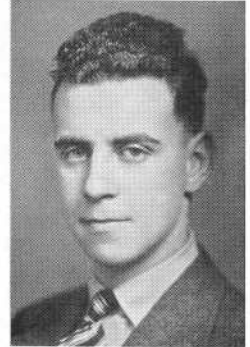
RICHARD LEWIS YOKEN
"Dick"
Home Room Director 2, 3, 4
Football 3

"Dick"



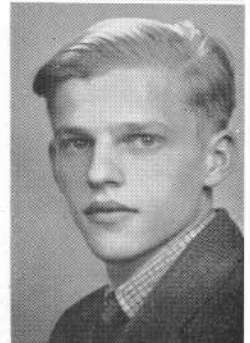
JOSEPH ZACAMY
"Joe"

EUGENIA ZDABOSZ
Commercial Club 2, 4



JOSEPH ZEBRASKY
"Jake"

EUGENE J. ZMUDA



ALLEN, ROSELLA ANNE
 ALMOND, GEORGE HAROLD
 ANDRADE, CLOTHILDE CORDEIRA
 BARTON, CLIFFORD EUGENE
 BESSETTE, HARRY TELESPORE
 CAHILL, JOHN
 CANULLA, GUIDO JOHN
 CARTER, NORMA COSTELLO
 CHEW, RUSSEL LAWSON
 COBERY, FRANCIS FOSTER
 CZERWONKA, FERDINANDA S.
 DELISLE, BERTHA LAURETTA
 DONOVAN, MARGARET MARY
 FITZPATRICK, CLARE ANNE
 FLEMING, THOMAS JOSEPH
 FLORES, HENRY
 FREEMAN, DANIEL
 GASIOR, TEDDY
 GRADY, HENRY
 HADDAD, JOSEPH
 HARRIS, RALPH
 HEBERT, CHARLES
 HUGHES, RICHARD
 HOLDERNESS, RALPH
 LESIOW, MICHAEL
 LESSARD, JOSEPH
 LINDO, JOHN
 MAILLOUX, HENRY

MARSHALL, JOHN HARVEY
 MARTINEAU, ARTHUR
 MCGINN, JAMES
 MENNELLE, NICHOLAS
 MORRIS, MAY
 NEGUS, RUSSELL
 NORTON, LORETTA
 O'CONNELL, THOMAS
 PERRY, FLORENCE
 PURDY, RAYMOND
 RADOVSKY, MILTON
 RAFFERTY, MARY
 REGO, DAVID
 ROY, AUGUSTE
 SHORROCK, HENRY
 SUNDERLAND, WILLIAM
 SWEENEY, BERNARD
 SZELIGA, WALTER
 TACHE, JEANNETTE
 THIBAUT, EMILE
 WAITE, CLINTON
 WALCZYK, FERDINAND
 WARRENER, CHARLES *"Anton"*
 WELCH, JOHN
 WENC, JOHN
 WHITE, RAYMOND
 WILLIAMS, MILDRED
 WOLSTENHOLME, CHESTER



In Memoriam

CHARLES THOMAS MEADOWCROFT

1920—1937

MILTON LLOYD MITCHELL

1919—1934

WHO'S



WHO

Bill Devitt	BEST PERSONALITY	Eileen Dwyer
Allan Norman	BEST LOOKING	Muriel Chace
Edward Henrys	MOST POPULAR	Eileen Dwyer
Andrew Gosciminski	MOST ATTRACTIVE	Virginia Fahey
Edward Henrys	BEST KNOWN	Dorothy Conroy
Joseph McGrady	CLASS SPORT	Margot Cartier
Humberto Medeiros	MOST ORIGINAL	Dorothy Conroy
Paul Dunn	CLASS FLIRT	Margot Cartier
John McAvoy	MOST AGREEABLE	Harriet Driscoll
Bud Manning	BEST DANCER	Eileen Dwyer
Alfred Forgette	MOST ATHLETIC	Helen Monks
James Walsh	BEST DRESSED	Marguerite O'Connor
Herbert Hart	MOST TALKATIVE	Helen Hinchey
Humberto Medeiros	MOST TALENTED	Pearl Ehrenhaus
Humberto Medeiros	MOST DIGNIFIED	Miriam Gammons
Sanford Udis	BEST SPEAKER	Sylvia Lubinsky
Humberto Medeiros	MOST BRILLIANT	Sylvia Lubinsky
Herbert Hart	CLASS WIT	Helen Hinchey
Humberto Medeiros	MOST INTERESTING	Dorothy Conroy
Humberto Medeiros	MOST PROMISING	Sylvia Lubinsky
Russell Negus	MOST MISCHIEVIOUS	Helen Hinchey
Humberto Medeiros	MOST STUDIOUS	Anne Driscoll
Edward Murphy	HAS DONE MOST FOR DURFEE	Dorothy Conroy

Autographs

Lois Manchester '38

Lally Gwynne '37"

John T. Crowley

Helen W. Dexter '37'

E. Christine Davis

Mildred V. Carroll

Ruby M. Vashburgh

Helen L. Ladd

Olga A. Lantala

Bob Dexter

G. C. Hoar

Ralph C. Allen

M. E. Macdonald

C. T. Fouches

Ambrose F. Keeley

John M. Lonsdale

Howe Pickup

Kathleen A. Lenehan

Marian R. Thompson

Margaret O'Connor

Lloyd Howard '36'

Anna G. McCarty

G. Leonard Stone '38"

Chas F. Parls '08



THE AUDITORIUM

Dedicated to the Alumni whose ever growing ranks reach upward and onward to those spheres of life wherein the pattern of success is woven.

THE CLASS OF NINETEEN THIRTY-SEVEN

The image features a minimalist, abstract design. A central horizontal band, defined by two parallel black lines, contains the word "ACTIVITIES" in a bold, black, sans-serif font. Above and below this band, several vertical black lines of varying heights and thicknesses are positioned, creating a symmetrical, architectural feel. The lines are arranged in groups, with the tallest lines in the center and shorter ones towards the sides, mirroring each other on both the top and bottom halves of the page.

ACTIVITIES



Marion E. Kernan

LIBRARY AIDS

The Durfee Library Aids comprise one of the most efficient organizations in this high school. Its members are noted for their prompt and courteous service in the library.

Under the guidance of Miss Marion E. Kernan and under the leadership of capable officers, the organization has had a successful year. The president is Edgar Knowlton, the vice-president Josephine Cluck; secretary, Sylvia Lubinsky; chairman of the Social Committee, Mary Whalon, and treasurer, Miss Kernan.

To be a Library Aid a student's scholastic standing must be high. He must be on the Principal's List, besides being a person of dependable character. Seniors, Juniors and a few Sophomores are selected.

The duties of the Library Aids are numerous and diversified. They must make out passes and issue them in the morning before school. These passes must be matched and delivered to the various study halls. The Aids keep the library books in order by means of the Dewey Decimal System. Each Aid has assigned to his care a particular shelf. The students



check books returned before school and charge books after school. They locate absent pupils and keep a check on encyclopedias. They assist both teachers and pupils in finding material and are always ready to take charge in Miss Kernan's absence. They also render many services outside of the library.

There were two outstanding social affairs. The first one of the year was a Christmas party held in the library, at which Mr. Small was a guest. In June, the Aids attended a beach party. These parties were arranged by Mary Whalon and her Social Committee, comprising Dorothy Conroy, Sylvia Lubinsky, John Wallace and John Foley.

Members of the Library Aids for the 1936-37 school year are:

Raymond Brocklehurst, Agnes Carreiro, Josephine Cluck, Dorothy Conroy, Kathleen Dean, Cynthia Douglass, Grace Dunn, John Foley, Ruth Gamson, Marjorie Giblin, Mary Guay, Priscilla Hart, Phyllis Higham, Marie Hughes, Elaine Howayeck, Samuel Kaplan, Edwin Kispert, Edgar Knowlton, Marion Longson, Sylvia Lubinsky, Chester Mahon, Marion McPartland, Humberto Medeiros, Dorothea Newton, Manuel Nunes, Albert Pontifice, Warren Prebluda, Frederick Roach, Jennie Spillman, Rosemary Stoody, Sally Stover, Daniel Sullivan, George Sutherland, Elizabeth Sweeka, Sanford Udis, John Wallace, Mary Whalon, Sybil Yamins.



DRAMATIC CLUB

Officers

President

SYLVIA LUBINSKY

Vice-President

CONSTANCE VANNER

Secretary

LILLIAN LINCOLN

Recorder

AARON FILLER

Financial Secretary

ANNA ELLISON

Call Boy

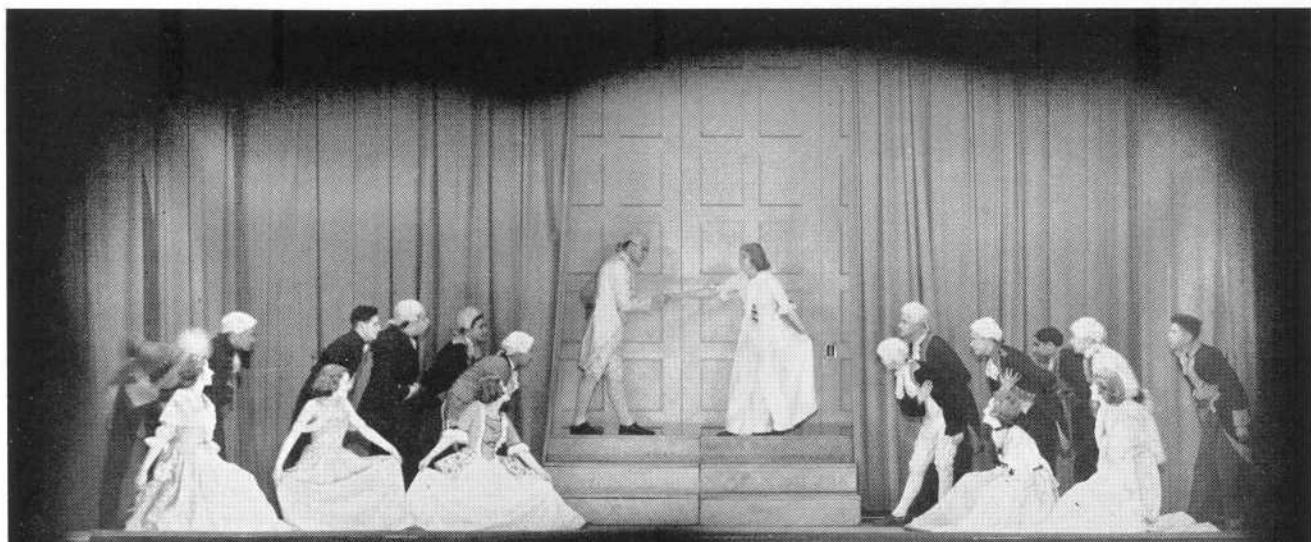
CHARLES PILLSBURY

Costume Mistress

MARY ROACH

Mistress of Revels

DOROTHY CONROY



Interview with Cyrano de Beaucaire

Hear ye — Hear ye! Great and small! Methinks 'twould be fitting and proper to review the year 1936-1937 as it full speedily passeth away.

Our most able president, Mistress Lubinsky, selected for the posts of Mistress of Revels and Master of Ceremonies, Mistress Dorothy Conroy and Master Bertrand Suprenant, respectively.

The school procured for our able guidance Mistress Barbara Wellington and Mistress Elizabeth L. Leonard, Dramatic Coaches, and Master Malcolm G. Salmond as worthy Faculty Treasurer.

Mind ye, now, through the able goodness of our instructors we were permitted a mystery ride for Seniors and post graduates only. Methinks the hobo party was the best time had by all, albeit we have had sundry other social affairs.

When December came forth, our school played host to Roger's High School Dramatic Club. The visiting school presented "The Florist Shop" and refreshments were served most graciously by the Durfee hosts to ye visiting players.

Pray heed! December, at ye Yule season, our more talented members presented ye annual three one-act plays entitled "Friday at Eight." The plays, lads and lassies, which were presented were "Cyrano de Bergerac," "The Moving Finger Writes," and Act II of "Cradle Song." Little time had passed away when plans were started for Novelty Nite, "Sing-Sing Scandals," with every member of the club partaking. Hear ye! The performance attracted a multitude of spectators and was a huge success. Mind ye, now, with the goodly proceeds from this financial success the club purchased a cyclorama, black as night, for the school's future actors who tread the boards.

As annual custom dictateth, the Dramatic Club, Chorus and Orchestra of B. M. C. Durfee combined their talents and presented their operetta, i.e. "Pirates of Penzance."

As the year passeth, the club hath been able to procure the services of full prominent men and women. Among these was Mr. H. V. Grandville, a truly dramatic reader.

The year was rounded out with the three-act play, i.e. "Monsieur Beaucaire." Mistress Lubinsky and Master Humberto Medeiros hath delighted the stalls fairly with their leading parts, supported by a most excellent cast. Pray heed! When an act from Monsieur Beaucaire was entered in the Massachusetts Drama Day Contest at Boston, individual honors were won by our Master H. Medeiros and the play pronounced third in the contest.

Following close on the heels of this production, fourteen new members were admitted to ye honor society of National Thespians.

Methinks that after such an eventful and successful year, the worthy society shall continue on its journey to success.





Officers

President
JAMES DARCY

Vice-President
JOHN LUND

Director
MISS HELEN L. LADD

Librarian
JOHN HEFLIN

Business Manager
NORMAN CAMPEAU

The Durfee Chorus, under the able leadership of Miss Helen L. Ladd, is composed of sixty-eight members, chosen from all four classes. Clad in gray gowns and carrying candles, it marched through the corridors at Christmas time singing carols.

In February the Chorus produced its sixth annual Gilbert and Sullivan operetta, "The Pirates of Penzance," ably assisted by the Orchestra, Dramatic Club and Miss Barbara Wellington.

Eleven members of the Chorus participated in the New England Festival Chorus held at Hyannis in March. In May it joined with the Orchestra in their annual concert. The Chorus helped to make this year's Founder's Day program, Durfee's fiftieth, one long to be remembered.

This year a merit system was started, and at the end of the year an emblem was awarded each member of the Chorus who had the required number of credits.

A party at the Country Club ended a very successful and enjoyable year for the Durfee Chorus.

CHORUS



Under the direction of Miss Helen L. Ladd, the Orchestra experienced a very busy and successful year. This was the first year the organization of fifty-eight members employed the merit system. By this system each member who had acquired eighty-five merits at the end of the year received an insignium.

In December they assisted the Dramatic Club by rendering musical selections between the three one-act plays. In February they ably accompanied the Chorus in the Gilbert and Sullivan opera, "The Pirates of Penzance." In this same month they supplied the musical portion of the program attending the lecture sponsored by the American Legion. Eleven of the members of this organization represented Durfee at the New England High School Music Festival held at Hyannis in March. In April the musical portion of the Dramatic Club production of "Monsieur Beaucaire" was supplied by the Orchestra. Fourteen members played for the State Dramatic Contest held in Boston later in the month. The newly organized string quartet represented the Orchestra at a concert held by the Senior Music Club of Fall River. During Music Week in May the Orchestra and Chorus masterfully presented their annual concert. The string quartet played at the State Festival in Lowell and at the New England Festival in Gloucester. This small group again performed at the Boston Art Club for a Luncheon Meeting of the New England Festival Association in June.

The entire organization rendered the musical selections for Class Day and Graduation. It closed its season with a party at the Country Club.

ORCHESTRA





COMMERCIAL CLUB

Officers

President
RUTH P. BROWN

Vice-President
IRENE KELLEY

Secretary
CLAIRE SLATER

Student Treasurer
MURIEL WEINER

Faculty Advisor
MISS ISABELLE O'NEIL

The Commercial Club of the B. M. C. Durfee High School has completed another successful year. This year, as in previous years, the membership of the club was limited to Seniors.

In December the club held a joint Christmas party with the Girls' Numeral Club. At this meeting the club agreed to donate \$50.00 for the Christmas baskets, which were distributed to some of the most needy families of high school students by some of the members of the club.

For the January meeting moving pictures were shown to the members by the New England Telephone & Telegraph Company. The pictures were both educational and amusing.

In February a roller skating party was held in the Casino. Over 150 pupils attended and it proved to be a huge success.

Commercial Club students presented a play to the club for the April meeting and it was greeted with great applause.

An evening dance was held in May and at the close of the year a picnic for members was held.

The success of the events sponsored by the club may well be attributed to the co-operation shown by the members in carrying out their plans of the club.



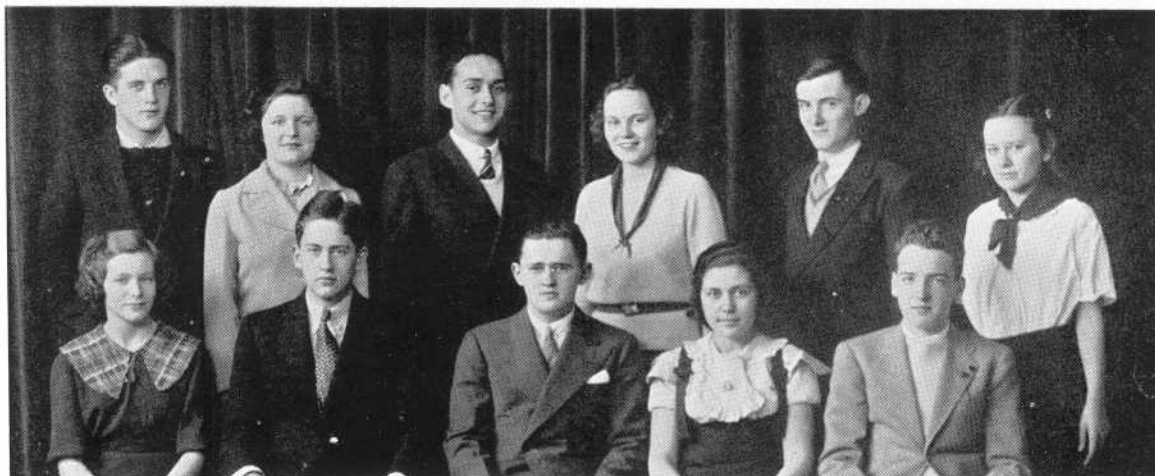
HILLTOP

The Durfee Hilltop is the weekly newspaper published by the members of the Journalism classes, under the faculty direction of Mr. John T. Crowley and the student supervision of Dorothy P. Conroy, editor-in-chief. It is composed of four pages, the first of which is devoted to news, feature and human interest stories; the second and third to social columns, editorial comment, book reports, poetry and other miscellany; and the fourth to accounts of interscholastic and intramural athletic contests and sport notes.

The Hilltop affords students the opportunity to display their journalistic abilities and to improve whatever literary ability they may possess, regardless of the type of writing by which their specific ability is accentuated. Mr. George Herbert Palmer, in his essay on "Self-Cultivation of English," said to "Welcome every opportunity for writing"—and who is more qualified than the journalism students, who take active roles in the publication of a high school newspaper, to abide by Mr. Palmer's second precept?

The Durfee Hilltop is published on the same principles as is a large city newspaper, except on a much smaller scale. We have two associate editors, John McAvoy and Janet Lee Silk; a news editor, Ruth Brown; sports editor, William Devitt; social editor, Catherine Small; literary editor, Catherine Gibbons; a girls' sports editor, Margot Cartier; a humor editor, Eleanor Kay; business manager, an office worthy of a delta, Rita L. Burke; circulation managers, Anna Duffy and Nancy Entwistle, and a head typist, Ruth Gamson.

Besides being beneficial to these students, who are materially responsible for its existence, the Durfee Hilltop is also an indispensable record of scholastic activities, curricular and extra-curricular, participated in by Durfeeites.



S. A. A. COUNCIL

Officers

President

EDWARD F. MURPHY, JR.

Vice-President

DANIEL J. FENNELLY

Secretary

GERALDINE SIMPSON

PRISCILLA HART
EUGENE MURPHY
RUTH CONNON
HARRY GOLUB

RAYMOND FITZGERALD
SALLY STOVER
JOHN FOLEY
ANN GIBBONS

The S. A. A., with its fifteen hundred members, has continued through its Council to centralize all the extra-curricular affairs of the school. It has attempted to strengthen the scholastic, athletic and social interests of the students by planning varied projects.

It has published the Principal's and All-A Lists at the close of each term, cared for the Bronze Plaque, arranged "pep" assemblies, sponsored the annual Officers' Banquet, distributed the "Guide for New Students," conducted four matinee socials, created a local chapter of the National Honor Society, awarded certificates, deltas and gavelts.

It represented our school at the Southeastern Convention held in Plymouth and at the State Convention held in New Bedford. It was privileged to stage a model council meeting at the Secondary School Conference at Boston University.

It has endeavored in every way to co-operate with the Principal and Faculty in making Durfee second to none in Massachusetts.

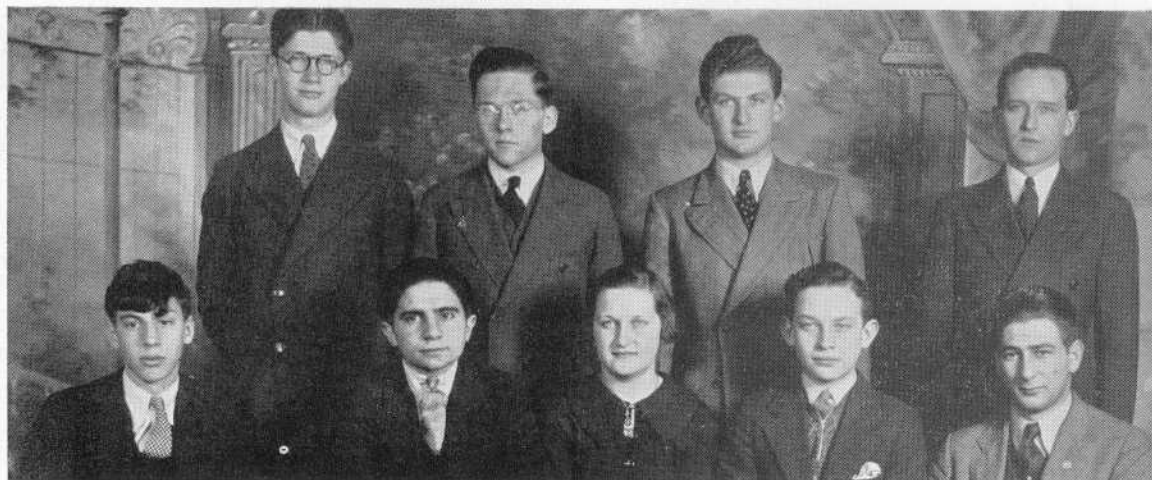


FORUM

The Forum has been for many years the nucleus of the school's debating, public speaking and interscholastic activities. Being one of the oldest and largest clubs in the school, it has contributed in a large measure to the keeping of B. M. C. Durfee High School among the leading institutions of secondary education in the state.

This year the Forum was most successful. The debating team, a permanent institution of the Forum created to foster interest in, and to develop the art of friendly and educational argumentation in the school, has won the State, the Colonial League, and the New England championships in debating. These victories, never before attained in the history of the school, are largely due to the untiring zeal of Mr. William F. Kaylor, the Forum's faculty advisor and debating coach, to whom we acknowledge our heartfelt gratitude. Among the honors which the Forum has earned for the school this year is membership in the National Forensic League.

With sincere admiration and cordial felicitations the class of 1937 wishes the Forum the continuance of its long, useful and honorable existence.



DEBATING

The Durfee Debating team enjoyed the most successful year in its history, culminating in attending the National Debating Tournament held in Jacksonville, Illinois, sponsored by the National Forensic League. The Hilltoppers annexed practically every title in New England. They were crowned champions of the Colonial Debating League and won first place in the Southeastern Massachusetts National Forensic League Tournament. The team won first place in the Massachusetts State N. F. L. Tournament and annexed the New England championship which was held at Laconia, N. H.

The team won twenty-one out of twenty-four debates. Among the many teams Durfee defeated were Cambridge Latin, Portland, Me., Charlton, Lincoln Academy, Me., Barnstable, New Bedford Textile and New Bedford High.

Members of the team who participated in the sectional tournaments and the national tournaments are Patrick H. Harrington, Jr., Sumner Levin, Theophilo Vincent and Sanford W. Udis. Other members of the squad are Warren Prebluda, Charles Belovitch, William Entin, Manuel Nunes and Bertha Carter.

The success of the debating team is in large measure due to the untiring efforts of Coach William F. Kaylor.



LITERARY CLUB

Officers

President

MANUEL NUNES

Vice-President

BERNARD MILLER

Secretary

EDGAR KNOWLTON

Faculty Advisor

MR. AMBROSE F. KEELEY

Under the supervision of Mr. Ambrose F. Keeley the Durfee Literary Club commenced its fourth year with an enrollment of approximately thirty members. Practice in literary style and the development of the ability to criticize intelligently are the chief aims of this club. The bi-weekly meetings were in charge of the club officers who conducted a business discussion in which the program for two or three meetings was planned in advance. The major part of each two-hour meeting was employed in reading aloud the original prose or verse compositions voluntarily submitted by the various members. Three or four of these were discussed by a special critic and then by the group as a whole. Many papers displayed remarkable talent; a few were printed in the Hilltop.



TRAFFIC SQUAD

The Traffic Squad is composed of pupils of the four classes of Durfee who, at the beginning of the school year, volunteered to try to enforce the laws to the best of their ability.

The officers of the Squad include two captains, five first lieutenants and five second lieutenants. The Squad is under the personal supervision of Miss Miles.

The Traffic Squad was originated for the sole purpose of regulating traffic, but at present it does more than just enforce traffic rules. It takes care of the lawn, reports those who are out of bounds, keeps students from entering the gym during lunch periods, takes care of the traffic signs on Rock street and tries to keep the corridors in both buildings quiet during the lunch periods.

The greatest accomplishment of this year's Squad was the solution of the problem of criss-crossing between buildings. We solved this problem by changing the exit and entrance doors of Durfee Building.

The Traffic Squad is a very effective organization and is needed for the safety of the pupils.

Pictured above, in front row (left to right), are First Lieutenants Gardner Borden and Kalil Kalil, Co-Captain Kaiser Shahdan, Secretary Lorraine Valcourt, Co-Captain James Felder, First Lieutenants James Gillet and George Almond. Back row (left to right), Second Lieutenants William Jordan, Richard Weyer and Edward Christophers, First Lieutenant Americo Baldaia, Second Lieutenants Theophilo Vincent and Malcolm McFarland.



ELECTRICAL CLUB

Officers

President

LIBERATO A. MAURETTI

Vice-President

GEORGE F. SUTHERLAND

Treasurer

EDWARD M. PEREIRA

Secretary

FRANK R. BORGES

Corresponding Secretary

JOHN F. CAHILL

Faculty Advisors

MR. MYRON T. ASHLEY

MR. HENRY J. SHEA

Under the guidance of President Liberato Mauretti, and assisted by the faculty advisors, Mr. Myron T. Ashley and Mr. Henry J. Shea, the B. M. C. Durfee Electrical Club has enjoyed a successful year.

The purpose of this club is to create greater interest in things electrical, to promote co-operation between electrical students and professional electrical men, and to take up work not possible in class.

Meetings are held bi-monthly and at these meetings the club, as a whole, listens to some speaker who is a professional in some branch of the electrical field. The club also visits numerous places of electrical interest.

A few places of electrical interest visited by the club were a New York boat, Fall River Telephone Exchange, General Cable Factory, and Fall River Electric Light Company.



GIRLS' NUMERAL CLUB

The Girls' Numeral Club which is under the supervision of Miss Mary F. McCarthy, faculty advisor, was organized in February, 1936, with the purpose of creating an active interest in girls' sports. The members of the Numeral Club also assist the athletic coach in her endeavor to form an extra-curricular sport program for the girls.

As an added attraction for the members of the club, some form of entertainment is planned for each month. This year a Hallowe'en party, a Christmas party, a theatre party, a bicycle mystery ride, a swimming party and a bowling party have been held. This year the members of the Health Club formed a hiking club and each week a member of the Girls' Numeral Club was chosen to lead them on their hike.

Membership is restricted to girls who earned at least one set of numerals in either volleyball, basketball or tennis.

The club officers are chosen as follows: a president is elected from the Senior membership, a vice-president is elected from the Junior membership, a secretary is elected from either of the two upper classes. An executive board is also elected, composed of three, one from each class; and they are elected to assist the other officers. The club meetings are held on the first Monday in each month.

The B. M. C. Durfee High School Band, as usual, played at all the football games, participated in holiday parades and played for assemblies.

At the football games the band made a very fine appearance, having a new addition to their uniform, namely, a new cap. The Band, as usual, was under the capable direction of Mr. William Allinson, who again turned out a well-balanced and well-organized Band. Mr. Ambrose F. Keeley was drill major and Marilyn Cloutier was drum major.

At the New Bedford game the Band put on an exhibition comparable to college units. The Band lined up in front of the Durfee stands, marched over to the New Bedford stands, and spelled out "H-E-L-L-O N. B." Then they countermarched to the Durfee side and spelled out, in huge letters, "B. M. C. D." The Band received the plaudits of the crowd and indeed did they deserve them, for they had really worked long and tediously in preparing the exhibition.

BAND

The membership of the Durfee Varsity Club is limited specifically to athletes who have earned their red and black "D" insignias for service in some phase of interscholastic sports: football, baseball, basketball, track or tennis.

This organization now includes thirty-three members, and the social, business and financial affairs of the club are directed by a body of student officers, namely: Edward Henrys, president; Gerald Reagan, vice-president; Norman Roy, secretary, and Edward Pereira, treasurer. The purpose of the Varsity Club is primarily to bring together boy students who are athletically inclined; it affords these sports enthusiasts the opportunity to discuss their interests in general, and it gives the athletes a chance to conduct social affairs, the revenue of which is utilized to purchase whatever sports equipment is needed by the lettermen.

Relevant to this latter benefit derived by members of the Varsity Club, this organization sponsored a series of exhibitions, wrestling matches and boxing bouts in order to secure enough money to buy a varsity jacket for each member of the club. These shows proved to be huge successes, and were materially instrumental in the ultimate purchase of the jackets, and the substantial sum that still remains in the treasury will give next year's club a good start.

The Varsity Club is an organization that is recognized by the Students' Activities Association because it is socially and financially well balanced, and therefore worthy of recognition by the Council.

VARSITY

CLUB



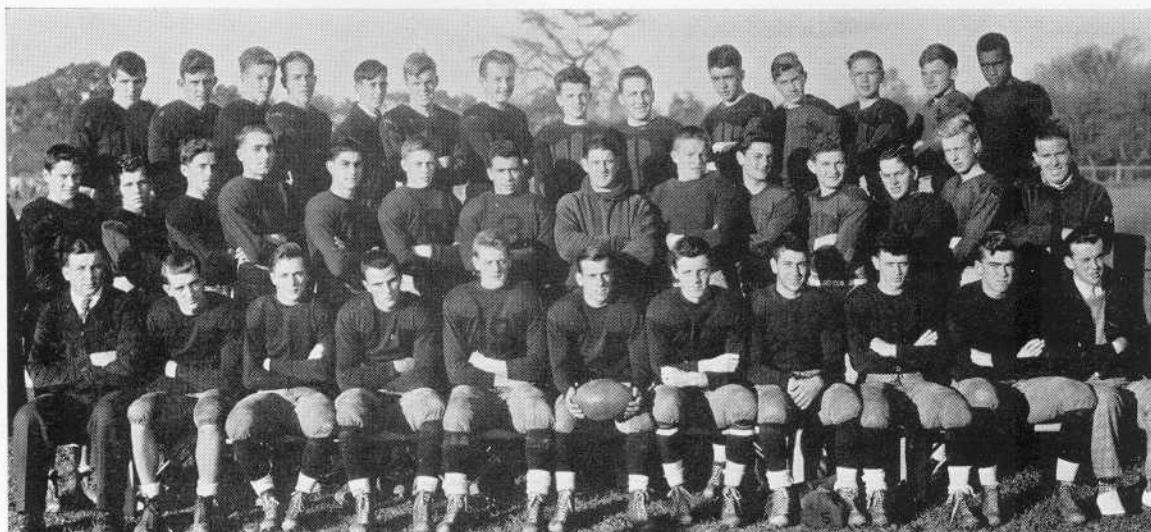
CHEERLEADERS

These young ladies have been a big help to the football team this past year by cheering the boys on to victory many times.

They made a good showing at home and out-of-town games, and also played an important part in school assemblies.

This is the third year for the Cheerleaders to receive insignias for their work during the football season. They were given to the following: Seniors, Head Cheerleader Mary Elizabeth Mannion, Margaret Clifton, Eileen Dwyer, Dorothy Conroy; Juniors, Edna Walker and Mae Dumais.

Miss Mary F. McCarthy deserves a great deal of credit for her co-operation in instructing the girls.



FOOTBALL

The Durfee football team of 1936 opened the season against a strong Rogers High of Newport eleven and met defeat by the score of 32-0. The Hilltoppers redeemed themselves, however, the following week, taking the Attleboro team into camp by a score of 12-7. Fairhaven proved too large an obstacle to overcome, though many of the spectators believed Durfee the better team. This score was 7-0.

New Bedford Vocational proved easy. Ed Henrys, aided by effective blocking on the part of his teammates, ran wild, and the trade school boys were trounced 21-0. North Attleboro and Taunton were taken in stride, the former by the score of 6-0, and the latter by 26-7. Again the blocking of Captain Al Forgette and his mates proved exceptionally effective.

Three of the Durfee first-stringers were out of the Coyle game with injuries, and the Diocesan team scored a decisive 13-0 victory over the wearers of the Red and Black.

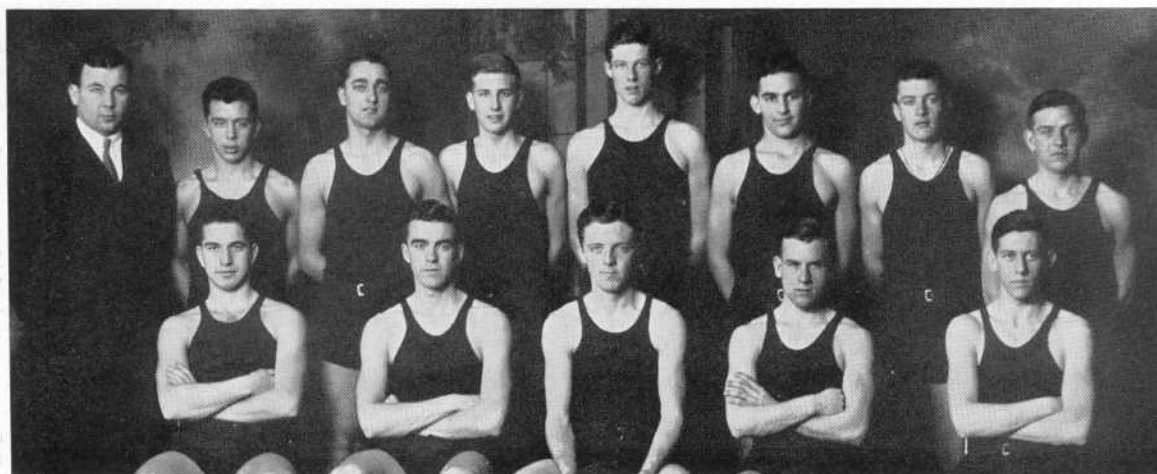
An Alumni team composed of Durfee players of more recent years, despite the weight and experience advantage which was theirs, could do no better than score a safety, while the Varsity managed, by good teamwork, to make a touchdown and the point after. Score, 7-2.

Then came Thanksgiving, and with it the traditional battle of the old rivals, Durfee and New Bedford. For the first time in eight years the Whalers were not able to boast a victory. The Hilltoppers had to be content with a 6-6 tie, however.

The result of the season's work was five victories, three defeats, and one tie.

Senior lettermen were Captain Al Forgette, Ed Henrys, Bill Silvia, Ed Ferreira, Ray Fitzgerald, Len Dennis, Bob Booth, Norm Roy, Jerry Reagan, Ray Torpey, Chet Goodwin and Manager Ed Halpin.

Much of the credit for the successful season is due to the zeal and interest of Coach Stephen Nawrocki.



BASKETBALL

Under the supervision of Coach Nawrocki the B. M. C. Durfee High basketball team, led by Captain Chet Goodwin, enjoyed a fairly successful season, winning six out of twelve games and losing three games by a margin of only one field basket. The other three losses were by only a small margin. Never was this team snowed under by a large score. New Bedford and New Bedford Vocational were the only teams the Hilltoppers failed to beat.

The team was built around three returning lettermen, Captain Chet Goodwin, Al Forgette and Jerry Reagan. The newcomers to the squad and substitutes from the year before formed the remainder of the team.

The members of the team that are in our graduation class are Captain Chet Goodwin, a guard; Ernie Israel, who shared the rest of the back-court work with Sam Kaplan; Jerry Reagan, a rangy, high-scoring center; Al Forgette, a speedy forward, and Bill Myers, who understudied Jerry Reagan at the center post.

Coach Leslie W. Orcutt entered upon his fifteenth year as coach of baseball teams at Durfee. It is largely through his effort that baseball is the most successful of the major sports at this high school.

The season opened unofficially when the Alumni defeated the Varsity by the score of 21 to 20 in a comedy contest marked by many hits and errors.

Although the team boasted only three lettermen at the start, Coach Orcutt, with his uncanny ability, is slowly developing a potential championship team.

This year's team is receiving the wholehearted co-operation from everybody but the weatherman, as he necessitated the postponement of the first contest and a triple postponement of the second.

Senior members of the team are: "Ray" Torpey, veteran backstop; "Tom" Considine, hardhitting receiver; "Al" Norman, dependable catcher; "Feyez" Massoud, speedball twirler; "Mel" Stinton, slugging pitcher-outfielder; "Chet" Goodwin, steady first baseman; "Trixie" Keefe, smooth and clever second baseman; "Sonny" McFarland, heady keystone guardian; "Walt" Sullivan, peppy, hard-hitting shortstop; "Tommy" Flynn, hot corner guardian; "Al" Forgette, speedy outfielder, and "Jerry" Reagan, Durfee's Di Maggio.

This year's schedule:

April 19—Alumni.*
May 4—Taunton.*
May 7—New Bedford.*
May 11—Coyle.*
May 14—New Bedford Vocational.*
May 17—Holy Family.*
May 19—Fairhaven.
May 21—Holy Family.
May 25—Taunton.
May 28—New Bedford.
May 31—Providence Central*
June 4—Coyle
June 8—New Bedford Vocational.

*Home games.

BASEBALL

TRACK

The Durfee track team had a busy season which featured two interscholastic meets with New Bedford High and New Bedford Vocational, and two interclass meets, both of which were won by the Seniors.

The Seniors were the most consistent point winners on the squad. Captain Ray Fitzgerald was the outstanding member of the squad, earning the reputation of a "triple threat" man as he won points in the 100-yard dash, 220-yard dash, and the broad jump. Cliff Barton, Senior, was another man who won many points for the squad despite the fact that he was held under "wraps" all season. In the early part of the season Barton injured his ankle during a practice session and he was bothered throughout the entire season by the aggravation. He was outstanding in the field events and won points in the broad jump, pole vault and high jump.

Bob Booth was the outstanding weight man on the squad, setting the mark for others to shoot at in the javelin throw and shot put, while Joe Teixeira was a close runner-up.

Milt Walker was another Senior who won recognition for himself in the field events, his outstanding ability being in pole vaulting.

Other Seniors on the team were James Darcy, Norm Williams, John Bower, Mike Lesiew, Walt Szeliga, Milt Radovsky and Bill Silvia.

In recent years at Durfee track has not been considered a major sport, but during this season the attention of the student body was turned toward the track team and many visited Alumni Field when a track meet was in progress.

TENNIS

Having launched forth on its fourteen-match schedule, the 1937 Durfee tennis team looks forward to a fairly successful season. With seven out-of-town matches and seven to be played at home, the team looks for a busy season. Led by Captain Eddie Harrington and Coached by Mr. Ambrose F. Keeley, the netmen hope to compile an enviable record.

The opponents for the season are Providence Classical, Attleboro, Fairhaven, Dartmouth, New Bedford, De La Salle, Portsmouth Priory and Hope High.

The team consists of Captain Eddie Harrington, Harry Singleton and Hugo Perron, Seniors; Dan Fennelly, Huddie King and Dick Maker, Juniors, and Paul Hinchey and Russell Kneen, Sophomores.

With the return of these three Juniors and two Sophomores, the outlook for next year's team seems bright.

The page features a minimalist design with several vertical lines of varying heights. Two horizontal lines intersect these vertical lines, creating a grid-like structure. The word "ADVERTISEMENTS" is centered between these two horizontal lines.

ADVERTISEMENTS

Youth continues to choose . . .



Bachrach

This year, last year, and for sixty-nine years previously, students with verve and imagination have chosen Bachrach and will, we hope, for time to come.

Bachrach

PHOTOGRAPHS OF DISTINCTION

56 North Main Street
Fall River

Tel. 4703



THIS MARK MEANS
FABRIC VALUE

PEPPERELL
MANUFACTURING COMPANY
Fall River

Bryant College

Providence, Rhode Island

Beautifully located on campus in exclusive residential district, this outstanding college offers exceptional two-year degree courses in Business Administration, Accountancy, Finance, and Executive Secretarial Training. Also 1-year Intensive Secretarial Courses. Co-ed. *Effective Placement Service.* Splendid college buildings. Gym. Dormitories. 75th year begins September 8, 1937. Summer Session begins July 6.

A new 4-year Commercial Teacher Training Course approved by the State Director of Education of Rhode Island,



will also begin in September. Catalog and View Book mailed free upon request. Address Director of Admissions, Providence, Rhode Island.

John P. Nowell, Jr.

MILL STOCKS
INVESTMENT SECURITIES

Archer Building
38 Rock Street

CLASS OF '37
SUCCESS

Loring
STUDIOS, INC.

392 SPRING STREET

The
Robbins Company

Attleboro, Mass.



Compliments of the Company
supplying the 1937 rings.

IF MEN DID THE COOKING ...

they wouldn't swelter over a hot,
old-time stove

— I N S T E A D
they'd have

Cool Clean
ELECTRIC
Cookery

Let Father try your old stove and you'll have a new electric range tomorrow. He'll insist upon your enjoying the speed, comfort and economy of electric cookery. Tell him now about our low Spring prices and easy budget terms.



GO ELECTRIC IN '37

FALL RIVER ELECTRIC LIGHT COMPANY

Part of New England Power Association

ENGRAVING

FOR THE NINETEEN THIRTY-SEVEN

R E C O R D B O O K

Made by

HOWARD-WESSON CO.

WORCESTER, MASSACHUSETTS

Compliments of

AMICI

Compliments of

VIVE SOCIETY

Compliments of

FIDAMIES

GRADE A MILK — CREAM
PLAIN AND CHOCOLATE MILK
SOLD IN TECH CAFETERIA

—From—

**CHAREST & SON
DAIRY**

OFFICE: 564 KING PHILIP ST.
Dairy: 529 Birch Street Telephone 500

W. SEYMOUR GRAY

Typewriters and Supplies

Royal Portable & Standard Typewriters

145 SECOND STREET

PHONE 449

BEST WISHES

From Speedwell Farms Ice Cream

**LYNDONVILLE
CREAMERY ASSOCIATION**

REAR 141 ROCK STREET

PHONE 3773

**HUTCHINSON'S
ART SHOP**

Pictures—Picture Framing
Artists' Supplies

DIPLOMAS FRAMED

154 SECOND STREET

Fall River's Leading Sportsman's
Headquarters

**FOSTER'S
SPORT SHOP**

GROCE'S
Est. 1882

Phones 1612—1485 Fourth & Pleasant

HIGH SCHOOL NEWS
IS FEATURED IN

The Herald News

Fall River's Home Newspaper

MANY OF THE PICTURES
IN THIS

YEAR BOOK

WERE TAKEN IN THE
FOURTH FLOOR
PHOTOGRAPH STUDIO OF

Cherry & Webb's

ART IS A Paying Career

Trained artists are needed today for salaried jobs on the staffs of newspapers, magazines, advertising depts. of stores, etc. Art is not only an interesting career but a well-paid business. You needn't be a genius to earn good money in commercial art — many with very little talent have succeeded with proper training.

For 25 years this school has graduated successful artists. There are many requests for our graduates. Send card or letter with your name and address for booklet which tells of opportunities in commercial art — or ask for free Knauber Art-Ability Test.

Roy A. Davidson, Director

SCHOOL OF PRACTICAL ART
885 Boylston Street, Boston

YOUR CAREER?

Every normal high school graduate has a perfectly natural desire to continue his education for the purpose of improving his earning capacity.

Some choose to follow the orthodox professions of law, medicine, teaching. Many are seriously considering courses in secretarial science and accounting, the cost of which is relatively small, and which lead to pleasant and lucrative employment.

In your plans for your future career will you give this up-to-date local business training school consideration?

THE F. G. ALLEN SCHOOL

of Secretarial Training and
Business Administration

Granite Block

BOWENVILLE COAL CO.

'blue coal'

10 Third Street

Telephone 4023

Compliments of

**BRENNAN'S
BEAUTY STUDIO**

44 NO. MAIN STREET

Compliments of

LIST BROS.

Specialists in Outfitting
Athletic Teams

WALTER FRAZE CO.

9 NO. MAIN STREET
SPORTING GOODS

Class Rings

Cameras

Compliments of

JOHN FRIAR

Compliments of

HICKEY'S PHARMACY

Compliments of

W. J. GINGRAS

GENERAL INSURANCE
GRANITE BLOCK

Compliments of

NOBBY MEN'S SHOP

162 SO. MAIN ST.

Tel. 4779

A. H. HOOD & CO.

INSURANCE

26 BEDFORD STREET

Compliments of

EAGLE RESTAURANT

Compliments of

THOMAS. D. MORIN

"YOUR JEWELER"

332 STAFFORD RD.

Phone 6260

BROW'S DRUG STORE

For Eczema and All Skin Troubles Use

BROW'S ECZEMA OINTMENT

PRICE 50 CENTS

127 STAFFORD ROAD

Compliments of

TALBOT PHARMACIES

W. HARRY MONKS

REAL ESTATE

AND

INSURANCE

GRANITE BLOCK

Compliments of

AL DAVIS' MEN'S SHOP

Compliments of

DR. EARLE E. HUSSEY

Nonpareil Confectionery

Ice Cream—Tea Room

135 So. Main St. 1200 Pleasant St.

ESTABLISHED 1842

ADAMS BOOKSTORE

BOOKS AND
STATIONERY

We Specialize in School Supplies

165 NORTH MAIN STREET

TALBOT & SON, INC.

Next to City Hall

Outfitters to Men and Boys

BRALEY'S CREAMERY, INC.

Distributors of

**BIRELEY'S
CALIFORNIA
ORANGEADE**

Fall River

Massachusetts

DIAMONDS

WATCHES

SILVERWARE

WONSON
[INC.]
JEWELERS

FALL RIVER, MASS.

154 South Main St. Phone 1627

JEWELRY

CLOCKS

FALL RIVER ACADEMY
of HAIR and BEAUTY CULTURE
Capable Instructors—Advanced Methods
44 North Main Street, Fall River
Telephone 7860

Compliments of

HON. ALEXANDER C. MURRAY

Compliments of
JOHN F. STAFFORD & CO.
INSURANCE
88 PLEASANT STREET

Compliments of

Leary Press



FALL RIVER


PRINTED BY
C. J. LEARY & SONS, INC.
FALL RIVER

