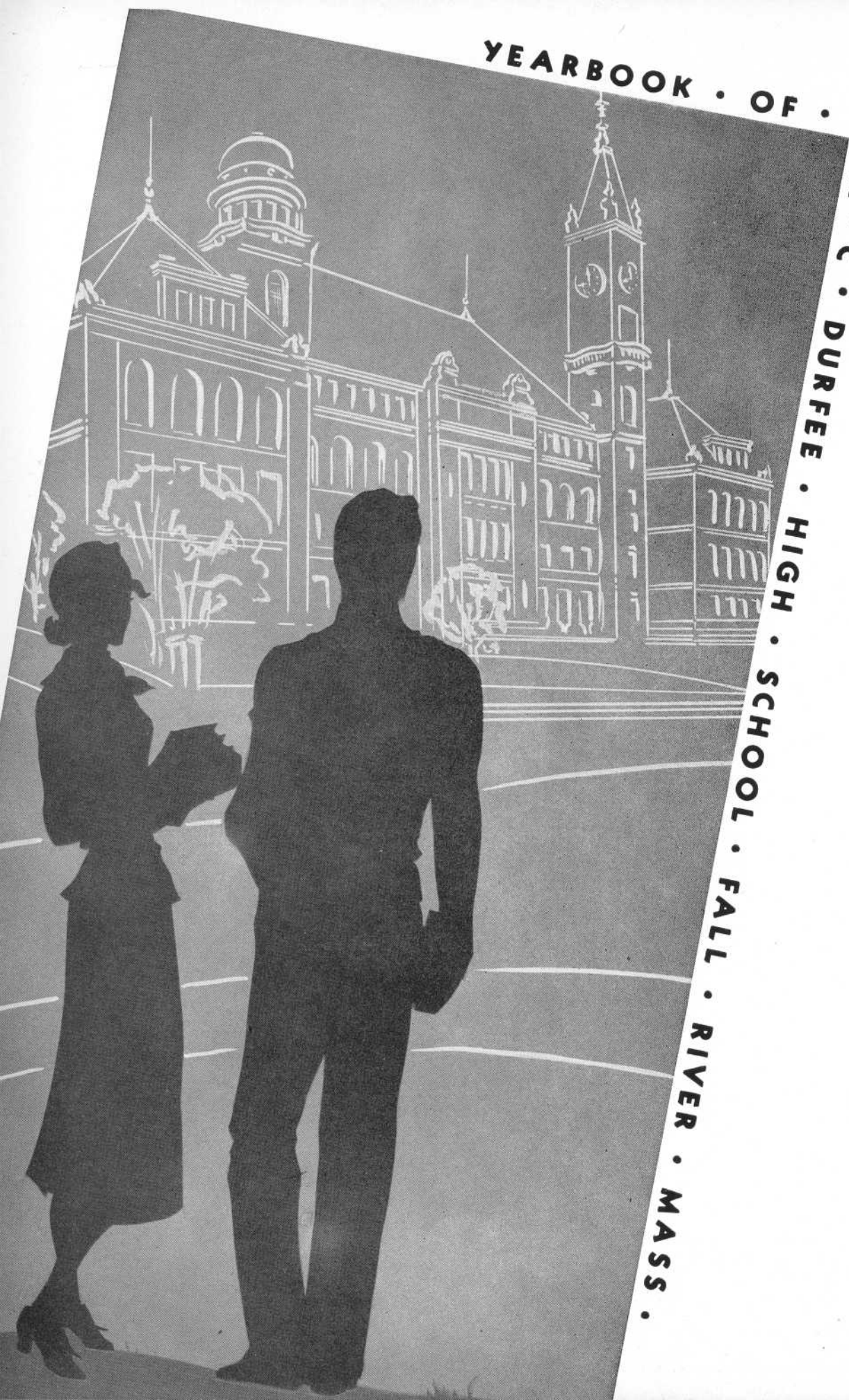


EX LIBRIS

Compiled and Edited by
CLASS OF 1938

Record Book

YEARBOOK • OF •
B • M • C • DURFEE • HIGH • SCHOOL • FALL • RIVER • MASS •



To

Miss Isabelle O'Neil

IN APPRECIATION OF HER GENEROUS
SERVICE, FRIENDSHIP AND SUPPORT,
THE CLASS OF NINETEEN HUNDRED
AND THIRTY-EIGHT DEDICATES THIS
VOLUME, THEIR RECORD BOOK

Dedication



WE of the Class of Nineteen
Hundred Thirty-eight offer this
volume of the RECORD BOOK
as a continuation of the glorious
history of Durfee High School.

GRATEFUL to the men and
women who have taught and in-
spired us, we leave Durfee trust-
ing that we may exemplify in our
lives the principles we have made
our own.

Foreword



SENIORS

ACTIVITIES

ATHLETICS

ADVERTISEMENTS

Contents

Editor-in-Chief

JOHN P. DEVITT

Assistant Editors

RAYMOND E. GREELEY

JAMES A. O'BRIEN

Business Manager

LAWRENCE J. MORIN

Assistant Business Managers

CYNTHIA A. DOUGLAS

GEORGE F. SUTHERLAND

Faculty Advisor

MR. HARRY P. LYNCH



The Staff



The Staff of the 1938 edition of the *Record Book* presents this volume trusting that it will meet with the approval of its readers — the Class of 1938.

Employing the most modern forms of design and development, we have built a book which we feel will be a fitting record of the glorious history of the Senior Class.

To keep before the graduate the story of his life at Durfee has been our aim. Upon this Record we feel that he can “stand upon the shoulders of Yesterday and scan the horizon of Tomorrow.”

Our Faculty Advisor, Mr. Harry P. Lynch, is sincerely thanked for his splendid assistance.

The Editorial Staff included John P. Devitt, editor-in-chief; Raymond E. Greeley and James A. O'Brien, assistant editors. Lawrence J. Morin, business manager; Cynthia Douglas and George Sutherland, assistants, comprised the Managerial Staff.

We trust, therefore, that as you thumb the pages of this book you will feel that we were worthy of publishing this *Record Book* for so great a Class.

The Faculty



CHARLES V. CARROLL

Principal

RALPH M. SMALL

HERBERT W. PICKUP

Vice Principals

Allard, Louis A.
Allen, Ralph C.
Ashley, Myron T.
Bent, Eugenie W.
Brightman, Ernest L.
Campbell, Emily B.
Carpenter, Mary L.
Carroll, Joseph O.
Carroll, Mildred V.
Carvalho, John A.
Chase, Winifred F.
Cleare, William M.
Coggeshall, Dexter E.
Cole, Lillian F.
Conlin, James F.
Connors, Mary B.
Cook, Berton E.
Corcoran, Mary
Coyle, George F.
Crowley, John T.
Dailey, Margaret G.
Davis, E. Christine
Delahanty, Edna U.
Dolan, Mary A.
Donnelly, John
Dow, Ruth N.

Downs, Edward
Duffy, Andrew L.
Earle, Charles C.
Fletcher, Ralph J.
Forster, Gladys G.
Foulkes, Carrie T.
Gottwald, Frederick J.
Harlow, Mabel
Harrington, Frederick
Harrington, John J.
Hathaway, Joseph R.
Hoar, George C.
Jouett, Blanche I.
Judge, Mary E.
Kaylor, William
Keefe, Margaret F.
Keeley, Ambrose F.
Kernan, Marion E.
Lane, Frank D.
Langford, Alice G.
Connors, Mary D.
Lawlor, Joseph J.
Lee, Mary
Leonard, Elizabeth L.
Lomax, Katherine F.
Lord, John G.

Lowney, Margaret F.
Lynch, Harry P.
Macdonald, Margaret E.
Maleady, Helen
Maranpot, Raymond P.
McCarthy, Anna G.
McCarthy, Mary F.
McHale, Rose E.
Mello, Victor E.
Miles, E. Estelle
Mitchie, George A.
Nawrocki, Stephen
Newkirk, Ruth W.
O'Connor, Margaret M.
O'Neil, Anne L.
O'Neil, Isabelle
Orcutt, Leslie W.
Pratt, F. Antoinette
Pritchard, Florence G.
Ramsay, Mabelle E.
Ryan, Mary E.
Salmond, Malcolm G.
Seagrave, Sylvia W.
Shea, Henry J.
Smith, Charles D.
Smolensky, Hilda I.
Spring, Mabel A.
Sullivan, Catherine R.
Sullivan, Daniel J.
Sullivan, Dorothy C.
Sullivan, Helena V.
Sullivan, Mary H.
Thompson, Marion R.
Torphy, Marion L.
Townsend, Ella
Townsend, John M.
Vosburgh, Ruby M.
Walsh, Anna F.
Wellington, Barbara
Williston, Amasa F.
Withrow, Helena H.

Mr. Joseph O. Carroll

Miss Mary B. Connors

Miss Alice G. Langford

Miss Louise C. Laporte

Miss Anna G. McCarty

Miss Rose E. McHale

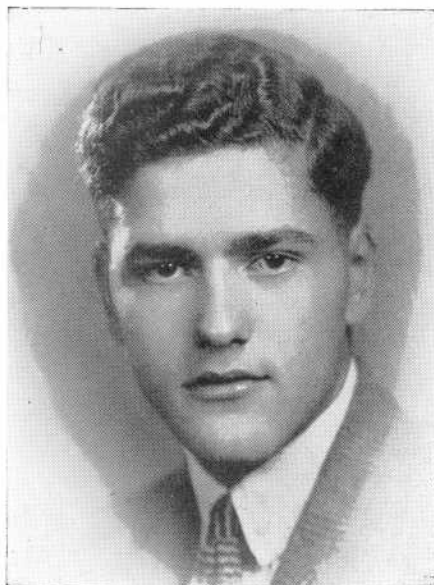
Mr. Ralph M. Small

Mr. Daniel J. Sullivan

... After Twenty-five Years

CLASS OFFICERS

Toly



THEOPHILO VINCENT
President

Barbara



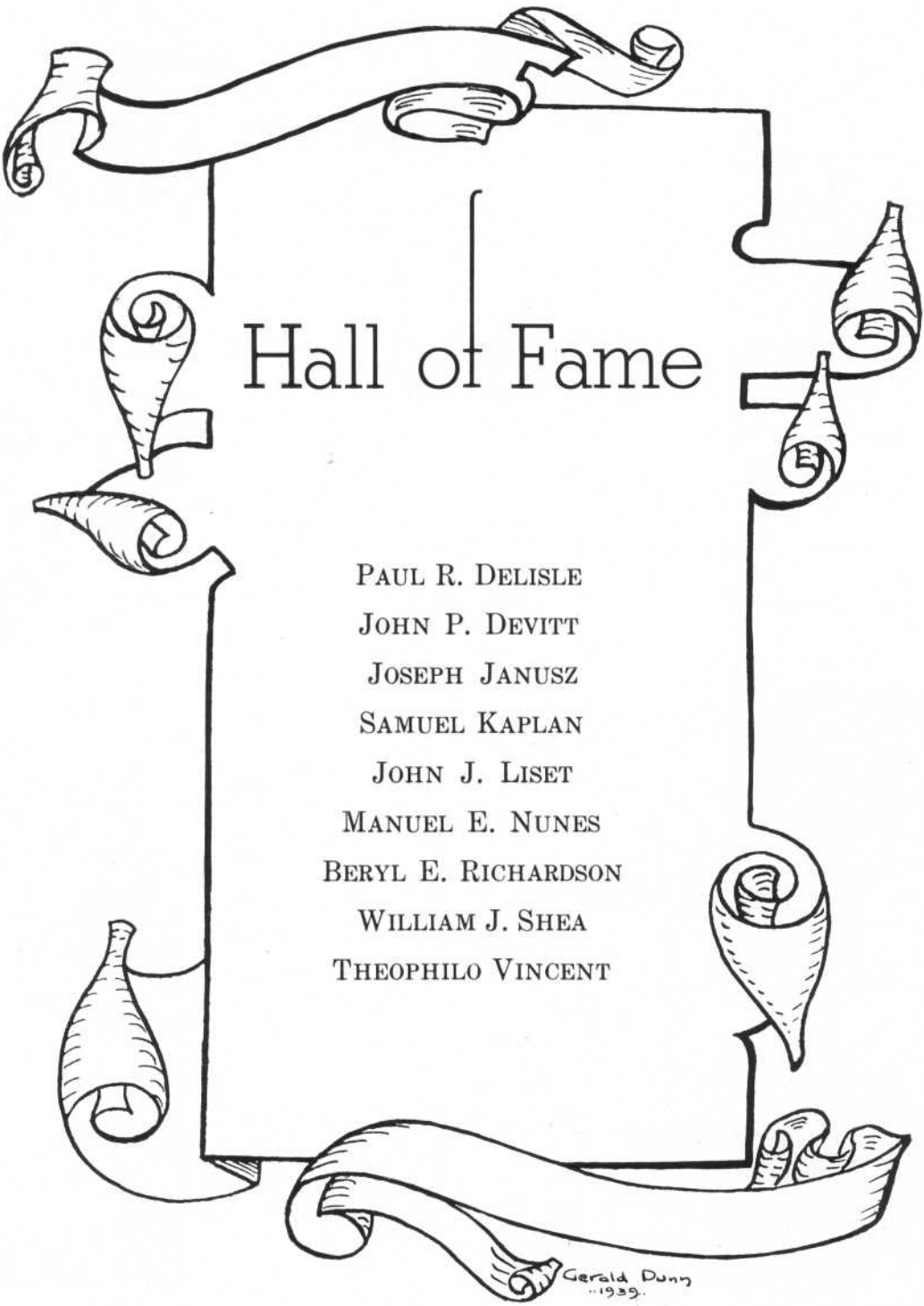
JUNE E. LEDOUX
Vice President



BARBARA A. MITCHELL
Secretary



Seniors

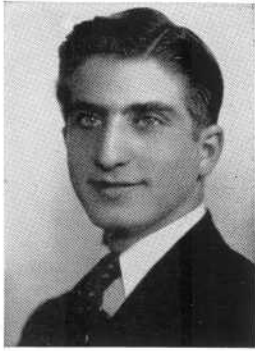


Hall of Fame

PAUL R. DELISLE
JOHN P. DEVITT
JOSEPH JANUSZ
SAMUEL KAPLAN
JOHN J. LISET
MANUEL E. NUNES
BERYL E. RICHARDSON
WILLIAM J. SHEA
THEOPHILO VINCENT

Gerald Dunn
1939

1938



ALPHONSE ABDALLAH
Traffic Squad 2, 3, 4
1st Lieutenant

"Ally"

"Bert"

BERTHA ADAMS
"Bert"



JESSE J. AGUIAR
Electrical Club 4

JOSEPH V. AGUIAR, JR.
"Speed"
Home Room Director
Commercial Club 4
Dramatic Club



RAYMOND J. ANCTIL
"Ray"

GEORGE ARONIS
"A La Greek"

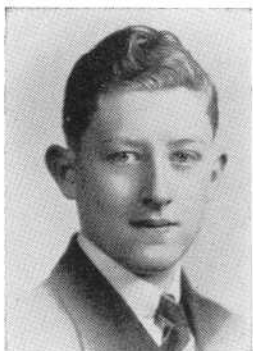


JOHN ARRUDA
"Johnnie"
Home Room Director 1, 3
Commercial Club 4

FLORENCE M. ARSENAULT
"Flossie"
Cheerleader



1938



RALPH WILLIAM ARTHUR, JR.

Ralph
"38"



HECTOR P. AUDET

"Buck"

Heck



CLAIRE OLYMPE AUDETTE

"Mignon" "Margo"

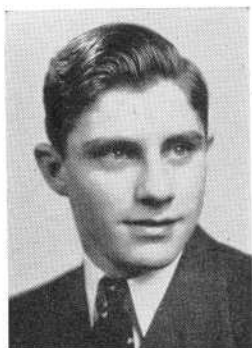
Gym Leader 4
Home Room Director 3
Traffic Squad 2

Margo



MARY JANE AYRE

"Scotty"



OVID BAIN

"Obe"



VERONICA FRANCES BAJ

"Virginia" "Vi"

Commercial Club 4
National Honor Society 3

Vi



VIRGINIA BARDSLEY

"Ginny"

Ferum 3, 4
Dramatic Club 3, 4
Literary Club 4
Hil'top Staff 4
Gym Leader 4

Ginny
lots of luck
Burt

RUTH L. BARNES

"Barney"

Commercial Club 4
Home Room Director



1938



ARTHUR BARRETT



JOHN MELVYN BARRY

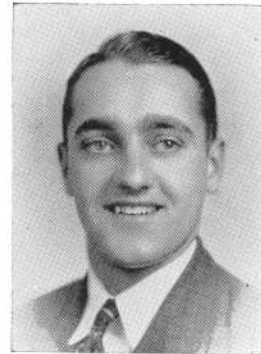
"Beano"

Commercial Club 4
Home Room Director 1

*"Beano"
"loads of luck"*



LILLIAN BEAUCHEMIN



CHESTER J. BEDNARZ

"Chet"

Football 2, 3, 4
Basketball 2, 3, 4
Baseball 3, 4
Varsity Club 3, Secretary 4
Health Club Vice-President 2
Commercial Club 4

Chet



JOSEPH F. BENTO



Gloria

GLORIA BERNSTEIN

Orchestra 2, 3



ANNA E. BEVILACQUA

Home Room Director 1
Health Club 2
Commercial Club 4



MORRIS BIELER

"Murray"

Track 2, 3, 4

1938



RAYMOND BIENVENUE

"Ray"

Commercial Club 4

Ray



STEVE BILINSKY

Varsity Club 4



NICHOLAS W. BILTCLIFFE

"Nick"



DORIS ELIZABETH BIRD

"Dot"



ALICE MAY BISHOP

"Bish"



MARY BISHOP

"Bish" "Cuddles"

Commercial Club 4



KATHERINE A. BLAHEY

"Kittie" "Kay" "K A B"

Commercial Club 4

National Honor Society 3



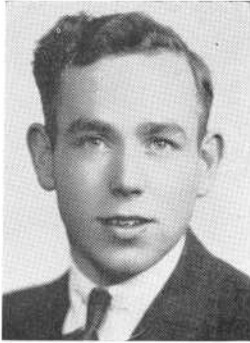
ALTHEA BLISS

Cheer Leader 4

Girls Numeral Club 4

Commercial Club 4

1938



HERBERT BOFF
Commercial Club 4

Herby

Dot

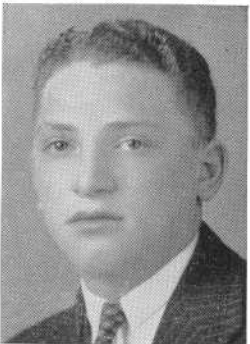
DOROTHY JOAN BOLGER
"Dot"
Commercial Club 4
Girls Numeral Club 2, 3, Pres. 4
Basketball 2
Volleyball 2, 3
Gym Leader 3, 4



RAYMOND JOSEPH BOND
"Bondy"
Home Room Director 1

"Roy"

RUSSELL BOOTH
"Russ"
Commercial Club 4

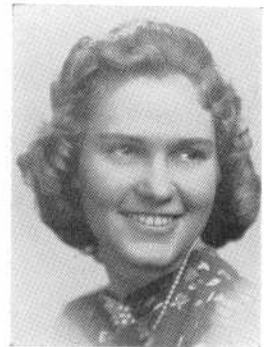


GEORGE BOR
"Georgie"
Baseball 3, 4

*lots of luck
"Georgie"*

Lillian

LILLIAN D. BORDEN
Commercial Club 4
Home Room Director 2, 3, 4
Health Club 2



WILLIAM BORGES

Bill

JOSEPH BORJE
Chorus 2, 3
Band 3, 4
Orchestra 4
Commercial Club 4



1938



IRMA VIRGINIA BOSI
Commercial Club 4

Irma

ALFRED BOTELHO
Commercial Club 4
Young Drivers Ass'n. 4
Traffic Squad



RUTH BOWER

Ruth

Amelia

AMELIA ASHTON BOYCE
Commercial Club 4



CATHERINE A. BOYLAN

FLORENCE BRADLEY
"Florrie"
Orchestra 2
Chorus 2

F. Bradley



JOSEPH BRANCO
Commercial Club 4
Traffic Squad 2, 3, 4

J. Branco

Grace

GRACE MARGUERITE BREEN
Literary Club 4
Dramatic Club 3, 4
Thespians 4



1938



CHARLOTTE MARIA BRIGGS

-Charlotte

RUTH D. BRIGGS

Literary Club 3, 4
Gym Leader 3
Forum 4
Commercial Club 4
Chorus 4

Ruth



ANGELA BROADBENT

"Angie"

Commercial Club 4

Laura

LAURA BRODEUR

Home Room Director 1
Commercial Club 4



JOHN FRANCIS BROOKS

"Johnny"

Football 3, 4
Basketball 3, Manager 4
Track 2, 3, 4
Office Aide 4

ANNIE MARGARET BROWN

Forum 3, 4
Literary Club 4
Gym Leader 4

Annie



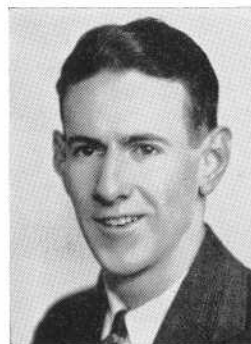
ELLWOOD HAROLD BROWN

Ellwood

EVERETT P. BROWN

"Brownie"

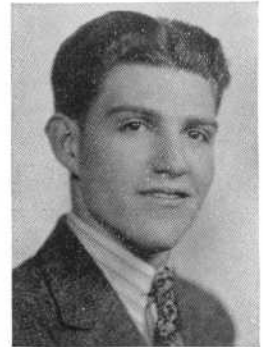
Chorus 2, 3, 4
Dramatic Club 4
Track 2, 3, 4
Traffic Squad 2, 3, 1st Lieut. 4



1938



EVELYN E. BURGESS
"Evy"
 Commercial Club 4



FRANK HENRY BURGESS
"Buddy"
 National Honor Society 3, 4
 Track 3
 Home Room Director 2, 3, 4



FRANCIS MICHAEL BURKE
"Frank"
 Commercial Club 4



JAMES L. BURKE, JR.
"Jimmy" "Burkey"
 Football 2, Asst. Mgr. 3, Mgr. 4
 Basketball Co-Manager 3
 Track 2, 3
 Traffic 2
 Chorus 3
 Young Drivers' Association 4



JOHN J. BURKE



ISABEL C. CABECEIRAS

Isabel



HELEN ROSE MARIE CAMPBELL
 Dramatic Club 3, 4
 Home Room Director 4

Helen

JOSEPH ANDREW CAMPBELL
"Joe"
 Forum 4
 Dramatic Club 4

Joe



1938



JOHN CANDEIAS



LILLIAN CANUEL
Commercial Club 4



DALIA JOAN CANULLA

"Dal" "Chip" "Jackie"

Commercial Club 4
Girls Numeral Club 3, 4
Traffic Squad 4
Gym Leader 3
Volleyball 3
Health Club 2



MARY ISABEL CAPETO
"Billie"



RENOLD CARDIN

"Ren"



ROBERT LEONARD CARPENTER

Asst. Manager Football 1, 2
Asst. Manager Basketball 2, 3
Office Aide 4
Young Drivers Association 4

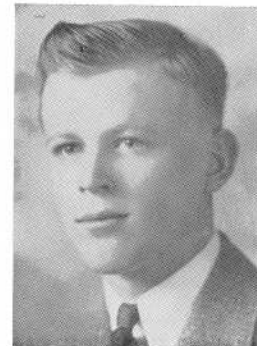


AGNES LOUISE CARREIRO

Girls Numeral Club 2
Forum 4
Library Aide 3, Vice-pres. 4
Advisory Board 4

Agnes

JAMES WINTON CARROLL
"Wint"





RITA M. CASAVANT

Commercial Club 4



FRANCES MARIE CASH

Commercial Club 4



GERTRUDE R. CASTONGUAY

"Gert" "Gertie"



CHARLES CHASSE



LILY CONSTANCE CHIN

Debating Team 4
Forum 3, 4
Dramatic Club 4
Chorus 4
National Forensic League 4
Hilltop Staff, Associate Editor 4



LUCIEN R. CHRETIEN

"Luky"

Electrical Club 3, 4

Chien



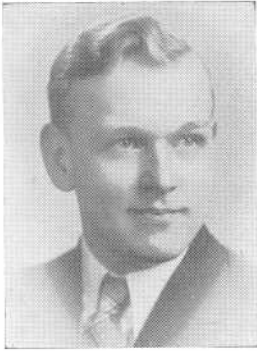
EDWARD A. CHRISTOPHERS

Orchestra 2
Vice President 1
Traffic Squad Lieut. 3, Capt. 4
Dramatic Club 4
Band 4
Hilltop Staff 4



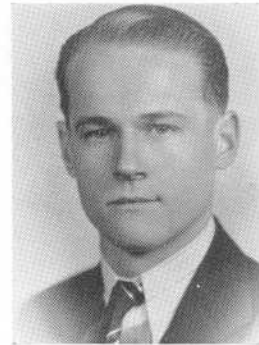
ALYCE THERESA CHRUPCALA

1 9 3 8



C. MARTIN CIBA

Literary Club 3, 4
Commercial Club 4
Hilltop, Associate Editor 4



DOMINICK ANDREW CICHON

"Nick"



ROBERT H. CLARKE

Advisory Board 4
Debating Team 4



EVERETT CLIFFORD CLARKSON

"Skipper"

Traffic Squad 4
Young Drivers' Association 4
Commercial Club 4



RICHARD CLEAVES

"Dick"

Commercial Club 4
Home Room Director 2



PHILIP CLIFFORD

Traffic 3



RUSSELL COCHRANE

"Russ"

Home Director 2, 3, 4
Commercial Club 4
Football 2



RITA MARIE COLEMAN

"Chick"

Commercial Club 4
Gym Leader 3
Home Room Director 1, 2
Traffic Squad 2



DOROTHY MAE COLYAR
Commercial Club 4



ELEANOR COMSTOCK
"EU"
Chorus



JAMES E. CONNOR



JOHN F. CONNOR



RUTH PATRICIA CONNORS
"Pat"
Secretary Health Club 2
S. A. A. Councillor 3
Home Room Director 3
National Honor Society 3
Commercial Club 4



JAMES A. COOK
"Cookie"
Commercial Club 4



BESSIE CORNER
Commercial Club 4
Home Room Director 3



Hazel
HAZEL COTTELL
Gym Leader 3
Commercial Club 4

1938



HENRY COTTRELL

Band 1, 2, 3, 4
Orchestra 1, 2, 3, 4

Ruth

RUTH C. COTTRELL



JULIENNE COURTEMANCHE

"Judy"

Commercial Club 4

TUFIC P. COURY

Commercial Club 4



RUTH VERONICA CRIBBINS

Commercial Club 4

ESTHER CROSSLEY



EDMUND CROWELL

Commercial Club 4

GRACE ELIZABETH CUSHMAN

"Gracie"

Commercial Club 4



1938

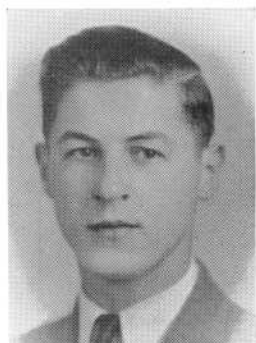


EDWIN SYDNEY CUSTER

Katherine

KATHERINE FELICITA CYR

Home Room Director 4
Dramatic Club 3, 4
Thespians 4
Photographic Committee 4



PETER J. CZAPIGA

Johnnie

JOHN RAYMOND D'ANDREA

"Johnny" "Bruno"

Home Room Director 1
Commercial Club 4



ANNETTE A. DAUPHINAIS

Commercial Club 4

HENRIETTA E. DAVIDSON

Orchestra 2, 3, 4
Commercial Club Sec. 4



MERTIS DAVIDSON

JANICE A. DAVIS

Home Room Director 2
Traffic Squad 2
Band 4
Pin and Ring Committee 3



1938

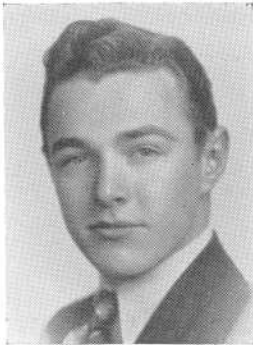


RITA MAY DAVIS
Literary Club



VIRGINIA WHALLEY DAVIS
"Ginny"

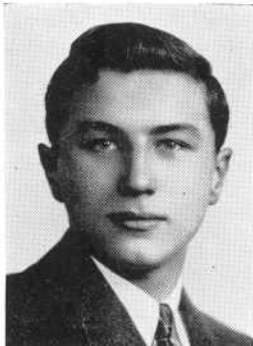
Ginny



HOWARD DAVOL
"Hy"



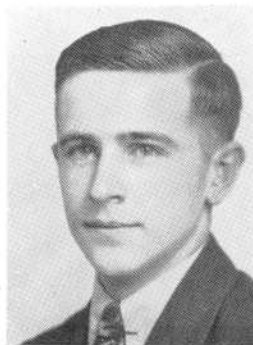
JAMES DEAN



JOSEPH HENRY DEBIASIO
Electrical Club 4
Home Room Director



EMELIA A. DEBONIS
Commercial Club 4



GERARD A. DELISLE

Paul

PAUL R. DELISLE

"Scoop"

Home Room Director 2, 3
Dramatic Club 3, 4
Thespians 4
Gift Committee 4
Forum 4
Hilltop Staff, Editor-in-Chief 4



1938



MARY A. DEMELLO



EDWARD J. DEMPSEY

ed



ALICE M. DENTON

Home Room Director 1, 4
Health Club 2
Honor Society 3, 4
Commercial Club 4



CHARLES E. DEPLITCH



FREDERICK L. DEVINE, JR.

"Fred"

Commercial Club 4



JOHN PATRICK DEVITT

"Jack" "Jackie"

Record Book Editor-in-Chief
Health Councillor 2
Office Aide 4
Baseball 1, 2



JANE M. DOBEK

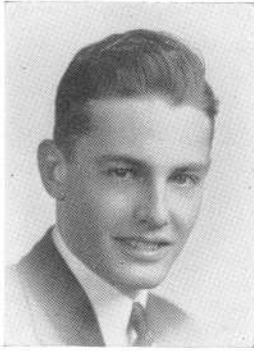
Commercial Club 4



JOHN F. DOHERTY

"Johnny"

1938



JOHN ANTHONY DOLAN
"Tony"



ANGELA DONAIS
"Angel"
Commercial Club 4

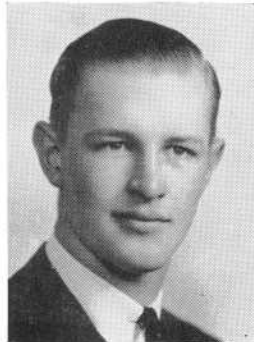


STATIA ANN DORAZ
Gym Leader 3
Commercial Club 4
Volleyball



CYNTHIA ALICE DOUGLASS
Secretary of Library Aides 4
Record Book Staff 4

Cynthia



CLIFFORD DOWTY
"Cliff"
President Office Aides 4
Traffic Squad



Mary
MARY DOYLE
"Tiny"
Commercial Club 4



ANNE DREWNIAK
Commercial Club 4

Claire

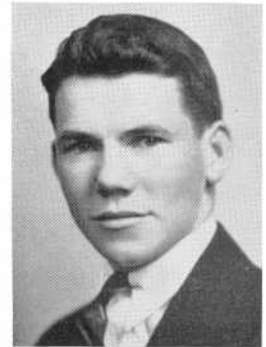
CLAIRE LOUISE DRISCOLL
S. A. A. Councillor 2
Chorus 2, 3, Pres. 4
Home Room Director 3
Pin and Ring Committee 3





DOROTHY DUBE

Commercial Club 4



PATRICK L. DUFFY

"Pat"

Commercial Club 4



GERMAINE DUFRESNE

"Gerry"

Commercial Club 4



MAE J. DUMAIS

Record Book Staff 4

Commercial Club 4

Pin and Ring Committee 3

Girls Numeral Club 2, 3, 4

Basketball 2

Volleyball 2, 3



DANIEL DURFEE

"Durf"

Traffic Squad 2



ALBERT DUSSAULT

"Tony"

Commercial Club 4



NORMA MARIE DYER

"Norm"

Home Room Director 1, 2

Girls Numeral Club 2, 3, 4

Basketball 2

Commercial Club 4



LEAH DYER

Commercial Club 4

1938



BEATRICE B. DYSON
"Bea" "Beaty"
 Commercial Club 4



GEORGE B. ELDON
"Ginger"



MYRA R. ELLIS
"Chubby"
 Commercial Club 4



EVELYN ENGLISH
"Billie"
 Commercial Club 4
 Basketball
 Girls Numeral Club 2, 3, 4



WILLIAM ENTIN
"Bill"
 Forum 2, 3, Pres. 4
 National Honor Society 3
 Debating Team 3, 4

Bill

SYDNEY ESKOW
 Band 3, 4



KATHLEEN M. FALLON
 Commercial Club 4



MARGARET FALVEY
"Peggy"
 Commercial Club 4

1938



JOHN T. FARIS



ELIZABETH A. FARREN
Commercial Club 4



LILLIAN RUTH FELDMAN

"Lil"

Home Room Director 1, 2
Commercial Club 4

"Sel"

SELMA FELDMAN

Dramatic Club 4
Literary Club 4
Forum 3, 4



DANIEL JOHN FENNELLY, JR.

S. A. A. Secretary 2
Vice President S. A. A. 3
Basketball 2, 3
Tennis 2, 3, Captain 4
Varsity Club 3, 4
Gift Committee 4

Best of Luck
Dan

IDALINA FERREIRA

"Lena"

Commercial Club 4



MARY FERREIRA

"Mamie"

SERAFINO FERREIRA



1938



JENNIE FIESAL
Home Room Director 3
Literary Club 4



CONSTANCE C. FINDLAY
"Connie"
Orchestra 4
Chorus 4

Connie



ELIZABETH ANNE FINGLIS
"Bessie"

Bessie



FRANCES FISHER
"Franny"
Home Room Director 2
Commercial Club 4



JOHN JOSEPH FITZGERALD
"Fitz" "Fritz"



GLADYS FITZGERALD
"Fitzy"
Girls Numeral Club 2, 3, 4
Gym Leader 3



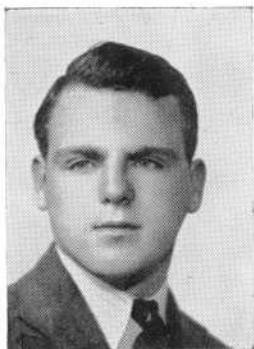
MARY C. FITZGERALD
"Fitzie"
Commercial Club 4

*Best of Luck
Fitzy*



RITA JOANNE FITZGERALD
"Fitzie"
Dramatic Club 3, 4
Gym Leader 4

1938



JOHN P. FLEMING

"Peanuts"

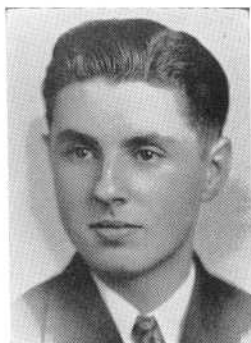
Commercial Club 4
Home Room Director 2



EDWARD J. FOLEY

"Ed"

Home Room Director 1, 2
Commercial Club 4
Office Aide 4



WARREN M. FOLEY

Track 4

jean

JEAN FORD

H. R. Dir. 3, 4



HERBERT B. FORMAN

"Herb"

Traffic Squad 4
Young Drivers Association 4
Commercial Club 4



EVELYN A. FORTIN



LEAH FORTUNA

Commercial Club 4



TERESA A. FOSTER

Commercial Club 4

1938



RITA JEANNETTE FOURNIER

"Reet"

Commercial Club 4

*Luck,
Keri*

JAMES FRAZER

Baseball 3, 4
Home Room Director 4
Commercial Club 4
Varsity Club 4



THEODORE FRIEDMAN

"Ted"

Literary Club 2, 3
Forum 2, 3, Vice-pres. 4
Dramatic Club 3, 4
Chorus 2, 3, 4
Track 2, 3, 4
Debating 4, Hilltop Staff 4

Barbara

BARBARA FULLER

"Barb"

Home Room Director 2
Orchestra 3, 4
Chorus 3, 4



JOSEPH FURMAN

ELIZIERO FURTADO



LILLIAN E. FUSS

Commercial Club Treasurer 4

JOSEPH GAGE

"Joe"

Commercial Club 4



1938



ALBAN GAGNE

"Al"

Home Room Director 1
Office Aide



AGNES M. GAGNON

Commercial Club 4



JOSEPH GALUSKA

"Joe"



RITA GAMELIN

Commercial Club 4



MARGUERITE GARDELLA

Commercial Club 4



FRANCIS GARELL

"Frank"



IRVING GARRICK



ROBERT LEO GAUDETTE

"Bob"

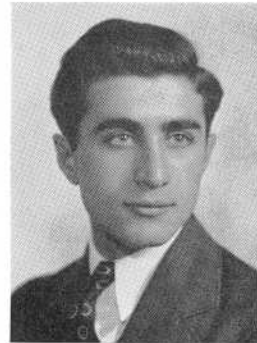
S. A. A. Councillor 1
Orchestra 1, 2, 3, 4
Commercial Club 4



JEANNETTE GAUTHIER

"Jean" "Frenchy"

Home Room Director 2
Commercial Club 4



JOHN W. GAZZERO

"Jack"

Basketball 1, 2, 4
Baseball 2, 4
Commercial Club 4



GRACE E. GEDDIS

Commercial Club 4



CLAIRE LORRAINE GENEREAU

Commercial Club 4



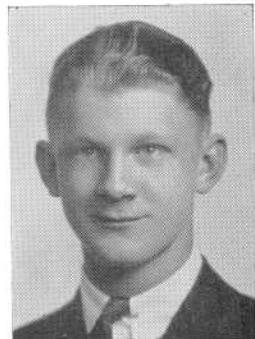
MARGARET GIBNEY

Commercial Club 4



CATHERINE E. GILL

"Kay"



CARLETON GILLETT

"Carl"

Commercial Club 4



JANE GLOWACKI

Commercial Club 4



DOROTHEA J. GOLDEN
"Dot"
 Commercial Club 4



WALLACE LEO GOLDSTEIN
"Wally"
 Hilltop Staff 4
 Orchestra 3, 4



HARRY GOLUB
 High Health Councillor 2
 Forum 2, 3, Sec. 4
 Literary Club 2, 3, 4
 S. A. A. Councillor 3
 Traffic Squad 2, 3, Lieut. 4
 Dramatic Club 3, Sec. 4



WILLIAM JOSEPH GOMES
 Office Aide 4
 Young Drivers Association 4



JOSEPH FELIX GONDELA



ARTHUR H. GOODWIN
 Health Club 2
 Orchestra 2
 Traffic Squad 2
 Band 2, 3, 4, Leader 3, 4



RUTH ANNE GOOTMAN
"Rufus"
 Hilltop 3, Bus. Mgr. 4
 Commercial Club 4
 Home Room Director 2, 3



MARCEL J. GOSCIMINSKI
"Marky" "Gus" "Polak"
 Commercial Club 4
 Home Room Director 4
 Baseball 2, 3, 4
 Basketball 2, 3
 Young Drivers Association 4

1938



RITA GOSS

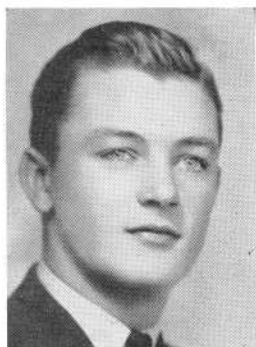
Commercial Club 4



ELIZABETH MARGARET GRACE

"Betty"

Commercial Club 4
Health Club 2



RAYMOND EDWARD GREELEY

"Ray"

Football 2, 4
Basketball 3
Commercial Club 4
Varsity Club 3, 4
Pin and Ring Committee 3
Asst. Editor Record Book 4



HELEN K. GREEN

"Greenie"

Literary Club 4
Dramatic Club 4
Thespians 4



HENRY B. GREENBERG

"Hank"

"Hank"

RUTH ANNE GREENHALGH

Home Room Director 3, 4
Commercial Club 4



EDNA M. GREGORY

Commercial Club 4



CLAIRE RENA GRENIER

"Chick" "Butch"

Hilltop, Assistant Editor 4
Commercial Club 4
Forum 4

1 9 3 8



CHESTER P. GRINNELL, JR.
"Farmer"

KENNETH GRINNELL



MARJORIE GRINNELL
"Margie"
married '38

JOHN LEONARD GRONDIN
"Jack" "Hank"



WALTER J. GRUSZCZENESKI

REGINA MARGARET GUILFOY
"Geney"
"Geney"



HAROLD HADLEY
"Buck"

NORMAN E. HALL
Commercial Club 4





HAZEL ADELAIDE HANDFIELD

"Handy" "Han"

Home Room Director 3
Commercial Club 4



MYRTLE HANNON

"Myrt"

Gym Leader 4
Home Room Director 1
Commercial Club 4



JOSEPHINE J. HARACZ

"Jo"

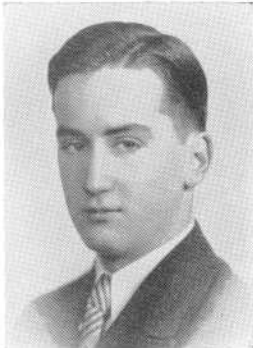
Gym Leader 3, 4
Commercial Club 4



ERNEST H. HARGREAVES

"Ernie"

Office Aide 4
Traffic Squad 3
Electrical Club 2



JOSEPH DANIEL HARRINGTON

"Joe" "Hank"

Home Room Director 2



KATHLEEN HARRINGTON

Kathleen



PATRICK H. HARRINGTON, JR.

"Pat"

National Honor Society, President 3, 4
Forum 2, 3, 4
Debating 3, 4
Secretary National Forensic League 4
Dramatic Club 4
Young Drivers Association 4

Pat

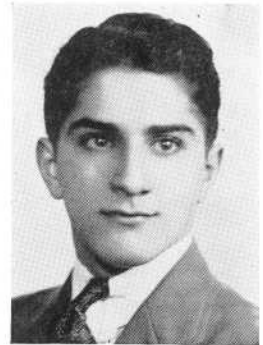
THOMAS HARRINGTON



1 9 3 8



HAROLD C. HARTLEY
"Timber"



PHILIP W. HASHIM
"Phil"
Commercial Club 4
Traffic Squad 2, 3, 4



ROBERT WILBUR HATHAWAY JR.
"Bob" "Hap"
Basketball 2
Asst. Manager Football 2
Home Director 2
Dramatic Club 4



HELEN F. HAWTHORNE
Commercial Club 4



SHIRLEY IRENE HAYDEN
"Lee"



EUNICE ALICE HENDERSON
Home Room Director 4

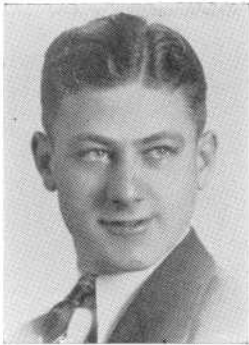


CHARLES V. HETHERINGTON
"C. V."
Orchestra 2, 3, Concert Master 4
Home Room Director 4



RUFUS K. HILLIARD
"Ruf"
Traffic Squad 2, Lieut. 4

1938



JOHN PHILIP HILTON
"Johnnie"

Lucille

LUCILLE HINDLE
Commercial Club 4
Health Club 2



EUNICE MAY HODGSON
"Necy"

Eunice

MARGARET ELIZABETH HOLEN
"Betty"
Health Club 2
Home Room Director 3, 4
Commercial Club 4



CHARLES H. HOLT, JR.
"Chuck" "Blonde"

KENNETH HORROCKS
"Barney"
Electrical Club 4
Health Club 2



ROBERT ROY HOSFORD

KATHERINE HOSKING
"Kay"
Chorus 3, 4
Commercial Club 4
Home Room Director 4



1938



RUTH HOWARTH
Commercial Club 4



ADRIAN J. HUGHES
"U-Z"



LOUISE ANN HUGHES
"Weezie"
Chorus 1, 2, 3, 4



WILLIAM HOLLAND HUTCHINGS JR.
Basketball 1, 2, 3
Office Aide 3, 4



LEDORA ISIDORIO
Commercial Club 4



LOUIS LEONARD ISSERLIS
"Lennie"
Young Drivers Association 4
Health Club 2
Dance Committee 4
Photographic Committee 4



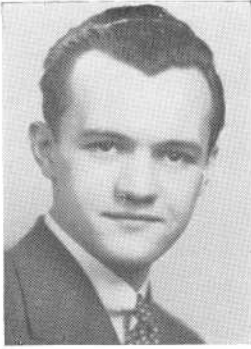
MARY IVANCIN
Commercial Club 4

Kay

KATHLYN JACKSON
"Kay"



1938



RUSSELL BRACE JACKSON
"Russ"
Young Drivers Association 4



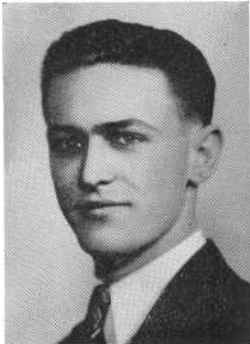
JOSEPH JANUSZ
"Joe" "Peevo" "Snooky"
Track 4
Varsity Club 4
Football 2, 3, Capt. 4



FLORENCE MARY JEAN
"Jimmie"

Claire

HELEN CLAIRE JEFF
"Smiles"
Home Room Director 2



GEORGE W. JENKINSON
Commercial Club 4
Track 3, 4



FRANCIS E. JEROME



ELAINE ALICE JETTE

RUTH MURIEL JOHNSON
"Jo"
Home Room Director 3



1938



VIRGINIA FLORENCE JOHNSTON

Gym Leader 3, 4 "Gin"

Virginia

ALBERT JUSSAUME

"Al"
Commercial Club 4
Home Room Director 3, 4



RUSSELL JUST

IRENE A. KACZENSKI

Health Club 2
Commercial Club 4



JANE A. KACZYNSKI

Commercial Club 4

PHILIP KALIF

Traffic Squad 2, 3, 4



CHARLES T. KALIL

Traffic Squad 2, 3, 4
Office Aide 4

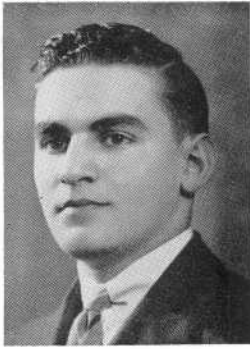
Charlie

Esther

ESTHER KAPITANOFF

"Kapi"
Chorus 3, 4





SAMUEL KAPLAN

"Kap"

Commercial Club 4
Varsity Club 3, 4
Library Aide 2, 3, 4
Basketball 2, 3, Captain 4
Record Book Staff 4
National Honor Society 3, 4



KENNETH SPRINGER KAY

"Ken"

Dramatic Club 4



JANE FRANCES KEEFE

"Keefey"

Commercial Club 4



MARGARET ANN KEELEY

Home Room Director 4
Commercial Club 4



AUDREY MUNSON KELLEY

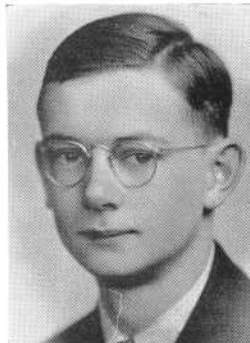
"Auds"



NORMAN JOHN KENNEDY

"Norm"

Traffic Squad



EDWARD KENNEY

Dramatic Club 4
Debating Team 4
Forum 4

Marion

MARION BERNICE KENNEY

Gym Leader 3, 4



1938



MARY ELIZEBETH KIDD

Hcom Room Director 2

Henry

HENRY FREDERICK KISPERT

Orchestra 2
Traffic Squad 2, 3



MARGARET MARY KITCHEN

"Peggy"

Dramatic Club 3, 4

OLGA KLIMKA



ANITA R. KNIGHT

"Skippy"

Traffic Squad 2
Home Room Director 1, 2
Commercial Club 4

EDGAR COLBY KNOWLTON, JR.

"Ed"

Literary Club 2, 3, 4—Sec. 2, 3
National Honor Society 3, 4
Library Aide 2, 3, 4—Pres. 3
Dramatic Club 4
Advisory Board 4



JOSEPH N. KOSINSKI

HELEN THERESA KOSOWICZ

Commercial Club 4



1938



AMELIA ELEANOR KRET



EVELYN M. LAFLEUR

"Ev"

Home Director 3
Chorus 4



NORMAND C. LAFORST

"Duke"

Young Drivers Association 4
Office Aide 4



ULRIC LAMOUREUX, JR.

"Lefty"



YVONNE G. LANGLAIS

"Vany"

Commercial Club 4



RUTH C. LARRIVEE

Commercial Club 4



IRENE LASH

Dramatic Club 3, 4
Thespians 4
Young Drivers Association 4

Irene

EVELYN MAY LASSONDE

Commercial Club 4





ANNE LEACH
Commercial Club 4



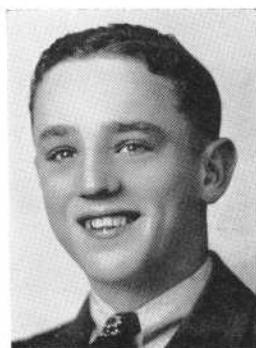
MARJORIE R. LEACH
"Marje" "Midgie" "Smudge"
Commercial Club 4
Health Club 2
Girls Numeral Club 3, 4



HELEN ANNE LEARY
Gym Leader 4
Commercial Club 4



JANE CLAIRE LECOMTE
Girls Numeral Club 2, 3, 4
Commercial Club 4
Gym Leader 3, 4
Volleyball 2, 3
Basketball 2



LEONIDAS AIME LECOMTE
"Leo"
Commercial Club 4



ELIZABETH RUTH LEDDY
Commercial Club 4
Traffic Squad 3
Girls' Numeral Club 2, 3, 4



JUNE LEDOUX
Vice-President 4
Dramatic Club 3, 4
Fin. Sec. 4, Sec. 1
Home Room Director 2, 4
Chorus 2, 3, 4



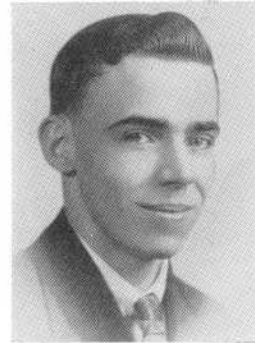
DOROTHY LEE
"Dot"
Commercial Club 4

1938



LUCY L. LEEDHAM

"Lue" "Luce" "Lulu"
Home Room Director 3
Gym Leader 3
Commercial Club 4



ANDRE LEMAY

"Limy"



GERTRUDE LEVESQUE

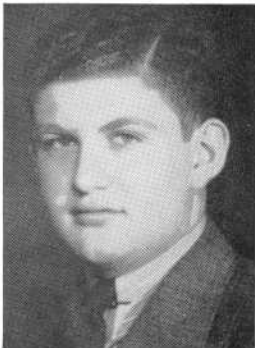
"Gert" "Gerry" "Trudy"

Gert



MADELINE G. LEVESQUE

Madeline



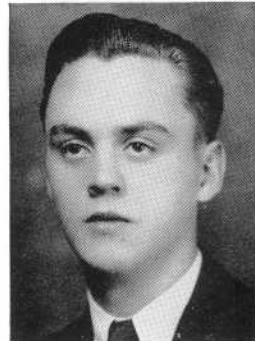
SUMNER LEVIN

Debating Team 3, 4
National Forensic League, Pres. 4
Forum
Football 2, 3
Chairman Dance Committee 4
Record Book Staff 4

Sumner

ROMEO JOSEPH LEVRAULT

Home Room Director 4
Commercial Club 4



LOUIS LIPIS

"Red Litmus"



MADELINE LISCHNER

"Maddie"

Commercial Club 4

1938



JOHN JOSEPH LISET

"Liz"

Home Room Director 2, 3
Dramatic Club 3, President 4
National Thespians 3, 4

Lis
John

HELEN SHIRLEY LITTLE

"Shirl"

Shirley



JAMES LITTLE

"Shamus"

Electrical Club 3, Sec. 4

EDNA RITA LORD

Commercial Club 4
Home Room Director 1, 4



DORIS EVELYN LUCAS

JAMES F. MACDONALD

"Mac"

Commercial Club 4



LILLIAN MACHADO

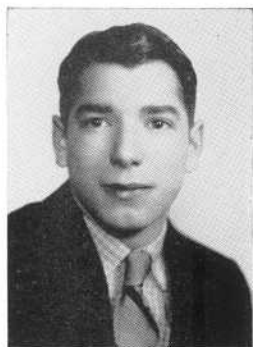
Commercial Club 4

PALMIRA MACHADO

Commercial Club 4



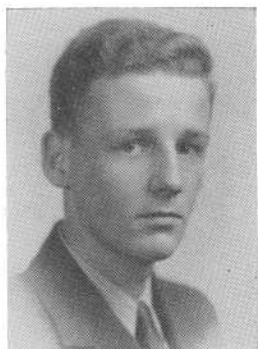
1938



ROBERT MACHADO
"Bob"



MILDRED F. MACOMBER
Commercial Club 4



CHARLIE NORMAN MAGIEL
"Norm"



HELEN LOUISE MAHER



MARGARET ELIZABETH MAHONEY



LLOYD DAVID MAKER
"Dick"

Dramatic Club 3, 4
Young Drivers Association 4
Tennis 2, 3, 4
Thespians 3, 4
Varsity Club 3, 4
Traffic Squad 2



HELEN C. MALINOWSKA

Commercial Club 4
Volleyball 2, 3
Basketball 2
Gym Leader 3, 4



JOHN FRANCIS MALONE
"Rusty"

1938



KATHERINE MALLOY
"Kaye"

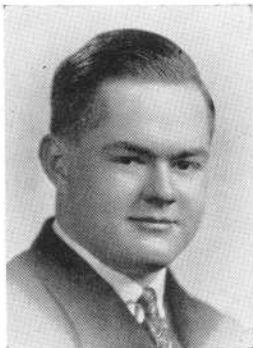
Lo

LOIS MANCHESTER
"Lo"
Nat. Honor Soc. 3, Sec. 4
Home Room Director 2, 3
Health Club 2
Dance Committee 4



BEULAH MAY MANN

LAWRENCE MANSFIELD
"Buddy"



ROBERT MARCOUX

Bob Luck

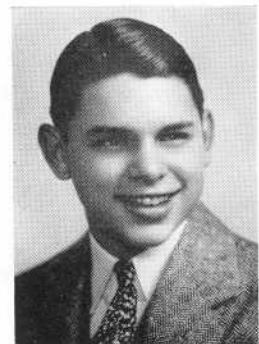
EDWARD MAREK
Commercial Club 4
Football 3



ARTHUR MARGARIDO
"Blue Hill"

Varsity Club Vice-Pres. 4
Football 2, 3, 4
Basketball 2, 3
Young Drivers Association 4

EDWARD NATHANIEL MARKELL
Dramatic Club 3, 4
Forum 3, 4
Home Room Director 4



1938



ARTHUR EDWARD MAROIS



LUCY CHRISTINE MAROIS
Commercial Club 4



ALFRED MARTIN
"Freddy"



IRENE ANITA MARTIN
"Renee"
Commercial Club 4



KATHERINE MARTIN
"Kay"
Commercial Club 4
Gym Leader 3, 4
Literary Club 4



EDWARD F. MASON, JR.
Young Drivers Association 4
Traffic Squad 2



MILTON MASON
"Milt"
Traffic Squad 2, 3, Lieut. 4



JOHN MASSOUD
"Mac"

1938



ARTHUR C. MATTOS
"Pee Wee"
 Young Drivers Association 4



VERA MATWEJKO
"Paula"
 Gym Leader 3
 Commercial Club 4



JOSEPH L. MAY
 Commercial Club 4



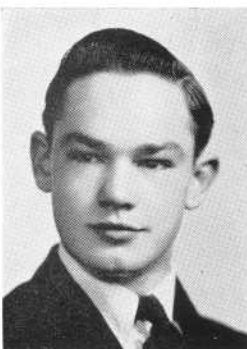
RITA M. MAY
 Gym Leader 4
 Commercial Club 4



FREDERICK L. MAYO, JR.
 Home Room Director 2, 3, 4
 Health Club Council 2
 National Honor Society 3
 Pin and Ring Committee 3

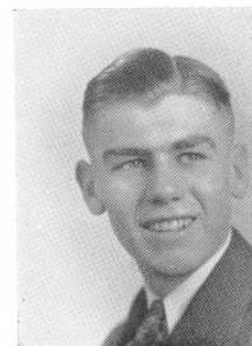
Janet

JANET NICHOLSON McAFEE
"Jane" "Jan" "Mac"



NORMAN M. MCCABE
"Mac" "Rover"
 Traffic Squad 3
 Track 4
 Electrical Club 4

RAYMOND T. McCANN
"Mac"



1938



RALPH RAYMOND MCCROSSON
"Mac"
Office Aide 4



MADELINE M. McDERMOTT
Home Room Director 2
Commercial Club 4
madeline



JAMES THOMAS McDONALD
"Mac"
Commercial Club



JOHN T. McDONALD
"Mac"

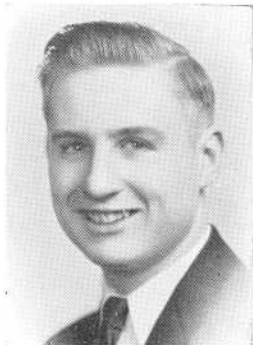


THOMAS R. McDONALD
"Red" "Mac"

Mac



JOAN McDOUGALL
"Jo"



JOSEPH ARTHUR McELROY
"Mac"
Traffic Squad 2, 4



EMILY F. MCGOUGH
"Em" "Emmy"
Dramatic Club 3, 4

1938



FRANCIS M. MCHENRY
"Mac" "Proddy"
 Commercial Club 4

Mary

MARY A. MCINTYRE
"Mac"
 Commercial Club 4
 Gym Leader 3, 4



DOROTHY McLAUGHLIN

Dot

DOROTHY McNULTY
"Dot"
 Commercial Club 4



DORIS VERONICA MCTAGUE
"Dot"
 Commercial Club 4

MARGARET JOAN MCWHINNIE
"Peggy"
 Chorus 4



JOHN MEDEIROS

LOUIS CONLEY MEDEIROS
"Lefty"
 Commercial Club 4



1938



AIRES MELLO
"Shoes"
 Commercial Club 4

Hilda

HILDA NORMA MELLO
 Gym Leader 3
 Commercial Club 4



JOHN C. MELLO

SHIRLEY MERETSKY
"Sherry"
 Commercial Club 4



JULIETTE B. METAYER
"Julie"

NORMAND MICHAUD



VINCENT O. MICHAUD
"Vinnie"

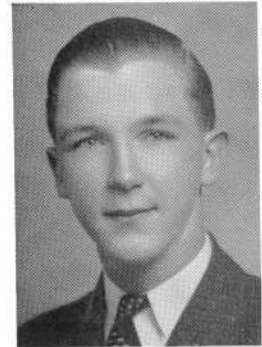
NORMAND J. MICHEL
"Buddy"
 Commercial Club 4



1938



FRANKLIN S. MILLER
"Dutchy"
 Commercial Club 4



CALVERT EDWIN MILLS
"Cal"
 Commercial Club 4



MARGUERITE MILLS
"Meg"
 Gym Leader 3, 4
 Commercial Club 4



EMMA MIRANDA
"Emmy"
 Commercial Club 4



FRANK W. MIS

Barbara

BARBARA MITCHELL
 Commercial Club 4
 Home Room Director 2, 3, 4
 Secretary of Senior Class
 Girls Numeral Club
 Basketball 2

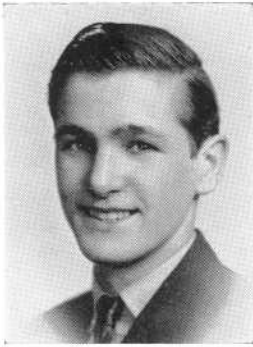


LAWRENCE F. MITCHELL
"Mitch" "Fat"
 Home Room Director 1

WILLIAM MITCHELL
"Mitch"



1938



ARTHUR G. MOCKAS



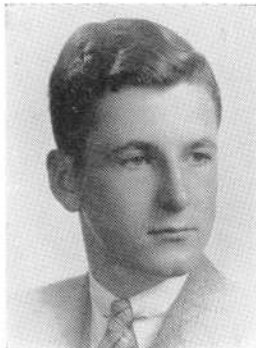
EDWARD MONIZ
"Eddie"



MARGARET MONSOUR
"Connie"
Commercial Club 4



married '38'
"Nat"
NATALIE MOORE
"Nat"
Home Room Director 1
Commercial Club 4



LAWRENCE JOSEPH MORIN
"Larry" "Doc"
Record Book Staff, Business Mgr.
Home Room Director 2, 3
National Honor Society 3, 4
Library Aide 4
Young Drivers Association 4



Larry
FRANCES MAUD MORRIS
"Fran"
Home Director 2
Commercial Club 4
Health Club 2



HELEN GERTRUDE MORRIS
"Liberty"
Commercial Club, Vice-Pres. 4
Home Director 4
Health Club 2



CLAIRE ELIZABETH MORRIS
Chorus 4
Dramatic Club 3, 4
Thespians 3, President 4



NORMAN MORRISSEY

Dick
RICHARD ALLAN MORSE

"Dick"

Dramatic Club 3, Vice-Pres. 4
Traffic Squad 2, 3
Thespians 4
Young Drivers Association 4



EILEEN ELISABETH MULLEN

Commercial Club 4

FREDERICK DALE MULLEN

"Moe"



ARINDA MARY MURPHY

"Rinda"

Commercial Club 4

EDMOND S. MURPHY

"Murph"



EDWARD FRANCIS MURPHY

"Ed"

Dramatic Club 4

MICHAEL ALOYSIUS MURPHY

"Mike" "Murpf"

Commercial Club 4



1938



WILLIAM FRANCIS MURPHY
"Bill" "Murph"



JAMES MYCOCK
Electrical Club 4



VIRGINIA L. MYCOCK
"Ginny"
Traffic Squad 3

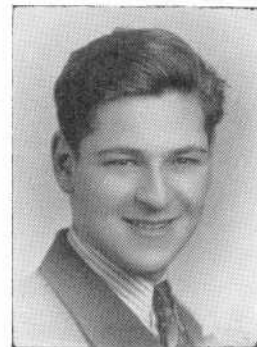
Ginny



HELEN K. MYTHOWICZ
Commercial Club 4



JEROME P. NATHANSON
"Jerry"
Orchestra 2, 3, 4
Band 2, 3, 4
Home Room Director 3
Young Drivers Association 4



MILTON NERENBERG
"Hershy"
Football 2



MARGARET E. NESTOR
Commercial Club 4



ALTHEA NICHOLSON
"Al"
Commercial Club 4

1938



MURIEL H. NITSCHÉ

Home Room Director 1, 2, 3
Commercial Club 4

ETHEL M. NORRY

Chorus 4
Thespians, Secretary 4
Dramatic Club 4



MANUEL E. NUNES

"Manny"

President of S. A. A. 4
President of Literary Club 3
Varsity Debating Team 3, 4
Hilltop Staff 4, Forum 2, 3, 4
Dramatic Club, Thespians 3, 4
National Forensic League 3, 4



JAMES A. O'BRIEN

"Briney"

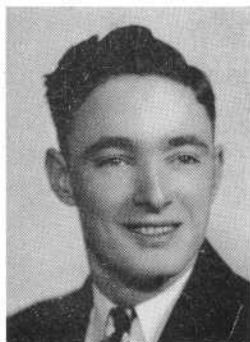
Record Book Staff 4
Commercial Club 4



WILLIAM J. O'BRIEN

"Bud"

Home Room Director 2
Commercial Club 4



CATHERINE MARIE O'CONNELL

"Kay"

Commercial Club 4



EILEEN O'CONNELL

"Mickey"



EVELYN TAVARES OLIVEIRA



1938



EDWARD O'NEIL
"Eddie"



DOROTHY ORMEROD
"Dottie"

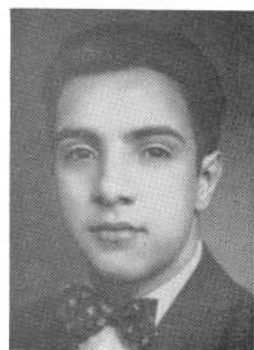


WILLIAM S. ORMEROD
"Bill"

Band 2, 3, 4
President 4
Orchestra 4



RUSSELL OUELLETTE



HERMAN PACHECO



ANNA RUTH PACKER



LUCY PAIVA

"Joy"
Commercial Club 4



BEATRICE A. PARADIS

"Bee" "GeeBee"
Commercial Club 4

1 9 3 8



LORRAINE J. PARADIS

Dramatic Club 3, 4
National Thespians 3, 4, Strategius 4
Chorus 4
Commercial Club 4



RAYMOND EDWARD PARISE

"Raz" "Stooge"



BERNADETTE B. PARISEE

"Bernie"



ALICE PAUL

Gym Leader 2, 3
Commercial Club 4

Alice



FERNANDE PAULHUS

"Fern"



ANTONIO PAVAO

Commercial Club 4



DORIS M. PAYER

"Dot"

Commercial Club 4
Gym Leader 3



JOSEPH PEREIRA

1938



MARY PEREIRA

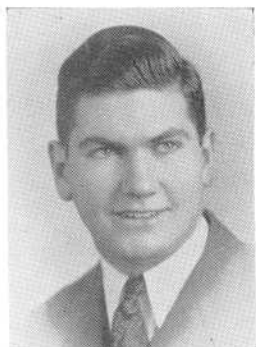
Mary



LOUISE PERRY

"Lou"

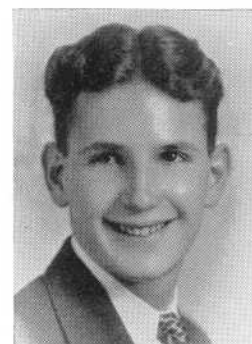
Gym Leader



WILLIS T. PETTEY, JR.

"Bill"

Young Drivers Association 4



RUSSELL DAVID PICHE

"Russ"

Home Room Director 3
Track 4



HELEN G. PIETRASZEK



CECILIA MARY PIKUL

Health Club 2
Home Room Director 3
Girls Numeral Club 3, 4
Commercial Club 4



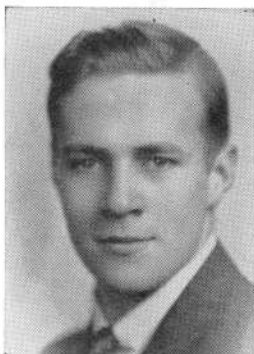
DENNIS A. PIRES

"Lefty" "Denny"



ALBERT E. POIRIER

"Al"



DONALD POMFRET

"Don"

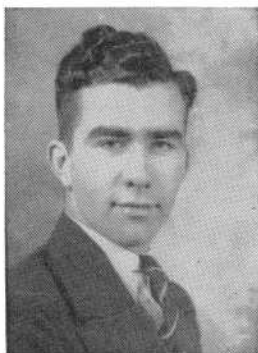
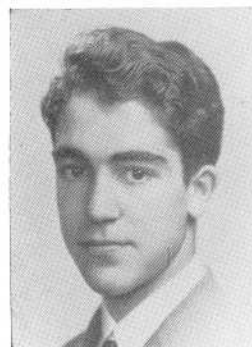
Football 2, 3, 4
Track 3
Varsity Club 3, President 4
President Class 3
Pin and Ring Committee 3
Health Club 2

Don

EDWARD JOSEPH PONTE

"Ed" "Eddy"

Commercial Club 4
Photography Committee

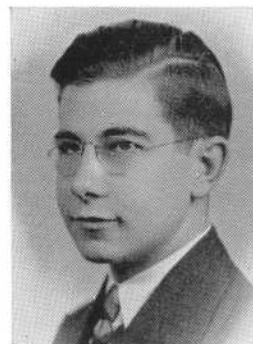


GEORGE W. POOLE

WILLIAM FRANCIS POOLE

"Bill"

Young Drivers Association 4



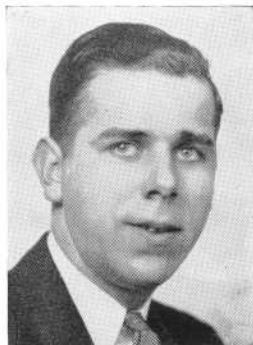
RUTH POTTS

"Ruthie"

married '37

HONORA E. POWERS

Gym Leader 4



NORMAND R. PRATT

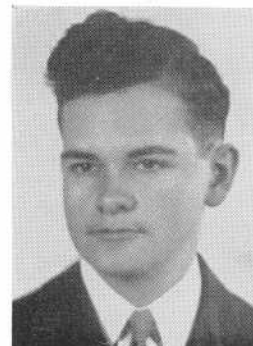
"Norm"

JOSEPH LOCKE PRESBREY, JR.

"Joe"

Young Drivers Association 4
Gift Committee 4

Joe

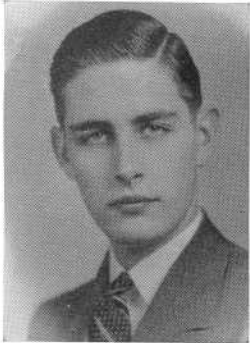




PRISCILLA PRIEST
Commercial Club 4



HELEN PYTEL
Commercial Club 4



WILLIAM HENRY QUINLAN, II
"Bill"

Dramatic Club 4
Home Room Director 3, 4

Bill

EILEEN MARGOT QUINN

Eileen



LEO RACHLIN

MARTIN RACHLIN

"Marty"

Home Room Director 1
Hilltop, Sports Editor 4
Commercial Club 4



ARTHUR RAND

RAYMOND READY

"Ray" "Red" "Reddy"
Commercial Club 4



1938



DOROTHY ARLENE REDFERN

"Dot"

Home Room Director 2, 3, 4
Commercial Club 4



MARY CARMO REGO

"Lucky"

Girls Numeral Club



GEORGE R. REINHAGEN

Varsity Club 4
Football 4

Lukey

JOSEPH C. REIS, JR.

"Buddy"



IRMA JOAN REITZAS

DIOLINDA N. RELVAS

"Dee" "Deedee"

Commercial Club 4



THELMA REMICK

"Thel"

Gym Leader 3, 4
Young Drivers Association 4

Thelma

GEORGE REMY

"Rem"

Electrical Club 4



1938



EULALIA A. REZENDES

"Lolly"

Home Room Director 1, 2
Gift Committee
Hilltop 4



BERYL E. RICHARDSON

"Richy"

Health Club 2
Home Room Director 3
Gift Committee 4
Commercial Club President 4



NORCECIL RICHARDSON

"Norry"

Commercial Club 4
Chorus 3
Dramatic Club 4



ALBERT F. RIOUX



MADALYN ELIZABETH ROACH

"Mal" "Madge"

Commercial Club 4



HENRY ROBERT



WINIFRED J. B. ROBILLARD

Commercial Club 4
Dramatic Club 3, 4
Chorus 4

Edith

EDITH M. ROBINSON

Dramatic Club 3, 4
Forum 2, 3, 4
Young Drivers Association 4



1938



KATHLEEN CAVANAGH ROBINSON

"Kay"

Forum 4
Library Aide 4
Advisory Board

Kay

SOPHIA ROBINSON

Commercial Club 4



PAUL M. ROCKETT

Young Drivers Association 4
Vice-President 4
Office Aide 4

Paul

ROBERT ROCKLIN

"Bob"



JOSEPH LEO ROGERS

"Buck"

MARGARET E. ROONEY

Home Room Director 3
S. A. A. Councillor 4
Commercial Club 4
Literary Club 4
Gym Leader 4



PAUL E. ROPPE

Sincerely Annette

ANNETTE CECILLE ROSS

Orchestra 2
Forum 3
Dramatic Club 3, 4
Young Drivers Association 4



1938



DORIS CLAIRE ROY

"Dot"

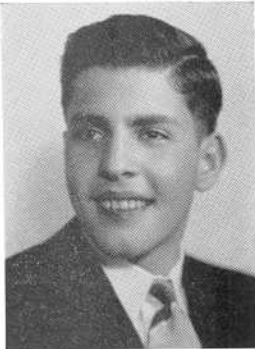
Dramatic Club 3, 4
Commercial Club 4
Thespians 4

Rachel Rubinstein

RACHEL LIBBIAN RUBENSTEIN

"Rae" "Rach"

Forum 2, 3, 4
Dramatic Club 3, Rec. Sec. 4
Literary Club 3, Secretary 4



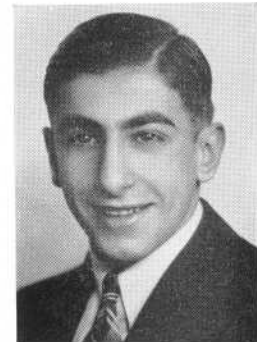
BADEEH SABRA

"Pete"

Commercial Club 4
Traffic Squad

PHILIP SABRA

Football 4
Varsity Club 4
Traffic Squad 2, 3

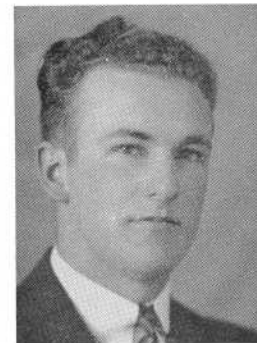


ROSE SANFT

Chorus 2, 3, 4
Home Room Director 2
Forum 3
Commercial Club 4

ROGER SARTINI

"Sock"



JOSEPHINE CLAIRE SBARDELLA

"Jo"

Gym Leader 3, 4
Home Room Director 4
Dramatic Club 4

Janice

JANICE MABEL SCHLEGEL



1938



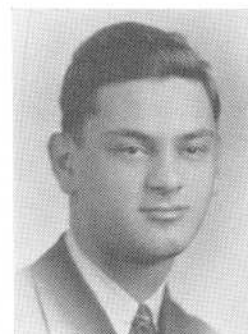
PAUL SCHRAER
Traffic Squad 3, 4



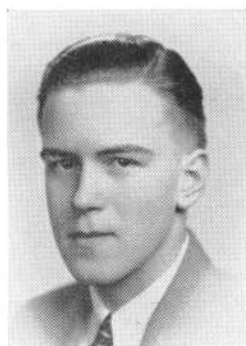
LIONEL SCHUMAKER
Lionel



ARTHUR SCHWARTZ
"Swartzy"



ALEX SELIGMAN
"Ally"
Basketball 2, 3
Football 3



JAMES F. SHANLEY
"Jim"
Traffic Squad 2, 3
Home Room Director 2, 3, 4
Electrical Club 4



GERTRUDE ELIZABETH SHEA
"Gert"
Commercial Club 4
Gym Leader 3, 4

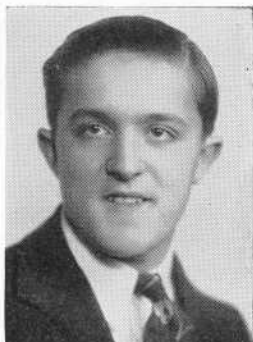


WILLIAM J. SHEA
"Bill"
Commercial Club 4
Varsity Club 3, 4
Baseball 3, 4



GLADYS SHERMAN
"Glad"
Girls Numeral Club 2
Health Club 2
Volleyball and Basketball 2
Commercial Club 4

1938



JOHN MEDEIROS SILVA

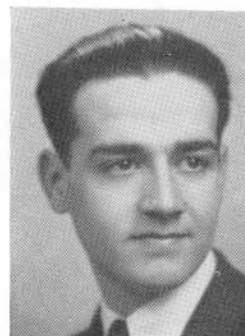
Johnny

LUCILLE ANN SILVA
"Tutt" "Tiney"
Commercial Club 4



LOUIS SILVESTRI

JAMES HENRY SILVIA
"Doc"



MANUEL SILVIA

RUTH NAOMI SILVIA
"Ruthie"
Commercial Club 4



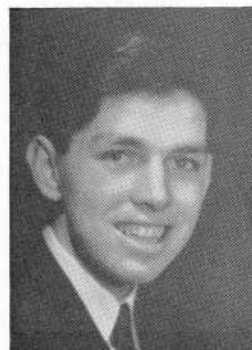
GLADYS JOAN SIMPSON

"Glad"
Commercial Club 4
Home Room Director 2

*photo of Luck
Gladys*

GEORGE SISSON

Literary Club 3, 4
Dance Committee 4
Forum 3
Y. D. A., Pres. 4



1938



NATHALIE SLUDSKY

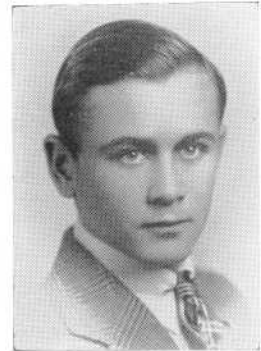
"Nat"

Home Room Director 3
Library Aide 4
Dramatic Club 4
National Honor Society 3, 4
Advisory Board 4

Not

HARRIS L. SMITH

"Tex"



JANICE ELEANOR SMITH

"Smitty" "Skippy"

Home Director 3
Chorus 3
Dramatic Club 4
Commercial Club 4

THEODORE SMITH

"Ted"



RITA SOPER

Commercial Club 4
Gym Leader 3

LUCILLE MURIEL SOREL

Commercial Club 4
Home Room Director 1



DEMIS SOUZA

FRANK SOUZA



1938



GEORGIANA SOUZA
"Georgie"



THOMAS LOUIS SPELLMAN
"Tom"

Health Club 2
Traffic Squad 3



ROBERT SPENCE
"Bob"

Commercial Club 4
Home Room Director 3
National Honor Society



KENNETH SPILLER

Chorus 2, 3
Orchestra 3
Dramatic Club 4



JENNIE SPILLMAN

Home Room Director 3
National Honor Society 3, 4
Library Aide 3, 4



ELSIE MAY STONE

"Snitch"
Commercial Club 4
Home Room Director 3



GILBERT A. STONE
"Stoney"

Home Room Director 3
Health Club 2

G. Stony

LEONARD STONE

"Stony"
Chorus 2
Traffic Squad 3
Electrical Club 3, 4
Young Drivers Asso. 4



1938



ROSEMARY STOODY

"Stooge"

National Honor Society 3, Vice-Pres. 4
Dramatic Club 4
Library Aide 3, 4

Rosemary

RUSSELL PORTER STRICKLAND

"Stricky"



ANNE VIRGINIA SULLIVAN

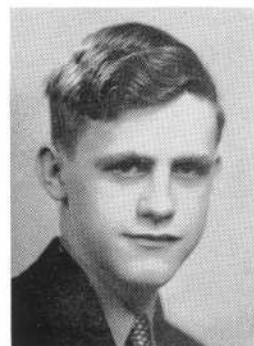
"Babe"

Health Club 2
Gym Leader 3, 4

"Babe"

CHARLES SULLIVAN

"Chuck"



EDWARD SULLIVAN

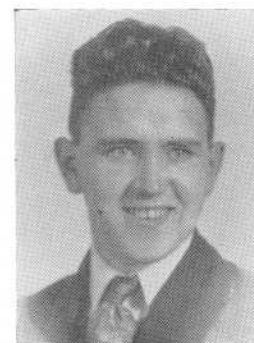
"Sullie"

Gene

EUGENE F. SULLIVAN

"Gene" "Sully"

Young Drivers Association 4
Dance Committee 4



JOHN XAVIER SULLIVAN

"Sully"

Electrical Club

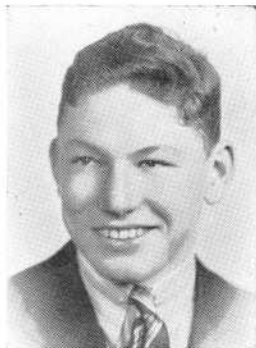
*Best Wishes
Pauline*

PAULINE SULLIVAN

Forum 2, 3, 4
Gym Leader 4



1938



ROBERT E. SULLIVAN

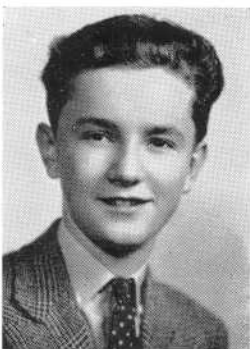
"Bob" "Sully"

Basketball 2, 3, 4
Varsity Club 4
Health Club 2

Ruth

RUTH SULLIVAN

Vice- President 2, 3
Gift Committee 4



BERTRAND H. SURPRENANT

"Bert" "Soupy"

Dramatic Club 3, 4, M. of C. 3
Home Room Director 2
Health Club 2
Thespians 3, Treasurer 4

Bert

DOROTHY FRANCES SUTCLIFFE

"Dot"



GEORGE F. SUTHERLAND

Electrical Club 2, Vice- Pres. 3, Pres. 4
Pin and Ring Committee 3
Library Aide 3, 4
Asst. Bus. Mgr. Record Book
National Honor Society 3, 4

Cecile Sutton
CECILE SUTTON

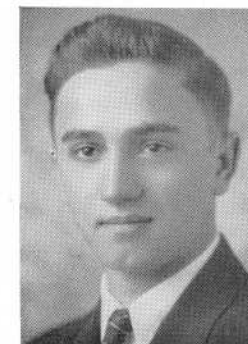


BERNARD F. SWEENEY, JR.

Orchestra 2 3
Band 2, 3, Vice-Pres. 4

THEODORE SWIDZINSKI

Football 2, 3, 4
Track 3, 4
Varsity Club 4





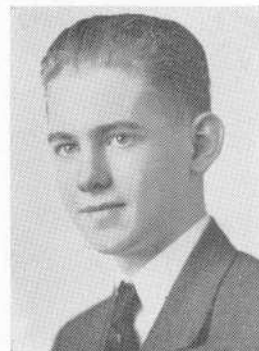
ANNA SZURKO
Home Room Director 2
Commercial Club 4



JOSEPH TAVARES
"Joe" "Buck"
Chorus 3, Vice-Pres. 4
Football 3, 4
Basketball 3, 4
Track 3, 4
Varsity Club 3, 4



JULIA M. TAYLOR



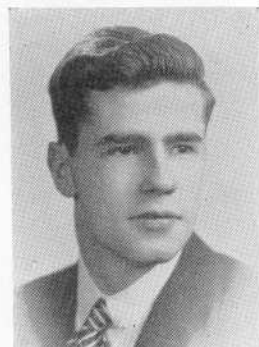
SHELDON W. TAYLOR



EDWARD TERRY

Eddie

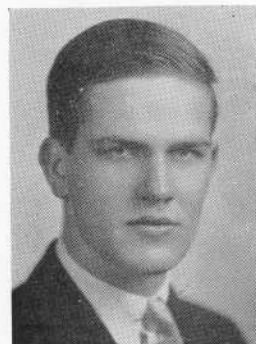
ERNEST ALDEN TERRY, JR.
"Joe"
Home Room Director 2, 3, Pres. 4
Student Council 4
Varsity Club 4
Young Drivers Association 4
Tennis Manager 3, 4



FRANCES ADELAIDE TERRY

Frannie

JAMES E. THORNLEY



1938



LILLIE MAY THORPE

Commercial Club 4



JUNE GRACE TIKOSEN

Health Club 2
Forum 3
Literary Club 4



ANNE MARIE TOBIN

"Toby"

Home Room Director 2
Gift Committee 4

Anne

JOSEPH W. TOKARZ

Literary Club 4

Joe



WINIFRED MARY TOMLINSON

"Winnie" "Win"

Commercial Club 4

DOROTHY TORRES

"Dot"

Commercial Club 4

Dot



AMY E. TOWERS

Health Club 2
Commercial Club 4
Gym Leader 4

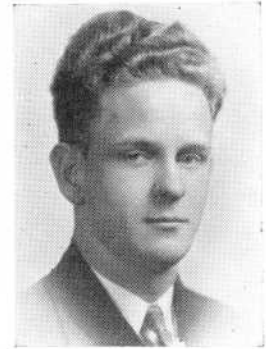
MARY E. TOWERS



1938



RUTH E. TRACY
Commercial Club 4



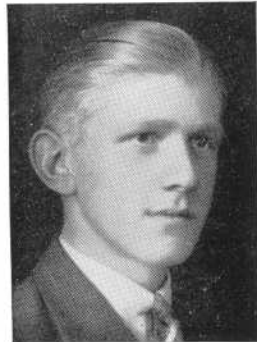
WARREN J. TRENHOLME
"Dan"
Traffic Squad 3, 1st Lieut. 4



ALICE P. TUNNEY
"Pat"
Hilltop Staff, Circulation Mgr. 4
Commercial Club 4



LOIS REYNOLDS TURNER
Health Club 2
Debating Team 4
National Forensic League 4
Dance Committee 4
Young Drivers Association 4
Gym Leader 4



GEORGE WASHINGTON TWITCHELL
Commercial Club 4



Annie
ANNIE HELEN VARANESE

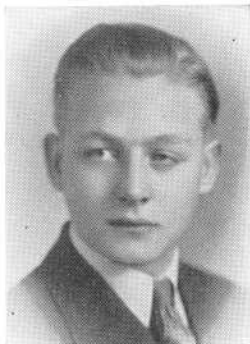


ANGELINA N. VASCONCELLOS
"Angie"
Commercial Club 4



EMMA LOUISE VENTURA
"Emmy"

1938



JOHN J. VICKERS

Health Club 2
Commercial Club 4



EDMUND C. VIEIRA

Orchestra 2, 3
Commercial Club 4



MANUEL VIERA

"Manny"

"Manny"

THEOPHILO VINCENT

"Toby" "Vinny"

Class President 1, 4
Debating Team 3
Forum 3, 4
Dramatic Club 3
National Honor Society 3, 4



GEORGE VIVEIROS

"Vive"

Traffic Squad 1, 2, 3, 4

George



PHYLLIS JOYCE WAGNER

"Phyl"

Gym Leader 4
Young Drivers Association 4



EDNA MAUREEN WALKER

"Ed" "Eddie"

Health Club 2
Class Secretary 2, 3
Girls Numeral Club 3, 4
Commercial Club 4
Cheerleader 3, 4
Capt. Volleyball team 3

Edna

EUNICE WALKER

Library Aide 4
Dance Committee 4





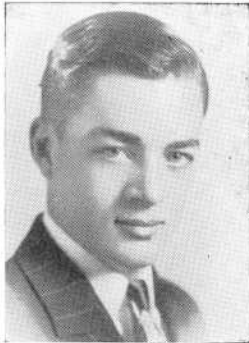
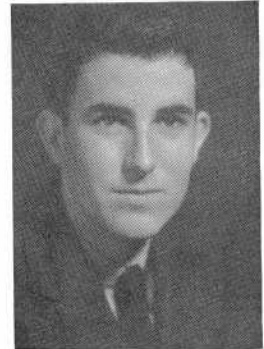
MARY ELIZABETH WALKER
"Beth"

Beth

JOHN DOYLE WALLACE

National Honor Society 3, 4
Advisory Board Chairman 4
Dramatic Club 3, 4
H. R. Director 2, Vice-Pres. 3
Record Book Staff 4
Track 3, 4

John



JOSEPH WALSH

FRANCES WARRENER
"Fran"



VERA ANITA WEBSTER
"Blondie"

RICHARD T. WEYER
"Dick"

Traf. Sq. 2, 2nd Lieut. 3, Capt. 4
National Honor Society 3, 4
Office Aide 3, 4
Record Book Staff 4



MARILYN WHALON

ELSIE WHITFIELD
"Pinky"
Commercial Club 4



1938



ALFRED WHITTAKER
"Al"
Commercial Club 4



DORIS ALINE WILLIAMS
Commercial Club 4



HAZEL L. WILLIAMS
National Honor Society 3, 4



ROBERT H. WILLIS
"Bob"
President 2
Home Room Director 2, 3, 4
Traffic Squad 3, Lieut. 4
Chorus 4
National Honor Society 3, 4
Young Drivers Association 4



DORIS WINSTANLEY
Commercial Club 4



CATHERINE WINTER
"Kay"



STELLA WOJICK
"Tess"
Basketball
Volleyball
Girls Numeral Club



CHESTER WOLSTENHOLME
"Chet"

1938



JOHN R. WOOD
"Zuppe" "Woodie"



GRACE WORDELL



MONA WUCHTER
"Mo"
Orchestra 2, 3, 4



Sybil
SYBIL E. YAMINS

Library Aide 3, Pres. 4
Forum 4
National Honor Society 3, 4
Young Drivers Association 4
Advisory Board 4
Record Book Staff 4



RUSSELL YATES



OLYMPIA M. ZARLENGA

Orchestra 2, 3, 4
Chorus 2, 3, 4
Commercial Club 4
Gym Leader



ANITA BEVERLY ZELDES
"Bev"
Home Room Director 3



WALTER ZIOBRO

LEO BENOIT
RUSSELL R. BERUBE
NORMAN J. BOUCHER
MARTIN F. BUSHELL
LEONARD CAMPBELL
ARTHUR CARON
DORIS E. CONNOLLY
CHARLOTTE L. CORY
EDWARD CRANE
MARGUERITE CRIPPS
EUGENE CZEPIEL
DANIEL DOWNEY
EDWARD F. DUCLOS
GRACE E. ECCLES
DOROTHY M. FAIRHURST
HENRY FORTIER
EDWARD C. GAGNON
MAURICE GOSSELIN
JAMES T. HARGRAVES
STANISLAUS HERTEL
EDNA HILTON
WILLIAM C. HINDLE
JOHN A. HOLAHAN
GEORGE HOWARD
DOVARD C. JACKSON
THOMAS KELLY

THOMAS H. KING
MARY NANCY KUZLA
EDWARD LAVASSEUR
LOWELL LOFTUS
ROBERT S. MARSHALL
RAYMOND MELANCON
RUTH MERCER
ERNEST R. METHOT
ARTHUR A. NELSON
JOSEPH F. PERRY
WALTER PIETERA
ALPHONSE PILACIK
JAMES POWERS
ROBERT L. QUINN
JOSEPH ROGERS
JOHN P. SARMENTO
ROBERT SHARPLES
JOHN E. SHEA
JOHN SLAIDING
ESTRELLA STRAIT
ANNE MARIE SULLIVAN
EARL SUNESON
HENRY SWIST
WALTER WITENGIER
BERTRAM WRIGHT
NORMAN WRIGHT



MARY BISHOP	<i>Most Popular</i>	JOHN P. DEVITT
JUNE LEDOUX	<i>Best Looking</i>	WILLIAM H. HUTCHINGS
MADELINE LEVESQUE	<i>Most Attractive</i>	E. ALDEN TERRY
MAE DUMAIS	<i>Best Known</i>	MANUEL NUNES
VIRGINIA BARDSLEY	<i>Most Original</i>	RICHARD MORSE
KATHLEEN ROBINSON	<i>Class Sport</i>	DONALD POMFRET
EVELYN ENGLISH	<i>Best Dancer</i>	ARTHUR MARGARIDO
MARJORIE GRINNELL	<i>Class Flirt</i>	OVID BAIN
MAE DUMAIS	<i>Most Athletic</i>	CHESTER BEDNARZ
HAZEL HANDFIELD	<i>Most Agreeable</i>	JOSEPH JANUSZ
PHYLLIS WAGNER	<i>Best Dressed</i>	NORMAN LAFORST
A. VIRGINIA SULLIVAN	<i>Most Talkative</i>	PATRICK HARRINGTON
ROSEMARY STOODY	<i>Most Dignified</i>	CASIMIR CIBA
BERTHA ADAMS	<i>Class Wit</i>	JOHN GRONDIN
CLAIRE MORRISS	<i>Most Talented</i>	CHARLES HETHERINGTON
LOIS MANCHESTER	<i>Most Interesting</i>	THEOPHILO VINCENT
ALICE DENTON	<i>Most Studious</i>	EDGAR KNOWLTON
LOIS TURNER	<i>Best All-'Round Student</i>	SUMNER LEVIN
SYBIL YAMINS	<i>Has Done Most for Durfee</i>	MANUEL NUNES
AGNES CARREIRO	<i>Most Likely to Succeed</i>	PAUL DELISLE





Library Aids

The Library Aids, chosen from the Principal's List by Miss Marion E. Kernan, librarian, form one of the most important student groups at Durfee. The pupil's general helpfulness, co-operation, and dependability are considered as well as scholastic standing.

This year the organization is headed by Sybil Yamins, president; Agnes Carreiro, vice president; Cynthia Douglas, secretary; and John Wallace, chairman of the social committee.

The duties of the library aids are very numerous. Each morning, before school, four aids must be on duty to distribute passes and receive books. At the beginning of every period the aids collect and match these passes and bring them to the study halls. They also assist pupils and teachers in finding material and delivering books and data to different rooms.



*Marion E. Kernan
(Librarian)*

Each aid is responsible for a definite section in the library which he must check twice a week according to the Dewey Decimal System. In addition, they must be ready at all times to locate absent pupils, deliver messages to the bookbinders and take Miss Kernan's place in her absence.

Library Science lessons are given to all Sophomores and the aids render their assistance by checking papers and at times conducting the classes under Miss Kernan's supervision.

In addition to the officers, the following members—Allen Belden, Kathleen Dean, Joseph D'Adamo, Lucy Duffy, Camella Fazzina, John Foley, Irene Gagnon, Lorraine Giblin, Ralph Higgins, Barbara Jones, Samuel Kaplan, Edgar Knowlton, Gertrude Ledoux, Marion McPartland, Walter Milne, Lawrence Morin, Manuel Nunes, Warren Prebluda, Kathleen Robinson, Joseph Shelley, Nathalie Sludsky, Jennie Spillman, Rosemary Stody, Nancy Stover, Sally Stover, George Sutherland, and Eunice Walker.

Barbara Wellington



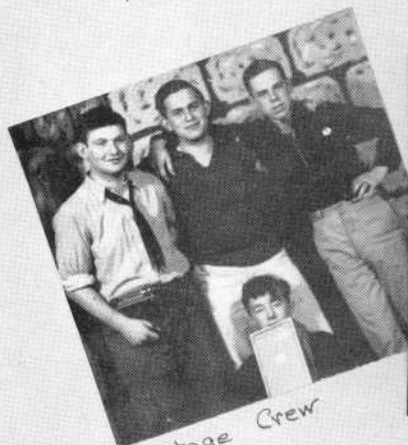
National Thespians



Congratulating the N.F.L. winner



Dramatic and Humorous



Stage Crew



Yeomen of the Guard.



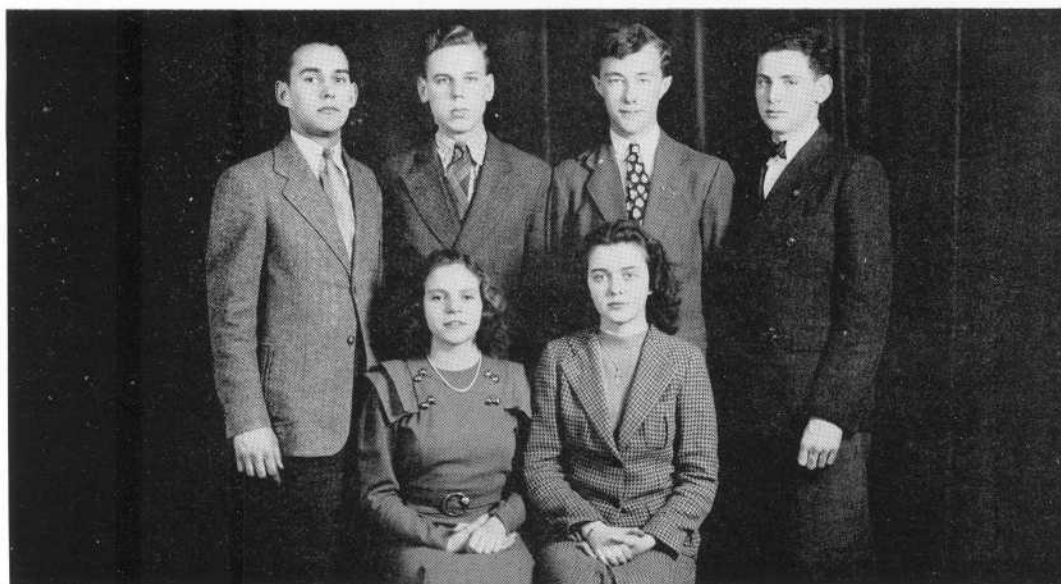
Carpenter?



The Fifteenth Candle



The Bishop Plays Detective



Dramatic Club

President

JOHN LISET

Financial Secretary

JUNE LEDOUX

Vice President

RICHARD MORSE

Recorder

RACHEL RUBENSTEIN

Secretary

HARRY GOLUB

Call Boy

THEODORE FRIEDMAN

The annual journey of the Dramatic Club began in October, 1937. The old members combined with the newly adopted, who were taken on at the first stop, and after settlement the ride was continued under a new constitution.

The second stop was for the production of three short plays, which was the club's first major performance of the new year. These were successful in all ways. Short stop for gas.

Stops, with no time in between, swiftly followed. It was not engine trouble, but rather two radio broadcasts, a theater party and many club productions.

In January a quick stop was made and all left the car to participate in "Novelty Nite." Amid the cries of appreciation we continued our journey, and in passing a few cars we lent a little assistance to the Chorus in their production of the operetta.

A clue led us to Boston to enter into Drama Day Festival. We did not place, but hurried on our way for other clues. Our last long stop was made to present the annual three-act play. "The Bishop Plays Detective" took the audience by storm and applause is still being heard.

The final stop was made to let the Seniors off for graduation and to change the drivers. With new drivers and a car full of fuel we hope that next year will be just as successful as the year of 1937-38 was for the Durfee Dramatic Club at Durfee.



Orchestra

The Durfee Orchestra, in 1938, realized one of the most successful seasons ever enjoyed by orchestral groups at Durfee.

Under the leadership of Miss Helen Ladd, faculty advisor, and Charles V. Hetherington, concert master, the group played at many of the various assemblies during school.

It played at the three one-act plays which were presented by the Dramatic Club. In May it sent several delegates to the New England Festival at New London, Conn., and also presented its annual concert. It played host to a large group of musicians during the Massachusetts State Festival held in Fall River in May.

The climax of the year's work, however, was the presentation of the operetta in February. Combining with the chorus and enlisting the aid of the Dramatic Club, the Orchestra helped greatly toward success of Gilbert and Sullivan's "Yeomen of the Guard."

Closing the year's activities with a party at the Fall River Country Club, the Orchestra drew the curtains on a most successful season.

Chorus

The Durfee Chorus this year numbered ninety members, chosen from all four classes. The Chorus was first heard in December, when its members marched through the corridors of the Durfee and Technical buildings singing traditional Christmas carols.

In February the annual Gilbert and Sullivan operetta was presented, this year our offering being the "Yeomen of the Guard."

Twenty members from the Chorus, Orchestra and Band represented Durfee in March at the New England Festival of Music held in New London, Conn.

The Chorus and Orchestra united, in May, to give the annual spring concert. This year Fall River was the scene of the Massachusetts Music Festival, held in the city on May 7th, and in which the Durfee music groups took an active part.

The Chorus participated in the Founder's Day program in June and its members were later awarded insignias of merit upon completion of the year's work.

A dance was held at the Country Club by Miss Ladd for members of the music clubs, past and present, as the last social activity of the year.

The officers were Claire L. Driscoll, president; Joseph Tavares, vice president; Roland Allard, business manager; Faust Fiore, Jr., librarian, and Helen L. Ladd, director.

Band

Under the capable leadership of Director William Allinson, the Durfee High School Band has become one of the leading organizations of the school.

During the past year the Band has been enlarged until it outnumbered most previous Bands. The past season opened at the Alumni Field, when the Durfee football team played Rogers High, and the Band continued to play at all local and some out-of-town games. The members turned out full force in their colorful uniforms to cheer the players and fans alike.

The Band also played at all Pep Rallies throughout the year. However, activities were not confined strictly to the school, as the Frank Allen Wilcox Post of the American Legion engaged the band for parades on Armistice Day and Memorial Day. Another outside engagement was a concert given at the Elk's Carnival held in the Casino. The final activity was the State Music Festival, held in Fall River, at which the Band made a fine showing.

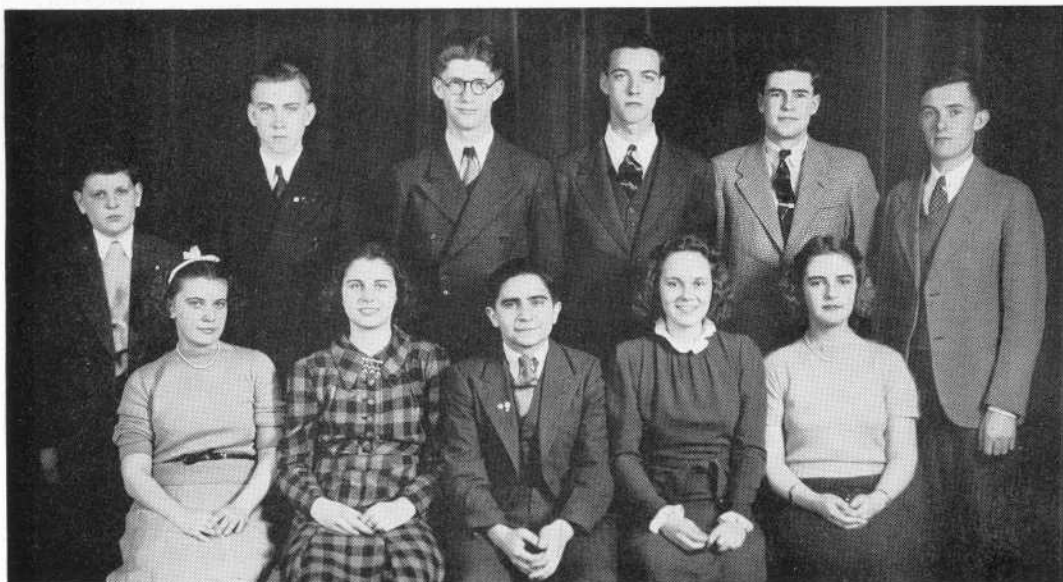
Many musicians received their start in the B. M. C. Durfee High School Band and are now on their way to a musical career.

The officers of the Band for the past year were William Ormerod, president; Bernard Sweeney, vice president; Eleanor Wilkinson, secretary-treasurer; Henry Cottrell, custodian; Arthur Goodwin, student leader; Marilyn Cloutier, drum major, and Mr. Ambrose F. Keeley, drill master.



Hilltop

The Durfee Hilltop, school publication of the B. M. C. Durfee High School, has a purpose behind its news, editorial, social and feature columns. Primarily, it is a newspaper to summarize news events of each week and to give students a detailed knowledge of the important happenings in so large a school as Durfee. Considerable time is spent and much work is done in order that the paper may be in the hands of the pupil early each Friday morning. The Hilltop works in practically the same manner as any large daily newspaper. News and social as well as feature material is handed to the editor on Monday. The copy is read by the editors and the faculty advisor, Mr. John T. Crowley, whose help and assistance is instrumental to the success of this enterprise. Tuesday and Wednesday are devoted to proof-reading, make-up of pages, and compiling of late news. On Thursday, the paper as it will appear on the day of publication is read for typographical errors. Headlines must be written by the assistant editor and other members of the staff.



S. A. A.

This year with a total membership of 2,000 students, the Students' Activities Association through its Council has continued to expand its numerous and varied activities by approving new clubs, regulating old ones, planning assemblies, placing before the Principal all sorts of suggestions from students and teachers, and endeavoring in every way to cooperate with the Principal and Faculty on measures for the welfare and enjoyment of students.

Projects such as the Officers' Banquet, the three Upper Class Socials, the Bronze Honor Plaques, and the publishing of the All-A Honor Roll, the Principal's List and the Guide for New Students were again successfully carried out by the Council.

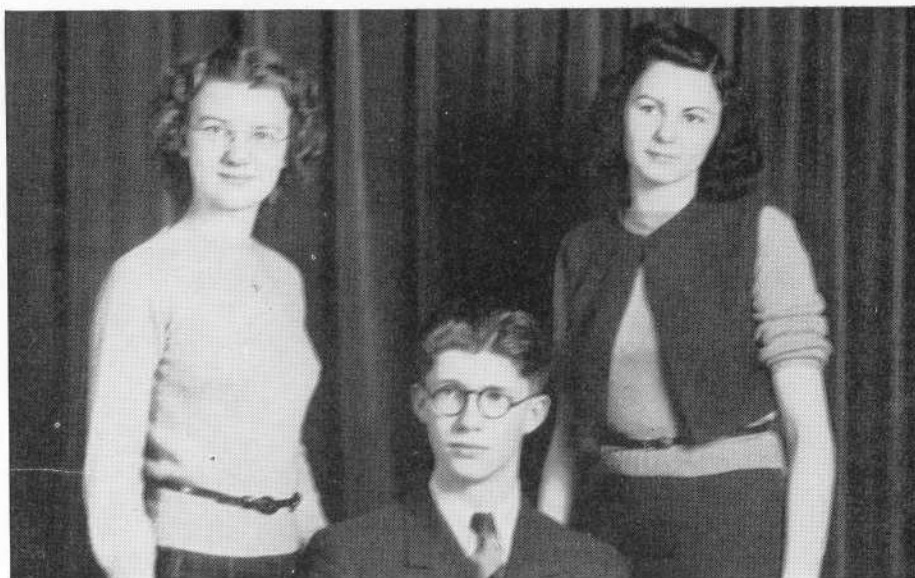
As a tribute to the Football Team, the Council sponsored the "Pigskin Hop" which was an innovation and a prelude to the Thanksgiving Day game between Durfee and New Bedford.

In order that the citizens of Fall River might be acquainted with the extra-curricular activities at Durfee, the Council inaugurated a series of broadcasts over station WSAR.

The Council has continued to represent Durfee at the sectional and state meetings of the Associated Body of Student Councils.

The officers of the Students' Activities Association are Manuel E. Nunes, president; Sally Stover, vice-president; and Merrill Leviss, secretary. Miss Alice G. Langford and Mr. James F. Conlin are the faculty advisors.

In addition to the officers the following are members of the Council: Margaret Rooney, Patrick H. Harrington, Jr., John Foley, Ruth E. Harrison, Ernest A. Terry, Raymond Wilding, Grace Terry, and Kenneth Leigh.



National Honor Society

The Mu Kappa Delta Chapter of the National Honor Society was established in Durfee in 1936 on the recommendation of Principal Carroll and the Students' Activities Association. The object of the chapter is to create an enthusiasm for scholarship, to stimulate a desire to render service, and to encourage the development of character in the students of B. M. C. Durfee High School.

Membership in this Society is based on Scholarship, Service, Leadership, and Character. Candidates to be eligible for election to this chapter, must stand in the first 25% of their classes in scholarship, must have spent at least one year in B. M. C. Durfee High School, and must have 80% in one half of all four and five period subjects and no mark below 70%.

The entire faculty judges the qualifications of candidates on the basis of Service, Leadership, and Character. In the first year of its existence 25 members were elected to the chapter from the junior class and 50 members from the senior class.

Shortly after these members were chosen a most impressive ceremony of induction took place in the Auditorium before the senior class. This was followed soon after by a meeting of the society at which the officers for the year 1937-1938 were elected. In the fall of 1937 the first regular meeting of the new organization was held. It was then decided that the society should be purely honorary in scope and should not participate in school activities.

The officers of the society for the year were Patrick H. Harrington Jr., president; Rosemary Stooddy, vice-president; Lois Manchester, secretary.



Commercial Club

The Commercial Club has just completed another successful year, with a membership of 250 seniors.

During the past year we have had business and social meetings. At our business meetings we heard from several prominent business people, consisting of: Mrs. Bertha Huard, chief operator of the New England Telephone Exchange, Mr. Robert Burnett, district manager of the Electric Light Company, Mr. Joseph E. Baldwin, manager of the Massachusetts Employment Agency, and our faculty advisor, Miss Isabelle E. O'Neil.

As to our charitable undertakings fifty dollars was donated to fill baskets for the families of needy club members at Christmas, and in the Spring the club gave fifty dollars for the bleachers at Alumni Field.

The highlight of our social season was the Valentine Dance held in February. The roller-skating party in May was equally well attended and equally entertaining. First and foremost among our social events was the Get Together Party in 1937. Here the club members became acquainted and struck the note of harmony which was to carry them through a very successful year. The annual picnic concluded the year's activities.



Forum

The Forum, fostering the art of public speech and debate, enjoyed one of the most successful years in its twenty-six year history. Not only did it have one of the largest enrollments but it showed a fine cooperative spirit and determined progress in speech. At various meetings, individuals illustrated the various types of speaking and debating. Constructive criticisms were given by the members and competent Faculty Advisor William F. Kaylor.

In addition to sponsoring the debates held during the year, the club embarked on an entirely new project—radio broadcasting. Varied and interesting programs were given by Forum members from the local broadcasting station. The most ambitious project, however, was the successful conduct of the Massachusetts State Speech Tournament sponsored by the National Forensic League. Practically every Forum member had an active part in assuring the success of the tournament.

The Forum concluded its yearly activities with a banquet in June. President William Entin, capable and energetic, was toastmaster. A review of the year's activity was given.



Debating Team

Compiling the most successful record in New England for the second successive year, the Durfee Debating Team climaxed its '37-'38 season by participating in the National Finals of the National Forensic League at Wooster, Ohio, the early part of May.

The team's record reveals 27 victories in 30 forensic encounters. Among the many teams defeated by Durfee were Brown University Freshmen; La Salle of Providence; Portland, Me.; Kent, Ohio; Seminole, Okla., at present national debate champions, Barnstable, Warren and Durfee's arch-rival New Bedford High School.

The team successfully defended the Southeastern Mass. and New England championships gained by the Hilltoppers last year, and was runner-up in the quest for Massachusetts State honors.

Participants in the sectional and national tourneys were Sumner Levin, Patrick H. Harrington Jr., Robert H. Clarke, all seniors, and Bayless Manning, a sophomore.

Other Durfee debaters are Warren S. Prebluda, William Entin, Manuel E. Nunes, Lois Turner, Edward Kenney, L. Constance Chin and Theophilo Vicent.

William F. Kaylor is coach of the Durfee team.

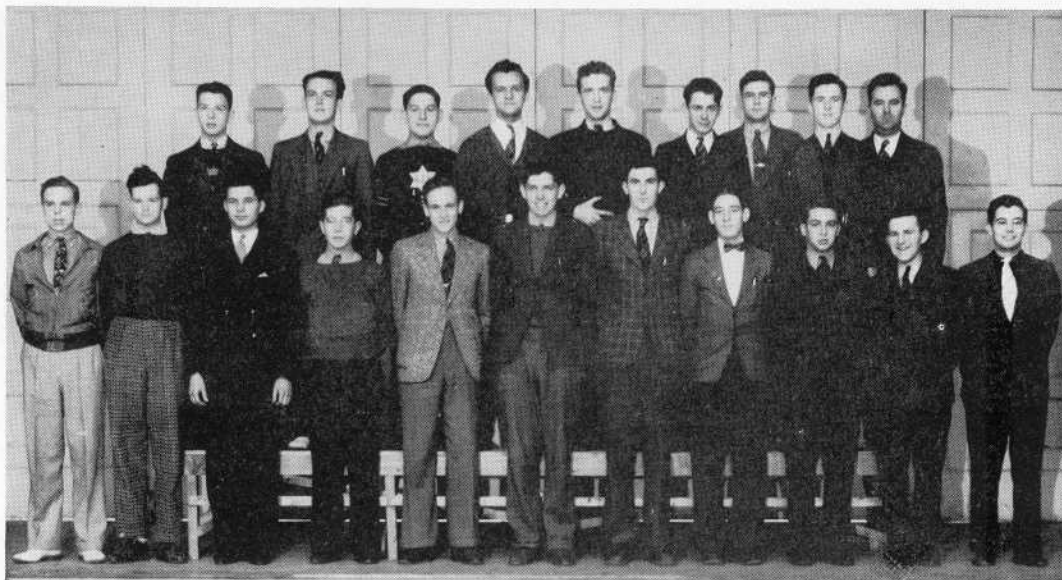


Traffic Squad

The Durfee Traffic Squad was organized almost fifteen years ago for the purpose of preventing congestion in the corridors, speeding up the passing of pupils between classes. Today, in addition to these duties, the squad handles automobile traffic on Rock Street between periods, enforces Sanco cafeteria laws, patrols the campus, aid in handling crowds at Alumni Field, and details ushers for special assemblies.

From a small handful, the squad has grown to a group of more than one hundred members. This year, in recognition of their splendid work, the S. A. A. presented traffic emblems to the officers of the squad.

The officers of the Traffic Squad are, seated, left to right: Alphonse Abdullah, first lieutenant; Edward A. Christophers, co-captain; Jessie Manishefsky, scribe; Richard Weyer, co-captain; Everett Brown, first lieutenant. Standing, left to right: Paul Schraer, first lieutenant; Robert Willis, second lieutenant; Warren Trenholme, first lieutenant; Rufus Hilliard, second lieutenant; Harry Golub, second lieutenant; Stephen Chytilo, second lieutenant and Milton Mason, second lieutenant. Theophilo Vincent, a first lieutenant, was absent when the picture was taken.



Young Drivers' Association

The Young Drivers' Association was organized in January 1938 by George L. Sisson and John D. Wallace. It was under the direction of Mr. John V. Donnelly, faculty advisor. This organization is the only attempt to organize the licensed automobile drivers of the school. The club's motto states the aim of the group, "Safe and Sane Driving." Membership is restricted to those, who in the school, hold licenses to drive automobiles.

The many posters and safety programs sponsored by this organization have done much to render the student body safety-minded.

This organization assisted the local chapter of the National Forensic League when it provided transportation for the contestants in the contest held at Durfee on April 1 and 2.

The organization hopes in the future to acquaint the drivers not only with the safety of driving but the mechanics. It also will, in cooperation with the Red Cross, give instruction in First Aid.

The officers were George L. Sisson, president; Paul Rockett, vice-president; John D. Wallace, secretary; Mr. John V. Donnelly, faculty advisor.



Electrical Club

The Electrical Club of the B. M. C. Durfee High School has had a very successful year under the guidance of President George Sutherland; assisted by the faculty advisors Mr. Myron T. Ashley and Mr. Henry J. Shea.

The Electrical Club is one of the many extra-curricular activities in the school which has a constitution sanctioned by the S. A. A. The purpose of the club is to create a greater interest in electricity, to take up work and conduct experiments that are impossible in class because of the lack of time and to promote greater cooperation between members of the club and men in the electrical field.

The meetings of the club are held every other week and the members of the club usually listen to some speaker or visit some place of interest to students of electricity, such as the Fall River Electric Light Co., the New England Telephone and Telegraph Co. and manufacturers of electrical supplies in nearby cities.

These visits to the various electrical plants and units in and around the city offer the club members a chance to see, in actual operation, the principles which they have studied in the classroom. By becoming acquainted with electricity in this way, the students understand and appreciate the important place of electricity in our world of today.

The officers of the club for the year were George Sutherland, president; James Little, vice-president; James Shanley, secretary.



Literary Club

The Durfee Literary Club was organized about five years ago at the request of students and the suggestion of the Principal.

The purposes of the Club are to offer the student a chance to write and present his work for criticism. In addition to these, the Club is a school where the member is taught to criticize intelligently.

At each of the bi-monthly meetings several manuscripts are read. These are voluntarily submitted for comment by the author and ably criticized by the groups.

The year's officers were Kathleen Dean, president; William Lawton, vice-president; and Rachel Rubenstein, secretary.

Mr. Ambrose F. Keeley is the Faculty Advisor of this group.



Girls' Numeral Club

The Girls' Numeral Club was organized in February, 1936, under the direction of Miss Mary F. McCarthy, faculty advisor, with the purpose of creating more interest in girls' athletics, and in assisting the athletic coach in her endeavor to organize an extra-curricular sport program for the benefit of all girls.

Membership is restricted to any Sophomore, Junior or Senior girl who has earned at least one set of numerals in either basketball, volley-ball or tennis, and also cheer leaders who earn their insignias.

Club officers are a president, chosen from the Senior membership; a vice president, from Juniors; and a secretary, from either of these two classes. An executive or advisory board of three, one from each class, is appointed to assist the officers.

Among the many activities held by the club are bicycle riding, swimming and bowling parties, hikes, and many other sports.

Football

With only six lettermen as the nucleus on which to build, Coach Nawrocki found the problem of turning out a winning team in 1937 a very difficult one. The Hilltoppers were forced to accept an 8-0 defeat at the hands of Rogers High of Newport, and a 13-6 setback from Attleboro, before meeting their first real objective of the season, Fairhaven High, on Columbus Day. Sam Glover and Art Margarido, regular end and back, respectively, were out of the second game.

The team gave great promise in this game, coming from behind in the second half to score a touchdown and point and earn a 7-7 tie with the Tacktowners. New Bedford Vocational, however, checked Durfee, with a single touchdown deciding the outcome, and North Attleboro proved another stumbling block to Durfee's gaining a place in the win column, defeating the Hilltoppers 12-6.

The team's first victory came against Taunton High, by the score of 7-0. Poor judgment in the calling of plays cost the Red and Black a victory over Monsignor Coyle Memorial High, and Coach Nawrocki's boys had to accept another loss, 13-12.

Before a large holiday gathering at Alumni Field on Armistice Day afternoon, the Hilltoppers displayed a powerful attack and downed the team from South High of Worcester by the score of 20-0. The victory raised the hopes of the team's followers considerably for the Thanksgiving Day game with New Bedford, but the advantage in weight and experience gave the Whalers a 14-0 win after a hard, interesting struggle.

To summarize, Durfee won two, tied one, and lost six.

Ten lettermen wrote "finis" to their high school careers in the New Bedford game: Captain Joe Janusz, Joe Tavares, Chet Bednarz, Teddy Swidzinski, Don Pomfret, Art Margarido, Ray Greeley, Steve Bilinsky, George Reinhausen, and Philip Sabra. Manager James Burke is also a member of the graduating class.

At the close of the season the lettermen elected Eugene McCarthy captain of the 1938 team, and Ludger Pelletier was named manager.

Basketball

Under the supervision of Coach Stephen Nawrocki and led by Captain Sam Kaplan, the B. M. C. Durfee High Basketball team of 1938 enjoyed a very successful season winning eight out of twelve scholastic games.

The team twice defeated Holy Family, Vocational, Taunton, and divided the series with Fairhaven and Coyle, each winning one. New Bedford was the only team to defeat the Hilltoppers twice, but only after a hectic battle at the Boys' Club in the final seconds of play did New Bedford emerge victorious by a 20-19 decision. This game resulted in a New Bedford invitation to the M. I. T. tournament in Boston, which otherwise, if the score had been reversed, would have led to a Durfee invitation.

Two lettermen formed the nucleus of this year's team, Captain Sam Kaplan and Chet Bednarz. Other members of the squad were Bob Sullivan, James Creamer, Jack Gazzero, Joe Tavares, Charles P. Carey, Red Harnett, Ted Tokarz, Eugene McCarthy, and Ted DiCorpo. The team was managed by John Brooks.

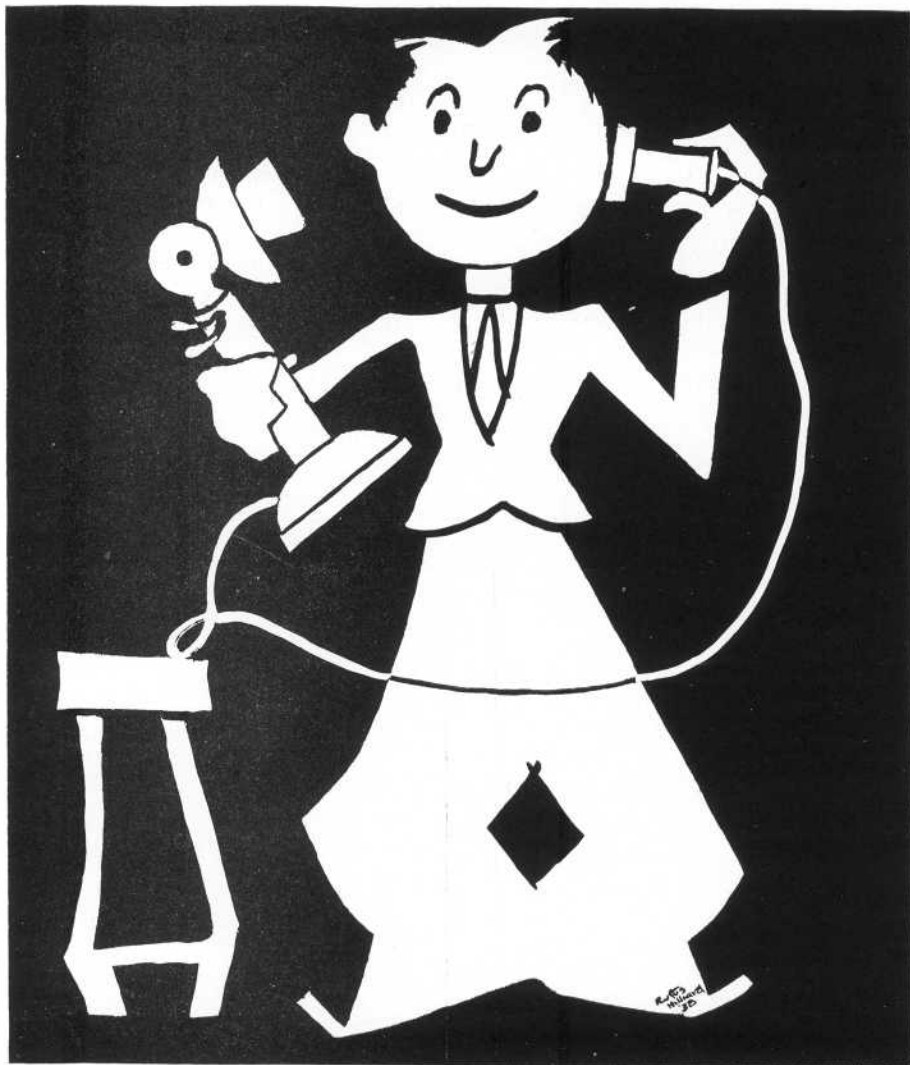
Track

The 1938 Durfee Track Team had a busy season which featured two interscholastic meets with New Bedford High and New Bedford Vocational, and two interclass meets, both of which were won by the Seniors.

The Seniors were the most consistent point winners on the squad. George Jenkinson was an excellent point getter in both the broad jump and the 100-yard dash. Theodore Swidzinski was outstanding in the 220-yard dash, while Theodore Friedman and Robert Sullivan earned many points in the 440-yard sprint. Joe Janusz, Joe Tavares, and Warren Foley were the outstanding weightmen on the squad. John Sarmento excelled in the pole-vault.

Other Seniors on the team were Russ Cochrane, John Brooks, Frank Burgess, John Wallace, Norman McCabe, Arthur Botelho, Everett Brown, and Tufic Coury. Donald Pomfret was track manager of the 1938 team.

During the current season the attention of the student body was turned toward the track team, and many visited Alumni Field when a track meet was in progress.



ENGRAVING

FOR THE 1938 RECORD BOOK

Made by

BICKFORD ENGRAVING CO.

PROVIDENCE, RHODE ISLAND

YOUR CAREER?

Every normal high school graduate has a perfectly natural desire to continue his education for the purpose of improving his earning capacity.

Some choose to follow the orthodox professions of law, medicine, teaching. Many are seriously considering courses in secretarial science and accounting, the cost of which is relatively small, and which lead to pleasant and lucrative employment.

In your plans for your future career will you give this up-to-date local business training school consideration?

The F. G. Allen School
OF SECRETARIAL TRAINING AND
BUSINESS ADMINISTRATION

Granite Block

John P. Nowell, Jr.



MILL STOCKS
INVESTMENT SECURITIES



Archer Building
38 Rock Street

Compliments of

AMICI

Fall River's Leading Sportsman's
Headquarters

FOSTER'S
SPORT SHOP

Est. 1882

Phone 1612

Fourth & Pleasant Sts.

DIAMONDS

WATCHES

SILVERWARE

WONSON
(I N C .)

JEWELERS

154 South Main St., Phone 1627

JEWELRY

CLOCKS

Compliments of

VIVE SOCIETY

Compliments of

FIDAMIES

ESTABLISHED 1842

ADAMS BOOKSTORE

BOOKS AND
STATIONERY

We Specialize in School Supplies

165 NORTH MAIN STREET

GRADE A MILK — CREAM

PLAIN AND CHOCOLATE MILK
SOLD IN TECH CAFETERIA

—From—

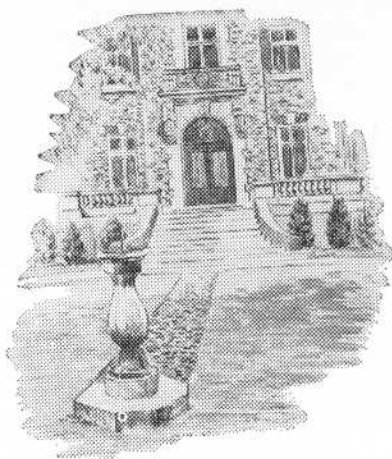
CHAREST & SON
DAIRY

OFFICE: 564 KING PHILIP ST.

Dairy: 529 Birch Street Telephone 500

Compliments of

BERCHMANS-EPSILON



76th Year

Degree courses in Business Administration, Accountancy and Finance, Secretarial Science and Commercial Teacher-Training (four years). Also shorter diploma Secretarial courses.

Free Placement Service. Bryant Graduates are in demand for responsible positions.

Enrollment limited. Early registration is advisable. You are invited to visit the College and inspect the campus and the college-supervised dormitories. Catalog and View Book mailed free. Address, Director of Admissions:

BRYANT COLLEGE

Hope and Benevolent Streets and Young Orchard Avenue
PROVIDENCE, RHODE ISLAND

Middlesex University

Middlesex University, chartered by the Commonwealth of Massachusetts, offers professional courses in medicine, pharmacy, podiatry, and veterinary medicine.

Two-year pre-medical, one-year pre-veterinary and 4-year courses leading to A. B. and B. S. degrees are given in the College of Arts and Sciences.

Faculty of specialists for each school. Laboratories are modern, completely equipped. Spacious 95-acre campus.

Choose one of the following schools for thorough professional training:

School of Medicine—Four-year course leading to M.D. degree.

School of Veterinary Medicine—Confers D.V.M. degree in four years.

School of Podiatry—Professional three-year course in Podiatry (Chiropody).

School of Pharmacy—Prepares for State Board examinations. Comprehensive two-year course.

Graduates of Durfee High School admitted without examination.

Write for catalog.

MIDDLESEX UNIVERSITY
WALTHAM, MASS.

Suffolk University

CO-EDUCATIONAL

College of Liberal Arts

Day and evening classes. Cultural and pre-professional courses. A. B., B. S., and B. S. in Ed. degrees.

College of Journalism

Evening classes taught by editors, journalists and advertising men. B. S. in Journalism degree.

College of Business Administration

Evening classes in Accounting, Banking, Finance and Business Management. B. S. in Business Administration degree.

Suffolk Law School

Day and evening Divisions. Pre-legal courses for high school graduates. LL.B. degree, prepares for law practice.

Graduate School of Law

Evening classes. LL. M. degree. Tuition in all departments \$160 a year.

For catalogues and information:

Call: Capitol 0555

or Write to

SUFFOLK UNIVERSITY
20 Derne Street
Boston, Massachusetts

Compliments of

LEARY PRESS

Fall River

TALBOT & SON, INC.

Next to City Hall

Outfitters to Men and Boys

BRALEY'S CREAMERY, INC.

Distributors of

BIRELEY'S CALIFORNIA ORANGEADE

Fall River

Massachusetts

Compliments of

THOMAS D. MORIN

"YOUR JEWELER"

332 STAFFORD RD.

Phone 6260

Compliments of

EAGLE RESTAURANT

Compliments of

JOHN F. STAFFORD & CO.

INSURANCE

88 PLEASANT STREET

NONPAREIL

CONFECTIONERY & LUNCHEONETTE

135 and 1445 SO. MAIN STREET

"Where Quality and Service Excel"

ALWAYS A SQUARE DEAL AT

MULLEN BROS.

Square Deal Jewelers

DIAMOND MERCHANTS

SILVERSMITHS

254 SO. MAIN ST.

near Spring St.

BROW'S DRUG STORE

For Eczema and All Skin Troubles Use

BROW'S ECZEMA OINTMENT

PRICE 50 CENTS

127 STAFFORD ROAD

Specialists in Outfitting
Athletic Teams

WALTER FRAZE CO.

9 NO. MAIN STREET

SPORTING GOODS

Class Rings

Cameras

Compliments of

THE NOBBY MEN'S SHOP

162 SO. MAIN ST.

Tel. 4779

Compliments of

W. J. GINGRAS

GENERAL INSURANCE

GRANITE BLOCK

A. H. HOOD & CO.

INSURANCE

26 BEDFORD STREET

Autographs

Robert Whart '39'

Florence M. Burns.

Chel McKen '37

Phyllis "Lyons" '39'

Bertrude Hedout '39

Mabel Perry '39

Annette Purgo '40

Lorraine Gilbin '40

Joseph J. Lawlor with love.

Alfred Balducci '38

Helena H. Withrow

Anna G. McCarty

Kathleen M. Dean

Marian McParland

E. Christine Davis

Ambrose F. Kelly

Herbert W. Pickens

Mary E. Judge

Edmund Brown '39'

Alcie G. Langford

Jerry O'Neil '39

Ed "Red" Giffney '39'

Ruth L. Arthur '36

Autographs

J. H. Henshaw '35'

Greg (Rudolf) Barlow

Ruth C. Harrison '39
E. Estelle Miles.

Catharine Butler "39"

Ralph Gilbert "40" Esquire

John W. Cunningham

Autographs

Autographs

Autographs

Autographs

Autographs

Autographs

Autographs

Autographs



PRINTED BY
C. J. LEARY & SONS, INC.
FALL RIVER