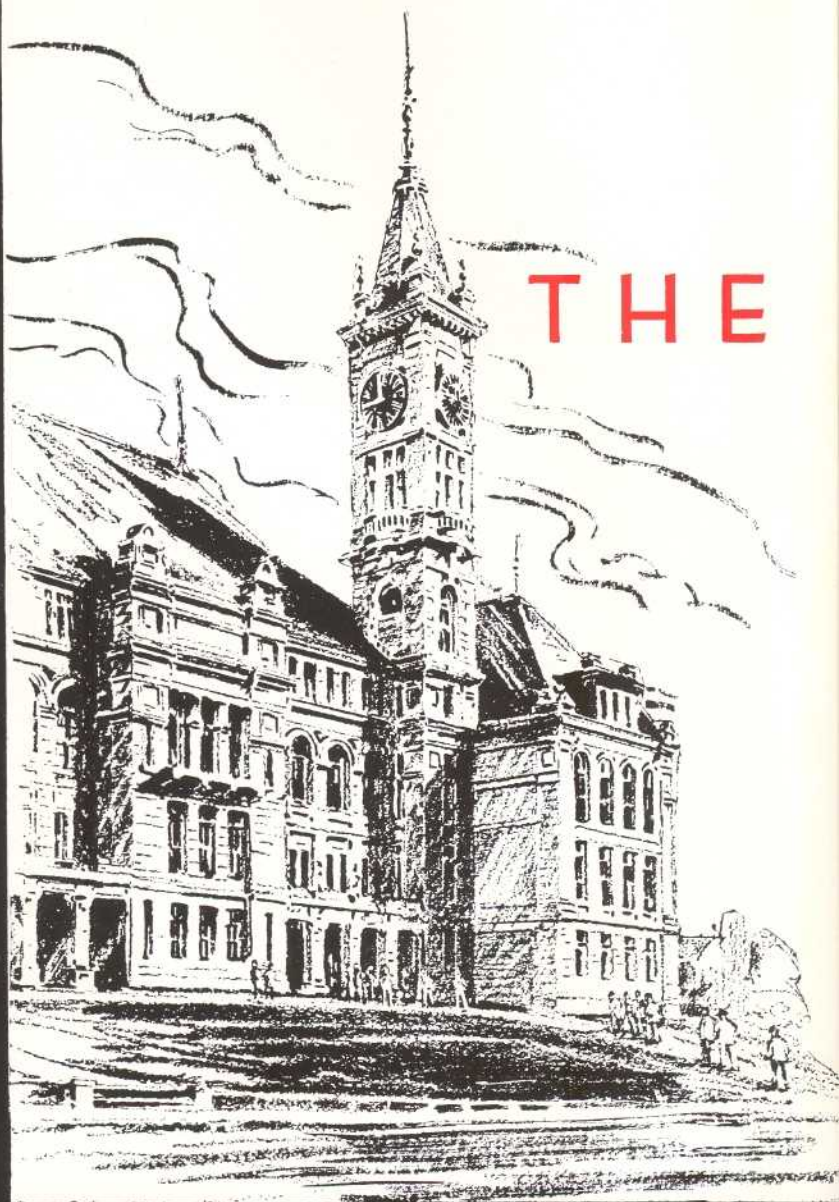


EX LIBRIS



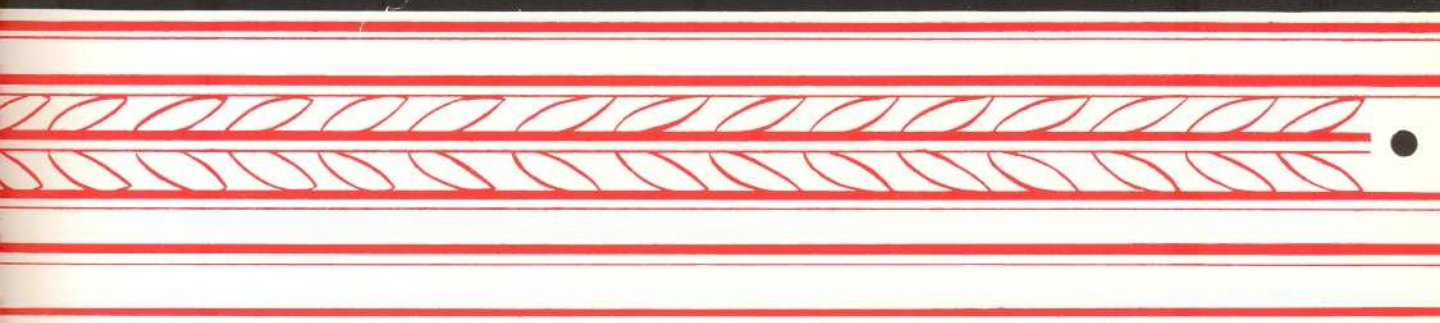
THE




1939 RECORD

OF B·M·C·DURFEE HIGH SCHOOL
FALL RIVER · MASSACHUSETTS

Compiled and Edited by the Senior Class





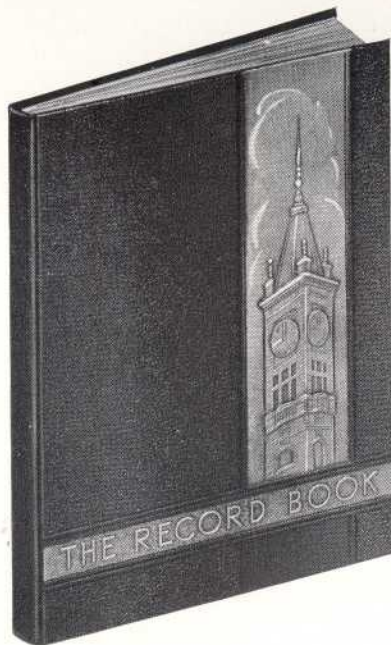
With sincere appreciation of his twenty-five years of service at B. M. C. Durfee High School, we, the Class of Nineteen Hundred Thirty-nine, dedicate this Record Book to Mr. George F. Coyle.

D E D I C



A T I O N

B·M·C
D



THE STAFF

Editor-in-Chief

ALBERT E. WALMSLEY

Assistant Editors

MARION H. JONES

GERALD P. O'NEIL

Business Manager

SHIRLEY E. BOWEN

Assistant Business Managers

GERALD T. DUNN

MARGARET A. McDONALD

Faculty Advisor

MR. GEORGE F. COYLE



ALBERT E. WALMSLEY



SHIRLEY E. BOWEN



MARION H. JONES



GERALD T. DUNN



GERALD P. O'NEIL



MARGARET A. McDONALD





The Record Book



The Record Book of 1939 was compiled by the editors to give Seniors a short, yet complete story of their picturesque life at Durfee.

It was possible to fulfill our intentions by the advice and able assistance of our faculty advisor Mr. George F. Coyle. We have tried to make this book different from those of previous years by departing almost completely from the ideas formerly used. We have done this so that the class of 1939 at Durfee may go out into the world with the idea that, "We lead and others follow".

Further assistance was given to the staff by students who wrote of the clubs and activities. These students were the heads of their respective organizations. They are as follows:

- Students Activities Association—John Foley, President
- Dramatic Club—Joseph D'Adamo, President
- National Honor Society—Sally Stover, President
- Durfee Hilltop—William Lawton, Editor-in-Chief
- Forum—Warren Prebluda, President
- Traffic Squad—Stephen Chytilo, Co-Captain
- Library Aids—Lucy Duffy, President
- Varsity Club—James Creamer, President
- Home Room Directors—Russell Kneen, President
- Commercial Club—Frances Whalon, President
- Camera Club—Carlyle Hurwitz, President
- Literary Club—Robert Sokoll, President
- Young Drivers Association—Merton Berman, President
- Chorus—David Nadien, President
- Band—Edward Pieniardz, President
- Office Aids—Ludger Pellitier, President
- Cheerleaders—Lillian Glowacki, Head Cheerleader
- Football—Eugene McCarthy, Captain
- Basketball—Ted Tokarz, Co-Captain
- Baseball—Thomas Ryan, Captain
- Track—George Dawson, Captain

FOREWORD

*W*e the Class of 1939, looking back on the events of our High School career, find it desirable to have an efficient method of recalling these memories. It has been the aim and purpose of the editors to produce in permanent form a monument and reminder of our life at Durfee. We hope that this enterprise will be popular with and appreciated by the Class of 1939.



FACULTY

CHARLES V. CARROLL, PRINCIPAL

RALPH M. SMALL, VICE-PRINCIPAL

HERBERT W. PICKUP, VICE-PRINCIPAL

Louis A. Allard
Ralph C. Allen
Myron T. Ashley
Eugenie W. Bent
Ernest L. Brightman
Emily B. Campbell
Joseph O. Carroll
Mildred V. Carroll
John A. Carvalho
Winifred F. Chace
William M. Cleare
Dexter E. Coggeshall
Lillian F. Cole
James F. Conlin
Mary B. Connors
Berton E. Cook
Mary F. Corcoran
George F. Coyle
John T. Crowley
Frederick A. Dagata
Margaret G. Dailey
E. Christine Davis
Edna U. Delahanty
Mary A. Dolan
John V. Donnelly
Ruth N. Dow
Edward B. Downs
Andrew L. Duffy
Charles C. Earle
Ralph J. Fletcher
Gladys G. Forster
Carrie T. Foulkes
Frederic J. Gottwald
Mary C. T. Grandfield
Mabel Harlow
Frederick J. Harrington
John J. Harrington
Joseph R. Hathaway
Ruth A. Heywood
George C. Hoar
Katherine L. Hogan
Blanche I. Jouett
Mary E. Judge
William F. Kaylor
Margaret F. Keefe
Ambrose F. Keeley
Marion E. Kernan
Frank D. Lane
Alice G. Langford
Louise C. Laporte
Joseph J. Lawlor
Mary Lee
Elizabeth L. Leonard
Katherine Lomax

John G. E. Lord
Margaret F. Lowney
Harry P. Lynch
Margaret E. Macdonald
Helen Maleady
Raymond P. Maronpot
Grace L. Martin
Charles E. Matte
Mary F. McCarthy
Anna G. McCarty
Rose E. McHale
Victor E. Mello
E. Estelle Miles
George A. Mitchie
Mary K. Mooney
Stephen Nawrocki
Ruth W. Newkirk
Caesar Nobrega
Margaret M. O'Connor
Anne L. O'Neil
Isabelle E. O'Neil
Leslie W. Orcutt
Margaret H. Powers
F. Antoinette Pratt
Florence G. Pritchard
Maybelle E. Ramsey
Mary E. Ryan
Malcolm G. Salmond
Sylvia W. Seagrave
Henry J. Shea
Charles D. Smith
Hilda I. Smolensky
Marie V. Shalloo
Anna L. Sullivan
Catherine R. Sullivan
Daniel J. Sullivan
Dorothy C. Sullivan
Helena V. Sullivan
Mary H. Sullivan
Marian R. Thompson
Marion L. Torphy
Ella L. Townsend
John M. Townsend
Ruby M. Vosburgh
Anna F. Walsh
Barbara Wellington
Margaret J. Whalon
Amasa F. Williston
Helena H. Withrow
Lillian Wightman, Matron
Florence M. Burns, Clerk
Lauretta L. Butler, Clerk
Anna T. Coughlin, Clerk
Kathryn A. Lenehan, Clerk

Principal's Message

To the Class of 1939

Graduation or Commencement is a time for serious thoughts about the future. You are definitely planning the next steps of your lives and wondering if they will eventually lead you into your desired business or professional fields. Your present intentions, ambitions, and objectives are most worthy, but will prevailing temptations, incompetencies, and frailties prevent the attainment of your desired goals?

Everyone earnestly seeks success—the ability to secure all the necessities of life and many of the luxuries; but greater than these respect of fellow men, influence, friends, honor and power. Very few are outstanding successes. Most of the class will travel along the middle road with varying degree of satisfaction. Some will be definitely dissatisfied with their lots in life.

Unfortunately it is impossible to lay down a definite set of regulations for placement in the first—the successful group. Adherence to the following suggestions will be helpful.

Analyze and appraise yourselves and strive to eliminate weaknesses and develop strengths.

Progressively acquire adequate knowledge and skill in your chosen field and as much general information as possible.

Have high social and moral aims and ideals.

Be courageous and persistent in securing and retaining employment. Face your problems squarely.

Strive to develop your personality by the continued improvement of your personal traits.

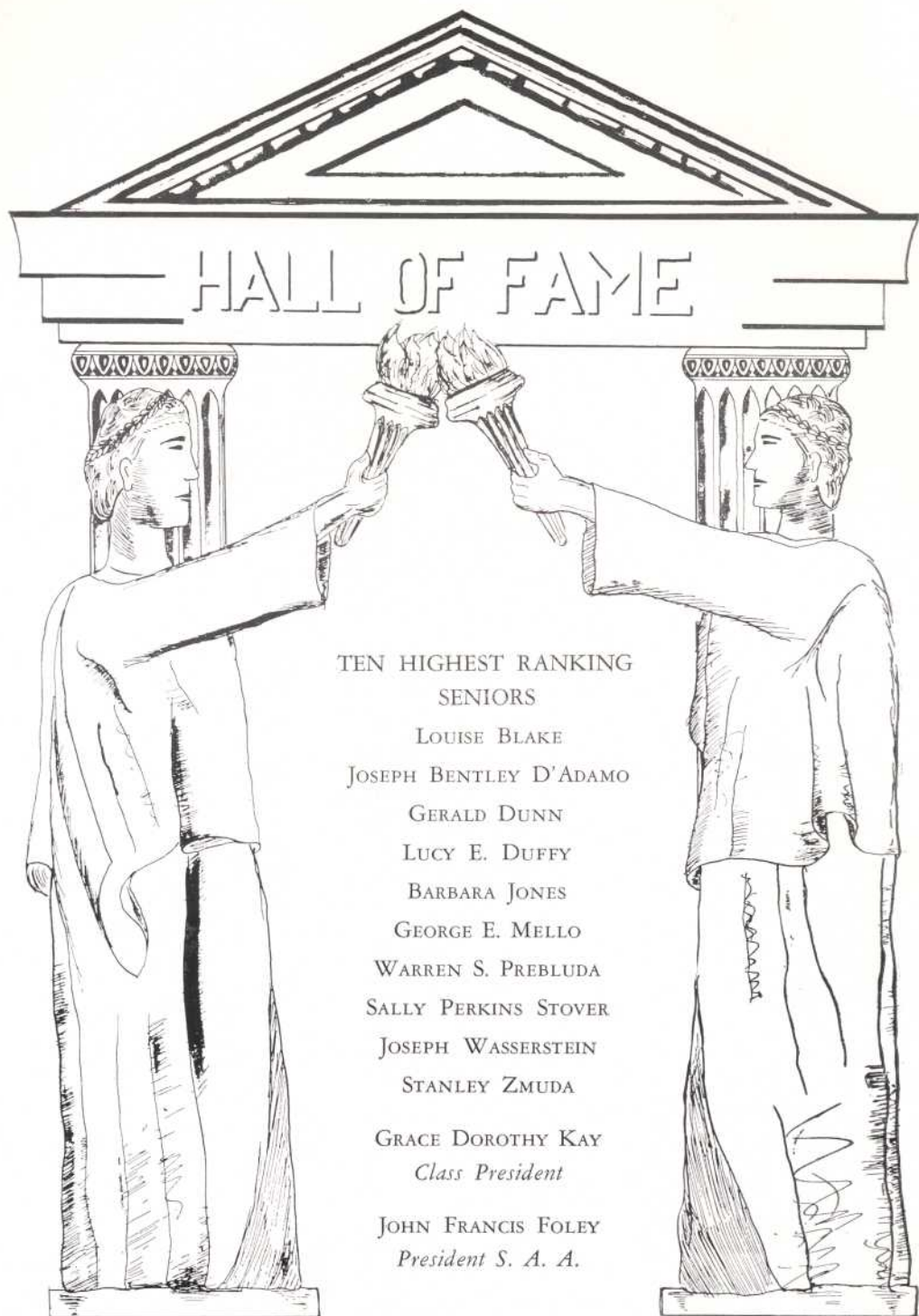
Above all and always be men of upright and honest character.

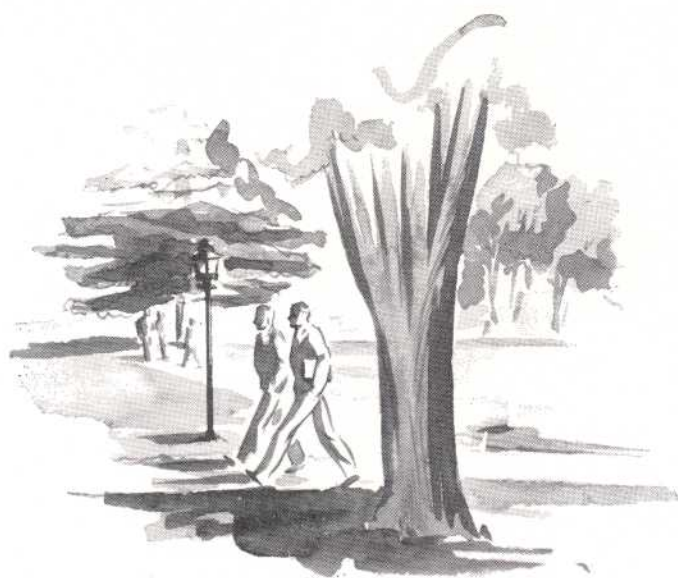
Follow the above suggestions and I am sure that your lives will be fuller, happier, and more satisfactory.

Charles J. Cassall

Principal.







SENIORS

ACTIVITIES

ATHLETICS

ADVERTISEMENTS

C O N T E N T S

B·M·C
D

Class Officers

B·M·C

D



GRACE D. KAY, *President*



MILTON RHODES
Vice-President



RITA C. ST. AMOUR
Class Secretary



SENIORS

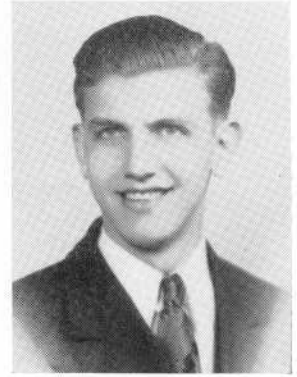




RUTH ELIZABETH ABBOTT

"Ruthie"

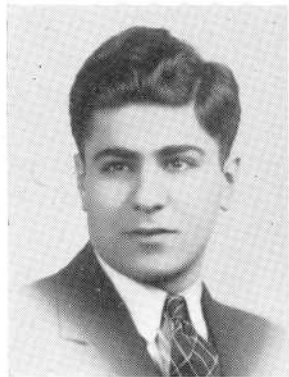
Commercial Club



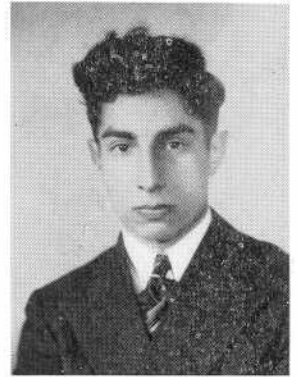
THOMAS AZAR ABDOW

"Tom"

Commercial Club



JOSEPH ACKLEY



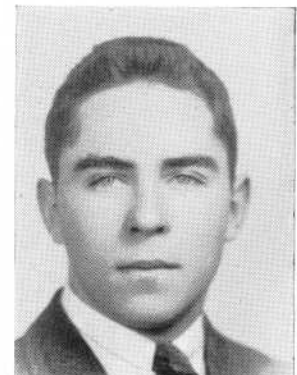
ANTONE AGUIAR

"Tony"



IRENE P. AGUIAR

Commercial Club
Home Room Director 3



DENNIS FRANCIS AINSWORTH

"Alec"

Electrical Club 3, 4
Young Drivers' Association 4



THOMAS RICHARD ALBANESE

"Tom"

Home Room Director 3
Chorus 2, 3, 4



ROLAND ALLARD

"Butch"

Chorus 2, 3, 4
Vice-president 4



J. WILLIAM ALLARDICE

"Bill"

Chorus 4



RALPH C. ALLEN, JR.

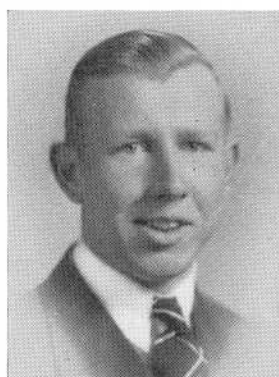
Varsity Club 3, 4
Football 3, 4



DOROTHY SEABURY ALMY

"Dot" "Dotty"

Gym Leader 3, 4



CLIFFORD CHARLES ANDREW

"Flash"



MARION M. ANDREW

Commercial Club



M. MARJORIE ARAGAO

"Margie"

Commercial Club



JAMES FRANCIS ARKISON

"Arky"



MIRIAM ESTELLA ASHLEY

Commercial Club



FRED L. ASHOOK
"Buddy"



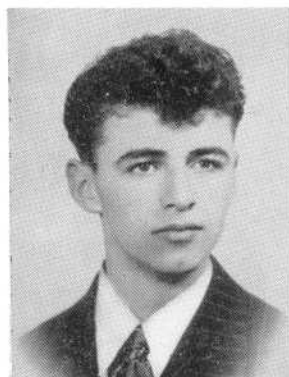
CLIFFORD H. ASHTON
"Kippo"



MARION ELIZABETH ASHTON
Commercial Club



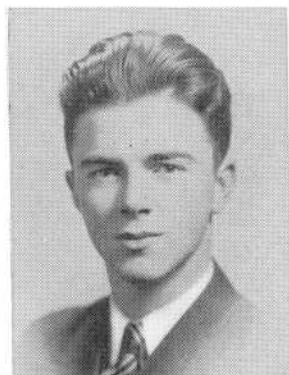
MARJORIE ASPDEN
"Margie"
Commercial Club



CHARLES ASSAD
"Nanny"
Home Room Director 1



ALICE AZEVEDO
Home Room Director 3



EDWARD F. BAILEY
"Ace"
Camera Club 4



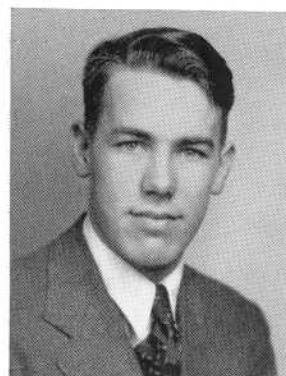
HELEN E. BANAS
Commercial Club
Sanco Guide



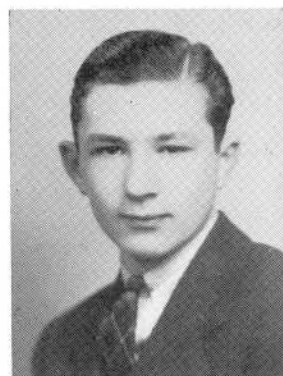
ALFRED BARBOZA
"Al"



ELEANOR M. BARLOW
Commercial Club
Sanco Guide



JAMES BARNES



HOWARD J. BARROWCLOUGH
Office Aid 3, 4
Traffic Squad 2, 3
Young Drivers Association 4



MARGARET M. BASHALL
"Peggy" "Peg"
Commercial Club
Home Room Director 4



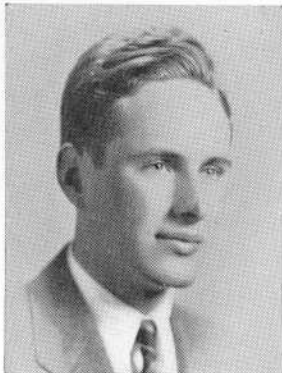
JENNIE MARGARET BEDNARZ



MARY ANTOINETTE BEDNARZ
Commercial Club
Sanco Guide



CHARLOTTE RUTH BEDRICK
Forum 2, 3, 4
Health Club 2
Literary Club 2, 3



ALLAN F. BELDEN



MELVIN BELFORD



MARIETTA LIOLA BELISLE

Commercial Club



JACK BELL

"Jake"



NANCY RAE BELLEFEUILLE

Commercial Club
Home Room Director 2, 3
National Honor Society 3, 4
Vice-President 3



FRANCIS G. BENNETT

Hilltop Staff 4
Home Room Director 1, 4



ANNE MARIE BERKLEY

Commercial Club
Health Club 2



MERTON BERMAN

"Me-t"

Camera Club 4
Dramatic Club 3, 4
Forum 3
Young Drivers Association 3
President 4



EMO BERTONCINI

"Bert"



JULIA ANN BIK

"Judy"

Commercial Club



RITA MAUREEN BILTCLIFFE

"Ree"

Commercial Club



JOHN H. BIRKETT, JR.

"Jack"

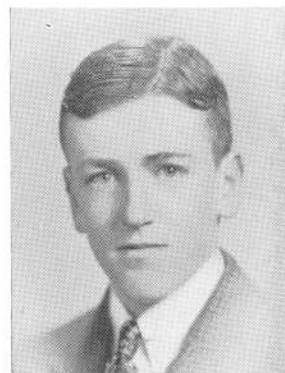
Orchestra 2, 3
Band 2, 3
Chorus 3



LILLIAN M. BIRTWISTLE

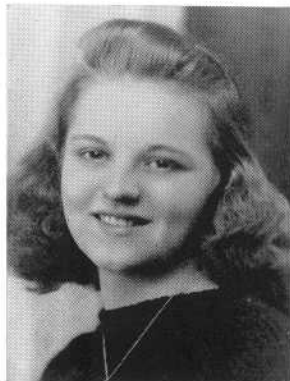
"Lil"

Commercial Club



VICTOR J. BISAILLON

"Vic" "Vickie"



SOPHIE BISZKO

"Zonnie"

Commercial Club

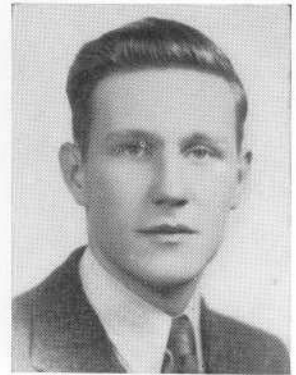


DORIS ANN BLACKBURN

"Dot"



LOUISE BLAKE
National Honor Society



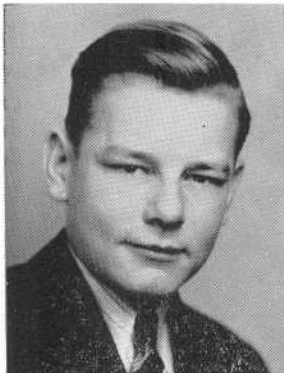
WARREN BAXTER BLAKELEY
"Blake"



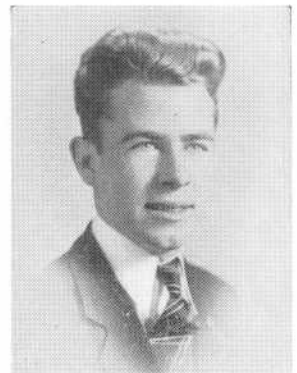
ALIDA BOISSEAU
"Sis"



LORRAINE V. BOISVERT
Commercial Club
Orchestra 2, 3
Concert Master 4
Pin and Ring Committee 4
Young Drivers Association 4



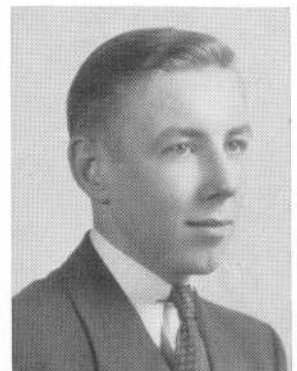
JOHN A. BOLGER, JR.
"Johnny"
Home Room Director 2



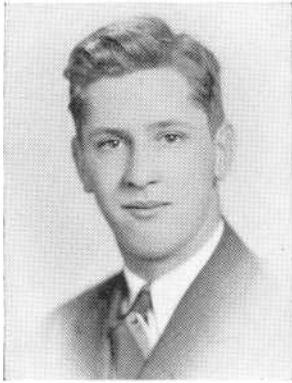
JOSEPH RAYMOND BOLGER
"Joe"
Commercial Club Vice-president



SHIRLEY HENNESSY BOOTH



ELMER M. BOOTHROYD
"Boots"
Home Room Director 4



ANDREW T. BORDEN
"Andy"



M. BARBARA BORDEN
"Barb"



HILDA BOTELHO
Commercial Club



LORETTA BORKOWSKI
Commercial Club



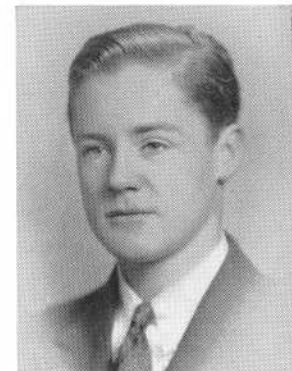
JOSEPH BORGES



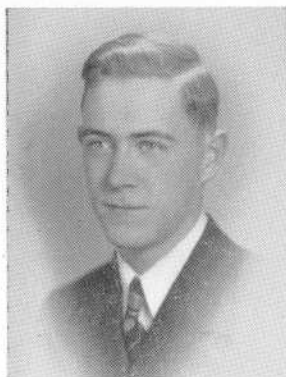
LORRAINE A. BOUCHER
Commercial Club
Home Room Director 1, 4
National Honor Society 3, 4



SHIRLEY ELIZABETH BOWEN
Band 2
Business Manager of Record Book
Commercial Club
Gift Committee-Chairman 4
Girls Numeral Club 2, 3
Health Club Councillor 2
Home Room Director 2, 3
Orchestra 2, 3, 4
Secretary of Junior Class
Volleyball 2



RAYMOND W. BOYNTON
"Pete" "Ray"
Commercial Club



VERNON BRADBURY

"Brad"

MARION E. BRADSHAW

Commercial Club



BYRON ALBERT BRAYTON

"By"

Home Room Director 1, 2
Traffic Squad 2

JOHN BRILLIANT

"Lefty"

Baseball 2
Commercial Club



EDGAR BROUGHTON

"Ed"

Office Aid 4
Young Drivers Association 4

DORILDA M. BROWN

Commercial Club



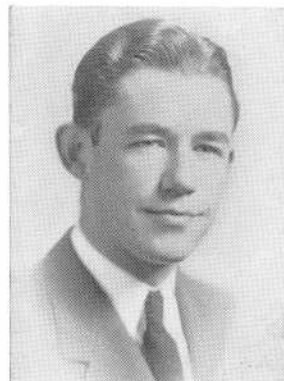
RITA ANN BROWN

"Reet"

WILLIAM P. BROWN

"Bill"

Electrical Club 2
Home Room Director 2
Vice-President and Secretary
Sanco Guide 4





MARGARET ANN BUCKLEY

"Buck" "Peg"

Commercial Club



MURIEL BURGESS

Commercial Club



EDWARD SMITH BURKE

"Eddie"

Home Room Director 4

Literary Club 3

Secretary 4

National Honor Society 3, 4

CATHARINE ANNE BUTLER

"Kathy"

Photographic Committee
Sanco 2

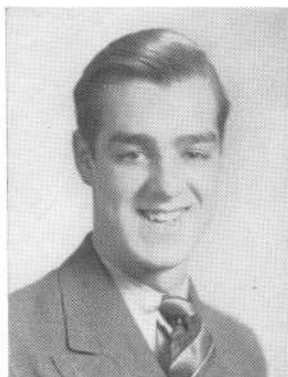


EVELYN C. CABECEIRAS



LEO CAMARA

Commercial Club



ANTONE CAMBRA

"Cal"



EDWARD A. CAMPOS

"Eddie"

Traffic Squad 2, 3
Second Lieutenant 4



WILLIAM CAMPOS
"Hobo"



CLARA CAMUSO
Commercial Club
Gym Leader 3, 4



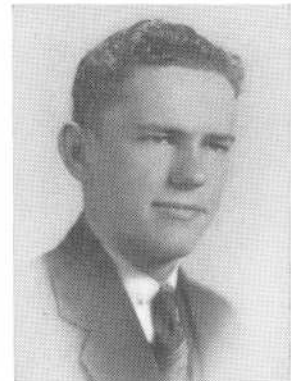
RUSSELL MARSH CANNING
"Russ"
Chorus 1, 2, 3, 4
Young Drivers Association 3



LOUISE CAPETO
"Weazy"
Commercial Club



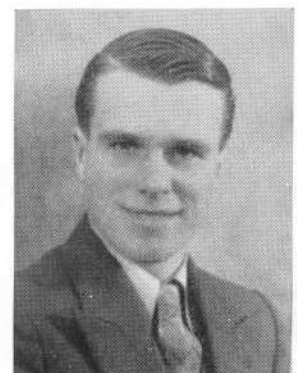
ROBERT C. CARD
"Bob"
Camera Club 4
Commercial Club



HERMAN CARDIN



DORIS CARNIVEL
"Dorsie"
Commercial Club



LEO CARON
Commercial Club



HELEN CARROLL

"Jicky"

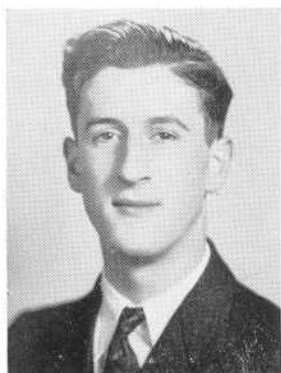
Commercial Club



LAWRENCE E. CAVANAUGH

"Loi"

Commercial Club
Traffic 3



ARMANDO CELLEMME



JOSEPH J. CETOLA



HOLLISTER CLARKE CHACE

"Holly"



HELEN MARY CHOLEWA

Gym Leader 3
Traffic 2



STEPHEN B. CHYTILO

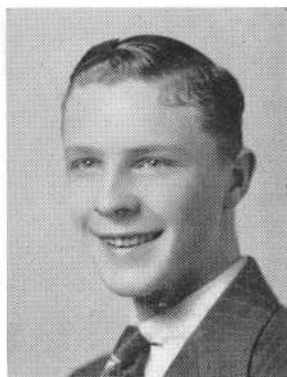
"Steve"

Forum 3, 4
Traffic 2
Lieutenant 3
Co-Captain 4
Varsity Debating Squad 4



THERESA CORRINE CIPOLLINI

Commercial Club



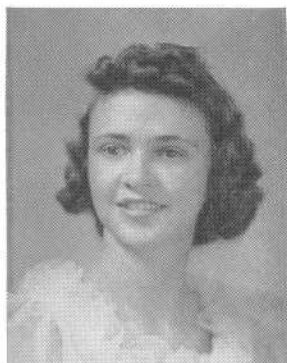
EUGENE T. CLEMENT

"Pinky"

LOUISE MARY CLIFFORD

"Lou"

Commercial Club
Girls Numeral Club 2
Health Club Vice President 2
National Honor Society 3, 4
Sanco Guide 4
Volleyball 2



MARILYN E. CLOUTIER

Band Drum Major 2, 3, 4
Band Master 4
Chorus 2, 3, 4
Dance Committee 4
Girls Numeral Club 2, 3, 4
Gym Leader 3, 4
Home Room Director 2
Orchestra 2, 3, 4

PHYLLIS EDNA COCKROFT

"Phil"

Commercial Club
Home Room Director 3, 4
Photographic Committee 4
Sanco Guide



RUTH SUTELLE COHEN

"Sue"

Commercial Club
Gym Leader 3

ARTHUR COLLIER, JR.

"Art"

Dance Committee 4



EILEEN M. COLLIER

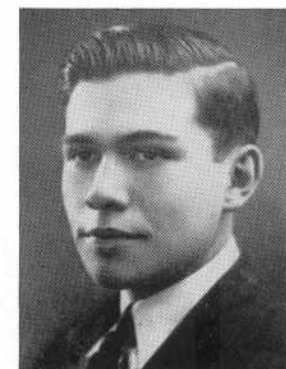
"Collie"

Commercial Club
National Honor Society

GERARD A. COMEAU

"Jerry"

Commercial Club





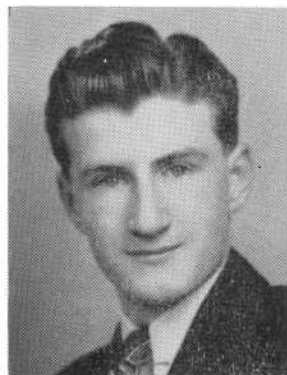
EILEEN MAY CONNELLY

Commercial Club



FRANK ANTHONY CONNOLLY, JR.

Commercial Club



JAMES BERNARD CONNOLLY

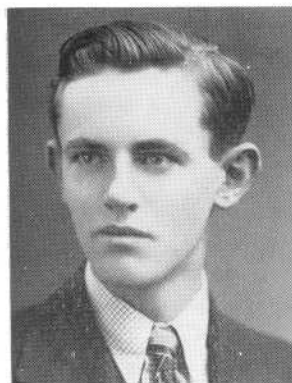
"Jim" "J. B."

Chorus 3
Commercial Club
Sanco Club
Traffic 2



HELEN M. CONNORS

Commercial Club



WILLIAM EDWARD CONNORS

"Bill"

MURIEL PATRICIA CONROY

"Pat"

Commercial Club
Forum 4
Gym Leader 3
Literary Club 4



EARL ROBERT COOK

"Cookie"

Commercial Club
Home Room Director 2
Office Aid
Orchestra 2

RUTH ELEANOR COOK

Commercial Club
Girls Numeral Club 2, 3
Gym Leader 3
Home Room Director 2
Pin and Ring Committee 4
Volley Ball 2





VIRGINIA F. COOPER

"Gimmy"

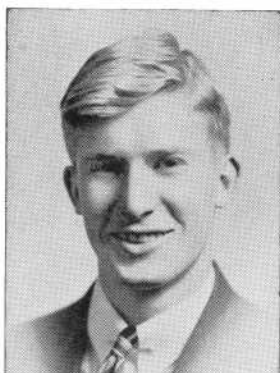
Commercial Club



MIRIAM B. COPELAND

"Mimi"

Commercial Club
Home Room Director 4



HENRY COPLEY, JR.

"Deadwood"

Band 2
Orchestra 2
Track 3, 4



SARAH CORDEIRO



RITA MARION CORGINO

Camera Club 4



CATHERINE DORIS COSGROVE

"Kay"



ALFRED COSTA

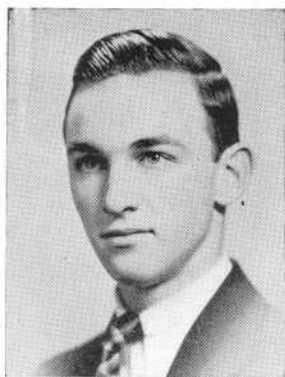
Commercial Club



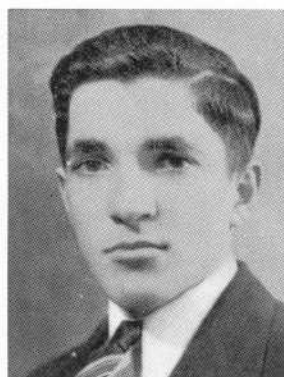
ALICE M. COSTA

"Al"

Commercial Club



JOSEPH COSTA



LIBERAL COSTA



ROGER COTE

Commercial Club



RUTH S. COX

Commercial Club
Dramatic Club 4
Young Drivers Association Sec. 4



JAMES EDWARD CREAMER

"Jimmy"

Basketball 3
Varsity Club 3
President 4



FRANCIS D. CROKE

Electrical Club 2, 3
Home Room Director 2, 3



JOSEPH S. CRUDELE

"Joe"

Home Room Director 4
National Honor Society 3, 4



FLORENCE CUNNINGHAM

"Flo" "Flossie"

Commercial Club
Dramatic Club 3
Gym Leader 3, 4



THOMAS CURTAIN

Commercial Club



MARY ELIZABETH CUSICK

"Mer"

Commercial Club



MARGUIRITE R. CYR

National Honor Society 3



RITA MAY CYR

"Reet"

Commercial Club
Health Councillor 2
Home Room Director 2



MARY DOROTHY CZAPIGA

"Mae" "Dutchess"

Commercial Club



WALTER CZERWONKA

Commercial Club
Young Drivers Association



JOSEPH BENTLY D'ADAMO

"Joe"

Young Drivers Association
Advisory Board 4
Dramatic Club 3
President 4
Health Club 2
Library Aid 3, 4
National Honor Society 3, 4
Pin and Ring Committee 3
Sanco 2
Thespians 4



ANGELA FRANCES DALEY

"Ange"

Commercial Club



RITA DALEY
Commercial Club



ANNETTE JEAN DALLAIRE
Commercial Club



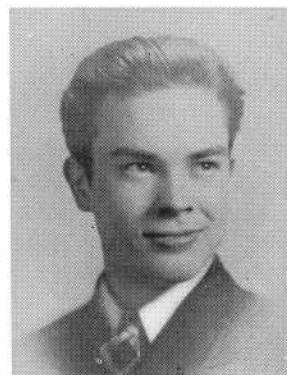
EDWARD DARCY



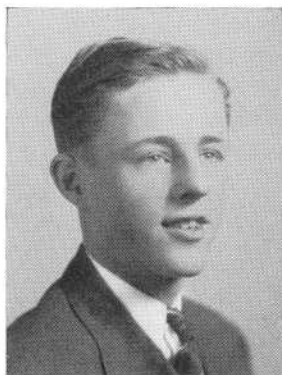
HELEN FRANCES DARCY
Commercial Club



CAROLYN DASHOFF
Commercial Club
Dramatic Club 3, 4
Home Room Director 1, 2
Thespian Club 4



ALLAN DAVIS
Commercial Club



SHELDON DAVIS
"Shell"
Track 3, 4



GEORGE ALBERT DAWSON
Health Club
Home Room Director 3
Sanco 4
Track 2, 3, 4



HOWARD DAWSON
"Dutch"

Commercial Club
Traffic 2

KATHLEEN MARIE DEAN
"Kate" "Kathy"

Entertainment Committee 4
Gift Committee 4
Hilltop Staff 4
Library Aid 2, 3, 4
Literary Club 2, 4
President 3
National Honor Society 3
Secretary 4
President Class 1



JOSEPH ERNEST D'ELIA
"Joe"

Chorus 3, 4
Home Room Director 1



RITA ELEANOR DeFUSCO



GERTRUDE C. DeGRANCE
"Trudy"

Chorus 4
Commercial Club
Costume Mistress 4
Dramatic Club 3, 4
Membership Chairman 4
National Thespians 3, 4



JEANNE R. DELISLE
Commercial Club



RENE L. DELISLE
Commercial Club



EVA RUTH DeMATTOS
"Sunshine"

Commercial Club



HELEN DENNIHEY

Commercial Club



EDNA A. DEPLITCH

"Dip"

Commercial Club



DORIS J. DESJARDINS

"Dot"

Design Guild 1



YVETTE V. DESROSIERS

"Viv" "Duchess"

Design Guild 1
Health Club 2



HELEN MARIE DEVINE

Camera Club 4
Commercial Club 4
Dramatic Club 3, 4
Forum 3, 4
Young Drivers Association



THELMA LOUISE DEXTER

Commercial Club



ISIDORE S. DINERMAN

"Izzy"

Dramatic Club 4
Electrical Club 4
Forum 3



CELIA DOODSON

"Duke" "Cissy"

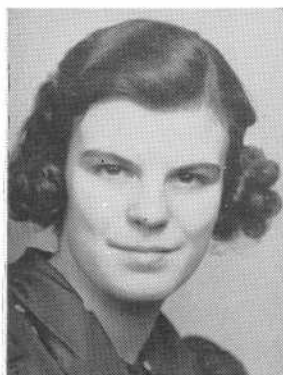
Health Club 2



MARY LOUISE DORSEY



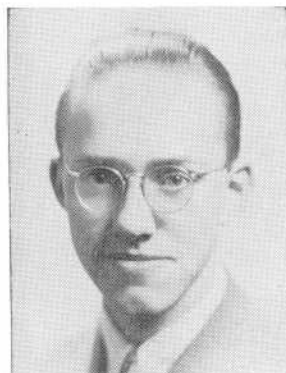
EILEEN JANE DOUGHERTY
Commercial Club



HELEN FRANCES DOUGHERTY
Commercial Club



WINIFRED DOUGHERTY
"Winnie"
Commercial Club



ERWARD A. DRURY
Traffic 3, 4



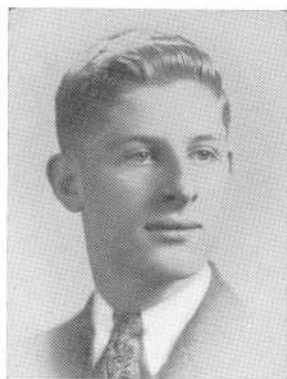
EDWARD C. DUFFY
"Ed"
Chorus 2, 3, 4
Hilltop Sports Editor 4
Home Room Director 2



LOUISE MAY DUFFY
Commercial Club



LUCY E. DUFFY
Advisory Board 4
Home Room Director 1, 2
Library Aid 3
President 4
National Honor Society 3, 4
Pin and Ring Committee 3



THOMAS HENRY DUFFY, JR.

"Tom"

Chorus 2, 3, 4
Track 3, 4



DOROTHY RITA DUGAN

"Dot"

Commercial Club
Home Room Director 2



ANITA L. DUMAS

"Neet"

Hilltop Staff 4
Home Room Director 2, 3
Secretary Girls Numeral Club

GERALD DUNN

"Jerry"

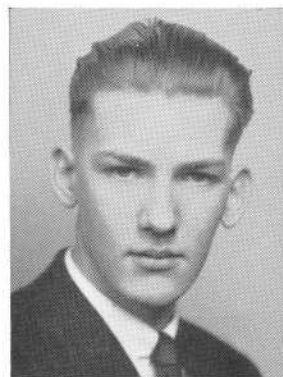
Advisory Board 4
Chorus 4
National Honor Society
Record Book-Assistant Business Mgr.



RUTH MARY DUNN

"Ruthie"

Commercial Club



JOHN ARCHER DURFEE

"Bud"



KENNETH N. DURFEE

"Ken"

CHARLES F. DUTTON

Camera Club 4
Office Aid 2, 4
Young Drivers Association 4

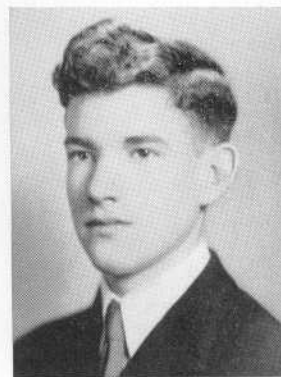




DORIS DYER

"Dot"

Gym Leader 3, 4
Commercial Club



ERNEST EDWARDS

"Sam"



DORIS ELLIS

"Dotty"

Commercial Club

PATRICIA ANNE ELLIS

"Pat"

Cheer Leader 3, 4
Commercial Club
Dramatic Club 3, 4
Girls Numeral Club 3
Gym Leader 3



EVELYN ELLISON

"Ev" "Eve"

Commercial Club
Dramatic Club 4
Library Aid 4

LEONARD EPSTEIN

"Len"

Young Drivers Association 4



JESSE JOSEPH ESTRELLA, JR.

Electrical Club
Home Room Director 4

FRANCIS B. FANNING

"Frank"





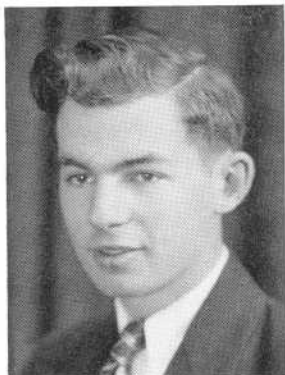
GEORGE C. FARIA

Electrical Club 2, 3, 4
Vice-President 3
President 4



YVONNE MARIE FARINHA

Gym Leader 3
Home Room Director 4
Orchestra 2, 4



JOSEPH FARYNIARZ

MILDRED M. FARYNIARZ

"Milly"

Girls Numeral Club 2
Gym Leader 4
Home Room Director 3, 4
Volleyball 2



CAMELLA ROSE FAZZINA

"Ella"

Commercial Club
Gym Leader 3, 4
Library Aid 3, 4
Traffic Squad 2
Young Drivers Association 4

EDYTHE FELDER

"Edie"

Chorus 3, 4
Commercial Club
Dramatic Club 4
Gym Leader 3
Home Room Director 1, 2



ELEANOR G. FERGUSON

"El"

Camera Club 4
Gym Leader 4
Literary Club 4

LILLIAN M. FERMAN

"Li"

Commercial Club
Dramatic Club 3, 4
Forum 3, 4
Thespians 3, 4

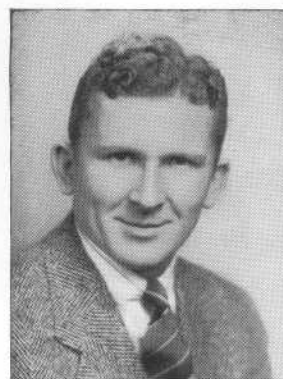




EUGENIE FRANCES FIELD

"Jeanne"

Commercial Club



ROBERT A. FIELD

"Red"

Football 3, 4
Varsity Club 3, 4



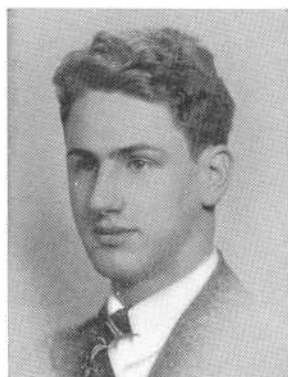
RUTH ELEANOR FIELD

Commercial Club
Literary Club 4



CATHERINE FINUCANE

"Cathy"



FAUST FIORE, JR.

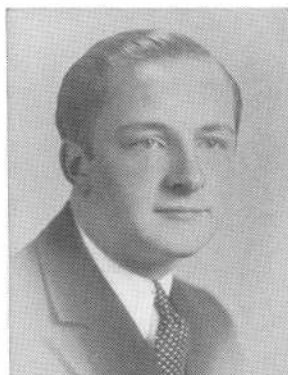
"Pic"

Band 1, 2, 3, 4
Chorus 3, 4 Librarian 3
Orchestra 1, 2, 3, 4
Business Mgr. 4
Young Drivers Association 4



ANNA VERONICA FITZGERALD

Commercial Club



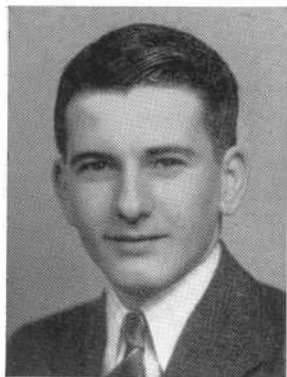
FRANCIS BENEDICT FITZGERALD

"Fitzie"

Orchestra 2, 3, 4
Young Drivers Association 4



GEORGE EARLE FLANAGAN



JAMES FLANNERY

"Buck"



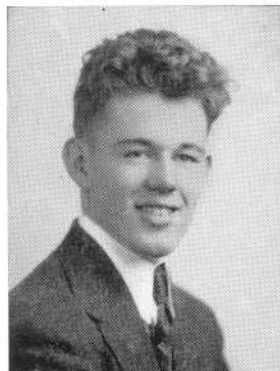
ESTELLE A. FLETCHER

"Stormy"



JOSEPH FLORES

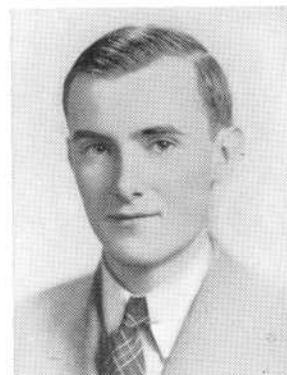
Home Room Director 4



JAMES FLYNN

"Jim" "Flynn"

Commercial Club
Home Room Director 1
Traffic Squad 1



JOHN FRANCIS FOLEY

"Footsy"

Chairman of Dance Committee 4
Chorus 2, 3, 4
Library Aid 2, 3, 4
National Honor Society 3, 4
S. A. A. Boy Councillor 2, 3
S. A. A. President 4



EILEEN M. FRAIN

Commercial Club
Treasurer



LEONARD FREEDMAN

"Zip"

Dramatic Club 3, 4
Call Boy 4
Forum 1, 2, 3



PAULINE FRANCES FRENCH

"Frenchy"

Commercial Club
Home Room Director 2



WILBERT FRIEDLANDER

"Will"

Camera Club 4
Dramatic Club 4



THELMA FULLER

"Thel"

Commercial Club



EUGENE FURTADO

"Don"



EUGENIA G. FURTADO

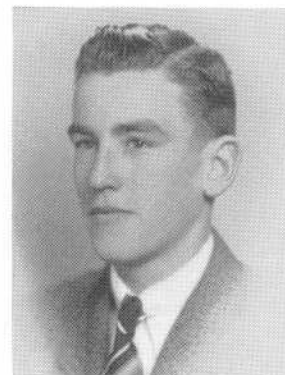
"Gerry" "Gen"



EVA ROGERS FURZE

"Inky"

Camera Club 4
Commercial Club
Chorus 3
Girls Numeral Club 2, 3, 4
Gym Leader 3
Health Councillor 2
Volleyball 2



GEORGE FURZE

"Chick"

Commercial Club
Home Room Director 3



LEO GAFFNEY

"Red"

Basketball 3, 4
Manager 4
Football 3, 4
Varsity Club 4



IRENE A. GAGNON

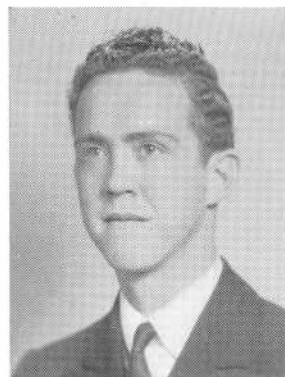
Commercial Club
Secretary
Home Room Director 2, 4
Library Aid 3
National Honor Society 3, 4



THOMAS ANTHONY GALIB

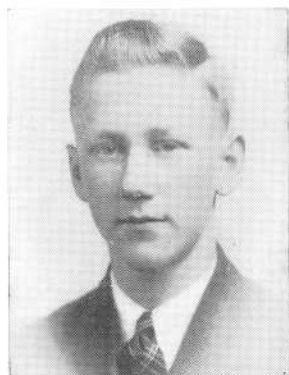
"Fag"

Commercial Club
Home Room Director 4



JAMES V. GALLERY

"Jimmy"



FRANK LEO GALVIN

"Blondie"

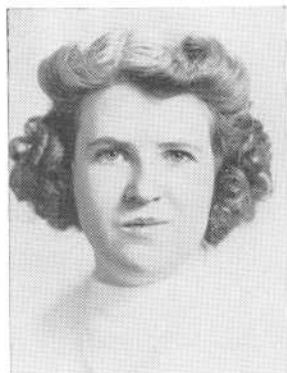
Commercial Club



LORETTA GAMELIN

"Letty"

Commercial Club



DORITA MARY GARDINER

"Doore"

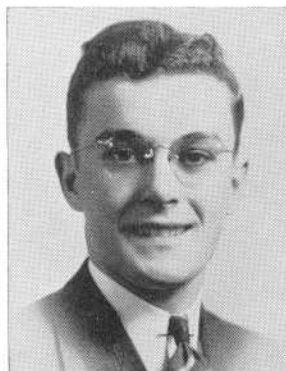
Chorus 4
Gym Leader 4



LAWRENCE R. GARRELL, JR.

"Larry"

Band 4
Commercial Club



RAYMOND GAUTHIER

"Ray"

Commercial Club
Home Room Director 2



EVELYN GIATAS

"Evie"

Commercial Club
National Honor Society



RUTH MARIE GIBBONS

"Scottie" "Gibby"

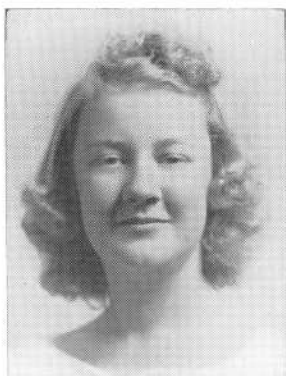
Commercial Club



IRENE FRANCES GIBNEY

"Gib"

Basketball 4
Camera Club 4
Gym Leader 3
Volleyball 2



FLORENCE MAE GIDDINS

"Giggles"

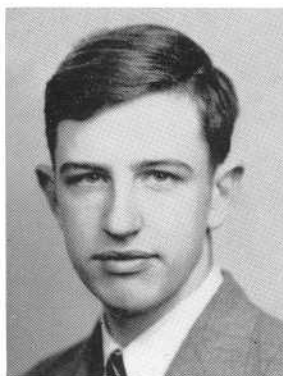
Commercial Club



GERTRUDE GIFFORD

"Gert"

Commercial Club



MALCOLM GIFFORD

IDA SHEILA GINSBERG

"I"

Camera Club 4
Commercial Club
Forum 3, 4
Gym Leader 3
Literary Club 4



ROSLYN GITTLEMAN

Commercial Club
Dramatic Club 3, 4
Recorder 4
Thespians 4

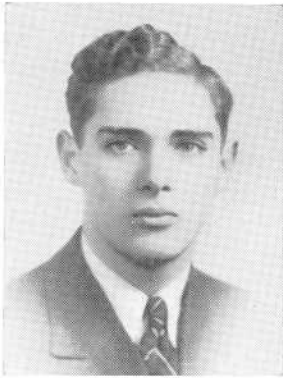


LILLIAN GLOWACKI

"Lil"

Cheerleader 3
Captain 4
Commercial Club
Girls Numeral Club 3
Gym Leader 3, 4
Home Room Director 2
Health Club 2





GEORGE J. GOLLUB

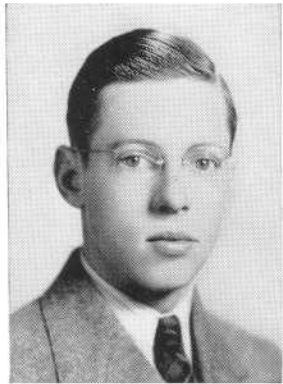
Class Officer 1
Dramatic Club 3, 4
Forum 2
Hilltop Staff
Office Aid 3, 4



EDWARD A. GOSCIMINSKI

"Red"

Football 2, 3
Varsity Club 3, 4



GEORGE A. GRAHAM

"Bud"

Electrical Club 3, 4
Home Room Director 3



SELIMA GREEN

"Sally"

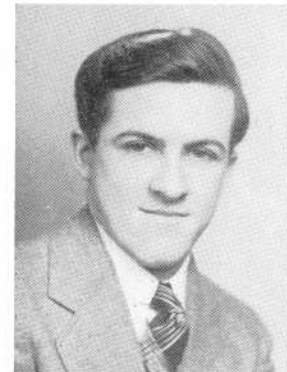
Commercial Club
Dramatic Club 4
Gym Leader 3



ROBERT A. GRENIER

"Bob"

Electrical Club 2



FRANCIS PAUL GRIFFIN

"Grif"



LILLIAN LORETTA GRONDIN

"Lil"

Commercial Club



GERTRUDE R. GUERETTE

"Gert" "Frenchie"

Commercial Club



DORIS HAGUE

"Dot"

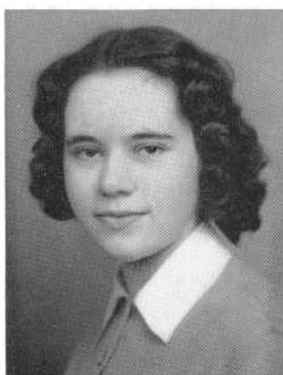
Commercial Club
Dramatic Club 3



PHILIP S. HAKEEM

"Swede"

Electrical Club 2, 3
Football 3



HELEN PATRICIA HALPIN

Commercial Club
Dramatic Club 3, 4



RUTH HALSHAW

Class Officer 1
Commercial Club
Health Club Councillor 2



JACQUELINE M. HAMEL

"Jackie"

Home Room Director



JOSEPH EDWARD HANIFY, JR.

Camera Club 4
Vice-President
Dramatic Club 3, 4



VELMA LOIS HARDY

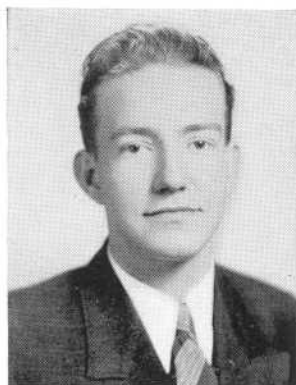
"Vel"

LOUISE ELIZABETH HARGRAVES

"Lou" "Pinky"

Home Room Director 3, 4

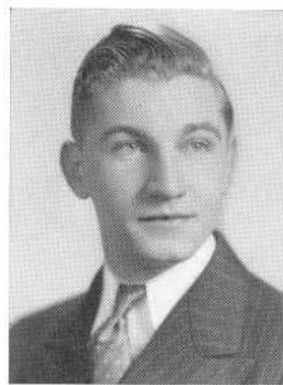




WILLIAM EDDY HARPER

"Bill" "Tex"

Band 2
Camera Club Treasurer 4
Chorus 2
Home Room Director 4
Office Aid 3, 4
Orchestra 2
Senior Dance Committee 4



JAMES T. P. HARRISON

"Jay"



RUTH ELIZABETH HARRISON

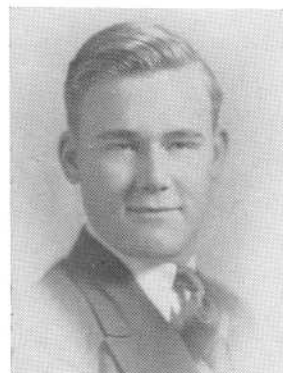
Dance Committee 4
Dramatic Club
Girl Councillor of S. A. A. 3, 4
Health Councillor 2
Hilltop Staff 4
Home Room Director 2
Library Aid 3, 4
Vice-President of Soph. Class



ROBERT E. HARTE

"Bullets"

Basketball 2
Football 2, 3, 4
Varsity Club 4



JOHN RUSSELL HARTLEY

"Porky" "Russ"



THOMAS HENRY HARVEY

"Tom"



BLANCHE CECILLE HASKINS

"Duke" "Blanchey"

Commercial Club



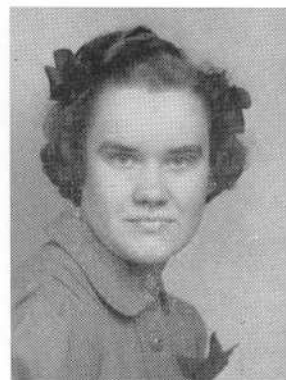
IVY HATHAWAY

"Inky No. 3"

Camera Club 4
Commercial Club



RALPH HATHAWAY



RUTH ELIZABETH HATHAWAY



EVERETT WALTER HAWORTH

"Buck"

Home Room Director 2, 4
Traffic Squad 2, 3, 4
Second Lieutenant 4

MARGARET FRANCES HAYES

"Marge"

Camera Club 4
Hilltop Staff 4
Home Room Director 4



ERNEST H. HEBERT

"Erny"

Commercial Club

THOMAS J. HENRY, JR.

"Jickie"

Young Drivers Association



RALPH AUSTIN HENTERSHEE

"Austin" *"Woof"*

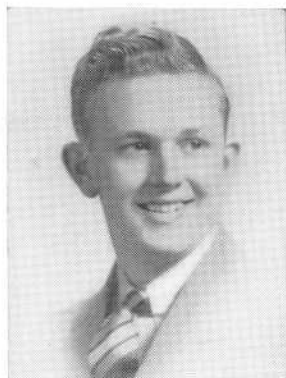
Chorus 2
Traffic Squad 2, 3

FRANK HEYS, JR.

"Perky"

Dramatic Club 4
Literary Club 4
Traffic Squad 4





WILLIAM HIBBERT

"Bill"



THOMAS LOUIS HICKEY

Dramatic Club 4
Electrical Club 2, 3, 4
Treasurer 4



RALPH RITTER HIGGINS

Library Aid 3, 4
Photographic Committee 4
Chairman



ROSEMARY PATRICIA HIGGINS

Commercial Club



THOMAS F. HIGGINS

"Tommy" "Tom"

Office Aid 4
Traffic Squad 2, 3
First Lieutenant 4
Young Drivers Association 4



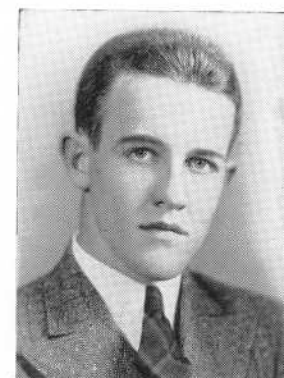
MALCOLM LEONARD HILTON

Chorus 2, 3



JOHN FRANCIS HINCHCLIFFE

"Jack" "Hinch"



PAUL THOMAS HINCHEY

"Hinch" "Rock"



RUTH ANN HINDLE



ISABELLE HODKINSON
"Izzy"

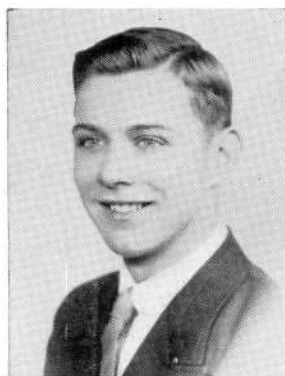


DOROTHY FRANCES HOLLAND
"Dot"



DOROTHY LOUISE HOLLAND
"Dot"

Camera Club 4
Young Drivers Association 4
Gym Leader 3



EDWARD F. HOLLAND
"Mickey"

Commercial Club
Office Aid 4



KENNETH B. HOLT
"Ken"



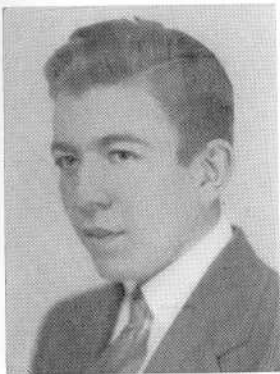
RUTH MARION HOLT
"Rudy"

Commercial Club
Dramatic Club 4
Home Room Director 2
National Honor Society 3
Sanco Guide 2

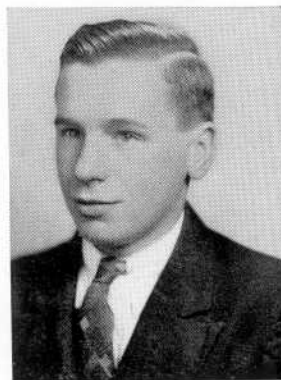


NATALIE MADELINE HORTON
"Nat"

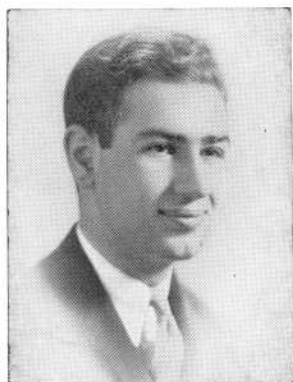
Bus. Manager of Hilltop 4
Dance Committee 4
Dramatic Club 3, 4
Gym Leader 3
Home Room Director 3



DANIEL HORVITZ
"Danny"



HAROLD D. HOUGHTON
Electrical Club 4



CARLYLE HAROLD HURWITZ
"Collie"

Camera Club President 4
Dramatic Club 3, 4
National Honor Society
Orchestra 2
Thespians 4
Young Drivers Association 4

J. MILTON INGHAM
"Milt"

Home Room Director 2, 4
National Honor Society 3, 4



LENA IODICE
"Lee"

Commercial Club
Home Room Director 1

CHARLES PRESTON ISHERWOOD
"Chuck"

Dramatic Club 3, 4
Vice-President 4
Young Drivers Association 3
Sargeant-at-arms 4



GRACE E. ISHERWOOD
"Isb"
Chorus 2, 3, 4



MARGARET IZZIR
"Maggie"



HELEN JEAN

"Jeanne"

Commercial Club



MARY DELORES JENKINS

Dramatic Club 4



ROBERT B. JENKS

"Bob"



ARLENE JOHNSTON

Commercial Club
Sanco Guide 4



BARBARA JONES

"Barb"

Library Aid 3, 4
National Honor Society 3, 4
Young Drivers Association 4



MARION HARDING JONES

"Jonsie"

Gym Leader 4
Health Club 2
Record Book Staff
Assistant Editor
Sanco Guide 2



VIRGINIA ANNE JONES

"Jin" "Jini"

Gym Leader 3, 4
Home Room Director 1, 4



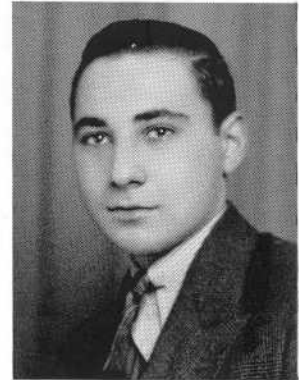
RITA F. JOUBERT

"Shorty"

Commercial Club



RITA JOYCE



HENRY J. KAHN

"Hank"

Gift Committee
Home Room Director 2, 3
National Honor Society 3, 4



JOHN KALISH



FLORENCE MAE KAPLAN

"Floss"

Camera Club 4
Chorus 4
Dramatic Club 4
Thespians 4



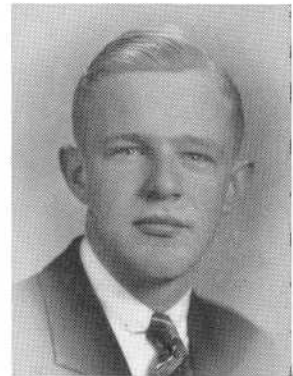
GRACE DOROTHY KAY

Class President 3, 4
Dramatic Club 3, 4
Health Club President 2
Hilltop, Assistant Editor 4
Home Room Director 2
Library Aid 3, 4
Entertainment Committee
Literary Club 3
National Honor Society 3, 4
Pin and Ring Committee 3, 4
Young Drivers Association 4

LEONARD BRAYTON KAY

"Len"

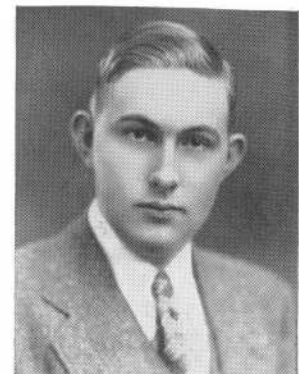
Commercial Club



DORA KAZANTZIS

"Dee"

Commercial Club
National Honor Society 3, 4



WILLIAM HENRY KEETLEY

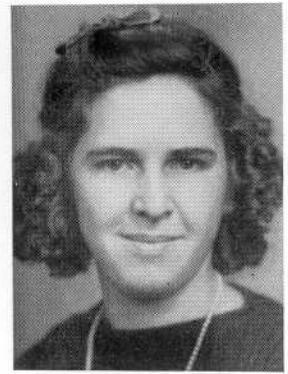
"Bill"



MARY VERONICA KELLEY

"Kell"

Commercial Club
Home Room Director 4



DORIS KELMAN

"Dottie"

Commercial Club



ELEANOR KENNEY

"Prunie" "El"

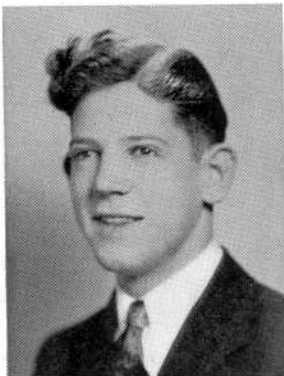
Gift Committee
Home Room Director 3



BARBARA ESTELLE KERSHAW

"Bobbie"

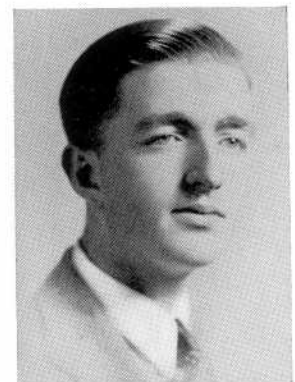
Orchestra 2



EDWARD G. KING

"Eddie"

Commercial Club



HENRY J. KITCHEN

"Kitch"

Office Aid 3, 4

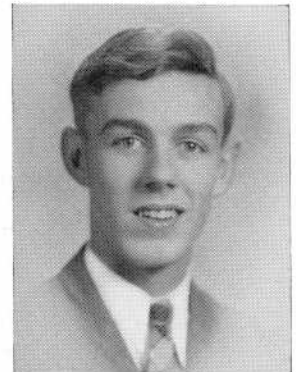


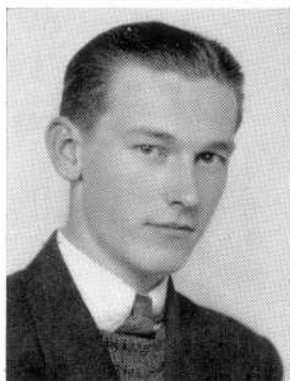
EILEEN M. KNABE

RUSSELL PACKARD KNEEN, JR.

"Barney"

Basketball 3, 4
Gift Committee
Home Room Director 2, 3, 4
President 4
S. A. A. Council 4
Tennis 2, 3, 4
Varsity Club 3, 4





LEONARD LEWIS KONARSKI

"Lindy"



BESSIE KONDOS

Commercial Club



BERTHA KOSSOL

"Bubby"

Commercial Club



ANTOINETTE KOWALSKI

"Ann" "Toni"

Commercial Club



CHESTER M. KULPA

"Chet"

Basketball 2



CHARLES C. LADEIRA

"Charlie" "Luckey"

Electrical Club 4
Traffic Squad 1, 2, 3



MARJORIE RUTH LAFLEUR

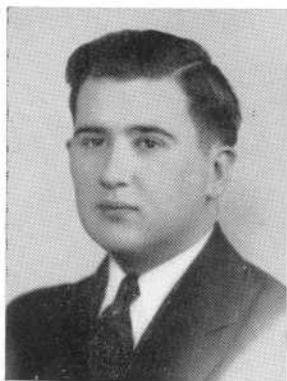
"Marge"

Advisory Board 4
Dramatic Club 3, 4
Forum 2, 3
Home Room Director 2
National Honor Society 3
Secretary of Class 2
Traffic Squad 2
Vice-President of Class 3



MARY LOUISE LA FOREST

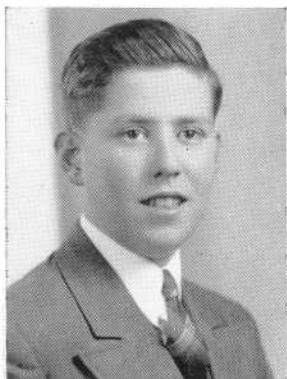
Commercial Club



EDWARD LAGE



LORRAINE LAJOIE



MARCEL A. LAMOUREUX

"Frenchie"

Traffic 3



EDWIN LAROCHE

Band
Commercial Club
Orchestra



ARMAND LAVALLEE

"Fat"

Basketball 2, 3, 4
Varsity Club 4



LORRAINE LAVOIE

"Lorry"

Commercial Club



THERESA LAVOIE

"Tess"

Commercial Club



HELEN E. LAWRENCE

Commercial Club



MARION LAWRENSON

"Tiny"

Commercial Club
Home Room Director 2, 4

WILLIAM NERR LAWTON

"Bill"

Durfee Hilltop Editor-in-Chief
Health Councillor 2
Home Room Director 2
Literary Club 2
Vice-President 3
Pin and Ring Committee 3
Chairman 4

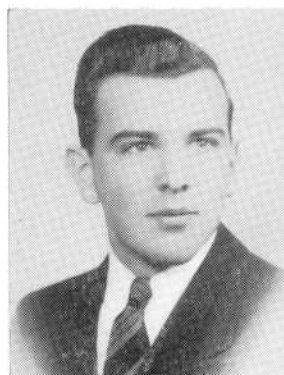


GERTRUDE J. LeDOUX

"Gert"

Home Room Director 3
Library Aid 2, 3, 4
National Honor Society 3, 4

NORMAN A. LeDOUX



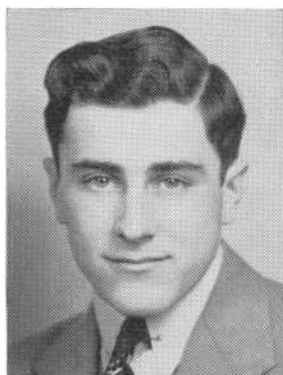
ERNEST LEE

"Ernie"

LAURA A. LEITE

"Larry"

Commercial Club



FERNAND A. LEMAY

"Ferny"

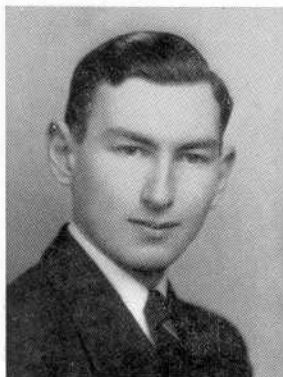
Hilltop Staff

JOSEPH A. LENNON, JR.

"Joe"

Home Room Director 4





ALEXANDER LEVINE

"Al"

Camera Club 4
Electrical Club 3, 4
Secretary 3, 4
Dramatic Club 4

ESTHER LEVINE

Band 4
Girls Numeral Club 2, 3
Hilltop Staff 4
Home Room Director 2
Traffic Squad 2
Volleyball 2
Young Drivers Association 4



SOLOMON S. LEVINE

Band 2, 3
Dramatic Club 3, 4
Football 1, 2
Forum 3, 4
Home Room Director 3
Young Drivers Association 3, 4

ANNE MILDRED LEWIS

Commercial Club



JOHN GRAHAM MURRAY LEWIS

"Shorty"

BEATRICE LIMA

"Bea"

Chorus 3
Commercial Club
Dramatic Club 3
Forum 4
Gym Leader 3



BARBARA LISET

"Babs"

HELEN T. LORD

Home Room Director 2, 3





SHIRLEY LOTTO

"Shrimpy"

ALLAN LEWIS LUBINSKY

"Lub"

Dramatic Club 3, 4
Literary Club 3, 4
Orchestra 2, 3
Thespians 4



WILLIAM J. LUBY

"Bill"

Electrical Club 2, 3, 4

DANIEL EDWARD LYNN

"Dan"

Commercial Club
Health Councillor 2



PHYLLIS A. LYONS

"Phyll"

EDWARD MACHADO

Football 3, 4



ROGER MACOMBER

"Mac"

Traffic Squad, 2, 3, 4
Co-captain 4

ROSELLA E. MACOMBER

Commercial Club



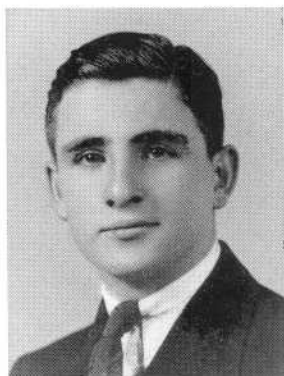


THOMAS NATHANIEL MADDEN

"Tom" "Pete"



REINA MAILLOUX



FRANK MALLOY



STAMOS MALTEZOS

"Stom"

Home Room Director 2
Traffic Squad 3



MADELINE MANCHESTER

"Madge"

Commercial Club



JESSIE MANISHEFSKY

"Jess"

Chorus 3, 4
Dramatic Club 3, 4
Forum 2
Girls Numeral Club 3
Traffic Squad 2
Secretary 3
Volleyball 2, 3



ANGELA THERESA MARCHESI

"Angie"

Commercial Club
National Honor Society 3
Health Club Secretary 2



ANDREW MILTON MARSHALL, JR.

"Andy"

Commercial Club



AGNES CECELIA MARTIN

Commercial Club



FRANCISCO MARTIN

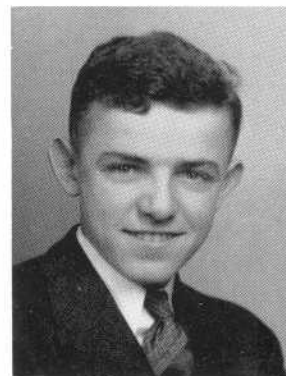
Commercial Club
Traffic 2, 3, 4



JOSEPH WILLIAM MARTIN

"Pepper"

Baseball 3, 4
Basketball 2, 3
Health Club 2



THOMAS E. MARUM, JR.

"Tom"

Home Room Director 1
Young Drivers Association 4



MADELINE A. MAZIARSKA

Commercial Club



EUGENE McCARTHY

Basketball 2, 3, 4
Football 2, 3
Captain 4
Varsity Club 3, 4



JOHN K. McCLOSKEY

"Mac"



GLADYS ELAINE McCROSSAN

"Mac"

Camera Club 4
Chorus 2, 3, 4



MARGARET ANN McDONALD

"Peggy" "Peg"

Commercial Club
Record Book Staff
Assistant Business Manager



EDNA MARY McGOUGH

"Mac"

Chorus
Commercial Club



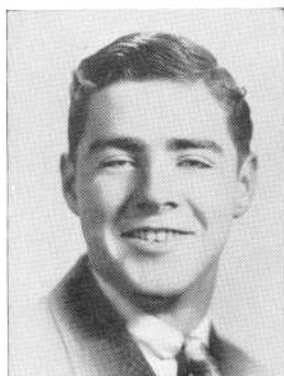
OWEN T. McGOWAN

"Mac"



MARY L. McGRATH

Commercial Club
Home Room Director 2



RAYMOND JOSEPH McMULLEN

"Mac" "Ray"

Home Room Director 2



MARION ANNE McPARTLAND

"Mac" "Red"

Forum 2, 3, 4
Library Aid 2, 3
Secretary 4



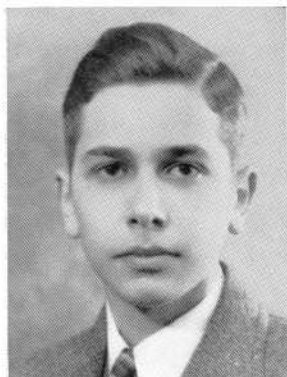
FRANCIS THOMAS MEAGHER

"Red"



HENRY MEDEIROS

Commercial Club



DANIEL MELLO

"Danny"



GEORGE E. MELLO

Home Room Director 2
National Honor Society 3



CATHERINE M. MELLOR

"Kay"

Commercial Club



RUTH MELLOR

"Ruthie"

Commercial Club
Gym Leader 3



MARY ELIZABETH MERRITT

"Mary Lib"

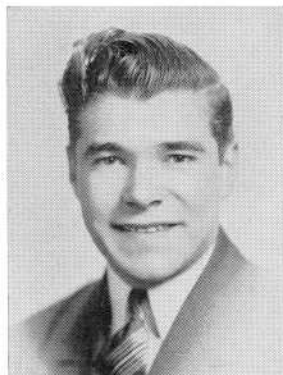
Chorus 2
Gift Committee



AGNES MICHAEL

"Aggie"

Commercial Club



WILFRED J. MICHAUD

"Pete"

BERNARD MILLER

"Bernie" "Bing"

Dramatic Club 3
Forum 2, 3
Literary Club 1
Vice-President 2
Young Drivers Association 3

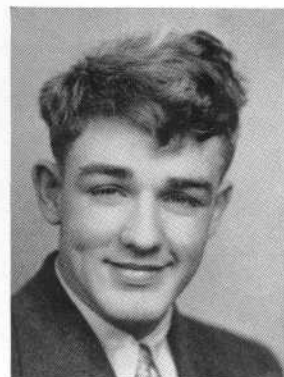




LOIS MARCIA MILLER

"Lo" "Bunny"

Commercial Club



WALTER MILNE

Library Aid 3, 4



ETHEL MINTZ

"Mintzy"

Chorus 3, 4
Commercial Club
Forum 1, 2
Literary Club 4



JOHN J. MITCHELL

"Jack"

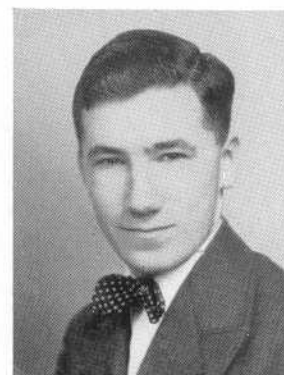
Commercial Club



JOSEPHINE MIRIAM MODLOWSKI

"Jo"

Commercial Club



EARLE C. MOLYNEUX



ALBERT MOORE

"Al" "Red"

Basketball 3, 4
Varsity Club 4



ELSIE P. MORIN

"Elsie"

Home Room Director 2, 4



LESTER MORTON, JR.

"Let"

Commercial Club



ANDREW MOYNAGH

"Andy"



BARBARA E. MURRAY

"Babs" "Bobby"

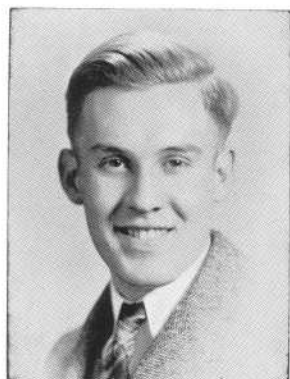
Chorus 2, 3, 4



CHRISTINE SUSAN MURRAY

"Chris"

Dramatic Club 4
Home Room Director 2, 3
Literary Club 3, 4
Thespians 4



CLARENCE MURRAY

"Snooks"

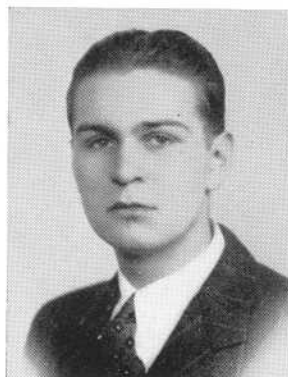
Health Councillor 2
Traffic Squad 4



GLADYS MYCOCK

"Glad"

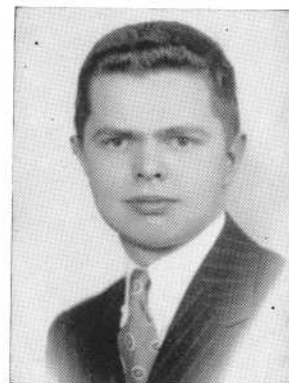
Hilltop Staff 4



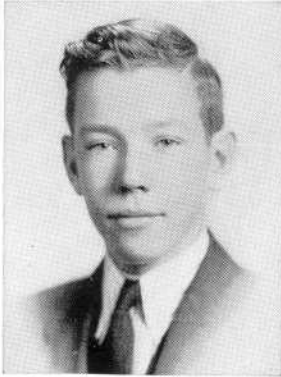
DAVID WILLIAM NADIEN

"Si" "Ivories"

Chorus 2, 3
President 4
Dramatic Club 3
Orchestra 2, 3, 4

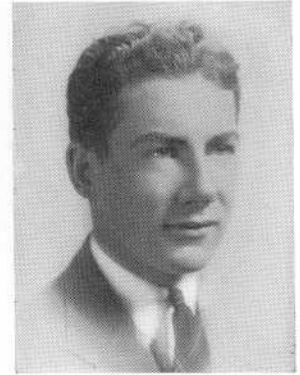


RALPH E. NELSON



ROBERT EDWARD NEWBURY

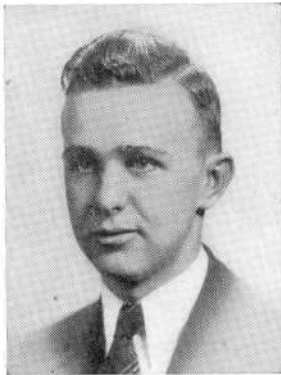
"Huck"



EDWARD NEYLON

"Ebbö"

Basketball 4
Football 2
Varsity Club 4



ALECK NICKIPOR

"Nick"



WILLIAM NISBET

"Scotty"



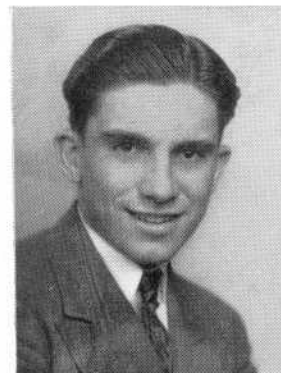
OLGA NOVETSKY

Commercial Club
Dramatic Club 3, 4
Thespians 4



MARGARET M. O'BRIEN

"Peggy"



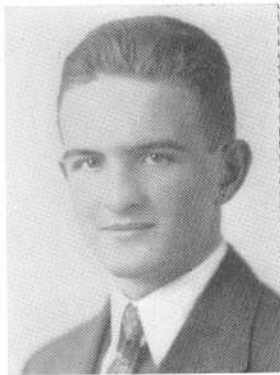
NORMAN O'BRIEN

"Norm"



DOROTHY M. O'CONNELL

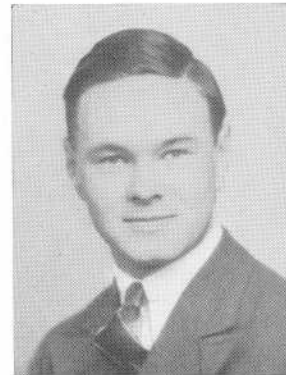
"Dot"



EDWARD O'CONNELL

"Okie"

Basketball 3
Football 3, 4
Varsity Club 4



JAMES W. O'DONNELL

"O. D"



JOHN ODYNECKY

"Od"

Electrical Club 3, 4



MARGARET V. O'GRADY

"Marge"



MONICA TERESA O'GRADY

"Monnie"

Forum 4



EILEEN MAY O'NEIL

"Eenie"

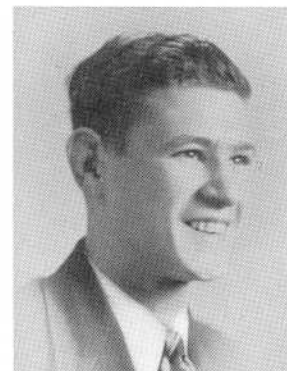
Chorus 4
Commercial Club
Hilltop Staff 4



GERALD PATRICK O'NEIL

"Jerry"

Record Book Staff
Assistant Editor



HOWARD ORMEROD

"Chuck"



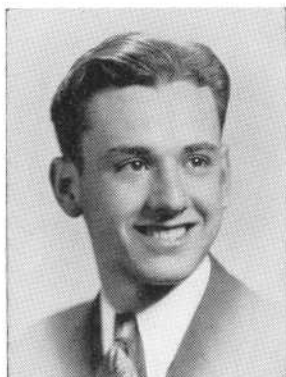
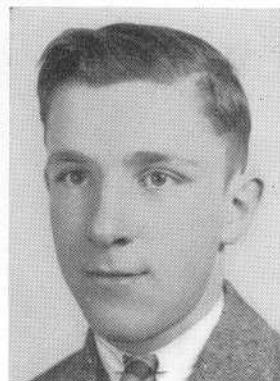
LORRAINE LORENA PACHECO

Chorus 3, 4
Forum 2, 3, 4
Home Room Director 1, 2
Library Aid 4
Literary Club 2, 3, 4
Young Drivers Association 4

ERNEST J. PAIN

"Ernie"

Home Room Director 1



JOSEPH PAIVA, JR.

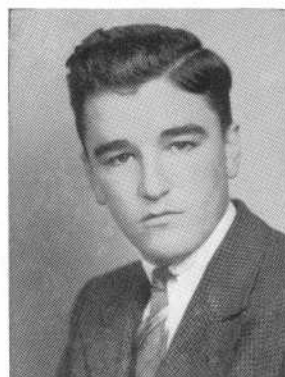
"Joe"

Commercial Club

NORMAN PARADIS

"Norm"

Commercial Club
Young Drivers Association 4

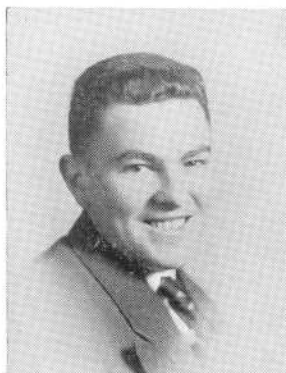


HENRY PARENT

"Chick"

ANNE PARTINGTON

Home Room Director 3, 4
Photographic Committee



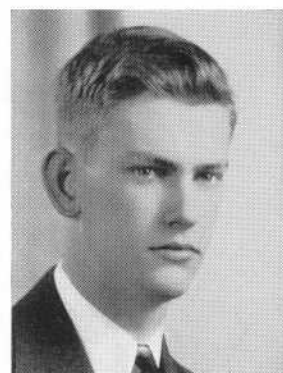
FRANCIS PATOTA

"Frank"

THOMAS PATTEN

"Tutt"

S. A. A. Councillor 4





IRENE FRANCES PATTERSON

"Patty"

Commercial Club
Gym Leader 3



GERTRUDE LORRAINE PAULHUS

"Gerl"



ANDREW PEARSON, JR.

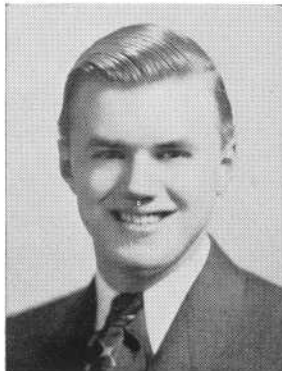
Band 4
Orchestra 4



LUDGER J. PELLETIER, JR.

"Bud"

Home Room Director 2, 3, 4
Football Manager 4
Office Aid President 4
Varsity Club 4



RUSSELL PELLETIER

"Russ"



MABEL PERRY

Dramatic Club 3, 4
Gym Leader 3, 4
Home Room Director 2
Dance Committee



JAMES J. PHELAN

"Jimmy"

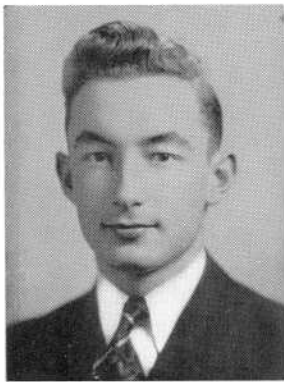
Commercial Club



FAITH PICKUP

"Faye"

Commercial Club



EDWARD WALTER PIENIADZ

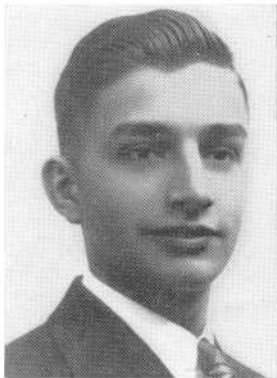
"Eddie"

Band 2, 3
President 4
Home Room Director 2, 3

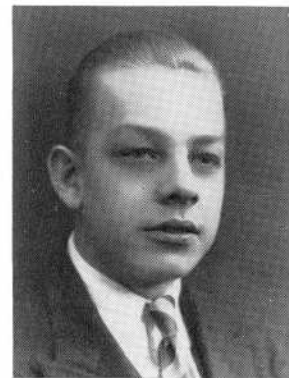


DWELLO R. PIERI

Football 2, 3, 4
Varsity Club 2, 3, 4



THADDEUS A. PIETRASZEK



WILLIAM W. PITERA

Commercial Club
Health Councillor 2
National Honor Society 3



CHESTERA M. PLICHTA



THADDEUS C. PLOCICA

"Ted"

Band 4
Electrical Club 3, 4



MADELINE NATALIE POGUBILA

Commercial Club
Health Councillor 2
Home Room Director 3



LILLIAN POIRIER

"Lil"

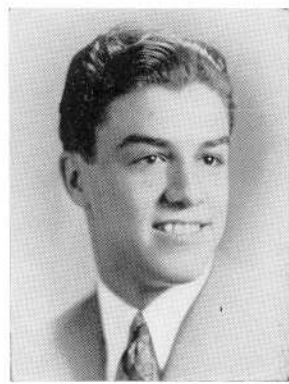
Commercial Club



HENRY POLLARD

"Polly"

Camera Club 4
Commercial Club
Traffic Squad 3
Second Lieutenant 4



FRANK PONTE

Commercial Club
Football 4



HAZEL MAE POOLE

"Puddle"

Commercial Club
Home Room Director 2



EVELYN PREBLUDA

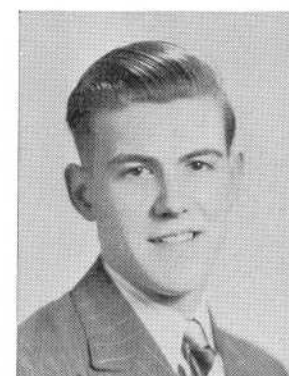
"Revvy"

Forum 2, 3
Health Councillor 2
Traffic 2



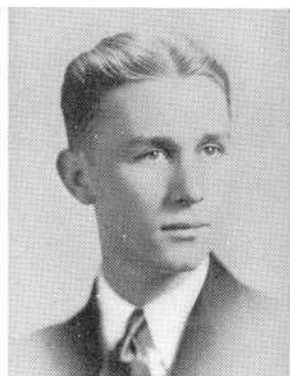
WARREN S. PREBLUDA

Advisory Board 4
Chorus 1, 2
Debating 2, 3
Forum 1, 2
Secretary 3, President 4
Hilltop News Editor
Library Aid
National Forensic League 3
Secretary 4
National Honor Society 3, 4
S. A. A. Councillor 1



HERBERT J. QUINLAN

"Herb"



RAYMOND J. QUINTIN

"Ray"



RUSSELL E. RADCLIFFE

"Rus"

Commercial Club
Home Room Director 1



AVIS RADOVSKY

"Red"

Debating 2
Dramatic Club 3
Secretary 4
Forum 2, 3
Hilltop Staff 4
Literary Club 2, 3



STANLEY RAK

Electrical Club 4



MABEL E. RALPH

"Ralphie"

Commercial Club



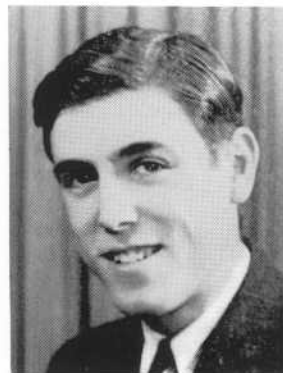
JOHN RAPOSA

Commercial Club



LEO RAPOSA

Commercial Club



HENRY RAPOSA

"Spud"



THEODORE RAZOOK

"Teddy"

Traffic Squad 2, 3, 4



ERNEST REAGAN

"Dutchy"



JOHN S. REED



EDMUND REGO

"Eddie"

Electrical Club 3
Health Club 2



INCARNATION M. REGO

"Connie"

Home Room Director 2, 3



LYDIA REGO

"Lid"

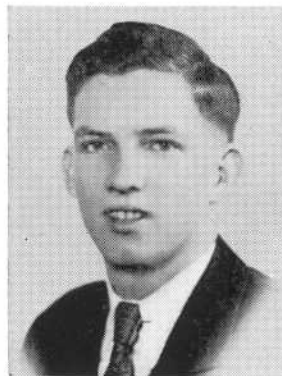
Camera Club 4
Commercial Club



ANNA FEDERICA REGOLI

'Reggie'

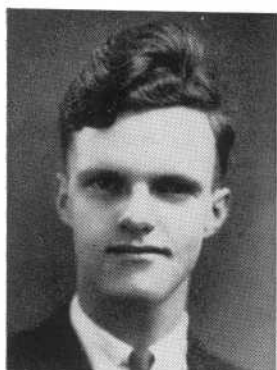
Commercial Club
Gym Leader 3, 4



HERBERT BLAINE REID, JR.

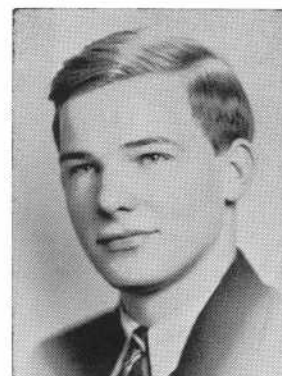
"Herb" "Gunner"

Commercial Club



KENNETH RUSSELL REID

"Ken"



ROBERT B. REID

"Bob"



WILLIAM REIS

"Bill"



HELEN RENAUD

Commercial Club



ALBERT RESNICK

Debating 4
Forum 1, 2
Home Room Director 2, 3



MILTON RHODES

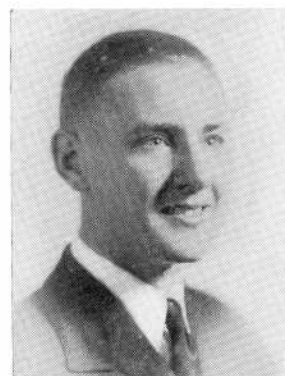
"Milt"

Chorus 2, 4
Class Vice-President 4
Gift Committee
Home Room Director 2



ARTHUR R. RICHARD

"Curley"



WILLIAM G. RIEGEL, JR.

"Kid Wires"

Track 3, 4



MARY MARGARET RILEY

Commercial Club
Gym Leader 3



WHITTAKER RIVERS

"Whit"

Office Aid 2, 3, 4



RHEA ANNE ROACH

Hilltop Staff 4
Literary Club



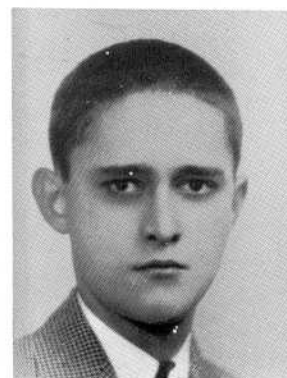
ANNE FRANCES ROBERTS

Commercial Club



LOUIS ROBILLARD

Commercial Club
Traffic Squad 2, 3, 4



FREDERICK ROBINSON

"Ike"



JUSTINE ANNE ROBINSON

Commercial Club



OLIVE ROCK

Commercial Club



OLIVE LOUISE ROE

"Ollie" "Polly"



NORMAN ROSS

"Buster"

Commercial Club



HELEN ROSZKOWICZ

National Honor Society 3, 4
Traffic Squad 2



ALFRED ROTHWELL

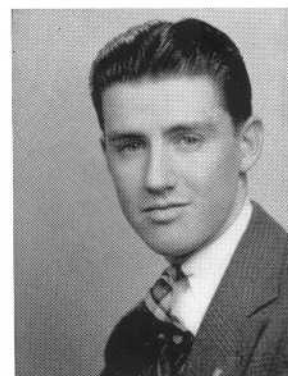
"Al"

Chorus 3
Dramatic Club 4
Traffic 2



CHESTER ROZYCKI

"Chet"



THOMAS RYAN

"Tommy"

Baseball 3, 4
Captain 4



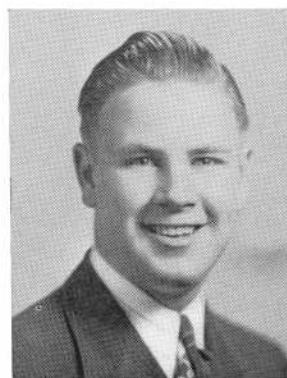
PHYLLIS RYDER

"Phyl"

FREDERICK St. AMOUR

"Fred"

Chorus 3, 4
Commercial Club
Dramatic Club 3
Home Room Director 2, 3, 4



RITA C. St. AMOUR

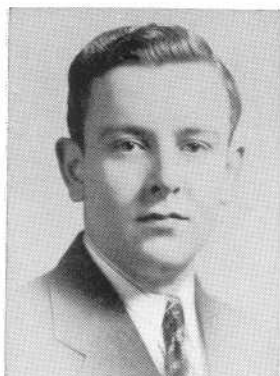
Class Secretary 4
Commercial Club
Girls Numeral Club
Advisor 2, Vice-Pres. 3
Home Room Director 3, 4
Photographic Committee
Volleyball Captain 2



RAYMOND St. GERMAIN

Chorus 3, 4
Commercial Club





BERTRAND St. LAURENT

"Bert"

Library Aid 4
Literary Club 4
Office Aid 4



ATHENA SAMITAS

Home Room Director 2



JOHN SARDINHA

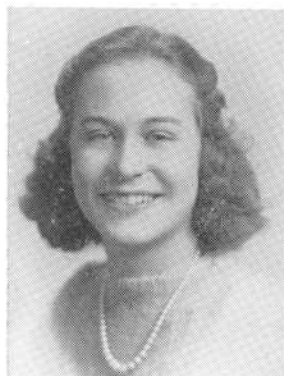
"Sardi"



HENRY SAUCIER

"Hank"

Traffic Officer 4



ISABELLA K. SEAMAN

"Issy"

Commercial Club



MICHAEL SHAKER

"Mickey"

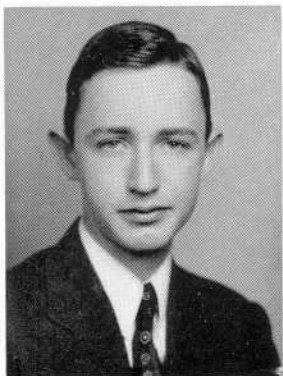


ROLAND SHAW



EILEEN T. SHEA

"Vicky"



JOSEPH EDWARD SHELLEY, JR.

Dramatic Club 4
Home Room Director 2
Library Aid 3, 4
Vice-President 4
Young Drivers Association 4



MARY SILVA

Hilltop Staff 4



JEANETTE S. SILVER

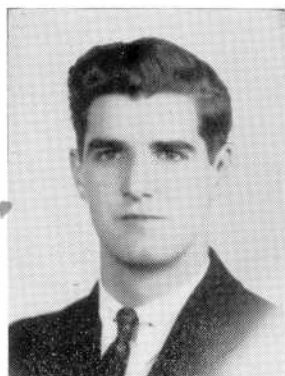
"Jeannie" "Hi Yo"

Commercial Club
Dramatic Club 3, 4
Forum 2
Thespians 3, 4
Secretary 4



IRENE SIMAS

Commercial Club



JOHN M. SIMAS, JR.

Traffic Squad 2, 3



CLAIRE FRANCES SIMMONS



SAMUEL MATHEW SIMON

"Sam"

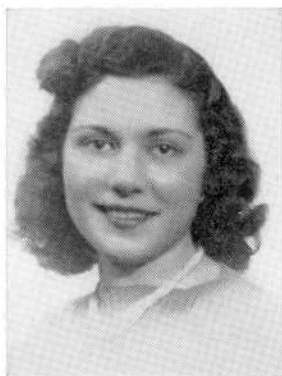
Commercial Club
Football 3



YVONNE SIMONIN

"Vonnie"

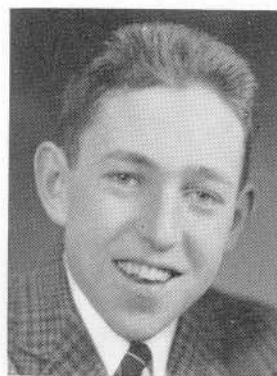
Commercial Club



GERALDINE SIMPSON

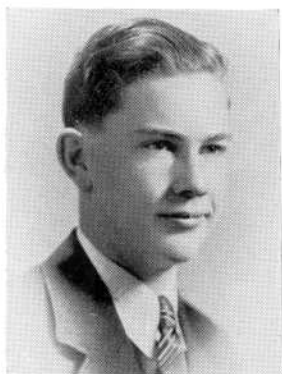
"Gerry"

Band 2, 3, 4
Chorus 2, 3, 4
Dramatic Club 3, 4
Home Room Director 2, 4
Orchestra 2, 3, 4
Secretary of S. A. A. 2



JAMES ROGER SISSON

Young Drivers Association
Vice-President 4



HUGH FRANCIS SKELLEY

"Copper"

Traffic 2, 3, 4



WILLIAM SKRZYBIEC

"Bill"

Band 4



CHARLOTTE SLAIDING



EDITH SLAVITSKY

"E" "Edie"

Camera Club 4
Commercial Club



ELEANOR CLARA SLUSARSKA

Commercial Club



LAWRENCE SMITH

"Larry"

Commercial Club



MARGARET SMITH

"Peggy"



SHAFEEK SMITH

"Smitty"

Band 4
Chorus 4
Electrical Club 4
Traffic Squad 4



SYLVIA BARKER SMITH



ROBERT SOKOLL

"Bob" "Sok"

Camera Club 4
Dramatic Club 3, 4
Forum 2
Home Room Director 2
Literary Club 2, 3, 4
President 4
Thespians 3, 4
President 4



ROGER SOUCY

Commercial Club



LORA C. SOUSA



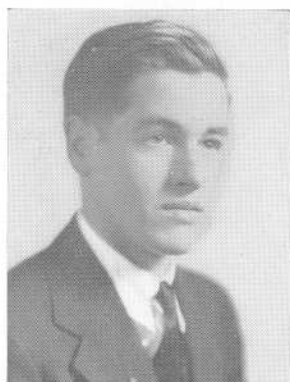
ANTONE C. SOUSA

"Tony"



JOHN SOUZA

Commercial Club



JOSEPH CROWE SOUZA

"Joe"

Band 4
Commercial Club
Health Councillor 2
Traffic 3, 4



HARRIETT DIANE SPARKS

Young Drivers Association 4



GEORGE SPILLMAN

Commercial Club



EDNA SPIVEY

"Spiv"



LOUISE STAPLES

"Lou"

Commercial Club



RUTH STASIOWSKI

Commercial Club



WILLIAM JAMES STEEN, JR.

"Bill"

FRANCES STIENBERG

"Fel"

Camera Club 4
Commercial Club
Dramatic Club 3, 4

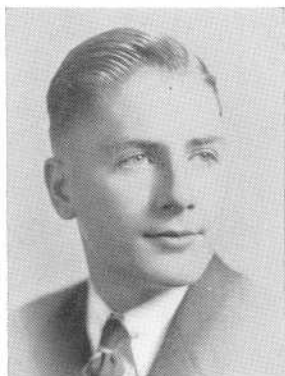




JOHN STOCKTON
"Jack"



MILTON STONE
"Stoney"
Hilltop Staff 4
Office Aid 4



JAMES STOTT
"Jim"
Advisory Board 4
Baseball 3, 4
Camera Club 4
Electrical Club 4
Home Room Director 1, 3, 4
National Honor Society 3, 4



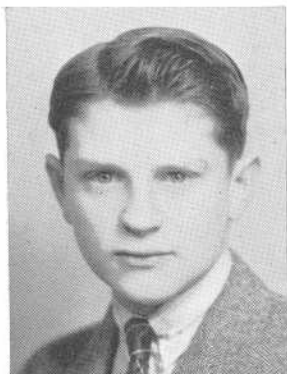
SALLY PERKINS STOVER
"Sal"
Advisory Board Chairman 4
Library Aid 2, 3, 4
National Honor Society 3, 4
President 4
Student Council 2, 3, 4
Vice President 4



EUGENIA STRYCHARZ
"Jean"



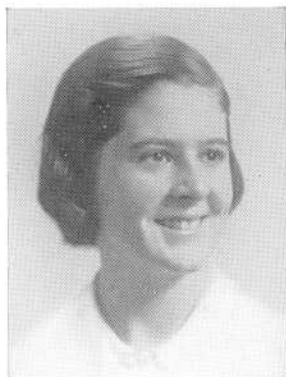
ANN MARIE SULLIVAN
Band 2, 3, 4
Chorus 2, 3, 4
Commercial Club
Orchestra 2, 3



E. JUSTIN SULLIVAN
"Jut"



FRANCIS PAUL SULLIVAN
"Frank"
Photographic Committee



MARGARET H. SULLIVAN

Home Room Director 3



MARY HOLLAND SULLIVAN



RITA SULLIVAN

Commercial Club



MARION ELIZABETH SUNDERLAND

"Sun"

Commercial Club
Gym Leader 4
Health Councillor 2



RUTH M. SUNDERLAND

"Sundy"

Commercial Club



ESTELLE SUSSMAN

"Sussie"

Dramatic Club 3, 4
Health Councillor 2
Thespians 3, 4
Treasurer 4
Young Drivers Association 3, 4



FRANCIS L. SWEENEY, JR.

Commercial Club



HELEN E. SYLVIA

"Penny"



EARLENE D. TATTERSALL

"Earl"

Camera Club 4
Commercial Club
Health Club 2
Home Room Director 4



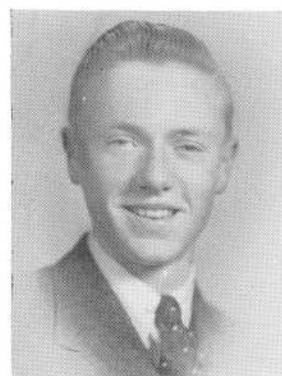
EDITH MARION TAYLOR

"Ede"

Commercial Club
Gym Leader 3, 4



NORMAN TAYLOR



WILFRED TAYLOR, JR.

Home Room Director



ELEANOR TEASDALE



KENNETH R. TEASDALE

"Ken"



RITA THISTLETHWAITE

Commercial Club
Health Club Councillor 2
Home Room Director 2, 3
National Honor Society 3, 4



MABEL CAROLYN THORNLEY

"Mae" "Maribelle"

Commercial Club
Literary Club 4
National Honor Society 3, 4



ELEANOR AGNES THORPE

"El"

Camera Club 4
Commercial Club



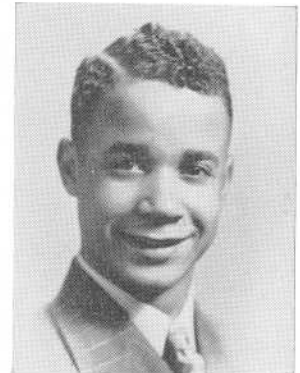
LOUISE MASON THURSTON



TEDDY TOKARZ

"Toke"

Basketball 2, 3, 4
Captain 4
Dance Committee 4
Football 2, 3, 4
Health Club 2
Varsity Club 3, 4



WILLIAM D. TOMPKINS

President of Class 2



JAMES TRAVASSOS

"Fat Larry"

Football 3, 4
Varsity Club 4



IRENE G. TURCOTTE

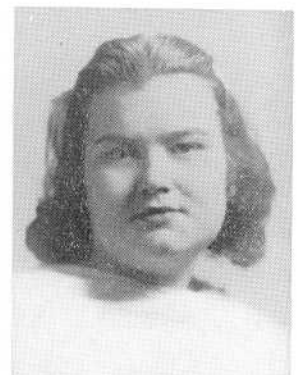
"Turc"

Commercial Club



ELEANOR LOUISE TURNER

"Duchess"



MARY LOUIS TYRRELL

Commercial Club



MERCEDES ROBINSON URBAN

"Merc"

Commercial Club



PHYLLIS JOANNE URBAN

"Phil"

Commercial Club



VERONICA C. URBAN

"Vera"

Commercial Club



MARY E. VASCONCELLOS

Commercial Club



BEATRICE E. VERVILLE

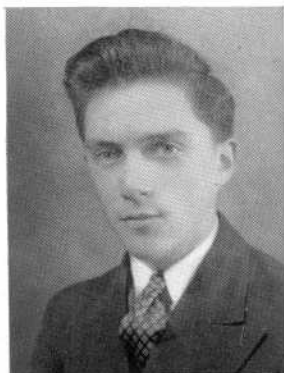
"Eye's" "Bea"

Commercial Club
Traffic Squad 1



MARY VICTORINE

Associate Editor Hilltop 4
National Honor Society 3, 4
Photographic Committee 4



ALBERT VIVEIROS

"Al"

ALFRED JOSEPH VOBORIL





HENRY S. WALKER

"Buck"

RUTH EVELYN WALKER

"Cookie"

Commercial Club
Gym Leader 3
Young Drivers Association 4



ALBERT EDWARD WALMSLEY

"Al"

Camera Club 4
Editor-in-Chief Record Book 4
Health Club 2
Office Aid 4
Photographic Committee
Young Drivers Association 4

DANIEL JOSEPH WALSH

"Prepper"

Commercial Club
Home Room Director 3, 4



DOROTHY ELIZABETH WALSH

"Dot"

Band 3, 4
Commercial Club
Gym Leader 3

ELIZABETH FRANCES WALSH

"Betty"

Basketball 4
Camera Club 4
Commercial Club
Dramatic Club 4
Gym Leader 4
Volleyball 2



JAMES J. WALSH

NORMA WAMBOLDT

"Bubbles"





JAYNE FLORENCE WARCHOL

"Topsy" "Inky II"

Camera Club 4
Cheerleader 4
Chorus 3
Commercial Club
Girls Numeral Club 2, 3
Gym Leader 4
Home Room Director 2, 4
Volleyball 2

JOSEPH WASSERSTEIN

"Joe"

Debating 4
Dramatic Club 3, 4
Forum, 1, 2, 3, 4
Home Room Director 1, 2
Orchestra 1, 2, 3

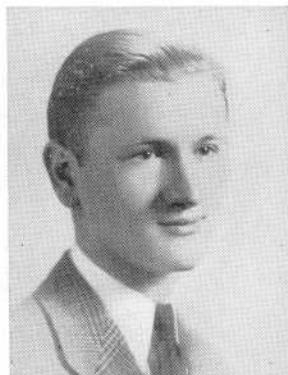


ISIS WATERMAN

RUTH H. WATERMAN

"Honey Belle"

Commercial Club
Gym Leader 3, 4



ALPHONSE J. WEGLOWSKI

"Al"

FRED F. WEGLOWSKI



LLOYD F. WESTELL

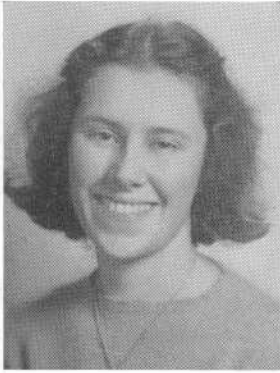
"Wes"

FRANCES ANN WHALON

"Fran" "Cinder"

Camera Club 4
Commercial Club President
Dramatic Club 3, 4
Financial Secretary 4
Home Room Director 3
Pin and Ring Committee





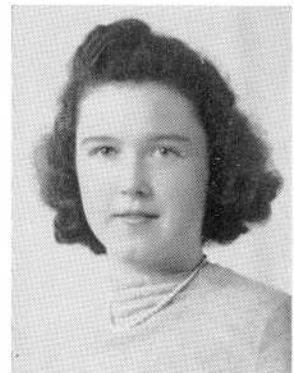
EDITH BARBARA WHISTON
"Dee"



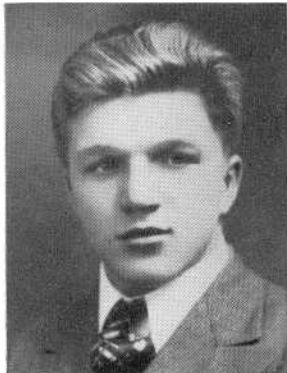
MARGARET WHITEHEAD
"Peg" "Tommy"



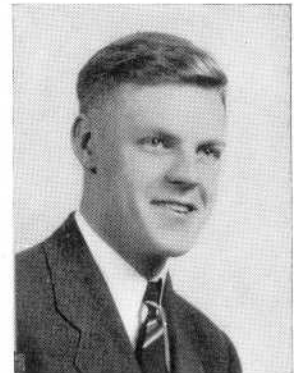
ROSE WHITMYER
"Shortie"
Commercial Club



HELEN THERESA WHITTY
Home Room Director 1, 2, 3



HENRY ANDREW WIKIERA
"Plow"



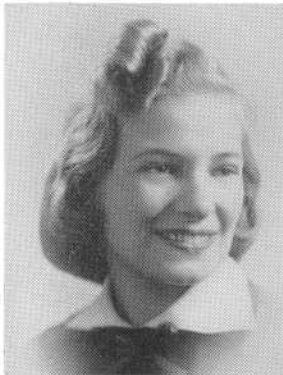
JOHN WILDING
"Red"



MARJORIE WILDING



EILEEN WILKINSON
"Wilky"
Commercial Club



ELEANOR M. WILKINSON

Band 2, 3, 4
Camera Club Secretary 4
Home Room Director 2
Literary Club 4
Orchestra 2

JAMES BRADBURY WILLIAMS

"Jimmy"

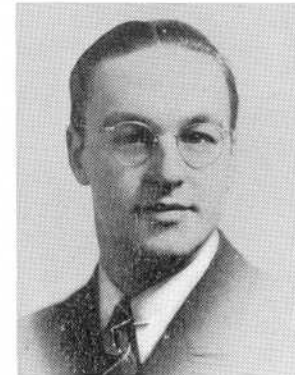
Commercial Club
Home Room Director 2, 3, 4
Young Drivers Association 4



ERNEST CLIFTON WILLIAMSON

"Ernie"

THOMAS WILLIAMSON



MARY ELIZABETH WILLISTON

"Lib" "Lizzy"

EDWARD WALTER WILSON

"Ed" "Sleepy"



MARGARET M. WINN

"Marg"

Commercial Club

GLADYS WINSTANLEY





JOSEPH FRANK WITKOWSKI

Commercial Club
Young Drivers Association 3



MARY FRANCES WOJTOWICZ

"Mae"

Gift Committee
Home Room Director 4



ANNA WOYTOWICH

Commercial Club



WILLIAM WOOD, JR.

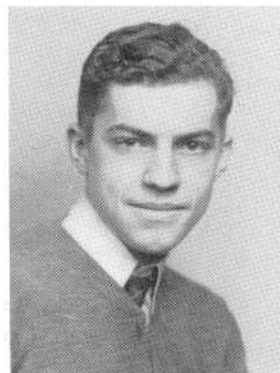
"Woody"

Band 2, 3, 4
Orchestra 2, 3, 4
Young Drivers Association 4



ISABELLA LETITIA YATES

Commercial Club



STANLEY J. ZMUDA

HERMINIA C. ANDRADE
ALBERT WILLIAM ASHTON
ARTHUR EDWARD ASHTON
REGINALD ZEPHIRIN BELLERIVE
ERNEST RAYMOND CAROSELLI
EVELYN GLADYS DASHOFF
SEVERO FEIJO
LYDIA FELIZBERTO
WILLIAM ANTHONY GASIOR
SAMUEL R. GLOVER, JR.
WALTER HORDERN
HENRY KATZ
JAMES DONALD KEILTY

JOHN FRANCIS MANCHESTER
JAMES WILLIAM McGUIRE
ARTHUR MELLO
WALTER JOHN MISKA
WILLIAM GEORGE OLIVER
EDWARD A. O'NEIL
RUTH MARY PATTEN
PETER PAUL PRUCHNIK
ANDRE V. RAYMOND
MARY LITTLEJOHN SMITH
JOHN LEO SOLTYA
WILLIAM P. WATERS
EDWARD STANLEY WLODKOWSKI



Grace Kay

Rita St. Amour

Rita Corgino

Lillian Glowacki

Jacqueline Hamel

Eileen Shea

Jayne Warchol

Frances Whalon

Muriel Burgess

Elizabeth Walsh

Marjorie Lafleur

Eva Furze

Lorraine Boisvert

Kathleen Dean

Louise Blake

Lucy Duffy

Barbara Jones

Marietta Belisle

Isabella Yates

Sally Stover

Mabel Perry

Most Popular

Best Looking

Most Attractive

Class Sport

Best Dancer

Class Flirt

Most Athletic

Most Agreeable

Best Dressed

Most Talkative

Most Dignified

Class Wit

Most Talented

Most Interesting

Most Studios

Best All-Around Student

Best Speaker

Class Giant

Class Midget

Most Brilliant

Most Mischievous

John Foley

Ralph Higgins

Austen Hentersbee

Leo Gaffney

Paul Hinchey

Fernand Lemay

Teddy Tokarz

Albert Moore

Charles Isherwood

Joseph Hanify

William Lawton

Edward Neylon

David Nadien

Edward Burke

Gerald Dunn

James Stott

Walter Milne

Samuel Glover

John Lewis

Joseph Wasserstein

Daniel Walsh



ACTIVITIES



LIBRARY AIDS SEPTEMBER 1938—JUNE 1939

The Library Aids have just completed another very successful year under the guidance of Marion E. Kernan, the librarian. It is the only organization in the school which is composed of students chosen from the senior, junior and sophomore classes, because of their scholastic standing, cooperation, dependability and general helpfulness. The officers for this year are Lucy E. Duffy, President; Joseph Shelley, Vice-president; Marion McPartland, Secretary; and Walter L. Milne, chairman of the entertainment committee.

Each morning before school three aids are on duty to distribute passes and a fourth aid is there to check returned books. Members are in the library every period to match passes, distribute them to study halls, locate absent pupils and are often called upon by teachers for other tasks. Each aid must keep one of the library sections in order according to the Dewey Decimal System. All sophomore pupils are assigned to regular Library Science Classes held in the school library. Aids assist here in checking and distributing material.

Each month dues are collected to defray expense of our share in the record book, Christmas decorations and a party. This year we went to Boston April 15th and visited the Mapparium, Boston Public Library and after luncheon attended a Bernard Shaw comedy at the Tremont Theatre.

During the year our students and faculty were grateful for the 1936 graduation gift—a fine magazine rack, an essential part of library equipment.

The complete Library Aid List for September 1938 to June 1939 is as follows:

Allan F. Belden, Doris Burfeind, Ann Burns, Peggy K. Chytilo, Thomas Collius, Paulino Crapo, Joseph D'Adamo, Kathleen Dean, Lucien Dion, Lucy Duffy, Grace Eales, Evelyn Ellison, Camella Fazzina, John Foley, Malcolm R. Gifford, Ruth Harrison, Ralph Higgins, Barbara Jones, Anna T. Kapitan, Grace D. Kay, Gertrude LeDoux, Marie C. LeDoux, Marion McPartland, Walter L. Milne, Geraldine Mitchell, Lorraine Pacheco, Warren Prebluda, Joseph Shelley, Jacob Twersky, Sally P. Stover, Adele B. Smith, Nena Kondos, Natalie Gourse, Bertrand St. Laurent, Ruth Richardson, Mauriel M. Schultz, Edward S. Burke.





STUDENTS ACTIVITIES ASSOCIATION

President
JOHN FOLEY

Secretary
MOLLY FRIEDMAN

Ruth Harrison
Sally Stover
Russell Kneen
Thomas Patten
America Almeida

Vice-President
SUSAN WHALON

Edith Berman
Ruth Riley
William Carroll
Gladys Yates

Since its organization in 1922, the S. A. A. has endeavored to centralize the extra-curricular affairs of the school. This year, under the faculty direction of Miss Alice G. Langford, Miss Anne O'Neil and Mr. James E. Conlin, and with a student enrollment of 2,000, the council has further tried to strengthen the scholastic, social, and athletic interests of the students.

It has published the Principal's and All-A Lists at the close of each term, distributed the "Guide for New Students" to the Sophomore class, cared for the Bronze Honor Plaque, arranged for "pep" assemblies, and awarded Deltas and certificates to office-holders.

It has conducted three matinee socials and the "Pigskin Hop", and sponsored a banquet for the football team and the annual Officers' Banquet at which State's Attorney-General Paul A. Dever was guest speaker.

The council has represented the school at the Southeastern Conventions in Sharon and Whitman, the State Convention in Springfield, and the National Convention in New York.

It has cooperated in every way with the faculty and principal in its endeavor to maintain the high standards of the school.



HOME ROOM DIRECTORS

President

RUSSELL KNEEN

Vice-President and Secretary

BERNICE JONES

The Home Room Directors' organization, a large and important group, consists of one boy and one girl from each home room in the school. These members must attain a scholastic standard set by the office and should possess qualities of leadership and enthusiasm to arouse the interest of the students in drives and campaigns. The latter includes membership in the S. A. A., sale of anti-tuberculosis bangles, "stay-off-the-lawn" movement, and assistance in filling and distributing Thanksgiving baskets. Their duties in home rooms give them practice in checking attendance, reading daily notices, counting ballots and being generally cooperative.

Emblematic of its importance is the fact that its president is granted a seat on the S. A. A. Council, the governing body in student extra-curricular affairs.

This year the group has been most efficient and willing in all the activities imposed upon it. A splendid spirit has existed among the members of the organization.



DURFEE DRAMATIC CLUB 1938-39

The meeting will please come to order. The secretary will now read the activities of the Durfee Dramatic Club for the year 1938-39.

Each regular weekly meeting was called to order by President D'Adamo on Tuesday at 2 p. m. in the Technical Auditorium after the Call Boy, Leonard Freedman, had admitted the members. New Juniors and Seniors were accepted for membership by tryout during the hurricane. They increased the club membership to 100.

A Hallowe'en costume party cleverly arranged by Estelle Sussman, Mistress of Revels, followed by a roller skating party in the winter, gave the members opportunities to become friends.

A matinee presentation of *Orace, His Conscience*, and *The Peterkins* admitted new members to the National Thespians, the Dramatic Club's honorary society.

The Christmas plays, *Grandma Pulls the Strings*, *Where the Cross is Made*, and *The Pierrot of the Minute*, double cast, gave many members opportunities for acting. These plays were repeated at various churches throughout the city.

Novelty Nite provided the chance for every member to offer his talents to the cause of good entertainment, making it one of the most successful in years.

The club is proud to have been connected with the operetta *Patience*, for which it arranged costumes, scenery and action.

Respectfully submitted

Avis Radovsky, Secretary

President—I declare this report accepted as read. Any new business to come before the meeting?

Chuck—Mr. President—I propose that we invite the high schools of Massachusetts to hold their Drama Festival here at Durfee this year, and give them a good time.

Second the motion.

Any discussion?

Can we afford it?

Have we enough scenery?

Would we have to feed them?

Who gets the gate?

I think it's a swell idea.

Those in favor so vote. Those opposed. Motion is carried, and you have voted to hold the Massachusetts Drama Festival here April 1.

No fooling!



.. GRANDMA PULLS THE STRINGS ..



.. THE PIERROT OF THE MINUTE ..



.. THESPIAN INITIATION ..



.. WHERE THE CROSS IS MADE ..



FORUM

President
WARREN S. PREBLUDA

Vice-President
RAYMOND ROBINSON

Secretary
PEGGY CHÝTILO

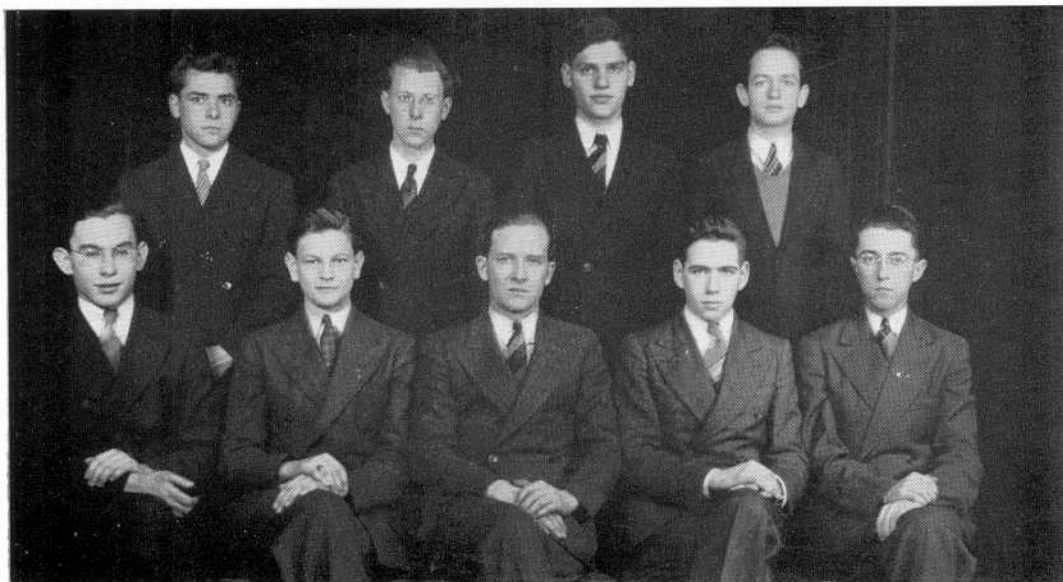
During the past year, the Durfee Forum has been actively engaged in intramural and interscholastic speech work; its purpose being the fostering and maintainance of an interest in forensic activity among the student body at Durfee.

Drawing members from all classes and types of students, it has trained them in the various fields of speech activity. Through interesting programs, such as debates, discussions of current affairs, mock trials and oratorical contests, the members were able to demonstrate their forensic ability.

Many of the students, whose talents were worthy of merit were awarded positions on the Durfee Varsity Debate Team, as well as membership in the local chapter of the National Forensic League, which two groups, the Forum sponsors. The members have attended various contests conducted by the National Forensic League and have rated high in the final results.

However, this program has had its lighter side, with the group conducting several social affairs, including a Christmas social and the annual banquet, held towards the end of the school year.

Through the untiring efforts of Mr. William Kaylor, faculty advisor and debate coach, the group has succeeded in acquiring the fundamentals of effective public speaking and debating.



DEBATING

At the beginning of the debating season, prospects for another championship debating team were anything but bright. With but one experienced speaker returning, untried material had to be molded into a smooth speaking unit. The difficulties encountered were apparent in the loss of the first two debates to Hyannis. Realizing their weaknesses, the affirmative team of Albert Resnick and Bayless Manning and the negative team of William Wood and Ralph Kolodny determined to improve their work a hundred fold. Their rewarded effort came in the form of the championship of the district National Forensic League Contest held at Hyannis in February. The point total scored by the debaters plus that of the speakers was sufficient to win the tournament championship as well.

The loss of a two to one decision to the New Bedford negative provided the stimulus to develop near perfection of debate technique. Durfee's superiority was clearly shown in the Massachusetts National Forensic League Tournament held at Groton in the latter part of March. The team won nine victories and lost but one. With the state championship secure, the debaters contributed sufficient points to the various speakers' totals to win the tournament as well.

Although barred from debate in the New England N. F. L. tournament, the speakers annexed championships in oratorical declamation, original oratory, and extempore speaking, three second place winners as well as third and fourth place winners. The point total amassed by the speakers outstripped all other schools, and Durfee won the tournament for the second consecutive year. The season closed with a debate against the Bates College Freshmen.



THE DURFEE LITERARY CLUB

OFFICERS

President

ROBERT SOKOLL

Secretary

NATALIE GOURSE

Vice-President

EDWARD S. BURKE

Faculty Advisor

MR. AMBROSE F. KEELEY

In 1934 a small group of students conceived the idea of organizing a club for all those interested in creative writing. This group chose for its name the Durfee Literary Club, and for its faculty advisor Mr. Ambrose F. Keeley. During these five years many varied and entertaining manuscripts have been submitted and are now kept on file in Room 11-A.

The main purposes of the club are to bring together those students interested in developing their skill in literary style, and to aid them in achieving a capacity for intelligent criticism.

The club has enjoyed a successful year, its meetings being featured by numerous interesting contributions, both in prose and in verse.



COMMERCIAL CLUB

OFFICERS

President

FRANCES WHALON

Vice President

JOSEPH BOLGER

Secretary

IRENE GAGNON

Treasurer

EILEEN FRAIN

The Commercial Club is one of the largest clubs in the B. M. C. Durfee High School having a membership of 285 seniors.

The purpose of the club is to arouse the interest of Commercial Students in business, social and charitable activities.

During the past year talks were given by various business men and women who stressed the importance of business ethics and informed the members what the business man expects of commercial students when they enter the business field.

The acquaintance party, commercial hop and the roller skating party provided a fine opportunity for members to become better acquainted and many lasting friendships were formed.

The charitable work of the club was in the form of baskets of food which were distributed to needy families at Christmas time.

Due to the cooperation of club members, the conscientiousness of the officers and the untiring efforts of our Club Advisor, Miss Isabelle E. O'Neil, the club passed a very successful year.

ORCHESTRA AND CHORUS

Under the leadership of Miss Helen L. Ladd, the Durfee orchestra of 65 pieces and the Durfee Chorus of 90 voices carried out a program of interest and importance to the city as well as the school.

Following the policy of the last few years, the chorus went through the corridors of both buildings singing Christmas Carols on the last school day before Christmas. The Chorus was invited to sing these Carols at the Rotary Club and the next night they sang at the City Hall.

In February the Chorus and Orchestra combined and presented the annual Gilbert and Sullivan Operetta. There were two casts that presented the operetta *Patience* and both were enjoyed by the splendid audience.

In March, twelve choristers and seven members of the orchestra went to Boston to sing and play at the New England Music Festival Concert which was held in Symphony Hall. Durfee students won high ratings in both chorus and orchestra.

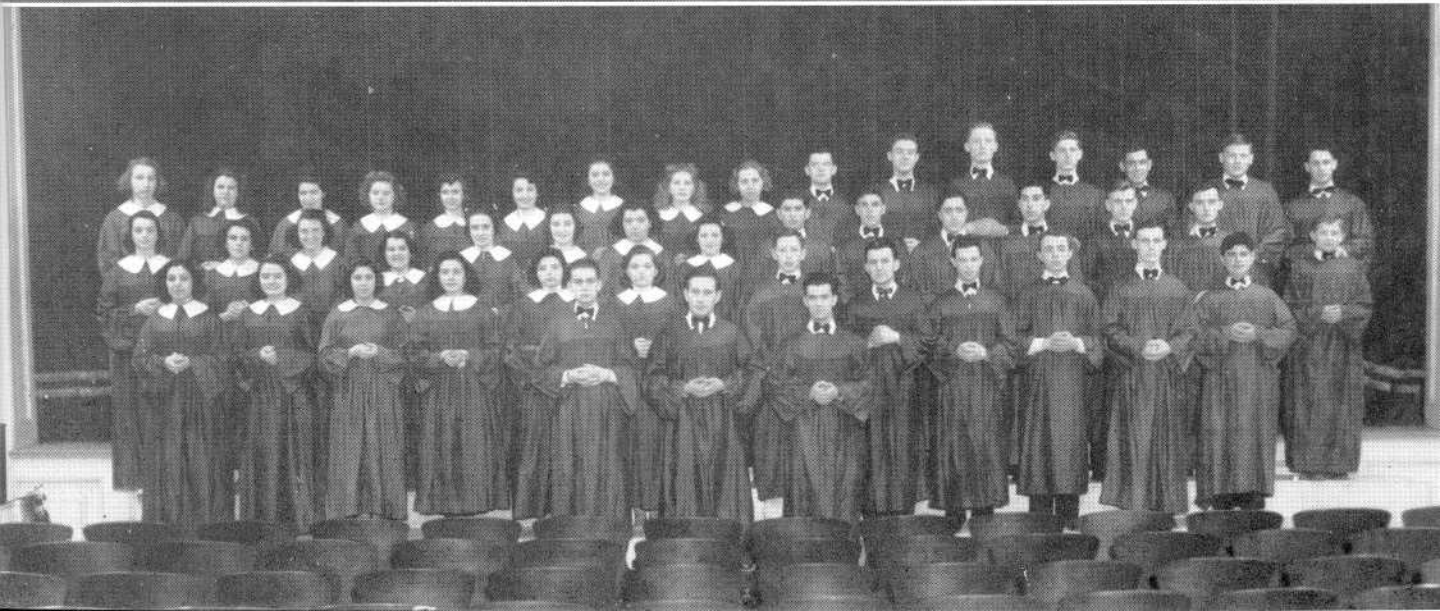
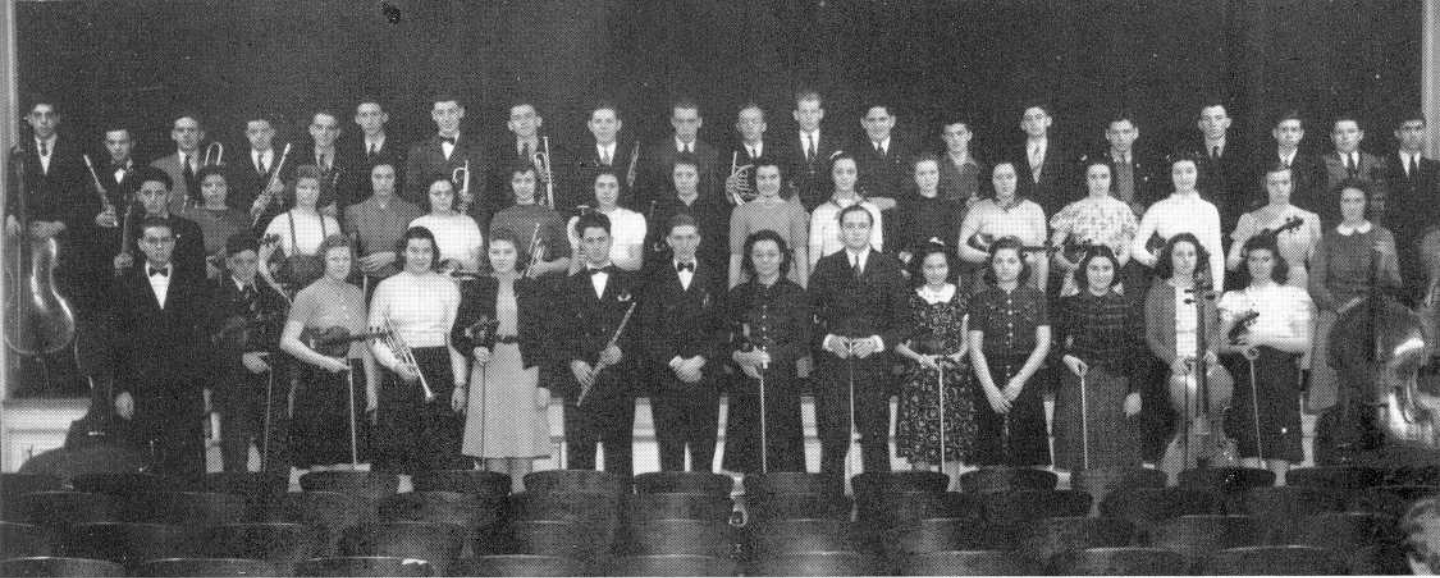
The orchestra entertained at the Dramatic Club's three one-act plays and at the Massachusetts Drama Festival held by the Dramatic Club.

In April the annual concert was presented by the orchestra and chorus. Soloists from both groups were enjoyed as well as the groups themselves.

The State Music Festival which was held in Fall River last year was held in Belmont during the month of May. The orchestra and chorus attended and received a high rating from the judges.

Graduation would not be complete without the orchestra. The orchestra will play at Class Day, Founder's Day and Commencement Exercises. It adds that certain thing that seems to make a program mean something to a graduate.

The orchestra and chorus have helped the school and have been a source of pride to the city of Fall River.





THE NATIONAL HONOR SOCIETY

President

SALLY STOVER

Vice-President

NANCY BELLEFEUILLE

Secretary

KATHLEEN DEAN

Mu Kappa Delta Chapter of the National Honor Society has now been established in Durfee for two full years. Its object is to create an enthusiasm for scholarship, to stimulate a desire to render service, and to encourage the development of character in the students of B. M. C. Durfee High School. Various duties which are undertaken by other chapters in the country were already ably carried out by Durfee's S. A. A. council and the Traffic Squad, when the chapter was formed. It was then decided that the society should be purely honorary in scope.

Membership in the society is based on Scholarship, Service, Leadership and Character. The entire faculty judges the qualifications of the candidates, and the society admits about twenty-five members of the Junior class and fifty members of the Senior class each year. Impressive induction ceremonies are held in May following the elections. These exercises stress the four main points — Scholarship, Service, Leadership and Character.



THE DURFEE HILLTOP

Editor-in-Chief

WILLIAM N. LAWTON

Business Manager

Natalie Horton

News Editor

Warren S. Prebluda

Associate Editors

Grace D. Kay

Mary Victorine

The Durfee Hilltop, a weekly student newspaper issued under the direction of John T. Crowley, faculty advisor, and William N. Lawton, editor-in-chief, is now concluding its sixteenth year of service to Durfee.

During these years it has always followed its policy of giving students a fair and accurate resume of school news while at the same time promoting school activities.

News gathering is managed jointly by the editor-in-chief and Warren Prebuda, news editor, assisted by Grace Kay and Mary Victorine, associate editors, George Gollub and Fernand Lemay. The sports page is written by a staff composed of Francis Bennett, Edward Duffy and Milton Stone.

Features are arranged by Kathleen Dean, author of the column, "As I See It". "Seen Around School" an interesting column of personal notes is written by Anta Dumas, Ruth Harrison and Pauline Crapo. Avis Radovsky is the humor editor.

The Hilltop exchanges with many high school and college journals from which interesting items are compiled for a weekly column by Margaret Hayes and Rhea Roach.

The business manager, holder of a Delta office, is Natalie Horton. Circulation is managed by Esther Levine, Gladys Mycock, Eileen O'Neil and Mary Silva.



DURFEE CAMERA CLUB

President

CARLYLE HURWITZ

Vice-President

JOSEPH HANIFY

Secretary

ELEANOR WILKINSON

Treasurer

WILLIAM HARPER

The Durfee Camera Club was organized last year to fill the need of an organization wherein beginners in photography might learn its essentials, and more advanced students its intricacies.

Mr. Lawlor was chosen as faculty advisor.

Prominent local photographers have spoken and given demonstrations at several meetings.

A complete dark room has been outfitted for the use of the members of the organization.

Although new, the club has run a dance and a print competition, both highly successful.



YOUNG DRIVERS ASSOCIATION

Faculty Advisor, Mr. John V. Donnelly *Sergeant-at-Arms*, Charles Isherwood
Vice-President, J. Roger Sisson *Secretary*, Ruth Cox *President*, Merton Berman

The Young Drivers Association which originated in February 1938, started its first full scholastic year in the first week of November under the leadership of the following officers: Merton Berman, President; J. Roger Sisson, Vice-President; Ruth Cox Secretary; and Charles Isherwood, Sergeant at arms. Mr. John V. Donnelly, who was appointed faculty advisor when the organization started, continued in the same capacity.

The purpose of the organization is to promote safe driving. In carrying out this purpose the Y. D. A. has sponsored two worth-while projects during the year. At the beginning of 1939, safety essay and poster contests were conducted in the public schools of the city by the club in cooperation with James N. Buffington. During the months of February and March the Y. D. A. sponsored a class of prospective drivers who were instructed in the theory of proper driving and Massachusetts Automobile Laws by Mr. Earl Lewis of the Massachusetts Registry of Motor Vehicles.

The Young Drivers Association looks back upon a successful year and hopes that the future will see the organization grow and improve.



TRAFFIC SQUAD

The Traffic Squad, which was the first of the student-government organizations in this school, has been in existence over fifteen years. It was under a faculty committee, consisting of Principal Moulton, Mr. Townsend, Mr. Small and Miss Macdonald. The officers conducted a student court to settle violations of rules. Later Mr. Giduz was chairman of the faculty committee and after the destruction of the old Technical building Miss Miles was put in complete charge of a reorganized Traffic Squad.

The officers are two captains, four first lieutenants, four second lieutenants and a secretary, all appointed by the faculty advisor.

For several years we have had the one-way system of traffic on stairways, a system much opposed by a few when first instituted, but now generally accepted as a necessity.

We have also continued our work of several years past in keeping the corridors as quiet as possible during lunch periods. This year that work has included watching for unlocked bicycles.

Five or six years ago Mr. Carroll obtained permission from the Police Department to have "No Passing" signs on Rock Street to prevent automobiles using the block between Locust and Cherry Streets during the time pupils are passing from one building to the other. Ever since, traffic officers have carried these signs out at each passing period.

About a year ago the Young Drivers Association obtained permission to have these signs out for thirty minutes before and twenty minutes after school and during the whole lunch hour. By Mr. Carroll's request this additional work has been supervised and carried out by the Traffic Squad.

The officers in the above picture constitute the group who were in charge of the entire Squad for the year 1938-1939.



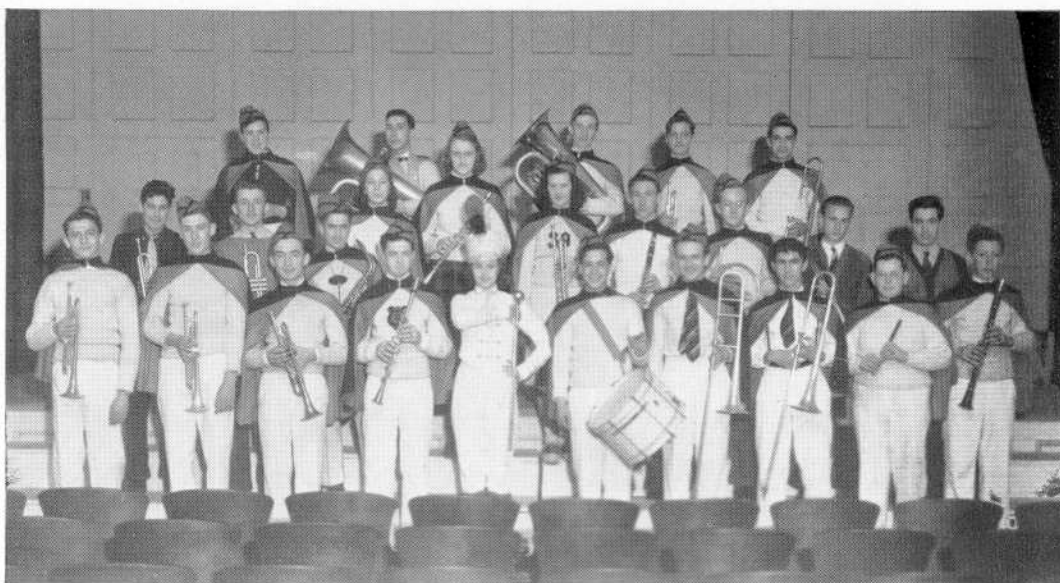
SANCO GUIDES

The Sanco Guides are volunteer upper-class leaders, who, without any promise of reward, have given their services in the cafeteria to promote orderliness and sanitation.

These Guides, who were members of the Sanco Club during their Sophomore year, are exemplifying their earlier training by giving valuable guidance to others during their senior year.

They acquaint the pupils with the rules of the cafeteria and urge them to cooperate. After a little prompting most of the pupils remember to be seated at tables, to use trays for their lunches, to put their books on the shelves under the chairs, to replace their chairs at the tables when they are through lunch, to separate the silverware from the dishes when returning their trays, and to refrain from carrying candy or food outside the cafeteria.

Through the cooperation of the students and faculty supervisors, Miss Sylvia W. Seagrave and Mr. George A. Mitchie, a great improvement has been achieved, and the school dining room has been made a pleasant place for all.



DURFEE BAND

President

EDWARD PIENIADZ

Band Mistress

MARILYN CLOUTIER

Secretary

GENE GANCARZ

Treasurer

ROBERT BAKER

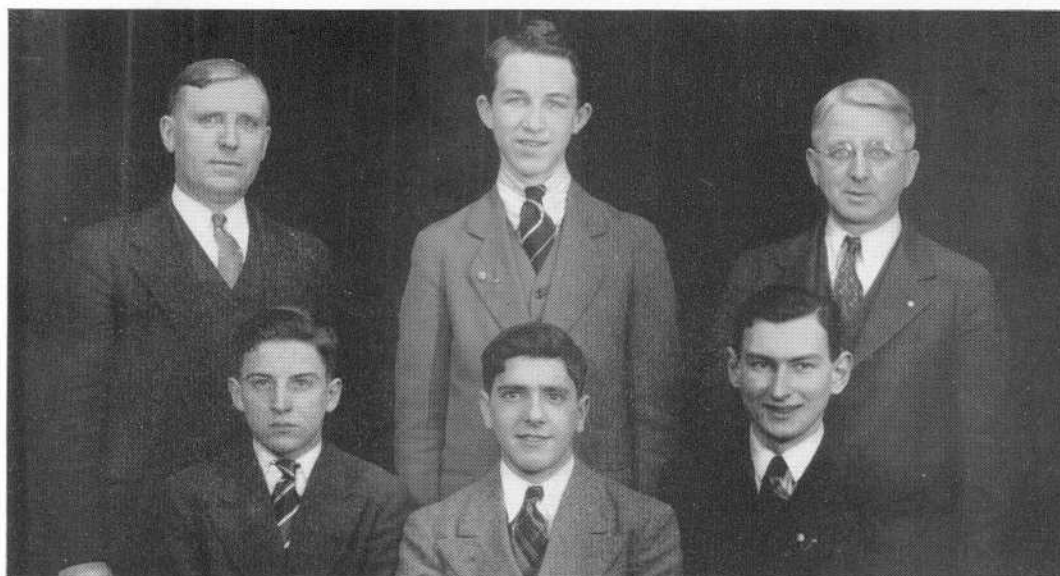
Custodian

WILLIAM ORMEROD

The B. M. C. Durfee High School Band, which this year has a membership of fifty student musicians, is one of the largest in several years. Its instructor, advisor and conductor is Mr. William Allinson. In addition to musical instruction, the band is also trained in letter formation and precision marching by Mr. Ambrose F. Keeley. For the past three years Miss Marilyn Cloutier has been the band's drum major.

The purpose of the band is to help create school spirit at football games, rallies and other social events. It also promotes and gives aid in developing instrumental and musical interest at school. This year the band has played at all the football games, all the rallies and at the Varsity Show. It also has taken part in out-of-school events, such as the Armistice and the Memorial Day parades.

Last year the Durfee Band had great pleasure in being host to the Massachusetts Music Festival, at which twenty-seven bands, twenty orchestras, and thirty-five choruses took part. In the competitive musical selections the band was praised for its musical ability.



ELECTRICAL CLUB

Standing—Mr. Henry J. Shea,
Faculty Advisor
James L. Connors,
Vice-President
Mr. Myron T. Ashley,
Faculty Advisor

Seated—Thomas Hickey, Treasurer
George Faria, President
Alexander Levine, Secretary

The B. M. C. Durfee High School Electrical Club, under the able guidance of President George Faria assisted by Mr. Myron T. Ashley and Mr. Henry J. Shea in the capacity of faculty advisors, has had a very successful year.

The Electrical Club, since its organization in 1931, is one of the many extra curricular activities at this school that has had its constitution sanctioned by the S. A. A.

The aim of this club is to create a greater interest in electricity, to take up work and conduct experiments that are impossible in class because of lack of time, and to promote greater cooperation between members of the club and men in the electrical field.

The Electrical Club meets every other Wednesday after school hours. The program usually consists of club business followed by a talk by a guest or a visit to some place of interest. The Montaup Electric Company, The New England Telephone and Telegraph Company, and factories making electrical supplies, either local or in nearby cities, are a few places which the club has visited.

Through this program the members of this organization see in operation those principles which they study in the classroom. Becoming acquainted with electricity in this manner enables the student to understand and appreciate the importance of electricity.

OFFICE AIDS

The organization of Office Aids, as approved by the S. A. A., is formed to serve a two-fold purpose:

- (a) To improve the service rendered to the office by student aids.
- (b) To give recognition to those students who serve in the capacity of office aids.

The membership consists of Durfee students selected by either Vice-Principal for duty in either the Durfee or the Technical office.

In order to be eligible for membership in this organization a student must receive 70% or higher in all four or five period subjects and no failures.

The officers are President, Vice-President and Secretary elected by two-thirds of the active membership.

The president must be a Senior; the vice-president, a Junior; and the secretary, a Sophomore.

In the president organization there are ten Seniors, seven Juniors and ten Sophomores.

The meetings are held regularly once a month.

This organization has been functioning for the past two years and is performing efficient messenger service in a dignified and business like manner.

The students chosen are boys of character who have a clear understanding of their sense of duty.

The Senior Office Aids are as follows:

Edgar A. Broughton, Charles F. Dutton, George J. Gollub, William E. Harper, Thomas F. Higgins, Henry J. Kitchen, Lurger J. Pelletier, Jr., Bertrand W. St. Laurent, Milton M. Stone, Albert E. Walmsley.



ATHLETICS



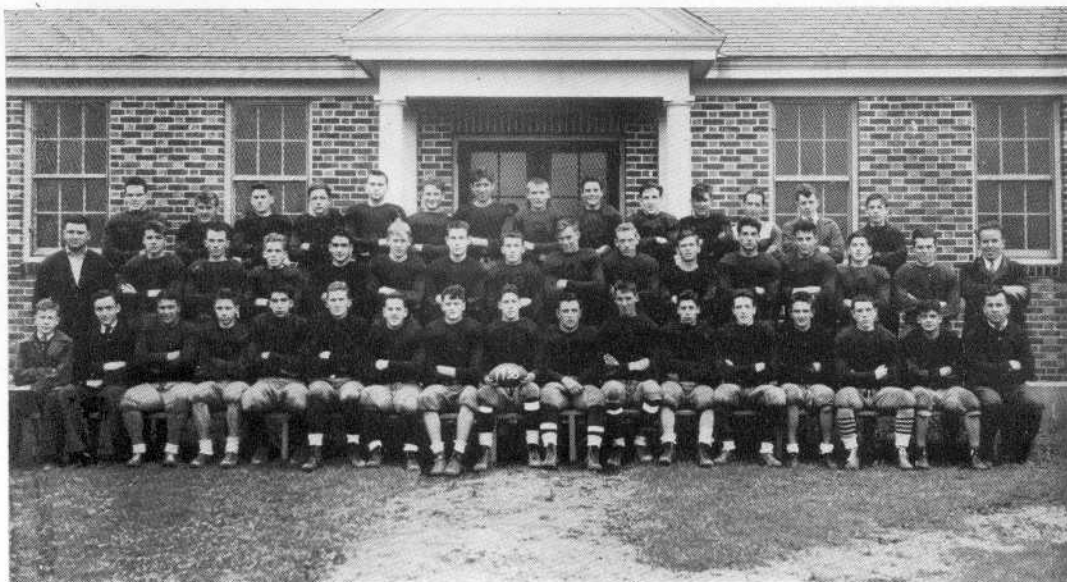


CHEERLEADERS

Cheerleaders are chosen each year to lead the student body's cheers at the football games, by Miss Mary F. McCarthy and Mr. Ambrose F. Keeley. From the appointed cheerleaders, one who has been a leader for two years is chosen as Head Cheerleader. Her duty is to instruct the girls and to lead them as they perform their gymnastics. There are no scholastic qualifications. Practice is held every Friday during the season.

This year's cheerleaders were present at every out-of-town and home game, and performed at many of our "pep rallies". For their faithful work, insignias were awarded to the following: Seniors—Head Cheerleader Lillian Glowacki, Jayne Warchol, and Patricia Ellis; Juniors—Norma Cleaves, Mary Martin, and Margaret Stinziano.

Many thanks are due to Miss Mary F. McCarthy faculty advisor, who devoted much time in helping the girls to succeed.



FOOTBALL

The high spot of a fairly successful season was a 7-0 victory over undefeated Fairhaven, a win that marked the first setback ever suffered by a Fairhaven grid eleven at home since Coach Sezak took charge.

Four wins, three losses, and two scoreless ties were the fruits of the season which was capped by the selection of Charley Carey, Ted Tokarz, Captain Eugene McCarthy, and Harold Sayward on the "all county" teams.

After a scoreless-tie opener with Worcester South, came three straight wins: Attleboro 7-6, Fairhaven 7-0, and New Bedford Vocational 14-0.

North Attleboro jolted Durfee hopes for an unbeaten season with a 13-6 victory, but the Hilltoppers came right back to whip Taunton 7-0. Durfee was then held to a scoreless tie by Worcester Classical.

Over-confidence and injuries to key players left Durfee an easy victim for a plucky Coyle eleven which ran up a 13-0 count over the Red and Black.

New Bedford, with one of its best teams in years, had a real battle before pushing over a fourth-quarter touchdown that provided the 6-0 margin of victory. The Red and Black launched an early drive that pushed the Whalers down within the shadow of their goalposts, but the attack petered out, and the Crimson continued its winning ways over Durfee in the annual Turkey Day Classic.

Senior lettermen who carried the Durfee grid colors were Captain Eugene McCarthy, Ted Tokarz, Robert Fields, Robert Hart, Dwello Pieri, Edward Machado, James Travassos, Leo Gaffney, Manager Ludger Pelletier, Edward O'Connell, Ralph Allen.

Much credit is due Coach Stephen Nawrocki, through whose zeal a winning season was made possible.



BASKETBALL

Beaten only twice in twelve games and those defeats at the hands of a potent New Bedford five that was an M. I. T. Tourney finalist—that was the record of the '38-'39 Durfee quintet, one of the best teams Coach Stephen Nawrocki has ever assembled.

Led by Co-captains Edward (Red) Hartnett and Ted Tokarz, the Hilltoppers swept through all County opposition but New Bedford, even shattering an old Red and Black jinx by swamping Fairhaven High's hoop forces in the Blue's "band-box" gymnasium.

Coach Nawrocki had for a first team, an all-Senior outfit with Armand Lavallee and Ted Tokarz forwards, Ed Harnett, center, and Ed Neylon with Al Moore at the guard positions.

The Hilltoppers opened with New Bedford in Whaletown and lost a close decision; then came a long string of wins with the following clubs dropping a home and home series to the fast-travelling Durfee five: Fairhaven, Vocational, Coyle, Taunton and Dartmouth.

For the season finale, the Red and Black played host to New Bedford before a capacity throng that jammed every vantage point of the Boys' Club. With an M. I. T. tournament bid at stake, the game was a hectic fray, but the Whalers working methodically and with cool team-work broke Durfee's string of ten straight wins, and earned the right to become M. I. T. tourney entrants.

Senior members of the team beside the first team mentioned were Russell Kneen, Manager Leo Gaffney, and Eugene McCarthy.



BASEBALL

This record book goes to press before the completion of the 1939 baseball season. However, Coach Joseph R. Hathaway, under whose capable and enthusiastic guidance Durfee won the Bristol County championship in 1938, claims that the present aggregation will be a strong contender in the newly formed Southeastern Baseball League.

The 1939 season was started with a 5-1 win over Fairhaven and was followed by a 7-6 victory over Taunton.

The regular team lined up as follows; Paradise c., Smith, Ouellette, Stott, Fidalgo, p., Carey 1b., Martin 2b., Ryan ss., Machado 3b., Gosciminski lf., McCarthy cf., Arkison, Varnese, Kret rf.

The seniors on the team are Captain "Tommy" Ryan, "Eddie" Machado, "Ed" Gosciminski, "Joe" Martin, "Jim" Stott, "Jim" Arkison. Allan Belden is the student manager.

Other members of the squad are J. Carey, W. Condon, W. Eaton, L. Patten, W. Cripps, A. Rooney, R. Harmon, R. Ryan, H. Murphy, S. Lipshitz. Many of this latter group will play an important part in the drive for interscholastic honors.

Captain "Tommy" Ryan and "Ed" Gosciminski, seniors, and "Charley" Carey, a junior look like candidates for Bristol County honors.

TENNIS TEAM

The Durfee Tennis Team of 1938 completed an impressive season with a total of twelve wins and two losses, the Rhode Island state championship De La Salle Academy team with Junior Davis Cup player Don Martin being the only squad to evidence any superiority. An examination of the records shows that two members of the Class of 1939 were largely responsible for much of Durfee's success on the courts. One of the two, Paul Thomas Hinchey, was elected captain at the close of the season and at the time this book goes to press is leading his 1939 squad in an effort to surpass last year's accomplishments. The other, Russell Kneen, is equally enthusiastic and hopes at least to duplicate his splendid performance of last year in both singles and doubles. The only other member of the Class of 1939 chosen for the tennis squad this year is Alan Lubinsky, who will be representing the school on the clay surface for the first time. Other members of the squad have been chosen from the large number of sophomore and junior candidates who reported to Coach Ambrose F. Keeley in April.

This year's team is scheduled to play at least twelve matches. Contests on a home and home basis have already been arranged with Bristol High, New Bedford High, Fairhaven High, De La Salle Academy, Attleboro High, and New Bedford Textile. There is every indication that whether or not Durfee manages to emerge victor in most of the matches the visitor to the Alumni Field courts or the avid follower of the team on its out of town trips will see plenty of good tennis.

TRACK

The track team, coached by Mr. Andrew Duffy of the faculty had a schedule of four track meets, two interclass meets and two outside meets one with New Bedford and one with New Bedford Vocational. In the interclass meets the Seniors had the stronger team with the Sophomores a close second. The running events this year were the one hundred yard and the two hundred twenty yard dashes, four hundred forty yards and eight hundred and eighty yard runs. The field events were the high jump, pole vault, broad jump, discus, shot put and the javelin throw.

Outstanding among the Seniors were Manager George A. Dawson, Fernand Lemay, Harry Copley, Sheldon Davis, Norman Paradis, William Riegel, William Waters and Thomas Duffy.

VARSITY CLUB

The Durfee Varsity Club has completed its ninth successful year, under the direction of Mr. Stephen Nawrocki.

This club was organized to stimulate good sportsmanship and to create a closer union between fellow athletes.

It has a present enrollment of 35 members. Membership is limited to students who have earned a varsity "D" in some sport—football, basketball, baseball, tennis or track.

During the past few years many social events have been sponsored such as dances and athletic exhibitions. This year the major event was Sports Night, featuring boxing and wrestling by our students. This proved to be very popular and the show was a great success financially and socially.

It is a recognized fact that this club has succeeded in its every attempt, and through the help of the students it has become a valuable part of school life.

Autographs



AFTER HIGH SCHOOL?

THE ALLEN SCHOOL PRESENTS THESE ADVANTAGES FOR YOUR
CONSIDERATION:

- Direct road to a definite goal in business. Our intensive business training supplements high school education.
- Minimum time required for preparation, because only essential business subjects are included in the courses.
- Considerable saving of time and money, because of the shorter time required.
- Smaller school permits more individual and personal attention; therefore, advancement is rapid.
- College grade student body.
- Business environment, with modern office equipment and a business-like atmosphere.
- Placement service without charge to employer or employee.
- Day and evening divisions. Fall term begins Tuesday, September 6.

THE F. G. ALLEN SCHOOL

of Business Administration and Secretarial Training

GRANITE BLOCK

FALL RIVER, MASSACHUSETTS

Compliments of

VIVI SOCIETY

Compliments of

AMICI

Compliments of

FIDAMUS SOCIETY



BOWENVILLE COAL CO.

10 Third Street Telephone 4023-193

SUFFOLK UNIVERSITY
CULTURAL AND PRE-PROFESSIONAL

COLLEGE OF LIBERAL ARTS—day, evening and part-time courses leading to A. B., B.S. and B.S. in Ed. degrees (120 semester hours.) Pre-professional courses (60 hours) for Law, Journalism and Business Administration. Entrance requirements, 15 college entrance units. Advanced standing for acceptable college credits.

PROFESSIONAL

LAW SCHOOL—4-year day and evening course. LL.B. degree, prepares for bar examinations and Law practice. Entrance requirement, 60 semester hours of college credits.

COLLEGE OF JOURNALISM—day and evening courses, B.S. in J. degree, 120 semester hours (including 60 semester hours of Liberal Arts and instruction in all phases of Journalism).

COLLEGE OF BUSINESS ADMINISTRATION—day and evening courses, B.S. in B.A. degree, 120 semester hours (including 60 semester hours of Liberal Arts) accounting, advertising, business management.

GRADUATE SCHOOL OF LAW—1-year evening course for LL.M. degree and higher professional standing. For LL.B. graduates only.

Late-Afternoon and Saturday Courses for Teachers

Special Summer School Courses

Day and evening duplicate sessions.

All departments co-educational

Combined faculties represent cultural and professional instruction of high quality and recognized achievement

Call, write or phone CAP. 0555 for catalogs

COLLEGES

LAW SCHOOLS

SUFFOLK UNIVERSITY REGISTRAR

DERNE STREET

BOSTON, MASS.

BEACON HILL

SPEED ACCELERATED!

Today's Electric Range, like the automobile, has been accelerated to meet present-day requirements. Today's automobile has stream lines for wind resistance. The modern Electric Range has high-speed units and automatic control for drudgery resistance. It is the modern woman's demand for more speed in her kitchen.

FALL RIVER ELECTRIC LIGHT CO.

85 North



Main St.

1939 CLASS RINGS

Supplied by

BARNES BROS.

Jewelers

377 So. Main St.

Tel. 4693

Compliments of

CHACE'S FLOWER SHOP

235 Stafford Road

Tel. 5066

Best Wishes from the
Photographic Department

WALTER C. FRAZE CO.

North Main Street

Compliments of

W. ARTHUR LEARY D. D. S.

THE HEALTH SHOPPE

NATURAL FOOD PRODUCTS

171 No. Main St.

Tel. 7130

Compliments of

THE NOBBY MEN'S SHOP

KIM LUN RESTAURANT

Boston Style Cooking Our Specialty
Chinese and American Dishes

101 No. Main St.

Tel. 9030

opp. Public Library

Fall River, Mass.

NONPAREIL
CONFECTIONERY

ICE CREAM - TEA ROOM

135 So. Main St.

1200 Pleasant St.

HUTCHINSON'S ART SHOP

PICTURES - PICTURE FRAMING

Artists' Supplies - Diplomas Framed

154 Second Street

Best Wishes

EMPIRE MEN'S SHOP

Compliments of

W. J. GINGRAS

GENERAL INSURANCE

Granite Block

Compliments of

EAGLE RESTAURANT

A. H. HOOD AND CO.

INSURANCE

26 Bedford Street

Compliments of

THOM McAN

MEN'S & BOYS' SHOES

190 South Main Street

Compliments of

MULLEN BROS. JEWELERS

South Main Street

MIDDLESEX UNIVERSITY

Prepare for the profession of your choice at Middlesex University. Chartered by the State

Courses of professional standing offered in medicine, podiatry, veterinary medicine, and pharmacy.

Two-year Pre-Medical, one-year Pre-Veterinary, and four-year degree (A.B., B.S.) courses offered in College of Arts and Sciences.

Modern, newly erected buildings beautifully situated on a 96-acre campus. Extensive, well-equipped laboratories. High-grade faculty of specialists for each school.

All schools of Middlesex University are co-educational.

School of Medicine—Four-year course. M.D. degree.

School of Veterinary Medicine—D.V.M. degree in four years.

School of Podiatry (Chiropody)—Three-year professional course.

School of Pharmacy—prepares for State Board examinations. Comprehensive two-year course.

THE SCHOOLS OF PODIATRY AND PHARMACY ARE LOCATED IN THE
BACK BAY BUILDING, 415 NEWBURY STREET, BOSTON.

Graduates of this high school admitted without examination. Catalog will be sent on request.

MIDDLESEX UNIVERSITY, Waltham, Mass.



THE BICKFORD ENGRAVING & ELECTROTYPE CO.

20 MATHEWSON STREET • PROVIDENCE, R. I.

THE FACT that this company was selected to design and make the engravings for this book and many other prominent Annuals, is significant that we are New England's leading Designers and Engravers of school and college publications.



With Honors

If you can't be one of the fortunate few who graduate with honors, you *can* be sure of having your graduation photographs do you honor by coming to our studio to have them taken.

Just come in at your convenience

No Appointment is ever necessary!

LET US TAKE YOUR GRADUATION PICTURES

6 splendid pictures of you in 5x7 size,
each in a special mount, for your friends
and family We have the Cap and Gown **\$2⁵⁰**

CHERRY & WEBB

NO APPOINTMENT NECESSARY

PHOTOGRAPH STUDIO

Compliments of

FALL RIVER

HERALD NEWS

SIMON S.
SULLIVAN & SON

Printers of

FINE YEAR BOOKS
SCHOOL PAPERS

Fall River, Mass.

GRADE A MILK - CREAM
PLAIN AND CHOCOLATE MILK
SOLD IN TECH CAFETERIA

—from—

CHAREST & SON DAIRY

Office: 564 King Philip Street

Dairy: 529 Birch Street, Telephone 500