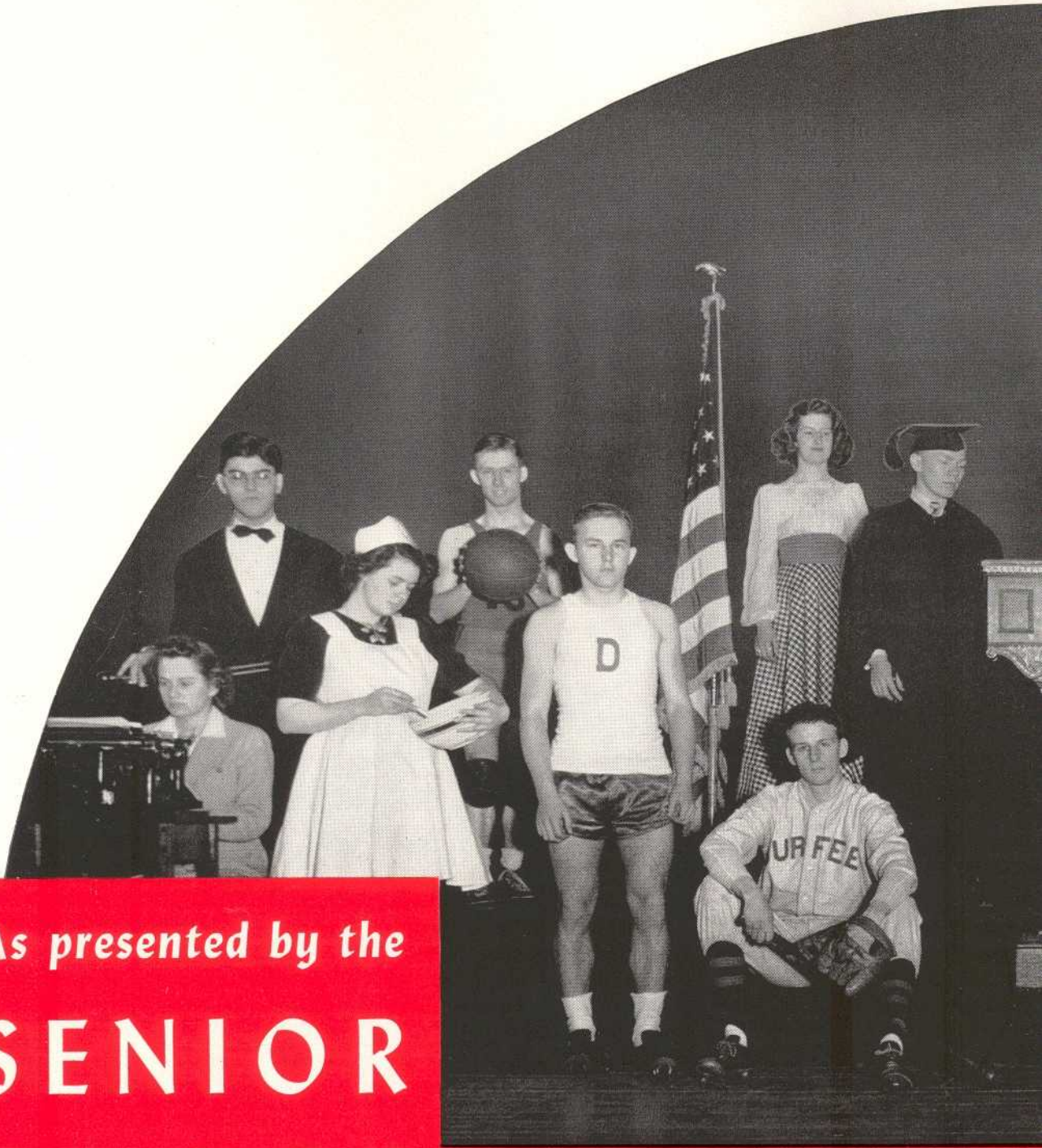


EX-LIBRIS

B. M. C.
DURFEE HIGH
SCHOOL

The PAGEANT of

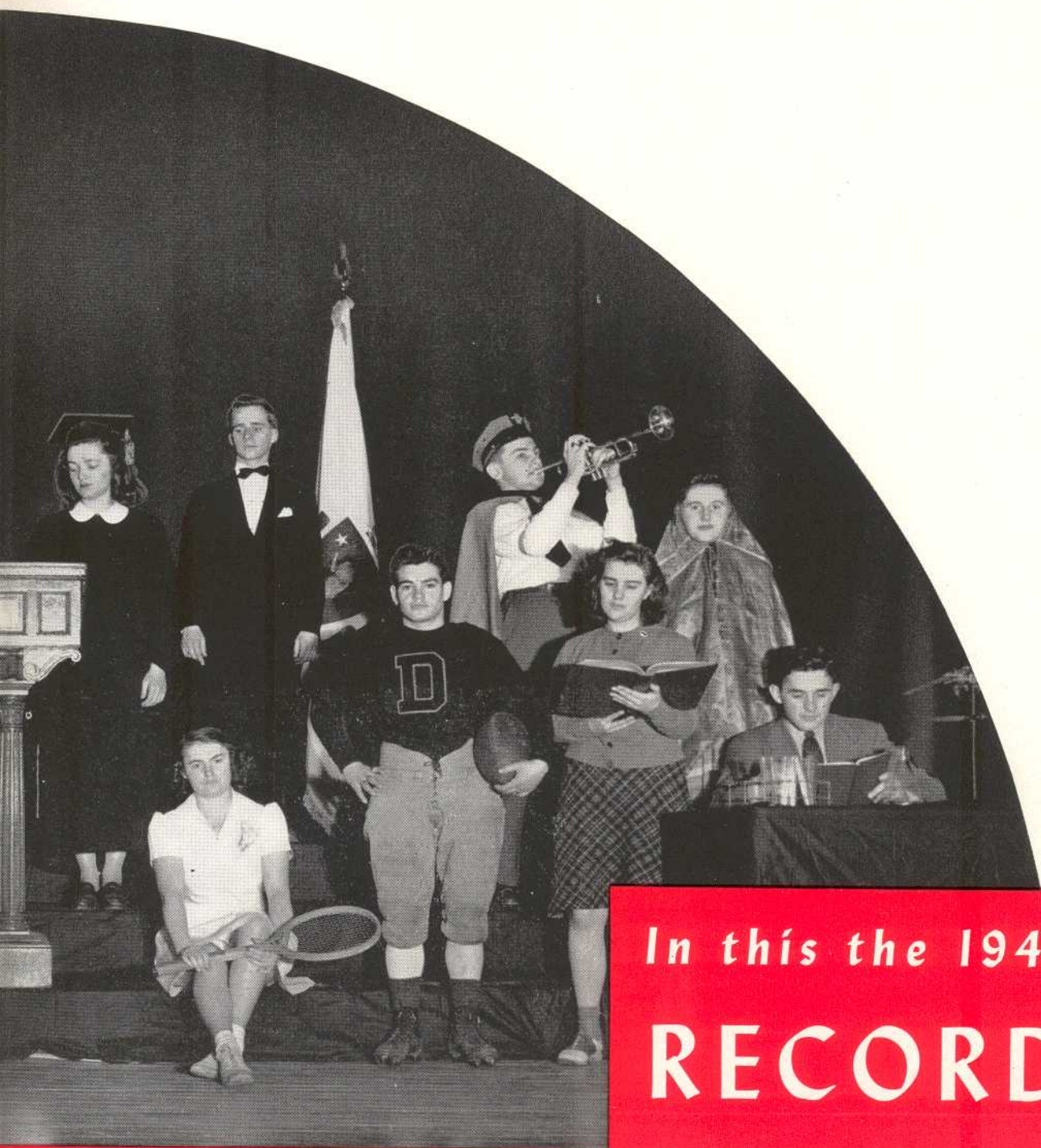


As presented by the

**SENIOR
CLASS**

Through WORK and PLAY - Through

DURFEE HIGH



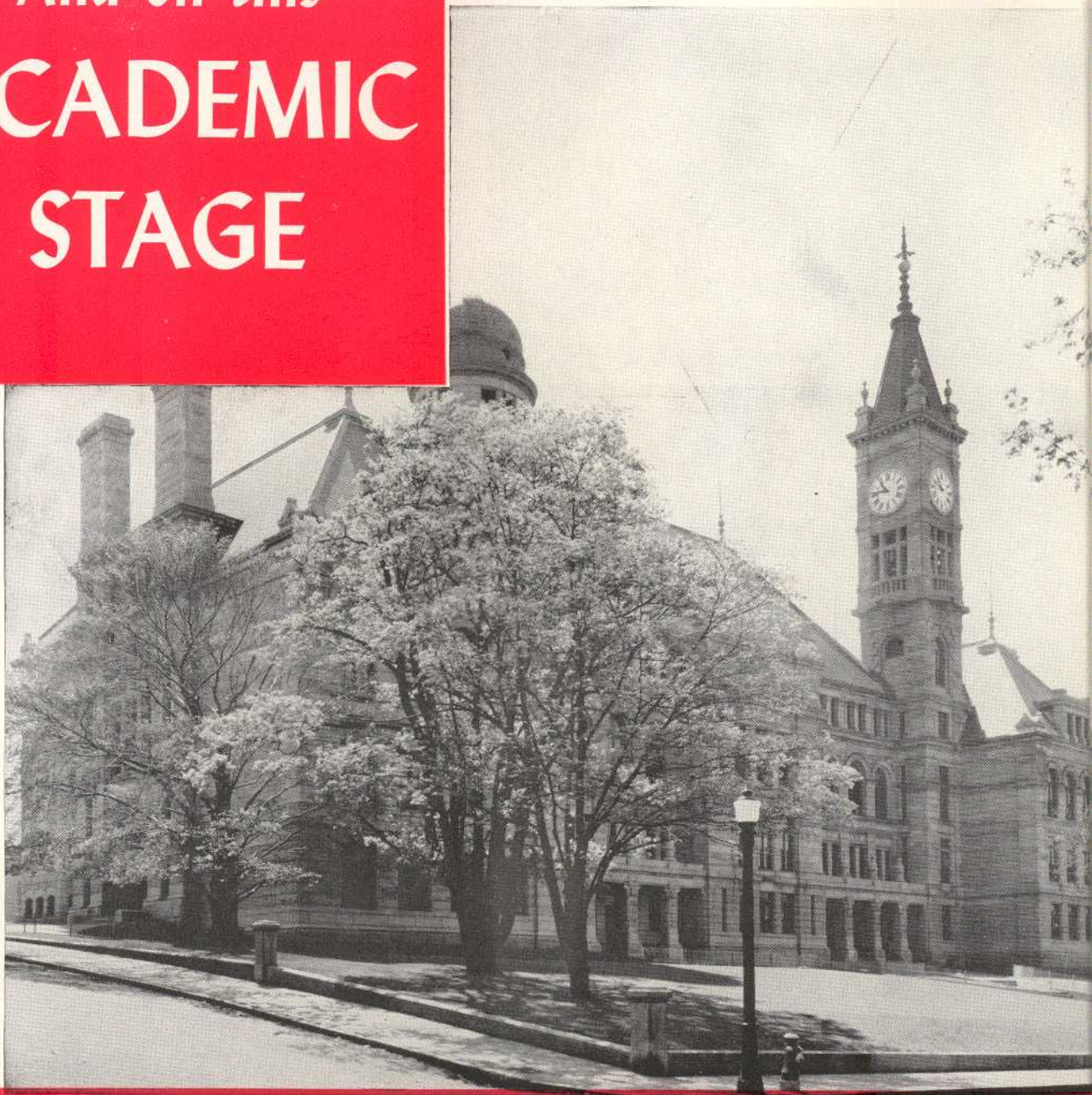
In this the 1942

RECORD

B O O K

FRIENDSHIP *and* ACHIEVEMENT

And on this
**ACADEMIC
STAGE**

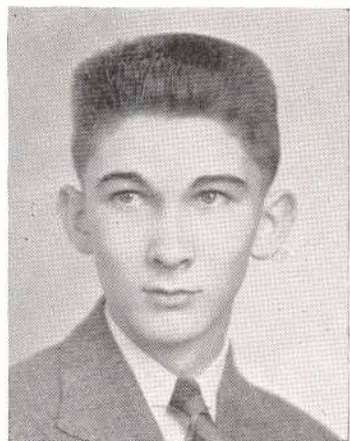


- - - the Actors entered - played their parts

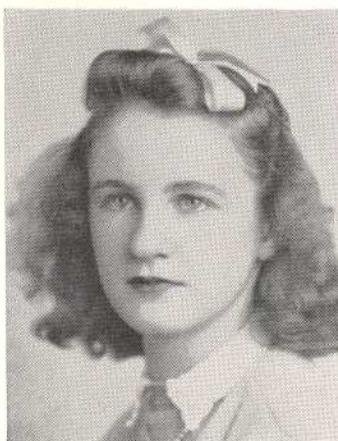


made exits to well merited applause - - - -

The Story of the Pageant...



William Carey
Editor-in-Chief



Elizabeth E. Carpenter
Staff Typist



Alice M. Ingham
Business Manager

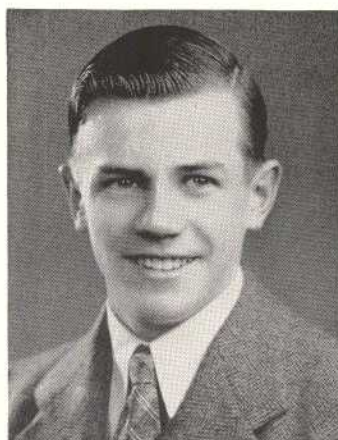


Eleanor M. Riley
Assistant Editor

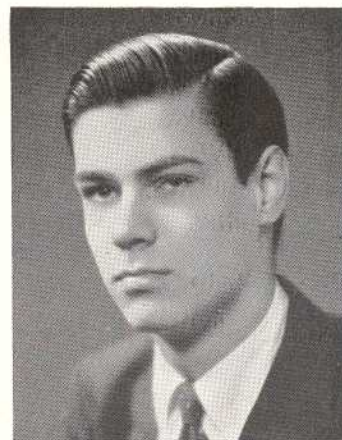


Glenna Audrey Gienty
Assistant Business Manager

By the
**RECORD
BOOK
STAFF**



Edward A. Myles
Assistant Editor



Edward H. Bowen Jr.
Assistant Business Manager

Acknowledgments

In gathering the material necessary for the publication of this annual, the editors asked for the full cooperation of every senior student in order to make the book a success. At this time the Record Book Staff wishes to thank each and every senior for his splendid cooperation.

We wish to thank the presidents and faculty advisors of the various activities for providing us with club pictures and information regarding their organizations.

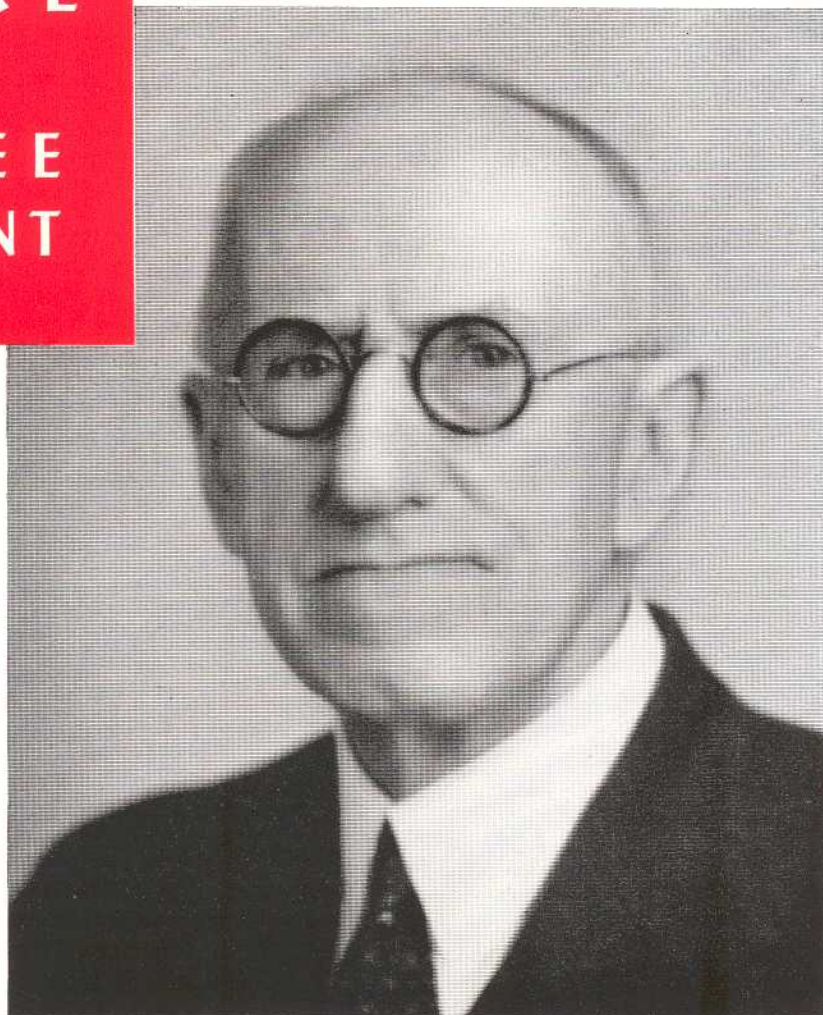
We wish to thank Joseph Toole for supplying us with the photographs which have aided greatly in the adornment of this yearbook.

We are grateful to Theresa Fallon for the assistance which she gave to the Staff Typist. All this cooperation was gratuitously given and we wish to extend our sincere appreciation to all.

We wish to thank our faculty advisors, Mr. John V. Donnelly and Miss Katherine L. Hogan, who have so effectively guided our work throughout the year.



To a
**LEADING
FIGURE**
in the
**DURFEE
PAGEANT**



.... *This* 1942

In dedicating our
Record Book
to
Mr. John M. Townsend
we, the Class of 1942,
honor him as a
gentleman, scholar,
teacher and friend.

RECORD *is dedicated*

The Pageant Master Speaks

"Keep your chins up!"

Be in there working and fighting for your rights and your principles, your church and your country.



Charles V. Carroll



Pageant Directors....

CHARLES V. CARROLL, Principal

Herbert W. Pickup, Vice-principal

Ralph M. Small, Vice-principal

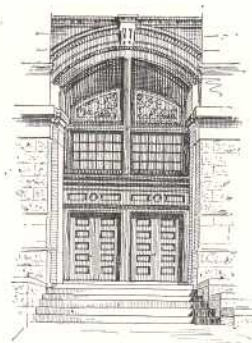
Louis A. Allard
Myron T. Ashley
Eugenie W. Bent
Ernest L. Brightman
Emily B. Campbell
Joseph O. Carroll
Mildred V. Carroll
John A. Carvalho
Winifred F. Chase
William M. Cleare
Lillian F. Cole
James F. Conlin
Mary B. Connors
Berton E. Cook
Mary F. Corcoran
Angeline B. Crispo
John T. Crowley
Frederick A. Dagata
Margaret G. Dailey
E. Christine Davis
Edna U. Delahanty
Mary A. Dolan
John V. Donnelly
Thomas F. Doran
Ruth N. Dow
Edward B. Downs
Romeo Dufour
Charles C. Earle
Ralph J. Fletcher
Gladys G. Forster
Carrie T. Foulkes
Virginia W. Frost
Frederick J. Gottwald

Mary C. T. Grandfield
Almira R. Graham
Marjorie Gray
Frederick J. Harrington
John J. Harrington
Joseph R. Hathaway
Ruth A. Heywood
George C. Hoar
Katherine L. Hogan
Blanche I. Jouett
Mary E. Judge
William F. Kaylor
Ambrose D. Keeley
Marion E. Kernan
Samuel Kessler
John E. Kiley
Frank D. Lane
Alice G. Langford
Joseph J. Lawlor
Mary Lee
Elizabeth L. Leonard
Katherine F. Lomax
John G. E. Lord
Margaret F. Lowney
Harry P. Lynch
Margarett E. Macdonald
Raymond P. Maronpot
Grace L. Martin
Charles E. Matte
Anna G. McCarty
Rose E. McHale
Victor E. Mello
E. Estelle Miles

George A. Mitchie
Stephen Nawrocki
Ruth W. Newkirk
Caesar Nobrega
Anne L. O'Neil
Isabelle E. O'Neil
Leslie W. Orcutt
Margaret H. Powers
F. Antoinette Pratt
Florence G. Pritchard
Maybelle E. Ramsay
Mary E. Ryan
Sylvia W. Seagrave
Antonio A. Serpa
Peter C. Shahdan
Marie V. Shalloo
Henry J. Shea
Charles D. Smith
Hilda I. Smolensky
Anna L. Sullivan
Catherine R. Sullivan
Daniel J. Sullivan
Dorothy C. Sullivan
Helena V. Sullivan
Marian R. Thompson
Marion L. Torphy
John M. Townsend
Louis J. Urban
Ruby M. Vosburgh
Barbara Wellington
Margaret J. Whalon
Amasa F. Williston
Helena H. Withrow

Florence M. Burns, Clerk
Lauretta L. Butler, Clerk
Anne T. Coughlin, Clerk

Katheryn A. Lenehan, Clerk
Lillian Wightman, Matron



Recognition

MISS WINIFRED F. CHASE

MISS E. ESTELLE MILES

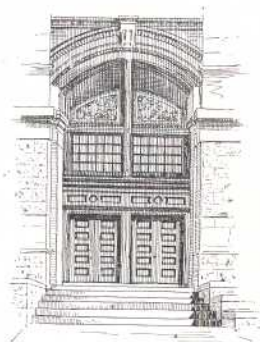
The Class of 1942 extends its congratulations and appreciation to Miss Winifred F. Chase and Miss E. Estelle Miles who this year complete twenty-five years of teaching at the B. M. C. Durfee High School. Miss Chase has been a member of the Social Science Department during this period while Miss Miles has served in the Mathematics Department and has been faculty director of the Traffic Squad. The Class of 1942 takes this opportunity to thank them for their services and to wish them many more years of happiness in the teaching profession.

In Memoriam

MISS MARIE LOUISE LAPORTE

Died May 4, 1942

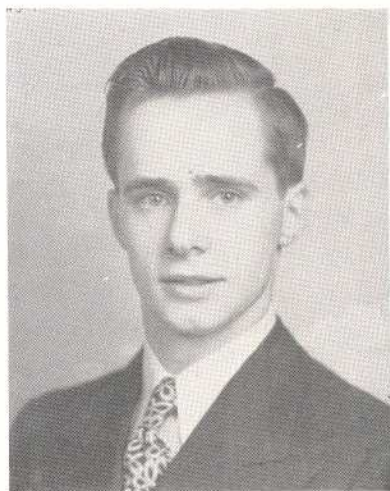
The Class of 1942 deeply regrets the death of Miss Marie Louise Laporte. Ill health forced the retirement of Miss Laporte this year after twenty-eight years of service as a teacher of French in the B. M. C. Durfee High School. The Class of 1942 with deep appreciation of her years of faithful service expresses its sympathy to the family of Miss Laporte.



Class Officers....



President
Earl Irving Dinsmore



Vice President
Lawrence Mueller, Jr.



Secretary
Anne Elizabeth Mullins

Featured Players in Durfee Pageant

TEN HIGHEST RANKING SENIORS

Lucy Baj	Eleanor Riley
Shirley Dunn	Hilton Salhanick
Jane Eddy	Ruth Sherlog
Constance Lachance	Edna Williams
Isabelle Pearson	Mary Wong

SENIOR CLASS OFFICERS

Earl Dinsmore	Lawrence Mueller
Anne Mullins	

PRESIDENT OF THE S. A. A.

Gladys Yates

SENIOR S. A. A. COUNCILLORS

Barbara O'Connell	Raymond Kret
-------------------	--------------

PRESIDENT OF HOME ROOM DIRECTORS

Richard McMurray



They Played the Leading Roles

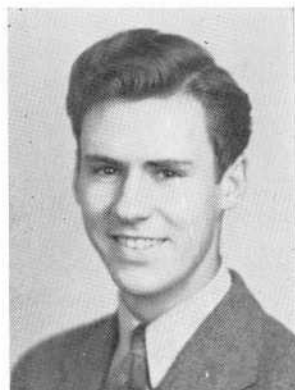
Whether the scene to be enacted called for the romance that lies in exploring new paths to knowledge and true culture :: for the epic drama of the stolen base, the touchdown run, the mighty throw of hammer, discus, javelin :: for the chuckle-breeding comedy of the classroom wit and the recess-period "slapstick" of the incorrigible clowns :: for the fine, deep friendships between classmates, teammates, teachers and students :: in the center and commanding spot in every changing phase of the Durfee Pageant could always be found some group from among



The
SENIORS
of Nineteen-Forty-Two



DOMENIC ACCETTULLO JR.
"Achie"



WILLIAM ADDISON JR.
"Bill"



IDA AGUIAR
Commercial Club 4



LOUIS ALBERNAZ
Home Room Director 1
Traffic Squad 1, 4



HAROLD ALLISON
"Gunga" "Curley"
Football 4



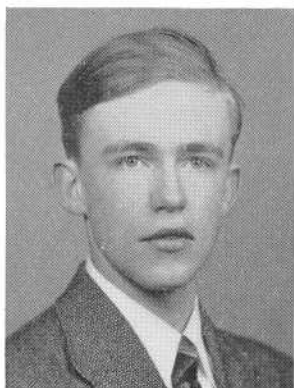
EDWARD ALMEIDA
Orchestra 3, 4



GEORGIANNA ALMEIDA
"Georgie"
Commercial Club 4



JOSEPH P. ALMEIDA
"Doc"



THOMAS ARNOLD ALMOND

"Tom"

STANLEY ALPERT

Dramatic Club 3, 4
Chorus 3, 4
Boys' Glee Club 4



DOROTHY C. ANDRADE

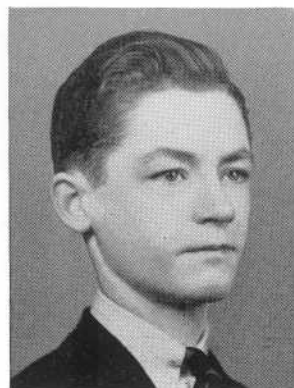
"Dot"

Home Room Director 2, 3, 4
Vice Pres., Sophomore Class—Sec., Junior Class
Literary Club 3, 4—Vice President 4
Dance Committee—Chairman 4
National Honor Society 3, 4
Commercial Club 4

JOSEPH ANDRADE

"Joe"

Orchestra 3, 4
Band 3, 4



RONALD ANTAYA

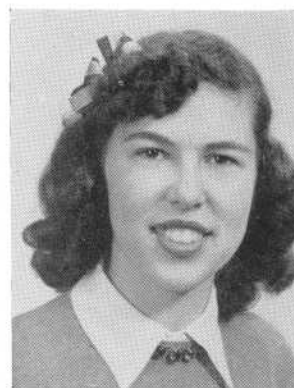
"Ronnie"

Home Room Director 1
Traffic Squad 4
Commercial Club 4
Flying Squadron
Senior Dance Committee

GEORGINA ANTUNES

"Gena"

Commercial Club 4



DOROTHY ARNOLD

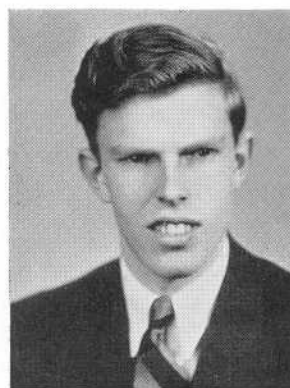
"Dot"

Commercial Club 4

JOHN C. ARNOLD

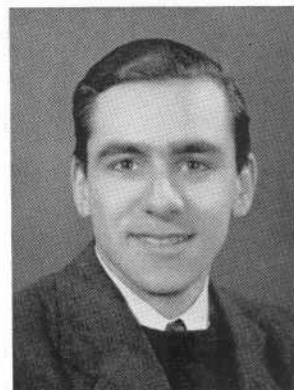
"Buck"

Home Room Director 2
Secretary of Office Aids 2
Football 2 Tennis 3
Mixed Chorus 2, 3, 4
Boys' Glee Club 4—Noted
Four Quartet 4

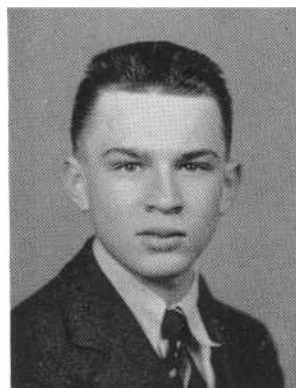




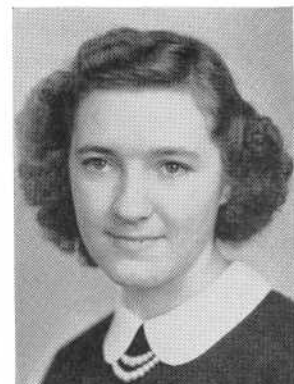
ATHENA ARONIS
"Thee"
 Commercial Club 4



JOHN ARRUDA
"Cubby"
 Traffic Squad 4



WILLIAM D. ATHEARN
"Bill"
 Home Room Director 3
 National Honor Society 3, 4



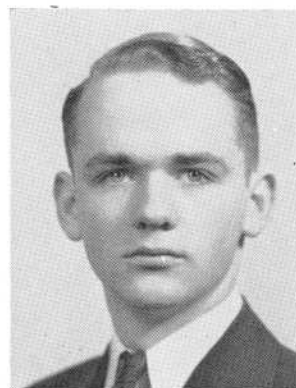
LUCY ANN BAJ
"Lu"
 National Honor Society 3—President 4
 S.A.A. Council 4—Commercial Club 4
 Forum 2—Home Room Director 2
 Library Aids 2, 3
 Class President 3
 Pin and Ring Committee 3



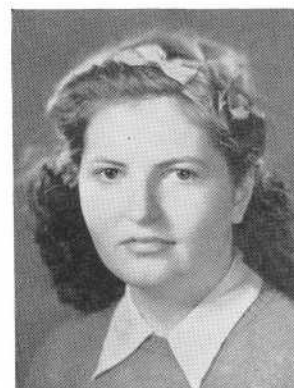
EVERETT CARLTON BAKER
 Band 2, 3, 4
 Flying Squadron 2, 3, 4
 Orchestra 3



FRANCES JANICE BANAS
"Frannie"
 Commercial Club 4
 Chorus 4
 Girls' Glee Club 4



ARTHUR E. BANVILLE



PATRICIA BARDSLEY
"Pat"
 Girls' Glee Club 3, 4
 Mixed Chorus 4



GERTRUDE BARISH



DORIS RUTH BARON
"Dot"



RINA BATTISTONI
Library Aids 2, 3, 4
Vice Pres., National Honor Society 3, 4



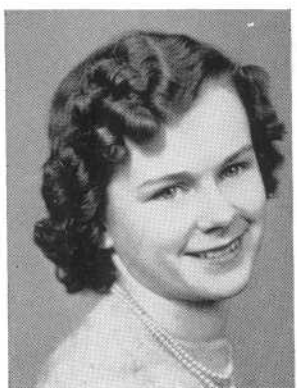
CLAIRE I. BAZINET



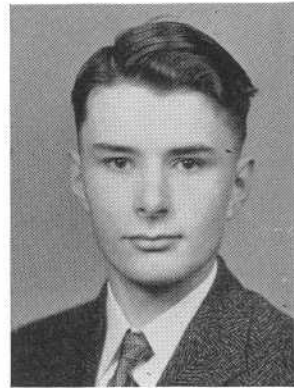
EDNA PAULINE BELMORE
Home Room Director 1
Chorus 4
Girls' Glee Club 4



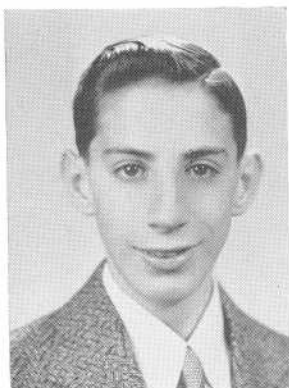
MARY ELIZABETH BENNETT
Commercial Club 4



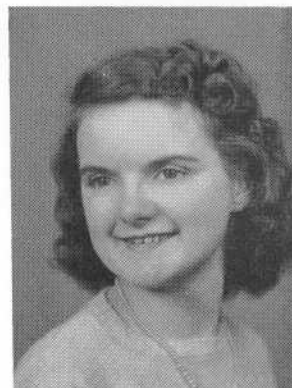
RITA M. BENNETT



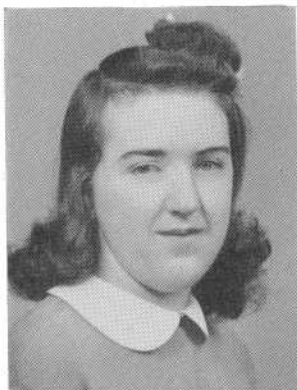
JAMES ANDREW BENSON JR.
"Jim"
Camera Club 1
Literary Club 2



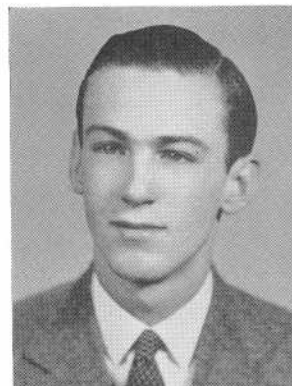
GABRIEL N. BIELLO
"Gaby"



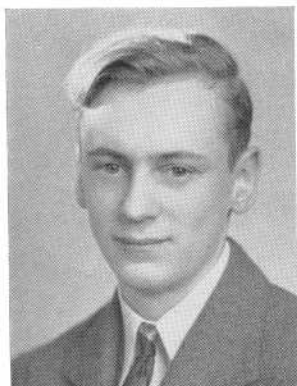
PHYLLIS ELLEN BIRKET
"Phyl"



RUTH T. BISAILLON
"Rudy"
 Chorus 4
 Girls' Glee Club 4



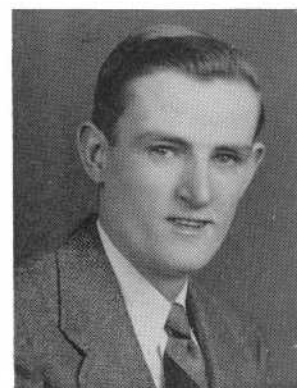
DAVID BISHOP
"Bish"
 Y.D.A. 4
 Home Room Director 1



RAYMOND BISZKO
"Ray"



HAROLD P. BLAKE JR.



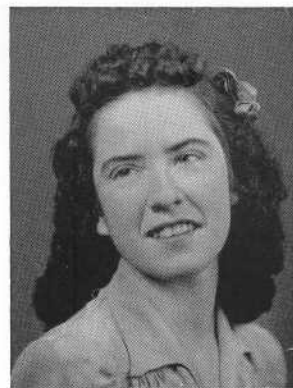
WILLIAM BLAKE
"Bill"



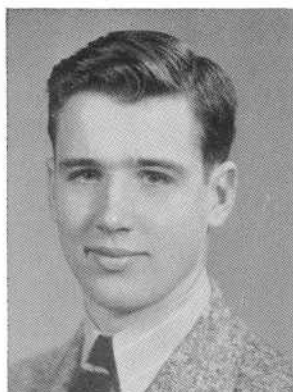
ANITA C. BOISSONEAU
 Commercial Club 4
 Health Club Councillor 2
 Home Room Director 3



LUCILLE B. BOISSONEAU
"Lou"



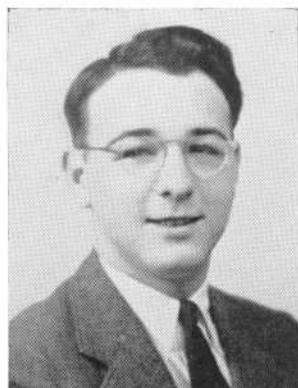
DOROTHY SHARP BOLGER
"Dot"



JOSEPH FRANCIS BOLGER



PHYLLIS MAY BOLGER
"Phyl"



MERVIN BOLUSKY
"Bo"
 Dramatic Club 4
 Thespians 4



EVELYN BOOTH
"Bootsy"
 Commercial Club 4



JOSEPH R. BORDEN
"Joe"



RICHARD DURFEE BORDEN
"Dick"
 Home Room Director 2, 4



CONSTANCE JAYNE BORGES

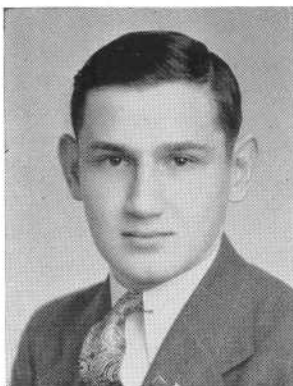
"Connie"

Commercial Club 4
Advisory Board 4



DIANA BORGES

Girls' Glee Club 4
Mixed Chorus 2, 3, 4



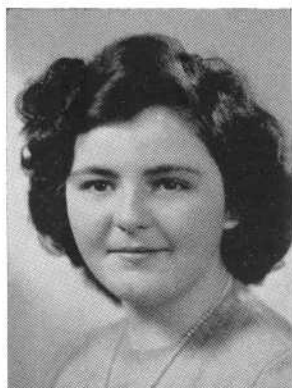
EDMUND F. BORONSKI



MARY ANN BOTELHO

"May"

Health Club Councillor 2
Commercial Club 4



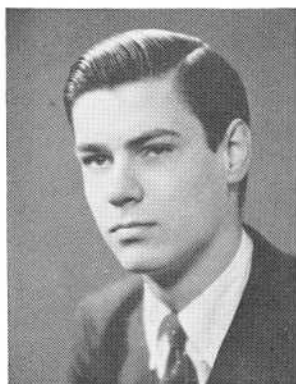
RACHEL JACQUELINE BOUCHARD

"Ray"



ROBERT R. BOULAY

"Bob"



EDWARD H. BOWEN JR.

"Ted"

Home Room Director 2, 4
Traffic Squad 2
Chorus 2, 3, 4—Bus. Mgr., 3, 4
Record Book Staff 4
Boys' Glee Club 4—Y.D.A. 4

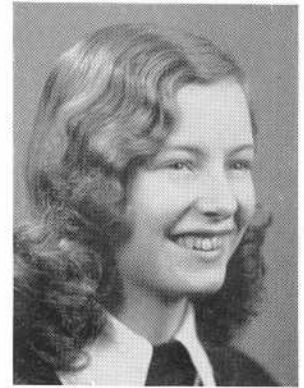


FAITH A. BOWERS

Home Room Director 2
Commercial Club 4



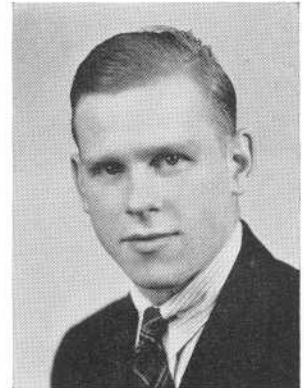
FREDERICK J. BOYNTON
"Ka-Nute" "Teddy"



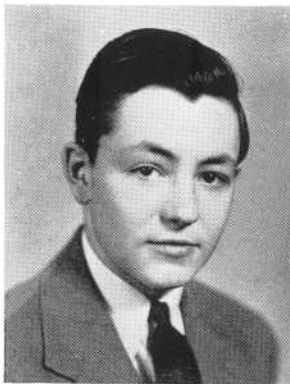
RUTH ARLINE BRADSHAW
"Brad"
 Commercial Club



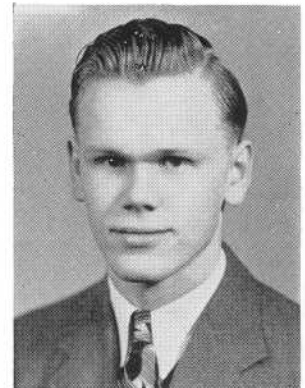
JOSEPH ORMAND BRAGA
"Buddy"
 Flying Squadron 2, 3, 4
 Sergeant & "C" Flight Leader 2, 3, 4
 Band 1, 3, 4
 Ass't. Student Band Conductor 1



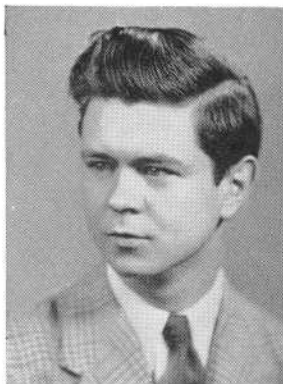
RODNEY O. BRAYTON JR.
 Traffic Squad



JOHN R. BRAZ JR.
"Brazzy"



CHARLES HENRY BRIDGE JR.
"Charley"



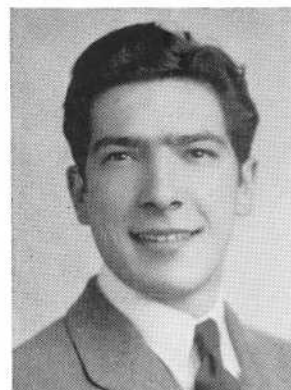
RAYMOND T. BRIDGE
"Ray"
 Health Club 2



VIRGINIA BRIDGE
"Ginny"
 Gift Committee



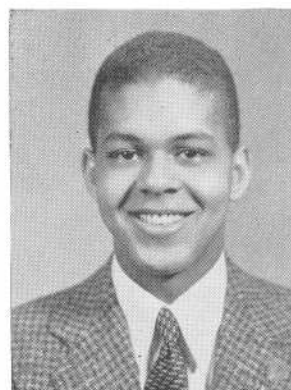
CONSTANCE FRENCH BRIGGS



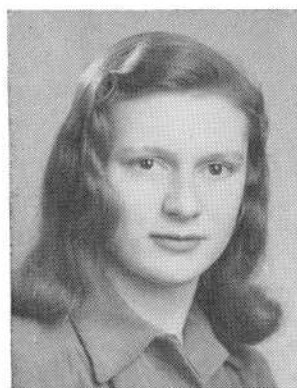
SERAPHIM CABRAL BRILHANTE
"Britt"



RAYMOND E. BRITLAND
"Ray"



THOMAS JAMES BROWN
"Brownie" "Tom" "Me"
Gift Committee 4
Chorus 2, 3, 4—Glee Club 4
Track 2, 3, 4
Y.D.A. 4



CONSTANCE GRACE BROWNELL
"Connie"



ELIZABETH ANN BROWNELL
"Betty"



JOSEPHINE M. BUBA
"Jo" "Josey"



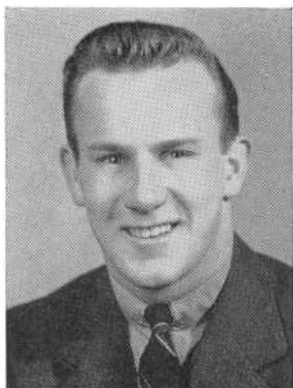
DONALD BUCHAN



HENRY W. A. BUCKLEY
"Buck"
 Office Aid 4



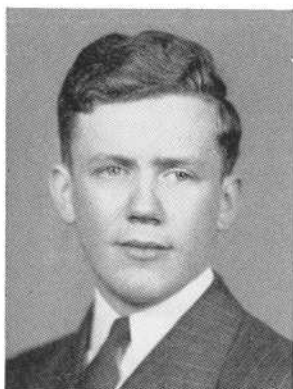
MARY GERTRUDE BUCKLEY
"Sis" "Buck"



ELLIOT WILLIAM BURROWS
"Lefty"



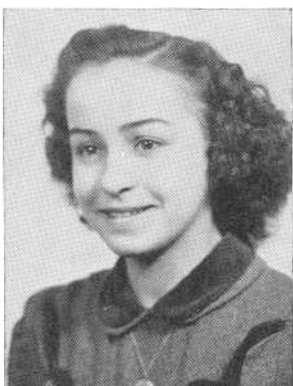
INA M. BURTON
 Commercial Club 4
 Home Room Director 4
 National Honor Society 3, 4



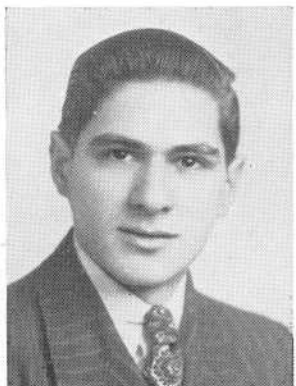
JOSEPH DANIEL BUTLER



DOROTHY BYRON



MARY HELEN CABECEIRAS
"Cabby"
 Commercial Club 4



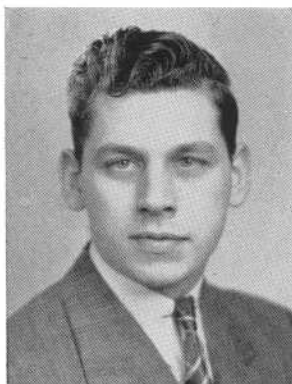
ARTHUR CABRAL
"Art"



MARY LOUISE CALLAHAN
"Mae" "Cal"
 Commercial Club 4



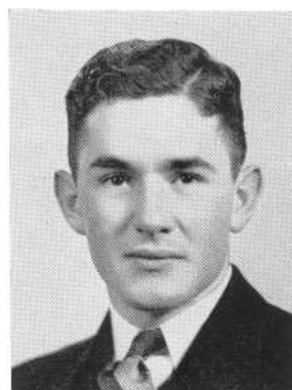
RUTH E. CAMPBELL
"Ruthie"



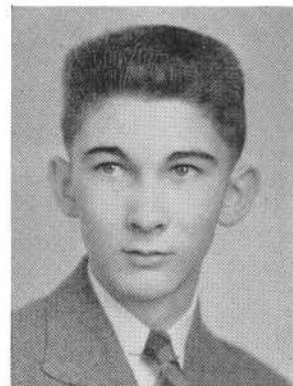
NORMAND J. B. CANTIN
 Traffic Squad 2, 3, 4



MURIEL L. CARD
 Dramatic Club 4
 Thespians 4



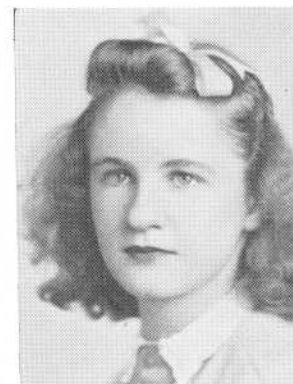
ALINDO P. CARDELLI
"Lindy"
 Electrical Club 2, 3, 4
 Vice President 3, President 4



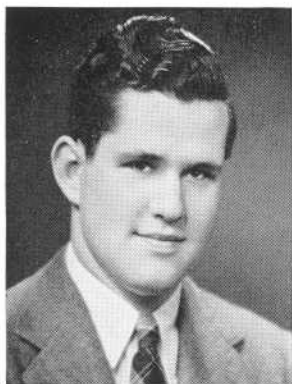
WILLIAM H. CAREY
"Bill"
 Durfee Hilltop Staff 4
 Record Book Staff 4
 Editor-in-Chief 4
 Home Room Director 2



IRENE CARON
"Penny"



ELIZABETH ELLEN CARPENTER
"Betty" "Bet"
 Traffic Squad 2
 Home Room Director 3
 Commercial Club 4
 Record Book Staff 4
 Typist



ROGER LEE CARROLL
Football 1, 2, 3—Varsity 2, 3
YDA. 2, 3, 4
Sergeant at Arms 3, 4
Varsity Club 2, 3, 4



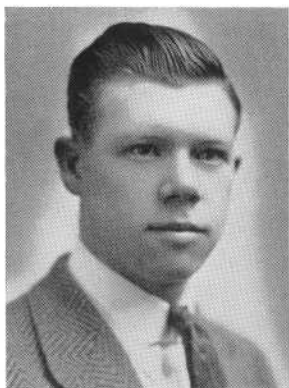
EMILIA S. CARVALHO



MARY CARVALHO
"Mamie"
Home Room Director 2, 3



RITA MAY CASH



THOMAS CASSIDY
"Hop"



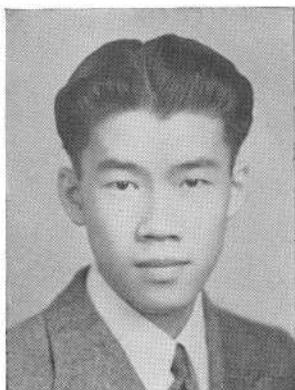
PAUL L. CHEBOT
"Paulo" "Chebotnick"
Band 1, 2, 3, 4
Orchestra 3, 4
Chorus 3, 4
Boys' Glee Club 4
Dramatic Club 4



EDWIN THOMAS CHEETHAM
"Ed"
Y.D.A. 4



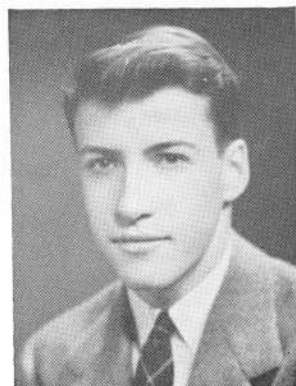
FRED CHEW
"Muscles"
Track 2, 3, 4



HENRY S. CHIN

"Hank"

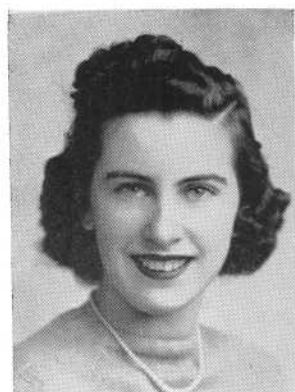
Class President 1
S.A.A. Councillor 2
Vice President of S.A.A. 3
President of YDA 4
Dramatic Club 4



ROBERT HOWARTH CLIFTON

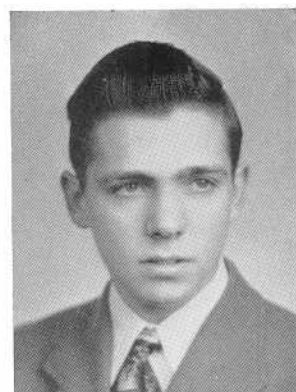
"Bob"

Home Room Director 2, 3, 4
Y.D.A. 3, 4
Advisory Committee 4



EDNA ANNE COMISKEY

Home Room Director 2
Gym Leader 3
Commercial Club 4
Basketball 3



THOMAS D. CONLON

"Tom"

Y.D.A. 4



EILEEN E. CONNELLY

"Chubby"



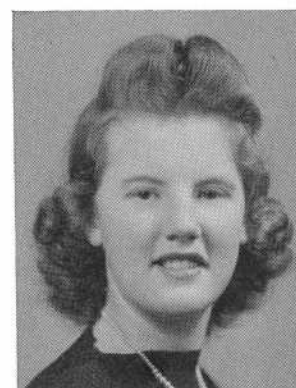
FLORENCE JAYNE CONNORS

"Flossie"



VIRGINIA CONROY

"Ginny"



HELEN MIRIAM COOGAN

Home Room Director 4
Pin and Ring Committee 4
Chorus 3, 4—Girls' Glee Club 4
Durfee Dramatic Club 3, 4
Thespians 4



ALFRED CORBIN



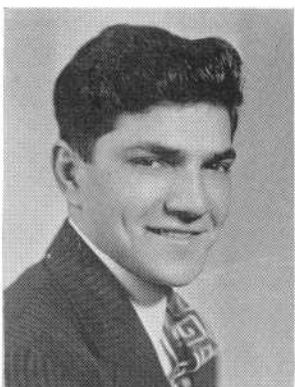
HELEN CORDEIRO
Commercial Club 4



EVELYN CORNELL
"Evie"

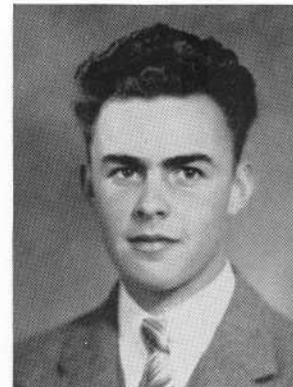


BEATRICE M. CORREIRA
"Bea"



DANIEL JESSE COSTA
"Jes"

Home Room Director 2, 3
Traffic Squad 3, 4



JOSEPH VINCENT COSTA
"Joe"



LAURA COSTA
Commercial Club 4
Camera Club 3



OLIVE COSTA
"Olly"
Aid in Infirmary



LEO R. COTE



GEORGE J. COULOMBE



SHIRLEY COWELL
"Shirl"



DONALD A. CRANE
"Don"



IRENE CROSS
"Squealy"



KATHLEEN M. CULKIN
"Kitty" "Kay"
Girls' Numeral Club 3
Volleyball 3
Gym Leader 3



KATHLYN DOROTHY CUNNEEN
"Chickie"
Commercial Club 4



RUTH MAY CURRAN



RAYMOND CUSTY
Track 2, 3, 4



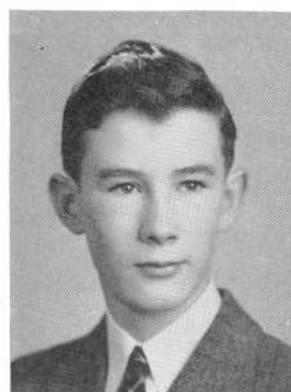
JOSEPH F. DALEY
"Nubbins"
Sanco Club 2



ROLAND DALEY
"Nighty"



M. LORRAINE DANSON
Home Room Director 2, 3



JOHN J. DARCY
"J. J."
Flying Squadron 4



MARGERET M. DARCY
"Darce"



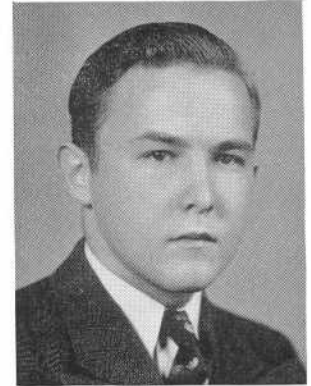
WILLIAM DARCY
"Bill"



DORA DE AMICIS
Literary Club 2
Home Room Director 4



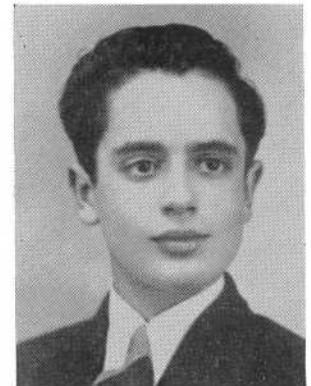
CARROLL DEAN
"Deanie" "Mc"
 Health Club 2
 Home Room Director 2
 Chorus 4—Glee Club 4



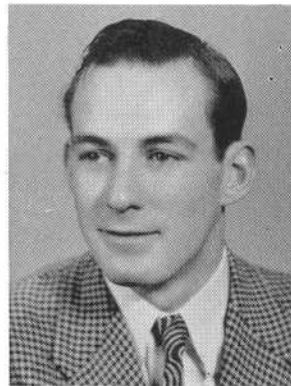
HOLGATE JOSEPH DEAN
"Stormy"
 Football 3, 4
 Track 2, 3, 4
 Varsity Club 4



CLAIRE O. DELISLE



ALBERT BOTELHO DE MATOS
"Al"
 Senior Gift Committee 4
 Orchestra 1, 2, 3, 4



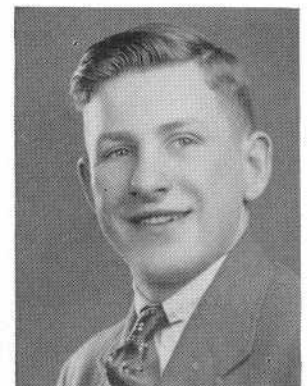
WILLIAM J. DEMPSEY
"Squeaky"



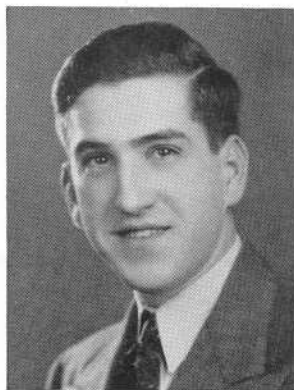
GRACE VIRGINIA DEPLITCH



RUTH CLAIRE DEPLITCH



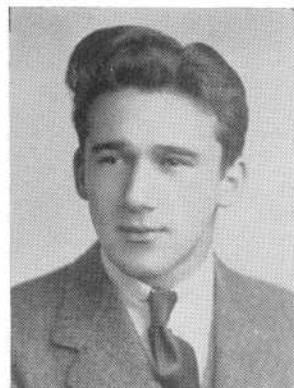
EDWARDS R. DESROSIERS
"Eddie"
 Traffic Squad 2, 4



HENRY M. DESROSIERS
"Mush"



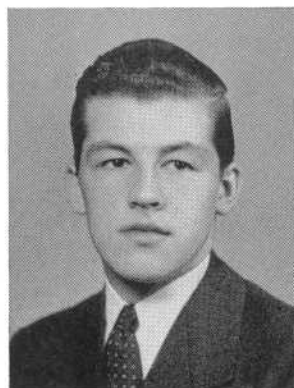
MARY M. DI FONZO
"May"
 Sanco Guide 2



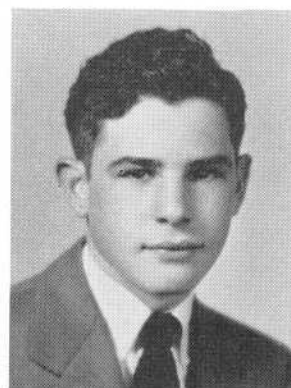
NICHOLAS ANTHONY DIGIAMMO
"Nick"



EARL IRVING DINSMORE
"Ding Ding"
 President of Sophomore Class
 President of Senior Class
 Forum 1, 2, 3, 4—Vice President 2
 Y.D.A. 1, 2, 3—Track 2
 Traffic Squad 1, 2, 3, 4
 Home Room Director 1, 2, 3, 4
 Flying Squadron 2— Commercial Club 4



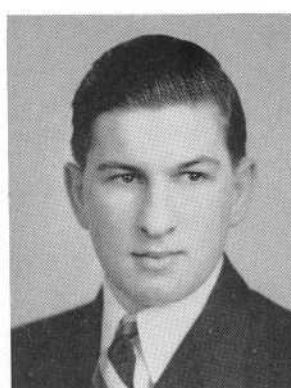
ERNEST H. DOHNE
"Ernie"



NATHAN DAVID DONDIS
"Nate"
 Dramatic Club 3, 4—Thespians 3, 4
 Orchestra 2
 Chorus 2, 3, 4—Glee Club 4
 Y.D.A. 4



WILLIAM ROBERT DONOVAN
"Bill"



MAURICE L. R. DORE
"Min"
 Traffic Squad 4



EDWARD FRANCIS DOUGHERTY JR.

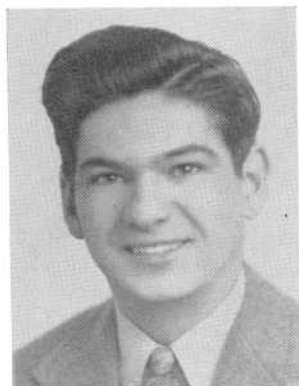
"Squeaky" "Ed"

Forum 3
Camera Club 2



WILLIAM R. DROBYSKI

"Bill" "Butch"



DENNIS DUARTE

NORMAND L. DUBE

"Norm"

Sanco Guide 2
Commercial Club 4



EDWARD DUBIEL

"Ed"

Commercial Club 4
Flying Squadron 4
Hilltop Staff 4
Vice President of Freshman Class
Home Room Director 3



ROBERT ARTHUR DUBREUIL



GEORGE DUERDEN

"Chick"

GRACE A. DUFFY

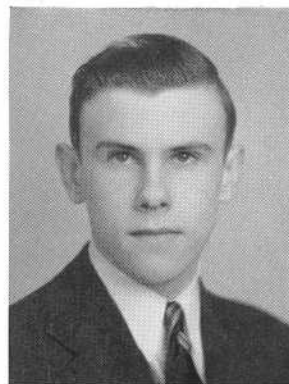
"Gracie"

Commercial Club 4





ELEANOR RITA DUMAS



ROGER J. B. DUMONT
"Rog"



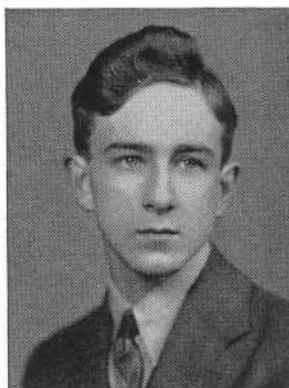
EARL WILLIAM DUNHAM
Enlisted December 31, 1941



SHIRLEY DUNN
National Honor Society 3, 4
Commercial Club 4



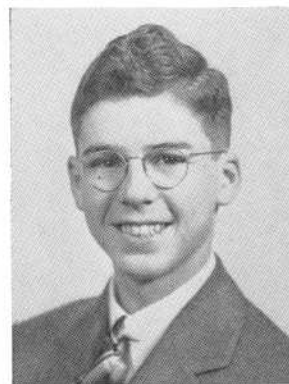
HAROLD DUSOE
"Duke"



HENRY DUSSAULT
"Duke"
Chorus 3, 4
Boys' Glee Club 4
Track 3, 4



NELSON E. DUSSAULT
"Nel"



ROBERT W. DUSSAULT
"Bobby"
Home Room Director 2, 4



WILLIAM DUSSAULT
"Red"



RUTH E. DWYER
"Ruthie"
Cheerleader 3, 4—Leader 4
Senior Dance Committee 4
Dramatic Club 4
Gym Leader 3



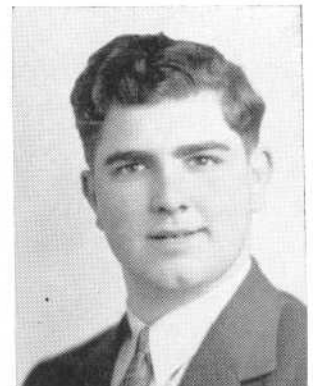
JANE B. EDDY
National Honor Society 3, 4
Home Room Director 2
Pin and Ring Committee—Chairman 3, 4
Library Aid 2, 3, 4—Vice Pres., 3, President 4
Y.D.A. 4



THERESA MARIE FALLON
"Terry"
Commercial Club 4
Assistant Staff Typist



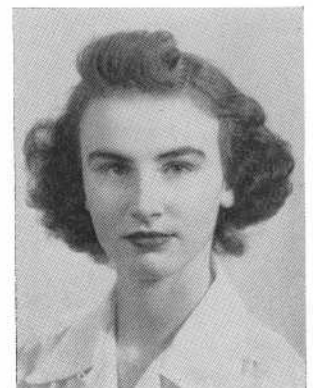
FLORENCE EMILIA FARIA
"Mickey" "Dimples"
Traffic Squad 2, 3, 4
Secretary 3, 4



MANUEL FARIAS JR.
"Manny"
Chorus 1, 2, 3
Traffic Squad 1, 2, 4



EDWARD M. FARYNIARZ
"Ed"



HELEN ELIZABETH FAY
"Betty"



ROBERT R. FEENEY
"Bob"



BELLA ANN FEINBERG
"Feenie"



JOSEPH AARON FELDMAN
"Joe"
 Orchestra 1, 2, 3, 4—Chorus 2, 3, 4
 Boys' Glee Club 4—String Quartet 4
 Traffic Squad 1, 2, 3, 4—First Lieut. 4
 Home Room Director 2
 Forum 2—Y.D.A. 4



EDNA FELTEAU



JEAN FERGUSON
"Fergie"
 Home Room Director 3, 4
 Y.D.A. 4—Secretary 4



VIRGINIA JANE FERGUSON
"Blondie" *"Ginny"*
 Aid in Infirmary 4



ROSE FERRARO



LOUISE A. FERREIRA
"Big Sister"
 Chorus 1, 2, 3, 4



OLIVE S. FERREIRA
"Lollie"
 Commercial Club 4



OLIVIA FERREIRA
"Olly"
 Commercial Club 4



WILLIAM J. FIELD
"Bill"



CYNTHIA PARKIN FIELD
"Cyn"
 Orchestra 2, 3, 4
 Cheer Leader 3



SHIRLEY D. FINE
 Band 2, 3, 4
 Orchestra 3, 4
 Commercial Club 4
 Forum 2—Chorus 3



MARY FINGLIS
 Home Room Director 3
 National Honor Society 3, 4
 Commercial Club 4



MARY LOUISE FINUCANE
"Weezie" "Lou"
 Library Aid 4



LILLIAN EDITH FITTON
"Lil"
 Camera Club 3, 4
 Forum 2
 Home Room Director 1



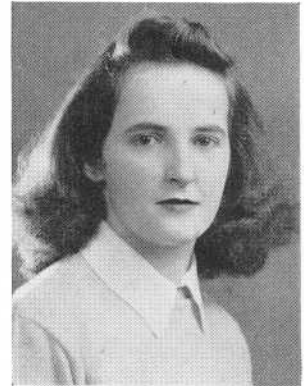
JANICE SALLYANN FITZGERALD
Y.D.A. 4
Dramatic Club 4—Thespians 4
Home Room Director 2



CHARLOTTE L. FITZGIBBONS
"Fitzie"
Girls' Numeral Club 2
Basketball 2—Volleyball 2
Cheerleader 3, 4—Head Cheerleader 4



CHARLOTTE M. FLANAGAN
Commercial Club 4



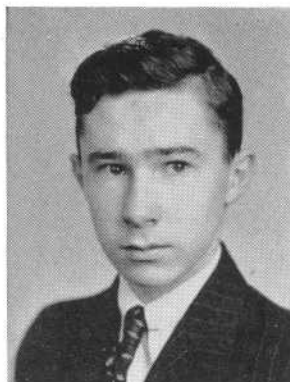
GRACE KATHERINE FLANAGAN
Camera Club 3



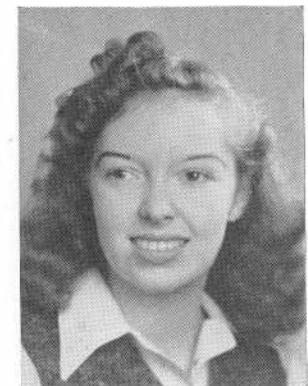
RITA FLUETT
Commercial Club 4



DOROTHY ANN FLYNN
"Dot"



JAMES R. FLYNN
"Jim"



MARY C. FLYNN
"Ginger"



BRUCE PHILIP FOGWELL

"Foggie"

Home Room Director 2, 3, 4
Chorus 2, 3—Orchestra 2
Dramatic Club 4—Thespians 4
Advisory Board 4



SHIRLEY MAE FOZZARD

"Fuzzy"

Chorus 3, 4
Girls' Glee Club



LEONARD FRANCISCO

"Cisco"

GERALDINE ETHELYN FRANKLIN

"Gerry"

National Honor Society



EULALIA FREITAS

"Lolly"

Camera Club 4



ARMAND FRENETTE



GLORIA FRIEDLANDER

"Glo"

Advisory Board 4 Forum 2
Home Room Director 2, 3
Commercial Club 4
Dramatic Club 3, 4—Vice President 4
Thespians 3, 4



CHARLES FURTADO



JOHN FURTADO



C. WILLIAM FURZE

"Bill"

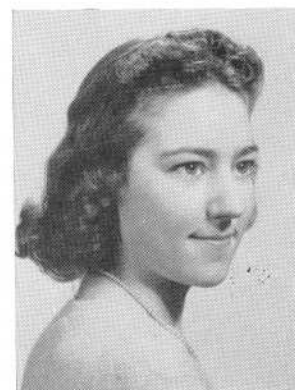
Home Room Director 2
Basketball 2, 3
Ass't. Manager Football 2, 3—Manager 4
Y.D.A. 4



DORIS GAGNIER

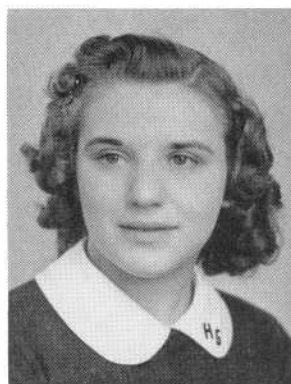
"Dot"

Home Room Director 4
Literary Club 4



MARGERET D. GANGWISCH

"Dot"



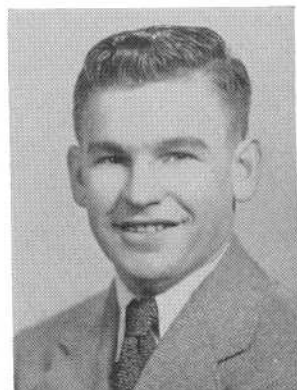
HELEN GARCIA

Traffic Squad 2



MARY ELLEN GARVEY

Commercial Club 4
National Honor Society 3, 4



JOHN P. GASIOR

"Butch" *"Jan"*



EUNICE D. GASKILL

Literary Club 4



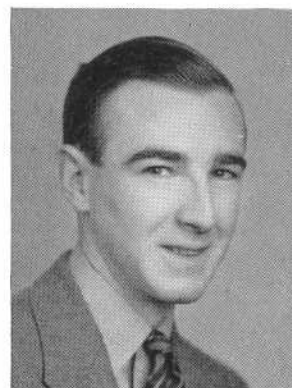
LAURICE GEORGE
"Georgie"



EDWARD HICKS GESNER
Traffic Squad 3, 4
Flying Squadron 3, 4



GLORIA B. GIANNOTTI
Home Room Director 1, 2, 3, 4
Chorus 2, 3, 4—Glee Club 4
Commercial Club 4



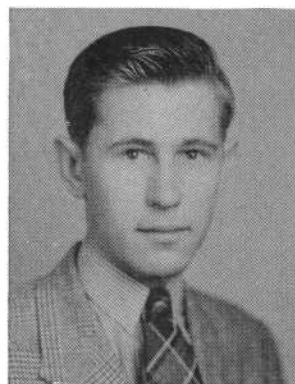
RICHARD GIBBONS
"Ricky"



JOHN ROBERT GIBNEY
"Flip"



GLENNA AUDREY GIENTY
"Glen"
Commercial Club 4
Dramatic Club 4
Camera Club 3, 4
Senior Dance Committee
Home Room Director 2
Ass't. Business Manager Record Book 4



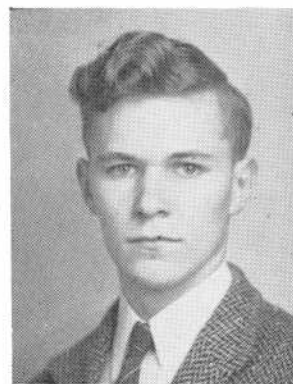
ERNEST N. GIFFORD



JAMES H. GILDARD
"Bud"
Orchestra 2, 3—Band 2
Chorus 2



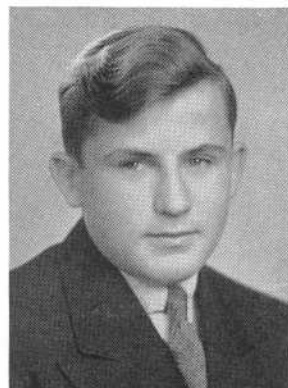
DAVID GISHERMAN
"Gish"
Traffic Squad 2, 3



JOHN J. GLEASON
"Jack"



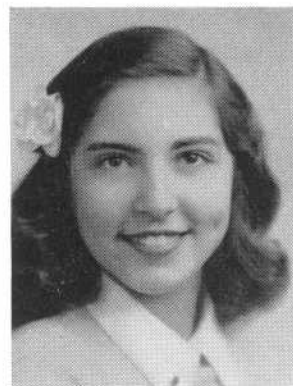
LORETTA GLYNN
"Vallie"



HENRY EDWARD GOLAN



BEATRICE GOLDSTEIN



ESTHER ELAINE GOLDSTEIN
"Es"
Dramatic Club 3, 4—Secretary 4
Orchestra 2, 3, 4—Band 2, 3, 4
Thespians 3, 4—Secretary 4
Chorus 3, 4



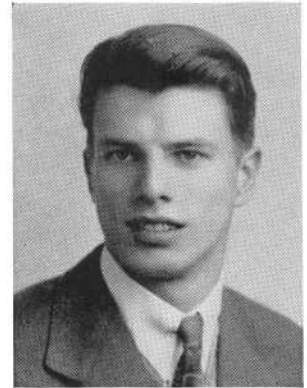
IRENE GONSALVES



PRISCILLA GONSALVES



JAMES GRAHAM
"Cooky"



DUANE R. GRINNELL



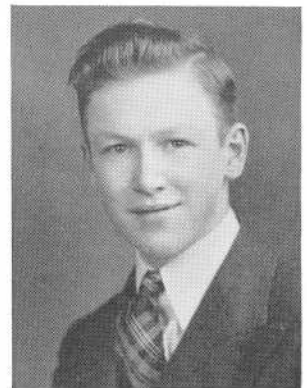
VIVIAN GUIMOND
"Viv"
Home Room Director 4
Commercial Club 4
Literary Club 4



JOHN H. GUTEK
Electrical Club 3, 4
Secretary 4



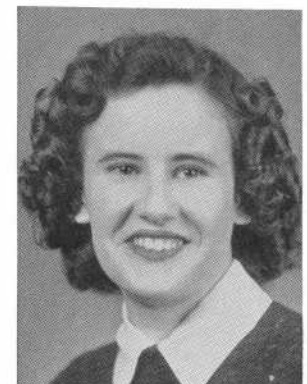
JOHN HAGEN
"Jack"



PAUL THOMAS HAGGERTY
"Red"



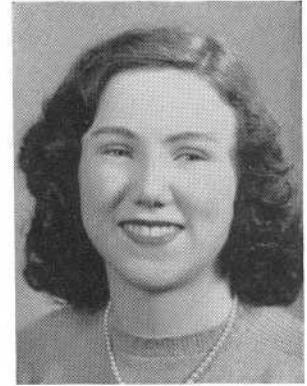
RITA HALBARDIER
Dramatic Club 3, 4—Mistress of Revels 4
Thespians 4
Forum 2, 3, 4
Girls' Glee Club 4
Commercial Club 4



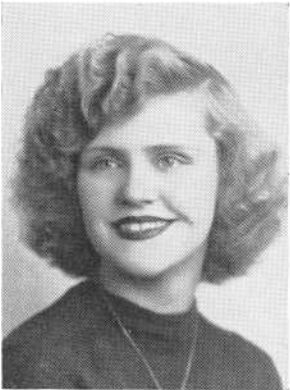
MARY ELIZABETH HALL
"Betty" *"Beth"*
Camera Club 4



WILLIAM HALL JR.
"Bill"



VIRGINIA E. HANLEY
"Ginny"
Commercial Club 4



BARBARA HANNAFIN
"Barbe"



EDWARD HARACZ
Basketball 2
Football 2, 3
Varsity Club 3, 4



MARGUERITE C. HARDY
"Margie"



EUNICE MAY HARTLEY



WILLIAM E. HARVEY
"Bill"



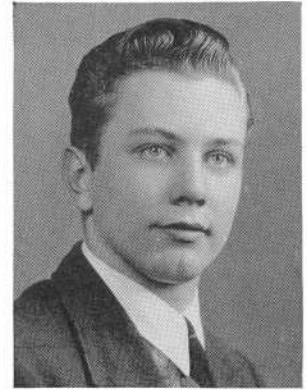
WINIFRED HASPREY
"Winnie"
Commercial Club 4



JAMES EDWARD HEALEY

"Jim"

Traffic Squad 2
Home Room Director 3
Electrical Club 2, 3



THEODORE FREDERICK HEARTH

"Ted"

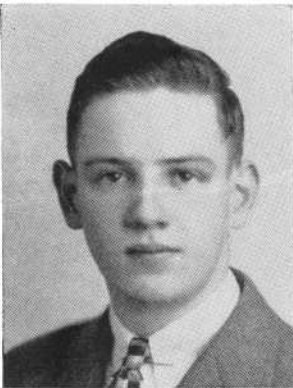
Traffic Squad 2, 3, 4—First Lieut. 4
Home Room Director 1, 4



EVELYN HEBERT

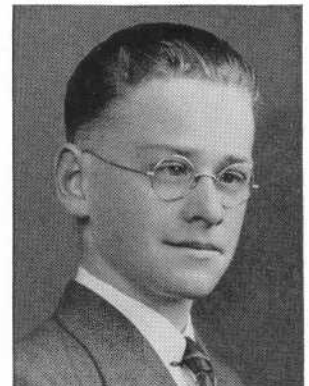


ANNE MARIE HENRY



ALBERT H. HICKS

"Al"



EDWARD JOSEPH HIGGINS

"Ed"



FRANCIS HIGGINS

"Frank" *"J. J."*

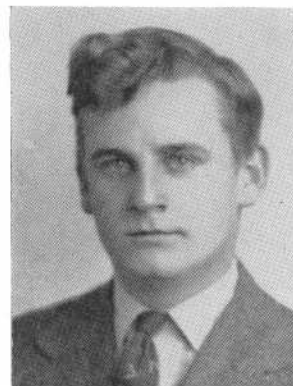


HELEN M. HINCHCLIFFE

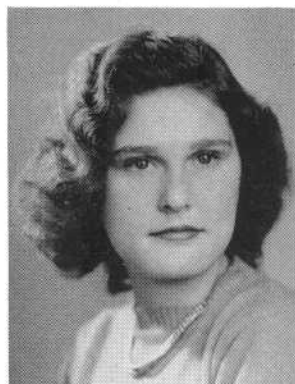
"Red"



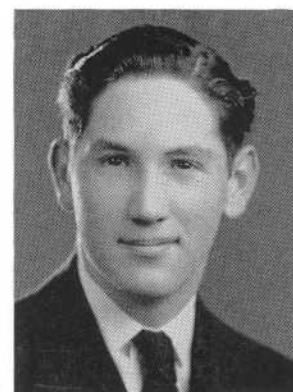
LAURETTA THERESE HOEY
"Blondie"



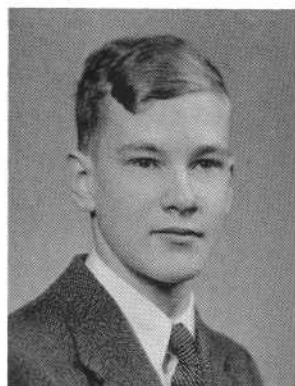
JOSEPH A. HOLDEN
"Joe"



EDNA HOLLAND
"Sis"
Home Room Director 2



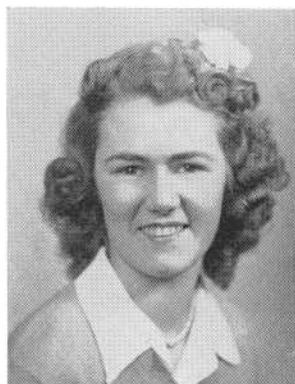
EDWARD J. HOPKINS
"Ed" "Hop"
Sanco 2
Commercial Club 4



STANLEY HOWARD
Y.D.A. 4



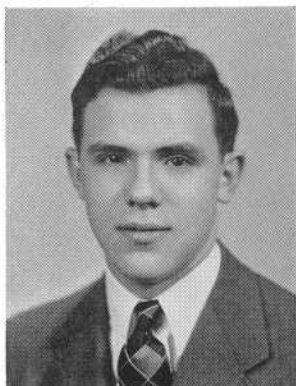
MABEL HUTCHINGS
Forum 3
Health Club Councillor 2
Orchestra 2, 3, 4



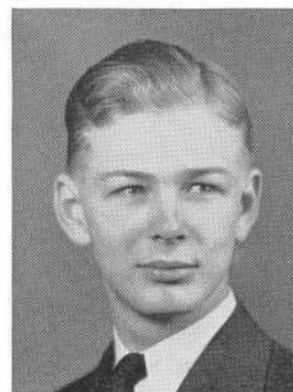
SHIRLEY MAE IBBOTSON
"Shirl"



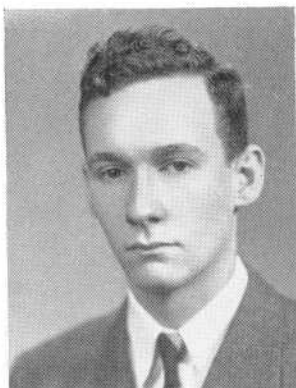
ALICE M. INGHAM
Health Club 2—Secretary
Home Room Director 2, 3, 4
Vice President, Secretary 3
National Honor Society 3, 4
Commercial Club 4
Record Book Staff 4—Business Manager



CASIMIR S. IWANSKI
"Kazy"



CHAUNCEY DEPEW JACKSON
"Jack"
Y.D.A. 4



JOHN JACKSON
"Jack"



GEORGE JAMMEN



GEORGETTE JEAN
"Georgie"



JOSEPH A. JEAN
"Joe"



BONNELL KAY JENCKS
"Bonnie"
Durfee Dramatic Club 3, 4
Mistress of Ceremonies
Thespians 3, 4



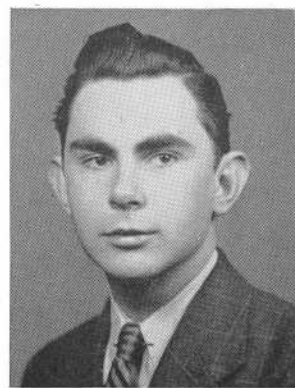
WALTER JOHNSTON



JOHN RUSSELL JONES

"Russ" "Jonesie"

Home Room Director 2, 4
Track 3, 4



RICHARD F. JOYNT

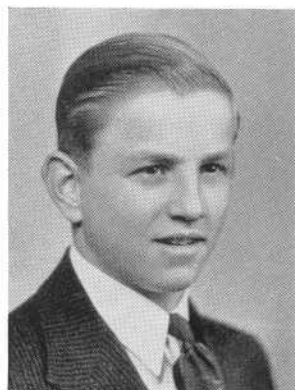
"Dick"



DOROTHY LARRAINE JUST

"Dot"

Chorus 2



STANLEY J. KAFEL

"Rabbit"



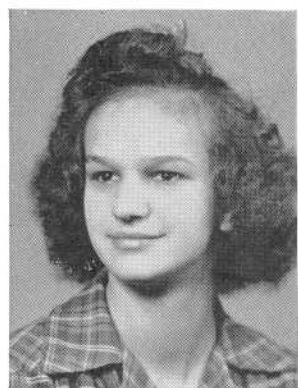
HELEN KALIL

Commercial Club 4



JOSEPH KALIL

"Joe"



MALWINA KAMINSKA

Commercial Club 4



JANET KAPITANOFF

"Kapi"

Girls' Glee Club 4
Mixed Chorus 3, 4



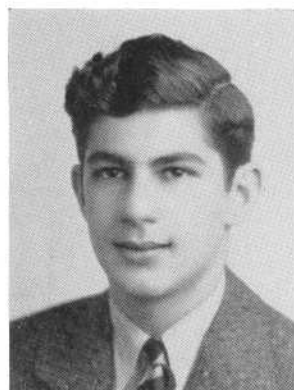
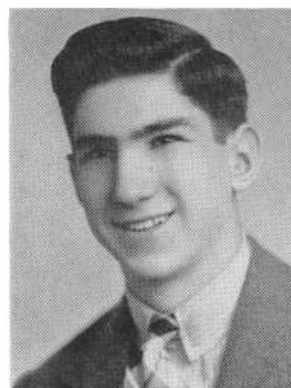
ALVIN KAPLAN

Orchestra 3, 4—Business Manager 4
Chorus 2, 3, 4
Band 3, 4 Boys' Glee Club 4
Home Room Director 3
National Honor Society 3, 4

SOLOMON KATZEN

"Sam"

Football 4
Track 2, 3, 4
Traffic Squad 2, 3, 4
2nd Lieut. 3—Captain 4
Varsity Club 4—Treasurer 4



GERALD KATZMAN

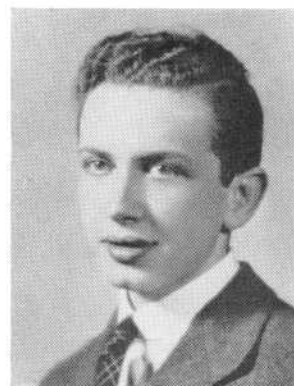
"Jerry"

Dramatic Club 3, 4—Property Mgr. 4
Thespians 4
Y.D.A. 4
Camera Club 1

LORRAINE KATZMAN

"Leya"

Forum 2, 3, 4
Health Club 2, 3—Vice Pres., 2, President 3
Dramatic Club 3, 4—Costume Mistress 4
National Thespians 4
Commercial Club 4



IRVING H. KAUFMAN

Dramatic Club 4
Y.D.A. 4

LUCILLE VIRGINIA KEE

"Lou"

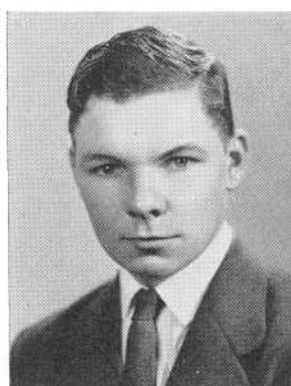
Commercial Club 4
Y.D.A. 4
Forum 3
Camera Club 4

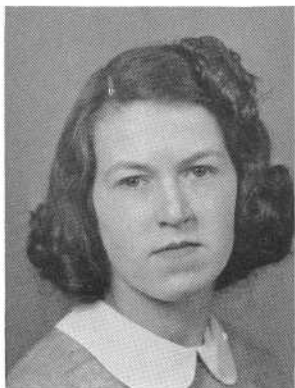


EILEEN C. V. KELLEHER

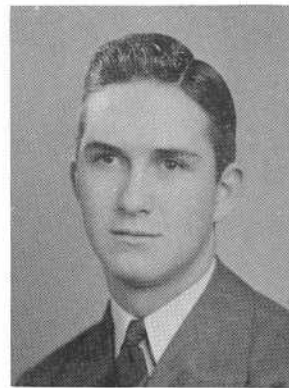
Home Room Director 2, 3

ROBERT KELLEY





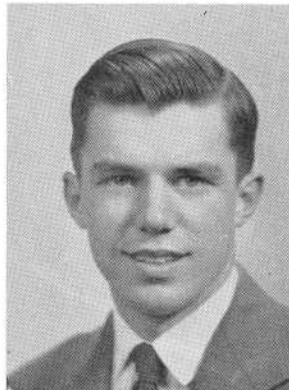
DOLORES M. KELLY
"Del"
Commercial Club 4



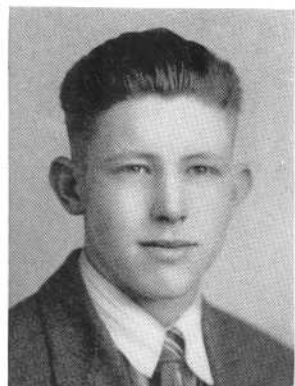
DONALD R. KELLY
"Don" "Kel"



GEORGE R. KELLY
"Kel"



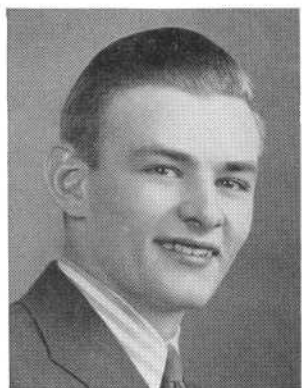
RALPH A. KENNEDY



JAMES FRANCIS KENYON
"Jim" "Red" "Ken"



RUTH MURIEL KESSELL
"Jr." "Kess"
Camera Club 4
Commercial Club 4
Mixed Chorus 2, 3, 4
Girls' Glee Club 4



KENNETH RICHARD KILEY
"Ken"
Home Room Director 4
Football 4
Varsity Club 4
Commercial Club 4



LESLIE KIRKER
"Les"
Chorus 4



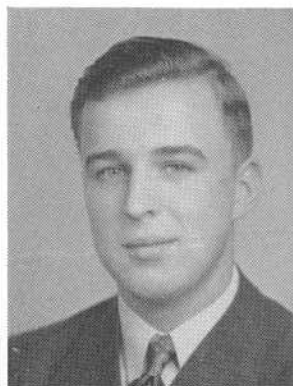
DOREATHA M. KOEHLER
"Dot"



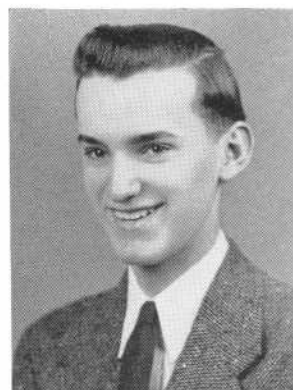
IRENE KOGUT
 Commercial Club 4



JANE MARIE KOZEL
 Home Room Director 2, 3, 4
 Chorus 2
 Dramatic Club 4
 Camera Club 4



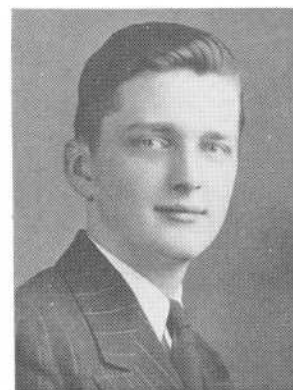
EUGENE KRECIOCH
"Gene"



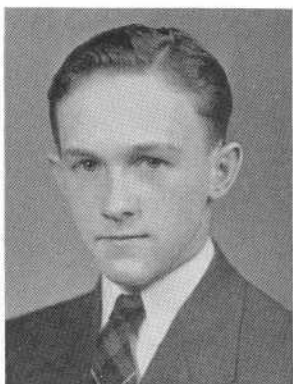
RAYMOND A. KRET
"Ray"
 Basketball 2
 Home Room Director 3
 Pin and Ring Committee 3
 National Honor Society 3, 4
 S.A.A. Council 4



KATHRYN C. KRUK
"Kay"



HENRY KRUPA
"Hank"
 Home Room Director 2
 Health Club Councillor 2
 Flying Squadron 3
 Commercial Club 4



JOSEPH A. KULPA
"Joe" *"Pop"*
 Home Room Director 1



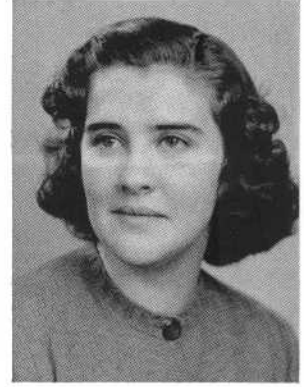
JOSEPH EDWARD KULPA
"Ed"



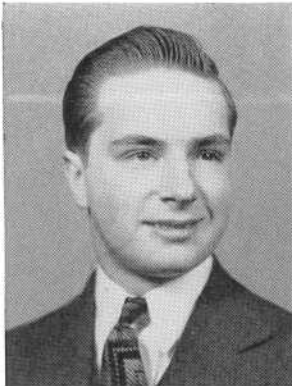
ANN B. KUSS
Commercial Club 4
Home Room Director 2



FRANK LACAVA
"Link"



CONSTANCE M. LACHANCE
Library Aid 3, 4
National Honor Society 3, 4



OVILA J. LAFORREST



LOUISE ADRIENNE LAJOIE
"Mowsie"



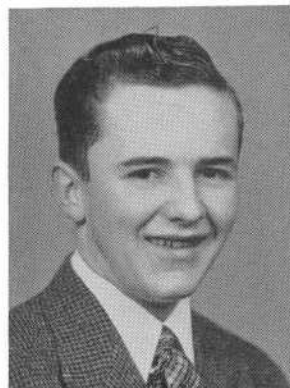
F. SHIRLIE LALIME
"Kid"
Home Room Director 4



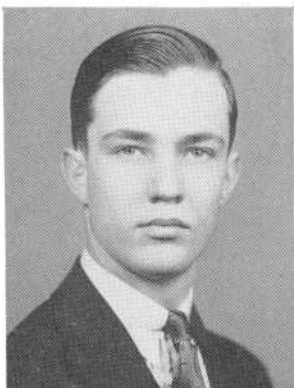
APHRODITE LAMBROS
"Dolly"



ALAN B. LANCASHIRE
"Lanky"



ARMAND L. LANCIAULT
"Willie"



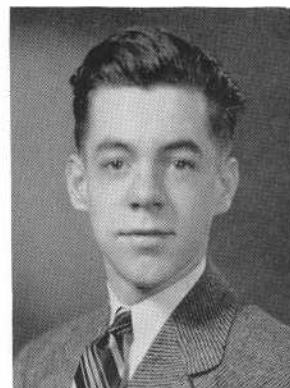
LEO J. LANGFIELD
"Lee"
National Honor Society 3, 4
Home Room Director 4



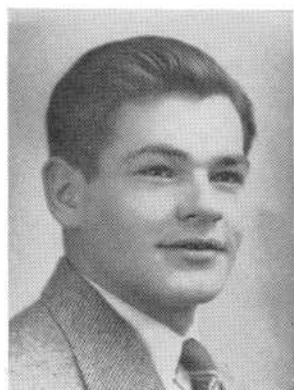
CLAIRE LAPOINTE
Commercial Club 4
National Honor Society 3, 4



JEANNE LA ROCHE
"Jeanie"



GEORGE THOMAS LEACH JR.
"Leachie" "Georgie" "Shortie"
Y.D.A. 4
Home Room Director 2



EDMUND LEANDRO
Football 1, 2, 3, 4—Captain 4



MABEL LOUISE LEATHER
Aid in Infirmary 2, 3, 4
Health Club 2



WILLIAM LEAVER
"Bill"



EVELYN L. LECOMTE
Commercial Club 4



ADRIEN G. LEDUC
"Duke"



ELMER LEIGH JR.
"El"
Home Room Director 1, 3
Senior Gift Committee 4



ARMAND G. LEMAIRE



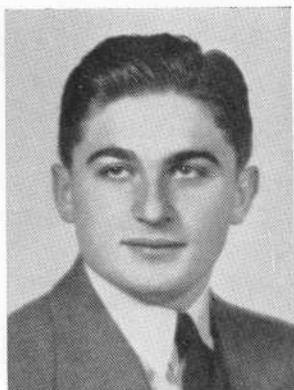
GILBERT P. LEMAIRE
"Gil"



RITA J. LEMIEUX
Orchestra 2
Mixed Chorus 2, 4
Girls' Glee Club 4



JEAN B. LEVESQUE
Y.D.A. 4

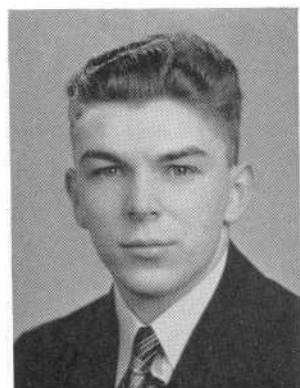


MARVIN LEVIN
Dramatic Club 3, 4
Thespians 4
Tennis 3, 4—Captain 4
Y.D.A. 4

MIRIAM JUNE LEVIN

"Mir" "Boots"

Dramatic Club 3, 4—Recorder 4
Thespians 4
Orchestra 4
Health Club Upper Councillor 2



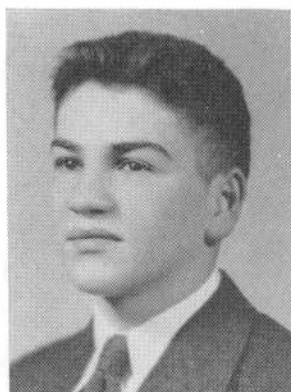
CLIFFORD LEWIS

"Cliff"

Home Room Director 4

AUDREY LIGHTBODY

"Blue Eyes"



ALBERT LIPSHITZ

Basketball 2, 3

ARLINE LISCHNER

"Lish" "Arl"

Commercial Club 4



EDWARD D. LITTLE

"Ed"

DOROTHY ANN LIVESEY

"Dot"

Commercial Club 4
Home Room Director 4
Dance Committee 4
Health Club Councillor 2





HELEN FRANCES LOFTUS
Home Room Director 3



JOSEPH T. LOGAN
"Joe"



THEODORE LOIKA
"Teddy"



HELEN LOIKO



FLAVIA E. LOPES



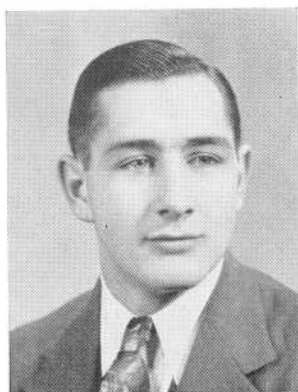
MARY LOPES
"Sugar" "Red"
Home Room Director 2, 3
Health Club Councillor 2
Commercial Club 4
Literary Club 2



MARIE C. LOPOULOS
Health Club Councillor 2



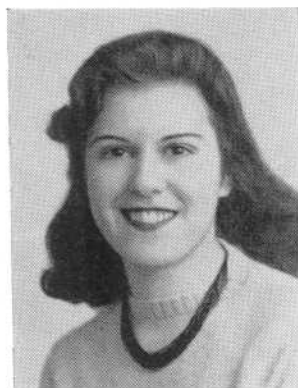
FOSTER RAYMOND LOWENTHAL



FRANCIS R. LYNCH
"Wildeman"



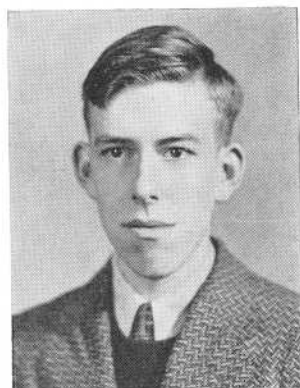
RUTH LYNN
"Ruthie"



DIAMENTINA MACEDO
"Diman"



GLORIA JEAN MACRI



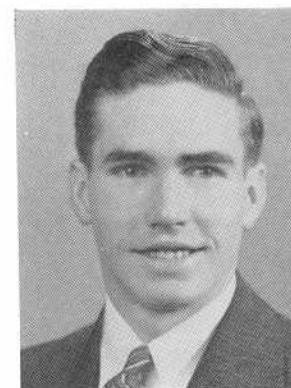
JAMES MAGUIRE
Home Room Director 2, 3
Hilltop Staff 4



ESTELLE C. MANCHESTER



ELEANOR MARGARIDO
"Margo"
Home Room Director 1



KENNETH FRANCIS MARTIN
"Ken"
Y.D.A. 4



MARJORIE ELAINE MARTIN

— "Marge" "Margie"



MARGARET MATTOS

"Peggy"
Health Club Councillor 2
Commercial Club 4



IRENE KATHERINE MATWEJKO

"Cuddles" "Chubby"
Dramatic Club 3, 4
Thespians 4
Literary Club 3, 4
Commercial Club 4



BENJAMIN MAZUREK

"Ben"



STANLEY MAZUREK

"Shorty"



JEANNE E. MCARTHUR

"Jeanie"



ROBERT F. MCCONNELL

"Mick"



CLAIRE COLBY MCCREERY

"Colby"
Home Room Director 2



GEORGE McCULLOUGH
"Mac"



RITA McCULLOUGH
"Mac"



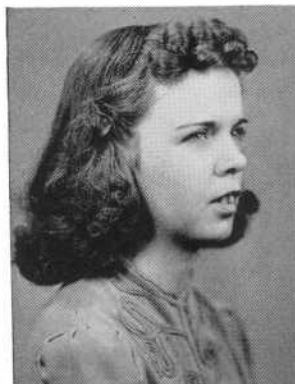
MARTIN THOMAS MCGOWAN
"Mac"



WILLIAM MCGRADY
"Mac"
Y.D.A. 4



RAYMOND M. MCGUIRE
"Mickey"
Home Room Director 3



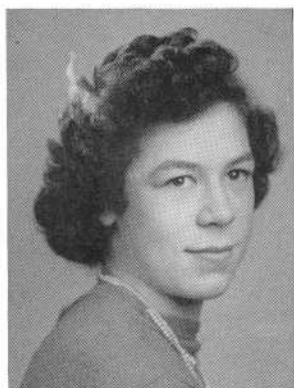
VERONICA MCGUIRE
"Vee"



MARGARET J. MCKNIGHT
"Peg" "Mac"
Literary Club 4



RICHARD B. MCMURRAY
"Dick"
Home Room Director 2—President 4
S.A.A. Council 4



HENRIETTA MEDEIROS
"Etta"



DOROTHY MEGNA
"Dot"
 Commercial Club 4
 Camera Club 4



BEATRICE FELIX MELLO
"Felix"
 Commercial Club 4



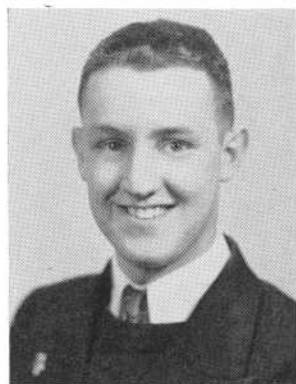
DELTA ARLEAN MELLO
"Dell"
 Orchestra 1, 2
 Junior Chorus 3



EUGENE MELLO
"Gene"



EVELYN C. MELLO
 Commercial Club 4



JOSEPH E. MELLO
"Pat"
 Home Room Director 2
 National Honor Society 3, 4



NATHALIE S. MELLO
"Nat"
 Home Room Director 2, 3
 Chorus 2, 3, 4
 National Honor Society 3, 4
 Mellow Trio 4



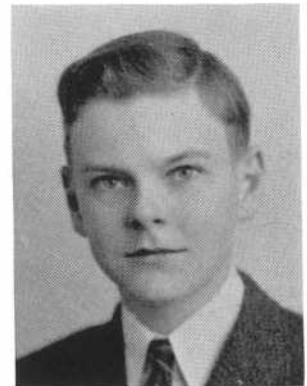
MARY LOU MENDES
"Lou"
Health Club Councillor 2, 3



LAURA MARIE MICHAEL
Chorus 4
Girls' Chorus 4



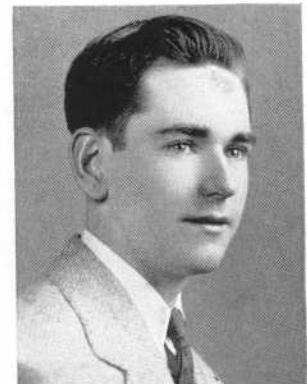
WANDA S. MICHALEWICH
Commercial Club 4



ALBERT J. MICHAUD
"Al"
Office Aid 2



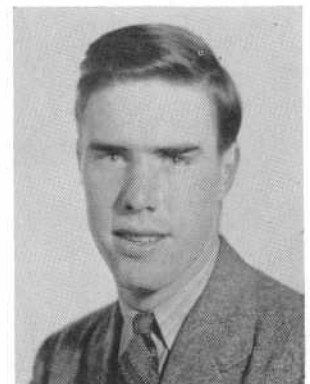
STANLEY P. MIKOLAZYK
"Mike"



PATRICK EDWARD MILLER
"Pat"



PHILOMENA MIRRA
"Phil"



ROBERT EDWARD MITCHELL
"Bob" "Mitch"
Electrical Club 3, 4

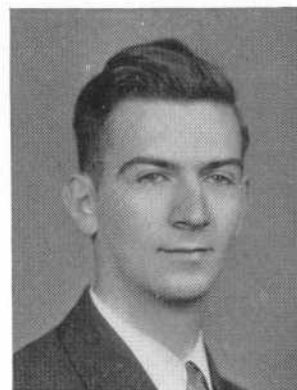


NINA MOCEUK

"Ni"

Commercial Club 4

Camera Club 3—Secretary 4



JOHN MODA

"Johnny"



RAYMOND MARK MONSOUR

"Mony"



ROBERT E. MOONEY

"Bob"

Office Aid 4



THOMAS E. MORAN

"Tommy"



MARGARET MARY MORGAN

"Peg"

Commercial Club 4



JERALD MORGANSTEIN

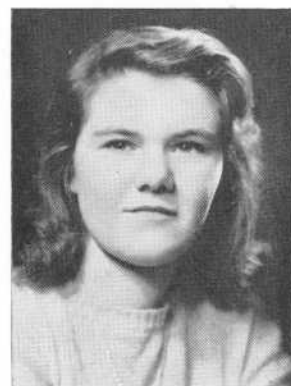
"Jerry"

Basketball 3, 4

Varsity Club 4

Dramatic Club 4

Y.D.A. 4



GLADYS LOUISE MORLEY

"Lou"

Home Room Director 3

Health Club Councillor 2

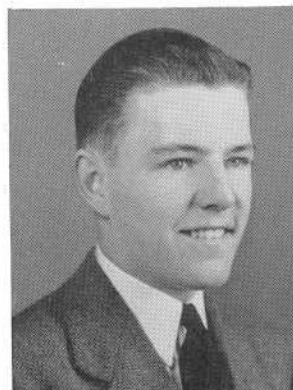
Senior Dance Committee 4



GLORIA MARY MORRIS

"Blondie"

Mixed Chorus 4
Girls' Glee Club 4



ROBERT ANTHONY MORRIS

"Bob"

Basketball 2, 3, 4
Varsity Club 4—President 4
Gift Committee 4



CLAIRE RITA MORRIS

"Chrissy"

Dramatic Club



MARY LOUISE MORRIS



BEATRICE L. MORRISSETTE

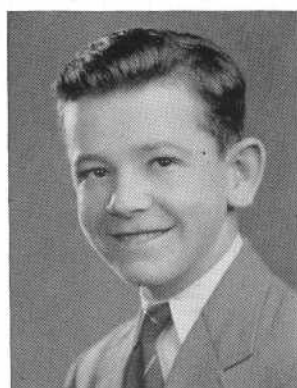
"Beattie"

Commercial Club 4



JOSEPH P. MORRISSEY

Commercial Club 4
Sanco Club 2, 3



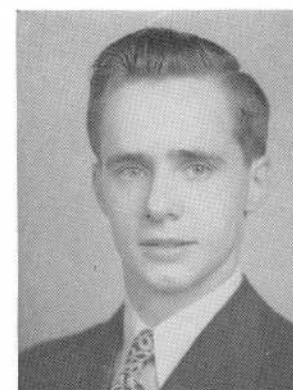
RICHARD ROY MULCAHY

"Dick"

LAWRENCE MUELLER JR.

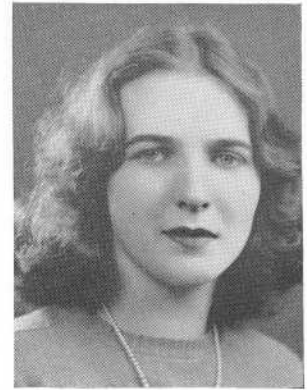
"Larry"

Vice President of Class 4
Chorus 2, 3, 4—President 4
Orchestra 3 Band 3
Dramatic Club 3, 4 Thespians 4
Health Club 2, 3 Pin & Ring Com. 3, 4
Boys' Glee Club 4—"Noted Four" Quartet 4
Home Room Director 2, 3
National Honor Society 3, 4





GERTRUDE ELEANOR MULLEN



GERTRUDE HELEN MULLEN

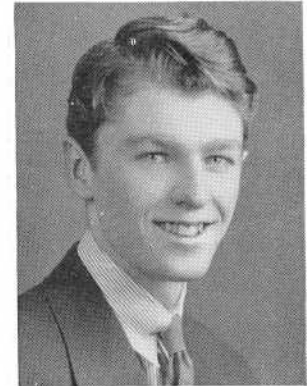
"Mul"

Traffic Squad 2
Commercial Club 4



ANNE ELIZABETH MULLINS

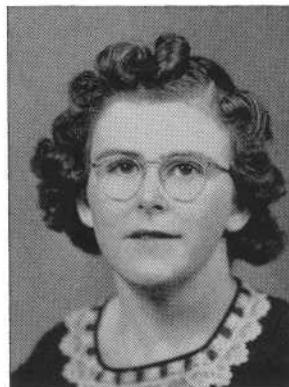
Secretary of Class 4
Commercial Club 4
Dramatic Club 4
Camera Club 4



JOHN NEIL MUNRO

"Tex" "Red"

Football 4
Varstiy Club 4—Vice President 4



CATHERINE MURPHY

"Cafy" "Murph"



GRACE ELINOR MURPHY

"Gracie"

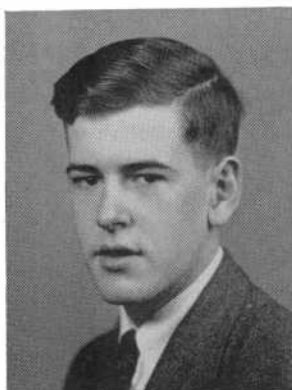


KENNETH MURPHY

"Ken"



MARION LOUISE MURPHY



JOHN GRAHAM MURRAY

"Sunny"



MARJORIE MAE MURRAY

"Margie"

Commercial Club 4—President
National Honor Society 4



VIRGINIA MAY MURRAY

"Ginny"

Commercial Club 4
Home Room Director 4
Health Councillor 2



EDWARD A. MYLES

"Miggles"

Office Aid 3, 4
Ass't. Editor Record Book 4
Home Room Director 3



FLORENCE NADIEN

"Flo" "Iris"

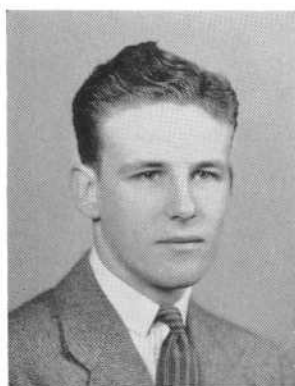
Orchestra 2, 3, 4—Concert Master 2, 3, 4
Chorus 3, 4
National Honor Society 3, 4
Dramatic Club 3, 4—Thespians 3, 4—Treas. 4
Gift Committee 4
Girls' Glee Club



KENNETH LAWRENCE NATHANSON

"Ken"

Band 1, 2, 4
National Honor Society 3, 4



WILLIAM NELSON

"Bill"

Football 2
Basketball 2, 3
Baseball 3
Varsity Club 3



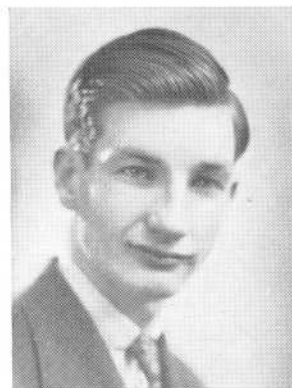
MURIEL LAURA NOISEUX

"Noisy"

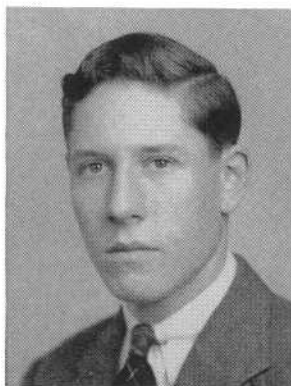
Health Club Councillor 2
National Honor Society 3, 4
Commercial Club 4
Home Room Director 1



IDA ELIZABETH NORTON
Chorus 3, 4—Librarian 4
Chairman Advisory Board Senior Class 4



RAYMOND NORTON
"Ray"



HENRY SUMNER NOWELL JR.
"Hen" "Hank"
Electrical Club 4



EDITH SELMA NULMAN
"Edie"
Commercial Club 4
Dramatic Club 4



GEORGE L. O'BRIEN
"O'B"
Band 4



BARBARA ROSE O'CONNELL
"Babs"
Home Room Director 2, 3, 4
Secretary of Sophomore Class
S.A.A. Councillor 3, 4
National Honor Society 3, 4
Library Aid 3



RUTH GERTRUDE ODDIE
"Ruthie"
Health Club Councillor 2
Camera Club 2, 3, 4
Treasurer 2, Vice President 3
Y.D.A. 4



BEATRICE O'DRISCOLL
"Trixie"
Cheerleader 3, 4
Health Club Councillor 3
Home Room Director 2
Dramatic Club 4



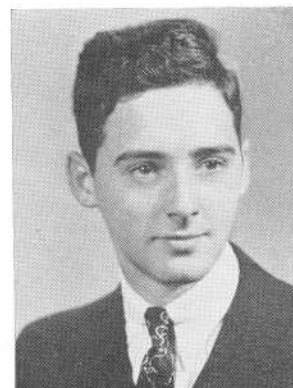
MARY OLIVEIRA



SAM OLIVER
"Sam" "S O 2"
Home Room Director 1



WINIFRED MARY O'MARA
"Winnie"
Forum 4



PAUL F. O'NEIL



CONSTANCE ORMEROD
"Connie"
Commercial Club 4
Literary Club 4



FRANK OSBALDESTON JR.
"Ozzie"



CLAIRE O'TOOLE
Commercial Club 4



ANTONE PACHECO
"Tony"



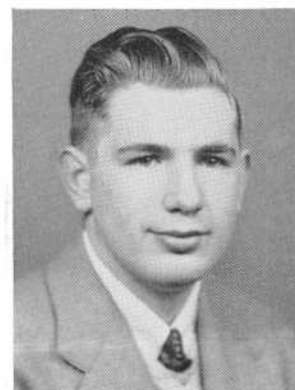
NORMAN WILLIAM PADDEN
Home Room Director 3, 4



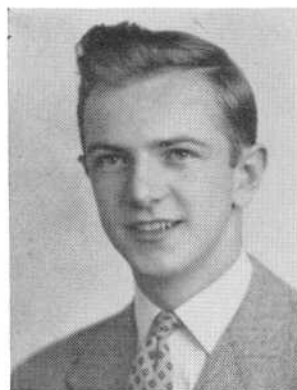
ALLEN PADELFORD
"Paddy"
Band 3, 4
Orchestra 4



JUANITA PAGELS
"Nita"



RICHARD PAQUETTE
"Dick"
Sanco Guild 2, 4



WILLIAM PARKER
"Bill"



FRED PARKINSON JR.
"Parky"



RUTH PARKINSON
"Parky"
Dramatic Club 4
Thespians 4



SHIRLEY JANE PARTINGTON
"Blondie"
Commercial Club 4
Chorus 3
Home Room Director 2



JANET RUTH PEARCE

"Jan"

Forum 4

ISABELLE GERTRUDE PEARSON

"Izzie" "Pearsie"

Library Aid 4

National Honor Society 3, 4—Secretary 4

Forum 3

Chorus 4



GLORIA JAYNE PECK

"Peckie"

Health Club Councillor 2

Y.D.A. 4

Chorus 4

Glee Club 4

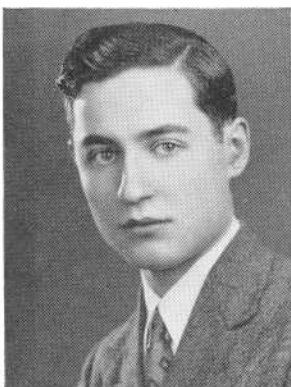
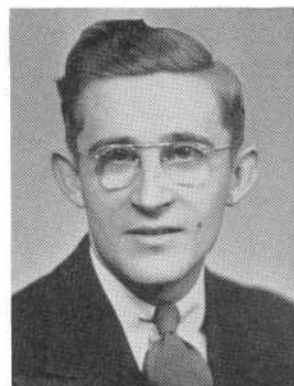
RAYMOND L. PELLETIER

"Ray"

Health Club Councillor 3

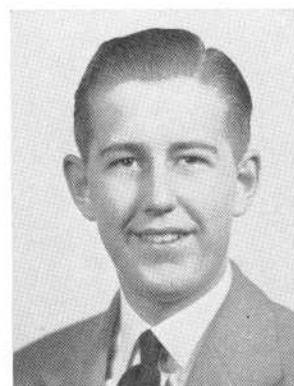
Vice President of Junior Class 3

Pin and Ring Committee 4



FERNANDO C. PEREIRA

PAUL THOMAS PERKINS



STANLEY PERRY

"Stan"

JOHN D. PETTINE

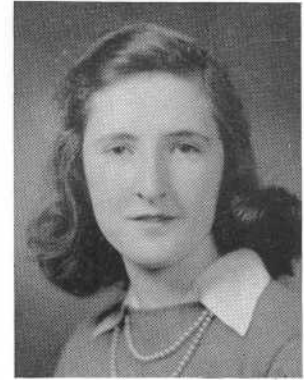




MILDRED PETTINE

"Millie"

Home Room Director 2
Orchestra 3, 4
Chorus 2, 3, 4
Girls' Glee Club 4
Advisory Council 4



BARBARA W. PHILLIPS

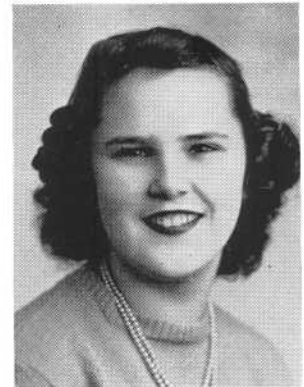
Literary Club 2
Y.D.A. 4



VIOLA MARIE PICHE

"Vi"

Home Room Director 3
Commercial Club 4



HELEN M. PIERCE

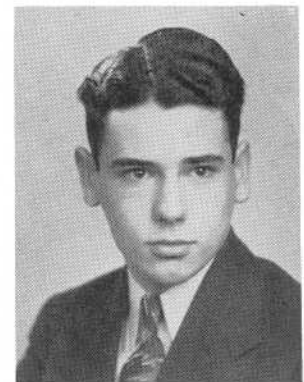
Commercial Club 4



PHYLLIS BARBARA PIERCE

"Phil" "Cookie"

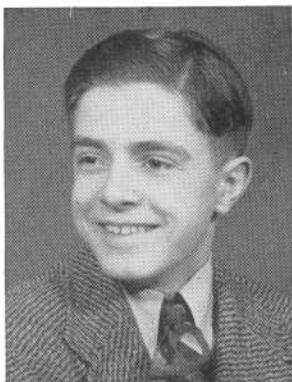
Girls' Glee Club 4



ALBERT PIMENTAL

"Al" "Pep"

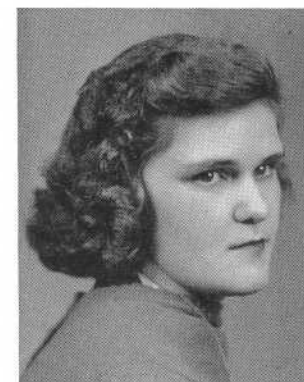
Traffic Squad 2, 3
Camera Club 3, 4
Dramatic Club 4
Hilltop Staff 4



DANIEL R. PIMENTAL

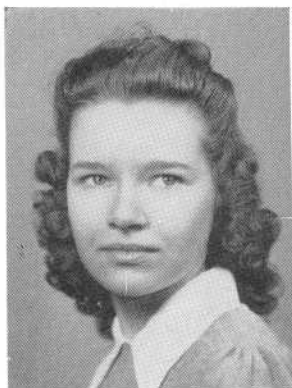
"Dan"

Dramatic Club 3, 4
Thespians 4



JANE PIROG

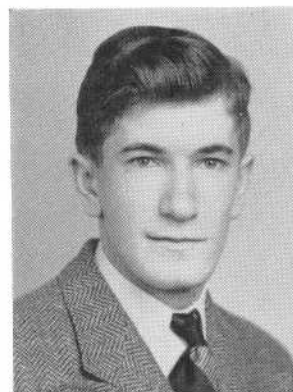
"Janey"



STASIA THEKLA PITERA

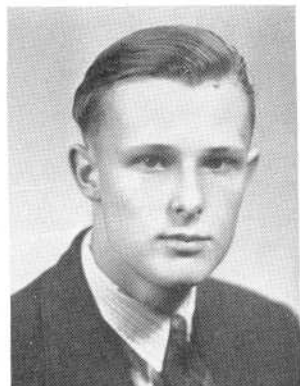
"Tykie"

Commercial Club 4
Camera Club 4



FRED PLASSKI

"Fred"



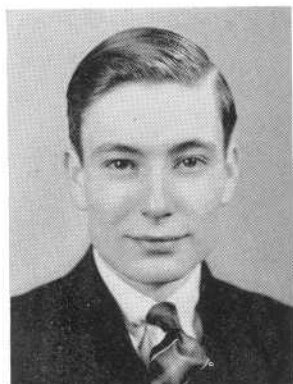
JOHN ALYN PLATT

"Al"



FRANCIS S. PLICHTA

"Franny"



ANTONIO R. PORTELLA

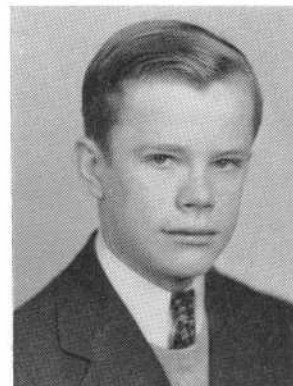
"Tony"



ROSE POSNICK



LUCY B. POTVIN



GEORGE POWERS

"Red"

Health Club 2



HERVEY PRATT

"Hershey"

Office Aid 2, 3, 4
Vice President 3



GRACE S. PRESCOTT



HELEN E. PREZALAR

Commercial Club 4



MINNIE PRIBUTSKY

"Min"

Dramatic Club 4
Forum 3

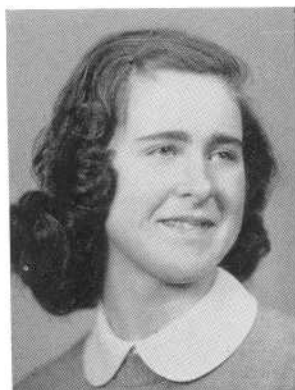


GLADYS PRIESTNER



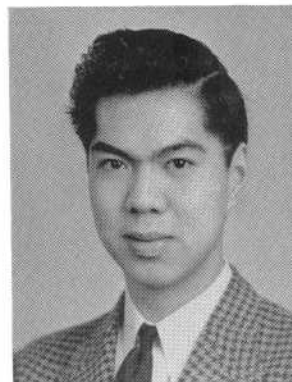
AMELIA PRZYBYLA

National Honor Society 3, 4
Commercial Club 4
Home Room Director 1
Literary Club 3, President 4



JANE ELLEN QUINN

"Quinny"



FRANK MOY QUONG



HELEN ESTELLE RACHLIN

"Jinx" "Rachie"



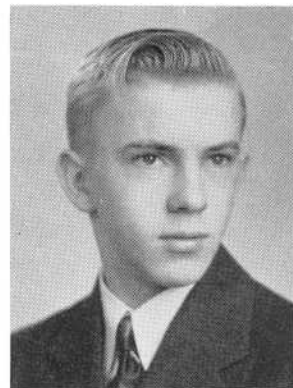
GERALDINE RADCLIFFE

"Gerry"

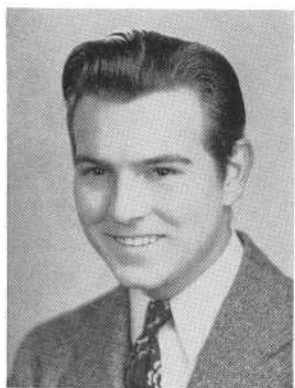


SAUL RADOVSKY

Thespians 4
Dramatic Club 3, 4
Y.D.A. 4



WALTER RAK

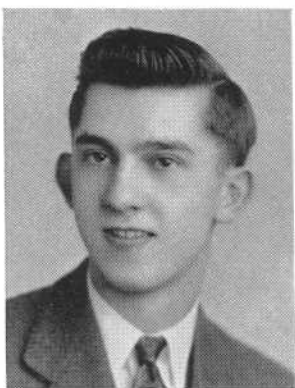


PETER RAMUT

"Pete"



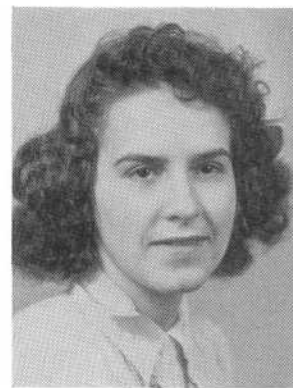
MARY RAPOSA



WILLIAM CLAYTON RAPOSA

"Bill"

Home Room Director 1, 3, 4
Hilltop Staff 4
Health Club Councillor 2
Commercial Club 4 Y.D.A. 3, 4
Flying Squadron 2, 3, 4
Sergeant at Arms 3, Vice President 4

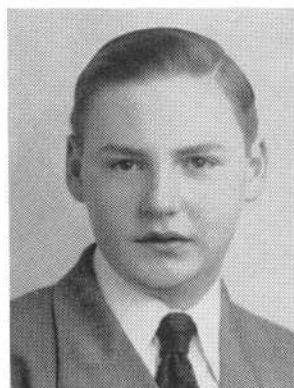


GLADYS RAY



ANNE REAGAN

"Nan"



GEORGE R. REAGAN

"Jubber"

Dramatic Club 3, 4



GLENNA ARLEEN REBACK

Orchestra 3, 4—Librarian 4

Chorus 3, 4

Girls' Glee Club 4

Home Room Director 3

Y.D.A. 4



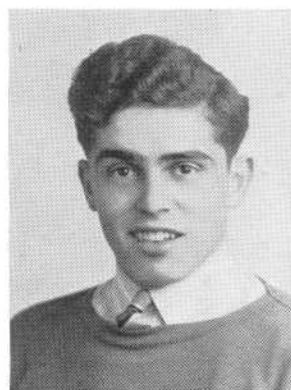
CARLTON WILLIAM REED

"Corkey"

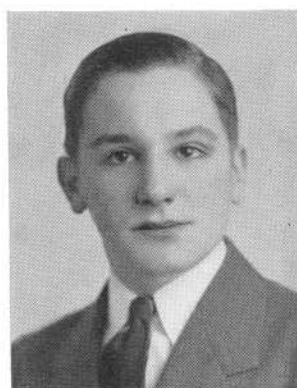


JOHN B. REED

"Johnny"



NORMAN REIS



ROBERT HERVE REMY

"Bob"

MARY JEAN RICHARDSON

"Ricky"

Home Room Director 2

Dramatic Club 3, 4—President 4

Thespians 3, 4

Literary Club 3

Commercial Club 4





RUTH MYRTLE RIDGE

"Myrt"

Mixed Chorus 4
Girls' Glee Club 4



ELEANOR M. RILEY

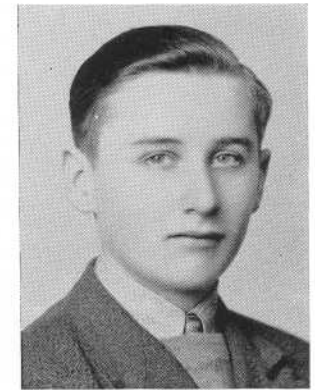
"Ele"

Library Aid 2, 3, 4—President 3, Secretary 4
National Honor Society 3, 4
Home Room Director 4
Advisory Committee 4
Ass't. Editor Record Book 4



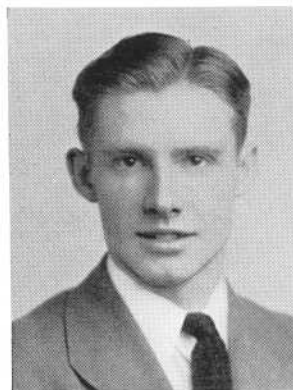
HERMAN F. RILEY

Office Aid 3, 4
Health Club Councillor 3
Debating Club 2



MAURICE L. RIOUX

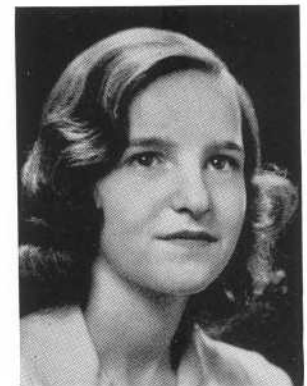
Office Aid 4
Home Room Director 3



NORMAN L. RIVARD

"Norm"

Basketball 1, 2, 3—Captain 4
Varsity Club 2, 3, 4



BETTY LOU RIVERS

"Louey" "Bet"

Y.D.A. 4



CLAIRE PATRICIA ROACH

Home Room Director 3
Hilltop Staff 4
Advisory Board 4



KATHERINE PATRICIA ROBERTS

"Kay"

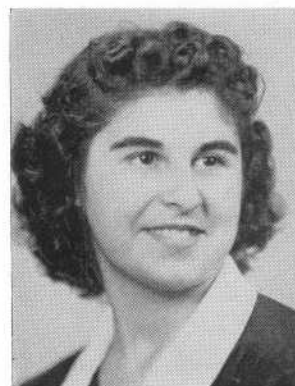
Dramatic Club 4
Glee Club 4
Literary Club 4
Chorus 4
Dance Committee 4



RITA ROBERTS

"Pat"

Home Room Director 3
Commercial Club 4



AMELIA MARIA ROCHA

"Amy"

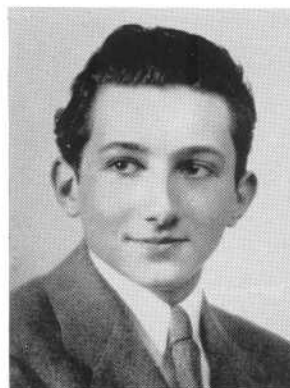
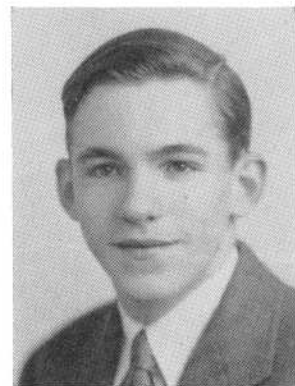


ANN ROCKCLIFFE

JOSEPH M. ROCKETT JR.

"Joe"

Basketball 2, 4
Varsity Club 4



DAVID ROCKLIN

"Dave"

Dramatic Club 4
Y.D.A. 4



EDITH RODERICK

"Eadie"



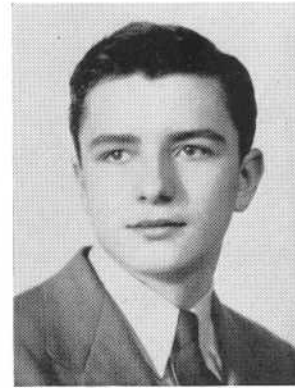
MARILYN MILDRED ROTHWELL

"Mac" *"Min"*

THOMAS HARRY ROUGAS

"Tom"

Dramatic Club 3, 4
Thespians 4
Home Room Director 4

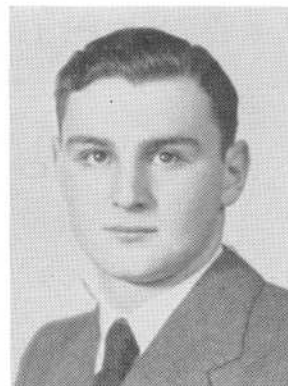




SHIRLEY RUBIN

"Shirl"

Dramatic Club 4



DONALD IRVING RUBINSTEIN

Dramatic Club 3, 4

Thespians 4

Track 2, 3, 4

Y.D.A. 4



EDNA SABER

ALBERT ST. AMOUR

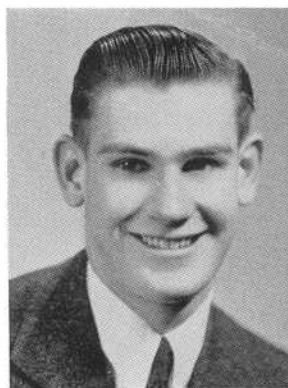
"Gus"

Football 2, 4

Basketball 2, 3, 4

Baseball 3, 4

Varsity Club 3, 4



LUCILLE ST. AMOUR

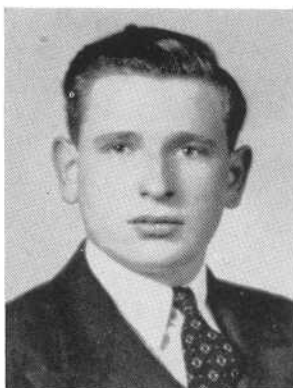
"Lu" "Butch"

Home Room Director 2, 4

Health Club Councillor 2



RENE R. ST. ONGE



HILTON SALHANICK

Library Aid 2, 3, 4

National Honor Society 3, 4

Forum 1, 2

Camera Club 1

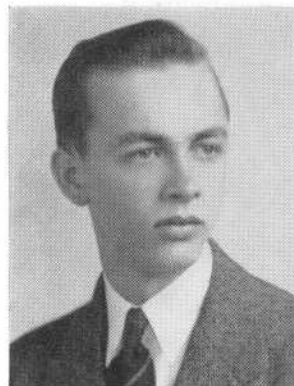


ELIZABETH ANNE SAMPLE

"Betty"



GEORGE SANDLER
"Sandy"



EDWARD J. SANOCKI
"Eddie"
Orchestra 2, 3, 4
Chorus 3
Band 3
Concert Master 3



JEANNINE SAVOIE
"Jean"
Camera Club



PHYLLIS K. SAYWARD
"Hoof"
Aid in Infirmary



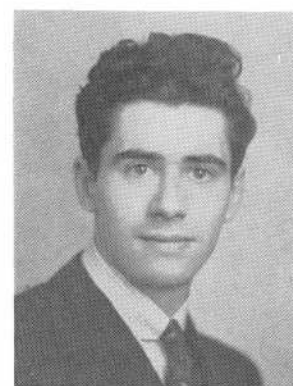
MARY L. SBARDELLA
Girls' Glee Club 4
Mixed Chorus 3, 4



THELMA FLORENCE SCHARSTROM
"Thel"



NORMA SANDRA SCHILLER
"Sandy"
Dramatic Club 4
Forum 2
Y.D.A. 4
Thespians 4



FRANCIS J. SCOTT
"Scotty"
Flying Squadron 2, 3, 4
Treasurer 2, Secretary 3, President 4
Traffic Squad 2, 3, 4—2nd Lieut. 4
Home Room Director 2



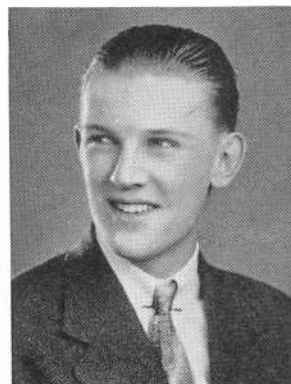
PHILIP SHAKER



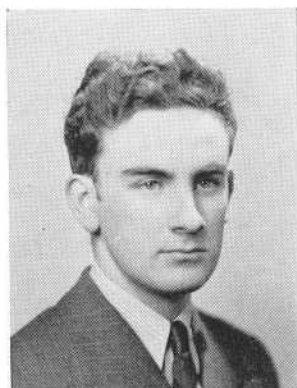
EDWARD K. SHEA
"Ed"
Camera Club 3—President 4



GRACE SHEA
Traffic Squad 2
Home Room Director 2, 3
Commercial Club 4—Vice President



MATTHEW ANDREW SHEA JR.
"Matt"
Electrical Club 3
Office Aid 4
Baseball 3—Manager 4



ROBERT R. C. SHEA



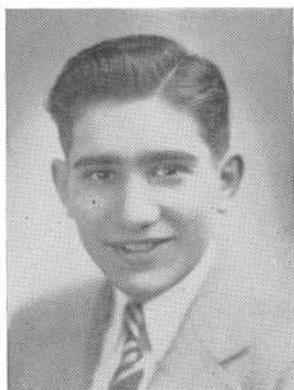
RUTH VIRGINIA SHERLOG
"Ruthie"
Hilltop, Editor-in-chief 4
Literary Club 2, 3, 4—Secretary 3
National Honor Society 3, 4



EDWARD ABRAM SHULTZ
"Ted"



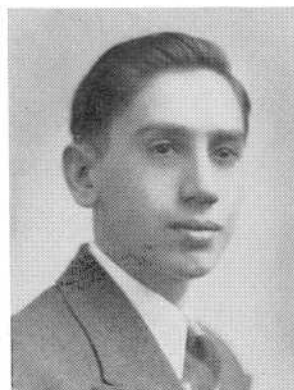
ARLINE SHIRLEY SIGAL
"Si"
Forum 1, 2, 3



ARTHUR SILVA
"Art"



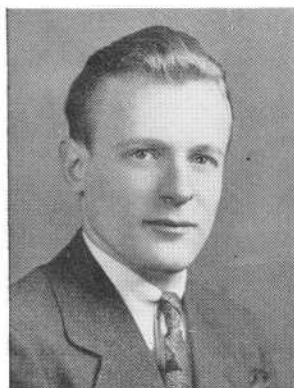
CECILIA SILVIA



LOUIS SILVIA
"Louie"
Traffic Squad 2
Home Room Director 3
Commercial Club 4



CLAIRE SIMARD
"Frenchy"



CHARLES LEONARD SIMMONS



MARGARET SIMONS
"Peggy"
Cheerleader 3, 4
Dramatic Club 3, 4—Call Girl 4
Thespians 3, 4—President 4
Commercial Club 4



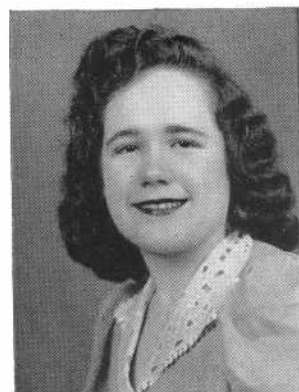
EDWARD SIMONETTI
"Red"



DOROTHY SISSON
"Dot"
Home Room Director 2, 4
S.A.A. 2—Secretary 2
Commercial Club 4



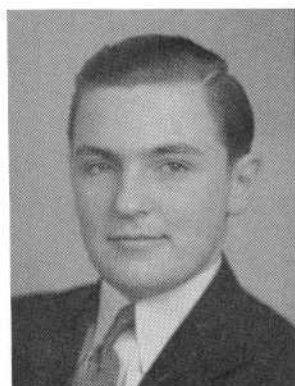
RUTH SLAIDING
"Ruthie"



ELAINE MAY SMITH
"Smitty"



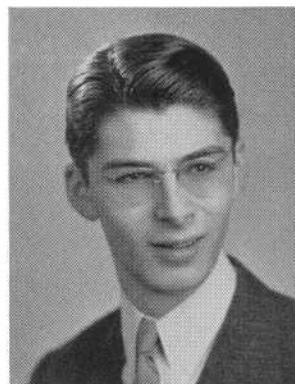
GLORIA SMITH
Health Club Councillor 2
Home Room Director 3
Commercial Club 4—Secretary
Senior Dance Committee 4



JOHN P. SMITH
"J. P."
Orchestra 4
Band 3, 4
Student Conductor of the Band 4



MARY ELIZABETH SMITH
"Betty"



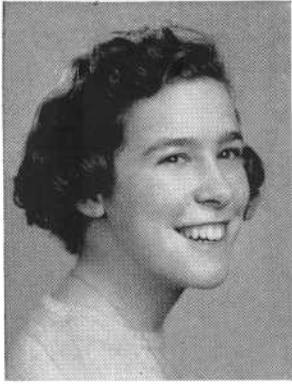
FRANCIS B. SOKOLL
"Fishy" "Dutch"
Hilltop Sports Editor 4



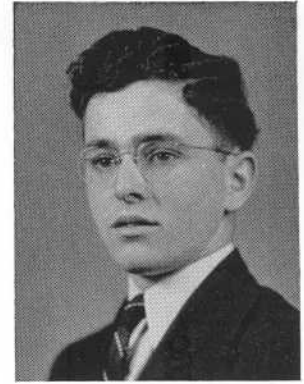
FRANCES SOLOTIST
"Fran"
Dramatic Club 3, 4
Forum 3
Y.D.A. 3



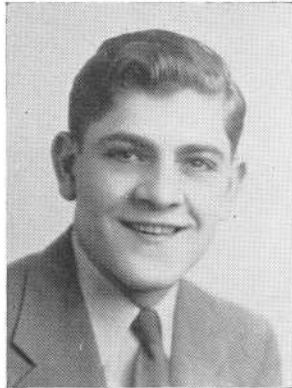
ELIZABETH SOULIER
"Betty"



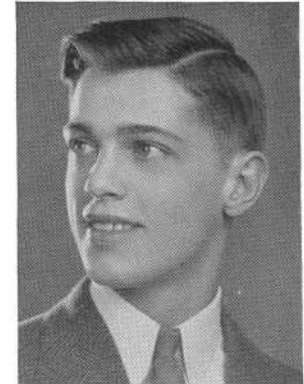
CATHERINE SOUZA
"Kitty"
Commercial Club 4



FRANCIS JOSEPH SOUZA
Y.D.A.



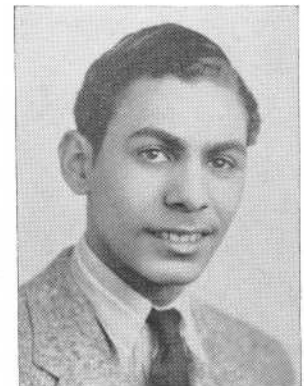
G. DONALD SOWERSBY
"Duck"
Band 2, 3, 4



JOHN F. SPARKS
"Sparky"



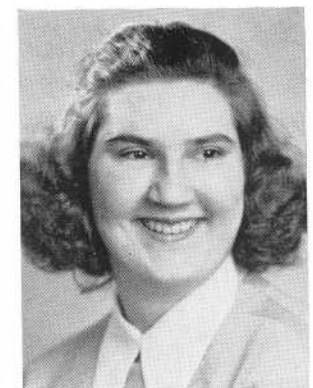
RICHARD SPENCE
"Dick"
Home Room Director 2, 3
Library Aid 3



FERMINO SPENCER
"Spencer"
Home Room Director 2



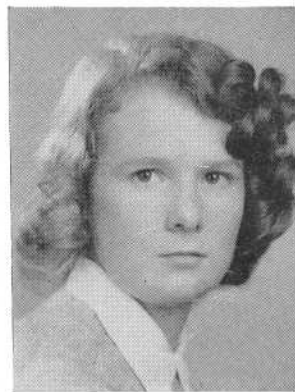
GENEVIEVE C. SPERDUTY
"Vivie"
Commercial Club 4



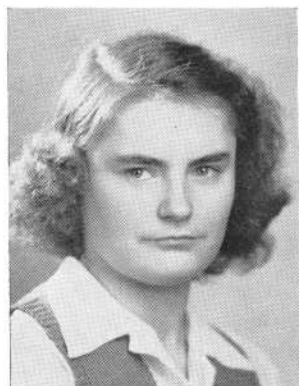
HELEN B. STAFIEJ
"Smiley"



THOMAS L. STANTON
"T"



CLAIRE JANYCE STAPLES
Hilltop Staff 4
Camera Club 3, 4
Commercial Club 4
Literary Club 4



ALICE A. SULLIVAN
"Sully"
Girls' Numeral Club—President 4
Vice President 3, Secretary 2
Basketball 2, 3, 4 Tennis 2, 3, 4
Softball 2 Volleyball 2, 3, 4
Honorary Member of Camera Club
Hilltop News Editor 4



DOROTHY LOUISE SULLIVAN
"Dot"
Home Room Director 3, 4
Gift Committee 4



JAMES H. SULLIVAN JR.
"Sully"
Basketball 2
Home Room Director 4



JOHN EDWARD SULLIVAN
"Sully"
Camera Club 3, 4
Electrical Club 3, 4



THERESE SULLIVAN



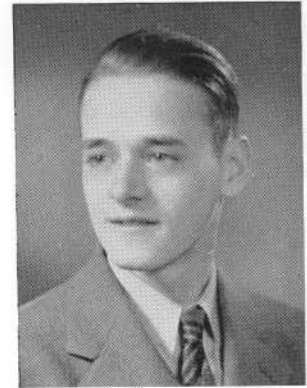
JEAN PAUL SURPRENANT
"Soupie" "Soup"
Commercial Club 4



WILLIAM A. SURPRENANT

"Supey"

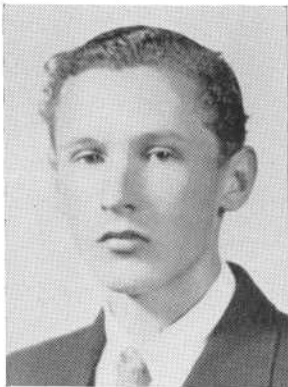
Traffic Squad 2
Health Club Councillor 2
Office Aid 3, 4



ARTHUR H. SWINBURN

"Swinny"

Band 3, 4



EDWARD SYPEK

"Eddie"



JOANNA SZPUNAR

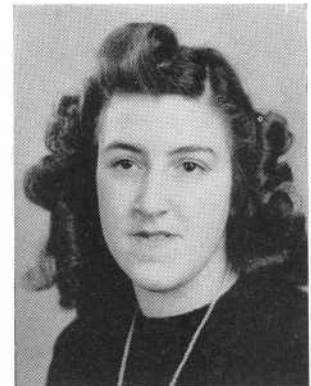
"Jo" "Dasical"

Commercial Club 4
Literary Club 3, 4



WARREN N. TACHE

"Tex"



HELEN LOUISE TACOVELLI



L. JACQUELINE TALBOT

"Jackie"

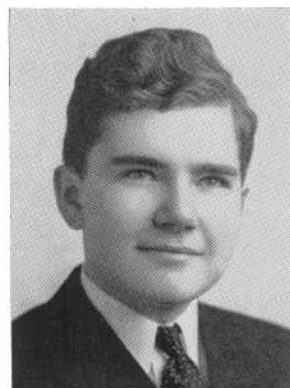
Dramatic Club 4
Literary Club 3
Commercial Club 4



GEORGE N. TAYLOR



LILLIAN TAYLOR
"Muffet"
Literary Club 3



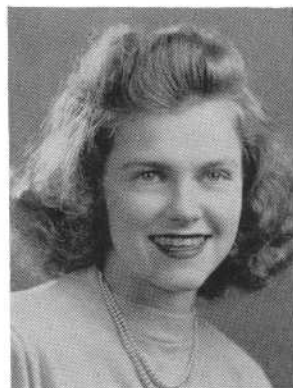
JOEL TERRY
National Honor Society 3, 4



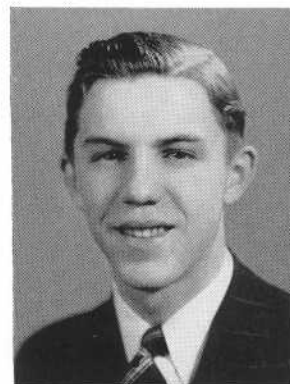
LILLIAN CYNTHIA TEVES
Commercial Club 4



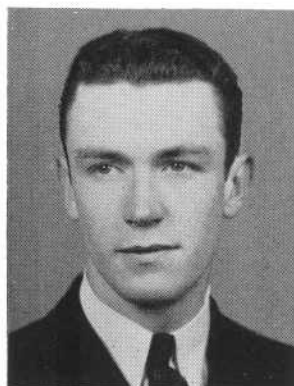
GERALDINE LOIS THIBEAULT
"Gerry"



AUDREY M. THURSTON
National Honor Society 3, 4
Health Club 2



WALTER L. TOKARZ
Home Room Director 3, 4



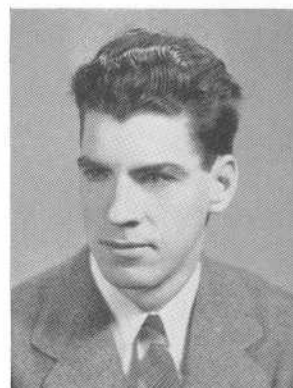
JOSEPH EDWARD TOOLE
"Joe"



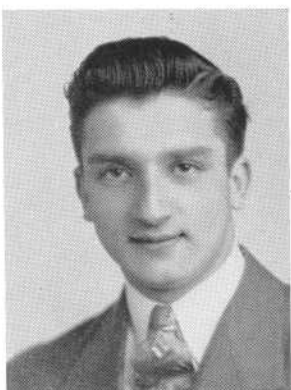
IRENE TORRES
"Rene"



LENA N. TOSIOR
"Lee"



ROBERT J. TOULAN
"Bob"



EDMOND TRINDADE
"Duke"

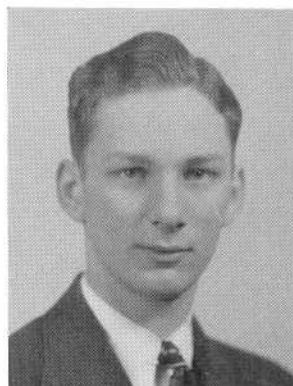


HAZEL MILDRED TRUST
Literary Club 2, 3, 4—Secretary 4
Hilltop Staff 4
Commercial Club 4
Camera Club 4
Pin and Ring Committee 4



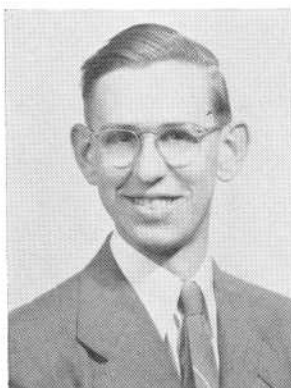
SUSAN DOROTHY TUREK
"Sue"

Camera Club 2, 3, 4
Chairman of Program Committee 4
Home Room Director 2, 3
National Honor Society 3, 4



MORRIS TWERSKY
"Moe"

Dramatic Club 3, 4—Fin. Sec. 4
Thespians 4
Home Room Director 1, 2
Orchestra 2
Camera Club 1
Chorus 2, 3 Forum 1



ARTHUR VANASSE JR.
"Art"

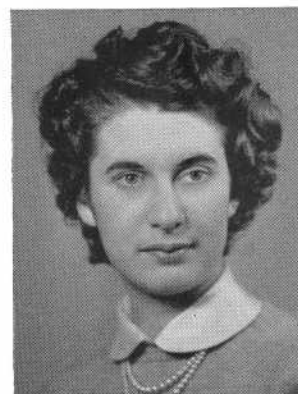


BERTRAM A. C. UDOVIN
"Wings" "Bert" "Scoop"
Dramatic Club 3, 4—Thespians 4
Flying Squadron 4
Hilltop Staff 4
Traffic Squad 1
Chorus 3, 4—Boys' Glee Club 4
Harmonious Hilltoppers 4



ALICE VICTORINE

Hilltop Staff 4—Business Manager
Literary Club 3, 4
Camera Club 4
Commercial Club 4



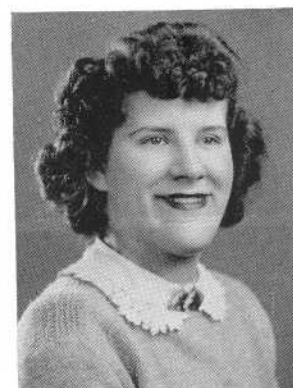
DORIS PATRICIA WALSH



FRANCIS AMBROSE WALSH

"Swab"

Home Room Director 2
Office Aid 2



JOSEPHINE WARGAT

"Jo"



EDWARD SAUNDERS WARING

"Ted"

Chorus 2
Home Room Director 3
Pin and Ring Committee 3
Y.D.A. 4—Vice President 4



BARBARA WARREN

"Barb"

Home Room Director 2, 3, 4
Chorus and Orchestra 2



RUTH WARREN



AMELIA J. WASIK

"Mickey"

Commercial Club 4



MARY ELLEN WATERMAN
Y.D.A. 3



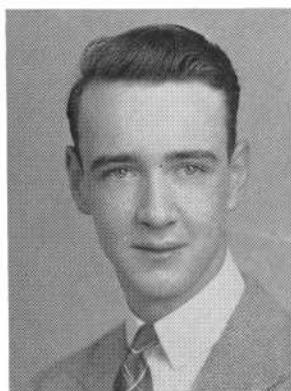
MARGARET ALTHEA WATKINSON
"Peg" "Peggy"



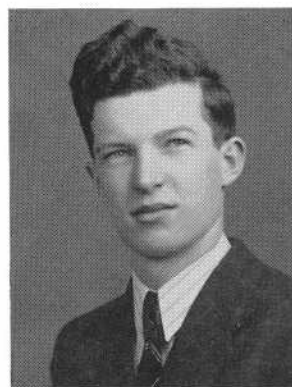
MARGUERITE WELCH
"Peggy"



HERBERT E. WEST
"Herbie" "Westy"



WILLIAM S. WHALEN
"Bill"



CHARLES WHITEHEAD
"Chuck"



ERNEST W. WHITTLE
Home Room Director 4



MARJORIE WILCOX



DOROTHY WILEY

"Dot"

Hilltop Staff 4
Literary Club 3, 4
Camera Club 4



BARBARA ANN WILKINSON

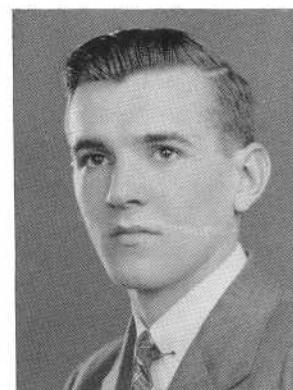
"Bob" "Wilkie"

Girls' Numeral Club 2, 3 4—Treasurer 3
Basketball 4
Volleyball 2, 4
Gym Leader 4
Traffic Squad 3



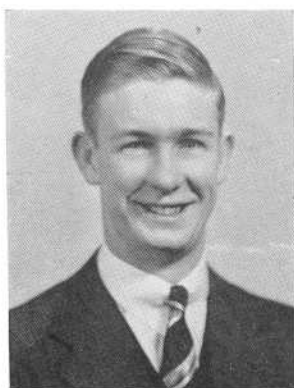
EDNA M. WILLIAMS

Upper Health Councillor 2
Dramatic Club 3
National Honor Society 3, 4
Commercial Club 4
Chairman of Gift Committee 4
Senior Debating Finalist 4
Library Aid 4



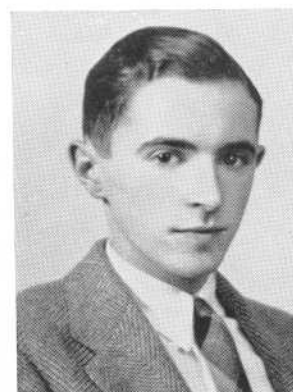
GEORGE F. WILLIAMS JR.

"Georgie"



GEORGE B. WILLIAMSON

"Pop"



ARNOLD A. WOLFSON

"Arnie"



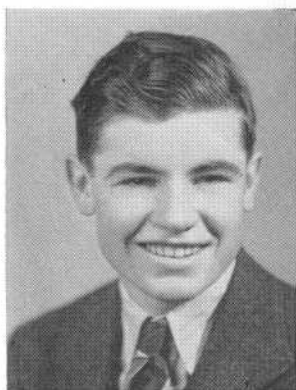
MILDRED WOLSTENHOLME

"Millie"

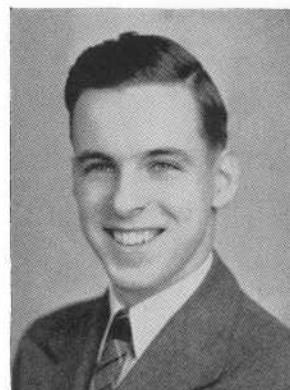


MARY T. G. WONG

Library Aid 3, 4
Commercial Club 4
National Honor Society 3, 4
Pin and Ring Committee 3, 4



THOMAS ALTON WOOD



OSBERT WORDELL
"Ossie"



MURIEL GRACE WRIGHT
"Sis"

Home Room Director 2
Gym Leader 3



MARY G. WROBEL



GLADYS YATES
"Gladdy"

Home Room Director 3, 4
National Honor Society 3, 4
Commercial Club 4
S.A.A.—Girl Councillor 1, Secretary 2
Vice President 3, President 4
Vice President of National Association of
Student Councils 4

ABBOTT, ROBERT S.
AGUIAR, JAMES
ANDERSON, CONSTANCE MARIE
CAREY, JOHN CHRISTOPHER
CODEGA, ARTHUR LOUIS
CORREA, EVEREST

CRUZ, MARIA J.
GONSALVES, ANTONE
LONGCHAMPS, PHILIP
MARCIARILLE, EDWARD FRANCIS
MORHY, MICHAEL JON
RYAN, WILLIAM EDWARD

..WHO'S WHO..

EARL DINSMORE	<i>Most Popular</i>	GLADYS YATES
RICHARD McMURRAY	<i>Best Looking</i>	GLORIA SMITH
THOMAS BROWN	<i>Best Personality</i>	ALICE INGHAM
EDWARD BOWEN	<i>Most Dignified</i>	SHIRLEY DUNN
ALBERT ST. AMOUR	<i>Most Athletic</i>	ALICE SULLIVAN
GEORGE McCULLOUGH	<i>Best Dancer</i>	RUTH DWYER
NATHAN DONDIS	<i>Best Dressed</i>	GLENNA GIENTY
BRUCE FOGWELL	<i>Class Wit</i>	RUTH KESSELL
SAUL RADOVSKY	<i>Most Interesting</i>	BARBARA O'CONNELL
STANLEY ALPERT	<i>Best Speaker</i>	MARY WONG
LAWRENCE MUELLER	<i>Best-All-Round Student</i>	ELEANOR RILEY
HILTON SALHANICK	<i>Most Brilliant</i>	JANE EDDY

ACTIVITIES...



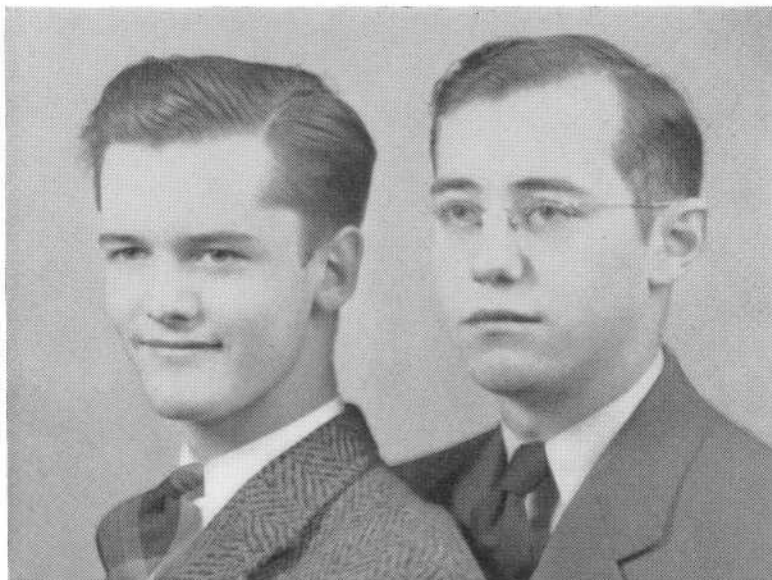
STUDENTS' ACTIVITIES ASSOCIATION

1941-1942 has been another busy year for the Council of the Students' Activities Association. In the program were three matinee socials, the Pigskin Hop, the banquet to honor our football players, the banquet for all school officers, the Awards Assembly, as well as a special entertainment for S. A. A. members. The Student Council made arrangements for the radio program presented by Durfee High School pupils in December, over Station WEEI in Boston as a feature of the series, "Americans in the Making," sponsored by the State Department of Education. The Council also arranged for the presentation of a play to promote the purchase of Defense Bonds and Stamps.

A new Durfee All-A Plaque on which were placed the names of the honor members of the class of 1941, has been purchased this year.

The entire Council accompanied by the Principal and Faculty Advisors, attended the April sectional meeting in Fairhaven. The Council was represented at the October sectional meeting in Abington, as well as at the Spring meeting of the State group held in Webster.

Members of the S.A.A. Council for 1941-1942:—*President*, Gladys Yates, '42; *Vice President*, Lillian Duffy, '43; *Secretary*, William Long, '44; Lucy Baj, '42; Raymond Kret, '42; Richard McMurray, '42; Barbara O'Connell, '42; Marian Hague, '43; Joseph Sullivan, '43; Angela Albanese, '44; Albert Wong, '44 and William Borges, '45. *Faculty Advisors* — Miss Mary Lee, Miss Anne L. O'Neil, and Mr. James F. Conlin. *Honorary Member*—Miss Alice G. Langford.



HOME ROOM DIRECTORS

This, the largest elective organization of the school, is composed of a boy and girl director chosen in each home room at the beginning of the school year. From this body, really a lower house to the S.A.A. itself, are elected a president, who is a senior director and who ex-officio becomes a member of the S.A.A. Council, and a vice-president-secretary, who is a junior director.

The responsibilities of all directors are many. In the home room itself they assist in checking attendance, reading the daily bulletins and various proclamations, and in preserving order during the absence of the teacher.

During drives such as the Junior Red Cross, Anti-Tuberculosis Association, S.A.A. membership, they promote interest in the cause and collect the membership fees. This year the directors sold Defense Stamps and collected waste paper which was donated by the pupils of the school.

Once a month a special meeting is held after school to discuss matters pertaining to the entire school.

The directors are a truly helpful part of our school life.

The officers of the Home Room Directors are Richard McMurray, president, and Alfred Orzechowski, vice-president-secretary. The Faculty Advisor is Miss Mildred V. Carroll.



THE BAND

The B. M. C. Durfee Band, under the leadership of Miss Rita M. Ford, has played an important part in various school activities. Everyone of its members has shown a very high type of school spirit.

In the Fall River Armistice Day Parade and in the Memorial Day Parade, the Durfee Band provided music for the John Foster Stafford Post of the American Legion. The band has performed at all the football games, and also played at a patriotic assembly. The band was on the program of the All-Boy Concert held here at Durfee.

This group does its utmost to arouse a strong school spirit and its members have shown themselves to be able musicians.

The Student Conductor of the Band is John Smith; Assistant Student Conductor Joseph Braga; Business Manager David Hirsch; Librarian Philip Wilcox.



CAMERA CLUB

Formed in 1938, the Camera Club has enjoyed four years of successful existence. Its main purpose is to teach the basic and fundamental principles of photography. Photography has become a great factor in the world today and good photographers are in greater demand than ever before.

We have had professional and amateur photographers give talks and advice to the club members. During the year we visited the *Herald News* where the process of developing the negative to the printing of the picture in the newspaper was demonstrated.

The darkroom technique is taught by the darkroom committee after school hours. Such things as developing, printing, enlarging, cropping and spot printing are demonstrated. Films are brought in by students and processed by themselves. Club dues pay for all equipment and material necessary.

Social events and contests are sponsored by the club during the year.

The club has two committees, the darkroom and the social committees.

The officers are President Edward K. Shea; Vice-President Robert Hellens; Secretary Nina Moceuk; Treasurer Thomas Quinn; Faculty Advisor Mr. Joseph J. Lawlor.



THE COMMERCIAL CLUB

President

MARJORIE MURRAY

Vice President

GRACE SHEA

Secretary and Treasurer

GLORIA SMITH

Faculty Advisor

MISS ISABELLE E. O'NEIL

The Commercial Club was organized to help commercial students become familiar with the functions of the business world and become acquainted with each other. To be eligible for membership in the club, students must be commercial seniors and receive 82% in English. One hundred five members were enrolled.

This year the club has been very active. At our assemblies outstanding business men and women were guest speakers bringing to our members new thoughts, ideas and inspirations. Classes in Salesmanship were held after school and members were placed in store positions during the holiday seasons and on Saturdays.

As for our civic contribution, we assisted the Red Cross in its drive for funds by doing clerical work and assisting at the booths throughout the city after school. We also helped the Civic Music Association and the United China Relief in their drives for funds. We purchased a \$100 Defense Bond and a number of us completed a First Aid Course given by our advisor.

We enjoyed many happy hours together at our socials which consisted of a Get Together Party early in the year, a Valentine Dance and the Annual Club Outing.



DEBATING

Durfee debaters and speakers continued their heritage of successful competition in National Forensic League speech tournaments. Although but one veteran debater and one veteran speaker returned, Mr. William F. Kaylor, coach, developed a balanced debating team and a very effective speaking unit.

Durfee representatives took the lion's share of honors in the Southeastern Massachusetts District Speech Tournament held at Durfee on March 5 when they won four championships in competition against the representatives of Barnstable, New Bedford, Academy of the Sacred Hearts, Coyle, Falmouth and Provincetown. William Higgins won first honors in original oratory as did Robert Kalaba in extempore speaking and Lawrence Mueller in humorous declamation. The debating team took second place honors. All Durfee speakers finished in the first four places of every contest and scored a total of forty-six points to win the tournament championship.

Durfee entered a full representation in the State Tournament held in Hyannis on March 27 and 28, and outscored competitors from twenty-seven schools to win the Balfour Trophy, symbolic of the tournament championship. Five speakers advanced into the final rounds of competition and each placed in the first four point-winning places.

David Israel tied for first place in extempore speaking but took second when the tie was broken. William Higgins won third place honors in original oratory and Stanley Alpert placed fourth. Alpert won third place in oratorical declamation while Muriel Licofsky took fourth place honors in humorous declamation.

The debaters advanced to the quarter finals but were eliminated when they dropped their third decision. The team won three, and thereby maintained its consistent win-loss ratio. The season's record was six wins and six losses.



Novelty Night



Jewell's Romance



The Daughter of Herodius

Kathleen's Debut



Pierrott



Eddie's Career



DURFEE DRAMATIC CLUB

RAGGEDY ANN AND RAGGEDY ANDY IN CONVERSATION

Bong — Bong — Bong — Bong — Bong — Bong — Bong — Bong.

Ann—"Andy, wake up, wake up."

Andy—"What's the matter? Are we going somewhere?"

Ann—"Have you forgotten the Massachusetts Drama Festival in which the Durfee Dramatic Club is taking part? You know the busses leave at daybreak for Boston and we must be there on time."

Andy—"Of course, I remember. They are giving 'The Birthday of the Infanta,' aren't they?"

Ann—"Yes, that was one of the plays they put on last year, too. They certainly pick interesting plays."

Andy—"I'll say. Remember the matinee when they had four original one-act plays? Let me see—they were 'Eddie's Career,' 'Jewel's Romance,' 'Kathleen's Debut,' and 'The Daughter of Herodius.' There was some excellent work done on that production."

Ann—"I agree with you, but Curtain at Eight was a close runner-up. 'Giant Star,' 'Antic Spring,' and 'Pierrot, His Play,' were all excellent. Variety is the spice of life, and those club members certainly insert it into their programs."

Andy—"Right again. Talking of variety, will you ever forget Novelty Nite. Ha, Ha! That Fashion Parade in which the boys dressed up as girls and modeled sure was funny."

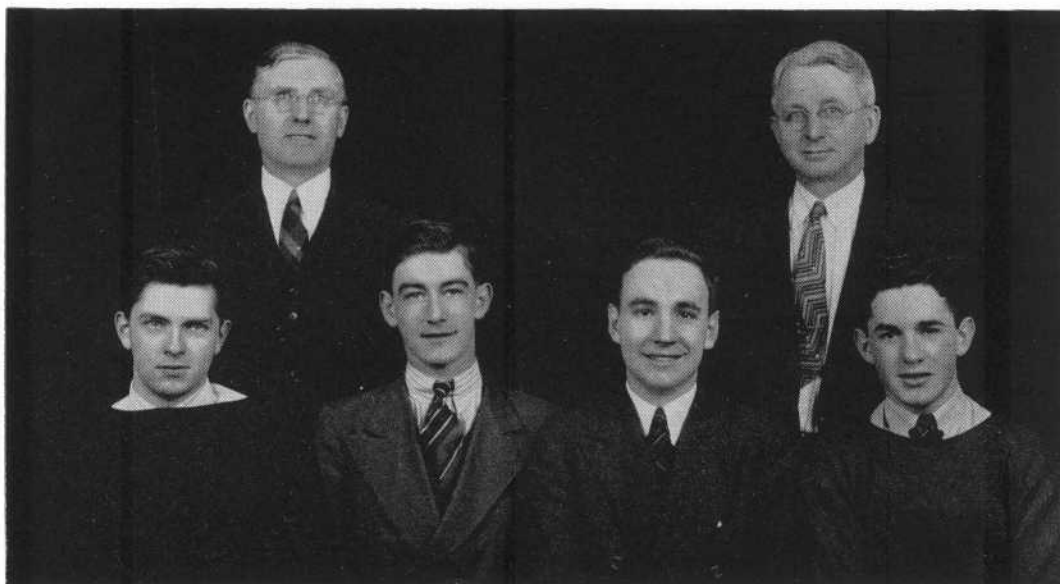
Ann—"And you know, the remarkable part of it is that all those short plays and skits were student cast and directed, under the supervision of Miss Barbara Wellington and Miss Elizabeth L. Leonard."

Andy—"I know it. It takes a lot of hard work to put on a show, and most people don't realize it."

Ann—"Well, that club of one hundred members lives up to that last remark, anyhow. And you know it isn't all work. Ask anyone about the fun they had when they went to see 'Macbeth' at Brown University in Providence, and Katherine Cornell, in 'The Doctor's Dilemma,' at Boston. The Hallowe'en Party and the banquet at the end of the year rate pretty high, too."

Andy—"Well, we've gotten so interested in our conversation that we'd better hurry if we are going to catch that bus."

Ann—"Okay, I'm coming, but I could talk about the Dramatic Club all day."



ELECTRICAL CLUB

President

ALINDO CARDELLI

Secretary

JOHN GUTEK

Vice President

WILLIAM HARRINGTON

Treasurer

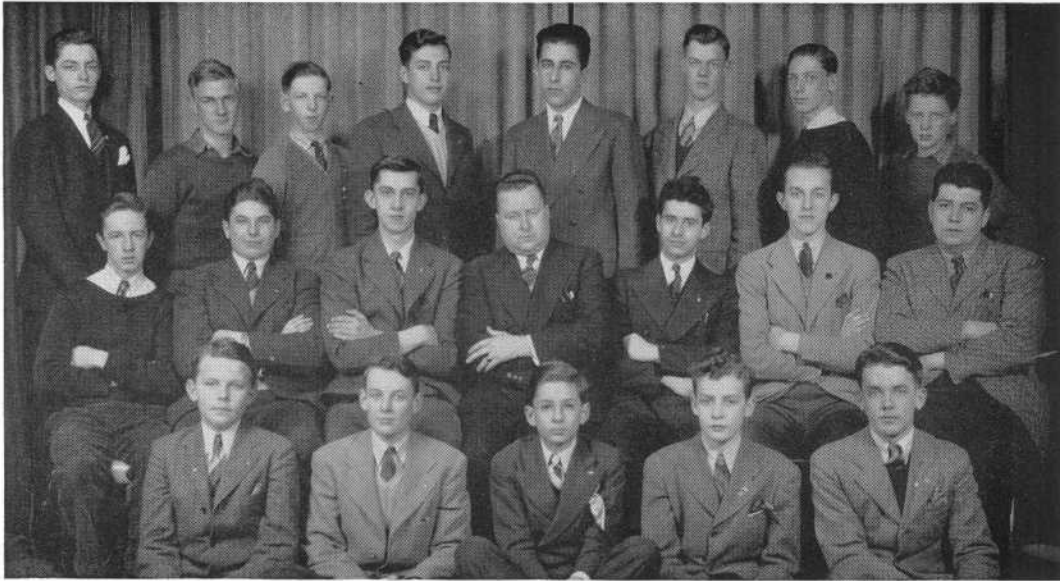
THOMAS GARVEY

Faculty Advisors

MR. HENRY J. SHEA and MR. MYRON T. ASHLEY

The Electrical Club has completed another successful year under the guidance of its Faculty Advisors, Mr. Henry J. Shea and Mr. Myron T. Ashley. This club is one of the oldest in the Durfee High School, being established over twenty years ago. The purpose of the club is to promote general interest among electrical students in that field through get-togethers and co-operation with members of various branches of the electrical industries.

The members of the Club meet bi-weekly on Wednesdays after school, and after a short meeting leave to visit plants and other places which are directly concerned with electricity. However, this year it has been most difficult to secure appointments because of the war program. Most industries and public utilities will allow no visitors at this time.



THE DURFEE FLYING SQUADRON

The purpose of the Flying Squadron is to promote aviation interest in B. M. C. Durfee High School and throughout our city and to aid, in so far as possible, the continual advancement of interest in aviation in all its phases.

In carrying out this policy during the past three years, our club has benefitted many Durfee boys by giving them a preliminary ground course in aviation.

Our first president and founder was serving on a bomber at Hickam Field when the Japanese attacked. Our first vice-president has started his training as an aviation cadet and expects to graduate as a member of the Army Air Corps.

Our club is aiding in the war effort by giving a preliminary ground course in aviation, approved by the C.A.A. We are building models for the Navy and have volunteered our services as air-raid spotters.

The officers for the year are Francis Scott, president; William Raposa, vice-president; and Jerome Mitchell, secretary.

Mr. Edward B. Downs is the faculty advisor.



THE FORUM

President
ALAN LASH

Vice President
FRANCIS AINSWORTH

Secretary
DONALD CHYTILO

Sergeant-at-arms
WILLIAM LONG

The Forum aims to promote public speaking and debating. Not only does it financially help the Debating Team, but it encourages debating at its bi-weekly meetings. Its aims are those which benefit the future citizens of the country.

It encourages its members to acquire the ability to speak fluently and well. Today, more than ever, it is necessary for an American to be able to express his thoughts if he is to uphold the great ideals of this democracy.

One of the guest speakers of the club was Miss Margaret Hutchins, who spoke on Civilian Defense and the opportunities that students have for service to our country at war.



HEALTH CLUB

President

ANNA HENRY

Vice President

PAULINE DUQUETTE

Secretary

CONSTANCE MORLEY

Advisory Councillors

EILEEN RYAN and EDITH COOK

Sanco Aides:

Edward Bieler, Claudia Dumaine, Pauline Larrivee,
Irma Liner, Arline Copeland and
Theresa Oliveira.

The Health Club is composed of the entire Sophomore class. The voting power is vested in five officers and two representatives from each Sophomore home room.

The purpose of the organization is to maintain the health standards of the school by encouraging participation of the entire student body in numerous projects which the club sponsors each year. Among these are the annual Nutrition, Posture, Sanitation, and Safety Drives, and the Anti-Tuberculosis Campaign.

Sanco Scout Squads are organized to inspect lockers and desks; to enforce the rules of sanitation in the cafeteria, corridors, and on the stairs of the Technical and Durfee buildings, and on the school grounds.

In times of financial stress, Thanksgiving baskets are distributed among the needy families of students of the school.

Miss Angeline B. Crispo and Miss Maybelle E. Ramsay are the faculty advisors.



THE HILLTOP

To the student body the Durfee Hilltop—a four page combination of news, editorials, cartoons, sports, and various “columns”—is a regular Friday morning feature of high school life.

To the fourteen Seniors who make up its 1941-42 staff the paper represents thirty weeks of answering Faculty Advisor John T. Crowley's call for “More copy!” by following up tips on news, “covering” stories, securing advertisements from local business men, typing or scribbling what would constitute so many inches of print, racking brains for ideas, and (often) hoping for inspirations. In fact, anyone who visits Room 2 during publication time will hardly recognize the sedate, poised members in the photograph as the same “journalists in the making.”

This year has been a very successful one for our school weekly, both financially and in the amount of interest shown by student readers. With twenty-one years of service to its credit, the Hilltop salutes the graduating class of '42.

The Staff includes: *Editor-in-Chief*—Ruth V. Sherlog, *Business Manager*—Alice Victorine, *News Staff*—Alice A. Sullivan, *Editor*; James Maguire, William C. Raposa and Edward Dubiel; *Features*—Hazel Trust, Dorothy M. Wiley, Claire P. Roach and Albert Pimental. *Sports*—Bertram Udovin and Francis B. Sokoll; *Circulation*—William H. Carey and Claire J. Staples. *Faculty Advisor*—John T. Crowley.



LITERARY CLUB

1941 marked the opening of the Literary Club's eighth year of service to Durfee. The first few sessions found some thirty-three members in attendance. As the year sped on, however, some of the flock roamed away, but more than half remained to contribute their literary work to gain the rating of active membership.

Under the guidance of Mr. Ambrose F. Keeley, faculty advisor, the members attended the bi-weekly meetings to enjoy the contributions in prose and poetry, with special emphasis on the short story, plot formation and the character sketch. A new feature in the club's activities was the addition of a program committee.

General criticism of both the student body and the faculty advisor was constructive and well received.

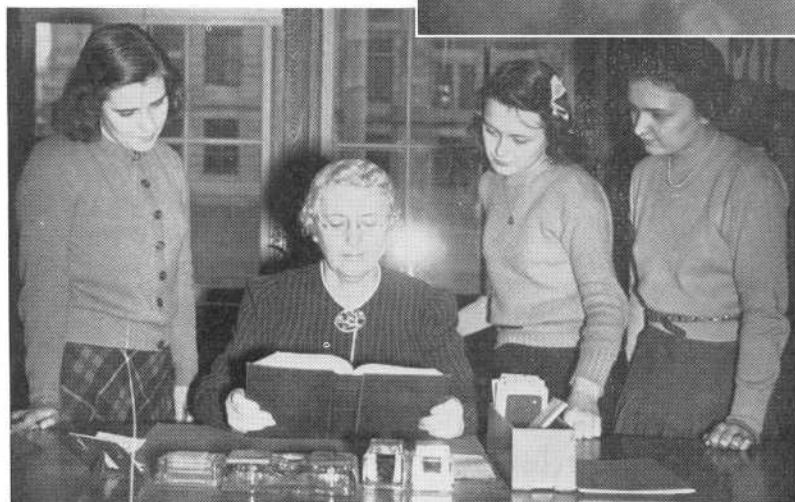
The officers are Amelia Przybyla, president; Dorothy Andrade, vice-president; Hazel Trust, secretary.



Christmas Season



Library Aids



Library Seminar

Magazine Corner





THE LIBRARY AIDS

This group, consisting of students who act as library aids throughout the year under the guidance of Miss Marion E. Kernan, the school librarian, is one of the most important of the school organizations. It is the only organization in the school which is composed of students chosen from the Senior, Junior and Sophomore classes, because of their scholastic standing, dependability, cooperation, and general helpfulness. This year the group chose Jane B. Eddy as president, Constance LaChance as vice-president, and Eleanor M. Riley as secretary.

Each morning, from eight o'clock to eight-fifteen, three or more aids are on duty in the library to issue passes and check returned books. Other members are on duty every period to match passes and carry them to the study halls.

Another important feature of this group is the fact that they stand ready to help not only Miss Kernan in the library, but also any teacher who may need their services.

At Christmas time a Christmas tree which was enjoyed by all was set up near the middle window in the library.

The complete list of library aids for September, 1941 to June, 1942 is as follows:

Rita Battistoni, Edith Cook, Nola Desforbes, Lillian Duffy, Jane B. Eddy, Mary Field, Louise Finucane, Morgan Glavin, Marion Hague, Helen Kaczynska, David Keusch, Constance LaChance, Fernande Lemay, Yvonne Madore, Theresa Oliveira, Isabelle Pearson, Beatrice Pereira, Mary Pereira, Eleanor Riley, Hilton Salhanick, Elizabeth Salvo, Margaret Shea, Anne Stover, Mary L. Stover, Gloria Urcelay, Richard Wallace, Edna Williams, Mary Wong.



ORCHESTRA AND CHORUS

The school year 1941-42 was marked by three innovations for the orchestra and chorus. The first was the formation of small, student-managed vocal and instrumental ensembles which were introduced to the public in a recital in January. No longer is anyone refused music because of the transportation problems presented by our sixty piece orchestra and our chorus of equal membership, and these new groups have constantly been providing music for assemblies, club programs, plays, and the like.

The second was the organization of a Boys' Glee Club and a Girls' Glee Club. These clubs made their first appearance over WSAR during Education Week and thus did the first public singing by Durfee musicians during the school year, the carolling before the Rotary Club and at City Hall being the first performances of the mixed chorus.

The third was the presentation of a guest concert in February. The capacity audience at this concert included parents of the participants, music teachers, musicians, and members of musical clubs of the city.

After the guest concert, the chorus sang over WEEI on the "Young Americans in the Making" program and was complimented by the program director who said that it was the best high school chorus that had broadcast up to that time.

Shortly after this, a number of Durfee musicians participated in the All-State Concert in Boston. Durfee had so many first-desk players in the orchestra that the president of the group sponsoring the All-State Orchestra was prompted to write Miss Ladd in praise of her work.

In April the orchestra and chorus co-operated in presenting this year's Gilbert and Sullivan operetta "Ruddigore."

The State Music Festival was cancelled this year but the final months of school were spent in preparation for our last performances on Founder's Day and Commencement Day.



NATIONAL HONOR SOCIETY

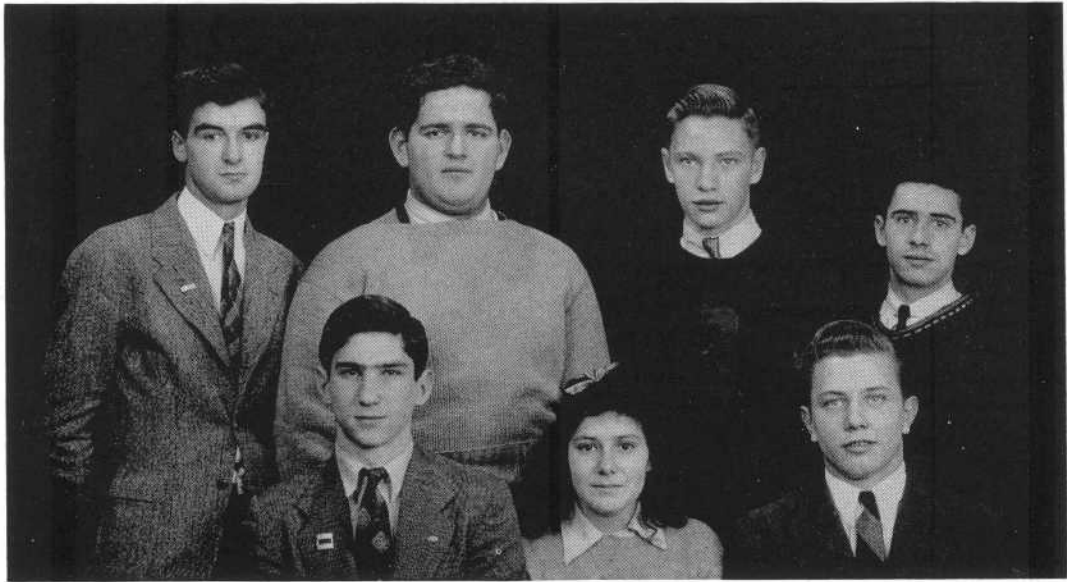
During the six years of its existence, the Mu Kappa Delta Chapter of the National Honor Society has achieved an important place in school life at B. M. C. Durfee High School.

A purely honorary organization, its membership is composed of the highest ranking students of the Senior and Junior classes who are chosen on the basis of character, service, leadership, and scholarship.

Shortly after the members were chosen for this year, a most impressive induction ceremony took place in the Auditorium. At the business meeting which followed this program, the officers for the year 1941-1942 were elected. Those chosen are Lucy Baj, president; Rina Battistoni, vice-president; Isabelle Pearson, secretary.

All pupils of our school are inspired by the society to strive for achievement of the four aims of the organization—character, scholarship, leadership, and service.

The Faculty Advisors are Mr. Charles V. Carroll, Miss Mildred V. Carroll, and Miss Mary Lee.



THE TRAFFIC SQUAD

The Traffic Squad, the oldest organization under the S.A.A., started its fourteenth year under the guidance of Miss E. Estelle Miles. About nineteen years ago, the Traffic Squad was formed by a committee consisting of Miss Margaret E. Macdonald, Mr. Ralph M. Small and Mr. John M. Townsend. The latter, at the end of this school year, will reach the age of retirement, and to him we pay our sincerest regards.

This year, Miss Miles chose the following as officers to lead the squad: Solomon Katzen, captain; Theodore Hearth and Joseph Feldman, first lieutenants; Francis Scott, William Renaud, and James Ponte, second lieutenants; Florence Faria, secretary.

The Traffic Squad as usual was in charge of the signs which prevent the automobiles from entering that section of Rock Street between the two schools while the pupils go from one building to another. The officers were on duty in the corridor during the four lunch periods and they carried out the rules and regulations set down by Mr. Carroll and Miss Miles.

Even though the Traffic Squad was smaller than that of other years, it has kept up the high standards of its predecessors.



THE YOUNG DRIVERS' ASSOCIATION

The Young Drivers' Association is an active organization in the participation of school affairs. The club has grown steadily through the years under the direction of Mr. John V. Donnelly. The year, 1942, with our country at war found the Y.D.A. engaged in the collection of waste paper and magazines and assisting in the collection of books for the U.S.O. At Thanksgiving and Christmas, aid was given to the Salvation Army in the distribution of their baskets. At its meetings during the year the club stressed the importance of car maintenance and the conservation of tires and gasoline.

The main purpose of the club is to promote safe driving among the young drivers both in school and in the community. It is the duty of the club members to set good examples of skill and courtesy to other drivers. In this way the Y.D.A. is accomplishing an important task by helping its members become better citizens of the community and the country.

The officers for the year are: Henry Chin, president; Edward Waring, vice-president, and Jean Ferguson, secretary. Francis Souza was in charge of the collection of waste paper and magazines. The faculty advisor is Mr. John V. Donnelly.

ATHLETICS...



THE GIRLS' NUMERAL CLUB

The Girls' Numeral Club, under the capable direction of Miss Virginia W. Frost, has progressed rapidly during the past year through a program designed to improve and enlarge athletics among the girls.

In September, members of the organization volunteered their services to help Miss Frost conduct her gym classes and acted as "Gym Leaders."

Before Thanksgiving the girls purchased sweaters, formed a bowling league which meets twice a month, used the gym on Friday afternoons for basketball, volleyball, and deck tennis and held a Hallowe'en Party which was preceded by a "Mystery Ride."

Following the Thanksgiving vacation fourteen new members were admitted from a group of forty candidates. In December, a Christmas Party was held in honor of these new members. Shortly after this the club held a skating party at which it had as its guest Ruth V. Sherlog, editor-in-chief of the Durfee Hilltop.

A committee was appointed to choose a pin or insignia for the upper-classmen who did not wish to receive a second set of numerals. In March, the Sophomore Girls' Basketball Tournament sponsored by the organization was held and the name of the winning team was inscribed on a trophy. At the end of March thirty-seven girls went to the Sargent College of Physical Education demonstration in Boston.

Throughout the year the following guest speakers delivered educational talks at club meetings: Miss Mildred Erickson, Fall River Girl Scouts' Executive Secretary; Mrs. Howard Blakeley and Mrs. Norman M. Zalkind, both former gym teachers at Durfee, Quartermaster Leandro Urcelay, who spoke on his adventures during the war, Miss Christine V. Chippendale of the Fall River Herald News and Miss Mary Elizabeth Merritt, a Durfee graduate and a student at Sargent College.

The highlight of April was a "Sophomore Day" when the lower class members assumed the offices in the club, conducted a meeting and led a bicycle ride to Assonet.



CHEERLEADERS

At the beginning of the school year, the cheerleaders were chosen from the student body by a faculty committee headed by Miss Virginia W. Frost. It is the duty of these girls to lead the cheering section at each football game. From this group one girl who has been a leader for two years is chosen as head. She must supervise all practice and lead the girls in their cheering at each game.

An unfortunate accident prevented Ruth Dwyer, the head cheerleader, from taking part in the activities. Her duties were ably carried out through the rest of the season by Charlotte Fitzgibbons.

Numerals for cheerleaders were awarded the following: Seniors Ruth E. Dwyer, Charlotte Fitzgibbons, Beatrice O'Driscoll, Margaret Simon; Juniors Evelyn Pascoal, Yvonne Gagnon; Sophomores Nancy DuBanevich, Marion Furze.



RUTH DWYER
Head Cheerleader



BASEBALL

When the 1942 baseball season rolled around Coaches Urban and Hathaway were faced with the task of rebuilding a brand new team. All the starting members of the 1941 championship nine had graduated and there were just a few substitute holdovers. However, with this nucleus and the aid of several promising Sophomore and Junior prospects, they developed a team which has great possibilities.

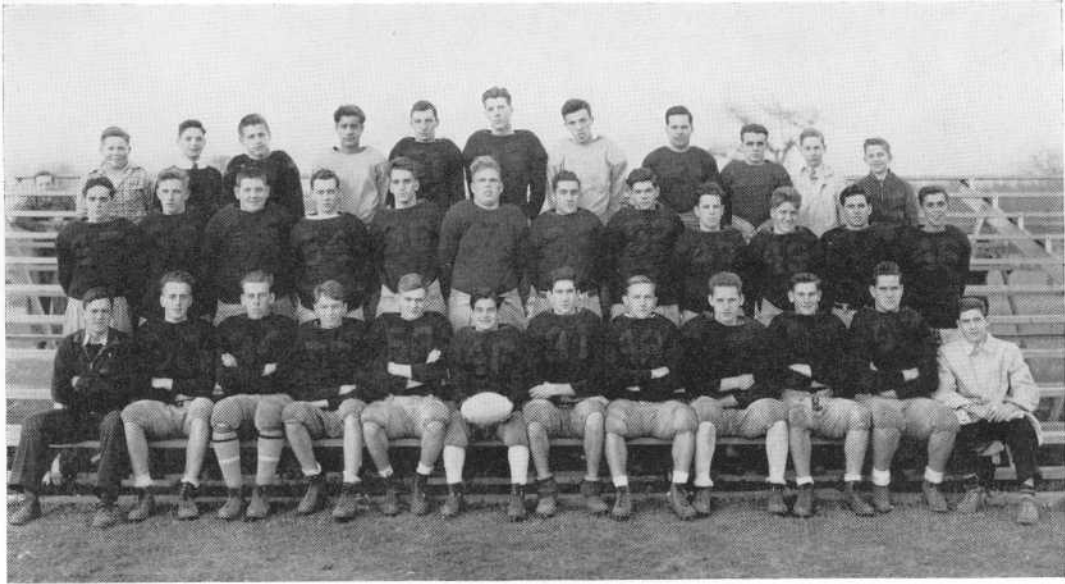
The Senior members of the squad are "Gus" St. Amour, "Ted" Loika, "Stan" Mikolazyk, Paul O'Neil and "Tom" Stanton.

The starting lineup is as follows:

St. Amour, Parsons c, Loika, Kaplan, Chatterton, Smith p, Mikolazyk 1b, Pappas 2b, Lowney ss, D. O'Neil 3b, P. O'Neil lf, Hawkins cf, Stanton rf.

The record of the team to date:

Durfee 17	Durfee Textile	11
Durfee 12	Rogers High	2
Durfee 9	Durfee Textile	2
Durfee 9	Taunton	3
Durfee 2	New Bedford	6
Durfee 4	Taunton	5
Durfee 14	Coyle	0
Durfee 5	New Bedford Vocational	9
Durfee 3	New Bedford	11



FOOTBALL

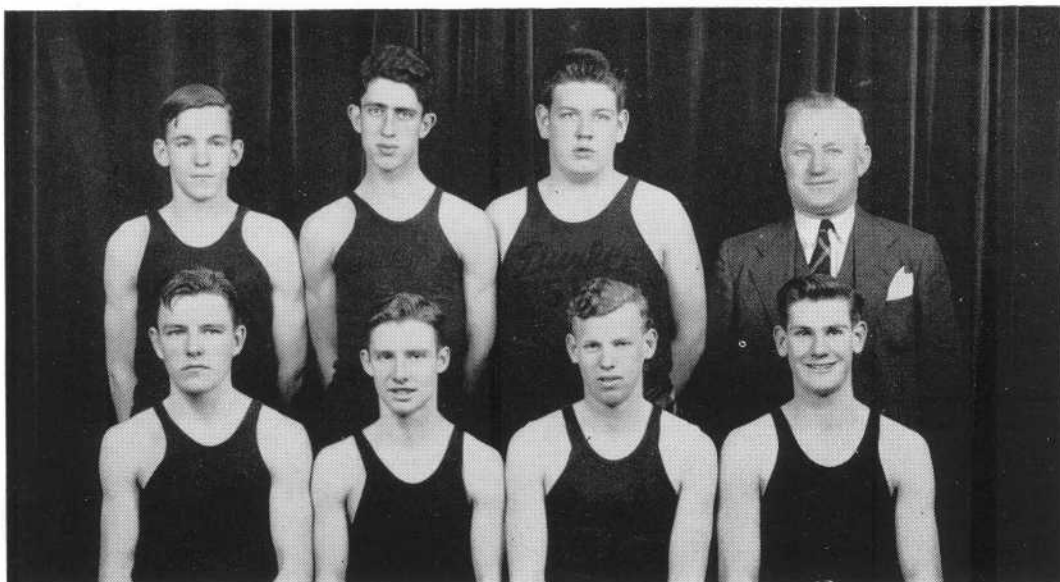
Led by Captain Ed Leandro the Durfee eleven opened the season with a smashing victory over Somerville Vocational.

Many outstanding games were played by the Hilltoppers despite a poor season record. The boys lost a tough game to New Bedford Vocational by a score of 6-0, in a night contest at Alumni Field. The feature of this game was the 60-yard touchdown dash by Burgo, the Vokes' fullback, which was sufficient to win the game.

Against North Attleboro the Hilltoppers waged a spirited contest, but to no avail as the teams remained deadlocked 0-0, at the close of the game.

The annual game against New Bedford which was played at Whaletown was a well played contest during the first half. The teams were deadlocked at half time 0-0, and to some observers it looked as though Durfee might upset the applecart. But New Bedford put the pressure on during the last half and scored four touchdowns to walk away with the game.

Some consolation was awarded Durfee followers when "Ed" Haracz, the Hilltoppers' great linesman was named at the left tackle position on several All-County teams. Other players who showed plenty poise and stamina were "Tommy" Doyle, "Tom" Dolan, Roger Carroll, "Joe" Canole and "Sam" Katzen.



BASKETBALL

Meeting stiff opposition throughout the entire basketball season, the Durfee hoophmen emerged with a six won and nine lost record during 1942.

The starting lineup composed of "Norm" Rivard, "Gus" St. Amour, "Bill" Hawkins, "Dave" Dunne and "Bob" Morris got off to a shaky start. It was during the latter part of the season that the Red and Black started to roll.

After gaining their first victory over Durfee Textile, the Durfeeites presented evidence of "waking up." In their best game of the year at the Boys' Club, the Hilltoppers defeated New Bedford Vocational 43-41 in a sudden death overtime period.

The second New Bedford encounter provided plenty of excitement. New Bedford, which had won 12 straight games up to that time, gained a 45-34 decision after the Hilltoppers had led at the half.

Three benefit games were staged by Durfee. In a game for the Infantile Paralysis Fund the Fosters, champs of the City League, were the Hilltoppers' fourth victims by the score of 23-21. An Alumni team composed of former Durfee athletes was defeated 21-17 in a game for the Naismith Memorial Fund. In their last benefit, for the CYO Fund, the boys lost to the CYO Alumni five, 51-38.

On the whole, it can be said that the Hilltoppers had a fairly successful season. The Red and Black scored 417 points as against their opponents' 525. Individual scoring honors went to "Norm" Rivard who scored 116 points, followed by "Gus" St. Amour who netted 112 points.

TENNIS

Some twenty candidates answered Coach Keeley's call for the annual struggle for places on the Durfee Tennis Team. These, under the watchful eyes of the coach and Captain Marvin Levin, the only returning letterman, worked hard to whip themselves into condition for the season.

Schedule making this year was especially difficult since some schools have discontinued tennis for the duration of the war. However, the inexperienced squad looked forward to home and home matches with New Bedford High, Attleboro High, De La Salle Academy, and Hope High of Providence. In addition, a single match with La Salle Academy was anticipated.

Members of the class of 1942 who are expected to see action on the courts this year include Roger Carroll, John Arnold, and Captain Levin, all members of last year's squad.

TRACK

Candidates for the 1942 track team answered Coach Fred Harrington's call early in April with a large number of promising Sophomores. The worth of all candidates will be tested in the coming inter-class meets. After these are held, the team will be selected for the meet with New Bedford High.

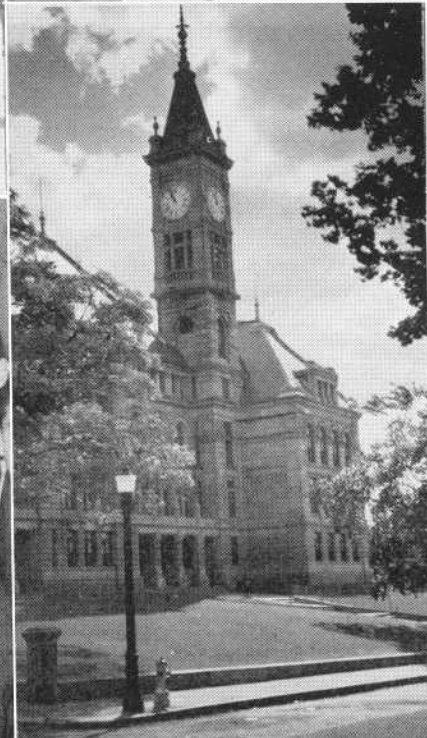
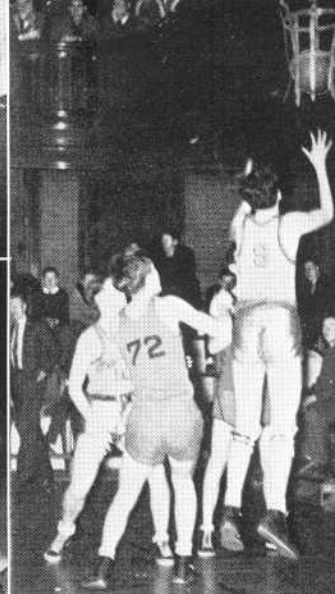
Holgate Dean, an outstanding star of last year's team, was elected captain for the 1942 season.

VARSITY CLUB

The Durfee Varsity Club which is composed of Durfee lettermen, is now concluding its twelfth year of service to Durfee. During these years the club has aimed to further interest in competitive athletics, to enforce the ideals of sportsmanship, and to promote better school spirit.

Each year this organization conducts a Varsity Sports Night at which funds are raised to purchase sweaters for those students who have earned a Varsity "D" either in football, baseball, basketball, track or tennis. This show has become a popular affair with Durfee students who enjoy the boxing and wrestling bouts staged by members of the club and volunteers from the student body.

The officers of the Varsity Club are Robert Morris, John Munroe, Samuel Katzen and Thomas Dolan. The club is under the direction of Mr. Louis J. Urban, faculty advisor.



ADS...

CONGRATULATIONS

to the Class of '42

— OF WHOM IT HAS BEEN
OUR PRIVILEGE TO HAVE
PHOTOGRAPHED MANY OF
THE MEMBERS SHOWN IN
THIS BOOK.

PHOTOGRAPH STUDIO—FOURTH FLOOR

CHERRY & WEBB CO.

STENOTYPE TYPEWRITING

SHORTHAND

BOOKKEEPING

ACCOUNTING AND

CIVIL SERVICE COURSES

Day and Evening Classes

Herrick's Institute

209 FRANKLIN STREET

Fall River, Mass.

Tel. 2-5861

Compliments of

McWhirre

FALL RIVER'S

LARGEST

DEPARTMENT STORE

MIDDLESEX **UNIVERSITY**

COLLEGE OF ARTS AND SCIENCES, A.B. and B.S. degrees

SCHOOL OF MEDICINE, M.D. degree

SCHOOL OF VETERINARY MEDICINE, D.V.M. degree

- Qualified high school graduates may enter the College on JULY 1ST or on SEPTEMBER 24TH. Accelerated wartime program of preprofessional study prepares candidates for admission to the Veterinary School in twelve months, and for a B.S. or A.B. degree and admission to the Medical School in 36 months.

- Middlesex University participates in the federal student work program of the National Youth Administration. Coeducational. Modern, newly erected buildings. 100-acre campus. Comfortable new dormitories. Well-equipped laboratories. Faculty of specialists for each school.

CATALOG WILL BE SENT ON REQUEST

MIDDLESEX UNIVERSITY • WALTHAM, MASSACHUSETTS

Summer School Opportunities—

for young men expecting to enter Military Service and for women wanting to prepare for War Positions in Business or Government.

Intensive 6 or 8-week course in Shorthand, Bookkeeping, Typing, Filing, Comptometer under experienced instructors.

STARTS JUNE 29—CONSULT THE PRINCIPAL

**THIBODEAU BUSINESS
COLLEGE**

HUDNER BLDG., 130 So. MAIN AT BORDEN ST.

"The OLD RELIABLE Business School"

DEPENDABLE — FOR 54 YEARS

Compliments of

Berchman

Epsilon

Clubs

**CONGRATULATIONS
TO THE CLASS OF 1942**

The defense program needs your trained services. Decide now to prepare quickly for profitable employment. Graduates of college or general courses can train as secretaries in one school year.

SUMMER SCHOOL BEGINS JULY 6

**The
F. G. Allen School**

"In its convenient location"

Granite Block

Fall River

Compliments of

**Fall River
Herald News**

Compliments of

**Adaskin
Furniture Company**

SUCCESS

TO THE CLASS OF 1942

Loring Studios

392 SPRING STREET

Opposite St. Mary's Cathedral

TELEPHONE 8-5022

Compliments of
AMICI FRATERNITY

Compliments of
VIVE

ADAMS BOOKSTORE
SCHOOL SUPPLIES
Ring Books and Paper
Collegiate Dictionaries
165 NORTH MAIN STREET

Compliments of
EAGLE RESTAURANT
NORTH MAIN STREET

JOE SIM
LAUNDERER AND CLEANSER
WILLIAM WONG, Prop.
Suits Cleaned and Pressed
227 Bank St. 599 So. Main St.

Best Wishes from the
PHOTOGRAPHIC DEPARTMENT
WALTER C. FRAZE CO.
9 NORTH MAIN STREET

HUTCHINSON'S ART SHOP
PICTURES - PICTURE FRAMING
Artists' Supplies - Diplomas Framed
154 SECOND STREET

Compliments of
NONPAREIL
CONFECTIONERY

Compliments of
BESSE RUSSELL COMPANY
221-223 SOUTH MAIN STREET

Great Success to All!
Class of 1942

MULLEN BROS.
SQUARE DEAL JEWELERS
254 SOUTH MAIN ST. FALL RIVER

Compliments of
EMPIRE MEN'S SHOP

Compliments of
SMITH'S DRUG STORE
Opposite PUBLIC LIBRARY

Compliments of
THE NOBBY MEN'S SHOP
162 SOUTH MAIN STREET

Compliments of
LAKE'S
JEWELER AND
OPTOMETRIST
42 NORTH MAIN STREET

Compliments of
WARING
YOUR JEWELER
32 NORTH MAIN STREET
Telephone 2-6501

Best of Luck to the
Graduating Class of 1942

ENTERPRISE
Department Store
251 So. MAIN ST. FALL RIVER

GAGE HILL
RIDING ACADEMY
4077 NORTH MAIN STREET
1 Mile North of Steep Brook Corner
Dennis J. O'Brien, Mgr. Tel. 3-2811



PRINTED BY
C. J. LEARY & SONS, INC.
FALL RIVER