

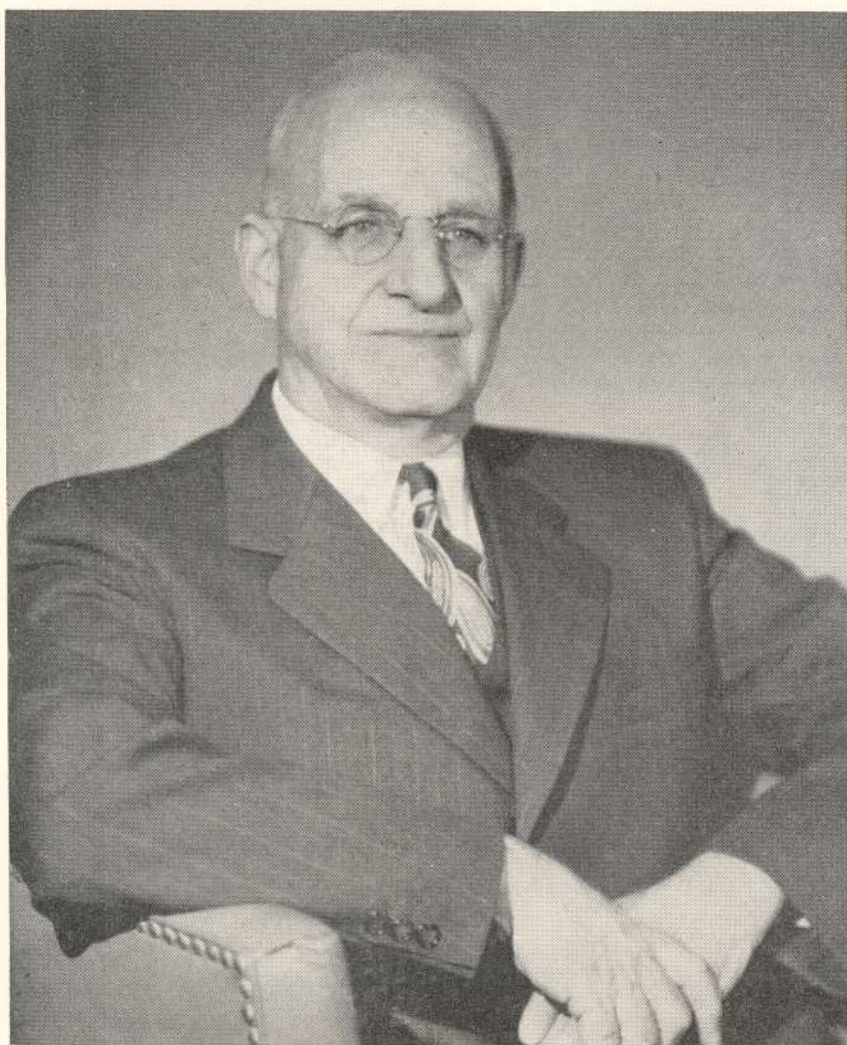


**B. M. C. DURFEE HIGH SCHOOL**

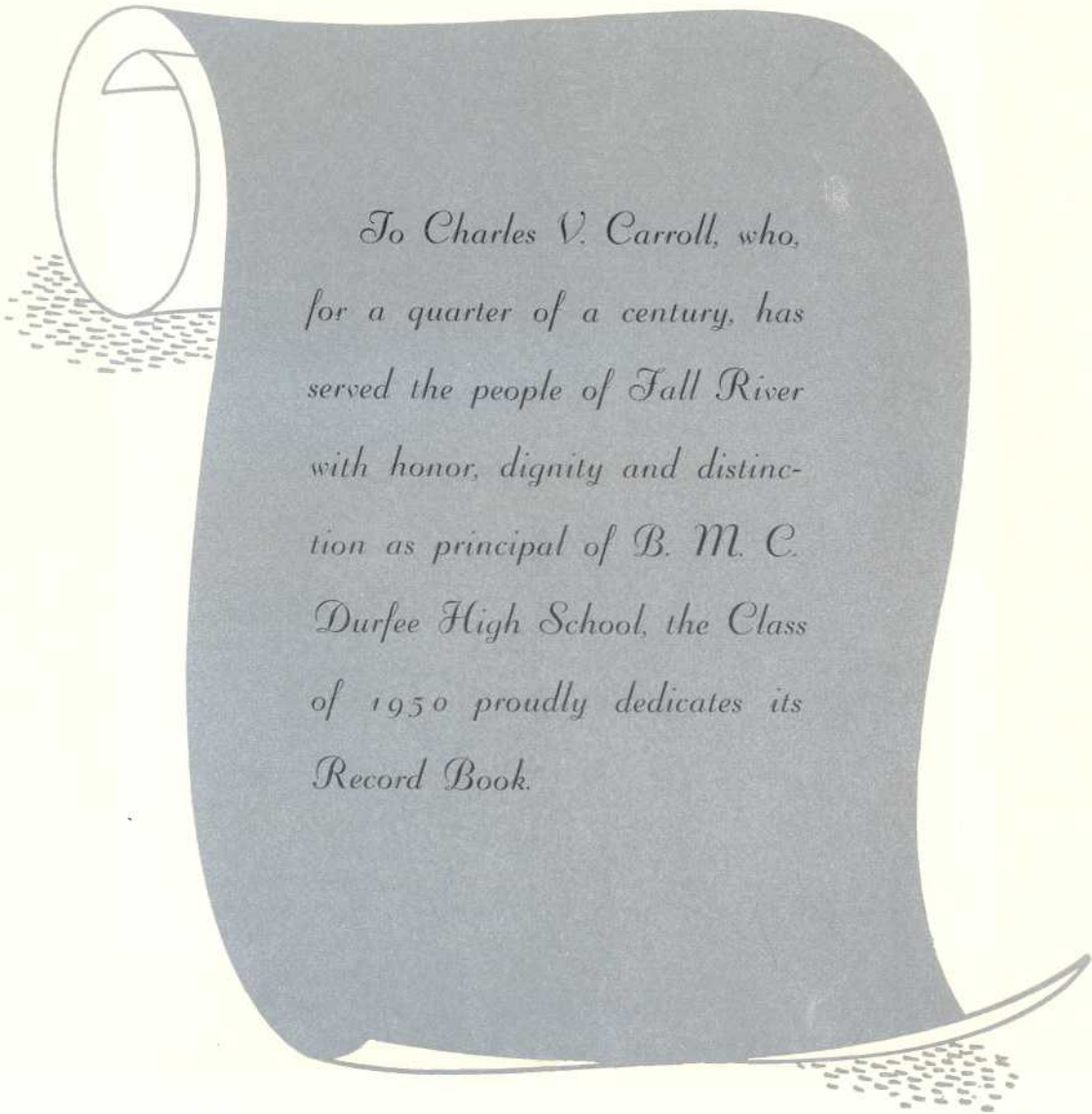
# RECORD BOOK

**1950**





# DEDICATION



*To Charles V. Carroll, who,  
for a quarter of a century, has  
served the people of Fall River  
with honor, dignity and distinc-  
tion as principal of B. M. C.  
Durfee High School, the Class  
of 1950 proudly dedicates its  
Record Book.*



# 25 YEARS OF

The decision to dedicate this book to Principal Charles V. Carroll was not prompted solely by the desire to give customary recognition to an anniversary. Special tribute, the Record Book Staff felt, is overdue to one who has devoted himself so zealously to education, particularly the education of Fall River youth. An appraisal of his administration justifies the use of superlatives in describing his contribution to the record of B. M. C. Durfee High School.

Charles V. Carroll, then superintendent of Woonsocket, R. I. public schools, was elected principal of Durfee on August 4, 1925 and assumed his new duties the following month. A graduate of Holy Cross, he had served his native city as an evening school principal, high school teacher and vice-principal, prior to his election as superintendent, supplementing his teaching experience with special courses at Brown, Rhode Island College of Education and Harvard.

## *Fire and Reorganization*

The administrative ability of Durfee's new principal was soon tested. When on Sunday, April 10, 1927 the original Technical building was destroyed by fire, his was the task of completely reorganizing the school with a minimum of delay. With practically all shop equipment as well as classrooms and countless text books destroyed, and new programs to be made out for every teacher and pupil, it is amazing to read that the resumption of school routine was held up only one week after the Spring vacation, then at hand. Double sessions were held in the Durfee building; the facilities of the neighboring Lincoln and Westall schools were utilized. The Hilltop resumed publication on April 29, its columns replete with news of Spring sports and other extracurricular activities. Teachers and pupils had cooperated with their principal. A time and place were found for everything — even detention. Durfee was still Durfee.

A new and more modern Technical building was ready for the opening of school in September, 1930, and the school schedule was reestablished on an 8:15 to 1:55 basis.

## *Depression and War*

The decade that followed brought two new problems for the administration — industrial depression and an ever-increasing enrollment. School department budgets were slashed but every effort was made to give Durfee pupils of that era the same opportunities their predecessors had enjoyed. Teachers worked with larger classes for lowered salaries; pupils shared the burden of homes where there was little or no income — yet there was no lowering of standards. Practical, common sense leadership, combined with the cooperative efforts of faculty and student body, kept the spirit of Durfee high. Indeed, it was in that period that a student was inspired to write our Durfee Alma Mater:

*High aloft we'll lift her banner  
Bright with Durfee's hue.*

The tremendous task of winning World War II involved every phase of American activity, education not excepted. Principal Carroll took the lead in gearing the school to the war effort — carefully planning the use of the school's facilities for the civic good. With the cessation of hostilities, Durfee's doors were open to veterans



# ACCOMPLISHMENT

who wished to complete their high school education or to make further preparation for college. Those who availed themselves of the opportunity were impressed with the cordial reception they received from the Durfee principal and his eagerness to assist them. Eighty-five veterans received their diplomas with the Class of 1946, many of them going on to college.

These, in brief, have been the highlights of Principal Carroll's administration. At the same time, he has been an ardent advocate of extracurricular activities. Durfee's numerous clubs offer all pupils opportunities for fraternization with others whose interests are similar, and a well rounded program has been developed.

## *Alumni Field*

In the booklet published for the dedication of the clubhouse at Alumni Field in 1934, Mr. Ellis Gifford, secretary of the Alumni Athletic Association wrote as follows:

"When Mr. Charles V. Carroll assumed the principalship, the field began to assume its real place in the life of the school. To his activities in erecting the steel bleachers, buying more land, and building a quarter-mile track and finally culminating in this wonderful clubhouse, Alumni Field owes its present position of being one of the best high school athletic fields in this part of the country . . ."

An athlete in his school and college days and later coach of all sports at Woonsocket High, Mr. Carroll has been particularly interested in developing Alumni Field. Visitors to the Elsbree Street stadium today find a modern, well equipped recreation field — a far cry from the lot of other years, with its dilapidated fence and an abandoned schoolhouse serving as a clubhouse. The present clubhouse was built after a city-wide drive for funds — generously contributed to by prominent local citizens.

The renewed interest in Durfee sports following the Hilltoppers' defeat of New Bedford on Thanksgiving Day, 1944, brought a pressing demand for a larger seating capacity. Section after section of bleachers was added until the present capacity of 8,000 was attained. Other improvements included the installation of a lighting system for night games, new tickets booths, accommodations for press and radio, a public address system, and more recently, the purchase of land immediately south of the field for a practice field.

## *Preparation for Life*

Principal Carroll, we believe, has kept in mind at all times the primary reason for any school's existence — the preparation of boys and girls for a good, useful life. We are convinced he has worked tirelessly to maintain Durfee's excellent reputation as a preparatory school — whether for higher education or for its graduates' life work. Names of Durfee alumni may be found on the rolls of America's greatest colleges and universities, and for those who have completed their formal education here, he has tried to make their high school years valuable stepping stones to success in business or industry.

His dignity in all his relations with the student body has commanded our respect; his efficiency and zeal in directing a large public high school in a cosmopolitan city have inspired in us great admiration.

We of '50 are grateful to Principal Carroll for all he has done for Durfee, and for us.

# A Message From...

## Our Superintendent



You are to be congratulated on having successfully qualified for a diploma from your school. With the diploma you receive on Commencement Day go the very best wishes of everyone in the city. To these collective congratulations I am happy to be privileged to extend my own.

To many of you there will be other graduations, and for all of you, other periods of triumph, but none of them will have quite the same meaning as does this one. For this marks in a very special way your taking up the privileges and responsibilities of manhood and womanhood. Certainly there is very little needed by our society more than young, well-trained men and women of character and spirit. Fundamental to our belief in a democratic and God-fearing community and nation is the fact that each individual has dignity and the worth, the true measure of which will mark the success or failure of our ideals. We have every confidence in you, knowing that in your great hopes and high standards go the hopes and standards of all of us.

Sincerely yours,

*William S. Lynch*

Superintendent of Schools.

# FACULTY

CHARLES V. CARROLL, *Principal*

HERBERT W. PICKUP, *Vice-Principal*

RALPH M. SMALL, *Vice-Principal*

MARY LEE, *Dean of Girls*

THOMAS F. DORAN, *Assistant Director of Vocational Guidance*

Louis A. Allard  
Myron T. Ashley  
Loretta R. Belmont  
Eugenie W. Bent  
Paul G. Buckley  
M. Dolores Burns  
Emily B. Campbell  
Joseph O. Carroll  
Mildred V. Carroll  
Winifred F. Chase  
William M. Cleare  
Lillian F. Cole  
James F. Conlin  
Mary B. Connors  
Berton Cook  
Mary F. Corcoran  
Angeline B. Crispo  
John T. Crowley  
Joseph B. D'Adamo  
Margaret G. Dailey  
Edna U. Delahanty  
Margaret G. Doran  
Ruth N. Dow  
Edward B. Downs  
Romeo J. Dufour  
Ralph J. Fletcher  
Carrie T. Foulkes  
Virginia W. Frost  
Florence M. Burns, Clerk  
Lauretta L. Butler, Clerk

Elinor F. Gilbert  
Frederick J. Gottwald  
Mary C. T. Grandfield  
Marjorie Gray  
Thomas W. Hammond  
Alice C. Harrington  
Frederick J. Harrington  
John J. Harrington  
Margaret M. Harty  
Joseph R. Hathaway  
George C. Hoar  
Katherine L. Hogan  
Mildred A. Hogan  
Mary E. Judge  
Margaret F. Keefe  
Helena A. Kelley  
Daniel Kelly  
John E. Kiley  
Alice G. Langford  
Joseph J. Lawlor  
Elizabeth L. Leonard  
Katherine F. Lomax  
Margaret F. Lowney  
Harry P. Lynch  
Margaret E. Macdonald  
Grace L. Martin  
Anna G. McCarty  
Rose E. McHale

E. Estelle Miles  
George A. Mitchie  
Stephen Nawrocki  
Ruth W. Newkirk  
Caesar Nobrega  
William A. Nugent  
Catherine O'Brien  
Anne L. O'Neil  
Margaret H. Powers  
Maybelle E. Ramsay  
Antonio A. Serpa  
Marie V. Shalloo  
Henry J. Shea  
Charles D. Smith  
Hilda I. Smolensky  
Anna L. Sullivan  
Dorothy C. Sullivan  
Helena V. Sullivan  
Marian R. Thompson  
Marion L. Torphy  
Louis J. Urban  
Frederick H. Vinecombe  
Barbara Wellington  
Margaret J. Whalon  
A. Wilson Whitman  
Amasa F. Williston  
Helena H. Withrow  
  
Anne T. Coughlin, Clerk  
Kathryn A. Lenehan, Clerk

Lillian Wightman, Matron



# HALL OF FAME

## Ten Highest Ranking Seniors

BARBARA COHEN

ALFRED WONG

RUTH BALLWEG

ROCHELLE LUBINSKY

GORDON DEAN

DOLORES MARTIN

JOAN E. HOYLE

HILDA MADEIROS

CHARLES ISHERWOOD

IRENE VICTORINE

## Class Officers

HERBERT CHASE, President

CLAUDETTE GAGNON, Vice-President

VELMA TRAVERS, Secretary

## President of the Home Room Directors

ROBERT PONTE

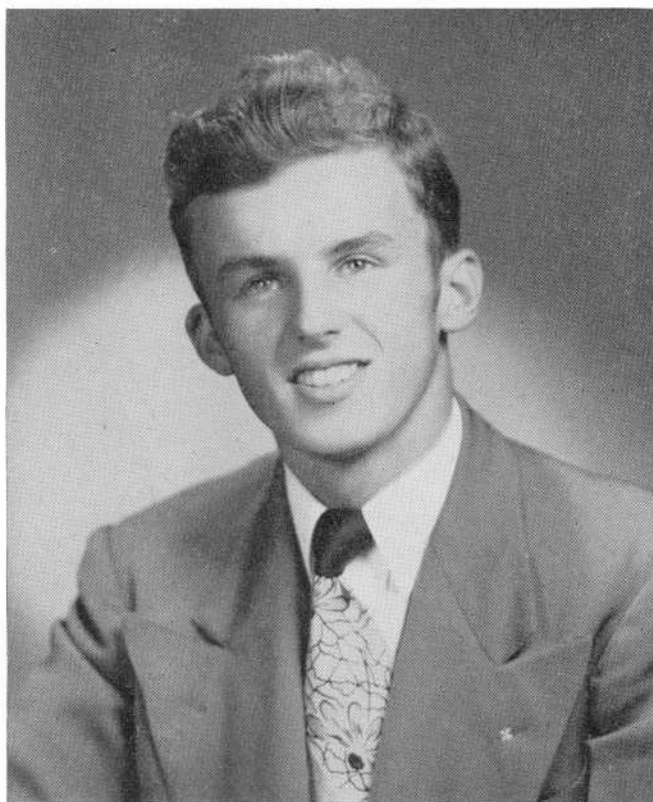
## President of the Students Activities Association

JOHN F. McMAHON

## Editor of the Hilltop

BARBARA COHEN

# CLASS OFFICERS



HERBERT CHASE  
*President*

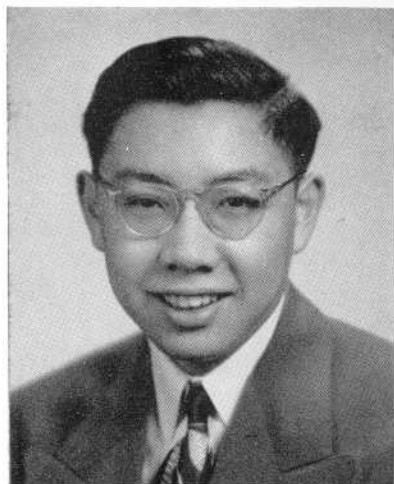


CLAUDETTE GAGNON  
*Vice-president*



VELMA TRAVERS  
*Secretary*

# STAFF OF THE



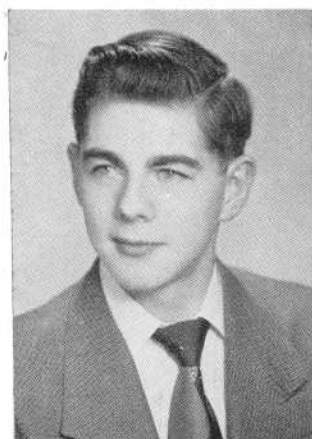
ALFRED WONG  
*Assistant Editor*



IRENE VICTORINE  
*Editor*



ROCHELLE LUBINSKY  
*Assistant Editor*



ARTHUR KING  
*Sports Editor*



NANCY McDONALD  
*Artist*



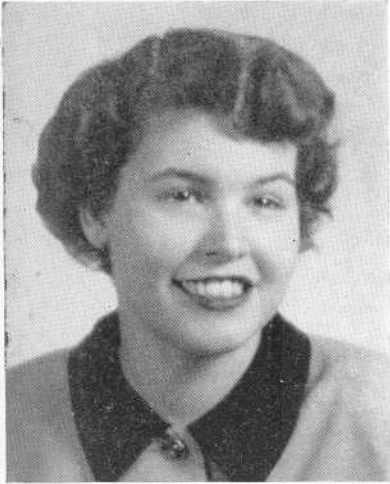
SYDELL LEVIN  
*Artist*



WILLIAM LaROCHELLE  
*Artist*



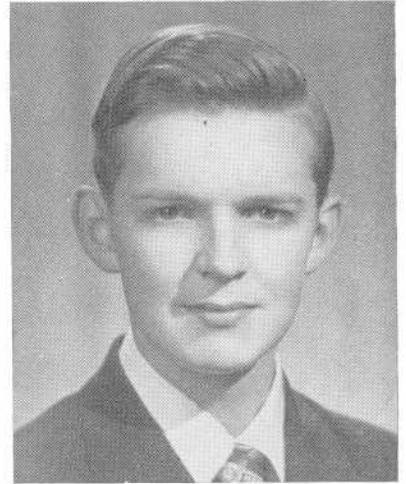
# RECORD BOOK



MADELINE AMARAL  
*Asst. Business Manager*



LILLIAN GRAY  
*Business Manager*



WILLIAM GOODRUM  
*Asst. Business Manager*



SARAH KITCHEN  
*Typist*



DONALDA LEVRAULT  
*Typist*



FLORENCE SERAFIN  
*Typist*



SALLY KABALKIN  
*Typist*

# F R E S H M E N

Perhaps it will be a pleasure in years to come to recall the highlights of our high school days, so, beginning here, we set down the story of the four years of Durfee history which we of '50 helped to make.

Our first few days were the toughest, weren't they? Instead of the royal welcome we expected on entering high school, we got "get-out-of-my-way" looks from supercilious seniors and side glances from gesticulating juniors. Yes, we were quite dejected with all the rules and regulations we had to learn.

During our first year we noticed the arrival of 160 of "Kilroy's Buddies." These, of course, were vets who "invaded" Durfee with books, pencils, notebooks, and all the other "weapons" necessary to "conquer" an education.

"Times change and we change with them." That is a familiar saying which is especially prevalent in women's fashions. This was proved to be true in Durfee in 1946 when the fad was jacquard sweaters and wide belts, and black suede flat heels were the latest campus rave. However, these were only a wee few, as far as we girls were concerned.

We probably all remember the Get-Acquainted Dance, which certainly fulfilled its purpose. It was almost impossible to ignore the person whose elbow was in your backbone, whose foot crushed your toes, and whose hips nearly sent you sprawling. It was almost impossible not to get acquainted with anyone who did all that.

We certainly were freshmen just in bloom, especially during the election of class officers. Although there weren't too many candidates, we elected as president, Barbara Coffey; vice-president, Ann B. Rose; secretary, Delores Texeira, and S. A. A. councilor, Louis Cabral.

We'll never forget our big disappointment when Durfee bowed to New Bedford in the Thanksgiving Day Game, 13-7. This was made up for, however, when Durfee won the Headmaster's Tournament at Boston Garden, which was a new distinction as well as a new thrill for Durfee followers.

Then there was the Clean-Up-Drive, a contest by the Health Club. The winner from the freshman class was Gertrude Cayer, who received a year's subscription to the Hilltop.

One of the many festivities we were unused to was the singing of Christmas carols in the corridors. We were pleased to find out that this was customary every Yuletide.

We are very proud to announce that two freshmen, Mary Theresa Oliveira and Charles Isherwood, attained the All-A List.

# SOPHOMORES

As sophomores, many of us were newcomers to Durfee for we had entered from junior high. Although it took us a few days to find our way around school, we finally became accustomed to our new surroundings and took an active part in many of the activities going on about us.

September found Durfee losing its first football game of the season to East Providence. By the end of November however, we had won the remainder of the games to annex our first Class C Championship. Included among the gridsters were sophomores Tex Bramblett, Jeff Sullivan, Gil Medeiros and Bob Dunlop. November was also the month for report cards. Twelve sophomores attained All-A honors, while 70 made the Principal's List the first term.

In December, the music department presented its annual Christmas concert, in which many of us took part.

About this time, basketball became our great interest. The Hilltoppers started the season well by beating Providence Central 64-32. This team swept through the season undefeated and thus captured the Bristol County Championship. This outstanding quintet defended its Eastern Massachusetts Crown by trouncing Everett High 39-27 on March 13, 1948 at the Boston Garden. The Hilltoppers travelled to Boston again the next week and defeated Hillhouse High 41-30 in the finals of the N. E. Tournament to become the first Massachusetts team in 23 years to cop the New England title.

The Dramatic Club's big production of the year was "Junior Miss". It was soon learned that there were some actresses and actors in the Class of '50 for Claire Galland, Ruth Moss, Harriet Lifrak, John Corea, Lew Nadien, Carl Schweber and Robert Higgins displayed their talents in the play.

In the spring, Durfee's music department added another artistic triumph to its long list of successful productions when it presented "The Bohemian Girl" in St. Anne's Auditorium.

Sophomore class officers were Frank Hadley, president; William Fletcher, vice-president; Delores Texeira, secretary; Harold Katzman, secretary of the S. A. A.; John McMahon and Barbara Coffey, S. A. A. councillors.

Several school dances were held this year. Among these were the "Get Acquainted" Dance, Pigskin Hop, Mid-Winter Hop, and the Record Book Dance.

We weren't too sorry when June arrived because we knew that we'd have two more happy years in B. M. C. D.



# J U N I O R S

As we look back on 1948-1949, we find that we all wore a new air of importance. We were juniors, upperclassmen, older and more important than the sophomores and freshmen. We also played a more important role in the activities in Durfee.

The football team provided many thrilling games in compiling a record of eight wins and two defeats to retain the Bristol County Championship. Outstanding juniors on this team were Tex Bramblett, Bob Dunlop, Ernie Elias, Brud Hadley, Jeff Sullivan and Dick Torchia. The main social events of the fall were the Get-Acquainted Dance and the Pigskin Hop, both sponsored by the S. A. A., and the Thespian's performance of T. N. T.

Several additions were made to the list of S. A. A.-sponsored clubs, namely the German Club, the La Petite Cercle Francais, the French Club, and the Records Club. When time for report cards came along, the juniors placed seven on the All-A list and 39 on the Principal's List.

December brought the Dramatic Club's performance of "Alice In Wonderland" and the Music Department's wonderful Cantata, "The Christmas Story". The main interest of school was now centered on the basketball team, which compiled a record of 16 wins and three defeats to retain the Bristol County championship and gain a bid to the Tech Tourney. They were defeated by Somerville in one of the most thrilling games of the tournament. On the social calendar for the winter we found the S. A. A.'s Gold Rush Dance and the Dramatic Club's Curtain at Eight performance of "Our Town".

In spring, there came a series of assemblies, social events and performances. Main events were the Officers' Banquet, the Speech Social, and the Record Book Dance. Performances were the Varsity Club's show, Varsity Night and the Dramatic Club's Hilltop Review. Jimmy Dean walked off with first prize at the latter.

In May we had our Junior Prom, the highlight of the social events of the year, and our elections. Winners were Herbert Chase, president; Claudette Gagnon, vice-president; Velma Travers, secretary; John McMahon, president of S. A. A.; Charles Moran and Jane LaRocque, councillors; Irene Victorine, Editor of the Record Book. During this month 23 juniors were elected to the National Honor Society. In June, Barbara Cohen was named editor of the Hilltop.

# SENIORS

In September, 1949, the class of '50 began its last and most thrilling year at Durfee. We became more deeply interested in the life of the school, and, as the usual activities got underway, we realized that we would have to work constantly and faithfully to attain our goal—a Durfee diploma, which would signify the successful end of an educational endeavor here.

Interest in clubs was strong this year; two new clubs, the Portuguese and the Mathematics, met the approval of the S. A. A. This organization also sponsored the Get Acquainted Dance and the Pigskin Hop, at which the football squad and the cheerleaders were feted.

The vocational guidance department helped us to consider the future more seriously when it conducted the annual Career Day. At that time we heard Principal Peter Donnelly of Rogers High and guest speakers representing business, industry, and the professions, discuss specific vocations.

Although Durfeeites couldn't boast of a championship football team, our players showed much grit and determination in tight spots. Coach Urban's fighting eleven ended the season with a record of four wins and six defeats.

During the Yuletide season, the music department presented the Christmas Story, a musical pageant consisting of five scenes centered around the Birth of Christ, in which 265 pupils participated. About this time, too, we attended the Mid-Winter Hop, featuring ballroom dancing and novel square dancing.

Good Government day brought an election of a substitute Senator and Representative, who acted for the State Legislators at sessions in the State House. Those who won those positions were John McMahon and Nancy McDonald. The finals of the senior debate tournament ended with the negative side composed of Eleanor Wyse and Eunice Evans defeating Joan Hague and Joan Hoyle. With the ending of the second term came the publication of the All-A and Principal's List, with 15 seniors on the first and 65 on the latter list.

Highly pleasing was the Dramatic Club's "Curtain at Eight" production of "Belvedere, Sitting Pretty", a three-act comedy in which Robert Higgins had the title role, assisted by Laura Ramos.

As the basketball fever mounted, we saw the quintet which Coach Urban had developed not only finish in second place in the Bristol County League, but participating in the Tech Tourney and reaching the semi-finals. After beating a fighting Waltham five, Durfee was downed 38-34 by Attleboro, with whom the Hilltoppers had previously split a two-game series during the season's play. Dick Ainsworth, captain and brilliant guard, placed on several All-County teams, in his first year of varsity ball. Dick Torchia, coming up from the reserves, also proved to be a valuable cog in Coach Urban's court machine.

As the Record Book goes to press, the entire class looks forward to all the events attendant upon graduation; the commencement exercises, the prom, and the culmination of our four years at B. M. C. Durfee High School, our diplomas.

CLASS

of

1950

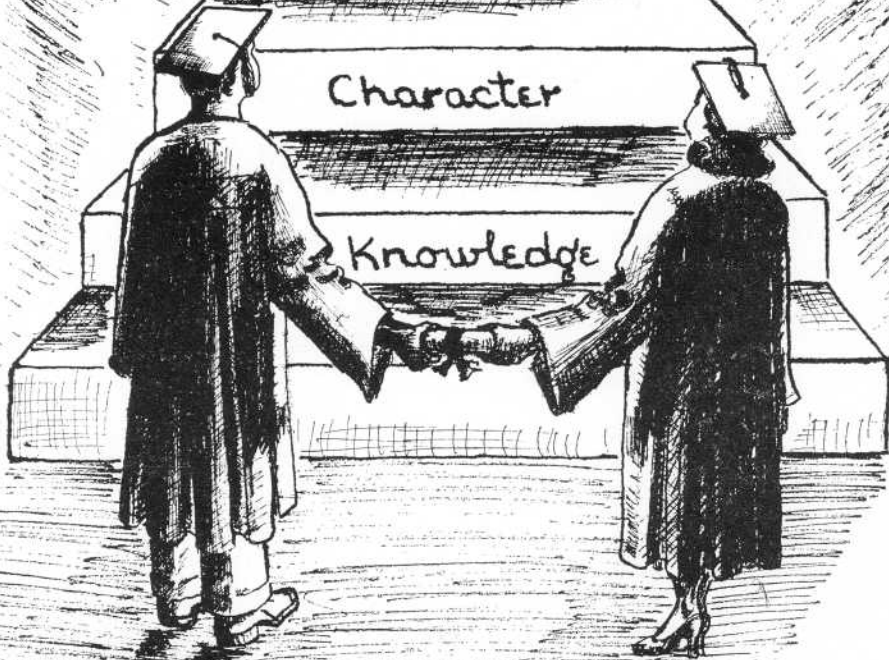
SUCCESS

Leadership

Ability

Character

Knowledge



Sydell Levin  
'50





DOLORES T. AGUIAR

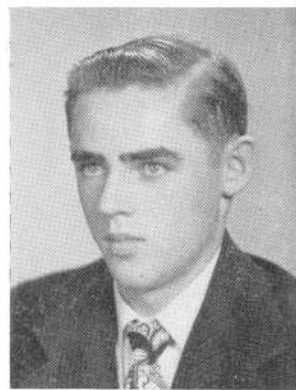
*Del*

Home Room Director 2  
Girls' Glee Club 2  
Health Officer 4  
Portuguese Club 4  
Office Aid 3  
Bank Cashier 4  
Camera Club 4  
Junior Prom Committee 3  
Senior Gift Committee 4

RICHARD AINSWORTH

*Dick*

Basketball 3, 4



SHIRLEY MAE AINSWORTH

*Shirl*

VIVIAN ALBUQUERQUE

*Turkey*

Dramatic Club 3



ALICE ALEXANDER

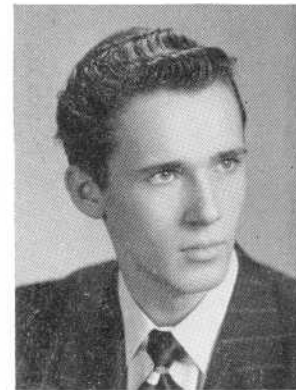
*Alex*

Portuguese Club 3, 4  
Office Aid 4

JAMES R. ALLEN

*Jim*

Home Room Director 2, 3, 4  
Office Aid 4



JANET M. ALLEN

*Applesauce*

Numeral Club 2, 3, 4	Field Hockey 2, 3, 4
Secretary 3	Captain 4
Varsity Basketball 2, 3, 4	Gym Leader 3, 4
Captain 4	Badminton 2, 3
Commercial Club 4	Softball 2, 3
Dance Committee 4	Volleyball 2, 3, 4

ARMAND M. ALMEIDA

Dramatic Club 2, 4  
Thespians 4  
Boys' Glee Club 4  
Senior Mixed Chorus 4  
Literary Club 2, 4  
Camera Club 2  
All State Chorus 4





AGNES M. ALVES

*Aggie Blue-Eyes*

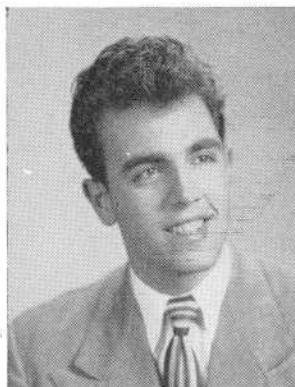
Office Aid 3  
Portuguese Club 3, 4



DELORES E. AMARAL

*Dody Del*

Health Councillor 2  
Guidance Office 2  
Cafeteria 3, 4  
Bank Cashier 4  
Portuguese Club 4



EDWARD M. AMARAL

*Mac*

MARY MADELINE AMARAL

*Madge*

Assistant Business Manager of Record Book 4  
Camera Club 2, 3  
Vice-President 3  
Commercial Club 4  
Senior Mixed Chorus 4  
Senior Girls' Glee Club 2, 3  
Junior Mixed Chorus 2  
Guidance Office 4



WILLIAM C. ANDERSON

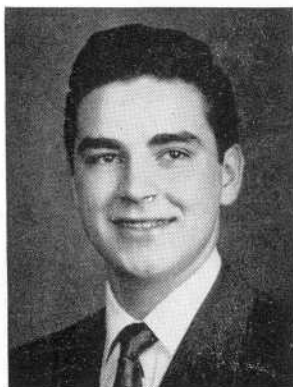
*Andy*

*Bill*

DOROTHY S. ARNOLD

*Dot*

Health Councillor 3  
Girls' Glee Club 2  
Girls' Numeral Club 2, 3, 4  
Basketball 2, 3, 4  
Junior Varsity 2  
Varsity 3, 4  
Softball 2, 3  
Field Hockey 2, 3, 4  
Bowling 2, 4  
Tennis Team 4



LEONARD R. ARRUDA

*Len*

Home Room Director 1  
Varsity Club 4  
Football 3, 4  
Band 1, 2  
Orchestra 2



ELEANOR J. AUSTIN

*El Ellie*

Commercial Club 4  
Office Aid 4



### FREDA AYASH

Home Room Director 2, 3, 4  
 Girls' Glee Club 1, 2, 3, 4  
 Senior Mixed Chorus 2, 3, 4  
 President 4  
 Business Manager 4  
 Volley Ball 2, 4 State Chorus 4  
 Basketball Scorer 4 Gym Leader 3  
 Numeral Club 2, 3, 4 Field Hockey 2, 3, 4  
 Bowling 2, 3, 4  
 Sophomore Basketball Committee 3  
 Freshman Party Committee 4

### BETTY ANN BAILEY

*Beaddy*

Girls' Glee Club 2 Field Hockey 3, 4  
 Junior Mixed Chorus 2 Softball 3  
 Girls' Numeral Club 3, 4 Volleyball 4  
 Numeral Club Basketball 3 Literary Club 4



### RUTH C. BALLWEG

National Honor Society 3, 4  
 German Club 2, 3, 4  
 President 3  
 Library Aid 4  
 Vice-President 4  
 Commercial Club 4  
 Camera Club 4  
 Girls' Glee Club 2  
 Office Aid 3, 4

### ROWENA BARISH

Dramatic Club 3, 4



### NANCY E. BATCHELDER

Commercial Club 4  
 Orchestra 2, 3, 4  
 Concert Mistress 4  
 Ensemble Club 3, 4  
 All State Orchestra 2, 3, 4  
 Band 3, 4

*Nancy*

### WILDA Y. BAZINET

*Willie*



### ARTHUR L. BERGERON

*Commando*

### DOROTHY B. BERNAT

*Dottie*

Girls' Glee Club 2, 3, 4





ROBERT J. BERUBE  
*Be-Be Bob*



EUNICE E. BOARDMAN  
*Eunie*  
Cafeteria 2, 3, 4



WILLIAM H. BOTELHO  
*Bill Buff*



JOSEPH J. BOUVETTE  
*Joe Bo*



MARY W. BOWEN  
*Whit Mary-Whit*  
Senior Mixed Chorus 3, 4  
Girls' Glee Club 2, 3, 4  
Junior Mixed Chorus 2  
Camera Club 4  
Literary Club 4



ARLENE C. BOWSER  
*Al Skippy*  
Girls' Glee Club 4  
Speakers' Bureau 3, 4



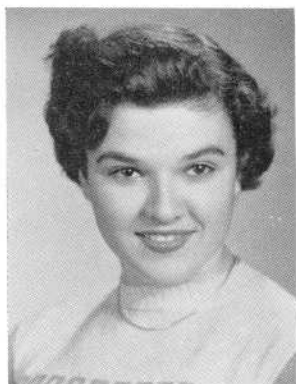
LOIS BOYD  
*Lo*  
Office Aid 4

COLQUITT R. BRAMBLETT  
*Tex Kit*  
Football Team 2, 3, 4  
Health Councillor 2  
Varsity Club 3, 4  
Track Team 2, 3, 4



*Tex Bramblett*

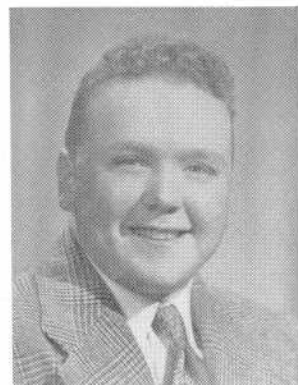




CLAUDIA S. BRANDAO

*Corky Farmer*

Portuguese Club 3, 4  
Office Aid 4  
Health Officer 3



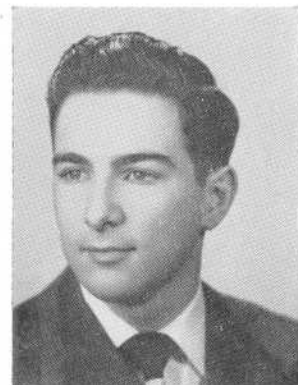
KENNETH J. BRAY

*Ken*

Baseball Manager 4  
Assistant Manager 3  
Varsity Club 4



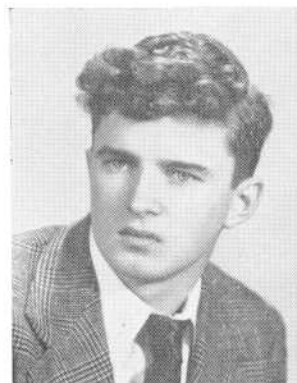
SHIRLEY V. BRENNAN



AARON BROWN

*Brownie*

Track Team 3



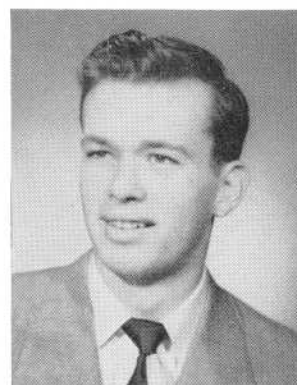
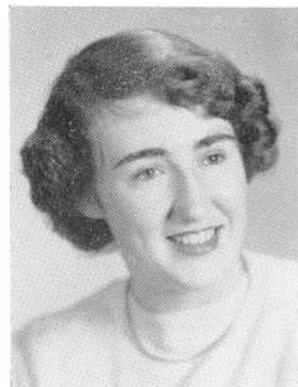
CALVIN E. BROWN

*Cal*

CAROLYN BROWNELL

*Carrie Lyn*

Tennis Team 4  
Girls' Glee Club 2  
Girls' Numeral Club 2, 3, 4  
Field Hockey 2, 3, 4  
Basketball 2, 3  
Varsity Basketball 4  
Volleyball 2  
Bowling 2, 4  
Softball 3, 4  
Home Room Director 3, 4



NORMAN A. BURNS

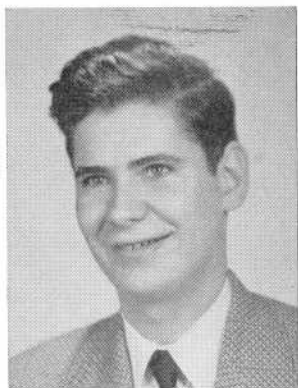
*Burnzie Swisher*

Tennis Team 3  
Basketball Team 2, 3, 4  
Football Team 2  
Varsity Club 3, 4  
Home Room Director 3  
Junior Prom Committee 3



JOHN CABECEIRAS

*Cabby*



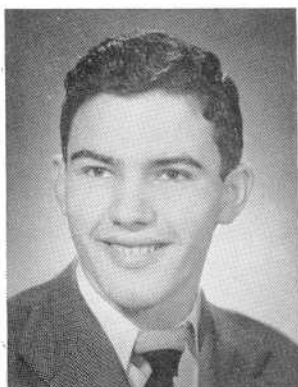
LOUIS E. CABRAL

*Louie*

Dramatic Club 2, 3, 4  
 Thespians 3, 4  
 Camera Club 1, 2  
 Student Council 1  
 Boys' Glee Club 1, 2, 3  
 Chorus 1, 2, 3  
 Speakers' Bureau 3, 4  
 Portuguese Club 3, 4

MARGARET SYLVIA CABRAL

*Maggy*



WILLIAM CABRAL

*Bill*

Varsity Club 4  
 Football Team 2, 3, 4

GILBERT CALARA

*Gil*

Home Room Director 4



JOSEPH CAMARA

*Joe*

MILDRED ANN CAMPOS

*Millie*

Portuguese Club 3, 4  
 Health Councillor 4  
 Glee Club 2, 3, 4  
 Senior Mixed Chorus 4

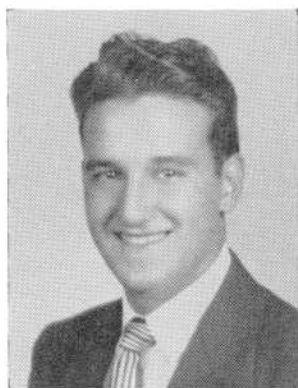


ELLEN CANTWELL

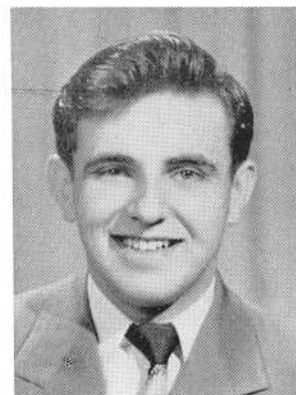
CAROLYN J. CAPSTACK

Literary Club 3, 4  
 Speakers' Bureau 4  
 Girls' Glee Club 2  
 Junior Mixed Chorus 2  
 Field Hockey 2  
 Debating Tournament 4





THOMAS JOSEPH CARREIRA  
*Tommy*



EDWARD CASEMIRA  
*Cas*



FRANCIS CASTANHO  
*Frankie*



SHIRLEY MARY CATES  
*Shirl*

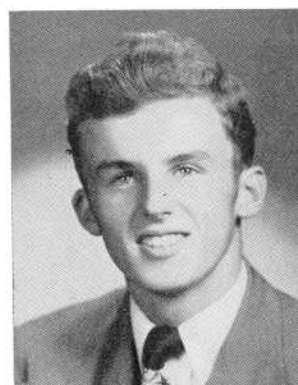
Camera Club 2  
Junior Girls' Glee Club 2  
Senior Girls' Glee Club 3  
Junior Red Cross Councilor 4  
Commercial Club 4  
Guidance Office 4



GERTRUDE A. CAYER  
*Gert Trudy*  
German Club 3



JOAN LOUISE CHAPMAN

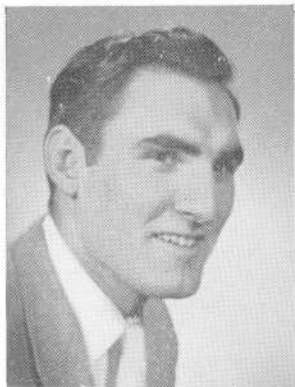


HERBERT R. CHASE  
*Skip Chasie*

Home Room Director 2  
Speakers' Bureau 4  
Sanco 4  
Student Council 4  
Class President 4  
Office Aid 3, 4



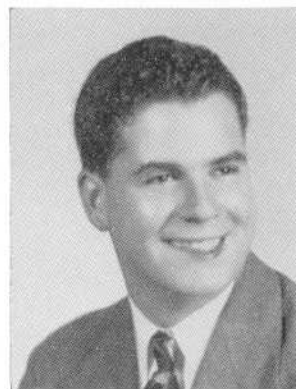
EVELYN L. CHEW



WILLIAM DONALD CLEGG

*Cleggee*

Football 1, 2, 3, 4  
Varsity Club 4  
Health Councillor 3



WILLIAM M. CLEMENT

*Cement*

Drum Major of the Band 1, 2, 3, 4  
Home Room Director 1, 3  
Portuguese Club 3  
Librarian of the Band 4  
Commercial Club 4  
Office Assistant 1, 2, 3



NANCY E. CLIFTON

*Nance*

Camera Club 2  
Home Room Director 3  
Drum Major 3, 4  
Cap & Gown Committee 4  
Commercial Club 4



LLOYD J. COBB



BARBARA K. COHEN

*Barb*

National Thespian Society 3, 4  
Secretary 4  
Junior Prom Committee 3  
National Honor Society 3, 4  
Editor of Hilltop 4  
Health Councillor 2  
Literary Club 2, 3, 4  
Secretary 3  
Library Aid 3, 4  
Dramatic Club 2, 3, 4  
Speakers' Bureau 3, 4  
Records Club 3, 4  
Publicity Director 4  
Sanitation Commission 4

BETTY ANN COHEN

*B. A.*

National Honor Society 3, 4  
Girls' Glee Club 2  
Cheerleader 3, 4  
Records Club 3, 4  
French Club 4  
Tennis 4  
Junior Mixed Chorus 2  
Dramatic Club 2, 3, 4  
Speakers' Bureau 3, 4



NORMAN P. COHEN

*Crusher*

Football 2, 3, 4  
Mathematics Club 4  
Track 2, 4  
Varsity Club 4



ANN M. CONROY

Girls' Glee Club 2





HARRIET M. CONSTANCE

*Connie*



WILLIAM H. COOPER

*Bill*



SHELDON D. COPELAND

*Mike*



JANICE COPLEY

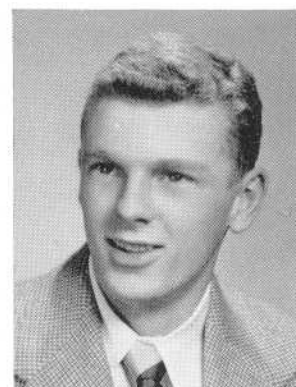
*Jan*



YVONNE G. CORBIN

*Butch*

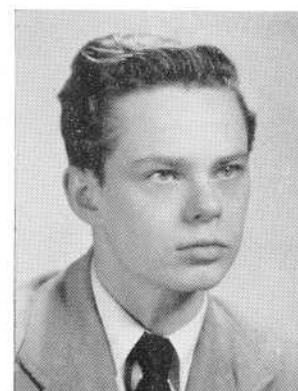
Camera Club 4  
Office Assistant 4



PAUL F. CORCORAN

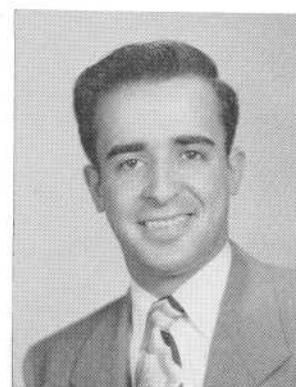
*Corky*

Boys' Glee Club 4



JOHN M. COREA, JR.

Home Room Director 2  
Dramatic Club 2, 3, 4  
Callboy 3  
National Thespian Society 3, 4  
Strategus 4



BENEDICT T. CORREIA

*Ben*



ROBERT CORREIA

*Bob*

Portuguese Club 3, 4  
Home Room Director 3



DEOLINDA M. CORVELLO

*Dee*

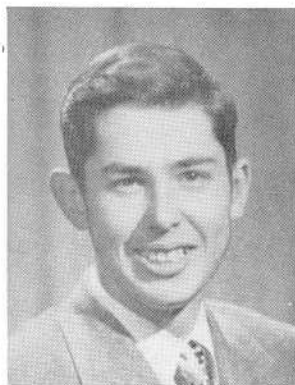
Portuguese Club 3, 4  
Commercial Club 4



EVELYN A. CORVELLO

*Eve*

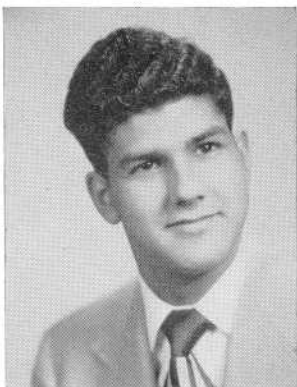
Commercial Club 4  
Portuguese Club 3, 4



WILLIAM G. CORY

*Bill*

French Club 4



ANTONE P. COSTA

*Tony*

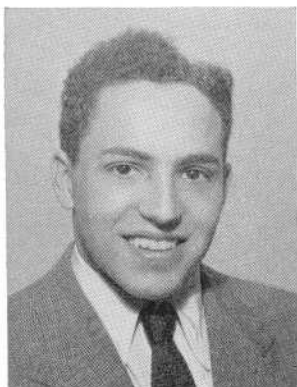
Band 2, 3, 4



ARLENE COSTA

*Lee*

Camera Club 4  
Dramatic Club 3  
Health Councilor 3



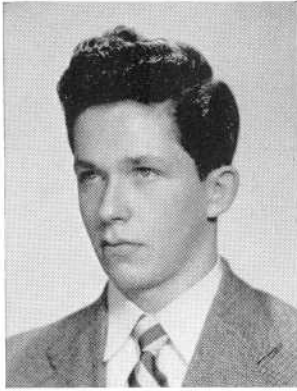
HANNIBAL F. COSTA

*Al Capone*



IRENE COSTA

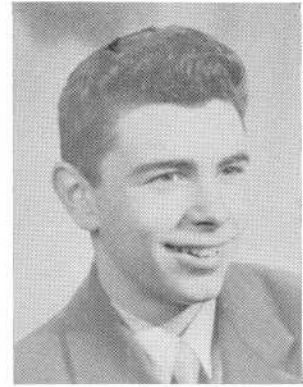
Portuguese Club 3, 4



THOMAS A. COTE

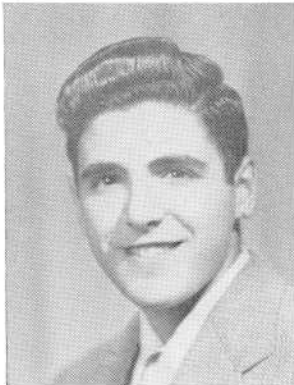
*Tom*

Senior Mixed Chorus 2, 3  
Boys' Glee Club 2, 3



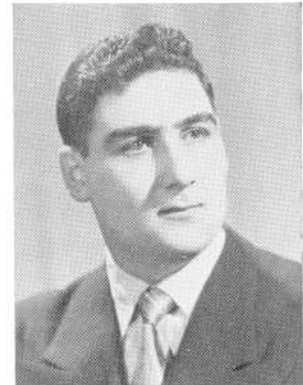
ANTHONY R. COTTA

*Dago*



EDWARD P. COURI

*Eddie*



WILLIAM COURY

*Bill*

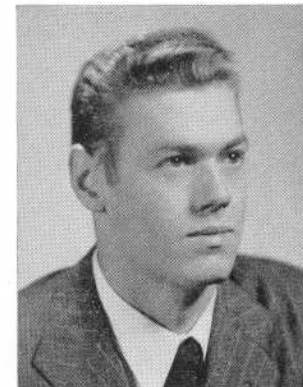
Health Councilor 1  
Home Room Director 2



ALICE ANN CRAWFORD

*Ally*

Record Club 3, 4  
Financial Secretary 4  
Literary Club 3, 4  
Field Hockey 2  
Camera Club 3, 4  
Gift Committee 4



ROY G. CROSS



RUTH J. CROWLEY

Dramatic Club 2, 3, 4  
National Thespian Society 4  
Literary Club 4  
Speakers' Bureau 3, 4  
Library Aid 3, 4  
Health Councilor 2  
Girls' Glee Club 2  
Lead in Opera "Hansel and Gretel" 2



LINWOOD W. CUNNINGHAM

*Lin*



FRED J. CYR



EDWARD V. DAILEY



LOUISE M. DAVID

*Lou*

DOROTHY H. DEAN

*Dot*

Home Room Director 3, 4  
Girls' Glee Club 2, 3, 4  
Senior Mixed Chorus 3, 4  
Tennis Team 4  
Girls' Numeral Club 3, 4  
Junior Varsity Basketball 4  
Captain 4  
Bowling 3, 4  
Field Hockey 2, 4  
Softball 2, 3  
Volleyball 4

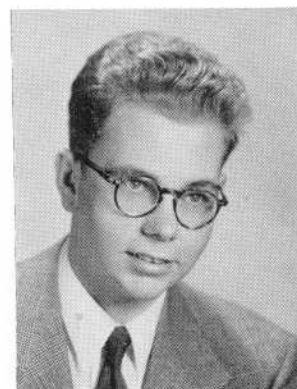
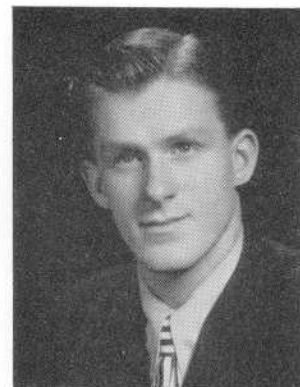


GORDON J. DEAN

Boys' Glee Club 2, 3  
Senior Mixed Chorus 3  
Junior Mixed Chorus 2  
Orchestra 3, 4  
Ensemble Club 3, 4  
String Orchestra 3, 4  
All-State Orchestra 3, 4  
National Honor Society 3, 4  
Home Room Director 4

JAMES D. DEAN

*Jimmy Hey You*



RICHARD M. DEANER

*Dick*

Danville High School  
Letterman's Club 2, 3  
Jayvee Football 1, 2  
Varsity Football 3  
Class Historian 2

ALBERT DESROSIERS

*Al*







LILLIAN S. DIAS

Cheer Leader 3, 4  
Dramatic Club 3  
Portuguese Club 4  
Camera Club 4  
Office Aid 4



EDWARD S. DICORPO

*Butch*



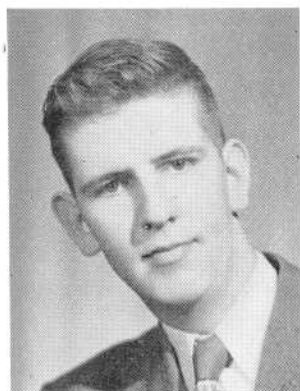
CONSTANCE D. DiGIACOMO

*Connie Jackie*

DAWNA M. DILLON

*Don*

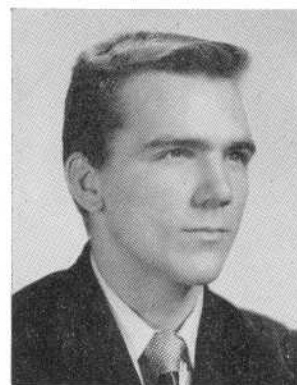
Girls' Numeral Club 3, 4  
Bowling 3  
Tumbling 3  
Softball 3  
Field Hockey 3  
Badminton 3  
Volleyball 4



JAMES E. DONNELLY

*Jim*

Health Councilor 3



RICHARD V. DOPART

*Dick*

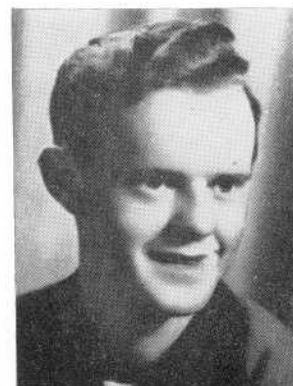
Varsity Club 3, 4  
Football 3, 4



PHYLLIS ANNE DOWD

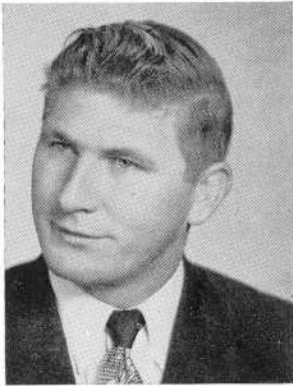
*Phyl*

Junior Girls' Glee Club 2  
President 2  
Senior Mixed Chorus 3  
Senior Girls' Glee Club 3  
Commercial Club 4  
Office Aid 4



ALBERT J. DOWNEY, JR.

*Bumper*



CHARLES W. DOYLE

*Chuck*

German Club 3, 4



DOROTHY C. DREWNIK

*Dot Dotsy*

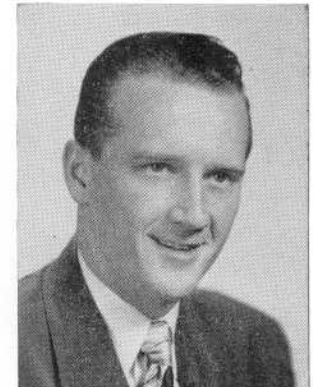
Commercial Club 4  
Camera Club 4  
Home Room Director 2



EILEEN H. DREWNIK

*Ei*

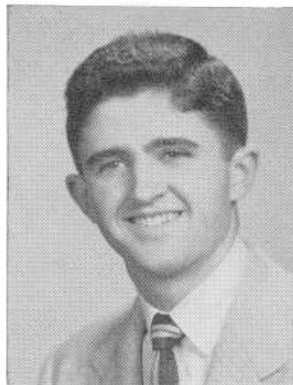
Camera Club 4



ROBERT G. DUNLOP

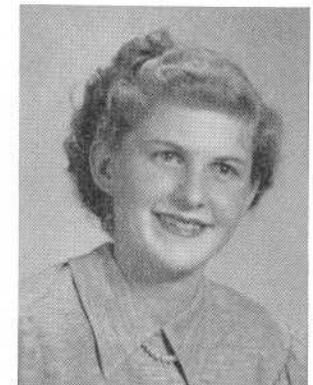
*Bob*

Football 2, 3, 4  
Baseball 2, 3, 4  
Varsity Club 3, 4  
Cafeteria 3, 4  
Speakers' Bureau 4  
Health Councilor 2  
Senior Prom Committee 4



JOSEPH P. DUNNE

*Joe*



IRENE L. DUPONT

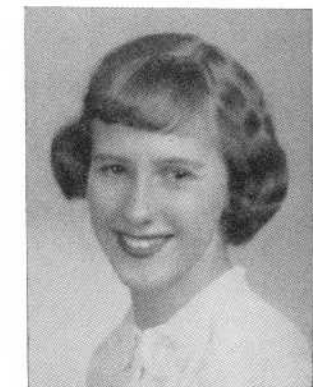
*I*



DANIEL G. DURFEE

*Dan*

Speakers' Bureau 3, 4



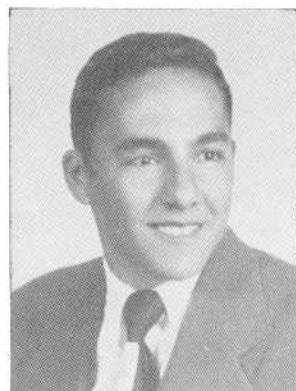
BETTY JEAN EARLEY

Field Hockey 3  
Office Aid 4

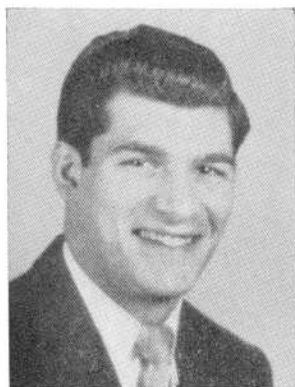


ELAINE EKLOF

Girls' Glee Club 2  
Ensemble Club 2  
Senior Mixed Chorus 2, 3  
National Honor Society 3, 4  
Library Aid 4  
Health Councilor 4  
Orchestra 3, 4



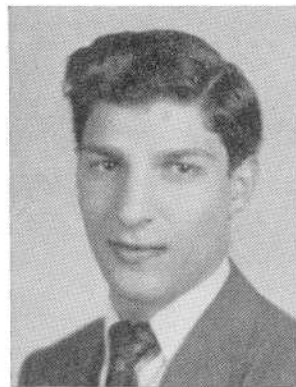
MASSOUD ELHILOW



ERNEST L. ELIAS

*Bushie Keltner*

Varsity Club 2, 3, 4  
Football Team 3, 4



MICHAEL G. ELIAS

*Mike*



CLARINDA EVANS

*Linda*

EUNICE P. EVANS

Girls' Glee Club 2  
Home Room Director 4  
Speakers' Bureau 4  
Secretary 4  
Advisory Committee 4  
Winner Senior Debating Tournament 4

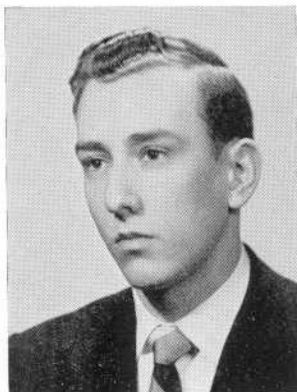


MICHAEL J. FARIS

Glee Club 1, 2, 3, 4  
Senior Mixed Chorus 4  
Portuguese Club 4  
French Club 4



GEORGIANNA FARRAH



WESLEY J. FASTIFF

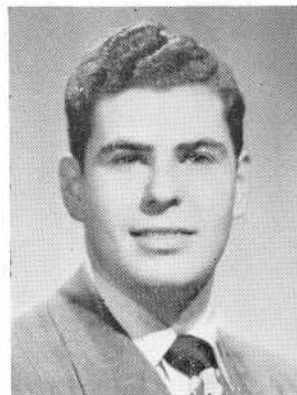
*Wes*

Camera Club 2, 3, 4  
Speakers' Bureau 3, 4  
Library Aid 3, 4  
Mathematics Club 4  
Advisory Committee 4  
Home Room Director 2, 4

DAVID B. FELDMAN

*Dave*

Junior Mixed Chorus 1  
Boys' Glee Club 1  
Camera Club 3, 4  
Vice-President 4



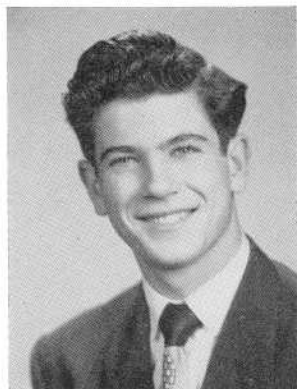
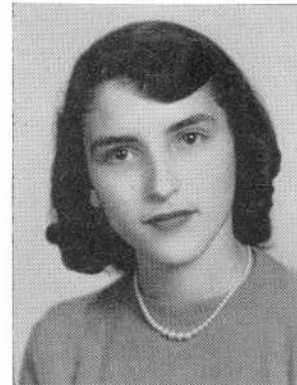
GLADYS FELDMAN

*Rusty*

Hilltop Staff 4  
Records Club 3, 4  
Literary Club 4  
Guidance Aid 2

ALICE FERNANDES

Portuguese Club 3, 4  
Commercial Club 4  
Office Aid 4



RONALD FERNANDEZ

*Fa-neek*

Camera Club 3, 4  
Portuguese Club 3, 4

JOHN E. FERREIRA

*Big John*

Dramatic Club 2, 3, 4  
Master of Lighting 4  
Thespians 3, 4  
Boys' Glee Club 2, 3, 4  
Senior Mixed Chorus 3, 4  
Junior Mixed Chorus 2  
Camera Club 2  
All State Chorus 4



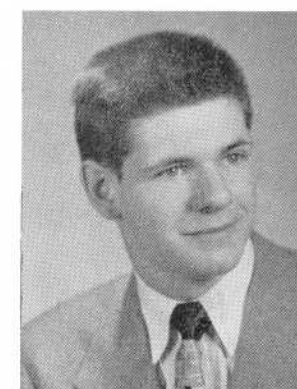
VIRGINIA T. FERREIRA

*Ginnie Sugar*

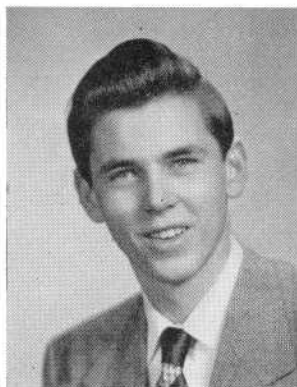
Chorus 2  
Portuguese Club 3, 4  
Records Club 4  
Office Aid 4  
Cafeteria 3, 4

WILLIAM A. FLETCHER

Home Room Director 3  
Vice-President of Class 2  
Sanitation Commission 2

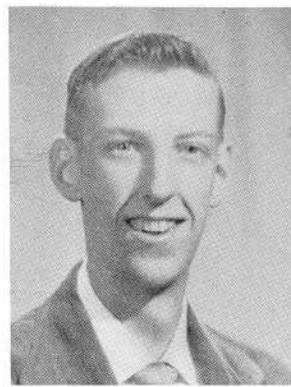






DONALD M. FLYNN

Boys' Glee Club 2  
Senior Mixed Chorus 2



JOSEPH FRANK FORSACK

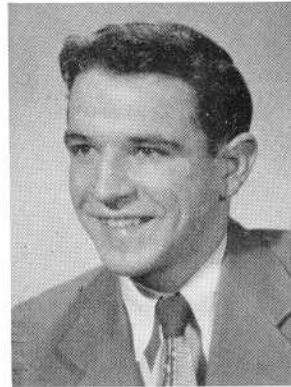
*Joe*



JOAN M. FOSS

*Jo*

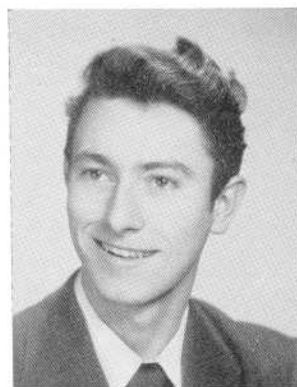
Speakers' Bureau 4  
Camera Club 3  
Orchestra 2, 3  
Literary Club 4  
Commercial Club 4



CHARLES FREITAS

*Chuck*

Track 3  
Hilltop Staff 4  
Boys' Glee Club 2  
Junior Mixed Chorus 2



JOHN ANTHONY GAGLIARDI

*Johnny*

Orchestra 2 Band 2, 3, 4 Traffic Squad 2

CLAUDETTE MARIE GAGNON

*Gan*

Health Club 2  
Sanitation Commission 2, 3, 4  
Home Room Director 2, 3, 4  
Senior Mixed Chorus 3  
Girls' Glee Club 2, 3  
Class Vice President 3, 4  
Junior Prom Committee 3  
Senior Prom Committee 4  
Senior Advisory Committee 4  
National Honor Society 3, 4  
Ring Committee 3



ELAINE B. GALITSKY

Record Club 3, 4  
Literary Club 2



CLAIRE GALLAND

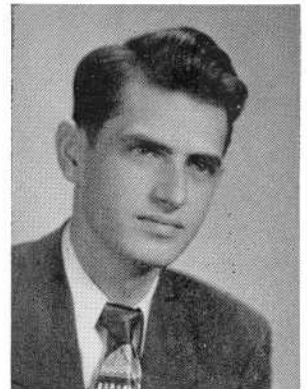
Dramatic Club 2



GABRIELLE G. GAUCHER  
*Gabby Gay*

RAYMOND G. GAUTHIER  
*Ray*

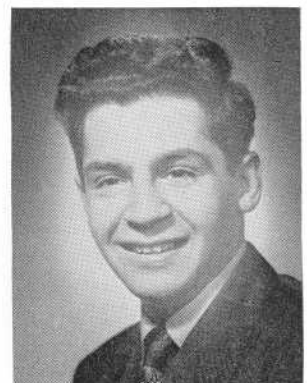
Health Councillor 2, 3  
Home Room Director 4



JOHN MICHAEL GEORGE  
Home Room Director 1, 2

JOHN GIANAKOS  
*Galloping Greek*

Varsity Club 4  
Track 2, 3, 4  
Football 2, 3, 4

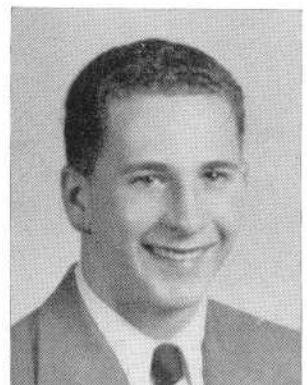


JOAN P. GIFFORD  
*Joannie*

Home Room Director 1  
Junior Mixed Chorus 1, 2  
Senior Mixed Chorus 3  
Girls' Glee Club 1, 2, 3  
German Club 2, 3

STEPHEN B. GOLDBERG  
*Steve*

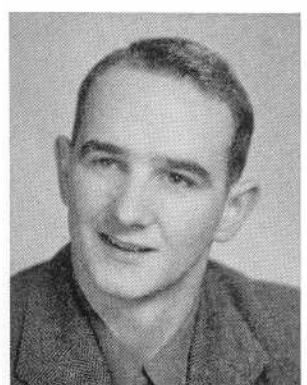
Home Room Director 3  
Vice-President of Class 3  
Speakers' Bureau 4  
Basketball Team 2, 3, 4



WILLIAM P. GOODRUM  
*Bill*

Orchestra 2, 4  
Band 2, 4  
Ensemble Club 3, 4  
Home Room Director 2  
Health Councillor 4  
Assitant Business Manager of Record Book 4

EUGENE M. GRACE  
*Gene Con Beak*





JOAN I. GRAY

Girls' Numeral Club 3, 4  
Bowling 3, 4  
Softball 3, 4  
Field Hockey 4  
Basketball 3  
Bank Cashier 4

LILLIAN C. GRAY

*Lil*

Commercial Club 4  
Literary Club 4  
Dramatic Club 4  
Business Manager of Record Book 4  
Senior Mixed Chorus 4  
Senior Girls' Glee Club 3, 4  
Junior Girls' Glee Club 2



RUTH THEA GREENBAUM

*Ruthie*

Volleyball 2, 4  
Camera Club 3, 4  
German Club 3, 4  
Gym Leader 3, 4

MARILYN L. GREENBERG

*Mac*

Records Club 3, 4  
Camera Club 4

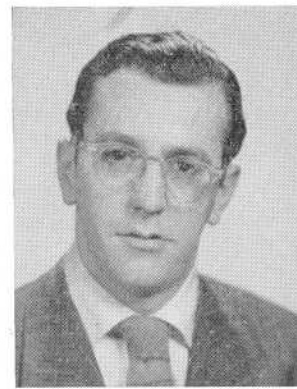


PHYLLIS LETA GREENBERG

*Phyl*

Junior Mixed Chorus 2  
Girls' Glee Club 2  
Record Club 3, 4  
Hilltop Staff 4  
Mathematics Club 4

GEORGE A. GRENON

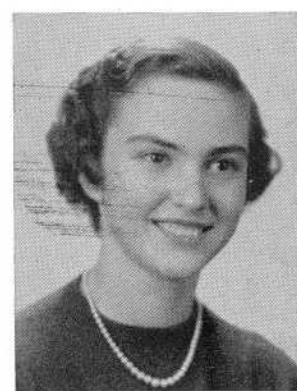


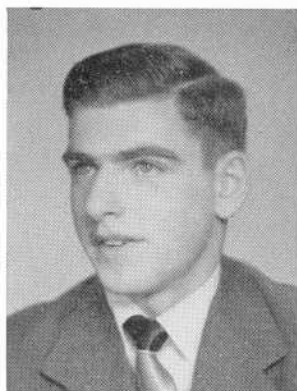
PAUL B. GROZEN

Camera Club 2, 4  
Mathematics Club 4  
Tennis Team 3, 4  
Track Team 2, 3  
Varsity Club 4

JOAN GURGON

Home Room Director 2  
Senior Gift Committee 4  
Commercial Club 4  
Office Aid 4  
Camera Club 2, 3  
Senior Mixed Chorus 3  
Senior Girls' Glee Club 3  
Girls' Glee Club 2





GILBERT R. HADAD

*Gil*

FRANK B. HADLEY

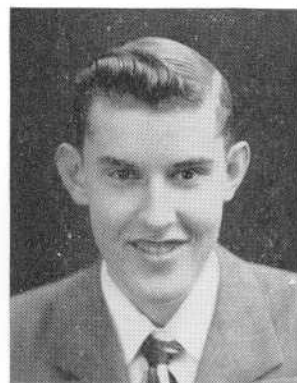
*Brud*

Football 2, 3, 4  
Basketball 2, 3, 4  
Track 2  
Class President 2, 3  
Sanitation Committee 2, 3  
Chairman 3  
Varsity Club 3, 4  
Student Council 2, 3



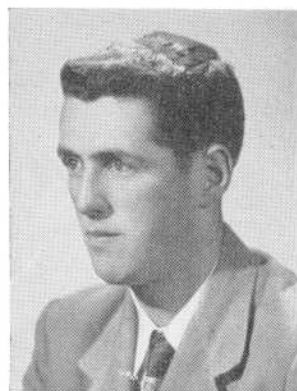
JOAN MARIE HAGUE

Camera Club 2, 3  
Dramatic Club 2, 3  
Home Room Director 4  
Senior Debating Tournament Finals 4



ALBERT R. HALBARDIER

*Al*



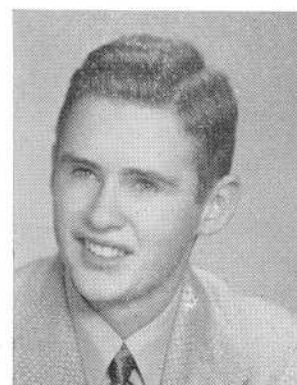
GERALD M. HANLEY

*Gerry Mike*

FRANCES A. HARDRO

*Frannie*

Home Room Director 2  
Junior Girls' Glee Club 2  
Senior Girls' Glee Club 3  
Senior Mixed Chorus 3  
Ensemble Club 3  
Commercial Club 4  
Office Aid 4



JOHN J. HARGRAVES

Boys' Glee Club 2, 3  
Junior Mixed Chorus 2  
Senior Mixed Chorus 3



ALICE E. HARRISON

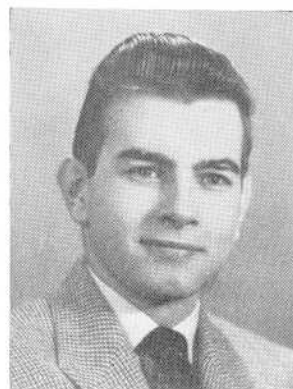
*Al*

Junior Mixed Chorus 2  
Sophomore Girls' Glee Club 2  
Senior Girls' Glee Club 3, 4  
Senior Mixed Chorus 3, 4



JOAN M. HEINKE

German Club 2, 3  
Girls' Numeral Club 3, 4  
Volleyball 2  
Field Hockey 3  
Bowling 3, 4  
Gym Leader 3, 4  
Softball 4  
Basketball Coach 3



ROBERT HIGGINS

*Bob*

Dramatic Club 2, 3, 4  
Vice-President 4  
National Thespians 3, 4  
President 4  
Literary Club 4



GEORGE R. HIGGINSON

*Higgie*

Home Room Director 2



WILLIAM B. HIGSON

*Bo Bill*



GRACE ELSIE HOSKIN

Senior Mixed Chorus 3, 4  
Senior Girls' Glee Club 3, 4  
Junior Mixed Chorus 2  
Sophomore Girls' Glee Club 2



JOAN BARBARA HOYLE

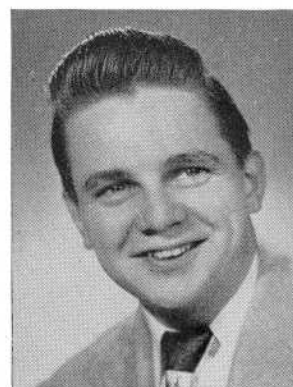
National Honor Society 3, 4  
Library Aids 2, 3, 4  
President 4  
Speakers' Bureau 4  
French Club 3, 4  
Secretary 3  
Debating Tournament Finals 4



DOROTHY J. HRICIU

*Dottie Tish*

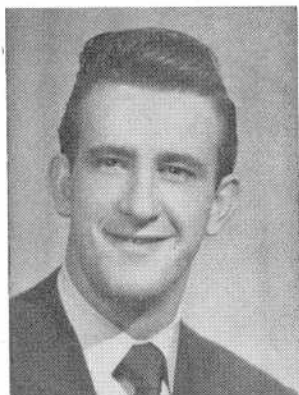
Home Room Director 2



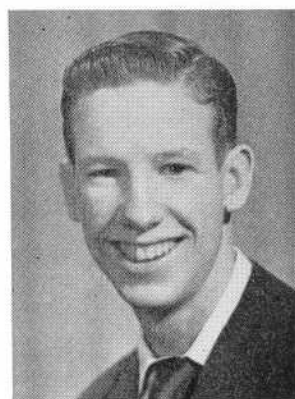
EDMUND JAMES HUMPHREYS

*Hunza Eddie*

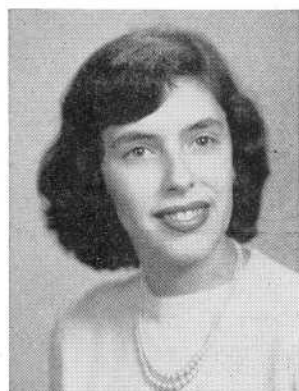




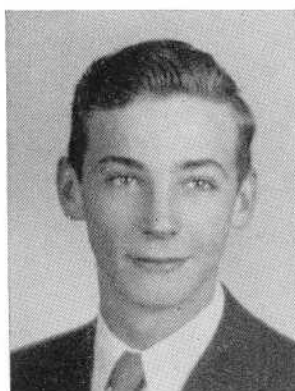
JOHN F. HURLEY  
*Jake*



DONALD J. HUSSEY  
*Don Bogie*  
Home Room Director 4

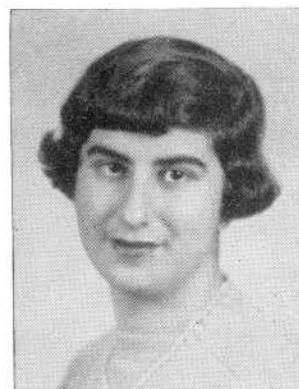


DEOLINDA M. ISABEL  
*Leana*



CHARLES S. ISHERWOOD  
*Isb*

Library Aid 2, 3, 4  
Speakers' Bureau 4  
Student Council 4  
National Honor Society 3, 4  
President 4



LUCILLE DIANE JABBOUR  
*Lou*

Girls' Glee Club 1  
Junior Mixed Chorus 1  
Senior Mixed Chorus 2  
German Club 2, 3, 4  
Junior Prom Committee 3  
Mathematics Club 4  
Record Club 4



GLORIA JACKSON  
*Jack*  
German Club 3, 4



WILLIAM F. JACKSON  
*Bill*



MARCIA S. JENCKS  
Office Aid 4  
Commercial Club 4



MARILYN ROSE JOEL

Camera Club 2

CAROL J. JONES

*Jonesie Twinnie*

Record Club 4  
Camera Club 3  
Speakers' Bureau 4  
Office Aid 3  
German Club 2, 3, 4  
Mathematics Club 4  
Senior Advisory Committee 4  
Home Room Director 4



JOYCE J. JONES

*Jonesie Joy Twinnie*

German Club 2, 3, 4  
Speakers' Bureau 4  
Vice-President 4  
Senior Prom Committee 4  
Record Club 4  
Mathematics Club 4  
Camera Club 2, 3



SARAH E. JONES

*Jonesie*

Class Secretary 3  
Home Room Director 3  
Junior Prom Committee 3  
Ring Committee 3



CONSTANCE G. JUNEAU

*Connie*

Senior Mixed Chorus 3, 4  
Commercial Club 4  
Girls' Glee Club 2, 3, 4  
Ensemble Club 3, 4  
All State Chorus 4



SALLY KABALKIN

Orchestra 2, 3  
Record Club 4  
Literary Club 2  
Commercial Club 4  
Advisory Committee 4  
Junior Prom Committee 3  
Staff Typist 4



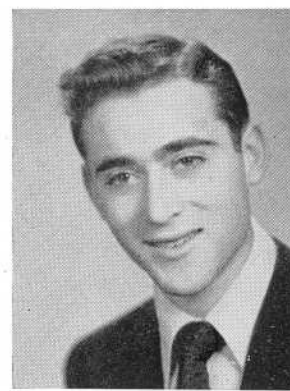
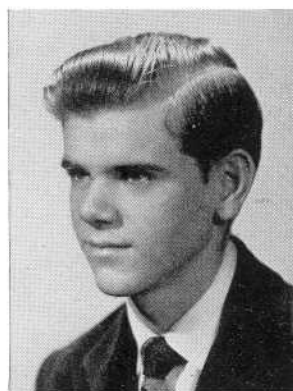
RICHARD KANUSE

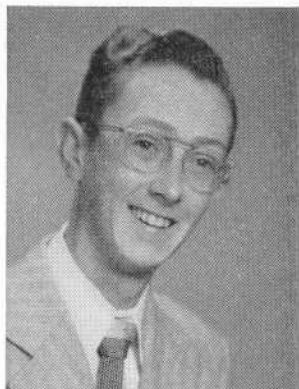
*Dick*

EDWARD J. KAPLAN

*Punchy Jake*

German Club 3  
Camera Club 3  
Traffic Squad 2  
Student Manager of Baseball Team 2  
Mathematics Club 4  
Financial Secretary 4



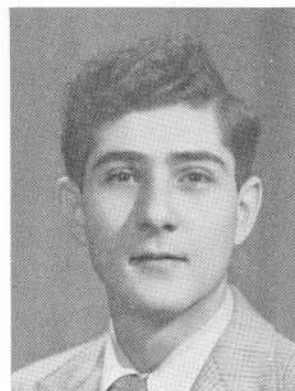


GEORGE E. KARCHER

German Club 3  
Home Room Director 4

HAROLD KATZMAN

Student Council 2  
Secretary 2  
Dramatic Club 3, 4  
Thespians 3, 4  
Speakers Bureau 2, 3, 4  
Mathematics Club 4



JANICE B. M. KAY

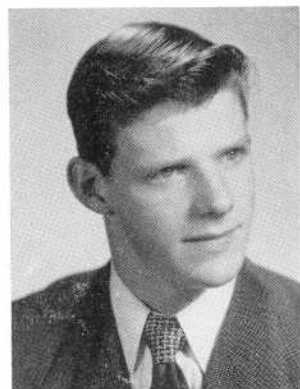
*Jan*

Home Room Director 1, 3  
Junior Mixed Chorus 1  
Girls' Glee Club 1  
Dramatic Club 3  
Health Councillor 4  
Office Aid 4

JEAN ANN KEARNS

*Kearnsie*

Home Room Director 2  
French Club 3  
Vice-President 3  
Mathematics Club 4

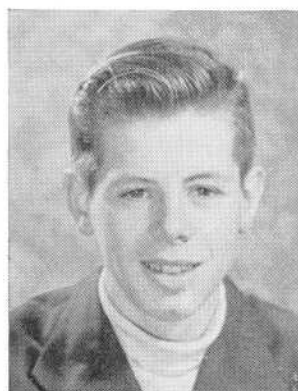
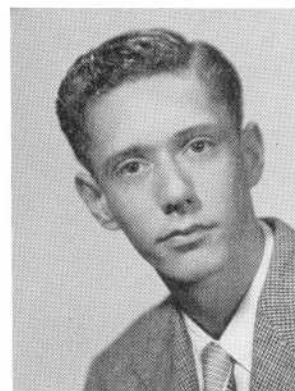


JAMES P. KENNEDY

*Pat*

THOMAS W. KENNEDY

*Knife Tom*



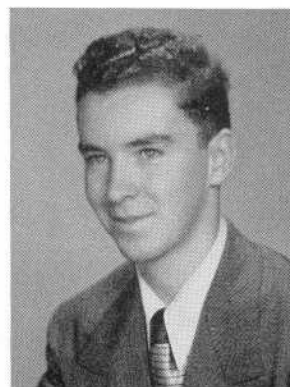
DONALD KENYON

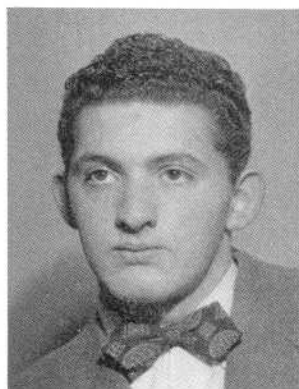
*Chips Kid Sure*

FRED T. KESSELL

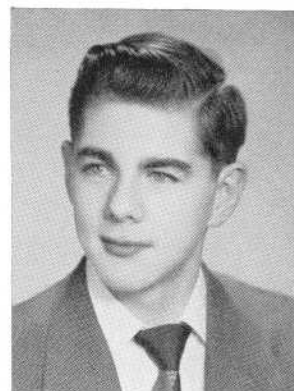
*Freddie Sharpie Irish*

Band 4  
Speakers' Bureau 4  
Boys Glee Club 2, 3  
Junior Mixed Chorus 2  
Senior Mixed Chorus 3





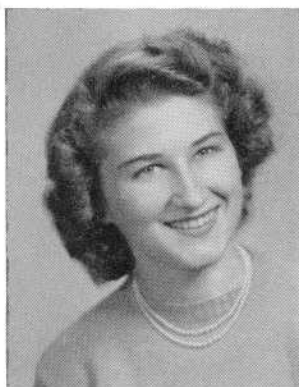
DOUGLAS JOSEPH KHOURY



ARTHUR V. KING

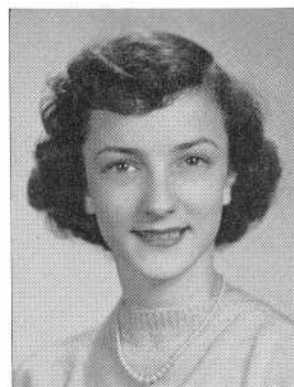
*Art*

Home Room Director 2  
Hilltop Sports Editor 4  
Record Book Sports Editor 4



NANCY E. KIRKWOOD

Health Councillor 2  
National Honor Society 3, 4  
French Club 4  
President 4  
Office Aid 3



PHYLLIS ANN KISPERT

*Kiss-Kiss*

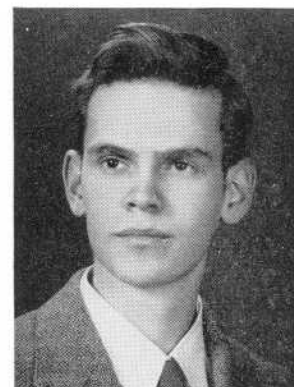
Speakers' Bureau 4  
Literary Club 4  
Senior Mixed Chorus 3, 4  
Girls' Glee Club 2, 3, 4  
Ensemble Club 4  
French Club 3  
Lead in Opera "Hansel and Gretel" 2  
Lead in Opera "Bastien and Basitienna" 3  
Lead in Opera "Mikado" 4



SARAH T. KITCHEN

*Sally*

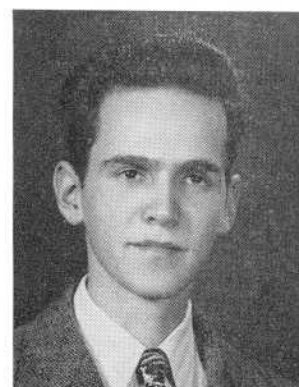
Camera Club 2  
Dramatic Club 4  
Commercial Club 4  
Office Aid 4  
Record Book Staff Typist 4



ARTHUR R. KLINE

*Art Artie*

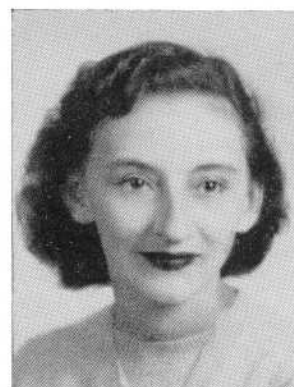
Traffic Officer 3  
Home Room Director 4



GERALD C. KLINE

*Jerry*

Speakers' Bureau 3, 4  
Traffic Officer 3



MARIE D. KNEISEL

*Brown Eyes*

Commercial Club 4  
Camera Club 4



HELEN A. KOSTA

Literary Club 4  
Records Club 4  
French Club 4



MONA LEE KOZEL

Junior Mixed Chorus 1  
Girls' Glee Club 1  
All State Orchestra 3, 4  
French Club 4  
Mathematics Club 4  
Ensemble Club 4  
Orchestra 2, 3, 4



ROSE KRECIOCH

Camera Club 4  
Girls' Glee Club 2, 3, 4  
Senior Mixed Chorus 3, 4  
Literary Club 4  
French Club 3



KATHLEEN T. KRUPA

*Kathy*

Home Room Director 2, 4  
Dramatic Club 3, 4  
Commercial Club 4



MARCIA J. KUPERSCHMID

*Marsh*

Camera Club 4  
Office Assistant 3, 4



CLAUDETTE A. LaBONTE

*Claud*

Numeral Club 3, 4  
Vice-President 4  
Treasurer 4  
Bowling 3, 4  
Softball 3, 4  
Captain 3, 4  
Field Hockey 3, 4  
Captain 4  
Varsity Basketball 4  
Advisory Committee 4  
National Honor Society 3, 4



HELENE T. LABOSSIERE

*Helen*



JOAN MARILYN LANGTON

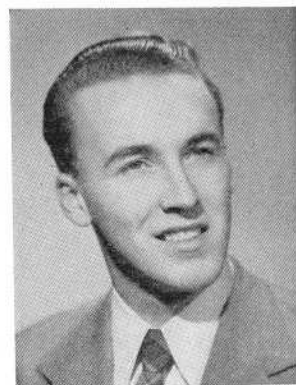




LILLIAN LANZENDORFER

*Lil*

Camera Club 4



CARL D. LaROCHE

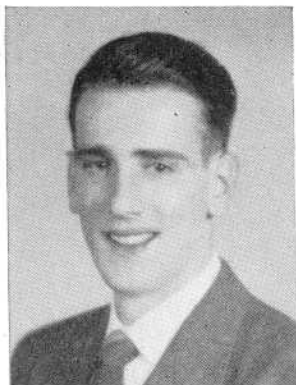
WILLIAM R. LaROCHELLE

*Bill Stretch*

Senior Mixed Chorus 3, 4  
Lead in "Bastienne and Bastienna" 3  
Senior Prom Committee 4  
Ensemble Club 3, 4 Boys' Glee Club 2, 3, 4  
Lead in "Mikado" 4 Junior Mixed Chorus 2  
Health Officer 2 All State Chorus 4  
Record Book Staff 4 Librarian 4

JANE LAROCQUE

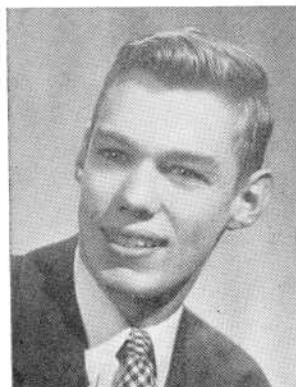
Basketball Coaching 3, 4  
Basketball Junior Varsity 2, 3  
Senior Prom Committee 4  
Junior Prom Committee 3  
Ring Committee 3 Field Hockey 2, 3, 4  
Girls' Tennis Club 4 Captain 4  
Softball 2, 3, 4 Speakers' Bureau 3, 4  
Bowling 2, 3, 4 Junior Mixed Chorus 2  
Gym Leader 4 Girls' Glee Club 2  
Basketball Varsity 4 Numeral Club 2, 3, 4  
Volleyball 2, 4 S. A. A. Councilor 3, 4



RICHARD A. LARTER

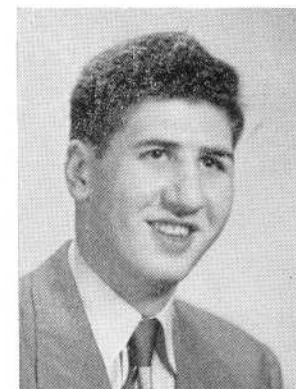
*Dick*

Junior Mixed Chorus 2  
Boys' Glee Club 2  
Dramatic Club 3, 4  
National Thespian Society 4  
Camera Club 3, 4  
President 3, 4  
Speakers' Bureau 4



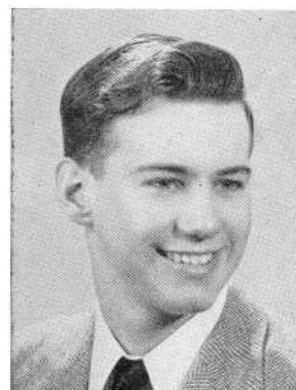
MANUEL LAUREANNO

*Moon*



PAUL E. LAVOIE

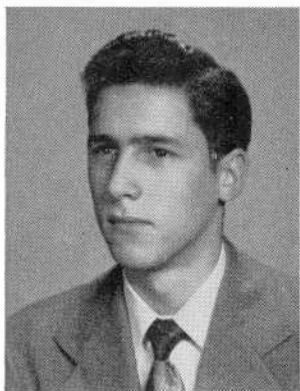
Home Room Director 1, 2  
Health Councillor 4  
Mathematics Club 4  
President 4  
Traffic Squad 3, 4



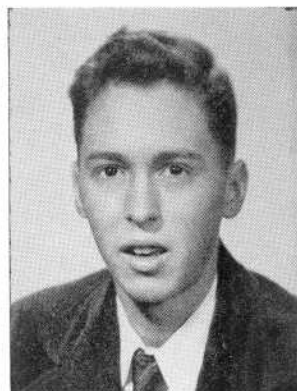
RONALD A. LAVOIE

*Ronnie*





GEORGE LEANDRO



LEO J. LEGER, JR.



EVA MARIE LEVESQUE

*Eve*

Girls' Glee Club 3, 4  
Senior Mixed Chorus 4  
French Club 4  
Ensemble Club 3

SYDELL MAE LEVIN

*Syd*

Dramatic Club 2, 3, 4  
Mathematics Club 4  
Camera Club 4  
Thespians 3, 4  
Treasurer 4  
Record Book Staff Artist 4



DONALDA LEVRAULT

*Donnie*

Orchestra 2, 3  
Records Club 4  
Camera Club 4  
Commercial Club 4  
Guidance Office 4  
Typist of Record Book 4

HARRIET LIFRAK

*Har*

National Thespian Society 3, 4	Girls' Glee Club 2
Literary Club 3, 4	Junior Mixed Chorus 2
Camera Club 3, 4	Hilltop Staff 4
Records Club 3, 4	Dramatic Club 2, 3, 4
Tennis Team 4	



ROSE LINER

Dramatic Club 2, 3  
Orchestra 2, 3, 4  
Literary Club 2, 3  
Record Club 4  
Camera Club 4

BARBARA ANN LIVESEY

*Babs Barbie Libby*

Girls' Glee Club 2  
Camera Club 2  
Speakers' Bureau 4

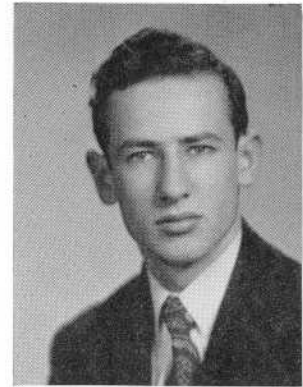




JOSEPH F. LOGOZZO

*Joe*

Basketball Freshman League All Stars



JOHN J. LOVE

*Lovey*

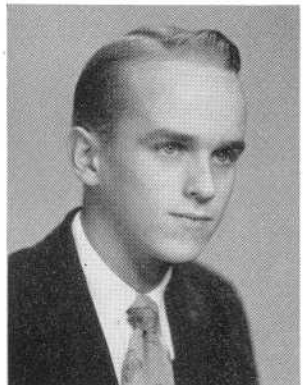
Home Room Director 3, 4



ELVEREE DEE LOWRY

*Ellie*

Commercial Club 4  
Girls' Glee Club 2  
Girls' Cafeteria 4



DAVID GEORGE LOWNEY

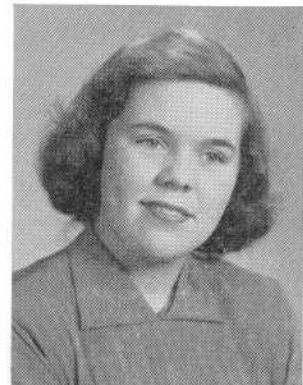
*Dave*

Mathematics Club 4  
Boys' Glee Club 2, 3  
Junior Mixed Chorus 2  
Senior Mixed Chorus 3



ROCHELLE H. LUBINSKY

National Honor Society 3, 4  
Record Book Assistant Editor 4  
Girls' Glee Club Accompanist 2  
Junior Mixed Chorus Accompanist 2  
National Thespians 3, 4  
Camera Club 2, 3  
Library Aids 4  
Record Club 3, 4  
President 4  
Speakers Bureau 4  
Dramatic Club 2, 3, 4  
Treasurer 3  
Literary Club 2



ELEANOR M. LYNCH

*El Lynchie*

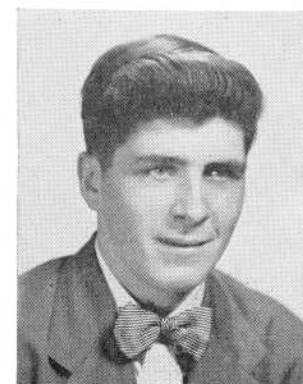
Camera Club 2  
Junior Girls' Glee Club 2  
Senior Girls' Glee Club 3, 4  
Senior Mixed Chorus 3, 4  
Junior Mixed Chorus 2



JOAN FRANCES MacDONALD

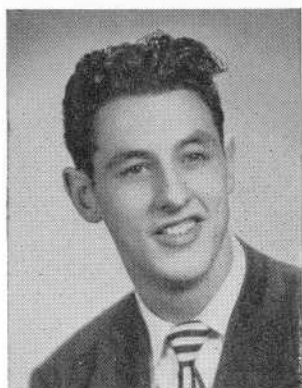
*Mac Irish Jo*

Home Room Director 3, 4  
Commercial Club 4  
Junior Girls' Glee Club 2  
Junior Mixed Chorus 2  
Senior Mixed Chorus 3  
Senior Girls' Glee Club 3



ANDREW F. MACHADO

*Andy*



JAMES M. MACHADO

*Jimmy Jim*

Health Councillor 2

HILDA S. MADEIROS

Camera Club 2, 3, 4  
Record Club 4  
National Honor Society 3, 4  
Commercial Club 4  
Vice-President 4  
Portuguese Club 3, 4  
Committee 3, 4  
Guidance Office 4  
Health Councillor 4



JOAN P. MAHER

*Ma*

Girls' Glee Club 2

GEORGE C. MAIATO



CONSTANCE MARCHAND

*Connie*

Girls' Glee Club 2, 3, 4  
Junior Mixed Chorus 2  
Senior Mixed Chorus 3, 4

JOAN FRANCES MARSHALL

*Franny*



DOLORES MARTIN

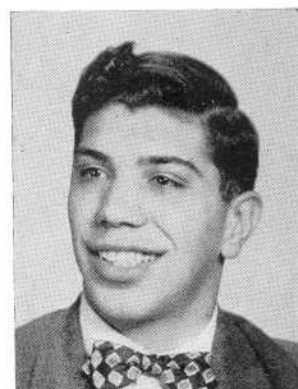
*Del*

Portuguese Club 3, 4  
Secretary 3, 4  
Commercial Club 4  
President 4  
Record Club 4  
Camera Club 3, 4  
National Honor Society 3, 4  
Girls' Glee Club 2  
Junior Mixed Chorus 2  
Office Aid 4

JESSE R. MARTIN

*Jess*

Junior Prom Committee 3  
Traffic Squad 3





LOUIS BRANCO MARTINS

*Louie*

Home Room Director 1, 2



FRANCIS B. McANDREW

*Mac*



NANCY J. McDONALD

*Mac*

President Junior Red Cross Council 4  
Record Book Staff  
Cheerleader 3, 4      German Club 3, 4  
Head Cheerleader 4      Field Hockey 2  
Record Club 4      Volleyball 2

NANCY R. McGEE

*McGee Squittles*

Office Aid 4      German Club 2, 3, 4  
Mathematics Club 4      Home Room Director 1, 2  
Ensemble Group 3      Health Councillor 4  
Volleyball 2      Speakers' Bureau 4

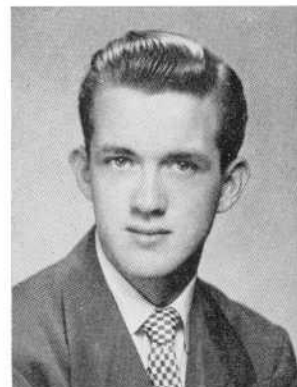


FRANCIS J. McGRATH, JR.

*Hook Franny*

FRANCIS W. McGUIRE

*Mickey Minty*



JOHN FRANCIS McMAHON, JR.

*Mac Franny Irish*

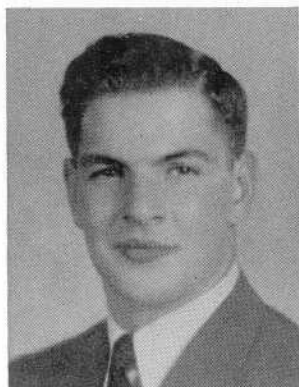
Students Activities Association 2, 3, 4  
Boy Councillor 2  
Vice-President 3  
President 4  
Speakers' Bureau 3, 4  
Sanitation Commission 3, 4  
Junior Prom Committee 3  
Class Ring Committee 3  
Home Room Director 2, 3  
National Honor Society 3, 4

GEORGE McNAUGHTON

*Mac*







GILBERT MEDEIROS

*Gil*

Varsity Club 2, 3, 4  
 German Club 2, 3  
 Baseball 2, 3, 4  
 Football 2  
 Mixed Choir 2  
 Boys' Choir 2  
 Alumni Field Aid 2, 3, 4



IDA MEDEIROS

Health Councillor 2  
 Portuguese Club 3, 4  
 Commercial Club 4



JUDITH C. MEDEIROS

*Judy*

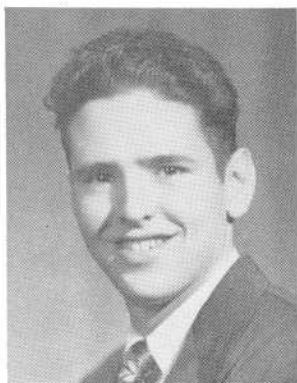
Camera Club 2  
 Portuguese Club 3, 4  
 National Honor Society 3  
 Speakers' Bureau 4  
 Commercial Club 4  
 Office Aid 4  
 Home Room Director 4



JULIETTE C. MEDEIROS

*Julie*

Camera Club 2  
 Portuguese Club 3, 4  
 Commercial Club 4



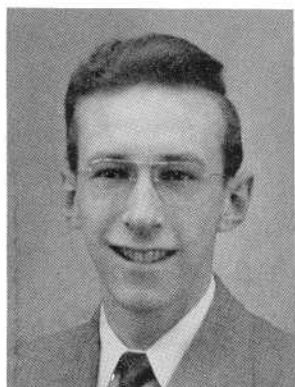
LOUIS MEDEIROS

*Louie*



PAULINE MEDEIROS

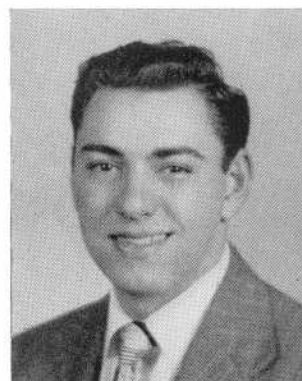
Camera Club 3, 4  
 Secretary 4  
 Portuguese Club 3, 4  
 Commercial Club 4  
 National Honor Society 3, 4



FRANK P. MELLO

*Frankie*

Band 2, 3, 4



GIL S. MELLO

Home Room Director 4  
 Commercial Club 4  
 Portuguese Club 3, 4



ROSE F. MELLO  
*Shorty 4' 11"*



LEOLA M. MELLOR  
*Lee*  
Home Room Director 4



BARBARA L. MERRILL  
*Babs*

Girls' Glee Club 2, 3, 4  
Junior Mixed Chorus 2  
Senior Mixed Chorus 3, 4  
German Club 3, 4  
Camera Club 2



ROSE D. MEYERS



ROBERT D. MICHAUD  
*Bob Mich*

German Club 3, 4  
Health Councillor 3, 4  
Traffic Squad 2  
Freshman Baseball 1  
Freshman Basketball 1

*Edward C. Michno*

EDWARD C. MICHNO  
*Ed*



HELEN L. MITCHELL  
*Mitch*



HILDA D. MONIZ  
Camera Club 2  
Portuguese Club 3, 4  
Commercial Club 4  
Office Aid 4



JAMES R. MONIZ

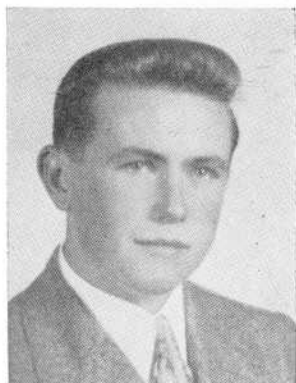
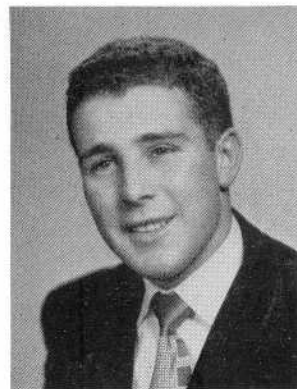
*Jim*

Health Councillor 1  
Boys' Glee Club 1  
Junior Mixed Chorus 2  
Senior Mixed Chorus 2  
Basketball Student Manager 2, 3, 4  
Football Student Manager 4  
Varsity Club 2, 3, 4  
Vice-President 4  
Alumni Field Aid 2, 3, 4  
Cafeteria 2, 3, 4

DONALD MONTLE

*Ducky*

Football 2, 3, 4  
Baseball 3, 4  
Varsity Club 4

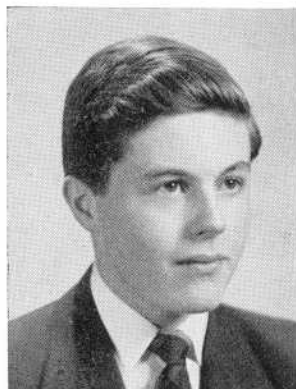


OWEN P. MOONEY

*Moon*

Home Room Director 3  
Basketball 2, 3, 4  
Varsity Club 4

MARY E. MOORE



CHARLES M. MORAN, JR.

*Mo Chuck*

National Honor Society 3, 4  
Junior Prom Committee 3  
Student Council 3, 4 Speakers' Bureau 3, 4  
Sanitation Commission 4 Library Aids 2, 3, 4  
Freshman Baseball 1 Ring Committee 3

MARILYN T. MORAN

*Mal*

Home Room Director 2, 3  
Girls' Numeral Club 3, 4  
Basketball 3  
Field Hockey 4  
Gym Leader 4  
Cheerleader 3, 4  
Office Aid 3  
Advisory Committee 4



JAMES M. MOREY

*Jim*

JOAN C. MORTON

*Joannie Mort*

Junior Mixed Chorus 2  
Senior Mixed Chorus 3  
Girls' Glee Club 2, 3  
Office Aid 4





CONSTANCE M. MOSLEY

*Connie*

Health Councillor 3  
Hilltop Staff 4  
Commercial Club 4  
Cap and Gown Committee 4



RUTH MOSS

Orchestra 2  
Band 2, 3, 4  
Dramatic Club 2, 3, 4  
Thespians 3, 4  
Health Councillor 2



EVERETT MOURA



DONALD F. MUNRO

*Don*

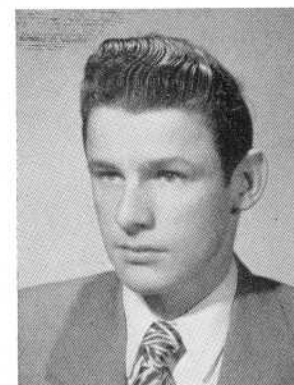
Traffic Officer 4



DOLORES L. MURPHY

*Del*

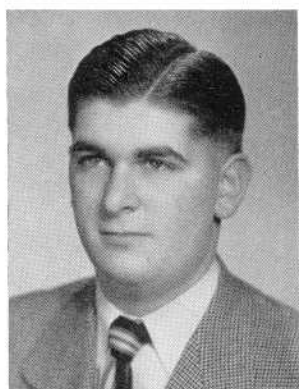
Commercial Club 4



JOSEPH P. MURPHY

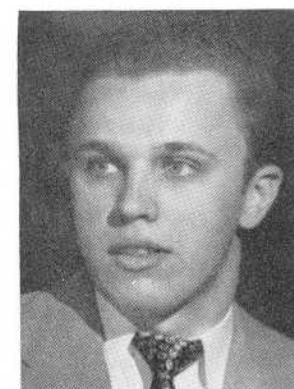
*Murph*

Traffic Squad 2



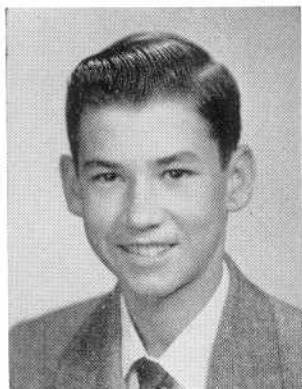
LEW NADIEN

Orchestra 2, 3, 4  
Band 2, 3, 4  
Ensemble Club 3, 4  
Chorus 2



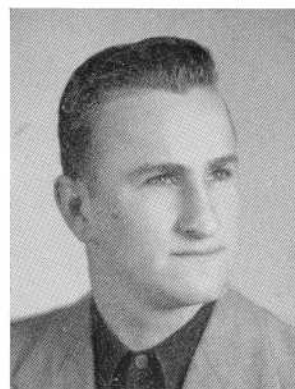
NORMAN NICHIPOR

*Nick*



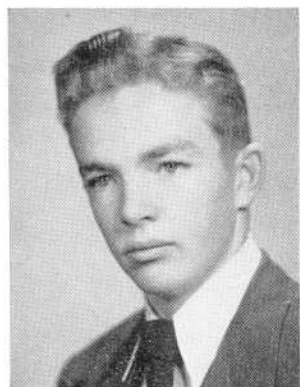
FRED M. NIEMCZYK

*Ruby*



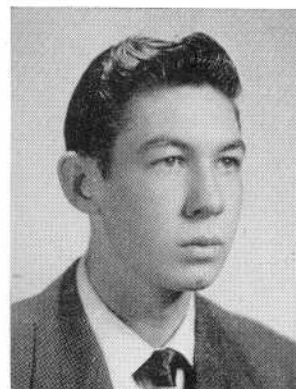
EDWARD P. NIEWOLA

*Eddie Ed*



JEFFREY O'BRIEN

*O Bie*



TIMOTHY F. O'CONNELL

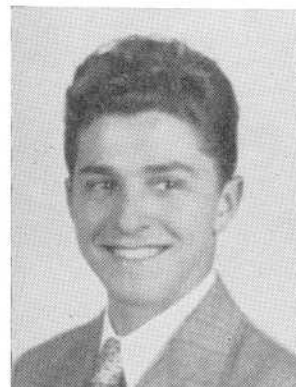
*Tim*



DELORES M. OLIVEIRA

*Del*

Girls' Glee Club 3  
Junior Mixed Chorus 3



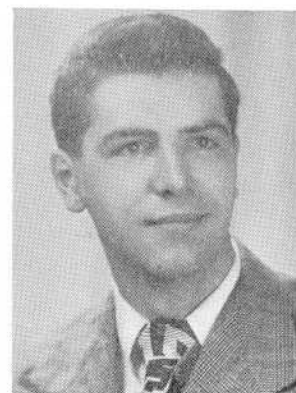
MANUEL OLIVEIRA

*Happy*



MARY THERESA OLIVEIRA

French Club 4  
Health Councillor 1, 3  
Home Room Director 2  
Mathematics Club 4  
National Honor Society 3, 4



NORMAN A. OLIVEIRA

*Norm Ollie*

Health Councillor 2  
Traffic Squad 4

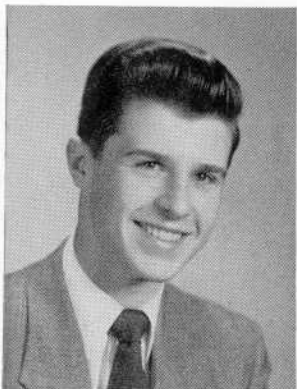




CONSTANCE OLIVER  
*Connie*



JOAN A. OLSSON



GEORGE OSTROW  
Band 2, 3, 4  
Assistant Business Manager 4  
Home Room Director 4



IRENE L. OUELLETTE  
*Queenie*  
French Club 4  
Senior Mixed Chorus 3, 4  
Girls' Glee Club 2, 3, 4



JEAN M. OUELLETTE  
Office Aid 4



DORIS PAIVA  
*Dot Dottie*  
Girls' Glee Club 2, 3, 4  
Dramatic Club 3  
Commercial Club 4



PAUL J. PARENTE  
Band 1, 2, 3, 4  
Assistant Librarian 2, 3  
Business Manager 4  
Orchestra 1, 2, 3, 4  
Ensemble Club 3, 4  
Speakers' Bureau 4



BERTRAND A. PATENAUDE  
*Bert*  
Home Room Director 2, 3



RITA A. PATENAUDE

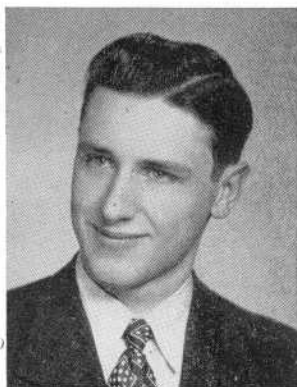
*Ritz*

Home Room Director 1, 3  
French Club 4



ALICE ANN PEIXINHO

*Shorty*



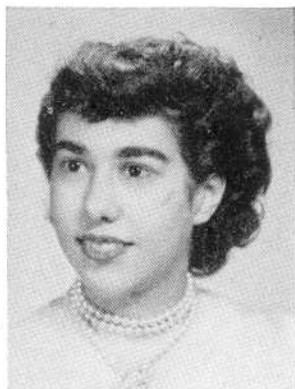
WILLIAM A. PELLETIER

*Bill Pellets*



BETTY PEREIRA

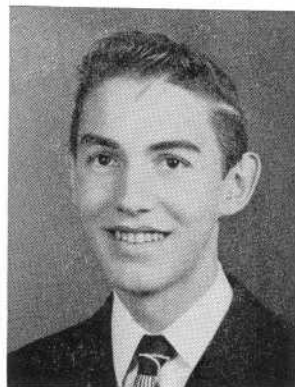
National Honor Society 3, 4



HAZEL E. PEREIRA

*Flash*

German Club 3, 4  
Portuguese Club 3, 4  
Records Club 4  
Business Manager of Hilltop 4



LOUIS PEREIRA

Band 1, 2, 3  
Orchestra 3  
Portuguese Club 3, 4



DONALD H. PETERSON

*Pete*



JOYCE A. PHELAN

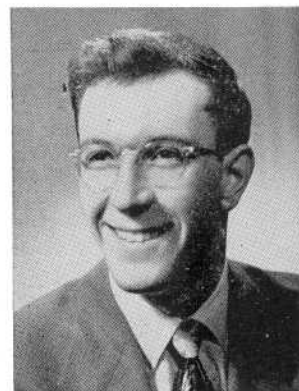
*Joy*

Dramatic Club 2  
Band 3, 4  
Commercial Club 4  
Record Club 4



CLAUDETTE L. PIGEON

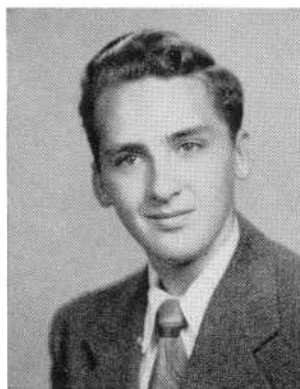
French Club 3, 4  
President 3, 4



JAMES H. PIMENTAL

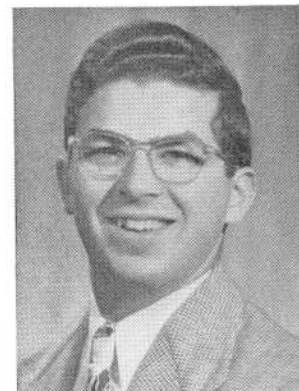
*Pep*

Baseball 2, 3, 4  
Varsity Club 3, 4



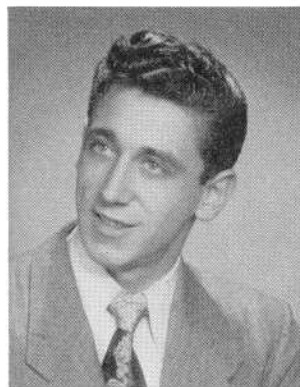
DANIEL R. PLOUFFE

*Dan*



SAMUEL J. POLLOCK

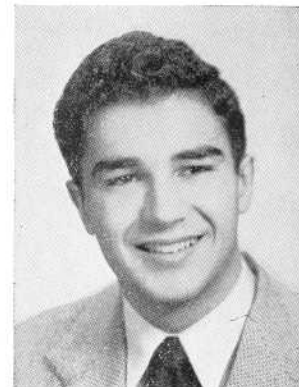
Camera Club 4  
Mathematics Club 4  
Junior Mixed Chorus 2  
Boys' Glee Club 2



GAETANO M. POLSELLI

*Gae*

Traffic Squad 1, 2, 3  
Cafeteria 4



ROBERT M. PONTE

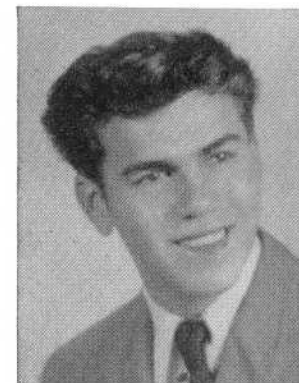
*Bob Bobby*

Assistant Sports Editor of Hilltop 4  
Boys' Glee Club 1, 2, 3  
Junior Mixed Chorus 1  
Senior Mixed Chorus 2, 3  
Football Team 2, 3  
Manager 4  
Varsity Club 4  
Student Council 4  
Speakers' Bureau 4  
Home Room Director 4  
President 4  
Camera Club 3  
Sanitation Commission 4



MARY M. POWERS

Home Room Director 2, 4  
Girl Councillor of Health Club 2  
Sanitation Commission 2



EDMOND M. QUINTAL

*Eddy*



GLORIA T. RAMOS

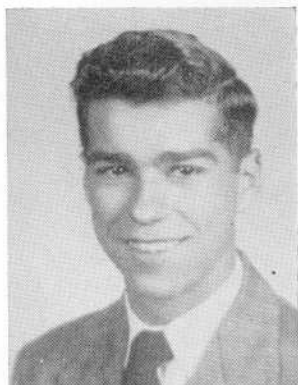
*Dimples*

Girls' Glee Club 3, 4  
Senior Mixed Chorus 4

LAURA B. RAMOS

*Pres*

Dramatic Club 3, 4  
President 4  
Thespians 3, 4  
Senior Mixed Chorus 3, 4  
Girls' Glee Club 2, 3, 4  
Speakers' Bureau 4  
Ensemble Club 4  
All State Chorus 4  
Lead in "Mikado" 4  
Lead in "Hansel and Gretel" 2

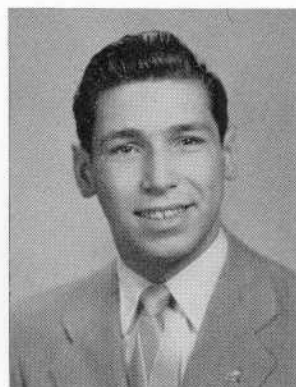


EDMUND RAPOSA

*Monty*

JOHN J. RAPOSA

*Rapp*



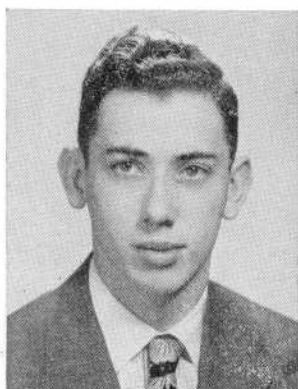
SHIRLEY C. RATTE

*Shirl*

French Club 4  
Records Club 4

LESTER RAYMOND

*Ray*

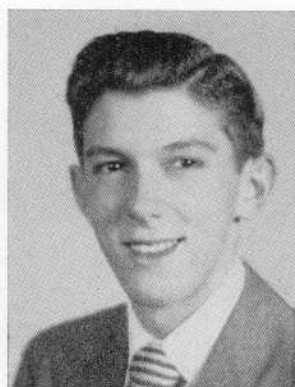


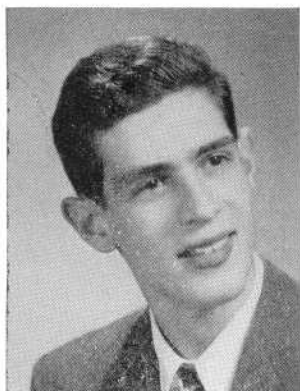
ROBERT P. REAGAN

*Bob*

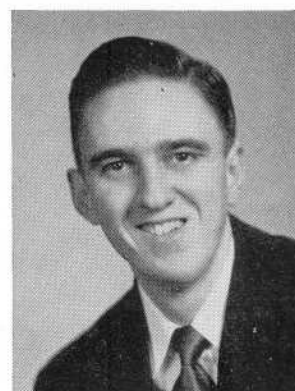
STEPHEN REBELLO

*Steve Rebel*

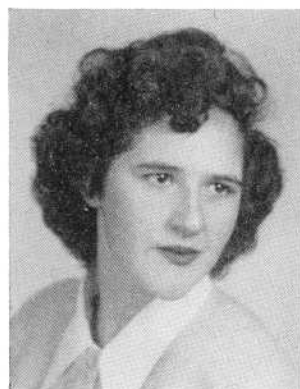




THOMAS REITANO  
*Tommy*

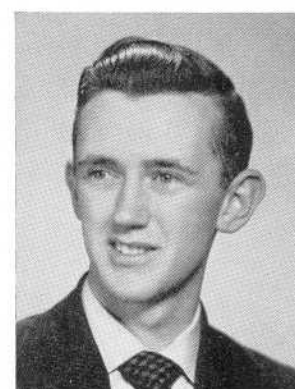


NICHOLAS R. RENZULLI  
*Nick*



DORIS D. RIENDEAU  
*Dot*

Speakers' Bureau 4  
Commercial Club 4  
Camera Club 4  
Junior Mixed Chorus 2  
Girls' Glee Club 1, 2



GEORGE F. RILEY  
*Hughie*

Band 2, 3  
Orchestra 1, 2, 3



DORIS RIOUX  
*Dot*

Majorette 2  
Health Councillor 2  
Camera Club 2  
Office Aid 4  
Girls' Glee Club 2



CAROLYN J. ROBINSON  
*Carol*

Girls' Glee Club 2



EDITH L. ROCHA  
*Bootsie*



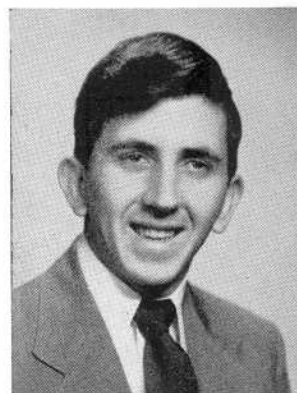
AURELIO RODRIQUES  
*Curly*

Lead in "Bastien and Bastienna"	
Record Club 3	
Vice-President 3	Senior Mixed Chorus 4
Dramatic Club 2	Junior Mixed Chorus 3
Home Room Director 2	Barbershop Quartet 2
Boys' Glee Club 3	Lead in "Mikado"
Ensemble Club 4	Portuguese Club 4





WALTER J. RONCKA



FRANCIS V. ROSARIO

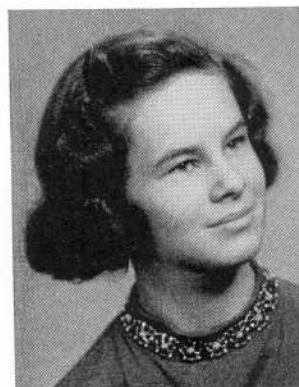
*Frankie*

Portuguese Club 3, 4  
Camera Club 2, 3



ANN B. ROSE

Vice-President Freshman Class 1  
Sanitation Commission 1  
Home Room Director 3  
Health Councillor 3  
Hilltop Staff 4



LORELEI RUBIN

*Lolly*

German Club 3, 4



BERNARD PAUL RYAN

*Peper Bunny*



CATHERINE JOAN RYDZ

*Cathy*



JEANNETTE M. SAHADY

*Janet*

Home Room Director 1, 2  
Office Aid 4



ALICE P. ST. AMOUR

*Al St Say No More*

Dramatic Club 2  
Field Hockey 2  
Softball 2



THERESA M. ST. ROCK

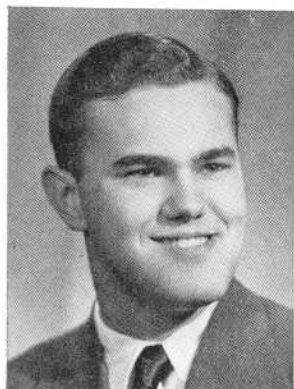
*Terry Tess*

Home Room Director 3



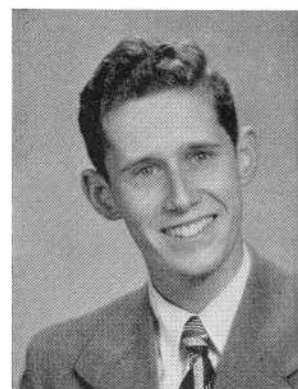
FLORINDA SANTOS

*Flo*



ROGER A. SAVOIE

*Rog*



HAROLD SCHOFIELD, JR.

*Scho*

National Honor Society 3, 4



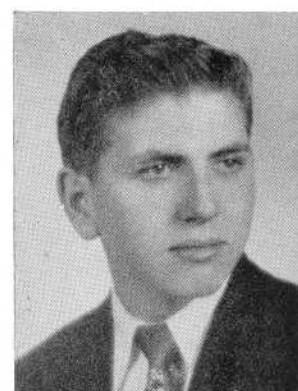
CARL I. SCHWEBER

*Don Carlos*

Dramatic Club 2, 3, 4

Thespians 3, 4

Co-Master of Ceremonies 4

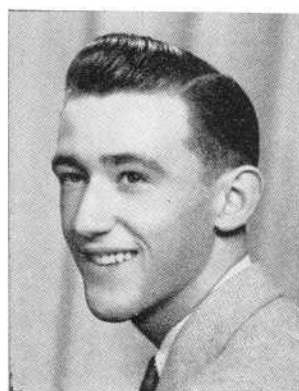


SAUL J. SCHWEBER

*Schweb*

Dramatic Club 2, 3, 4

National Thespian Society 3, 4



JOHN THOMAS SEAMAN

*Tommy*

Home Room Director 1



FLORENCE R. SERAFIN

*Flo*

National Honor Society 3, 4

Secretary 4

Health Councillor 2, 4

Girls' Glee Club 1, 2

Senior Mixed Chorus 3

Staff Typist of Record Book 4

Junior Mixed Chorus 1, 2



DONALD P. SETTERS

*Red*

German Club 2, 3  
Band 2, 3

MARIANNE B. SHAPIRO

*Kitty*

Literary Club 2, 3, 4  
Record Club 3, 4  
Camera Club 3, 4  
Membership Chairman 4  
Dramatic Club 4  
Costume Mistress 4  
Field Hockey 2, 3  
Softball 2



CHARLES G. SHEDIACK

Home Room Director 1  
American History Award 3

RAYMOND SHELMEERDINE

*Bud Shelly*

Senior Mixed Chorus 2, 4  
Boys' Glee Club 2, 4  
Junior Mixed Chorus 2  
Traffic Squad 3, 4



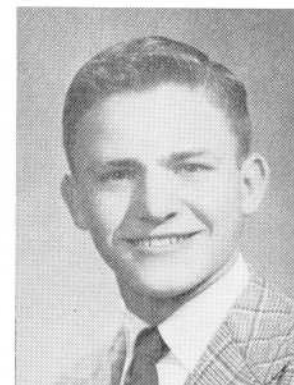
BETTY SHOGEI

Dramatic Club 3, 4  
National Thespians 3, 4

STANLEY J. SIECHKOWSKI, JR.

*Stan Spike Sis*

Home Room Director 2  
Baseball Team 2, 3, 4  
Basketball Team 3  
Varsity Club 3, 4  
Alumni Field Aid 2, 3, 4



PAULINE SILVA

*Pee Wee*

Dramatic Club 2, 3, 4  
Thespians 4  
Camera Club 3, 4  
Literary Club 3, 4  
Hilltop Staff 4

THERESA M. SILVA

*Terry*

Home Room Director 2  
Hilltop Staff 4  
Commercial Club 4  
Advisory Committee 4  
Office Aid 4

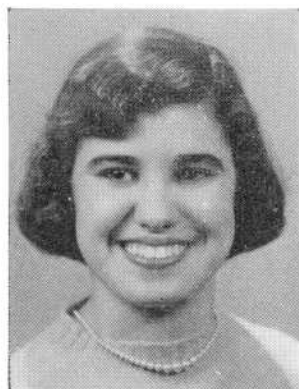




ELSIE JOAN SILVIA  
*Joan*



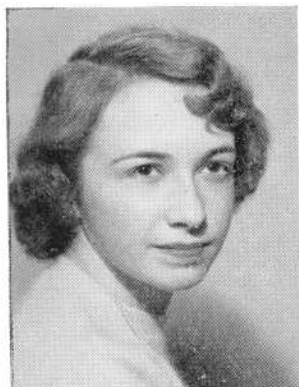
MARY C. SILVIA  
Girls' Glee Club 1, 2  
Junior Mixed Chorus 1  
Senior Mixed Chorus 2  
Office Aid 4  
Commercial Club 4  
Secretary 4  
Hilltop Staff 4



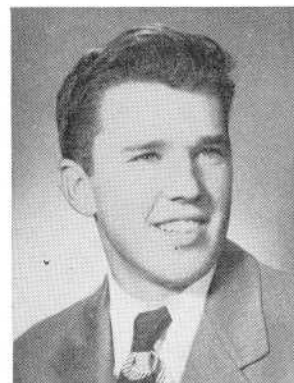
NATALIE SILVIA  
*Nat*  
Camera Club 2, 3  
Chairman of Social Committee 4  
Library Aids 2, 3, 4  
Health Councillor 4  
French Club 3, 4  
Debating Tournament 4



SARAH SILVIA  
Senior Mixed Chorus 3  
Junior Girls' Glee Club 2  
Senior Girls' Glee Club 3  
Commercial Club 4  
Treasurer 4  
Camera Club 4  
Portuguese Club 4  
Home Room Director 4



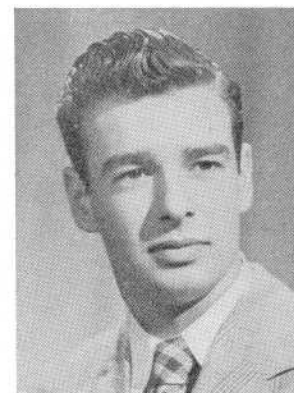
NORMA J. SIMMONS  
*Swim Norn*  
Home Room Director 3  
Camera Club 2, 3  
Records Club 4  
Mathematics Club 4



WILLIAM A. SIMMONS  
*Simmie*  
Health Councillor 3



JOANNE SIMONETTI  
*Spaghetti*  
Advisory Committee 4

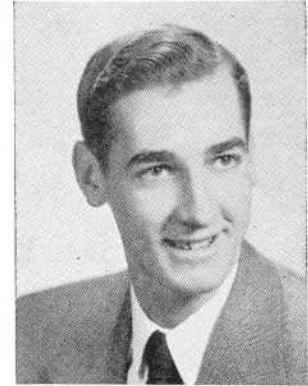


THOMAS SINGLETON  
*Tom*



CAROL W. SLATER

Girls' Numeral Club 2, 3, 4  
Bowling 2, 3, 4  
Volleyball 2  
Field Hockey 2, 3  
Softball 2, 3  
Coaching 3  
Gym Leader 3



THOMAS W. SMIALEK

*Smoke*



EARL J. SOARES

*Duke*

Portuguese Club 3



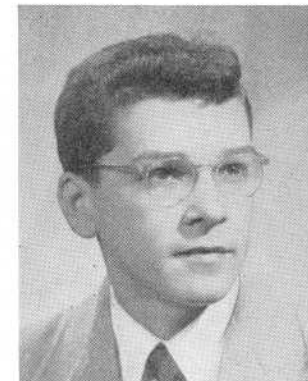
RUTH SHIRLEY SOUTHWORTH

*Shirl*



DONALD J. SOUZA

*Mickey*



FRANCIS J. SOUZA



HENRY SOUZA

Football Team 2  
Portuguese Club 3, 4



BARBARA C. SPOONER

*Catty*

Gift Committee 4





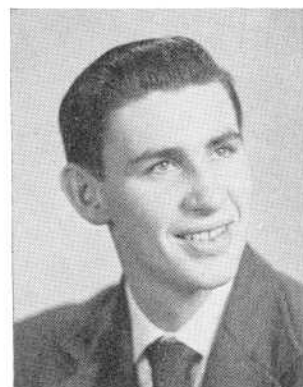
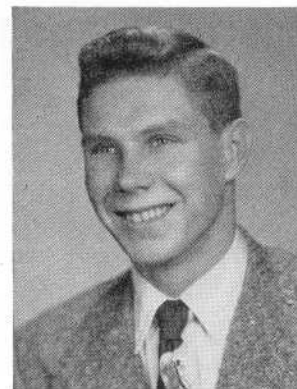
# RUTH M. STUKUS

Band 2, 3, 4  
Junior Mixed Chorus 2  
Girls' Glee Club 2

# WALTER F. STUKUS

*Walt*

Varsity Club 3, 4  
Baseball 2, 3, 4  
Football 3, 4  
Home Room Director 2, 3



# JEFFREY E. SULLIVAN

*Jeff Sull Sully*

Football Team 1, 2, 3, 4  
Basketball Manager 3, 4  
Varsity Club 3, 4  
Track Team 3

# LOUISE M. SULLIVAN

*Sully*

Junior Prom Committee 3  
Senior Prom Committee 4  
Girls' Numeral Club 2, 3, 4  
Basketball Coach 3  
Bowling 2, 3  
Hockey 1, 2, 3  
Volleyball 2, 3  
Softball 1, 2  
Gym Leader 3, 4  
Tennis 4



# M. KATHLEEN SUMNER

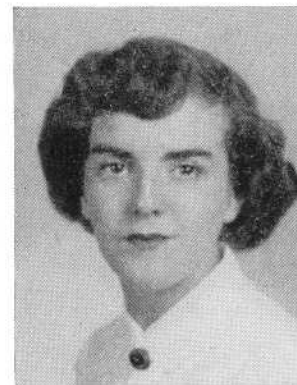
*Kathy*

Senior Girls' Glee Club 3, 4  
Senior Mixed Chorus 3, 4

# LILLIAN SUNTER

*Lil*

Dramatic Club 2  
Volleyball 2  
Field Hockey 2, 3  
Badminton 2  
Softball 2, 3  
Basketball 2



# ALICE A. SUPRENANT

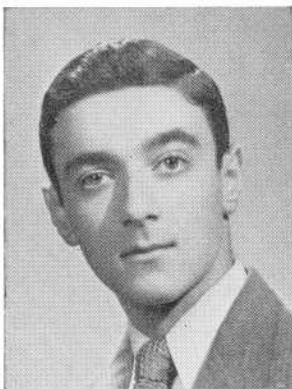
*Supey*

Girls' Numeral Club 2, 3, 4  
Field Hockey 2, 3, 4  
Gym Leader 4  
Badminton 2, 3, 4  
Volleyball 2, 3, 4  
Captain 4  
Softball 2, 3, 4  
Varsity Manager 4  
Bowling 2, 4  
Basketball Official 3, 4  
Jayvee Basketball 3

# LARRY P. SZCZESNY

*Pete Sneezy*

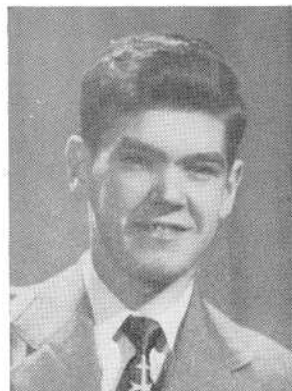




BERNARD A. G. TARADASH

*Bernie Teka Jasper*

Tennis Team 3, 4  
 Captain 4  
 Varsity Club 3, 4  
 Mathematics Club 4  
 Dramatic Club 3



DONALD F. TAYLOR

Home Room Director 3, 4



LORRAINE M. TAYLOR

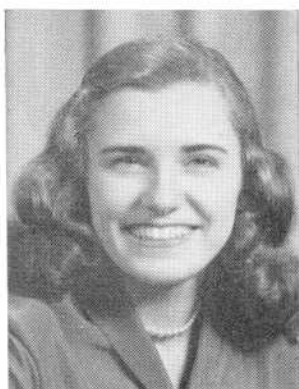
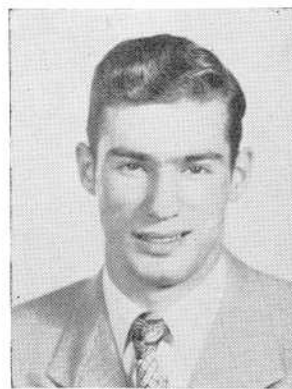
*Lorrie*

Girls' Glee Club 2, 3, 4  
 Junior Mixed Chorus 2  
 Home Room Director 2  
 Speakers' Bureau 4  
 Senior Mixed Chorus 3, 4

ALBERT B. TEIXEIRA

*Tex*

Portuguese Club 3, 4  
 President 3, 4  
 Speakers' Bureau 4



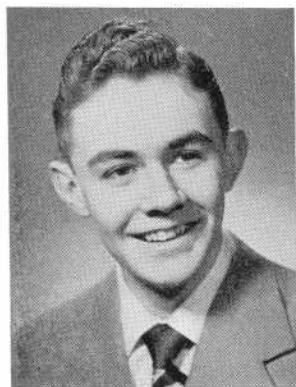
DOLORES M. TEIXEIRA

*Del*

Class Secretary 1, 2  
 Girls' Glee Club 2  
 Junior Mixed Chorus 1  
 Senior Mixed Chorus 3  
 Commercial Club 4  
 Office Aid 4

ROSALIE L. THIBAUT

*Bobbie*

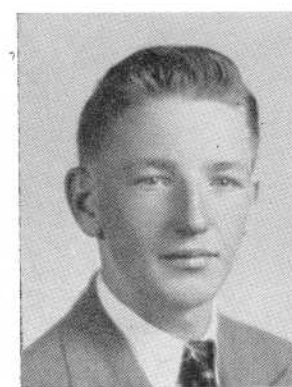


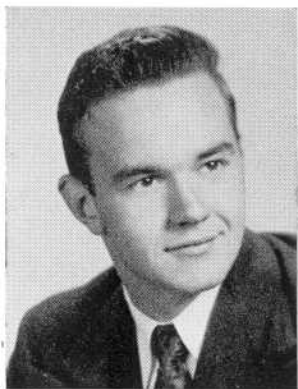
ARTHUR J. THIBODEAU

*Arch*

JOHN THOMPSON

*Jack*





ROBERT E. THOMPSON

*Bob Tom Thumper*

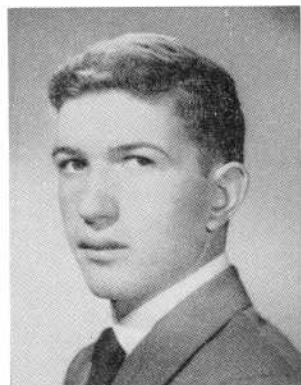
Track Team 2



DOROTHEA S. TICOZIN

*Dinny*

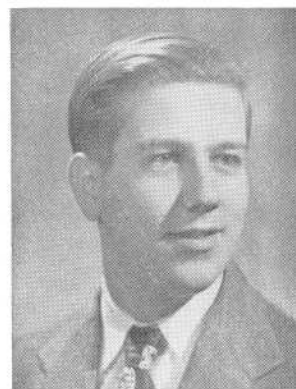
German Club 3, 4  
Camera Club 4



RICHARD R. TORCHIA

*Dick*

Basketball 2, 3, 4  
Football 2, 3, 4  
Track 3, 4  
Varsity Club 3, 4  
President 4  
Home Room Director 2



JOHN R. TORRES

*Johnny*



LYDIA C. TORRES

*Lyd Lee*

Portuguese Club 3, 4  
Camera Club 3, 4  
Home Room Director 3



RALPH A. TORRES

*Specs*



VELMA L. TRAVERS

*Vel*

Girls' Numeral Club 2, 3, 4  
Secretary of Health Club 2  
Sanitation Commission 2  
Home Room Director 3  
Senior Prom Committee 4  
Secretary of Class 4  
Field Hockey 2, 3, 4  
Bowling 3, 4  
Softball 2, 3  
Basketball 2, 3, 4  
Varsity Basketball 4



NORMA M. TRIPP

*Norm Trippie*

Girls' Glee Club



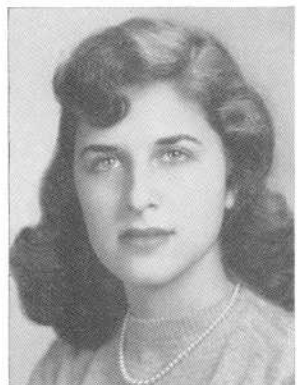
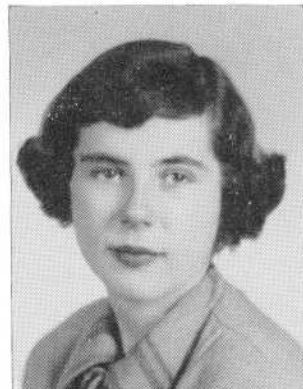
CHRISTINE P. TURNER

*Chris Chrisie*

JOAN M. TURNER

*Mac*

Girls' Numeral Club 3, 4  
Office Aid 3, 4  
Hilltop Staff 4  
Health Councillor 2, 3  
Volleyball 3, 4  
Softball 3  
Hockey 4  
Bowling 3  
Badminton 2, 4



JUDITH L. UDOVIN

*Judy*

Senior Mixed Chorus 2  
Dramatic Club 2, 3, 4  
Girls' Glee Club 1, 2  
Camera Club 4

LAURA F. VASCONCELLOS

Dramatic Club 2  
Girls' Glee Club 2  
Camera Club 3  
Office Aid 3

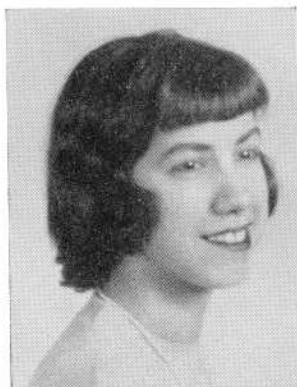


IRENE M. VICTORINE

*Vic Stan*

National Honor Society 3, 4  
Editor of Record Book 4  
Hilltop Staff 4  
Library Aid 4  
Health Councillor 4

MARY C. VINCENT



MARY VIOLET

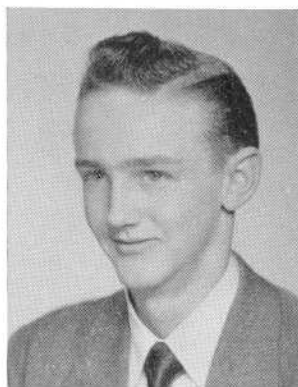
French Club 4  
Literary Club 4

MARY LOUISE WALKDEN

*Mary Lou Lou*

Girls' Numeral Club 2, 3, 4  
President 4  
Field Hockey Captain 2, 3, 4  
Home Room Director 2, 4  
Senior Prom Committee 4  
Basketball 2, 3, 4  
Junior Varsity 2, 3  
Varsity Basketball 4  
Bowling 2, 3, 4  
Basketball Coaching 3  
Gym Leader 3

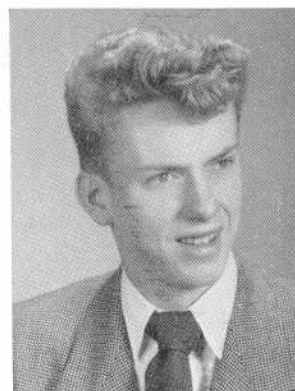




WILLIAM E. WALMSLEY

*Billy*

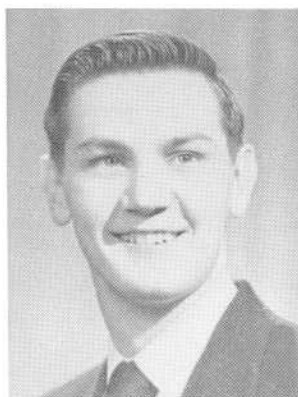
Senior Mixed Chorus 2  
Boys' Glee Club 3



RAYMOND J. WALSH

*Ray*

Basketball 3, 4  
Varsity Club 4



ALBERT W. WATTS

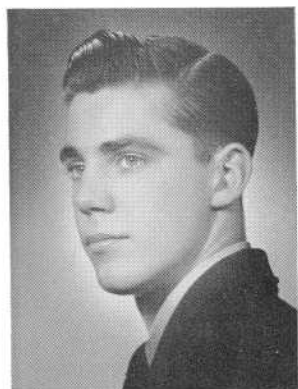
*Al Wattsie*

Home Room Director 1  
Dramatic Club 3  
French Club 3, 4  
Records Club 4  
Literary Club 3, 4



BETTY LOU M. WELLS

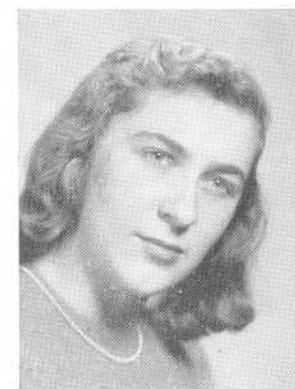
*Lou Betts*



ALVAN P. WHITE

*Al Whitey*

Home Room Director 2, 3



ELIZABETH A. WIDNER

*Betty*

Home Room Director 2



DONALD F. WILBUR



KENNETH WILEY

*Ken*





VIRGINIA L. WILEY

*Ginny*

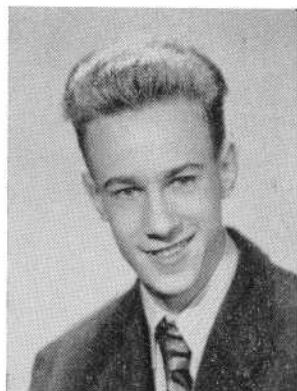
Home Room Director 3  
Speakers' Bureau 4  
Commercial Club 4  
Office Aid 4



ALFRED G. WONG

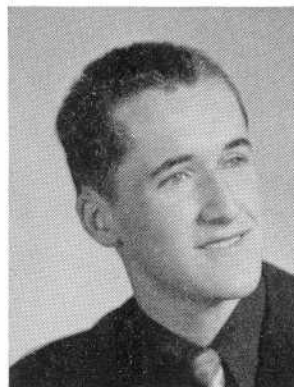
*Al Ally*

Health Councillor 2  
Library Aid 4  
Home Room Director 3, 4  
National Honor Society 3, 4  
Vice-President 4  
Assistant Editor of Record Book 4



BRUCE WOOD

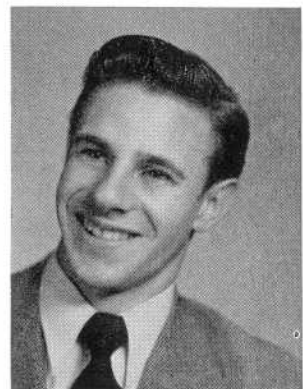
*Samson*



JAMES WOOD

*Woody*

Varsity Club 4  
Football 4  
Traffic 3  
Sanitation Commission 3



MALCOLM D. WOODWARD

*Woody*



LESTER C. WRIGHT

Band 2, 3, 4



ELEANOR E. WYSE

*Ellie*

Literary Club 2, 3, 4  
Secretary 4  
Records Club 3, 4  
National Honor Society 3, 4  
Dramatic Club 2, 3, 4  
National Thespian Society 3, 4  
Home Room Director 3  
Debating Tournament Winner 4



DOROTHY A. YATES

*Bert Al*



EDMUND J. ZUMDA

*Ed*

Band 2, 3, 4  
Orchestra 3, 4



SHIRLEY M. ZOKIE

*Shirl*

Speakers' Bureau 4  
Commercial Club 4

ARTHUR A. CHABOT

RALPH E. CHEATHAM

GIL M. DIAS

JOHN DOUGLAS DOLAN

THOMAS DORSEY

RAYMOND FRANK

JOHN R. LOPES, JR.

FRANK J. MARCHESI

LEO A. MCGINNIS

BRENDON D. McNALLY

RAYMOND M. MELLO

JOHN D. RAPOZA

EDWARD SULLIVAN

JOAN SYLVESTRI

GILBERT F. VASCONCELLOS

WILLIAM A. WALSH

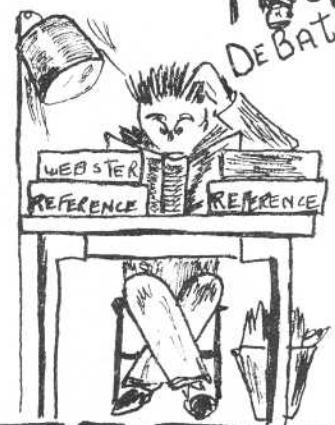
JACOB J. WEISBERG

# Who's Who...

NANCY MacDONALD	<i>Most Popular</i>	JOHN McMAHON
JOAN HAGUE	<i>Best Looking</i>	ROBERT PONTE
DOROTHY DEAN	<i>Most Dignified</i>	RICHARD DEANER
JANET ALLEN	<i>Most Athletic</i>	RICHARD TORCHIA
JO-ANN FOSS	<i>Class Wit</i>	JAMES DEAN
LILLIAN DIAS	<i>Most Interesting</i>	ROBERT HIGGINS
LYDIA TORRES	<i>Best Dancer</i>	RONALD FERNANDEZ
EUNICE EVANS	<i>Best Speaker</i>	STEPHEN GOLDBERG
BETTY ANN COHEN	<i>Best All-'round Student</i>	CHARLES ISHERWOOD
BARBARA COHEN	<i>Most Brilliant</i>	CHARLES ISHERWOOD



SARA



ACTIVITIES

W. LAROCHELLE '50



## S. A. A.

As usual, the Student Council opened the assembly program of the year with the annual football rally in September. Then followed the Clubs Assembly to introduce the various clubs of Durfee to new students and to remind old timers of their opportunities.

In October, a highly successful membership drive was sponsored and the Get Acquainted Dance was held. The Pigskin Hop preceded the Thanksgiving Day game, which was followed by the Football Banquet in early December.

An unusually fine concert by a rising young pianist, John Moriarty, '48, a former member of the Student Council, was feature of the annual S. A. A. Assembly.

The Officers' Banquet was held in April and the Awards Assembly in May to honor the leaders of all classes at Durfee.

In concluding the report of another successful year, the Student Council extends to the Class of 1950 its best wishes.

Officers are as follows: president, John F. McMahon '50; vice president, Alexander D. Johnson '51; secretary, Joan R. Kaufman '52; Charles M. Moran '50, Jane C. Larocque '50, Charles S. Isherwood '50, Robert Ponte '50, Herbert R. Chase '50, Santi Di Ruzza '51, Judith L. Bergeron '51, Joseph E. Mullaney '51, Kenneth D. Marum '52, Jean B. Crawford '52, Andrew J. Farrissey '53, Marilyn Stys '54 Eleanor Dubiel '54.



## MUSIC DEPARTMENT



## MUSIC DEPARTMENT

Durfee's three musical organizations, the band, orchestra and chorus, have completed another busy year.

The band, under the direction of Mr. Faust Fiore, is the organization which helps to keep the morale of the football and basketball teams high, represents the school in parades and gives at least one concert a year.

The band also has its officers, who usually consist of a librarian and two assistants who take care of the music, and a business manager, who takes charge of the instruments. These are elected by the members. There is also a band master chosen by the instructor.

The orchestra is one of the most important organizations in the music department. It plays at assemblies and concerts, competes in the State Festival, and gives aspiring musicians of Durfee a chance to play in a real orchestra that performs in public. Its members form small instrumental groups to play at teas, luncheons and other functions.

In our past four years at Durfee, the orchestra has always presented, with the chorus, a Christmas Concert. This year, the orchestra accompanied the chorus for the Gilbert and Sullivan operetta "The Mikado". Playing for the Class Day and graduation exercises, as always, concludes another busy and enjoyable season.

The first presentation of the Durfee Chorus for this year was the "Christmas Story," in which the Verse Choir and the Boys' and Girls' Glee Club participated. This beautiful pageant, given at St. Anne's Auditorium, was under the direction of Miss Helen L. Ladd and Miss Frances Shaughnessy. During this season, too, the Chorus marched through the corridors singing traditional carols.

Singing by the chorus was a feature of the famous operetta, "The Mikado," presented on March 24. On April 1, several members of the chorus appeared in a concert sponsored by the Massachusetts Music Educators' Association.



## BANK CASHIERS

This organization has been in existence for over two years and has handled well over \$25,000 of the students' savings.

Every Tuesday morning is Bank Day. There are cashiers assigned to each building to receive deposits brought to them by the home room directors. These deposits are checked thoroughly. A weekly report is then typed showing deposits from each home room; a comparison of the last three weeks' deposits is also made. On Monday morning the bank books are returned to the home rooms and distributed on Tuesday.

Mr. George C. Hoar, head of the commercial department, is faculty advisor.



## CAMERA CLUB

The Camera Club again this year has been engaged in interesting and educational photography projects as an extra-curricular activity.

Its activities have consisted of picture-taking contests, listening to professional speakers and a series of lectures, accompanied by film-strips, on the subject of picture taking.

Club members, trained in the operation of Audio-Visual Aids to Teaching, have contributed a large amount of their time in the promotion of that phase of education.

The officers and members have combined their efforts in profitably spending time in this extra-curricular activity.

Officers are Richard A. Larter, president; David Feldman, vice-president; Pauline Medeiros, secretary. Faculty advisor is Mr. Joseph J. Lawlor.



## COMMERCIAL CLUB

The Commercial Club is one of the largest organizations at Durfee. Only commercial seniors who have attained a high degree of scholarship may join.

The purpose of this club is to create higher standards of commercial scholarship, to arouse greater interest in commercial education, and to provide vocational guidance to its members. This club has been very successful in the past year due to the co-operation of its members and the conscientious work of its officers.

Mr. George C. Hoar, head of the commercial department, is the advisor.





## DEBATE TEAM

The debate team is one of our most precocious organizations. Last February Eleanor Dubiel, president of the freshman class, debated for Durfee against Classical High. Last year as a sophomore, Clinton Levin, now a junior and president of the Speakers' Bureau, debated in the finals of the Narragansett League tournament.

If the debaters are sometimes impractical in proposing tactics, then their coach, Mr. Paul Buckley, balances them well with sense and precision, for he is a mathematics teacher.

Members of the varsity team are Eleanor Dubiel, Jocelyn Eklof and Clinton Levin. Members in training are Lea Alexander, John Fletcher, Marilyn Morin, William Pelton and Thomas Powers.

If the team has a fine standing, it is because Miss Elizabeth Leonard, who coached the team until this year, worked hard to educate young debaters.



## LE CERCLE FRANCAIS

The French Club is an active organization whose purpose is to promote a better understanding of French culture and civilization. It is open to students who have had two or more years study of the language and comprises some 28 members.

The group meets twice monthly for interesting programs consisting of French music, plays, etc.

Recently a very successful French tea was given by the club, with some 100 guests attending.

At present the club is working on several projects which it is hoped may be completed this year. One is the reproduction of a French village in miniature, and another, reproduction of the native costumes of various provinces of France.

The purchase of some pictures by famous French artists and musical recordings of French folk songs is also planned.

The officers are Nancy Kirkwood, president; Eva Levesque, vice-president, and Sandra Cohen, secretary. Club advisors are Miss Margaret Dailey and Mrs. Emily B. Campbell.

Right — "The Little Princess"



Below — Durfee Thespians



Above — "Sitting Pretty"



Left — "The Weeds"



## DRAMATIC CLUB

After the children are tucked in for the night, "baby-sitting" is a dull job. What shall I read? Aha! Here is my high school Record Book! How well I remember those happy, carefree days with the D. D. C! Look at the pictures of "T. N. T.," which we wrote and produced ourselves — the Thespians of Durfee.

"The Little Princess" was given by our younger members for a children's matinee.

The whole city knew "Belvedere" was sitting pretty at "Curtain at Eight." Bob Higgins made a real hit as the male "sitter," who crowned Durfee's prettiest girl that night.

The annual "Hilltop Revue" brought out the school's best talent and proved popular as ever. A group of members went to Emerson College, Boston, to a drama clinic.

The Massachusetts Drama Festival was held at Hingham our senior year, and delegates fortunate enough to be chosen journeyed to York, Pa. to the National Thespian Conference there.

Our last play was an outdoor production for the American Association of University Women in June.

The year held fun as well as work. We started with a large and noisy Halloween party, held a strenuous but exciting mystery hike, and a jolly Christmas party for alumni.

I wonder if those babies of 1950 will have as much fun at Durfee in 1965.



## DER DEUTSCHE VEREIN

The German Club, known officially as Der Deutsche Verein, with a membership of 57 students, all of whom are studying or have studied German, has enjoyed an active and successful year.

The programs have included guest speakers, slides and movies of Germany, and a number of social activities. The correspondence of club members with students in Germany, a practice started several years ago, has continued to create a personal interest in the present day condition of the life of German boys and girls, and has brought about a feeling of good will and friendship among the youth of both countries.

The German club has always striven to develop an interest in all things German—the literature, the language, personal correspondence, the historical and cultural background—and through the proper comprehension of these to bring about a more complete and better understanding of life in Germany today.

Officers for the year were Doris Swales, president; Richard Quigley, vice-president; Georgette Kneisel, secretary; and John Baron, program chairman.

Miss Marie V. Shalloo is faculty advisor.





## HEALTH CLUB

The main purpose of the Health Club is to promote health among Durfee students through the development of self-guidance in matters pertaining to physical well-being.

Although membership is limited to the sophomore class, the projects sponsored by the club benefit the entire school.

The officers of 1947 opened the program of activities with a slogan contest in preparation for a clean-up drive to be held later in the year. All classes were invited to participate. The awards offered were two tickets to the New England Basketball Tournament and a full year subscription to the Hilltop. Selection of winners proved a difficult task but after much deliberation, the prizes were awarded to Rochelle Lubinsky, Segrid Connolly and Francis Hardro.

The next project undertaken was the Annual Health Assembly. After careful planning, an entertaining, as well as educational, program was offered to the student body.

The most important project of the club was the Annual Clean-Up Campaign, which was held in April. Keeping the school and campus free of debris was stressed throughout the drive.

The successful outcome of the various activities of the club was made possible through the cooperation and hard work of all its members under the supervision of Miss Angeline B. Crispo, faculty advisor.

Officers of the club are as follows: President, William Crowther; vice-president, Claudette Gagnon; secretary, Velma Travers; girl councillor, Mary Powers; and boy councillor, George Graboyes.



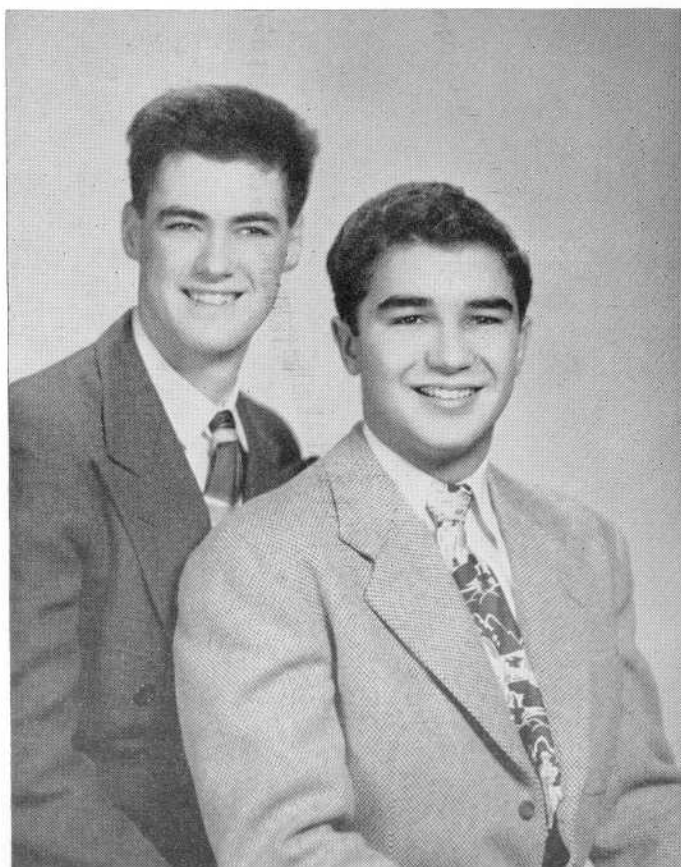
## THE HILLTOP

The Hilltop, which has just completed its 28th year, is published by the second year journalism students under the guidance of faculty advisor John T. Crowley. As the only Bristol County weekly high school paper and one of the few Massachusetts high school weeklies, the Hilltop has become as much a tradition as class rings or "pep rallies."

The policy of the staff and the paper has always been to keep the student body in touch with important school activities, to express editorial opinion in an interesting manner, to present features with a variety of appeal, and generally speaking, to promote the best interest of the school.

By handling the Hilltop, the senior students are given an opportunity to put the journalistic knowledge they learned in their junior year into practice, by actually publishing a paper.

The responsibility for a good paper rests not only on the writers, but the readers as well. Because of the cooperation and interest of the student body and faculty, the, '49-'50 Hilltop was truly a successful series of publications.



## HOME ROOM DIRECTORS

The Home Room Directors organization is the largest elective group in the school. Its membership is drawn from all home rooms, which early in the year elect a boy and a girl whose marks qualify them to serve.

The duties of the directors are many and important. In the home room, the director takes the attendance, reads the bulletin, stimulates campaigns, and takes general charge in the teacher's absence.

This group, really the junior organization of the S. A. A., has become almost indispensable in carrying out various projects, such as the Red Cross and S. A. A. drives.

The officers of the Home Room Directors are a president from the senior class, who becomes a member of the Student Council, and a vice-president-secretary from the junior class, who keeps the records.

This year the group has been led by President Robert Ponte and Vice-President-Secretary Edward Harrington.



Left — Trimming the tree

Center — Freshman Browsing Group



Right — Christmas Art Exhibit





## LIBRARY AIDS

The Library Aids Association is a group of students chosen from the Principal's and the All-A Lists. Its corps of workers is an outstanding one because of scholastic standing, dependability, cooperation, and general helpfulness of its individual members.

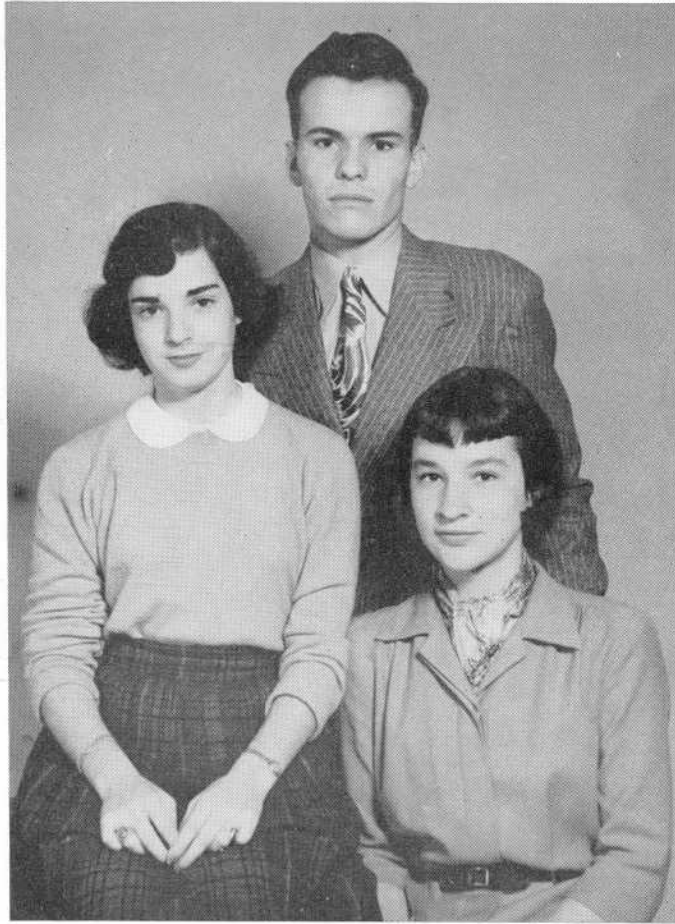
Many of those listed in this service group hold major school offices and are very busy students; yet, because they recognize the importance of community responsibility in a democracy, they give their time and energy to maintaining and building up an interesting, active school library. Every day they are called upon in turn to discharge their obligations of giving out library passes to about 100 students. Each period they carefully check these passes, help readers find necessary references, distribute materials requested by teachers, keep library shelves orderly, and mend books and magazines.

The library could not function without the service of these aids, who are always on hand when there is a special project to be carried out quickly, such as the checking of every single book in the library required by the Fall River School Department last spring and the listing of every departmental book being carried on now. In preparing special exhibits, library aids have been called on to assist.

The library becomes the center of the Christmas spirit in December and its tree and other decorations make it an attractive setting for reading Christmas Literature and celebrating Christmas parties.

In encouraging more students to use our own library for high school research and to extend their education by means of leisure time reading, the aids are valuable, because most of them are especially interested in educational growth through reading and know the good books and magazine articles in the library. Library aids really earn the recognition they receive.

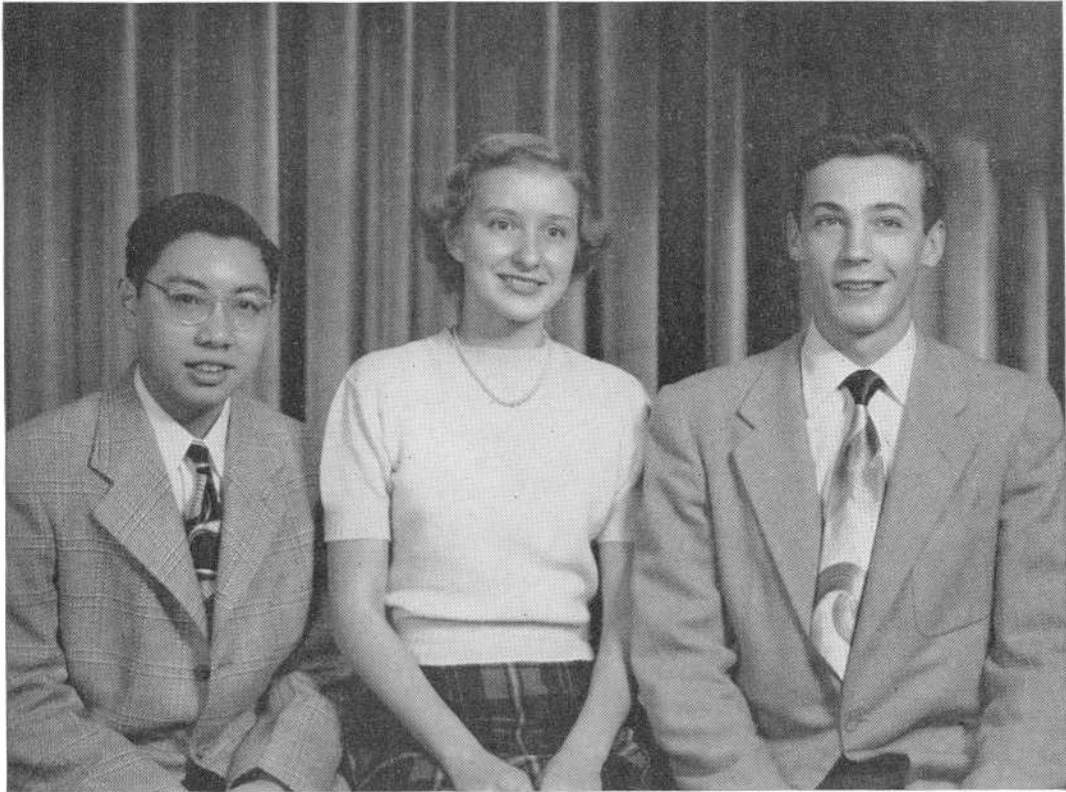




## LITERARY CLUB

For the past 16 years the Literary Club has been a source of encouragement and inspiration to those students who possess a talent for writing or literary criticism. This year poetic contributions were more numerous than short stories or essays.

There has been little publicity to announce the presence of the club, but nevertheless many students from all classes were enrolled in it. The constant work of these members and the able leadership of our faculty advisor, Miss Katherine F. Lomax, have made the club an outstanding organization.



## NATIONAL HONOR SOCIETY

Mu Kappa Delta Chapter of the National Honor Society is a purely honorary organization with its members elected from the upper 25 per cent of the junior and senior classes. The society symbolizes the qualities of scholarship, leadership, service and character. Members are chosen by a faculty committee and are judged on the basis of their high scholastic standing.

These newly chosen members are formally inducted into the society during an impressive spring ceremony. During this assembly the four torches—representing the four characteristics for which the society stands—are lighted.

Service, character, scholarship, and leadership are the torches which symbolize the goal one should strive to reach both in school and in future life.



## SANITATION COMMISSION

Under the capable direction of Miss Angeline B. Crispo, faculty advisor, and the chairmanship of Alex Johnson, the Sanitation Commission, better known as Sanco, has completed its fourth successive year of service to Durfee High School.

This organization is generally composed of the president and vice-president of all four classes, the editor of the Hilltop, president of the Home Room Directors, and the officers of the Sophomore Health Club.

Its main purpose has been to maintain cleanliness about the school and campus, and at the weekly court sessions to try any student who deliberately violated the rules of the commission.

An innovation this year has been the requirement of all home room health councillors to observe and then report about the unsanitary conditions of school. In this way the commission has hoped to solve many health problems.

Sanco, in collaboration with the Sophomore Health Club, has sponsored clean-up drives. It has also backed the assemblies and contests by the sophomore group.

Because of its activities, the Sanitation Commission has gained merit and recognition. It has indeed endeavored to create more healthful conditions about Durfee.



## SPEAKERS' BUREAU

The Speakers' Bureau is the organization which is much in demand when publicity is needed for activities. In fact, much of the success of extra-curricular activities is due to the efforts of the Speakers' Bureau throughout the entire scholastic year.

Membership in the bureau is limited to seniors, chosen on the basis of their accomplishments in junior public speaking classes. Members of the Student Council and the Debating Society also participate in the activities of the bureau, ex officio.

Speakers' Bureau Members are assigned definite home rooms as the field of their endeavor. To those rooms they go to explain to fellow students the reasons for joining the S. A. A., for seeing a Dramatic Club production, or for lending their support in one way or another to the many good causes which come along in the course of a year.

This year the club has functioned under the direction of Mr. Ralph Fletcher. The officers are Clinton Levin, president; Joyce Jones, vice-president; and Eunice Evans, secretary.

Membership in the Speakers' Bureau is not all drudgery. The club offers friendship through club meetings and social activities. Because of this contact with others, students learn a better sense of values, through both oral and social expression.



## PORTUGUESE CLUB

The purpose of the Portuguese Club is to promote the educational, civic, and recreational development of its members. It was also established to acquaint its members with the Portuguese and Brazilian civilizations.

Membership is open to all pupils who have taken Portuguese one or two years. The direction of the club is entrusted to its officers under the supervision of their teacher. During special meetings the activities of the club have been organized in order to acquaint all its members with the Portuguese and Brazilian ways of life and to give them occasion to practice the Portuguese language and also derive enjoyment.

In social activities much has been accomplished. A dance in November was a success and in April a Parents' Night was also an occasion for the pupils of the classes of Portuguese to show their ability and accomplishment in learning the Portuguese idiom.

Pictures of Portugal, Azores, and Madeira were shown indicating the pupils' ambition to know the Portuguese world.

The club motto is: "Better Citizens."

Officers are Albert Texeira, president; Joseph Miranda, vice-president; Delores Martin, secretary. Class secretaries are Ida Medeiros, Doris Bishop, Patricia Camara, Delores Travis and Lorraine Reilly.





## MATHEMATICS CLUB

The Mathematics Club was formed for the first time this year under the direction of Mr. Joseph B. D'Adamo. It is opened to all sophomore, junior, and senior students who are interested in mathematics and who have had, at least one year of algebra.

It was formed with the idea of promoting interest in mathematics and to study certain interesting matters connected with mathematics which do not usually find a place in the classroom.

The meetings are held once monthly. The business meeting is followed by a talk and discussion on some mathematical subject given by an invited speaker.

The officers of the club are: Paul Lavoie, President; Clinton Zalkind, vice-president; George Shapiro, secretary; and Edward Kaplan, Financial Secretary.



## RECORDS CLUB

The Records Club is one of the newer organizations in Durfee.

The aims of this club are to promote the appreciation and understanding of music among students and to build a record library for the school.

Regular meetings are held after school on alternate Mondays from September to May, inclusive.

Programs for the regular meetings usually consist of discussions of various composers, followed by the playing of their recorded music.

Membership is open to pupils of all classes.

The faculty advisor is Miss M. Dolores Burns.

Officers are Rochelle Lubinsky, president; Deborah Radovsky, vice-president; Norma Matzkin, secretary; and Alice Ann Crawford, treasurer.

## THE TRAFFIC SQUAD

The traffic squad, the first student group to be organized under the S. A. A., has been in existence over 25 years. During the past 22 years Miss E. Estelle Miles has been its faculty advisor.

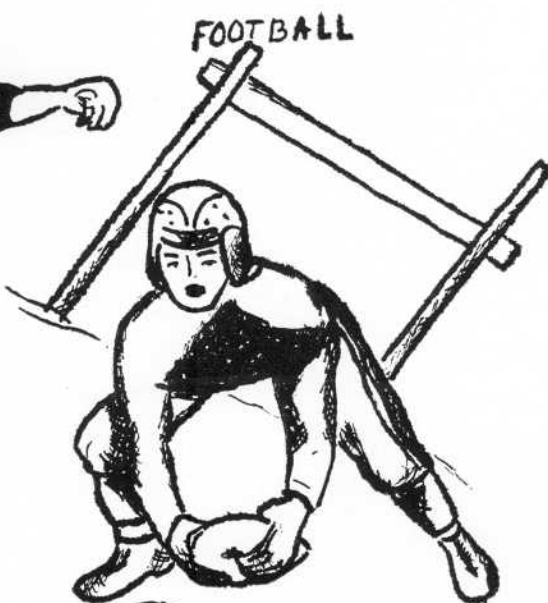
About 15 years ago Mr. Carroll obtained permission from the Fall River Police Department to have "Do Not Enter" signs placed on Rock Street at the intersections of Cherry Street and Locust Street during the time pupils are passing from one building to the other. In the early fall of 1949, Rock Street was made a one-way street from Bedford Street to Highland Avenue, thus cutting in half the number of student traffic officers needed to put these signs in place.

As in previous years, traffic officers have been on duty in the corridors and at the doors during the passing of classes. This year, however, they are not keeping traffic moving in any particular direction, but are placing and removing pegs under the corridor doors. Having a smaller school enrollment this year, at Mr. Carroll's request we have tried out several ways of routing traffic and have finally eliminated the one-way traffic on the staircases.

Much credit should be given to the traffic officers, to their advisor, and to the student body for the cooperation they have given one another.



BASEBALL



FOOTBALL

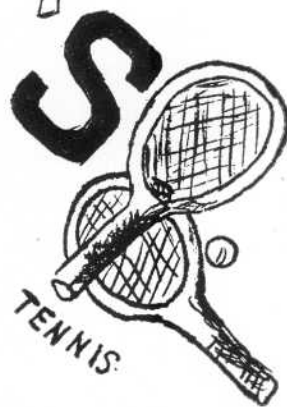


BASKETBALL

# SPORTS

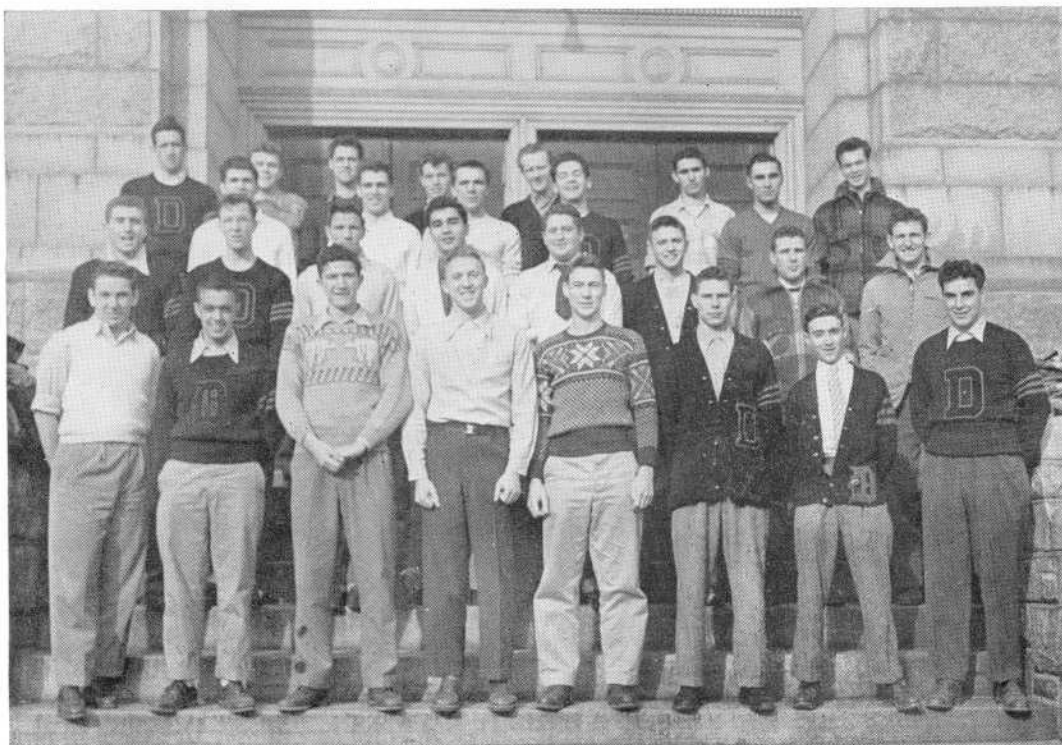


TRACK



TENNIS

Nancy  
McDonald  
'50



## VARSITY CLUB

The Varsity Club may be considered exclusive in that it grants membership only to those Durfee boys who have earned a varsity letter in the field of athletics.

This year the club was extremely active and boosted a roster of members sincerely interested in the affairs of the organization. Faced with the matter of the school's inability to purchase more than nine sweaters for 27 football letter recipients, the boys set about to raise funds to supply all lettermen with at least one sweater per year. A dance, a sale of red and black hats and the annual Varsity Night production were among the moneymaking schemes devised by the athletes to accomplish their purpose.

Later in the year, members and their friends spent an enjoyable afternoon and evening at the annual outing held at Mr. Urban's lakeside lodge.

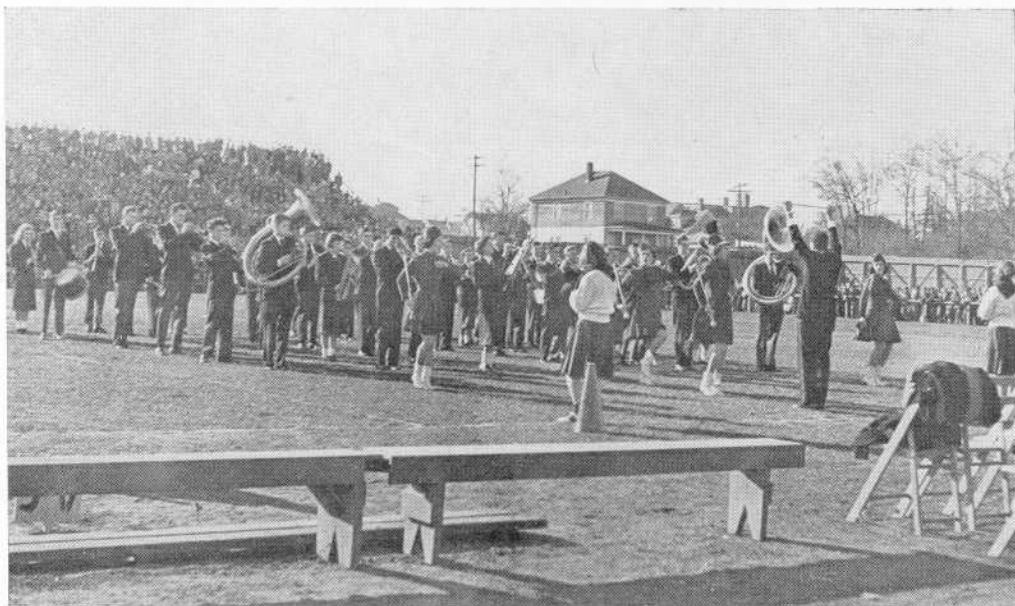
Officers are Richard Torchia, president; James Moniz, vice-president; Joseph Mullaney, treasurer; Robert Vachon, secretary. Coach Urban is faculty advisor.



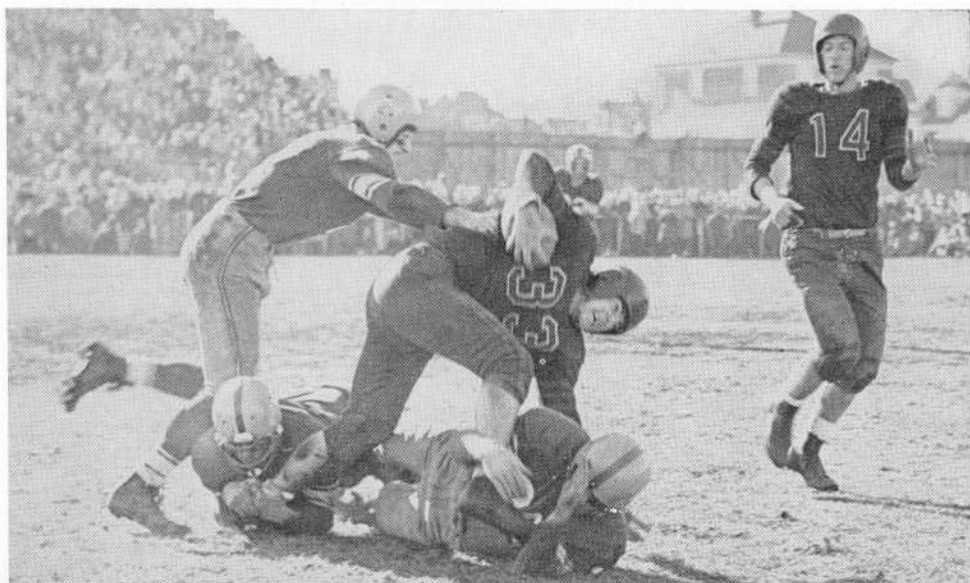


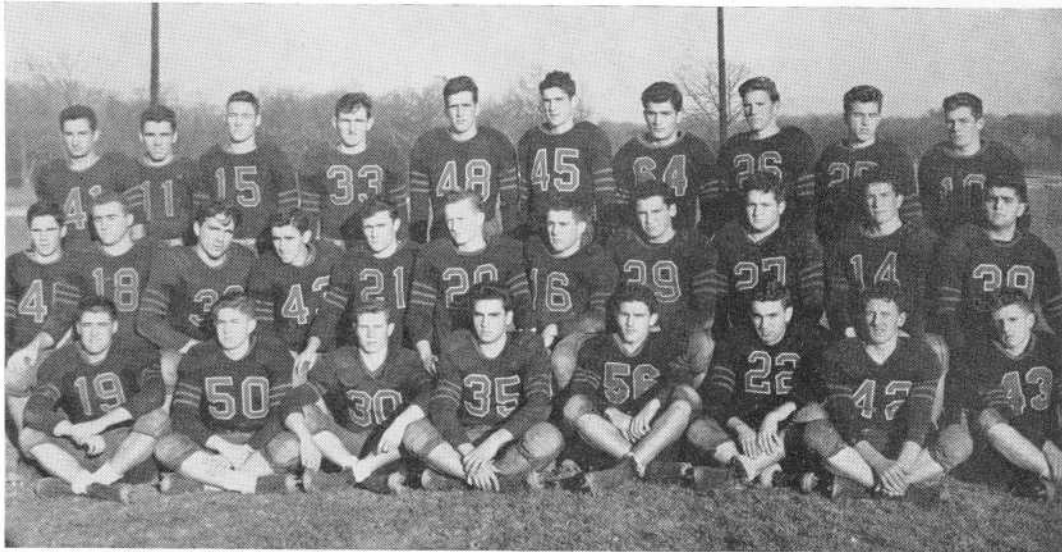
Left — SAA Pep Rally  
October, 1949

Center — Our Band at  
Sargent Field



Right — Action at  
New Bedford, 1949





## FOOTBALL TEAM

Gridsters of the Class of 1950, in their last campaign for the Red and Black, attained a 4 and 6 record, but this doesn't reveal the grit and determination displayed by the Hilltoppers. Two of the defeats were by a single point, and two others by a lone touchdown.

Fifteen members of the squad donned their Durfee uniforms for the last time on Nov. 25, when they were downed by a superior New Bedford eleven, 40-6.

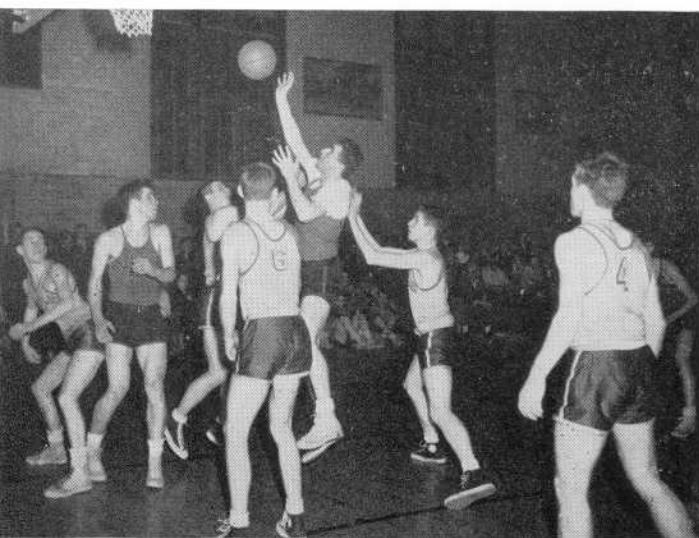
Highlighting the school's season on the gridiron was the work of "Durable Dick" Torchia, who was honored by several newspapers as all-Bristol County. The big end set up numerous touchdowns with his pass receptions, and frequently halted opponents' plans by smearing their attempted end runs.

Recognition by sportswriters was won also by Don Montle and John Gianakos.

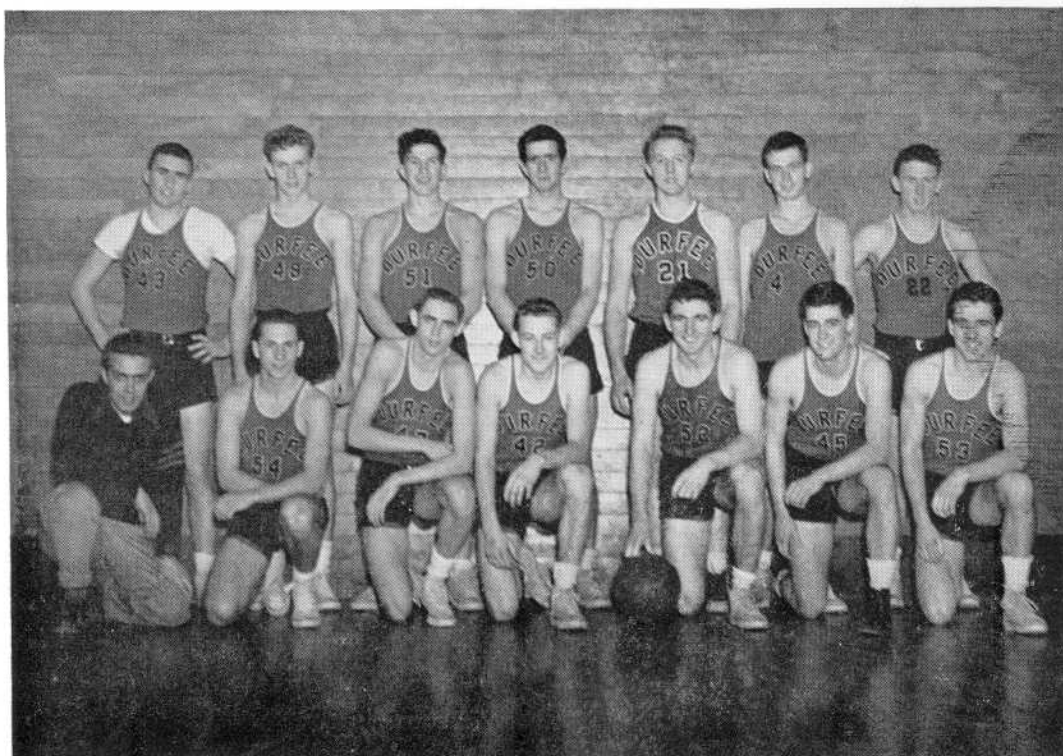
Dick Dopart, Jeff Sullivan, Walt Stukus, Lenny Arruda, Ernie Elias, Brud Hadley, Tex Bramblett, Bob Dunlop, Don Clegg, Norm Cohen, Bill Cabral and Jim Wood completed the roster of seniors on the squad. All wore the school's colors with honor and traditional Durfee courage.



"THE KIDS" CAME FORMAL



ACTION IN THE COYLE GYM



## BASKETBALL TEAM

The hoop season of 1949-50 gave Durfee followers another trip to Boston Garden where the Hilltoppers participated in two action-packed battles that climaxed another thrilling season.

For the first time since the Bristol County League was reorganized the Red and Black didn't finish on top.

Attleboro, Durfee's big threat in past seasons, landed the bunting with a 9-1 record, their only setback coming at the hands of the Urbanmen.

Opening the campaign with three straight league triumphs, Coach Urban's forces then bowed to a weak New Bedford quintet, and in the six remaining contests lost only to champion Attleboro.

On an overall basis, the Hilltoppers engaged in 19 tussles including the Garden tilts and the one against Cheverus in Portland, Me., and emerged the winner 13 times.

Dick Torchia and Captain Dick Ainsworth were the only final year men on the starting five. The Hilltoppers based their play on a strong defense and it was Ainsworth who spearheaded the tight barricade.

Torchia's height was an asset but it was mid-season before he really began to click, and in the tournament he played superb ball.

Norm Burns, Ray Walsh, Steve Goldberg and Brud Hadley, the other seniors on the varsity, provided the reserve strength.

In the opening round of the Tech Tourney, Durfee squared off against Waltham and it wasn't until after the automatic that the issue was decided, but the Urbanmen won out, 49-44.

In the semi-final fracas, Durfee was matched against Bristol County champion Attleboro, and enthusiasm was at a high pitch as both had won and lost against the other. The Jewelers emerged victorious, 38-34.



## BASEBALL

Since the opening of the baseball season follows the deadline for Record Book copy, nothing about the sport can be given here except comment about the team's potentiality for a successful record in 1950.

The nine that takes the field against Coyle in the opening game on April 28 will carry the burden of maintaining a Durfee win streak of 30 consecutive games — no easy task; but 16 hold-overs from last season, seven of whom were first stringers, give Coach Urban the nucleus of another well-balanced aggregation. Familiar to Durfee baseball fans are the names of Stan Sieczkowski, Gil Medeiros, Jim Pimental, Walt Stukus, Fred Cyr, Bob Dunlop, Don Montle, Tom Gastall, Ken Baxendale, Bill Perry, Bill Kennedy, Jack Perry, Dick Sullivan, Bob Vachon.

In their ability and that of others similarly talented but as yet undiscovered the student body places its confidence for another successful season.

## TRACK

Early season news of the track team is featured by the appointment of Mr. Thomas Hammond as coach, succeeding Mr. Frederick J. Harrington, who has resigned the position. The mentor has appointed Colquitt "Tex" Bramblett captain, and is presently engaged in scheduling interscholastic meets for the track and field athletes.

## TENNIS

The tennis team also has lost its coach, Mr. William Nugent having resigned. His successor, Charles Briggs, will have three seniors — Norm Burns, Paul Grozen and Bernie Taradash — as the nucleus of his squad.





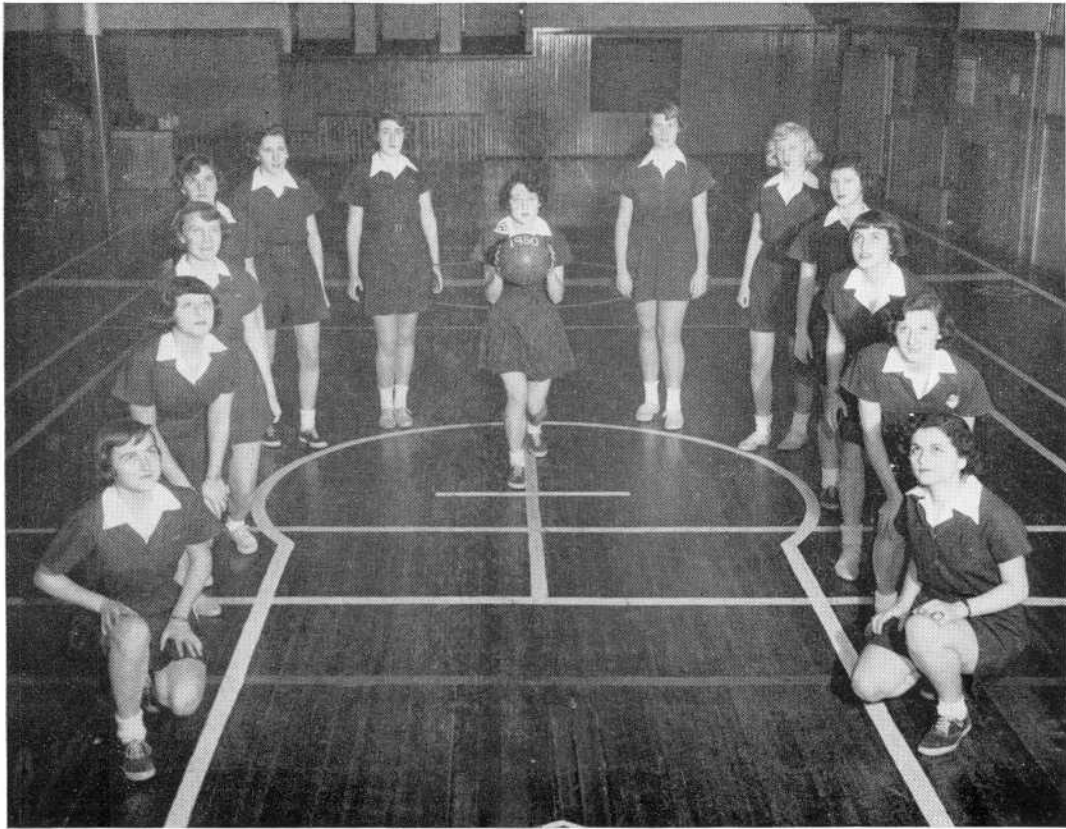
## CHEERLEADERS

No high school athletic contest would be complete without its two competing teams, and of course, without its cheerleaders. Competition in regard to intricate formations, complicated cheers, and colorful outfits is keen among the girl representatives of each school. Just as the athletes provide thrills on the gridiron, the court, and the diamond, the cheerleaders entertain the spectators with tricky maneuvers, besides leading cheers for the team.

The duties of a cheerleader are not simple. She must practice strenuously in order to perfect the motions of at least 25 cheers, which must be performed with perfect timing and coordination. She must be present at all games regardless of the weather—and at times Alumni Field can be very wet indeed. She must realize that she is in the public eye both on the cheering floor and off, and must conduct herself accordingly at all times.

Arduous as are the duties, to be selected as a cheerleader is the ambition of many Durfee girls. In the spring, tryouts are held for sophomore girls, all of whom must have passing marks for the third term. A trio of outside judges, chosen by the principal, select the four finalists, who will then serve on the squad during their junior and senior years.

The members of the squad for the 1949-1950 season were Nancy McDonald, headcheerleader; Betty Ann Cohen, Lillian Dias, Marilyn Moran, Claudette Gagne, Joan Lamond, Marion O'Loughlin and Verna Spurduti. Miss Marie V. Shalloo is faculty advisor.



## GIRLS' BASKETBALL

The 1950 girls' varsity basketball team closed its season with an impressive eight and one record to tie Dighton for first place honors.

Durfee's only loss, which was handed them by Dighton on the latter's court, determined the tie. Their record is as follows:

Durfee	44	Dartmouth	11
Durfee	22	Dighton	27
Durfee	36	New Bedford High	34
Durfee	28	New Bedford Voke.	23
Durfee	18	Fairhaven	17
Durfee	23	Case	16
Durfee	25	Somerset	22
Durfee	20	Westport	12
Durfee	23	Bristol Aggie	9

The senior girls who played were D. Arnold, C. LaBonte, C. Brownell, J. Allen, J. Larocque, M. L. Walkden, A. Surprenant, and V. Travers.



## THE GIRLS' NUMERAL CLUB

The main objective of the Girls' Numeral Club is to further an interest in sports. All girls in the three upper classes are eligible for membership providing they have the necessary requirements, which include good leadership and an interest in sports.

Sixty members comprise the organization. There are 20 seniors, 20 juniors, and 20 sophomores. New members are voted in by the club in November.

Girls who are good leaders conduct sophomore gym classes. Some members officiate at volleyball and basketball games.

Among the sports played are basketball, volleyball, field hockey, badminton, softball and bowling.

To retain membership in the club, one must have regular attendance and earn credits.

The club also has social events, including the Alumni Reunion and the Spring Outing.

Officers are Mary Lou Walkden, president; Claudette LaBonte, vice-president; Phyllis Walsh, secretary, and Miss Virginia W. Frost, faculty advisor.

## ACKNOWLEDGEMENT

The Record Book is a cooperative project, dependent on the united efforts of many.

We of the staff are happy to express our gratitude to those who have assisted us in the task of publishing the book. We acknowledge our debt to the following:

Our classmates, for their cooperation in submitting promptly glossies and information about themselves.

Faculty advisors and club officers, for their promptness with group pictures and write-ups.

The many commercial organizations — photographers, engravers, printers and binders — for their fine workmanship and fair dealing with us.

The Fall River Herald News for group photographs of athletic teams and other organizations.

Our faculty advisors, Miss Katherine L. Hogan and Mr. John T. Crowley, whose counsel has been of extreme importance in the successful completion of the book.

*Autographs . . .*



## Autographs ...

Thomas S. Rock.  
 Mestreda Cayer  
 James Machado  
 Stanley J. Sieg Kowaki  
 John L. Lennin  
 Wm. S. Goodrum Jr.  
 Mona L. Kozel  
 Paul Parente  
 James Kennedy  
 Norman Richigor  
 Alan P. White  
 Ralph Jones  
 Ray Santhier  
 Thos. Reitano  
 Marilyn Joel  
 Edna Schuber  
 Luk Capast  
 Edward Kiewola  
 Robert Michael  
 Douglas Khoury  
 Walter Ronka  
 Arlene Bousen

John Linap  
 Marshall Elblow  
 Nancy Mose  
 Linda Corvello  
 Evelyn Corvello  
 William R. Kelliter  
 Wm. LaRochelle Jr.  
 Constance Oliver  
 Joan Chapman  
 William Clement  
 Kenneth Bray  
 Ronald Mento  
 Velma Lee Travers  
 John R. Torres  
 John J. DeFossa  
 Leonard R. Aranda.

SUCCESS

To The Class of 1950

LORING STUDIOS

392 SPRING STREET

Opposite St. Mary's Cathedral

Telephone 8-5022

*Congratulations to the most beautiful  
graduating class. The girls were really  
lovely in their Michel exclusive gowns.  
May the future be as bright as the look  
in your eyes and the dreams in your hearts.*

*Michels Bridal Salon*

*P. S. The boys looked good too.*

---

Best Wishes from Your Fellow Classmates

VIVE SOCIETY  
AMICI FRATERNITY

Amici

Frank Hadley  
James Greer  
Preston Smith  
Richard Deaner

*President*  
*Vice-President*  
*Secretary*  
*Treasurer*

Vive

Betty Ann Bailey  
Alice Ann Crawford  
Mary-Whit Bowen  
Dorothy Arnold

When

you want a photograph

you want a fine photograph

and that's the only kind your official photographer takes!

Photograph Studio

4th Floor

CHERRY & WEBB

---

*Compliments of*

FALL RIVER HERALD NEWS

Good Luck to Our Fellow Classmates

## THE SATURDAY NITE CLUB

### EXECUTIVE COMMITTEE

#### OFFICERS

Co-Chairmen —	Carol Joy Jones Richard Arrichiello
Secretary —	Beverly Stevens
Treasurer —	Dean Crook

---

## TRI-HI-Y and HI-Y CLUBS

#### Tri-Hi-Y Seniors

Lucille Jabbour, President  
Joyce Jones, Vice-President  
Sarah Jones, Secretary  
Norma Simmons, Treasurer

Ellen Cantwell  
Claudette Gagnon  
Elaine Galitsky  
Carol Jones  
Claudette Labonte  
Jane Larocque

Rochelle Lubinsky  
Nancy McDonald  
Leola Mellor  
Florence Serafin  
Louise Sullivan  
Mary Lou Walkden

#### Hi-Y Seniors

Stephen Goldberg, President  
Donald Montle, Vice-President  
Stanley Sieczkowski, Secretary  
Bernard Taradash, Treasurer  
Stephen Rebello  
Richard Ainsworth  
Robert Ponte





*Engravings by*

**ADVERTISERS ENGRAVING CO.**

*New England's Smart  
Engraving House*

**THE MOST COMPLETE PHOTO-  
ENGRAVING, LITHO AND OFFSET  
PLATEMAKING PLANT IN RHODE ISLAND**

**126 DORRANCE STREET, PROVIDENCE, RHODE ISLAND**

*Autographs . . .*

# FALK'S STUDIO

SCHOOL PHOTOGRAPHERS

177 TREMONT STREET

BOSTON, MASSACHUSETTS

---

*Compliments of*

## FIDAMIES SORORITY

President — Joan Morton

Vice President — Edith Bouley

Secretary — Wilma Dickinson

Treasurer — Madeline Crawford

---

*Compliments of*

**Modern**  
**FURNITURE COMPANY**

376 SOUTH MAIN STREET

*Keep your home up to date with Modern Furniture*

# LUCK AND SUCCESS TO THE CLASS OF 1950

From

President .....James Moniz, '50  
Vice President .....Donald Montle, '50  
Secretary .....Shirley Parkinson, '51  
Recording Secretary .....Ann Louise Hoar, S.H.A. '52  
Treasurer .....Robert Michaud, '50  
Advisor .....Atty. John J. Harrington, '35

## HI-COEDS OF FALL RIVER

*The Bride's Shoppe*

368 South Main Street,



Be Sure to Visit our  
"FORMAL NOOK"

Exquisite  
Selection

for Proms \$14.95 to \$49.95

## CLASS OF 1950

*Felicitations and Success to each and  
everyone!*

## MULLEN BROS.

Diamond Merchants — Silversmiths

254 SOUTH MAIN STREET

*Your family jewelers for over 59 years*

Sincere  
Wishes

To the Graduating  
Class of "50"

## EMPIRE MEN'S SHOP

168 SOUTH MAIN STREET

Phil Dondis    Nate Dondis    Elisee Methot  
Evariste Tavares    Edmund Zmuda

Let Your Classmate

ED ZMUDA

Take Care of You at the

EMPIRE MEN'S SHOP

168 SOUTH MAIN STREET

CLOTHING and FURNISHINGS

*Compliments of*

R. A. MCWHIRR CO.

FALL RIVER'S

LARGEST DEPARTMENT STORE

---

WSAR

AMERICAN BROADCASTING CO.

1480 Kc.

5000 Watts

*Compliments of*

WALTER C. FRAZE CO.

COMPLETE

ATHLETIC OUTFITTERS

for

DURFEE HIGH SCHOOL

9 North Main Street

Fall River

---

*Compliments of*

EAGLE FINANCE CO.

150 SECOND STREET

*Compliments of*

AL DAVIS INC.

10 NORTH MAIN STREET

FALL RIVER'S LEADING

HABERDASHER

---

*Compliments of*

FALL RIVER  
MOTOR MART

998 PLEASANT STREET

Joseph Ayash (Proprietor)

## FORMULA FOR SUCCESS

First, Graduate from High School.

Next, Take a *one-year* Secretarial or Accounting Course in a good Business School.

Then, Attend College, if you can.

A business or secretarial course will **always** be handy—at college, for taking notes or for earning personal expenses; and, if you should drop out of college for any reason (like father's death) you will have a **practical** training to fall back on and to earn a good living.

**Applications for Fall Term Now Being Accepted**

THIBODEAU  
BUSINESS COLLEGE

Hudner Bldg. Opp. Cherry & Webb's

---

Congratulations

to the

CLASS OF 1950

*Meet your friends at the*

GRANITE BLOCK SPA

33 SOUTH MAIN STREET





## HUTCHINSON'S ART SHOP

Pictures — Picture Framing

Artists' Supplies

Diplomas Framed

154 SECOND STREET

## SMITH'S DRUG STORE

*"The Medicine Shop"*

Every Drug Store Need

Opposite the  
Public Library

## TOUHEY'S PHARMACY

Arthur J. Shea

Reg. Pharm., Prop.

Fall River, Mass.

*Prescription Specialists Since 1883*

## CENTRAL RADIO STORES

260 SOUTH MAIN STREET

Fall River, Mass.

Largest Selection of Television  
in Fall River

- |            |            |
|------------|------------|
| ● Magnavox | ● Emerson  |
| ● RCA      | ● Admiral  |
| ● Philco   | ● Motorola |

Our Record Department Has The  
BEST SELECTION IN THE CITY  
PRIVATE LISTENING BOOTHS

*Compliments of*

## BESSE - RUSSELL'S

221—223 SOUTH MAIN STREET

## SAM HALL'S MUSIC STORE

169 NORTH MAIN STREET

*"Everything for the Music Lover"*

Pictures, Mirrors, and Gifts  
Greeting Cards for all Occasions  
Fine Picture Framing

## ELLSAS ART STORE

364 SOUTH MAIN STREET

---

## ROBERT A. WILCOX, CO.

116 BEDFORD STREET

STATIONERY  
SCHOOL SUPPLIES

---

*Compliments of*

EDWARD M. CORBETT

---

Congratulations  
to the  
Graduating Class  
of  
1950

KAPA SORORITY

## FEITELBERG AGENCY INC.

INSURANCE  
and  
TRAVEL

29 NORTH MAIN STREET  
Fall River

---

## LAKE'S

Jewelers Optometrists

42 NORTH MAIN STREET  
Fall River, Mass.  
Phone 9-6372

---

Tel. 9-6191 Evenings by Appointment

## ROBERT'S

Full Dress Rental Service

White Tuxedo Jackets—Tuxedo—Tail Coats  
Cutaways and ALL Accessories

398 SPRING STREET  
Opp. St. Mary's Cathedral  
Fall River, Mass.

---

## NEW ROYAL

Sales Service

134 SECOND STREET  
Fall River, Mass.  
Dial 3-1741

GRAY TYPEWRITER CO.



ADAMS BOOKSTORE INC.

165 NORTH MAIN STREET

Compliments of

BALLWEG and DINERMAN, INC.

29 TROY STREET

Compliments of

LENOR'S

95 SOUTH MAIN STREET

Compliments of

THE CAPITAL NEWS

HICKEY'S PHARMACY

William C. Hickey, Registered Pharmacist

314 South Main Street Fall River, Mass.

Compliments of

WARING

JEWELER

32 NORTH MAIN STREET

Telephone 2-6501

Compliments of

BRAYTON & FERGUSON, INC.

40 ROCK STREET

Compliments of

BRIGHTMAN SHELL SERVICE  
CENTER

Compliments of

THE PARISIAN DRESS SHOP

ALICE & BLANCHE DRESS SHOP

Specializing in

JAUNTY JUNIORS

Compliments of

A FRIEND

Best Wishes to the 1950

Graduating Class

PETRIE STUDIO

SMITH OFFICE EQUIPMENT CO.

TYPEWRITERS RENTED

46 NORTH MAIN STREET

Compliments of

GUIMOND'S BAKERY

212 ROCK STREET

Compliments of

PERSONAL PRINT SHOP

242 SECOND STREET

CASCADE DRUG CO., INC.

John E. F. Cusick, R. Ph., Manager

411 South Main Street Fall River, Mass.

The Drug Store Your Doctor Recommends

Sally Kitchen  
Lucy Kalbackin  
Charles Moran  
Robert Garret  
Edmond Quintal  
Donald Taylor  
Mary Summer  
Ann Rose  
Stephen B. Goldberg  
Jordan J. Dean

To a wonderful principal - Rose Lerner

" " " "

"

"

- Mary Theresa Oliveria

William Botelho  
"John L. Seaman."

George Maisto

Lester C. Wright

Edward Casemira

Sydell Leven

Paul Lavoie

Leola Melloe

Rose Mills

Bernard P. Ryan

James B. M. Ray  
Fred Kessell  
Aaron Brown

George Astor

Paul Krozen

Erene Quellette

Eva Levesque.

Joan Gifford

Katherine L. Hogan

(What a pleasure to work  
under such a man!)

Georgina Larnach  
Robert Halbardier

Ralph E. Chatham

Merley Farff

Donald Peterson

Bird of Luck - Judy Holovic

Roseana Barash

Laurel Ruben

Barbara Merrill

Shirley Southworth

Leo Leger

Lorraine Taylor

Larry Fitzgerald

Gabrielle Gaucher

Benedict T. Correa  
Thomas W. Kennedy

Robert J. Benute  
Virginia Wiley  
Delores Teixeira  
John Corea  
Pauline Silva  
Alice Fernandez  
Betty Ann Cohen  
Aurelio Rodriguez

Silbert Medeiros  
Tony Costa  
George Leandro  
Thomas J. Carreira  
Eddie M. Amaral  
Claire Galland

Joris Waiwa  
Samuel S. C. S. D.  
Alice Peipinko  
Deolinda Isabel  
"Ernett Moura"

Edward Couri  
Harriet Liprah  
Marcia Guperschied  
Arthur Kline  
Harold Katzman  
Wm. Walmaley  
Ronald Gatta  
Eleanor Lynch

Alice Alexander  
Michael Campos  
Barbara Lindsey  
Barbara K. Cohen  
Paul Corcoran  
Frankie Posanio  
Albert Desrosiers  
Claudia Brandao  
Donald Setters  
Donald Kenyon  
Eleanor Wyse

Joan Turner  
Janet Allen  
Dorothy Bernat.  
Sarah Silvia  
John A. Segliardi  
Joan Silvia  
Rockelle Lubinsky  
Lillian Gray  
Sarah Jones  
Betty Pereira  
Julie Medeiros  
Heidy M. Cates  
Francis Hardro  
Agnes Alves  
Phyllis Dowd  
Delores Amaral  
Joan Gurgon  
Joan J. Pratt



Lucille Jablon  
Norma Semmons  
Joanne Simonette  
Helene Sabrosiere  
Loni Medeiros  
Frank P. Wells  
Clarinda Evans  
Conrad Juneau  
Polaris Aguiar  
Charles W. Doyle  
Mary Lou Walkden  
Claudette Sagnon  
Joyce Jones  
Eugene Grace  
Fred C. Ballweg  
Vivian Albuquerque  
Bet Slunlops  
Charles J. Sheddick  
Hermand M. Almeida  
Louis Cabral  
Margaret Cabral  
Janet Sabady  
Betty J. Carley  
Charles S. Sherwood  
Jane Larocque  
Katalie Lillia  
Joan B. Hoyle  
Herbert R. Russe  
Donald F. Munro  
Jeffrey (Jeff) E. Sullivan  
Ronald Fernandez  
Joseph Emara  
Marie Kneisel  
Joan Langton  
Alice E. Harrison  
Grace Hoskin  
Mancy Kukiwood  
Malcolm D. Woodward  
Hilda Moniz  
Pauline Medeiros  
Alberta Yates  
David Lowney  
Gerald Hanley  
Richard Larter  
Carolyn Robinson  
Norman A. Oliveira  
Mamuel Oliveira  
Gilbert Carlos  
William H. Cooper Jr.  
Chris Turner  
Marcia Jencks  
May Silvia  
M. Madeline Amara  
Doreen Luvant  
Carol Jones  
Bob Ponte  
Rita Estenande  
Marie Pineda  
Carolyn O. Crystack