

The Record Book



B. M. C. DURFEE HIGH SCHOOL

Fall River, Mass.



TO JOHN T. CROWLEY, teacher, advisor, friend of the students, we, the graduating class of 1955, dedicate our Record Book.

Year after year Mr. Crowley not only performs his required duties as teacher of English and Journalism, but serves also as faculty advisor of the Hilltop and editorial advisor of the Record Book. Indeed, without the time and energy he devotes to these two publications, they could hardly be as successful as they are.

Thus, through the service of teaching and through the medium of Durfee's publications, Mr. Crowley has given to every student who has ever sought it, his advice and guidance, enriched with knowledge and wisdom, discernment and experience.

May this dedication, then, serve as recognition of this man as an educator; recognition of the services he renders every day and the efforts that attest his devotion to our beloved Durfee and its students. May it be that through this dedication the qualities of sincerity, honesty and faithful service may be fully esteemed.

May this one page of the Record Book symbolize the recognition he so richly deserves for all that he has done for us while students of Durfee, and be significant of the honor and satisfaction we have had in knowing him throughout these years.

Members of the Graduating Class:

Another graduating class from Durfee! It seems impossible. How quickly have gone the last four years during which you have been preparing for this proud day. To you, I am sure at times those years have been slow and lagging ones, but you will find, as you grow older, that while there may be tedious and boring periods, the divine gift of life bears a surprisingly close resemblance to the brief candle of which the poet spoke. In any event, my heartiest congratulations to you as you pause for a bit with some sense of triumph at the milestone of high school graduation.

Now you face a new bit of road — one more difficult in some ways than the ones you have trod to date, and one if anything, more exciting. It will be more difficult because you will find on it fewer guides and will be forced more and more to depend on your own compass of self-reliance. You may think you will like this better, and perhaps you will, but you must bear in mind that from now on, you will be held more accountable personally for the progress you make. Every older person, giving advice to young people at a time like this, likes to talk of pit-falls. There will be those, but I am certain that from the education you have received at Durfee High School and from the training you have received in your homes, you will be able to avoid most of them. You will do it better, I think, if you bear in mind the experience of others and if you develop habits of action and thought patterned on those who think of others as well as themselves. I am sure every one of you knows older men and women in all walks of life who, through inner discipline, have shaped for themselves a manner of action frequently referred to as good form. I am sure you know too, men and women generous and kind, anxious to help without any desire for reward. Find such people and choose them for your ideals. Forget the noisy and vulgar. Forget those whose selfish and greedy ways hurt others and who are hurt themselves. You will find the models to which we refer in your everyday life. You will find them too, in the books and the written thoughts of authors past and present. Develop then, a sense of values and ideals to live by. Observe and read that you may be helped to do so. These and prayer to your God are what you need. Develop taste and fastidiousness.

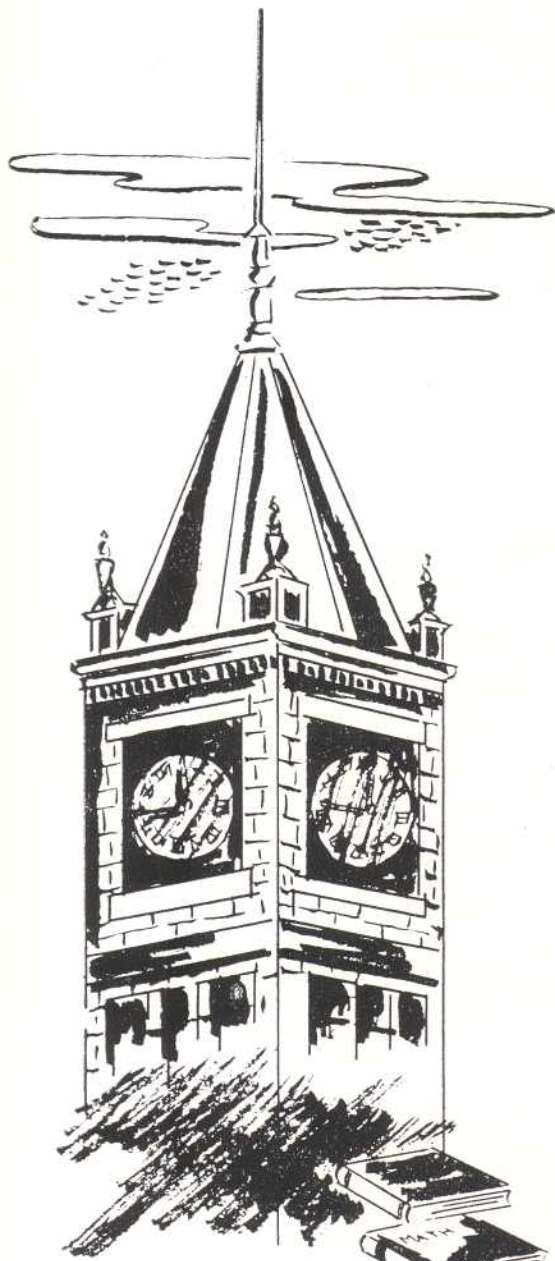
So much for the serious note in a sunny June. Again our congratulations to you and the congratulations of all the community to which you owe so much and which in turn, expects the best from you, and for you.

Sincerely yours,

William S. Lynch

Superintendent of Schools.





*Class
of
1955*



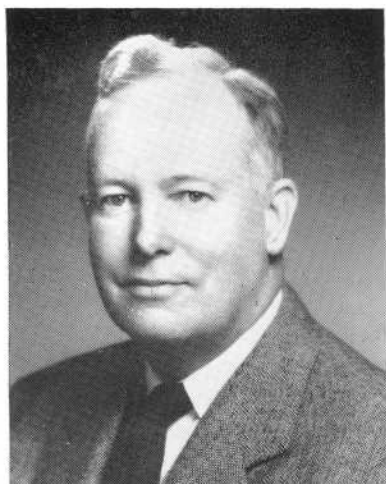
To the Class of 1955:

The calendar of youth counts few days which rival in drama, in poignant sentiment, or in genuine significance the occasion of graduation from high school. You have now arrived at that point; and I hasten to welcome you to the ranks of Durfee alumni.

You experience at this moment a certain satisfaction in having met successfully the test of senior high school education. You realize that in your effort you have had the loving guidance of your parents; and your gratitude to them is deep, if not easily expressed. You are eager now to set out upon the broad highway of adult life, to meet new challenges, and to test your ability to bear ever-greater responsibilities.

You who have seen the launching of the first atomic powered submarine, who have thrilled to the promised conquest of infantile paralysis need not be reminded that there is yet great work to be done in this world. You are needed. Your training, your integrity, your determination to succeed — these, coupled with an abiding faith in God, will prove your true worth. I know that you will do honor to yourselves, to your parents, and to Durfee.

I congratulate you upon your graduation and offer my best wishes for your continued success and happiness.



Ambrose F. Keeley

PRINCIPAL.

FACULTY

AMBROSE F. KEELEY, Principal

HERBERT W. PICKUP, Vice-Principal AMASA F. WILLISTON, Vice-Principal

THOMAS P. CULLEN, Assistant Director of Vocational Guidance

YOLANDE B. LALIBERTE, Associate Dean of Girls

ALICE C. HARRINGTON, Assistant Dean of Girls

Myron T. Ashley
Eugenie W. Bent
Clinton A. Borden
Paul G. Buckley
M. Dolores Burns
Emily B. Campbell
Joseph O. Carroll
Mildred V. Carroll
William A. Carroll
William M. Cleare
James F. Conlin
Mary F. Corcoran
Angeline B. Crispo
John T. Crowley
Joseph B. D'Adamo
Frederick A. Dagata
Margaret G. Dailey
Armand A. Dallaire
Edna U. Delahanty
Margaret G. Doran
Ruth N. Dow
Edward B. Downs
Wilfred C. Driscoll
Romeo J. Dufour
Grace M. Dunn
Ralph J. Fletcher
Carrie T. Foulkes
Virginia W. Frost

Elinor F. Gilbert
Frederic J. Gottwald
Mary C. T. Grandfield
Marjorie Gray
Frederick J. Harrington
John J. Harrington
Margaret M. Harty
Joseph R. Hathaway
George C. Hoar
Katherine L. Hogan
Frank J. Jordan
Mary E. Judge
Margaret F. Keefe
Helena A. Kelley
Daniel Kelly
John E. Kiley
Alice G. Langford
Joseph J. Lawlor
Herve B. Lemaire
Elizabeth L. Leonard
Katherine F. Lomax
Harry P. Lynch
Margarett E. Macdonald
Earl V. Malmberg
Grace L. Martin
Anna G. McCarty
Rose E. McHale
William B. McIlwaine

Mildred A. McMillan
George A. Mitchie
Stephen Nawrocki
Ruth W. Newkirk
Caesar Nobrega
William A. Nugent
Anne L. O'Neil
Margaret H. Powers
Antonio A. Serpa
Marie V. Shalloo
Henry J. Shea
Eva M. Shediack
Charles D. Smith
Dominick R. Sperduti
Anna L. Sullivan
Dorothy C. Sullivan
Helena V. Sullivan
Mary E. Sweeney
Marion L. Torphy
Louis J. Urban
Barbara Wellington
Margaret J. Whalon
A. Wilson Whitman
Helena H. Withrow
Dorothy E. Wolstenholme
Mary Yankopoulos

Lauretta K. Dahill, clerk
Florence M. Burns, clerk

Kathryn A. Lenehan, clerk
Anne T. Coughlin, clerk



Staff



SAM SWIDEY
Editor



FREDERICK A. DRAYTON
Assistant Editor



JOHN T. HURLEY
Asst. Editor



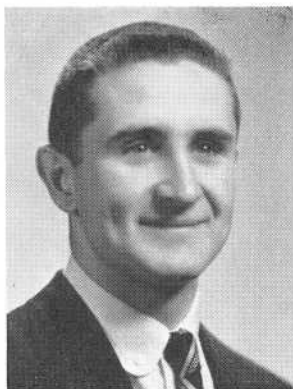
RHODA KAPLAN
Typist



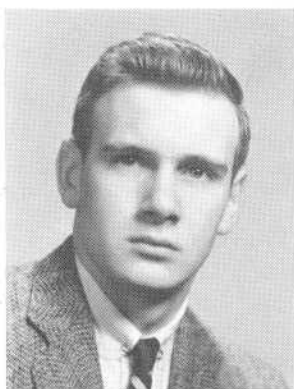
PAULINE MEDEIROS
Typist



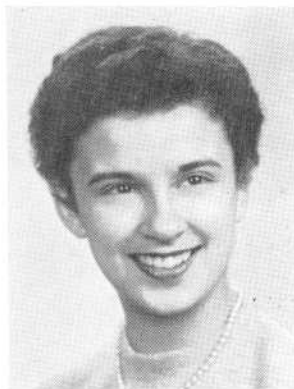
CAROLE A. WISHART
Business Manager



ROBERT CRAWFORD
Sports Editor



ROBERT E. ALLCOCK
Asst. Bus. Manager



JACQUELINE FREITAS
Asst. Bus. Manager



BERYL RILEY
Typist



DOROTHY URBAN
Typist

HALL OF FAME

Ten Highest Ranking Seniors

DAVID DIXON

JANET WINICK

CAROLYN FRAIN

PAULINE MEDEIROS

ANN GOLEMBIEWSKI

FRANCIS SANDOMIERSKI

ROBERT HILLMAN

BENJAMIN SPENCE

THEOPHILUS KULIOPULOS

LOIS WOLPERT

Class Officers

President..... JOHN HATHAWAY

Vice-President..... MAUREEN DICKINSON

Secretary..... JEAN BALDYGA

President of the Students' Activities Association

DAVID SMITH

President of the Home Room Directors

STANLEY DREWNIAK

Editor of the Hilltop

JANET WINICK



WHO'S WHO

Cynthia Bates	Most Popular	Sam Swidey
Marilyn Thompson	Best Looking	Stanley Drewniak
Geraldine Dolinsky	Most Dignified	Dana Brayton
Janet Winick	Most Brilliant	David Dixon
Barbara Makuch	Most Athletic	Fred Drayton
Beverly Costa	Best Dancer	David Mello
Dinah Nobrega	Class Wit	John Britland
Elaine Souza	Most Interesting	John Moore
Lois Wolpert	Best Speaker	Sam Swidey
Janet Winick	Best All-around Student	George Miller
Janet Winick	Most Likely to Succeed	Sam Swidey



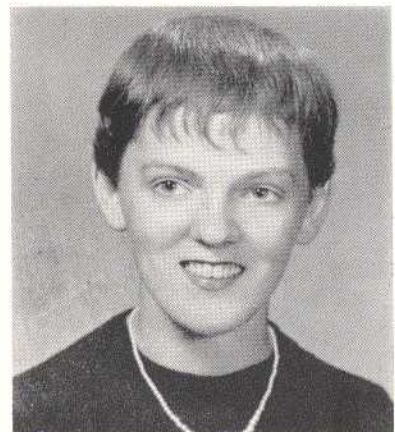
CLASS OFFICERS



JOHN J. HATHAWAY
President



MAUREEN J. DICKINSON
Vice-President



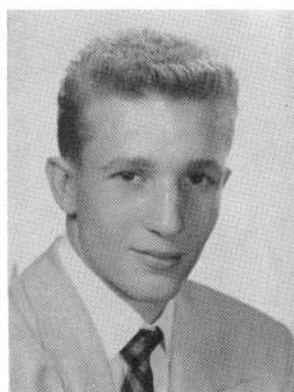
JEAN C. BALDYGA
Secretary



EVELYN MARIE AGUIAR

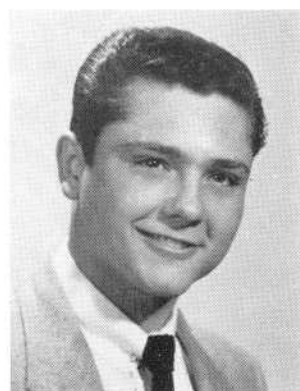
"Eve"

Office Aide 4



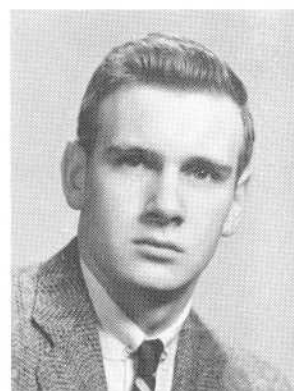
KENNETH AGUIAR

"Ken"



WALTER AINSWORTH

"Walt"



ROBERT E. ALLCOCK, JR.

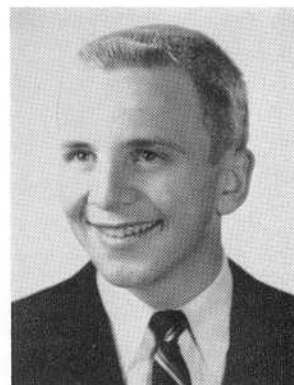
"Bob"

Asst. Bus. Manager Record Book
Traffic Squad 2
Health Councillor 4



RONALD ANDREWS

Speakers' Bureau 3, 4
World History Club 3
Red Cross Council 2, 3



GERALD ROBERT ANGELINI

"Gerry" "Butch"



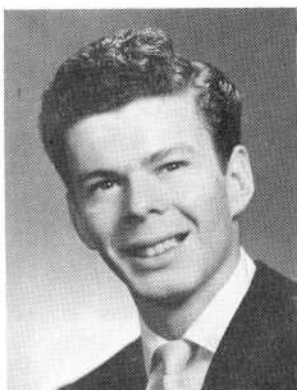
ALBERT RAPOSO ARAUJO

"Al"

Traffic Officer 2
Health Councillor 2
Office Aide 3



PAULINE AREL



ROBERT JOSEPH ARRUDA



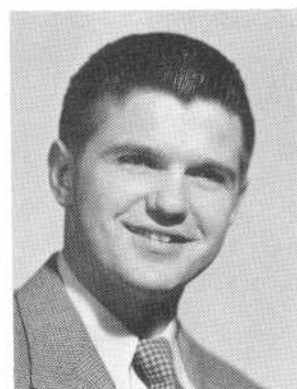
CAROL ANN ASPIN

Girls' Glee Club 2, 3
Basketball Tournament 2
National Honor Society 4



ROBERT FREDDIE ASPLUND

"Fred"



JAMES C. ASTLE

"Jimmy"

Basketball 1, 2, 3, 4
Track 1, 2, 3, 4



LORRAINE THERESA AYASH

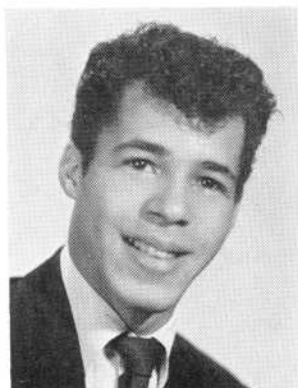
"Lorry"

Literary Club President 4
Dramatic Club 2, 3
Commercial Club 4
Basketball Tourney 2
Senior Girls' Chorus 2, 3, 4

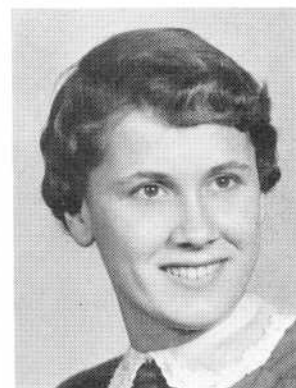


FLORENCE JUNE BAILEY

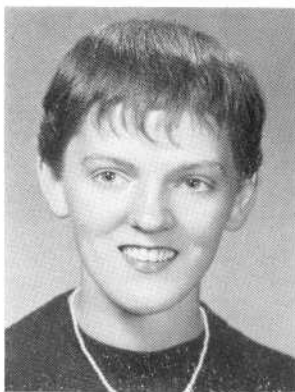
Camera Club 4
Commercial Club 4
National Honor Society 4



RONALD BRUCE BAILEY



MINNA MARY BANVILLE

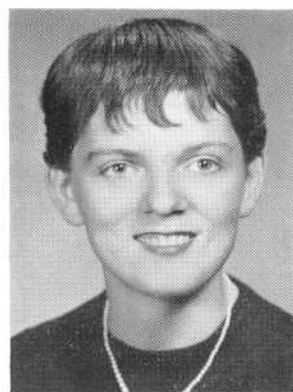


JEAN CYNTHIA BALDYGA

Class Secretary 4
Dramatic Club 2, 3, 4—Secretary 3
Thespians 3, 4
Office Aide 4
Home Room Director 1
Girls' Glee Club 2, 3

JOAN BRENDA BALDYGA

Health Club Vice President 2
Thespians 3, 4
Dramatic Club 2, 3, 4
Prom Committee 3
Glee Club 2, 3
Office Aide 4



CYNTHIA ELLEN BATES

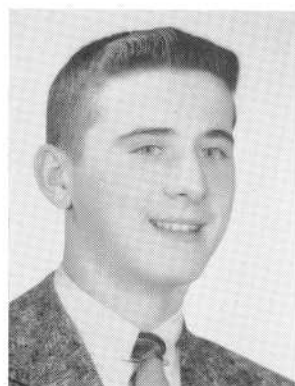
"Cinny"

Cheerleader 3—Head 4
Home Room Director 2, 3, 4
German Club Vice President 3
Red Cross Vice President 3
Basketball Tournament 2

ROGER JOSEPH BEAULIEU

"Spider" "Bannister"

Track 2, 3—Captain 4
Varsity Club 3, 4



WILLIAM ARTHUR BEAULIEU

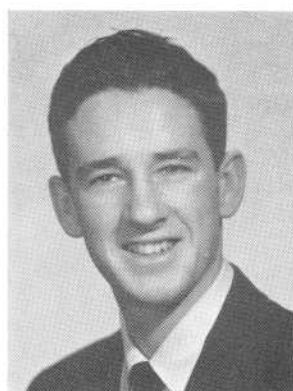
"Billy" "Willy"

Orchestra 1, 2
Science Club 3, 4

WILLIAM THOMAS BENEVIDES

"Benny"

World History Club 3
Home Room Director 1
Baseball 3, 4

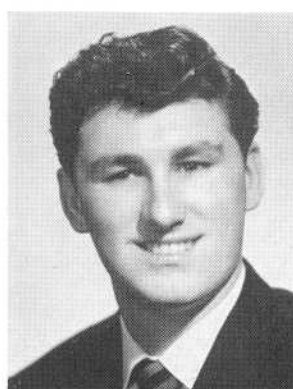


JOHN PAUL BERNAT

"Johnny"

RONALD BERNIER

Glee Club 2, 3
Senior Mixed Chorus 3





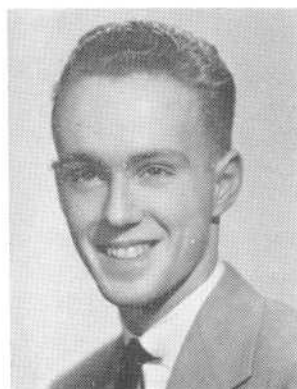
ALVAN G. BERUBE

"Al"

Basketball 1, 2
Traffic Squad 2
Audio-Visual Aide 4



JOSEPH BIGOS

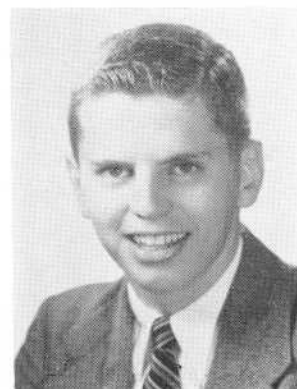


DONALD BILODEAU

ROBERT A. BOGLE

"Bob" "Angel"

National Honor Society 4
Student Council 3, 4
Home Room Director 2, 3, 4
Track 2, 3
Boys' Glee Club 2
Mathematics Club 4



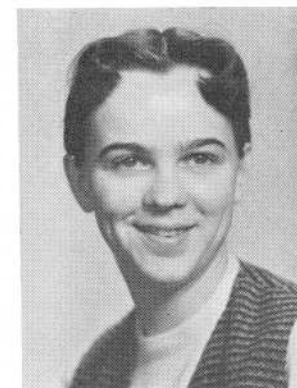
JUDITH ANN BOLEN

"Judy"

Commercial Club 4
Glee Club 2, 3
Cafeteria 3, 4



SHIRLEY GRACE BOOTHROYD



VIOLA REED FRANCES BORDEN

"Vi"

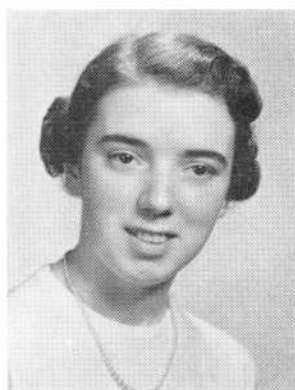
National Honor Society 4
Home Room Director 2
World History Club 4
Camera Club 4

ROBERT BERGE

"Fingers"

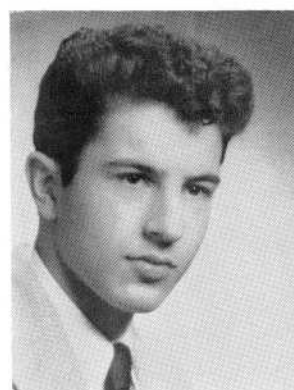
World History Club 3, 4
Mathematics Club 4
Varsity Club 4
Basketball 1—Student Manager 3, 4
Home Room Director 2





ANN MARIE BOTELHO

Commercial Club, 4
Portuguese Club 2, 3, 4



GENE BOTELHO

"Co-Captain"

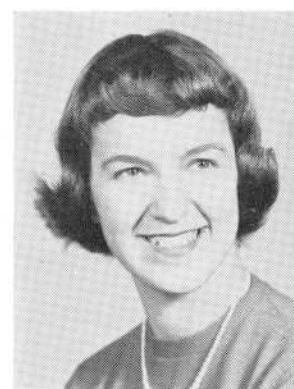
Varsity Club 3, 4
Portuguese Club 2, 3, 4
Football 2, 3, 4
Track 2, 3



MARGARET M. P. BOTELHO

"Margie"

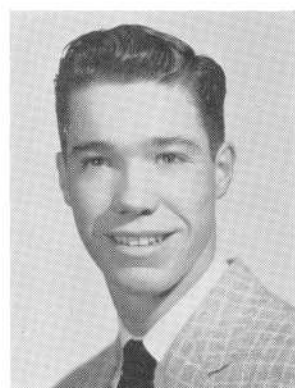
National Honor Society 4
Commercial Club 4
Girls' Glee Club 1, 2
Portuguese Club 4
Home Room Director 2



JOYCE MARIE BOUDREAU

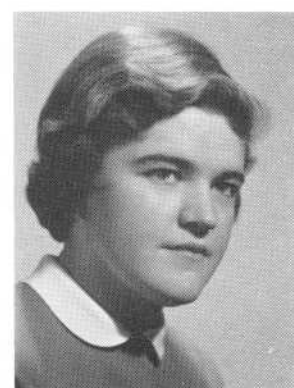
"J.B."

Numeral Club 3
German Club 2, 3, 4
Office Aide 3, 4
Jayvee Basketball 3
Bowling 3
Commercial Club 4



RONALD ROGER BOUSQUET

"Ronnie"



MARY LOUISE BRANEY

"Mary Lou"

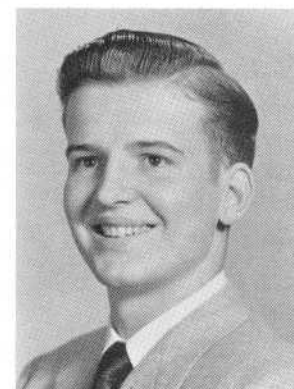
Numeral Club 2, 3, 4
Basketball Tournament 2
Volleyball 3, 4
Bowling 3
Glee Club 2
Gym Leader 3



ROBERT JAMES BOWERS

"Bill", "Jim"

Library Aide 2, 3, 4
Treasurer 3—Committee President 4



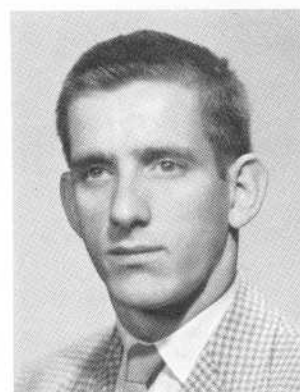
WILLIAM H. BOWERS

"Bill"



DANA MILAN BRAYTON

Speakers' Bureau 4
 Camera Club 2, 3
 World History Club 4
 Hilltop Serenaders 3, 4
 Boys' Glee Club 2, 3, 4
 Senior Mixed Chorus 3, 4



JOHN PAUL BRITLAND

"Jack"

Football 1, 2, 3, 4
 Track 1, 2, 3
 Varsity Club 2, 3, 4—President 4



NORMAN BRODEUR

"Norm"

Traffic Squad 2



JAY OWEN BROWN

"Brownie"

Home Room Director 1, 3
 Baseball 1, 2, 3, 4
 Varsity Club 4
 World History Club 4
 Office Aide 4



PAULINE ELIZABETH BROWN

"Paula"

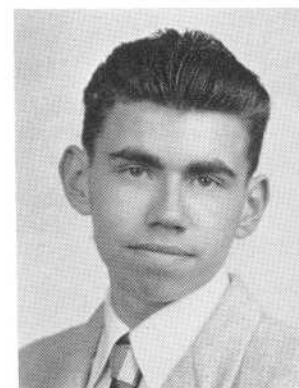
Camera Club 4
 Glee Club 2



FRANCES L. BUBA

"Fran"

Commercial Club 4
 Girls' Glee Club 2, 3
 Basketball Tournament 2



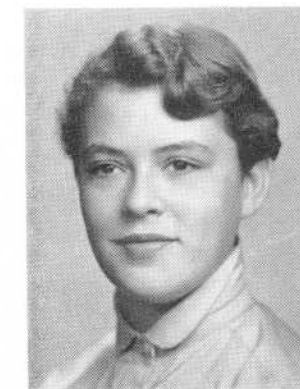
FRANK JAMES CABRAL

"Cisco Kid"

BLANCHE YVONNE CADORET

"Poupoune"

Commercial Club 4
 Senior Mixed Chorus 3, 4
 Senior Girls' Glee Club 2, 3, 4
 Junior Girls' Glee Club 1





CORNELIUS CAHILL
"Neil"
 Home Room Director 2



DELTA P. CAMARA
"Del"
 Portuguese Club 2, 3, 4



CAROL MAY CAMPBELL
 Home Room Director 4
 French Club 4
 Math Club 4
 Girls' Glee Club 2, 3
 Basketball Tournament 2



LOIS DIANE CAREY
"Lo"



ANNE-MARIE CARRIER
"Cashmere"
 National Honor Society 4
 Speakers' Bureau Secretary 4
 Commercial Club 4
 Home Room Director 2
 Health Counselor 3, 4



EVELYN JOAN CASTANHO
"Ted"
 Spanish Club 3, 4
 Girls' Glee Club 2



IDA MARY CATALANO
"Jack"
 World History Club 4
 Camera Club 4

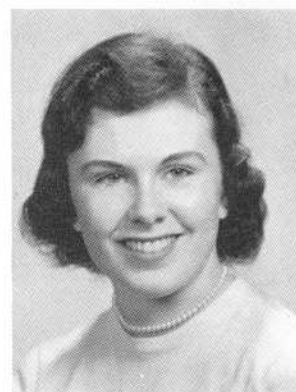


MARY THERESA CAVANAGH
"Cav"
 Junior Girls' Chorus 1
 Senior Girls' Chorus 3, 4
 Senior Mixed Chorus 4
 Sanitation Committee 2



EDITH B. CHACE

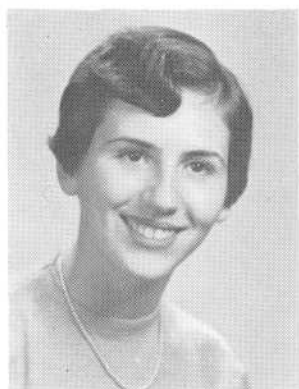
"Chenaw", "Edie"



JOYCE H. CHACE

"Chacey"

Glee Club 2
Commercial Club 4



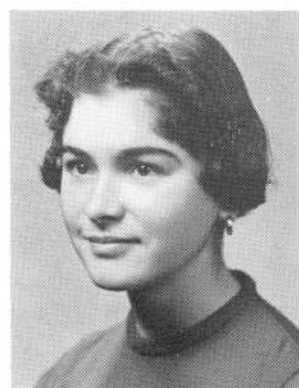
RUTH NAOMI CHARTIER

Commercial Club 4
Office Aide 4

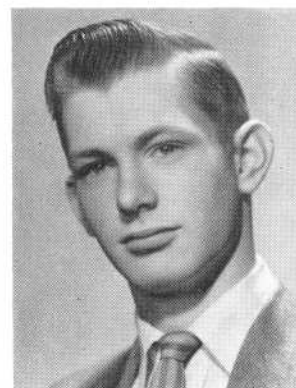


THEODORE JOHN CHITTICK

"Ted"



RITA A. CICCONI



DAVID THOMAS CLARKE

Camera Club 4
Chess Club 4
Math Club 3



LORNA C. COFFEY

"Tea"

Glee Club 2
Home Room Director 3
Commercial Club 4



BARBARA PHYLLIS COHEN

"B.C.", "Bobbi"

Science Club 2, 3, 4
Math Club 3, 4
Dramatic Club 2, 3
Literary Club 4
Camera Club 2, 3
Senior Mixed Chorus 4



HARVEY COHEN

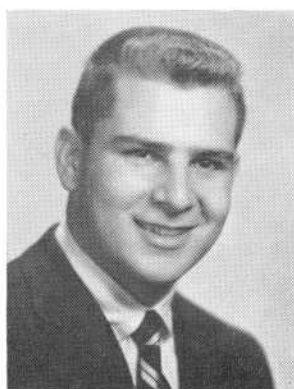
Science Club 3, 4
National Honor Society 4
French Club 4
Orchestra 2



SUSAN JANE COHEN

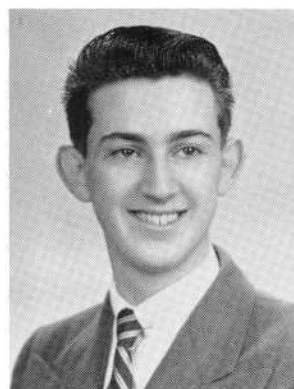
"Susie"

Cheerleader 3, 4
World History Club 4



EDWARD HENRY COLLURA

"Eddy"



FRANK CONNORS

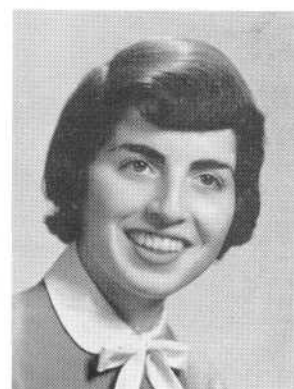
Dramatic Club 2, 3
Track 3
Home Room Director 2



CAROLYN E. COOK

"Cookie"

Office Aide 4



LOIS ANN CORNELL

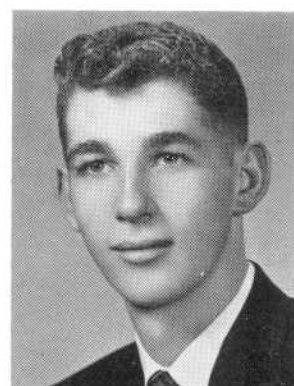
National Honor Society 3, 4
World History Club 4
Thespian Society 3, 4
Dramatic Club 2, 3, 4
German Club 2, 3, 4
Speakers' Bureau 4



LORRAINE CORREIA

"Lorry"

Commercial Club 4
Office Aide 4
Glee Club 2
Basketball 2



RICHARD CORRELLAS

Varsity Club 4
Basketball 4
Portuguese Club 2, 3, 4

**BEVERLY DOROTHY COSTA***"Hubcap", "Bev"*

National Honor Society 3, 4
 Vice President, S.A.A. 3
 Secretary, S.A.A. 2
 Student Council 2, 3
 Hilltop Staff 4
 Home Room Director 2, 3

EVELYN COSTA*"Ev"*

Portuguese Club 3, 4; Secretary 3
 Senior Girls' Glee Club 2
 Junior Girls' Glee Club 1
 Basketball Tournament 2

**FRANCES COSTA***"Fran", "Franny"*

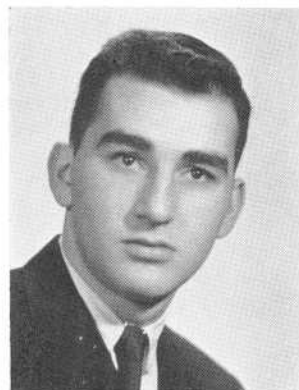
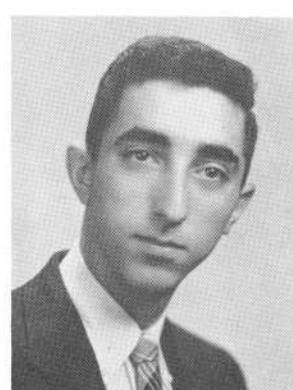
Office Aide 4
 Commercial Club 4
 Health Councillor 2
 Portuguese Club 2, 3, 4
 Glee Club 1, 2

MARY LOUISE COSTA*"Toots"*

Commercial Club 4

**ELEANOR MARIE COSTAR**

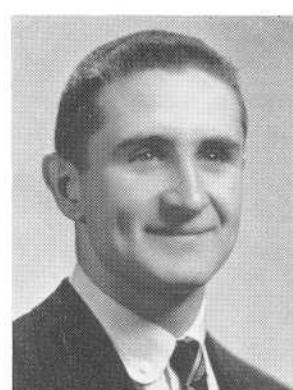
Glee Club 2
 Commercial Club 4

DANIEL F. COUTE**GEORGE CHARLES COUTROUBIS**

Science Club 3, 4
 Math Club 4
 World History Club 4
 Chess Club Vice-President 4
 Boys' Glee Club 2
 Senior Mixed Chorus 2

ROBERT PHILIP CRAWFORD*"Togo"*

Baseball 2, 3, 4
 Football 3, 4
 Varsity Club 4
 Class Secretary 2
 Record Book Sports Editor 4





JOHN FRANCIS CRONIN

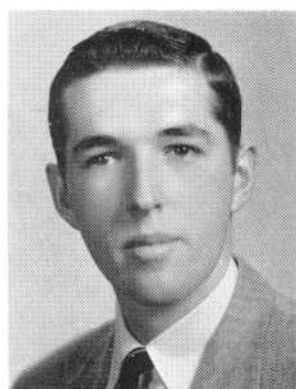
"Crowbar", "J.C."

Football 2, 3, 4
Basketball 1, 2
Track 2, 3, 4
Varsity Club 3, 4



MARIE CHARLOTTE CROSS

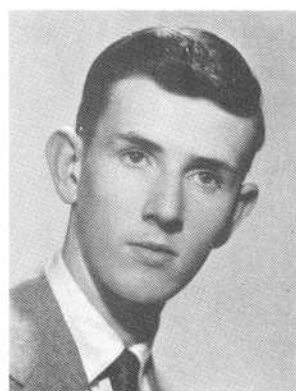
"Lottie"



RICHARD CROWELL

IDA LOUISE CUNHA

Portuguese Club 2, 3, 4
Music Appreciation Club 3, 4
Basketball Tournament 2
Junior Girls' Glee Club 1, 2
Senior Girls' Glee Club 3



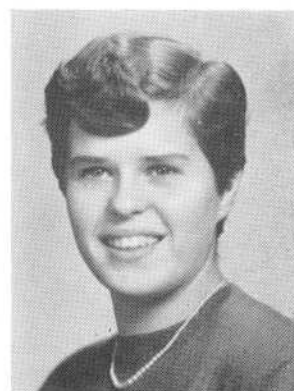
JOHN ANTHONY CURRY

Track 3, 4
Varsity Club 4

JUDITH ANN DAVIS

"Judy"

Commercial Club 4
Basketball Tournament 2
Senior Girls' Glee Club 2
Junior Girls' Glee Club 1
Cafeteria 3



KATHLEEN ANN DEAN

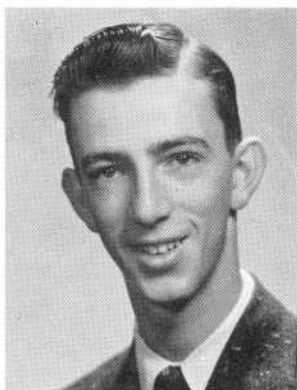
"Kay"

JOAN FRANCES DELANEY

"Jay"

Cheerleader 3, 4
Home Room Director 2
Basketball Tournament 2
Cafeteria 2, 3





DONALD THOMAS DE MARCO

"Don"



ROBERT FRANCIS DEPIN

"Doctor"



LAURETTA DESCHENES

"Lorry"

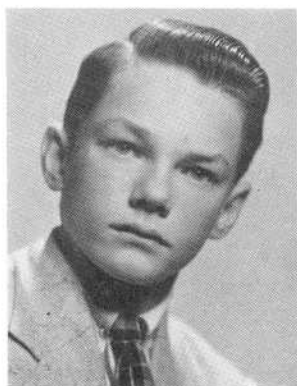
Girls' Glee Club 2
Commercial Club 4
National Honor Society 4



MAUREEN JEANNETTE DICKINSON

"Moe"

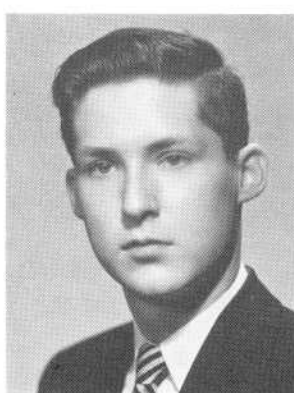
National Honor Society 4
Majorette 3, 4
President of Health Club 2
Vice President of Class 3, 4
Prom Committee 3



WILLIAM E. DISKIN

"Bill"

Band 2, 3, 4
Orchestra 2
Brass Ensemble 2, 3
Dramatic Club 4



DAVID GEORGE DIXON

National Honor Society 3, 4
Orchestra 2, 3, 4
Debating Team 2, 3, 4
Harvard Prize Book 3
Speakers' Bureau 4
Health Club, Councillor 2



GRACE CATHERINE DOBSON

"Gracie"

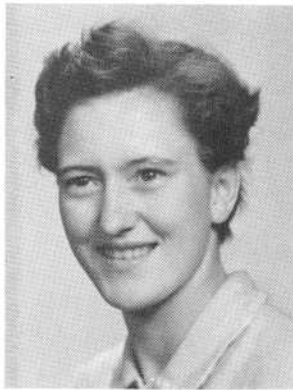
Majorette 2, 3, 4
Head Majorette 4
Jay Vees 3
Basketball Tournament 2
Commercial Club 4
Health Councillor 3



GERALDINE M. DOLINSKY

"Gerrie"

World History Club 4
Spanish Club 3, 4
Basketball 2



GWENDOLYN GRACE DONALD

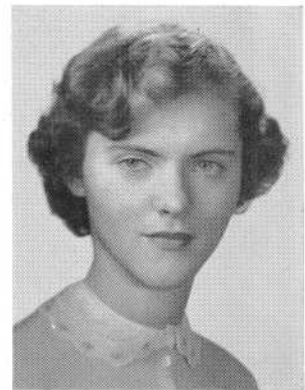
"Gwen", "Mc"

Band 2, 3, 4
Orchestra 2, 3, 4
Music Appreciation 3, 4
Brass Ensemble 3
Theater Ensemble 4

PATRICIA CATHERINE DONNELLY

"Pat"

National Honor Society 3, 4
All State Orchestra 2, 3
Orchestra, Asst. Librarian 2, 3, 4
Band, Asst. Bus. Manager 2, 3, 4
Music Appreciation Club 3, 4



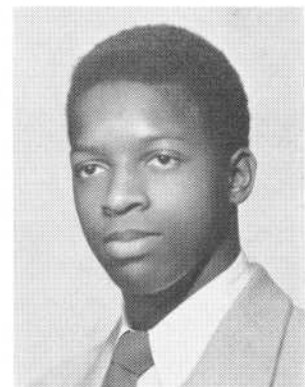
MARY LOU DOYLE

Girls' Numeral Club 2, 3, 4
Audio-Visual Aide 2
Office Aide 4
Volleyball 2, 3, 4
Basketball 2
Gym Leader 3

FREDERICK A. DRAYTON

"Rock"

Football 2, 3, 4
Basketball 2
Track 2, 3, 4
Reagan Memorial Award 4
Hilltop Sports Editor 4
Record Book Asst. Editor 4



JOAN M. DREWNIAK

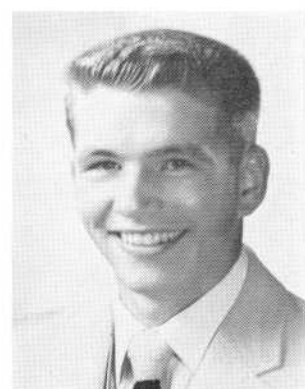
"Jo", "Joannie"

National Honor Society 3, 4
Girl Councillor 2, 3, 4
Student Council 2, 3, 4
Hilltop Staff 4
Home Room Director 3, 4
Girls' Glee Club 2, 3

STANLEY WALTER DREWNIAK

"Stan the Man", "Starsh"

National Honor Society 4
Home Room Directors, Pres. 3, 4
Varsity Club 2, 3, 4
Vice President 4
Football 4
Basketball 3, 4

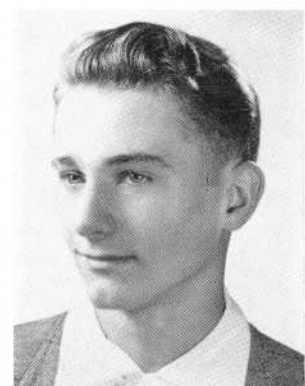


CAROLYN ANNE DRISCOLL

"Dris", "Cass"

Science Club 3, 4
Spanish Club 3
World History Club 4
Office Aide 4
Glee Club 1, 2
Basketball 2

RICHARD JOSEPH DUBE

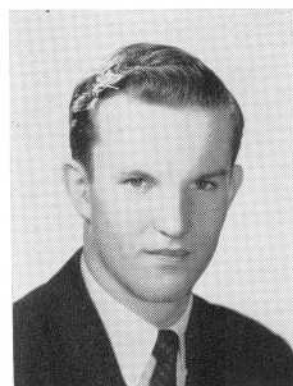




HAROLD LOUIS DUBOVICK

"Harry", "Hal"

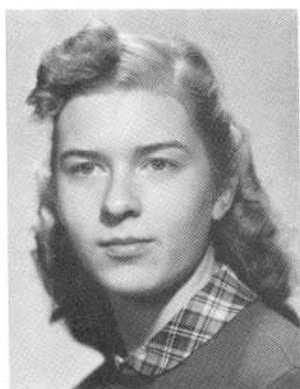
Boys' Glee Club 2
Senior Mixed Chorus 2
Intramural Basketball 2



G. RICHARD DUFFY

"Duff"

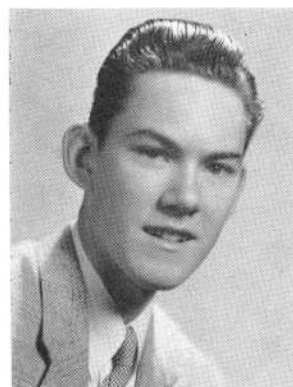
World History Club 3, 4
President 4
Varsity Club 3, 4
Basketball 3, 4
Baseball 3, 4



WINIFRED ANN DURFEE

"Winnie"

National Honor Society 3, 4
Orchestra 2, 3, 4
Librarian of Orchestra 4
All-State Orchestra 2, 3, 4
Mathematic Club 2, 3, 4
Speakers' Bureau 4



WALTER THOMAS DZIALO



MARGARET ANN ELIAS

"Peggy"

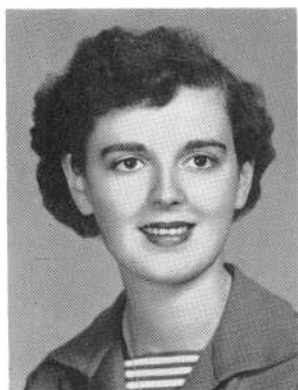
Commercial Club 4
Health Councillor 3, 4
Senior Mixed Chorus 3, 4
Girls' Glee Club 1, 2, 3, 4
Camera Club 1



MARILYN HOPE ELLIS

"Mal", "Sis"

Orchestra 1, 2, 3, 4
Co-Concert Mistress 4
Majorette 3, 4
J.V. Basketball 3
Theater Ensemble 2, 3, 4



PATRICIA ESTRELLA

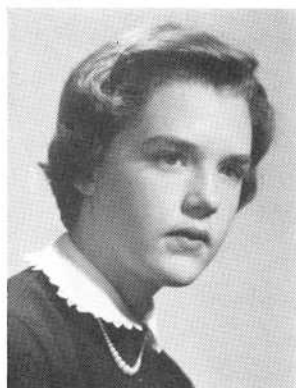
"Pat"

Science Club 4
Commercial Club 4
Camera Club 3



RICHARD CHARLES EVANS

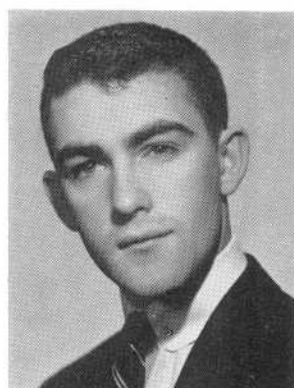
"Dick"



BRENDA KAY EYERDAM

DONALD FAHEY

Track 1, 2, 3
Varsity Club 3, 4



JUDITH MARIE FARIAS

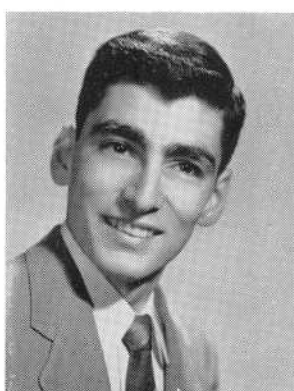
"Judy"

Band 1, 2, 3, 4
Numeral Club 3, 4
Vice President 4
Varsity Basketball 3, 4
Portuguese Club 2, 3, 4
Gym Leader 3, 4

GERALD ANTHONY FARIS

"Jerry"

Science Club 3, 4
Chess Club 4
Chess Club 4
Home Room Director 4

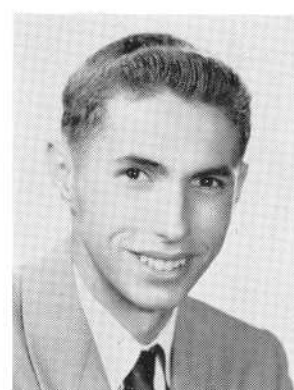


PAUL KENNETH FELDMAN

Science Club 3, 4
Mathematics Club 4
Camera Club 2, 3, 4
World History Club 4
Chess Club 4
Home Room Director 2

ANTHONY FERRAZ

Chess Club 4
Track 2, 3, 4
Football 4



GERTRUDE FERREIRA

"Trudy" "Gert"

Manager Varsity Basketball 4
Numeral Club 3, 4
Bowling Captain 3, 4
Volleyball 2, 3, 4
Portuguese Club 2

MARY VERONICA FERREIRA

"Ronnie"

Speakers Bureau 4
Commercial Club 4
Bank Cashier 2, 3, 4
Girls Numeral Club 2, 3, 4
Home Room Director 2, 3





PATRICIA ANN FITZGERALD

"Fitzy" "Pat"

Commercial Club 4
Girls' Numeral Club 3, 4
Bowling 3
Basketball Tournament 2
Volleyball 2, 3
Gym Leader 4



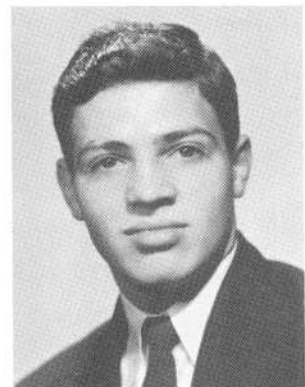
DONNA JANET FITZ-GIBBONS

"Fitzy" "Fitz"



JEANNETTE FOLEY

Senior Girls' Glee Club 2, 3, 4
Junior Girls' Glee Club 1
Basketball Tournament 2



ANTONIO T. FONSECA



GEORGETTE SIMONNE FORTIN

"Georgie"



JOAN C. FOX

"Foxie"

Girls' Glee Club 1, 2
Basketball Tourney 2
Cafeteria 3, 4
Portuguese Club 2



CAROLYN ANN FRAIN

"Sis"

National Honor Society 3, 4
Class Secretary 1, 3
Home Room Director 2, 4
Commercial Club 4
Mathematics Club 2, 4
Prom Committee 3



YVETTE ANN FRECHETTE

French Club 2, 3, 4
Music Appreciation Club 3, 4



JACQUELINE FAITH FREITAS

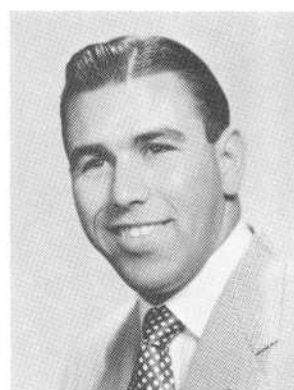
"Jackie"

National Honor Society 4
Band 1, 2, 3, 4
Librarian 4
Asst. Bus. Mgr., Record Book 4
Numeral Club 2, 3, 4
Varsity Basketball 3, 4

MANUEL FURTADO, JR.

"Mickey"

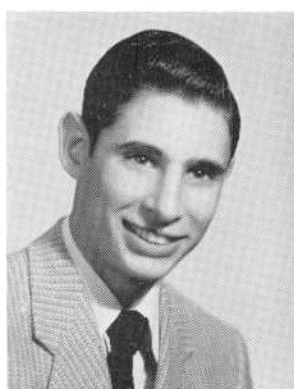
Portuguese Club 2, 3
Cafeteria 2, 3, 4



GLORIA GAGNON

French Club 4
Vice-President 4
Office Aide 4
Basketball Tournament 2

PAUL L. GAGNON



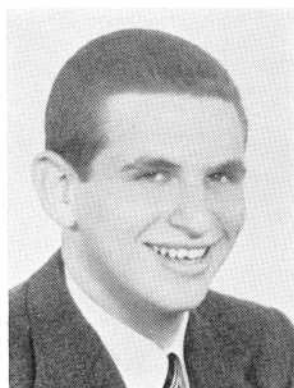
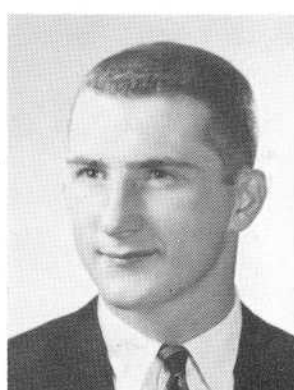
LILLIAN M. GEAGON

"Lil"

CHARLES HARDING GESNER

"Chick"

Speakers' Bureau, Pres. 4
SAA Councillor 2
Mathematics Club 3, 4
Varsity Club 2, 3, 4
Football (Captain 4) 1, 2, 3, 4
Baseball 1, 2, 3, 4

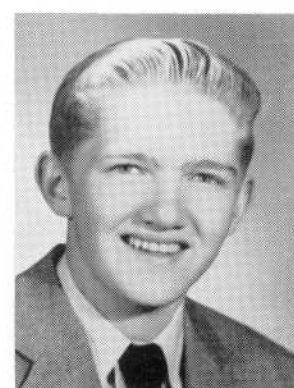


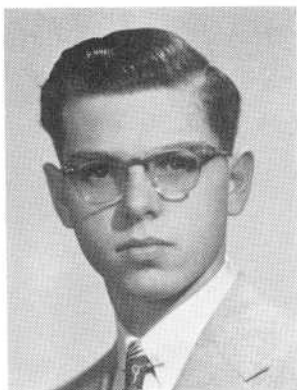
MICHAEL A. GINSBERG

National Honor Society 3, 4
Secretary 4
Science Club 3, 4
Secretary 4
Mathematics Club 3, 4
Audio Visual Aides 2, 3, 4

ANDREW COLLINS GOLDEN

"Andy"





HARRY BREWSTER GOLDING

"Tip"

Home Room Director 3



ANN S. GOLEMBEWSKI

National Honor Society 3, 4

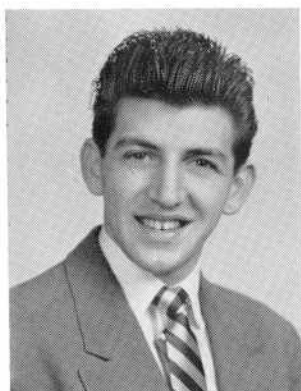
Vice President 4

Camera Club 2, 3, 4

Dramatic Club 2, 3, 4

Mathematics Club 2, 4

Speakers' Bureau 4



RICHARD JOSEPH GOSSELIN

"Goose"



JAMES GOW

"Jim"

Home Room Director 2

German Club 3



GERALDINE GRACIA

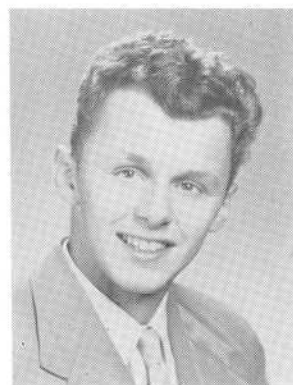
"Gerry" "Gerr"

Commercial Club 4

Portuguese Club 2, 3, 4

Girls' Glee Club 2

Basketball 2



DONALD THEODORE GREENSLADE

"Don"



JANET GREENWOOD

"Jan"

Majorette 3, 4

Commercial Club 4

Girls' Glee Club 2

Basketball 2



EILEEN TERESA GRIFFIN

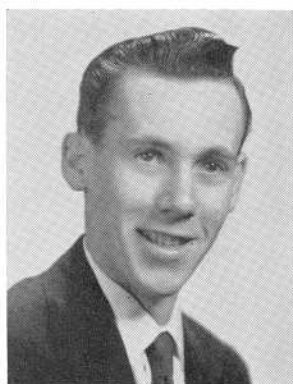
Hilltop Business Manager 4

Dramatic Club 2, 3, 4

Girls' Glee Club 2

Thespians 4

Basketball 2



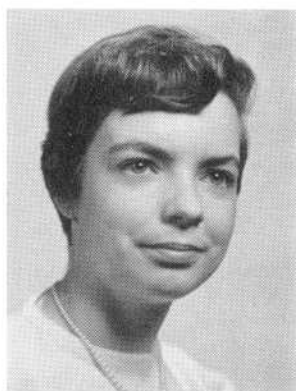
CHARLES GOODWIN GROW

"Bud" "Chuck"



JEAN VALARIE GRZELKA

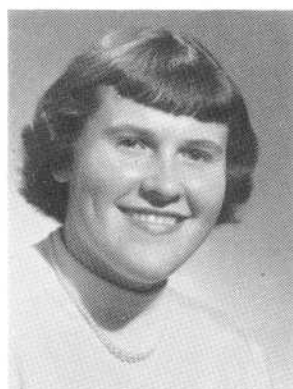
"Jeanie" Grizzly"



JANET VIRGINIA GUILMETTE

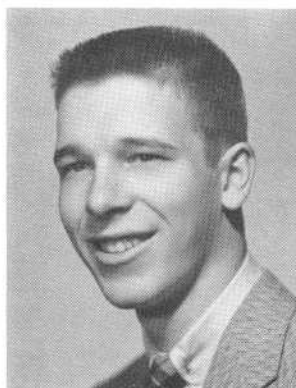
"Jan"

Health Councillor 4
Volleyball 4
Badminton 4



PAULINE GUTTER

Portuguese Club 2, 3, 4
Basketball 2
Office Aide 4



NORMAN E. HANSCOM

Hilltop Serenaders 2, 3, 4
Boys' Glee Club 2, 3
Senior Mixed Choir 2, 3



GERTRUDE ROSE HARGRAVES



MILDRED LEE HARRIS

National Honor Society 3, 4
Girls' Numeral Club 2
J.V. Basketball 2
Softball 1, 2
Girls' Glee Club 2



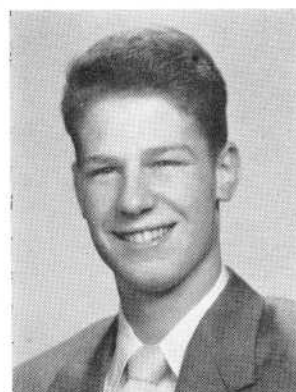
NANCY JOAN HARTLEY

"Nan"

Dramatic Club 3, 4
Thespians—President 4
Science Club 3, 4
Home Room Director 3
Glee Club 2
Girls' Basketball 2

**JOHN JOSEPH HATHAWAY**

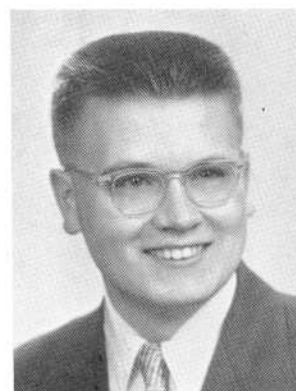
Class President 1, 2, 3, 4
 Student Council 1, 2, 3, 4
 Home Room Director 2, 3, 4
 Basketball 1, 2, 4
 Varsity Club 4
 Speakers' Bureau 4

**JAMES BRANDON HEALEY****DOROTHY HENAIRE***"Dot"*

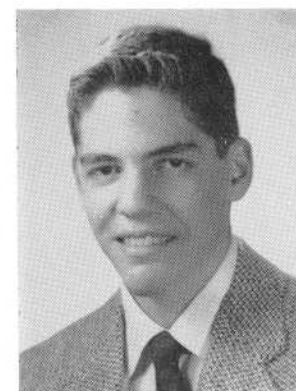
Commercial Club 4
 World History Club 4
 Senior Mixed Chorus 3, 4
 Senior Girls' Glee Club 2, 3, 4

**MARGARET T. HENRY***"Peggy" "Peg"*

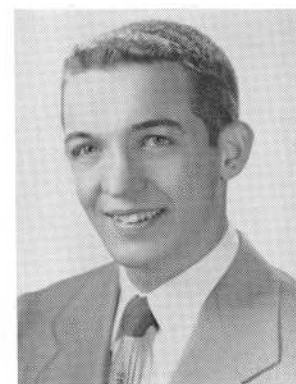
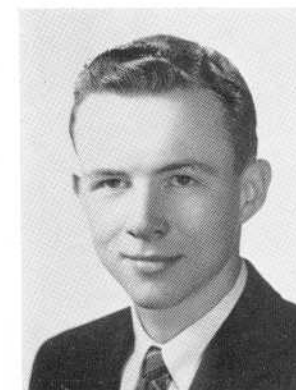
German Club 2, 3
 Secretary 3
 Girls Numeral Club 2, 3
 Gym Leader 3
 Basketball Tournament 2

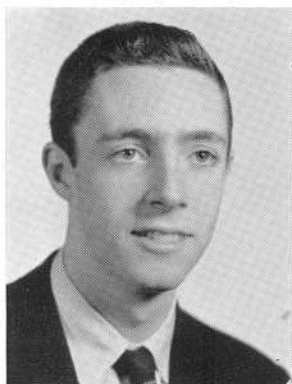
**GARDNER WORDELL HICKS**

National Honor Society 3, 4
 Vice President, Science Club 3, 4
 Science Club 3, 4
 Math Club 3, 4
 Chess Club 4
 Camera Club 3, 4

**ROBERT ELIOT HILLMAN**

Dramatic Club 2, 3, 4
 Speakers' Bureau 4
 National Honor Society 3, 4
 Spanish Club 3, 4
 Basketball 3
 Thespian Society 4

**HENRY EUGENE HOLIK***"Hank"***ROBERT A. HOOLE**



JOHN THOMAS HURLEY

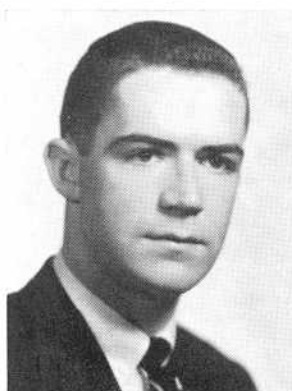
"Judge"

National Honor Society 4
Track 2, 3, 4
Varsity Club 4
Record Book, Asst. Editor 4
Football 4

PRISCILLA HURLEY

"Prissy" "Blue Eyes" "P. T."

Hilltop Staff 4
Dramatic Club 2
Junior Girls Glee Club 2
Senior Girls Glee Club 3
Softball 3



DONALD FRANCIS HYLAND

"Butch"

RUSSELL JACKSON

"Jack"



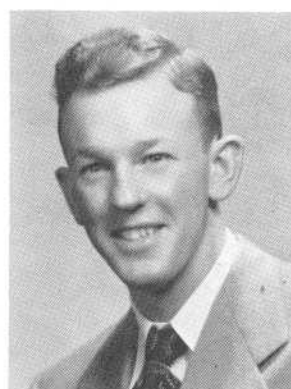
BARBARA ANN JARDIN

"Barbie"

Glee Club 2, 3, 4
Literary Club 4
Basketball Tournamet 2
Home Room Director 2
Dramatic Club 3, 4

GARY EDWARD JENNINGS

"Gar"



ROBERT L. JONCAS

"Bob" "Tish"

MARLENE JUNE JOHNSON

"Marl" "Molly"

Junior Girls' Glee Club 1
Senior Girls' Glee Club 2
Mathematics Club 2, 3, 4
Dramatic Club 4
Office Aide 3, 4
Basketball Tourney 2





ROBERT L. JOUBERT

"Bob"

Home Room Director 2



CHRISTINE ANNE KALESKI

"Tina"

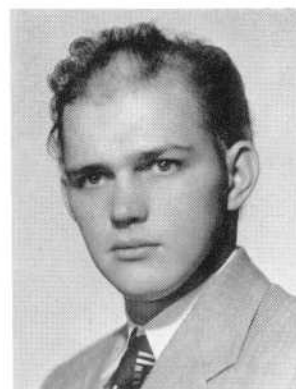
French Club 4

Literary Club 4

Commercial Club 4



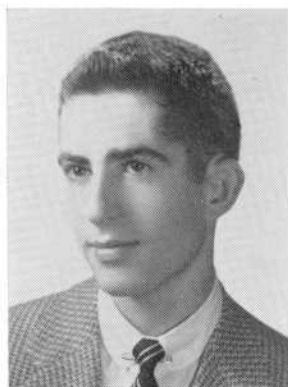
LOUISE M. KALIF



SYLVESTER L. KAMINSKI

Health Councillor 4

National Honor Society 4



JOEL STEPHEN KANE

National Honor Society 4

Math Club 2, 3, 4

Spanish Club 3, 4

Varsity Club 3, 4

Tennis Team 2, 3, 4

Dramatic Club 2



RHODA KAPLAN

"Rho"

National Honor Society 4

Cheerleader 3, 4

Record Book Typist 4

Dramatic Club 2, 3, 4

Science Club 3, 4

French Club 3, 4



CYNTHIA DALE KAY

"Cynth"

National Honor Society 4

Numerical Club 2, 3 President 4

Health Club Secretary 2

Basketball 4

Badminton 2, 3, 4

Softball 3

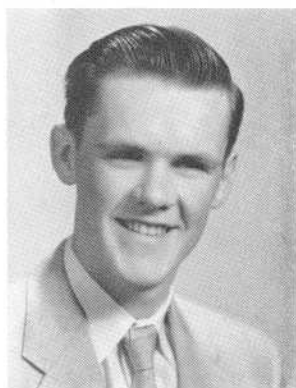


ELIZABETH ANN KEANE

"Beth"

Commercial Club 4

Basketball 2



THOMAS JOSEPH KEHOE



BRUCE MELVIN KERSHAW



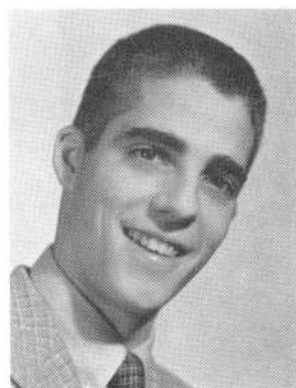
BARBARA NANCY KELLEY

"Barb" "Twin"
Girls' Glee Club 2
Home Room Director 4

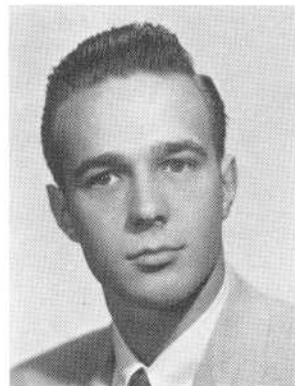


PAULINE WISE KELLEY

"Paul" "Twin"
Health Councillor 2
Bank Cashier 3
Girls' Glee Club 2

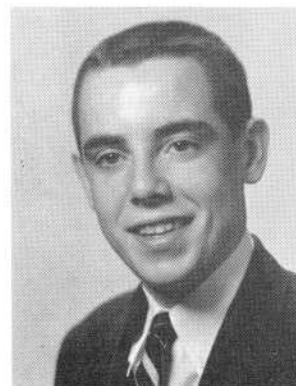


GLEN EDWARD KERSHAW

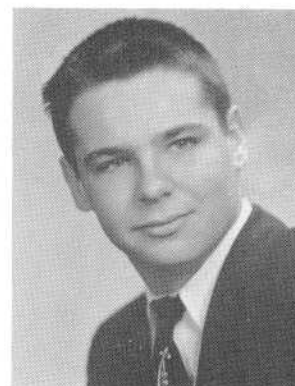


ROBERT MICHAEL KESHURA

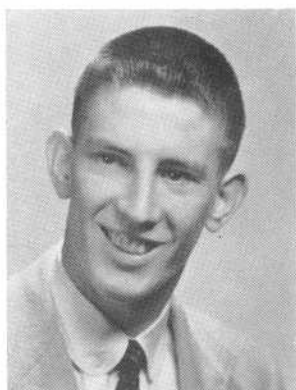
"Bob"



RAYMOND J. KIELY, JR.



LAWRENCE E. KITCHEN, JR.



DONALD LEON KLIMKA

"Don"

Varsity Club 3, 4
Varsity Club 3, 4
Basketball 3, 4
Football 3, 4
Track 2 3, 4



GEORGE ROBERT KOCH



PAULINE M. KOTLARSKI

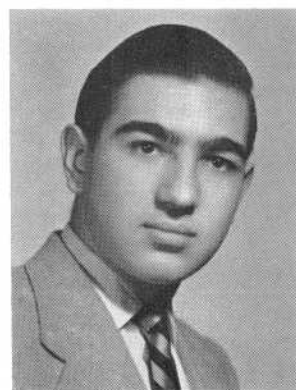
"Paula"

Basketball 2
Girls' Glee Club 2
Home Room Director 2
Sr. Girls' Chorus 3



RHODA KRASNOW

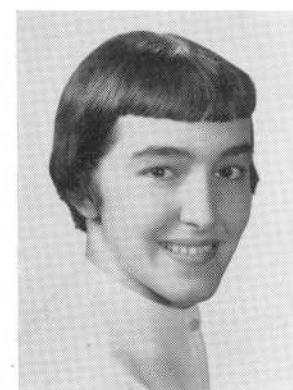
Hilltop Staff 4
Spanish Club 3, 4
National Honor Society 4



THEOPHILOS KULIOPULOS

"Theo"

National Honor Society 4
Chess Club President 4
Science Club 3, 4
Mathematics Club 3, 4
Camera Club 2, 4
Speakers Bureau 4



JANET LAMBERT

"Jan"

Jr. Girls' Glee Club 1
Sr. Girls' Glee Club 2, 3
Office Aide 4
Literary Club 4



HELEN MARIE LAUREANNO

National Honor Society 4
Commercial Club 4
Camera Club 3
Portuguese Club 2
Basketball 2
Glee Club 2



GERALD J. LAWTON



VERNA ANN LAWTON

"Irish"

Home Room Director 4
Hilltop Staff 4
Girls' Glee Club 1, 2



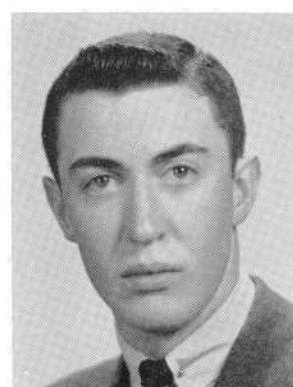
CORNELIUS VINCENT LEAHEY



PAUL WILLIAM LECOUR

HAROLD JAMES LEIGH

Home Room Director 3, 4
German Club 2, 3, 4
Science Club 3
World History Club 3, 4



JAMES LEONARDO

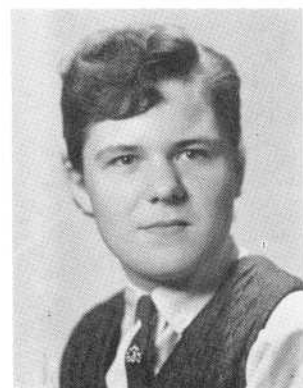
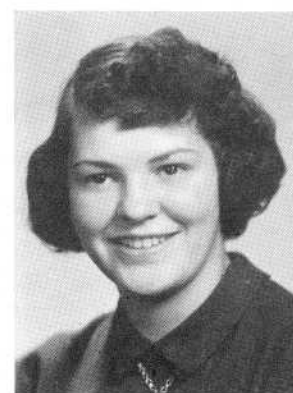
"Jimmy"

Camera Club 3
Health Councillor 4

JEANNETTE CECILE LESCAULT

"Jan" "Miss 'Let's Go'"

Camera Club 3
Commercial Club 4
Music Appreciation Club 4
Basketball Tournament 2



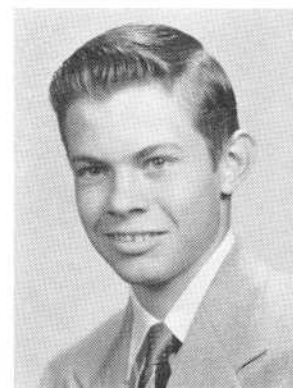
MURIEL A. LEVESQUE

Office Aide 3, 4
Basketball Tournament 2
National Honor Society 4

OSCAR JOSEPH LEVESQUE

"Buzz"

Track 2, 3, 4
Varsity Club 4

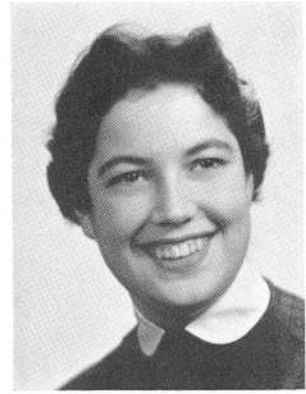




VIRGINIA JUNE LEVESQUE

"Ginny" "Ginger"

Basketball 2
Girls Glee Club 2, 3
Senior Mixed Chorus 3, 4
Spanish Club 3



EUNICE M. LIMA

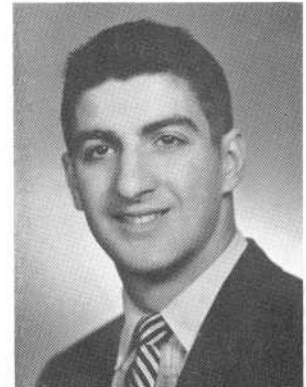
"Eunnie" "Beanie"

Portuguese Club 1, 2, 3
Girls' Glee Club 1
Office Aide 1, 2



JOAN MARIE LINHARES

Commercial Club 4
Secretary-Treasurer 4



JOHN LITOS

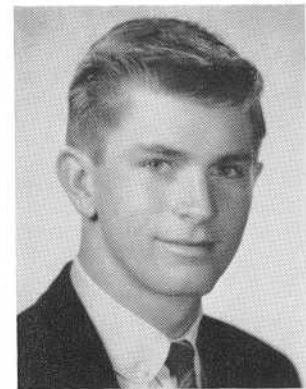
"Greek"

Home Room Director 1
Football 2, 3, 4
Basketball 2, 3, 4
Tennis 2
Varsity Club 4
World History Club 3, 4



ALICE MARIE LONG

Girls' Glee Club 2, 3, 4
Sr. Mixed Chorus 3, 4



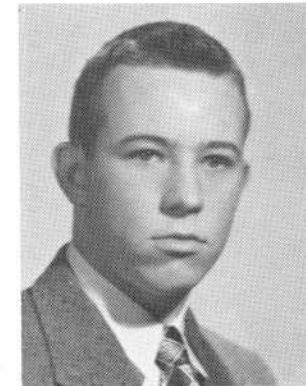
RAYMOND LONGSHAW, JR.



JOSEPH LOUIS LOVIT

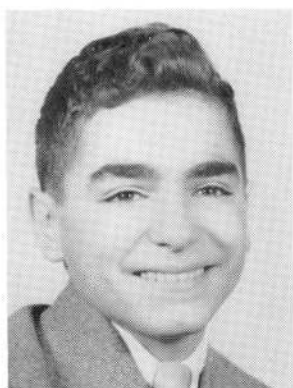
"Joe"

Spanish Club Secretary 3
Camera Club 2, 3
Mathematics Club 3, 4
Tennis 2, 4
Basketball 2



DANIEL FRANCIS LYNCH

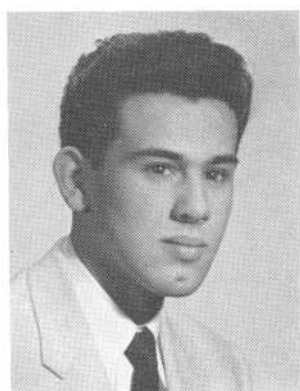
"Lynch"



DAVID JOSEPH MACHADO



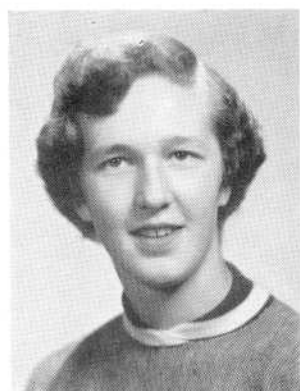
DOUGLAS JOHN MACHADO
Health Councillor 2



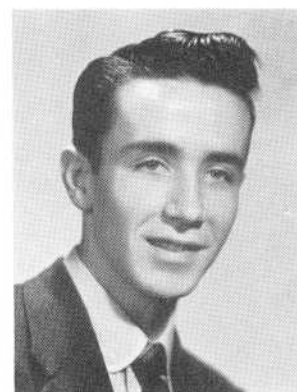
JOSEPH MACHADO
"Joe"
Home Rom Director 2



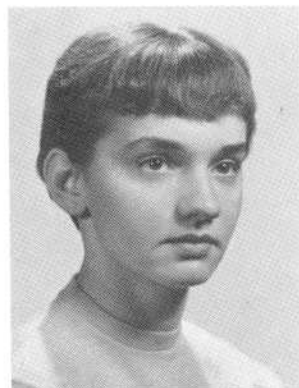
EDWARD MAJEWSKI



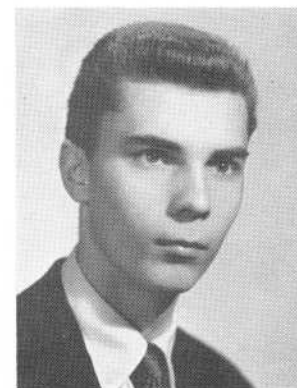
BARBARA JANE MAKUCH
"Barb" "Barby"
Basketball 2, 3, 4
Captain 4
Numeral Club 2, 3, 4
Bowling 3, 4
Volleyball 3, 4
Captain 4



FRANKLIN BERNARD MANNING
"Frankie"



JOAN MARCILLE
Camera Club 3
Junior Girls' Glee Club 2



ROLAND DONALD MARCOUX



LOUISE IRENE MASSE

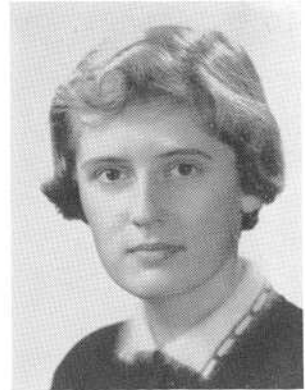
"Lou" "Mass"

Girls' Glee Club 1
Basketball Tourney 2
Volleyball Tourney 2

JANET ANN-MARIE MASSON

"Jan"

Hilltop Staff 4
Junior Red Cross Treasurer 4
Home Room Director 3, 4
Office Aide 4
Camera Club 2
Junior Girls' Glee Club 1



JACQUELINE ANN MASSOUD

"Jackie"

National Honor Society 3, 4
Home Room Director 1, 2
Mathematics Club 2, 4
Health Councillor 4
Senior Girls' Glee Club 4
Camera Club 2

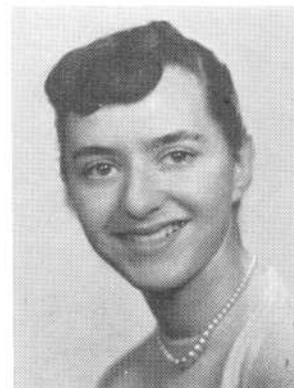
CLAUDETTE ANN MATHIAS

Commercial Club 4
Office Aide 4
Senior Mixed Chorus 3
Senior Girls' Glee Club 2, 3
Ensemble 3
Junior Girls' Glee Club 1



GUSTAVE V. MATTOS, JR.

JOAN LILLIAN MAYO



ELAINE McCARTHY

Commercial Club 4
Junior Girls' Chorus 2
National Honor Society 4

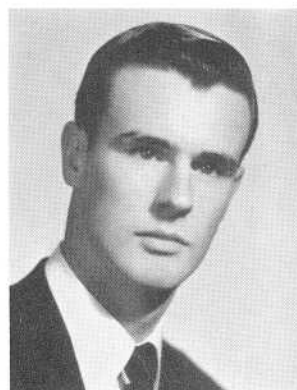
SUSAN MARY McDONALD





RAYMOND McGOUGH

Track
Football



WILLIAM RICHARD McGRADY



JACQUELYN McKay

"Jackie"

Girls' Glee Club 1
Senior Girls' Glee Club 2, 3, 4
Senior Mixed Chorus 3, 4
Silvertones 4



EVELYN MAY McMAHON

"Lyn"



LAWRENCE JAMES MEDEIROS

"Larry"

Portuguese Club 1, 2, 3



PAULINE ANN MEDEIROS

Commercial Club President 4
National Honor Society 3, 4
Record Book Typist 4
Health Councillor 4
Office Aide 2, 3, 4

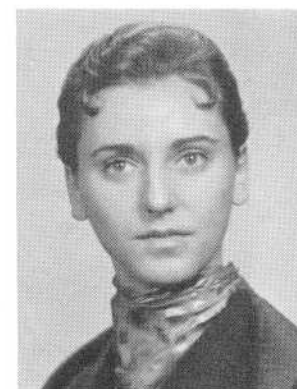


DAVID MELLO

LORRAINE C. MELLO

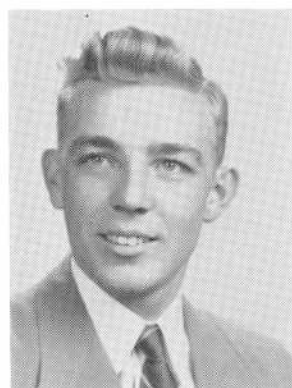
"Lorry"

Office Aide 3
Portuguese Club 2, 3, 4
Secretary 2
Commercial Club 4
Glee Club 2
Basketball 2





PATRICIA A. MELLO



EDWARD LEONARD MERSEY



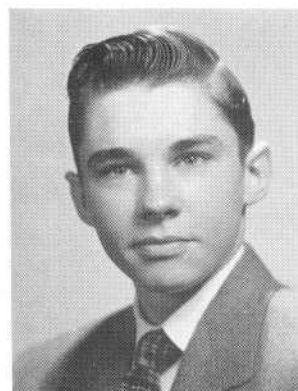
FRANKLIN F. MESSIER

"Mess"



ANITA L. MEYERSON

Home Room Director 2, 3, 4
Commercial Club 4
Office Aide 4
Stock Room 3
National Honor Society 4

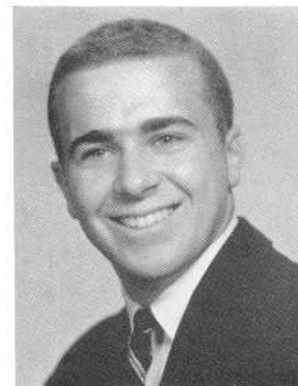


NORMAN FRANCIS MICHAUD

"Mich"



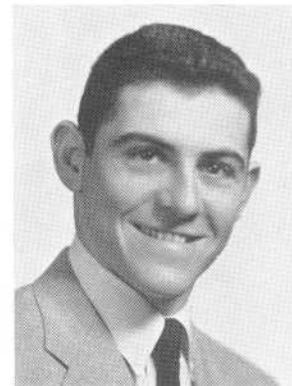
DOROTHY DILWORTH MILLER



GEORGE MILLER

"Curly" "Mill"

National Honor Society 3, 4
President 4
Student Council 4
Basketball 2, 3, 4
Baseball 2, 3, 4
Varsity Club 3, 4



HAROLD ROGER MILLER



HOWARD M. MILLER

"Howie" "Mill"

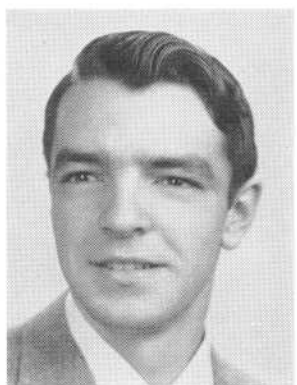
Football 2, 3, 4
Varsity Club 4
Mathematics Club 4
Tennis 2, 3, 4



ALICE JANE MONAHAN

"Al"

Camera Club 4



CHARLES VIEIRA MONIZ

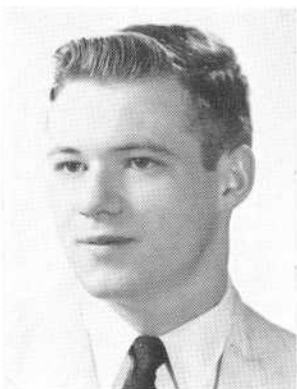
"Chuck"



NANCY JUNE MONIZ

"Nan"

Portuguese Club 2



JOHN D. MOORE

Dramatic Club 2, 3, 4
President 4
National Thespian Society 3, 4
National Honor Society 3, 4
Speakers Bureau 4
Science Club 4



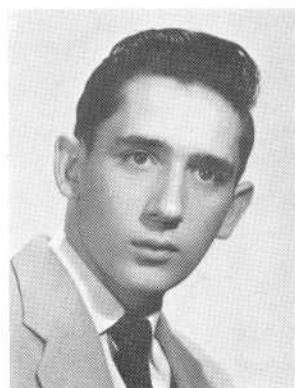
PAULINE MORIN

"Red" "Paul"

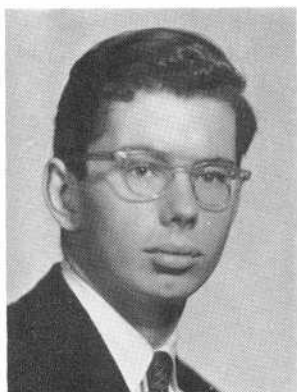
National Honor Society 4
Music Appreciation Pres. 3, 4
Vice-President-Treas. 2
Orchestra, Co-Concert Mistress 2, 3, 4
Basketball Tournament 2
Commercial Club 4



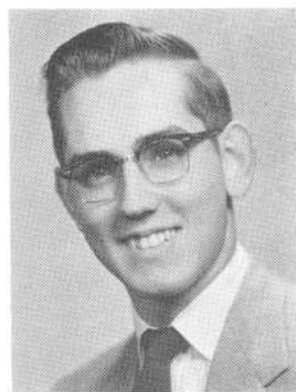
ANNE MOSER



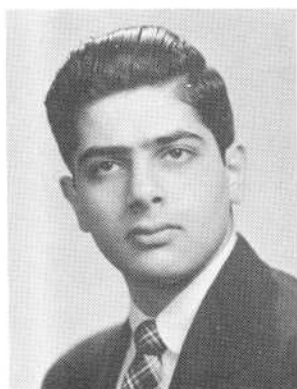
DENNIS R. MOTTA



JAMES PATRICK MURPHY
"Jimmy"



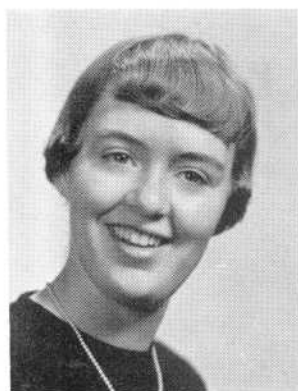
MARCEL MAURICE NADEAU



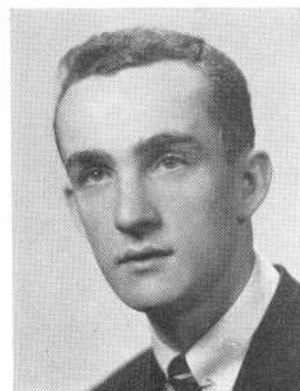
FREDERICK PAUL NASIFF
"Fred"



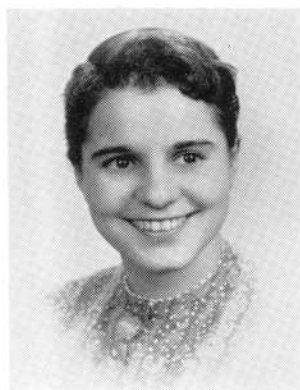
JOSEPHINE ANNE NATALE
"Jo"
Commercial Club 4
Camera Club 4
Home Room Director 3



ELEANOR NELSON
Glee Club 1, 2
Basketball 2



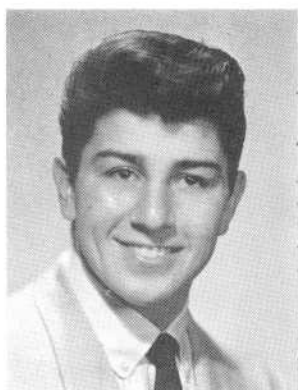
JAMES HOLT NEWTON
"Jim" "Newt"



DINAH NOBREGA
Cafeteria 2, 3, 4



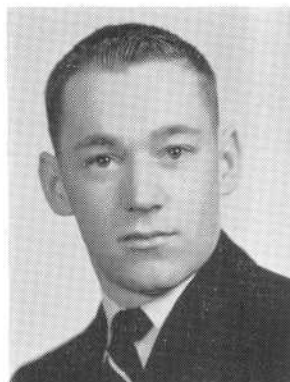
FRANK FLYNN O'BRIEN



JOSEPH ANTHONY OCCHIUTI

"Whop"

Baseball 1, 2, 3, 4
Football 3, 4
Band 1, 2, 3, 4
Varsity Club 4



JOSEPH F. O'CONNELL



DONALD RICARDO OLIVEIRA

National Honor Society 4
World History Club Sec.-Treas. 4
Brass Ensemble 2, 3
Music Appreciation 3



NOREEN OLIVEIRA

"Norry"

Camera Club 4



GAIL W. OWEN

Spanish Club 3, 4
Home Room Director 4
Glee Club 2, 3



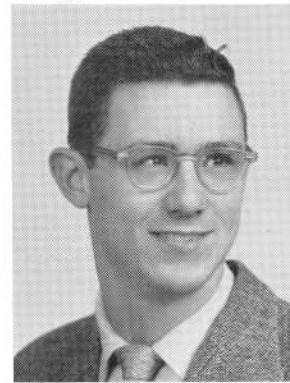
PETER PACHECO

"Pete"



PHILIP DAVID PAIVA

"Phil" "Squeeky"



JOHN EDWARD PALMER JR.

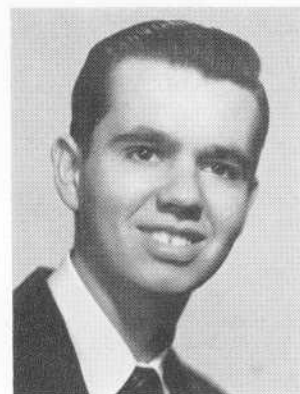
"Jake"



JOAN MARY PANKOWSKI

"Penny"

National Honor Society 4
Home Room Director 2, 3
Numeral Club 2
Office Aide 4
Basketball Tournament 2



NICHOLAS ANTHONY PANNONI

"Nick"



JANET LOUISE PARK

Spanish Club 4
Girls' Glee Club 2, 3
Office Aide 4



JANINA FRANCES PARZYCH

"Janine"

Basketball Tournament 2
Office Aide 3
Commercial Club 4



DOROTHY PAVAO

"Dottie"

Hilltop Staff 4
Portuguese Club 3, 4
Basketball 2



ELITHIA TERESA PERRY

"Lee" "Lith"

Junior Glee Club 2
Senior Glee Club 3
Camera Club 4
Basketball Tournament 2



IRENE THERESA PERRY

"I"

Junior Girls' Glee Club 2
Senior Girls' Glee Club 3
Basketball Tournament 2



RUTH PERRY

Camera Club 3, 4
Junior Girls' Glee Club 2
Senior Girls' Glee Club 3, 4



EVERETT M. PETERSON

"Pete"

Office Aide 4



JACQUELINE ANNE PETTY

"Jackie"



KATHLEEN FRANCES PHILLIPS

"Kathy"

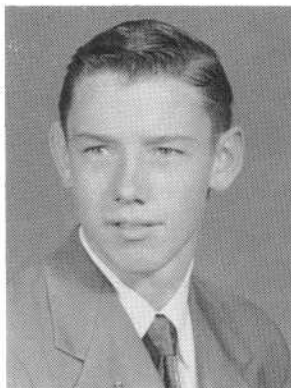
Girls' Numeral Club 3, 4
Volleyball 2, 3, 4



JOAN CAROL PICKERING

"Joanie" "Joni"

Bank Cashier 2, 3, 4
Senior Girls' Glee Club 4
Senior Mixed Chorus 4
Junior Girls' Glee Club 2, 3
Basketball Tourney 2



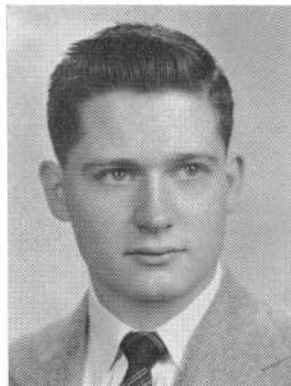
EDWARD JOHN PISZCZ

Home Room Director 2
Orchestra 3, 4
All-State Orchestra 3



JOAN CAROL PIVA

Home Room Director 4
Commercial Club 4
Portuguese Club 2, 3, 4
Junior Girls' Glee Club 1



ROBERT ALAN PLACE

"Bob"

Home Room Director 3, 4
Audio-Visual Aide 4



BEATRICE ANNE PLACIDO

"Bea"

Commercial Club 4



EVA RITA POLSELL

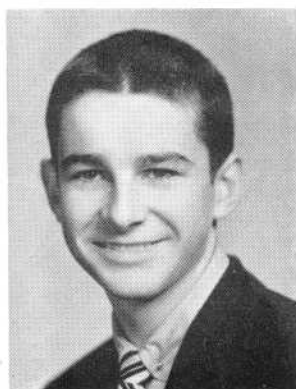
"Ricky" "Ri"

Commercial Club 4
Camera Club 4
Office Aide 4

SYLVIA DIANA POWELL

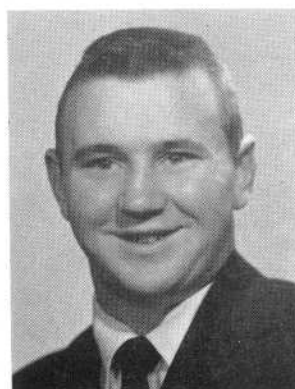
"Syl" "Sue"

Numeral Club 3, 4
Jayvee Basketball 4
Senior Mixed Chorus 3, 4
Senior Girls' Chorus 3, 4
Gym Leader 4
Softball 3



DENNIS POWERS

DONALD J. PRIESTNER



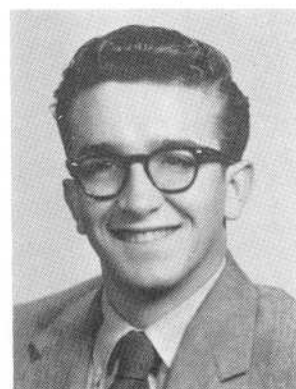
JANET JOAN PROULX

"Susy"

Science Club 3, 4
Home Room Director 2
Senior Mixed Chorus 3, 4
Junior Girls' Chorus 2
Basketball Tourney 2

RICHARD ERNEST PROULX

"Richy"



JOYCE MARIE QUENTAL

"Jody"

German Club 3, 4
Basketball Tournament 2, 3

DOLORES ALVES RAPOSA

"Del"

Commercial Club 4
Portuguese Club 2, 4





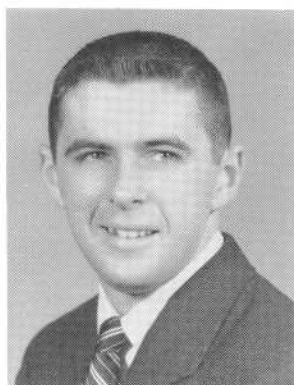
PAULINE ANNE RAPOZA

"Paulie"

National Honor Society 4
Commercial Club 4
Numeral Club 2, 3, 4
Varsity Basketball 4
Jayvee Basketball 3



CHARLES M. RAUNER



WILLIAM RAPHAEL RAWSON



JACQUELINE REBELLO

"Jackie"

Portuguese Club 2



NANCY E. REED

"Nanc"



PAUL A. RICHARD

"Rich"

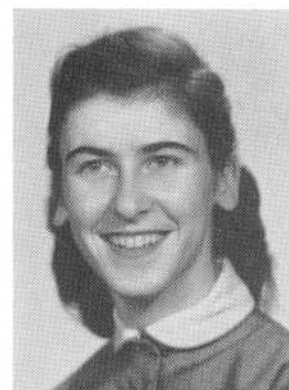
Science Club 3, 4
Mathematics Club 4
Literary Club 4
Audio-Visual Aide 4



BERYL DARLENE RILEY

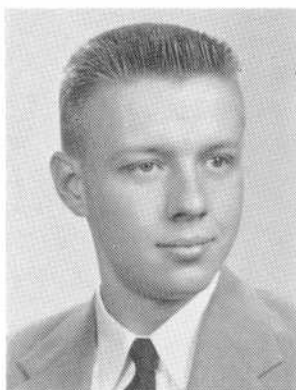
"Ben" "Rile"

National Honor Society 4
Girls' Glee Club 2
Commercial Club 4
Office Aide 4
Record Book Typist 4



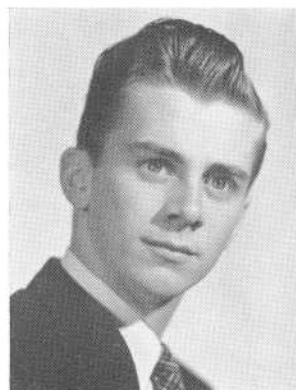
CLAUDETTE IRENE RIOUX

Basketball Tourney 2
Junior Varsity 3
Varsity 4
Commercial Club 4



ELWOOD WALTER ROBERTSHAW

Science Club 4
Mathematics Club 4
World History Club 4
Prom Committee 3
Chess Club 4
National Honor Society 4



LEONARD FRED ROBERTSHAW

"Chuck" "Rob"

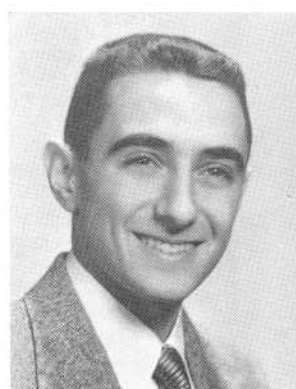
Football 2, 3
Track 2, 3, 4
Varsity Club 4



PAULINE JEAN THERESA ROBIDOUX

"Red" "Paul"

German Club 2, 3, 4
Camera Club 4
Office Aide 4



RONALD PATRIC ROBINSON

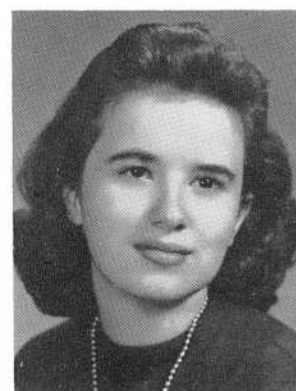
"Harpo" "Rob"

Mathematics Club 4
Chess Club 4



HELEN EILEEN RODRIGUES

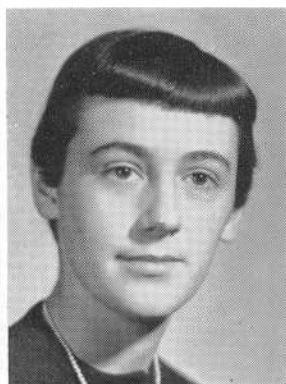
Portuguese Club 2, 3, 4
Commercial Club 4



ELLEN MARGARET ROGERS

"Peggy"

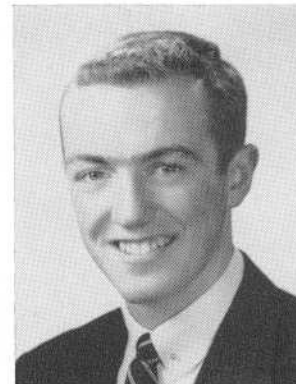
Junior Glee Club 2
Basketball Tournament 2
Commercial Club 4



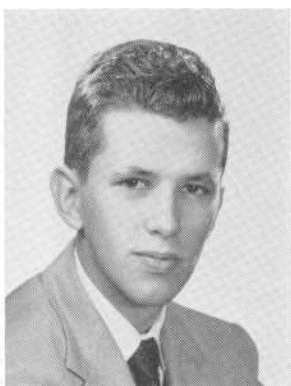
CLAIRE DIANE ROSS

"Rossie"

Girls' Numeral Club 2, 3, 4
Glee Club 1, 2
Basketball 2
Volleyball 2, 3
Bowling 2, 3
Badminton 2, 3



RICHARD ELLWOOD ROUNDS



GERALD ROUSSEAU

"Gerry"

German Club 3, 4
Home Room Director 2



FREDA SABER

"Fred"

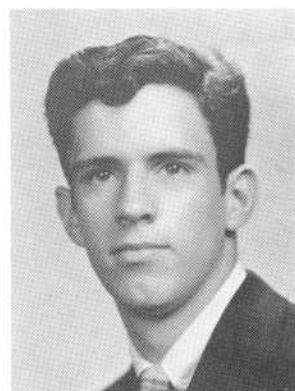
Commercial Club 4
World History Club 4
Office Aide 4
Health Councillor 4



JEANNINE D. ST. GERMAIN

"Jean"

German Club 2, 3, 4



WILFRED DENNIS ST. MICHEL

"Saint"



ANNETTE MARIE ST. OURS

Literary Club 4
Glee Club 1, 2
Commercial Club 4



CLAUDETTE RITA ST. PIERRE

"Claudie"

Girls' Glee Club 2
Commercial Club 4
Basketball Tournament 2
Office Aide 4



CAROLYN HOPE SAMPSON

"Carol"

German Club 3, 4
World History Club 4
Glee Club 2
Camera Club 4
Basketball Tournament 2
Audio-Visual Aide 2, 3, 4



JAMES JOHN SAMPSON

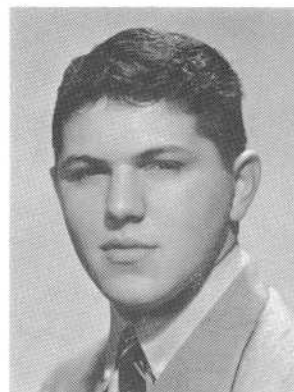
Science Club 3, 4
Audio-Visual Aide 1, 2, 3, 4
Chief Operator 3, 4
Camera Club 2



FRANCIS L. SANDOMIERSKI

"Sandy"

National Honor Society 3, 4



AARON SANFT

"Ollie"



ALICE MARIE SANTOS

"Al"

Literary Club 4

Secretary 4

French Club 4

Commercial Club 4

Home Room Director 2



MARIE NANCY SANTOS

Glee Club 1, 2

Portuguese Club 2, 3, 4

Commercial Club 4

French Club 4

Music Appreciation Club 4



ALAN SCHOFIELD

"Scho"



ANNE MARIE SHEA

National Honor Society 4

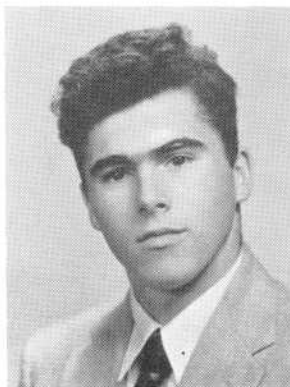
Dramatic Club 2, 3, 4

Thespians 4

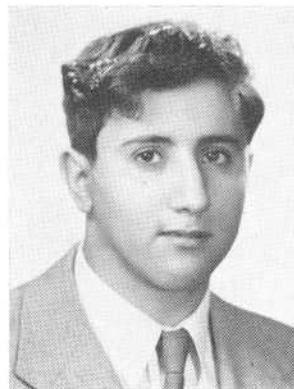
Secretary, French Club 3

Girls' Numeral Club 2, 3, 4

German Club 3, 4



JOHN JOSEPH SHEAHAN



GEORGE ANTHONY SHEDIK

American History Award 3

U.N. Essay Winner 4

Library Aide 2, 3, 4

Home Room Director 2



JOAN NANCY SHERMAN

"Joni"

Mathematics Club 3, 4
Spanish Club 3, 4
Junior Girls' Glee Club 3
Numeral Club 3
Bowling 3
Softball 3



HELEN ANN SIKORA

Senior Girls' Glee Club 3, 4
Junior Girls' Glee Club 2
Basketball Tournament 2

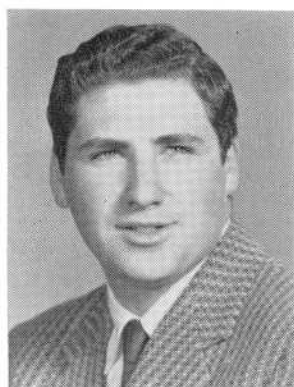
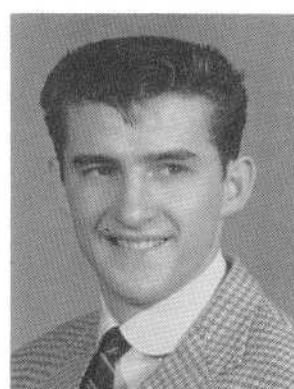


DAVID R. SILVA

GERALD JOSEPH SILVA

"Gerry"

Orchestra 1, 2, 3, 4
Band 1, 2, 3, 4
All-State Orchestra 2, 3, 4
Librarian Band, Orchestra 1
Business Manager—Orchestra 1
Portuguese Club 2, 3, 4



DAVID SILVER

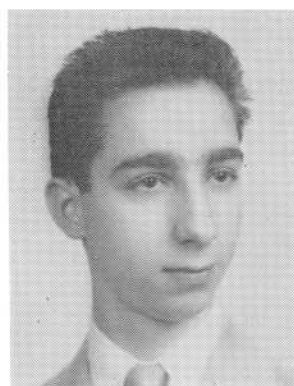
"Beef"

Science Club 3
National Honor Society 4

GERALDINE SILVIA

"Gerry" "Ger"

Junior Girls' Glee Club 2
Portuguese Club 2, 3, 4
Secretary 3
Health Councillor 2
Basketball Tournament 2



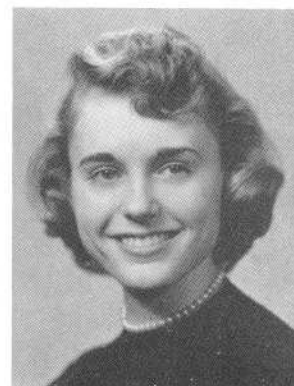
RAYMOND GEORGE SIMON

"Ray"

Serenaders 2, 3, 4
Senior Mixed Choir 2, 3
Boys' Glee Club 2, 3
Music Appreciation 3
Dramatic Club 2

RUTH BEVERLY SIMONDS

Glee Club 1
Boys' Cafeteria 2





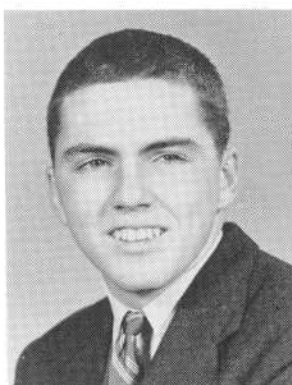
PAULINE SIROIS

Home Room Director 3
Office Aide 4
Basketball 2

CAROL ELIZABETH SKELLY

"Skel-Skel"

Portuguese Club 2, 3, 4
Health Councillor 4
Cafeteria 2, 3, 4



JAMES JOSEPH SKELLY III

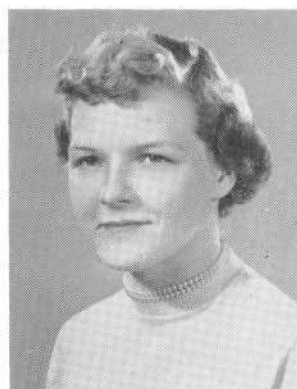
"Yo"

Football 2, 3, 4
Track 2, 3, 4
Mathematics Club 4
Dramatic Club 4
Science Club 4
Literary Club 4

BARBARA ANN SMITH

"Barb"

Basketball Tournament 2
Girls' Glee Club 3



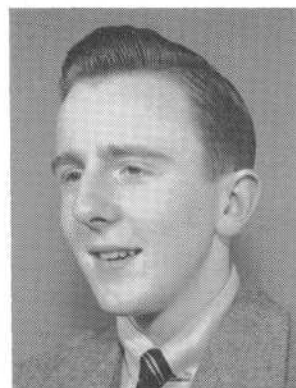
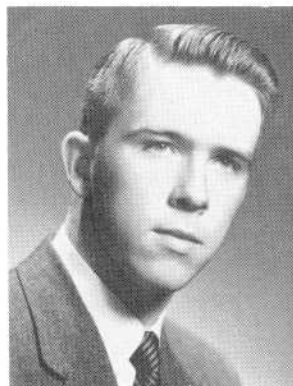
CAROL ANN SMITH

Audio-Visual Aide 2
Basketball Tournament 2
Junior Girls' Glee Club 2

DAVID LINGANE SMITH

"Dave" "Smitty"

Student Council President 4
Representative—Student Gov't. Day 4
Home Room Director 2, 3, 4
Basketball 3, 4
Football Student Manager 2, 3, 4
Varsity Club 3, 4



DONALD KEVIN SMITH

"Don"

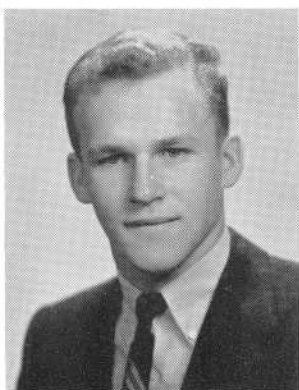
Dramatic Club 2
Traffic Squad 2

PATRICIA FAY SMITH

"Pat"

Junior Girls' Glee Club 2
Senior Girls' Glee Club 3, 4
Senior Mixed Chorus 3, 4



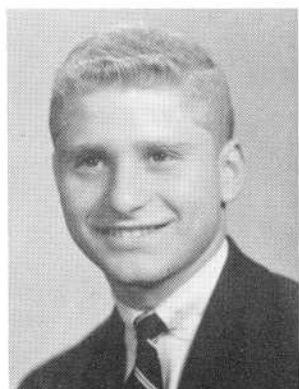


DONALD SNELL

SHIRLEY MAE SOKOLETSKY

"Shirl"

Speakers' Bureau 4
National Honor Society 3, 4
Library Aides 2, 3, 4
President 4
Vice President 3
Secretary 2



STANLEY WILLIAM SOKOLOF

"Sokie"

National Honor Society 4
Science Club 3, 4
Mathematics Club 4
Varsity Club 4
Tennis 2, 3, 4
Dramatic Club 2, 3



EDWIN HAROLD SOLUP

Band 1, 2, 3
Orchestra 1, 2, 3
Music Appreciation Club 4



SONYA SONION

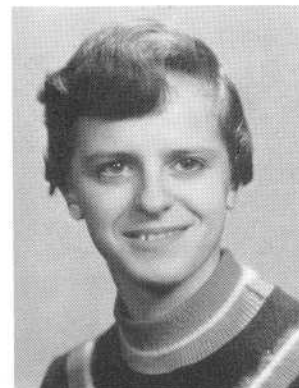
National Honor Society 4
Music Appreciation, Vice Pres. 4
Camera Club 2, 3, 4
Mathematics Club 2, 3, 4
Audio-Visual Aide 4
Band 3, 4



CLAUDIA LOUISE SOUSA

"Clardy" "Cland"

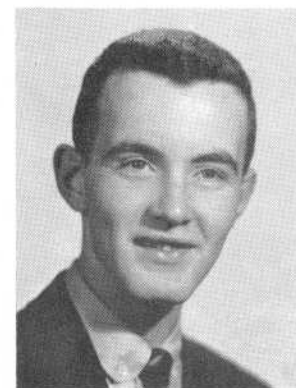
Portuguese Club 2, 3, 4
Junior Girls' Glee Club 2
Senior Girls' Glee Club 3, 4
Senior Mixed Chorus 3, 4
Silvertones 4



MARY CONSTANCE SOUSA

"Connie"

Commercial Club 4



KENNETH McDOWELL SOUTHWORTH

"Sodie" "Ken"



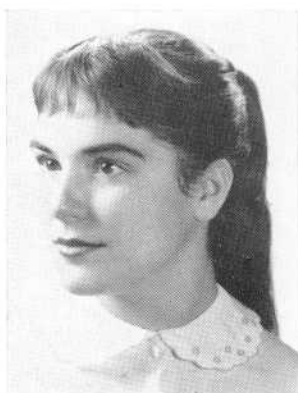
ANN SOUZA



DELORES JEAN SOUZA

"Dellie"

Home Room Director 1, 2
Portuguese Club 2, 3, 4
Camera Club 4
Commercial Club 4
Junior Glee Club 2



ELAINE CATHERINE SOUZA

"Lanie"

Junior Girls' Glee Club 2
Basketball Captain 2
Portuguese Club 2, 3, 4
Volleyball 2
Senior Girls' Glee Club 3



LEONORA DALE SOUZA

"Lee"

Commercial Club Vice President 4
Glee Club 2
Basketball 2



LOUISE PHYLLIS SOUZA

"Lou"

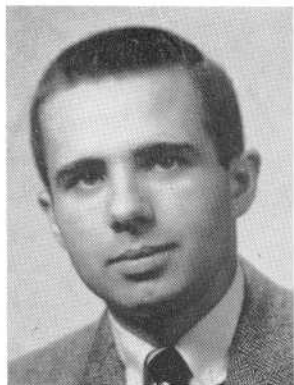
Home Room Director 2, 3, 4
Health Councillor 3
Junior Girls' Glee Club 2
Senior Girls' Glee Club 3
Basketball Tourney 2



MARY LUCY SOUZA

"Lu"

Commercial Club 4
Girls' Glee Club 1, 2, 3, 4
Senior Mixed Chorus 3, 4



RICHARD M. SOUZA

"Dick"

National Honor Society 4
Science Club 3
Mathematics Club 2, 3
Dramatic Club 2, 3, 4
National Thespian Society 3, 4



CHARLOTTE ANN SOWA

National Honor Society 4
Camera Club 2, 3, 4
President 4
Math Club 4
French Club 3, 4
Junior Girls' Glee Club 2



JEAN SOWERSBY

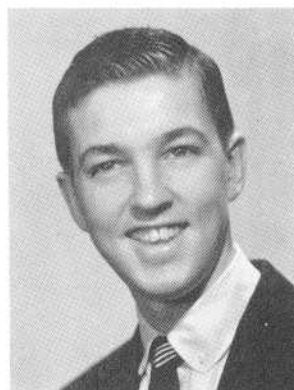
"Jeanie"

Hilltop Staff 4
Commercial Club 4
Office Aide 3, 4
Camera Club 3
Literary Club 4

BENJAMIN ARTHUR SPENCE

"Ben"

Dramatic Club 2
Senior Mixed Chorus 2
Boys' Glee Club 2
Serenaders 2
National Honor Society 3, 4

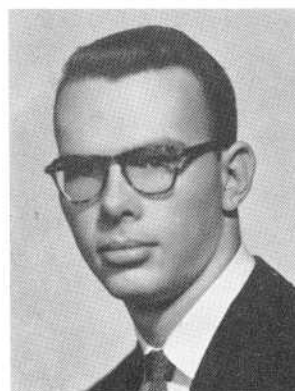


FREDERICK EDMUND STANDISH

JAMES FREDERICK STARKIE

"Red" "Beaver"

President, Senior Mixed Chorus 4
Orchestra 1, 2, 3, 4
Band 1, 2, 3, 4
Football 1, 4
Baseball 3, 4
Hilltop Serenaders 4



ALLAN JEFFREY STONE

"Al" "Stonie"

Tennis 2, 3, 4
Camera Club 3
World History Club 4
Math Club 3

NANCY GERTRUDE STONE

"Nanc"

Basketball Tourney 2
Volleyball Tourney 2



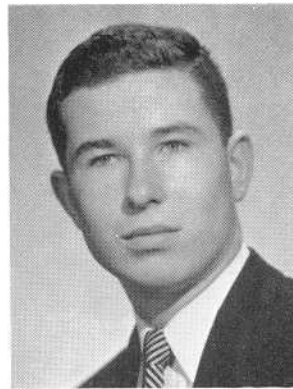
JANE ANN STRZEPKA

Basketball Tournament 2
Girls' Glee Club 2

GEORGE EDWARD SULLIVAN

"Sully"

Football 2, 4
Basketball 1
Asst. Mgr. Basketball 1, 2
Asst. Mgr. Football 1
Varsity Club 4



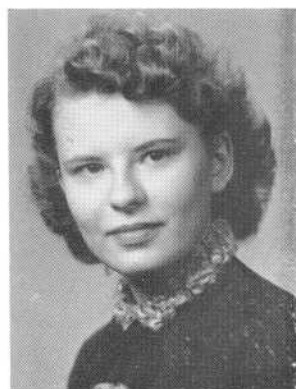
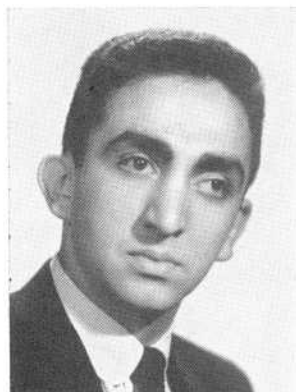


KATHERINE M. SULLIVAN

"Kate" "Sully"
German Club 2, 3, 4
Health Councillor 2
Basketball Tourney 2
Volleyball 2
Cafeteria 4

SAM SWIDEY

National Honor Society 3, 4
Record Book Editor 4
Public Speaking Award 3
Hilltop Staff 4
Class Vice President 2
Hilltop Serenaders 2, 3, 4

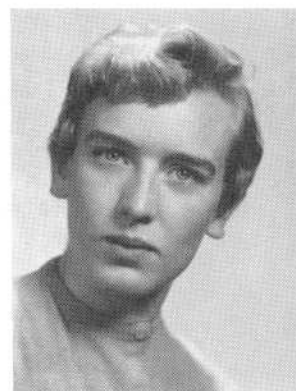
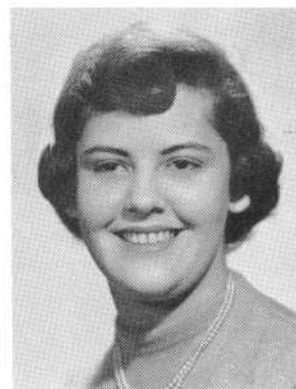


DANA LILLIAN SZCZEPKOWSKI

Science Club 3, 4
French Club 4
Math Club 4

MARIE ELLEN TACOVELLI

"Tackie"
Camera Club 2
Basketball Tournament 2
Spanish Club 3
Secretarial Work 4

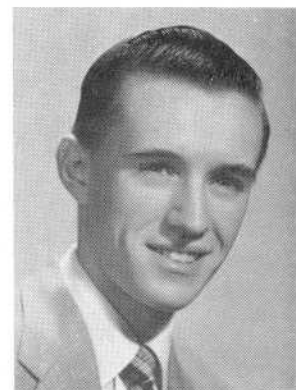
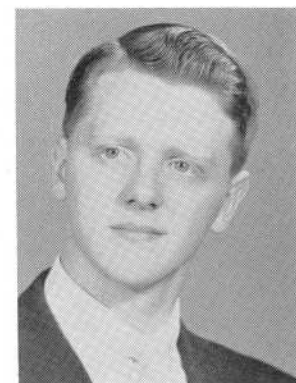


LORNA LEE TAYLOR

Girls' Glee Club 2
Basketball Tourney 2
Majorette 3, 4
French Club 3

GEORGE EDWARD TEASDALE

Senior Mixed Chorus 3
Boys' Glee Club 3
Camera Club 3



DAVID TERRY

"Dave"
Audio-Visual Aide 1, 2, 3, 4
Chief Operator 4
Science Club 3, 4
Glee Club 2

ROSALIND ELIZABETH THERIAULT

"Roz" "Rozzie"
French Club 3
Girls' Glee Club 1
Cafeteria 2, 4





CHARLOTTE EVELYN THIBAUT

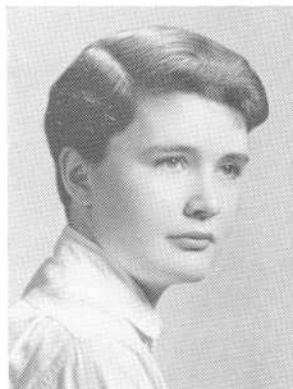
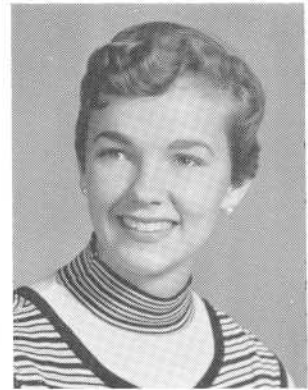
"Charl" "Charlie"

Junior Girls' Glee Club 2
Senior Girls' Glee Club 3, 4
Senior Mixed Chorus 3, 4
Numeral Club 3, 4
Basketball Tourney 2
Volleyball Tourney 3

MARILYN THOMPSON

"Mal"

Home Room Director 3
Music Appreciation Club 3
Senior Mixed Chorus 4
Junior Girls' Glee Club 1
Senior Girls' Glee Club 4

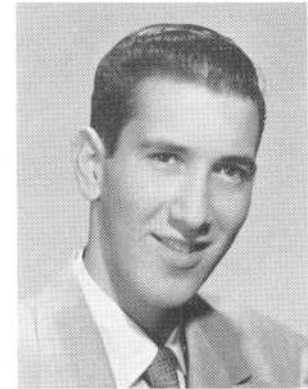


BEVERLY JOYCE TIERNEY

"Bev"

World History Club 4
Basketball 2
Secretarial Work 4

WILLIAM RICHARD TORRES



EDMOND E. M. TOURIGNY

DANIEL JOSEPH TRAINOR

"Dan"

Band 1, 2, 3, 4
Literary Club 4
Home Room Director 1



ALBERT TRAVERS

"Butch" "Al"

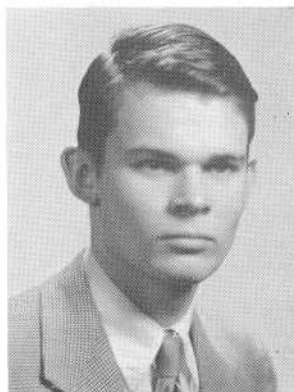
MADELINE HELENA TRAVIS

Portuguese Club 2, 3, 4
Commercial Club 4
Junior Girls' Glee Club 2





JOSEPH A. TRECIDA
"Joe"



JOHN ERIC TUTTLE
"Sam Johnson"
 Mathematics Club 2, 3, 4
 Science Club 3, 4
 Health Councillor 3
 Baseball 1
 Chess Club 4



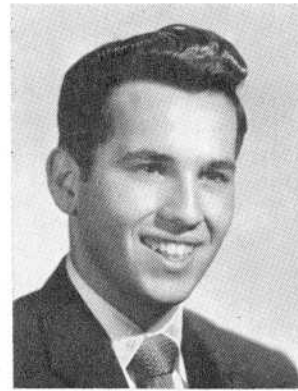
BARBARA ESTHER UDOZIN
"Barb"
 Commercial Club 4
 Camera Club 3, 4
 Literary Club 4



DOROTHY H. URBAN
"Dottie"
 National Honor Society 3, 4
 Office Aide 3, 4
 Typist, Record Book 4
 Commercial Club 4
 Camera Club 2
 Junior Girls' Glee Club 2



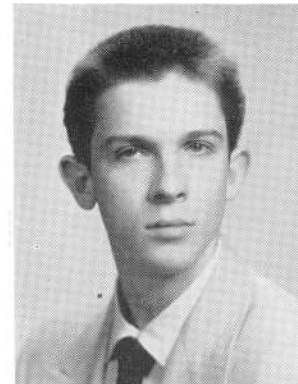
BEATRICE GEORGETTE VEZINA
"Bea"
 Commercial Club 4
 Girls' Glee Club 2
 Music Appreciation Club 4
 Cafeteria 3



DAVID VIEIRA
 Home Room Director 3



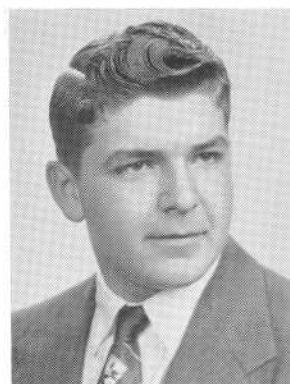
NORMAND L. VINCENT
"Rocky"



GERALD P. VIOLETTE
"Gerry"



JOHN JOSEPH VIVEIROS
"Viv" "Snowflake"



CHARLES M. WALKER JR.



CONSTANCE H. WILBUR
"Connie"

Office Aide 4
 Junior Girls' Glee Club 2
 Senior Girls' Glee Club 3
 National Honor Society 4



JANET WINICK

Editor of Hilltop 4
 National Honor Society 3, 4
 Dramatic Club Treasurer 3
 Thespian Secretary 4
 Sanitation Commission Secretary 2, 3
 Class Vice President 1



LOIS WINSLOW

Band 2, 3, 4
 Librarian 3
 World History Club 4
 World History Club Vice President 4
 Spanish Club Vice President 4
 National Honor Society 4



CAROLE ANN WISHART

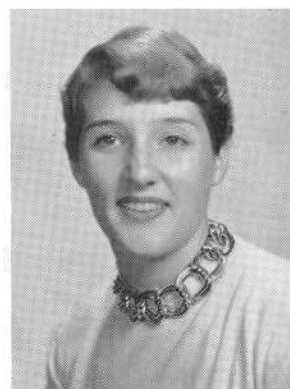
National Honor Society 4
 Business Manager, Record Book 4
 French Club President 3
 Orchestra 1, 2, 3, 4
 Girls' Numeral Club 2, 3, 4
 Varsity Basketball 4



LOIS ANN WOLPERT

"Loie"

Captain Varsity Debating 4
 Mathematics Club
 Vice President 3
 Secretary 2
 National Honor Society 3, 4
 Science Club 3, 4



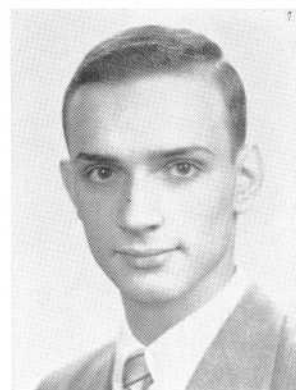
AMY WRIGHT

Band 2, 3, 4



BASIL YANKOPOULOS

Science Club 3, President 4
Mathematics Club 4
Chess Club 4
Senior Mixed Chorus 2
Boys' Glee Club 2



CHARLES L. YANKOPOULOS

National Honor Society 4
Mathematics Club 2, 3, 4
President 4
Home Room Director 4
Science Club 3, 4
Speakers Bureau 4

RONALD E. CHAMPOUX

FRANK PERRY, JR.

FRANK W. GRIMES

JOHN J. ROCHA

THOMAS F. LARKIN

GILBERT C. RODERIGUES

ROBERT N. LAVOIE

DONALD E. SNOW

ANTHONY F. MACEDO

JOHN C. SOUZA

ALFRED R. MICHAEL

JOHN M. URBAN

ROBERT L. ORABONA

AUSTIN WOOD

ROBERT C. OVERBURY

ROBERT F. WOOD

WILLIAM J. PAUL

'51 — WE WERE FRESHMEN . . . '52

The year — 1951. The big clock in the tower on the hill told us the time had come to enter our new school — Durfee High.

Yes, the days of grammar school were behind us; we were now Durfeeites!

We soon elected a group of our classmates to lead us. We chose John Hathaway, president; Janet Winick, vice-president; Carolyn Frain, secretary, and Warren St. Pierre, SAA councillor.

Scholastically, some of us made the All-A or Principal's List—not all of us, naturally, but an impressive few.

Socially, we “got into the groove” and made friends at the Freshman Party. Each division chose a representative to serve on the committee which, with the Student Council, planned the affair.

Soon our freshman basketball tournament was under way and all true '55-ers saw the games at the Boys' Club. Captain of the Durfee team was our president, John Hathaway. Other members, equally deserving of our remembrance, were John “Judge” Hurley, Ray Kiley, Dave Smith, Bob Borge, Larry Medeiros, Fred Nassif, Joe O'Connell, John Litos, Don Greenslade, Ray Phillips, Chick Gesner, Phil McHugh, Bob Jose, George Sullivan and John Cronin, with John Corrigan as student manager.

Morton, Lord and Durfee tied for honors. Noteworthy for us was the fact that Hathaway and O'Connell were named to the All-Tourney team.

In March we had our first view of Boston Garden. Our boys won the Eastern Mass but lost to Rogers of Newport in the New England quarter-finals. Although our throats were hoarse and our hearts heavy we were still able to shout “Gimme a D . . . Gimme a U . . . Gimme an R . . . Gimme an F . . . Gimme an E — Gimme another E . . . What have you got? — DURFEE!”

This was the beginning, and what we got out of it made us want more, so we came back . . .

'52 — THEN SOPHOMORES . . . '53

Reinforced by the graduates of Morton and Lord, we made a formidable Sophomore Class, that fall of '52.

October, 1952. Our Hilltop headlines . . . "Durfee Mourns Beloved Principal." We hadn't really known Mr. Carroll, but we joined those who had known and loved him, in their sorrow. Later, with the other classes, we welcomed our new principal, Ambrose F. Keeley.

Election time again, with these results: John Hathaway, president; Sam Swidey, vice-president; Carolyn Frain, secretary; Joan Drewniak and Charles Gesner, SAA councillors; Bev Costa, SAA secretary.

Thanksgiving Day — and we were there, with banners and buttons and everything else red and black. And our team won!

Scholastically, too, we ranked high. David Dixon, Carolyn Frain, Bob Hillman, Delores Rapoza, Dot Urban and Janet Winick made the All-A, and 41 sophs were on the Principal's List.

At a special assembly for our class we saw the Music Department's "Opera Highlights." The Varsity Club's annual show was staged in April and was as successful as ever. With such unique performers as our Durfee athletes taking part in the hilarity and such clever productions as we've come to expect from Miss Shalloo and Mr. D'Adamo, how can it ever be anything but the greatest?

And it was during this show that one of our own — Cindy Bates — was crowned Varsity Queen. Cindy then went on to cop the titles of Miss Bunny Hop and Miss TV. We sophs were proud of our beauty contest winner — like us, a soph.

It was a good year — that sophomore year. At its end the Class of 1955 had found itself and felt itself really a part of Durfee, with great things still to come. In the fall we would return — not as freshmen, not as sophomores — but as UPPERCLASSMEN!

'53 — THEN JUNIORS . . . '54

From here on in we would be "Big Wheels."

Something new was added to the curriculum — "for boys only." Cooking classes were set up for boys and 50 of us defied all quips and wise-cracks from our fellow men to gain practical experience in preparing meals. And these brave boys proved they could excel in the culinary art.

John Hathaway was again our leader, with Maureen Dickinson as our new vice-president. Carolyn Frain was re-elected secretary, with Joan Drewniak and Bob Bogle as SAA councillors and Bev Costa as SAA vice-president.

It was during our junior year that dum-de-dum-dum, four gruesome notes, became the new national theme, and Durfee was hit by the Dragnet dirge. But life went on and six of our classmates made the All-A List — Dave Dixon, Carolyn Frain, Bob Hillman, Jackie Massoud, John Moore and Janet Winick. For Dave, Carolyn and Janet — it was their third straight year in the select group! Twenty-eight were on the Principal's List.

On the basketball scene, three of our classmates were prominent on the Jayvee team which compiled a record of 12 out of 14. They were Ray Longshaw, Dick Duffy and Dave Smith.

"Harvey" took Durfee by storm that year. Prominent in the cast were our classmates, John Moore, Nancy Hartley, Shirley Sokoletsky, Janet Winick and Richard Sousa.

In the spring we held our last election, choosing those who would lead us along the last stage of the journey, come fall. After spirited campaigning John Hathaway was returned president; "Moe" Dickinson, vice-president; Jean Baldyga, secretary; Dave Smith, SAA president; Joan Drewniak and Bob Bogle, SAA councillors; Sam Swidey and Carol Wishart, editor and business manager, respectively, of the Record Book. Janet Winick was appointed editor of the Hilltop, and 23 of us were elected to the National Honor Society.

Three down and one to go!

'54 . . . and finally SENIORS ! — '55

Here at last — and yet, all too soon! It should be our best year.

In football, we had plenty of thrills. We defeated Coyle, 20-7, and climaxed the season with a fine 14-6 victory over New Bedford at Alumni Field on Thanksgiving Day. At the annual Football Banquet at the close of the season, Fred Drayton was awarded the Jake Reagan Memorial Trophy as Durfee's outstanding player.

Dave Smith was elected to represent Durfee at Student Government Day in Boston, and later in the year Janet Winick was chosen to represent our school at the meeting of the Daughters of the American Revolution.

We went to the Garden for the basketball windup. It was Durfee's 11th consecutive invitation, and we were happy that we got into the tournament, even though our boys lost in a semi-final to Quincy High. George Miller and John Hathaway were stalwarts on the team all season and Miller received the George Kaplan Memorial Award in recognition of his contribution to another successful Durfee season.

In the spring, 63 of us were chosen for membership in the National Honor Society and the induction on May 25 was a most memorable occasion. Fred Drayton was elected Student Mayor of Fall River.

As this is written, graduation time is fast approaching. Soon that all-important diploma will be placed in our hands and we will have reached the end of the high school road. It has taken us a long way, but not without profit. We've tried to do our best in our studies — most of the time — and at the same time be a part of Durfee's life.

We have many memories to take with us — and we hope this book will help us retain them.

This was our life — and truly a very wonderful one!

Activities





Left to right, front row: J. Drewniak, J. Fazio, D. Smith, V. Mello, R. Bogle. Middle row: M. Nawrocki, H. Cabral, W. Baldyga, C. Golz. Top row: D. Sullivan, D. Harrington, J. Hathaway, G. Miller, S. Drewniak, P. Hurley.

STUDENTS' ACTIVITIES ASSOCIATION

The Students' Activities Association is the only organization whose membership is open to all students. Its governing body is the Student Council, whose aims are to promote extra-curricular activities and to develop school spirit and leadership.

In September, Guide Books were issued to freshmen and sophomores to orientate them. Later in the month, the SAA drive for membership was conducted.

The first school dance of the year, the Harvest Hop, was held in October. To accentuate the football season the Pigskin Hop and the annual Football Banquet were held in honor of our team. The Christmas Dance added to the holiday festivities, and the New Year began with the Mid-Winter Hop. The last dance of the year was the Spring Dance.

In the fall and spring, assemblies were sponsored by the SAA. Also in May, the annual Officers' Banquet was held. The Awards Assembly in June closed the year by giving recognition to all school and club officers.

SAA officers are President David Smith '55, Vice-President Joseph Fazio '56, and Secretary Vivian Mello '57.

Faculty advisors are Miss Yolande B. Laliberte, Miss Alice C. Harrington, Mr. Joseph B. D'Adamo. Honorary members are Miss Alice G. Langford, Mr. James F. Conlin and Miss Anne L. O'Neil.



Left to right, front: M. Levesque, J. Abbott, T. Correia. Back: M. Ferreira, L. Vital, J. Pickering, A. Michael.

BANK CASHIERS

Tuesday is Bank Day. This cheery warning is given to all Durfee High School students each week.

There are approximately 200 depositors who save between four and six hundred dollars each week.

The money is collected by a representative of the home room, then brought to the office where it is received by the bank cashiers, who then tabulate the savings. A bank messenger then picks up the savings in a locked bag.

Bank cashiers help in the distribution of savings to seniors, who receive their entire sum at the end of the scholastic year. Upon receiving their savings seniors may either take the cash saved or they may open an adult account.

Much is owed to bank cashiers, for they have been very faithful in attendance during the year.



Left to right: P. Bannister, H. Boyko, C. Sowa.

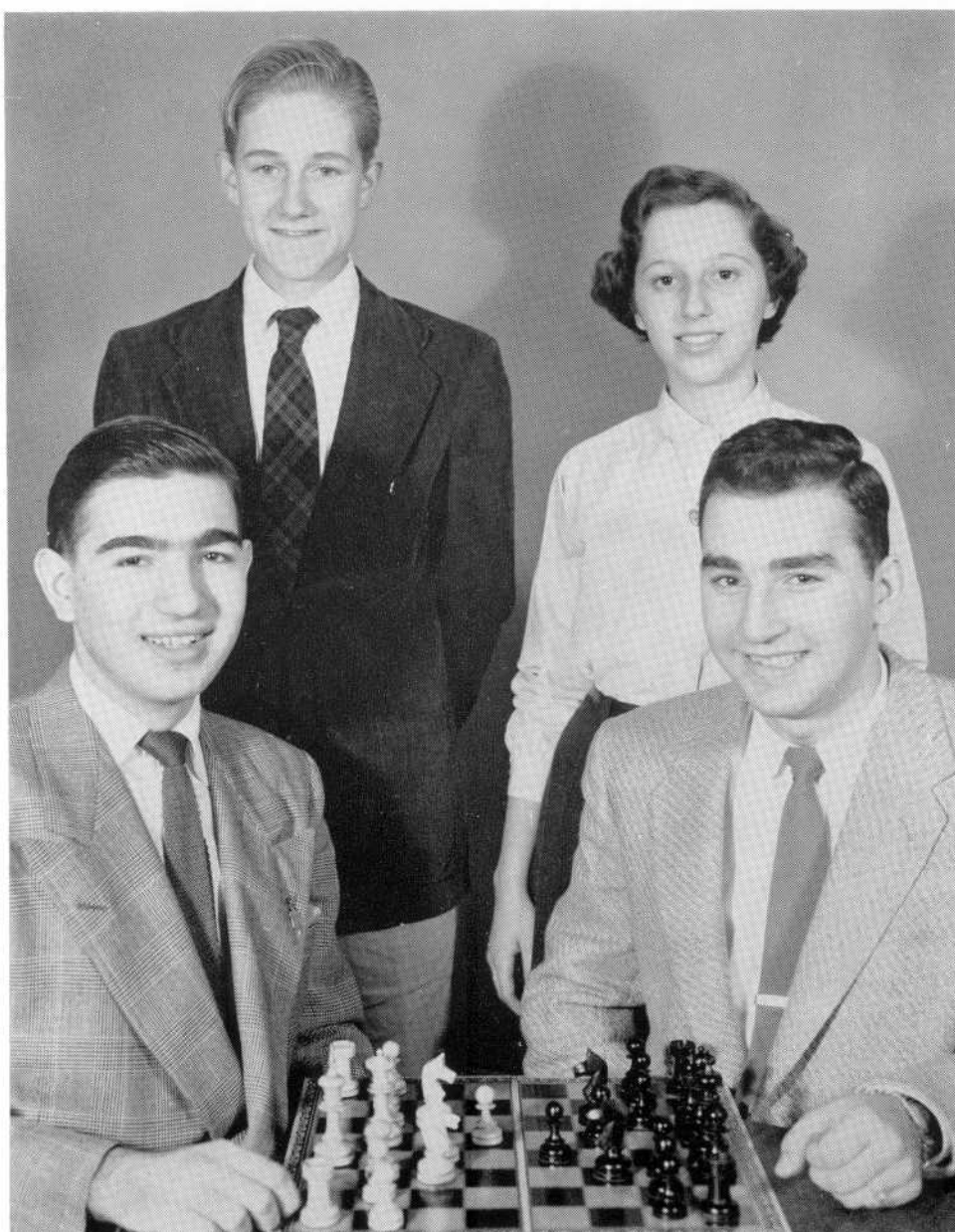
CAMERA CLUB

The Camera Club offers students the opportunity to learn about photography and increase any previous experience.

The club sponsors a snapshot contest open to the entire student body. A photographic exhibit, loaned by the 1954 National High School Photographic Awards sponsored by Eastman Kodak Company, is shown annually.

The activities include talks by professional photographers, slides on picture-taking subjects, and the innovation of a student-operated darkroom.

The officers are Charlotte Sowa, president; Peter Bannister, vice-president; and Helena Boyko, secretary. The faculty advisor is Mr. Joseph J. Lawlor.

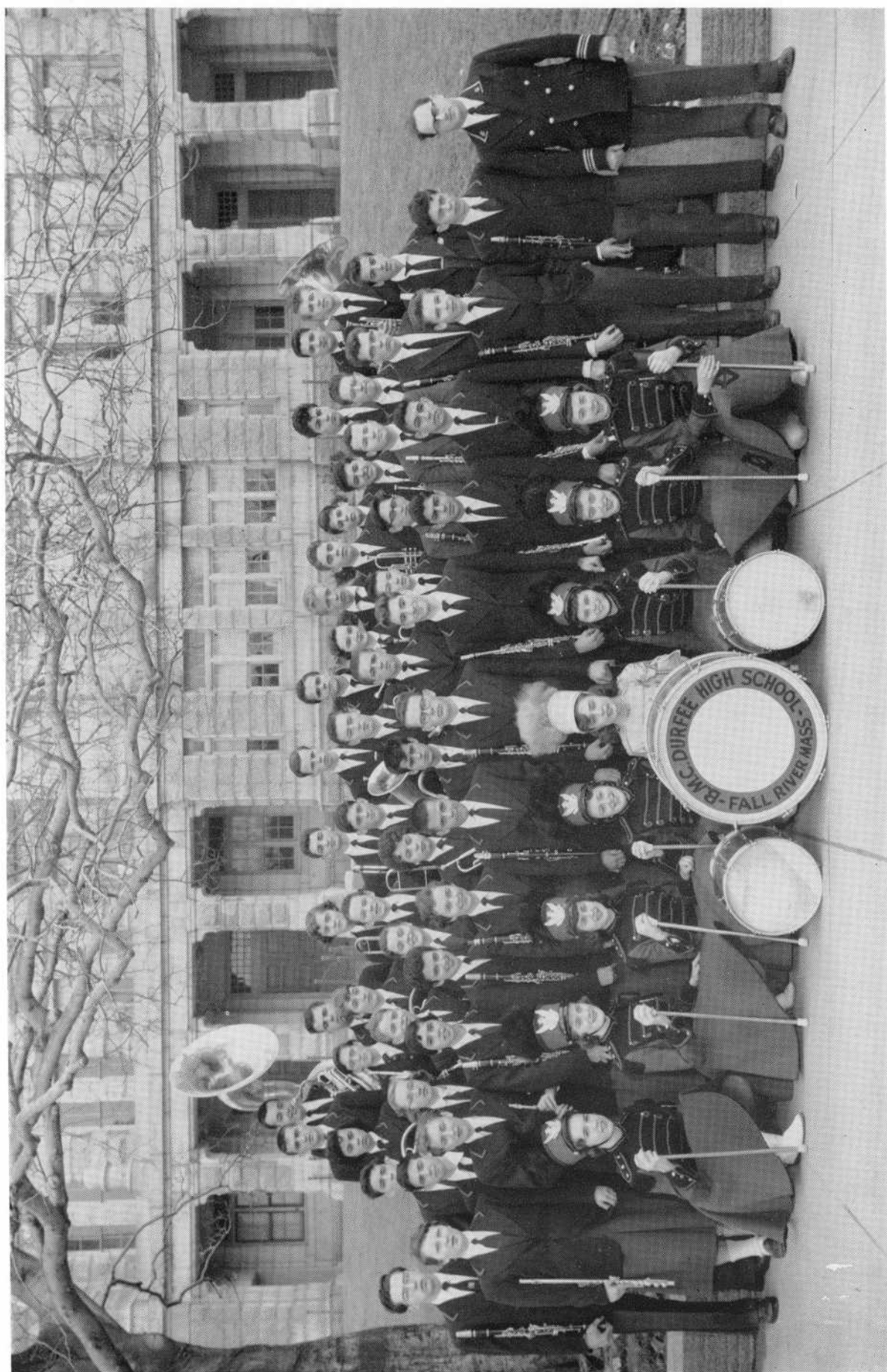


Left to right, front row: T. Kuliopulos, G. Coutroubis. Rear row: P. Lincoln, B. Jamoulis.

CHESS CLUB

For the first time in the history of Durfee, a chess club has been organized, with Mr. Clinton A. Borden as faculty advisor.

The Club was founded in order to satisfy the desires of the many chess players at Durfee, and to develop a proficiency in the playing of the game. A tournament is planned, the winners of which will form a chess team of four. This team will challenge teams of neighboring schools.



BAND

The primary purpose of this organization is to give the students attending Durfee an opportunity to study and perform band music of quality. Students receive training not only in making music but also in good citizenship and good sportsmanship.

The Durfee Band performs at all home football games and in holiday out-of-town games. It also takes part in civic parades and other local celebrations. During basketball tournament season, the band accompanies the team and its boosters to out-of-town games. Throughout the school year, the band plays for pep rallies and outdoor assemblies.

In the spring, the organization takes part in festivals of the Massachusetts Music Education Association and plans now include an annual spring concert.

Membership in the band is open to all students playing brass, woodwind or percussion instruments who are willing to be good citizens and work together harmoniously.

Officers for the band during the 1954-1955 school year are: Manager, Donald Oliveira; Assistant Manager, Patricia Donnelly, and Librarian, Jacqueline Freitas. The band is directed by Mr. Faust D. Fiore.



Left to right: J. Linhares, P. Medeiros, L. Souza.

COMMERCIAL CLUB

The Commercial Club is an organization composed of seniors who have attained 75% in English and 75% in any two commercial subjects at the close of their junior year.

The club endeavors to foster an interest in business. To achieve this purpose it sponsors assemblies at which business leaders and graduates of the commercial course talk and give advice to the pupils.

An Awards Assembly is conducted in April. This year a spelling project was conducted by NOMA in seven high schools in this area. Pauline Medeiros, president of the Commercial Club, was the winner of the NOMA award.

The club also holds social functions such as an acquaintance party and an outing.



Left to right, front row: L. Wolpert, D. Dixon, A. Golembewski. Rear row: L. Spiro, G. Callahan, B. Jamoulis, W. Reilly.

DEBATING SOCIETY

The Varsity Debating Society, a member of the Narragansett Debating League, has had an extremely active season. Debating the question, "Resolved: That the United States should continue trading non-strategic materials with Satellite Nations," the team has met difficult opposition but has retained an admirable record.

The negative team consists of Lionel Spiro and Lois Wolpert. David Dixon and Ann Golembewski make up the affirmative. Other members of the society are Bessie Jamoulis, Electra Vaxivanos, William Reilly and Geraldine Callahan.

The faculty advisor is Mr. Paul G. Buckley.



"Uncle Elizabeth"



D.D.C. Officers



"It is a far far better rest"



"How much in de bank?"



Troupe 254 National Thespian Society



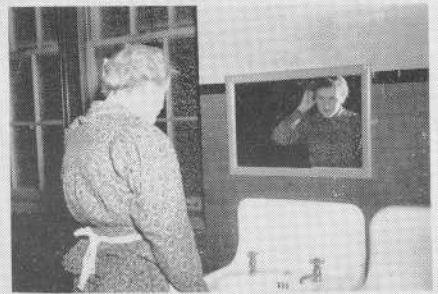
Thespian Officers



A make up test



Four Hansons



I Remember Mama



DRAMATIC CLUB

Nancy Cooperstein, recorder; Shirley Bump, secretary; John Moore, president; Melvin Yoken, vice-president; Roger Bernard, treasurer.

I remember . . . Durfee High School, the granite castle on a hilltop towering high above Fall River. But most of all I remember . . . the DUFFEE DRAMATIC CLUB. In June 1954, eight of us journeyed out to Indiana University to present "Harvey" at the National Thespian Dramatic Arts Conference. After three eventful weeks we returned proud of our performance and also proud of our great country after visiting such historic places as New York, Philadelphia, Valley Forge and Washington, D. C.

I remember . . . when school opened, despite hurricanes and ice storms, we carried out an active program. Our first production of the year, T.N.T., included three one-act plays, "Lorna Doone," "This Way to Heaven" and "The Valiant," all directed by student Thespians. I remember the Christmas matinee, "Hans Brinker," which delighted the grade children. I remember the get-acquainted Hallowe'en Party and a very merry Thespian Christmas party. But most of all . . . I remember "Mama," presented for two performances just before the winter vacation. The audience, too, will long remember that lovely play.

I remember . . . the Massachusetts Drama Festival at which Durfee gave the Shaw comedy "A Man of Destiny" with 23 other high schools all presenting one-act plays.

Yes, I remember . . . 1955 as a very successful, happy and eventful year and most of all . . . for it is impossible to forget . . . the DUFFEE



Left to right: J. Hopkins, L. Spiro, J. Buckley, N. Rodgers.

DER DEUTSCHE VEREIN **(German Club)**

The German Club, known officially as Der Deutsche Verein, has a membership of 58, all of whom are studying or have studied German.

Meetings consist of guest speakers, slides of Germany, discussions, German music, and socials.

The German Club has always striven to develop an interest in all things of German origin. Each year the club sponsors an exhibit in the library corridor in which we display German books, coins, stamps, toys, clothes, china, steins and posters.

Officers for the year were Lionel Spiro, president; Joan Hopkins, vice-president; Nancy Rodgers, secretary, and Janet Buckley, program chairman.

Miss Marie V. Shalloo is faculty advisor.



Left to right: C. Wishart, C. Kay, D. Dixon, M. Dickinson, J. Baldyga.

HEALTH CLUB

The Health Club is the organization which aids in promoting habits of good health among the students.

Although its membership is limited to the sophomore class, the whole school benefits from its projects.

Our main project was held during "National Dental Week." Our program of activities included an assembly at which Dr. Isserlis was guest speaker. His talk on the care of the teeth stressed the correct use of brushes and dentifrices and frequency of visits to our dentist. The different types of equipment available to dentists were then explained.

The Health Club also sponsored a display in the library corridor consisting of models of teeth, posters, and dental instruments obtained through the courtesy of Dr. Isserlis, the Massachusetts Dental Society, and the American Dental Association. An account of this project, written by Dr. Isserlis, later appeared in the monthly publication of the Massachusetts Dental Society.

The officers of the club were Maureen Dickinson, president; Joan Baldyga, vice-president; Cynthia Kay, secretary; Carole Wishart and David Dixon, councillors.



Left to right, seated: J. Drewniak, E. Griffin, J. Winick, D. Pavao. Standing: J. Sowersby, P. Hurley, B. Costa, S. Swidey, F. Drayton, V. Lawton, R. Krasnow, J. Masson.

HILLTOP

This year has completed the 33rd year of Hilltop history.

Following the tradition that was set in 1922, the Hilltop staff has endeavored to keep the student body up-to-date on news, sports, student opinion and social news and happenings.

In addition to this, Durfee's bi-weekly publication has given its staff an opportunity to put their ideas into print and try their hands at that ever growing field of journalism.

Durfee is one of the very few schools in New England that has a journalism course in its curriculum. This training has proved invaluable.

This year's staff has included Janet Winick, editor-in-chief; Eileen Griffin, business manager and "Dig This"; Sam Swidey, news editor and "From Me to You"; Fred Drayton, sports editor; Beverly Costa, "Dig This"; Joan Drewniak and Rhoda Krasnow, "Roving Reporter"; Verna Lawton and Dorothy Pavao, "Meet the Kids"; Janet Masson, "As We See It"; and Priscilla Hurley and Jean Sowersby, "Kampus Kapers."

John T. Crowley is faculty advisor.



Left to right: R. McDonald, S. Drewniak.

HOME ROOM DIRECTORS

The Home Room Directors organization is the largest and one of the busiest groups in the school. Pupils elected from home rooms make up its membership.

Early in the year, each home room chooses a boy and a girl director from those who are scholastically eligible. Throughout the school year, these students aid in the activities of the room itself, helping to check the attendance and reading the morning bulletin, and in the activities of the whole school through the sale of tickets and pencils, and in the presentation of information of general interest to the student body.

The directors have a special assembly at the close of the school year presided over by its officers. This year the president is Stanley Drewniak and the vice-president-secretary, Raymond McDonald.



Left to right, first row: L. Felix, J. Bowers, B. Estrella, S. Sokoletsky, B. Jamoulis, I. Goldberg, N. Ellis. Middle row: T. Davis, G. Durand, A. Oliveira, D. Maltais, B. Mello, J. Fonseca, R. Lagasse. Top row: C. Patten, J. Schwartz, D. Harrington.

LIBRARY AIDES

This is primarily a service group, organized to encourage an interest in good reading and to make it possible for one librarian to service a large number of pupils each day. Members are selected from the Principal's List and the All-A honor roll on the recommendation of the library aides in service and as approved by the librarian. This method of selection has preserved the dignity and honor of membership in the group. Each aide is provided an opportunity to cultivate his knowledge of literature and fine art by working a short time each week in the cultural environment of carefully selected books and periodicals.

Among the duties of the library aides are the handling of the passes, assisting the librarian with the books, and helping pupils find material. The many and various activities of the organization include participating in the Book Week Celebrations, giving radio talks on books, submitting book reviews to the Hilltop, and arranging the library and corridor displays. The latter are especially popular at Christmas time and during book week. The social affairs include assemblies, a Christmas party, lectures, teas and picnics.

Members not appearing in the photograph above are Electra Vaxivanos, Sandra Schwimmer, Robert Kitchen, Edward Mellor, George Shediack and Ernest Bedard.



Left to right, seated: M. Yoken, C. Kaleski, D. Trainor. Standing: A. St. Ours, A. Santos, B. Jardin, L. Ayash.

LITERARY CLUB

The Literary Club encourages creative writing. The members aim at improving their own style by criticizing each other's work. Many students have taken advantage of this interesting club, and now have important jobs in the field of journalism and other jobs that require skillful writing.

The president of the club this year is Lorraine Ayash; the vice-president, Melvin B. Yoken, and the secretary, Alice Santos.

The faculty advisor is Miss Katherine F. Lomax.



Left to right: K. Palmer, W. Stewart, C. Yankopoulos.

MATHEMATICS CLUB

You dislike Mathematics do you? It's obvious that the only thing for you to do is to join a Mathematics Club. Sounds paradoxical, does it? Well, see if the following won't change your mind:

A group of Durfee students who had an interest, or who had the desire to acquire an interest in Math, met at the first meeting of the year. Among those present were most of the outstanding students in the school, both socially and academically. Seven brave souls volunteered to be chairmen of the various monthly meetings, not knowing what to expect, and later discovering that it was both simple as well as lots of fun.

As the year progressed, practically all of the same faces which were seen at the first meeting appeared over and over again, leaving every meeting either feeling smug for having picked an answer out of nowhere, or feeling brilliant at being able to tell you in how many ways a family of ten could sit at dinner, and the probability of your winning a horse race.

To add a little color, during the fall, the club had an exhibit in the library corridor. This was under the direction of Mr. Joseph D'Adamo, the faculty advisor, who always managed to provide "the push in the right direction."

Finally, there came the highlight of the entire season, the Mathematics Tournament.



Left to right: G. Miller, A. Golembewski, M. Ginsberg.

NATIONAL HONOR SOCIETY

Mu Kappa Delta Chapter of the National Honor Society is the one club that pupils may not choose for themselves. Membership depends on the place of a pupil in his class, junior or senior year, and his rating in three other qualities: service, leadership, and character.

Activities of the chapter include an impressive induction ceremony held in the spring, and a coffee hour which is held in the earlier part of the school year.

This year the officers are President George Miller, Vice-President Ann Golembewski, and Secretary Michael Ginsberg. The faculty advisor is Miss Mildred V. Carroll.



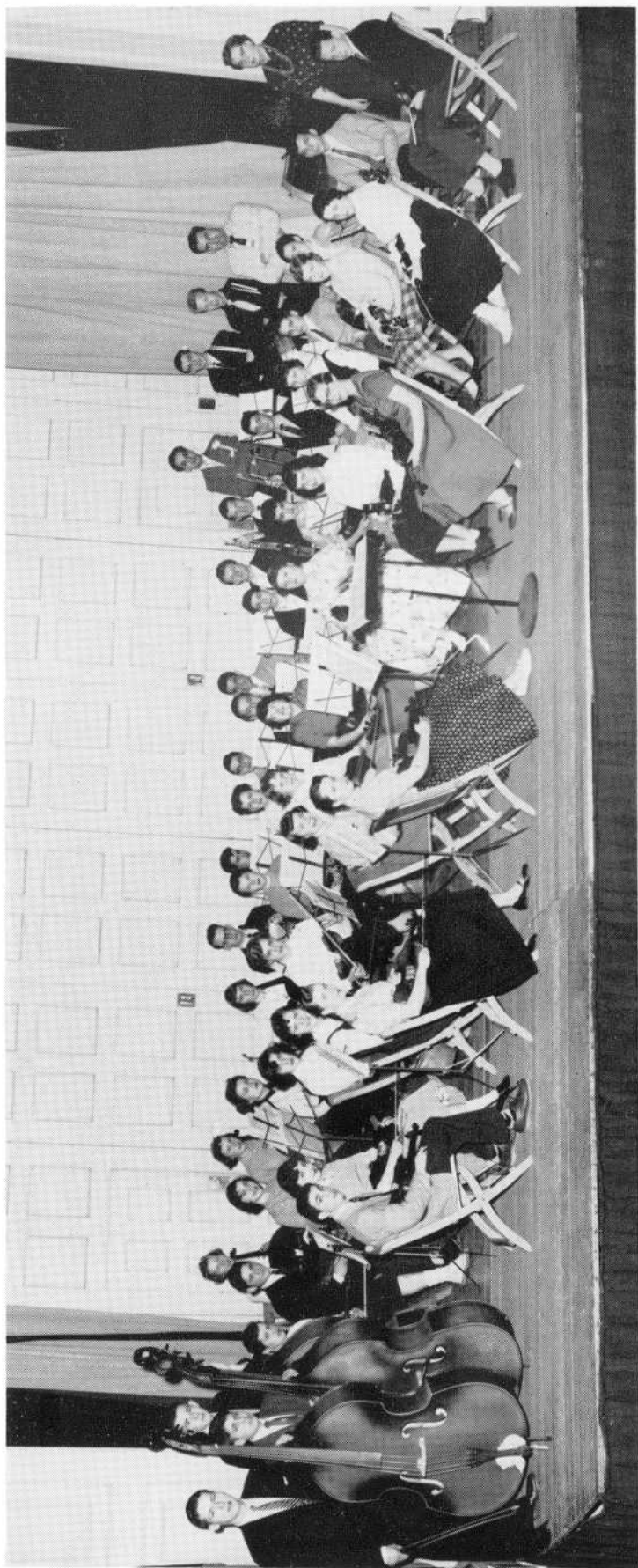
Left to right, first row: B. Medeiros, M. Medeiros, M. Andrade, D. Souza, D. Franco.
Second row: L. Vital, L. Mello, J. Marques, S. Camara, R. Ricardo.

PORTUGUESE CLUB

The Portuguese Club strives to acquaint the Portuguese students with their environment and at the same time to furnish functions with students of their native lands. It also aims to educate its members in the extensiveness and importance of the resources controlled by the Portuguese speaking people concentrated in South America and Africa. This unit has been very active on the campus and has generally met with success in all its ventures. It shows signs of becoming one of our most active and progressive organizations. Large membership is composed of past and present students of the Portuguese classes.

This club annually conducts a general assembly together with an exhibit of Portuguese customs and works. It is with great pleasure that we contribute this to the many S.A.A. Activities.

Mr. Antone Serpa is faculty advisor.



ORCHESTRA

The orchestra is one of New England's outstanding school orchestras and one of the few high school orchestras with complete instrumentation.

The full orchestra plays for big assemblies, the Christmas Concerts, Spring Concerts and Commencement programs. There are several ensemble groups composed of players from the big orchestra. We have a Freshman-Sophomore Ensemble, a Junior-Senior Ensemble, String Trio, String Quartet, Chamber Music orchestra and Trumpet Trio. They play for many community affairs.

Members of the orchestra have participated in the Bristol County Orchestra in New Bedford and the All-State Orchestra in Symphony Hall, Boston.

The orchestra as a group attends a Boston Symphony Rehearsal and a Boston Pops program.



Left to right, front: J. Masson, N. Cooperstein, D. Bernstein. Rear: R. Lagace, S. DeBonis.

JUNIOR RED CROSS COUNCIL

The Junior Red Cross throughout the city of Fall River is a very active organization. The council at Durfee is no exception. This year the council was advised by Miss Mary Yankopoulos.

Our first project was to elect a new slate of officers. They were Robert Lagasse, president; Sylvia De Bonis, vice-president; Diane Bernstein, secretary; Janet Masson, treasurer; Nancy Cooperstein, councillor-at-large.

Sylvia De Bonis, Nancy Cooperstein and Robert Lagace had the privilege to represent Durfee at a chapter-wide Junior Red Cross Council. At this meeting, Nancy Cooperstein was elected president, and Sylvia De Bonis was elected recording secretary and public information secretary. The structure of the Junior Red Cross in all the schools of this area is outlined through this council.

As soon as our group was organized we held our enrollment drive and approximately 1,000 Durfee students became members.

One of the first activities initiated in the fall by the Junior Red Cross was a Junior's Aid Program in which many Durfee girls acted as Nurses' Aides in our local hospitals.



Left to right, first row: C. Golz, M. Silvia, M. Nawrocki, A. Shea, E. Piche, J. McCallum, E. Arruda. Middle row: J. Baldyga, E. Lyons, S. Drewniak, J. Fazio, J. Winick, H. Davis, S. Avramides, T. Davis, M. Dickinson. Top row: D. Smith, A. Abraham.

SANITATION COMMISSION

Durfee is very proud of its clean and healthy cafeterias, classrooms and campus. Much of this cleanliness is due to the efforts of the Durfee Sanitation Commission, better known as "Sanco."

The commission is comprised of the president and vice-president of the Student's Activities Association and of each of the four classes. Also serving on the commission are the president of the Home Room Directors, editor of the Hilltop, and the officers of the Health Club. These people act as a jury which determines the tasks to be assigned to students who disobey Sanco rules.

Sanco's main purpose is to make students aware of the necessity for healthful conditions in and around the school.

It is through the leadership of Miss Angelina B. Crispo, faculty advisor, that the goals of the commission have been reached.

This year's officers are President Anne Shea, Vice-President Helen Davis and Secretary Geraldine Pacheco.



Left to right, first row: N. Hartley, W. Stewart, G. Hicks, B. Yankopoulos, M. Ginsberg, B. Estrella, P. Estrella. Middle row: R. Janson, L. Hobson, S. Sokoletsky, J. Winick, B. Costa, J. Proulx, S. Schwimmer, L. Hicks, R. Lagace, C. Winegard. Top row: C. Patten, D. Terry, C. Yankopoulos, G. Coutroubis, L. Cohen, T. Kuliopulos, J. Dashoff, G. Faris, J. Sampson.

SCIENCE CLUB

Following a two-year lapse, the Westinghouse Science Club was reorganized in 1950. Early in the season the members heard lectures by visiting experts in different scientific fields. On several occasions club members gave demonstrations of various projects in an attempt to explain certain scientific phenomena. Numerous experiments were conducted for similar reasons.

During the spring the members worked to complete and perfect their individual and group projects. Various points of scientific interest were visited during this time.



Left to right, first row: E. Castanho, R. Liss, L. Winslow, R. Hillman, D. Bernstein, K. Palmer, A. Vieira. Middle row: P. Sullivan, J. Park, G. Owen, R. Krasnow, J. Dashoff, I. Sharkansky, J. Kane, L. Olsen, R. Tinkoff, I. Farinha, I. Goldberg, A. Souza. Top row: H. Solinsky, B. Weinstein, C. Weingard, E. Uditsky, B. Jamoulis.

SPANISH CLUB

The Spanish Club has now been in existence for two years. It is open to all pupils who take Spanish.

The main purpose of the club is to give students a better knowledge of the customs of Spanish-speaking countries.

This year the club voted to award a Spanish dictionary to the winner of a contest about Brazil. It also voted to defray the expenses of Durfee's contestant in a Spanish speaking contest sponsored by the Pan American Society of New England. Gil Corte and Joel Kane were chosen to represent Durfee in the contest.

The club officers for this year were Robert Hillman, president; Lois Winslow, vice-president, and Diane Bernstein, secretary.



Left to right, first row: M. Nawrocki, A. Carrier, C. Gesner, A. Golembewski, C. Yankopoulos, W. Durfee. Middle row: S. Sokoletsky, G. Callahan, B. Jamoulis, J. Winick, L. Cornell, L. Spiro, W. Reilly, J. Moore, L. Wolpert, M. Ferreira. Top row: T. Kuliopulos, J. Fazio, D. Sullivan, R. Hillman, D. Smith, R. Andrews, D. Dixon.

SPEAKERS BUREAU

1955 proved to be a most active and enjoyable year for the Speakers' Bureau. This organization had many functions throughout the school year, one of which was the awarding of the prize to the winning team of the annual Senior Debating Tournament.

Members of this organization were honored in that each gave at least one speech, either at regular meetings or to an outside adult audience. Various adult organizations extended invitations to attend lectures given by nation-wide popular lecturers. These offers made the members appreciate the value of public speaking and its extensive uses, this being the club's main objective.

Miss Elizabeth Leonard is faculty advisor. The officers, elected by members, were Charles Gesner, president; Ann Golembewski, vice-president; Anne-Marie Carrier, secretary. Public relations were handled by Charles Yankopoulos. The standing committee included Sam Swidey, Charles Yankopoulos and Lionel Spiro. Publicity was handled by Janet Winick.



Left to right, front: E. Springer, H. Majewski, R. Arruda, M. Gryncewicz, J. Marques. Rear row: A. Boyer, H. Curran, J. Bottomley, R. Bernard, M. Beaulieu, K. Hint, W. Desrosiers, W. Smith, J. Alosi, J. McDonald.

TRAFFIC SQUAD

Precaution is taken to insure the safety of the pupils at Durfee throughout the entire day.

A sign properly inscribed is placed in the middle of Rock Street at Cherry to divert traffic from the area between the two buildings during the passage of classes. Members of the Traffic Squad place this sign at this post before the end of each period. They take it in after the following period begins.

The opening and closing of the Rock Street doors of the Technical Building is another function of this organization.

In short, the Traffic Squad does its part to see that pupils pass between the two buildings without unnecessary loss of time and with due regard for the safety of all.



Left to right, seated: L. Winslow, D. Oliveira. Standing: R. Duffy.

WORLD HISTORY CLUB

The World History Club was founded in the spring of 1954. Its purpose is to increase the interest and the knowledge of the students in world affairs of yesterday and today. The club affords students an opportunity to participate in activities, to hear speakers, and to become increasingly aware of their world citizenship and of attending responsibilities.

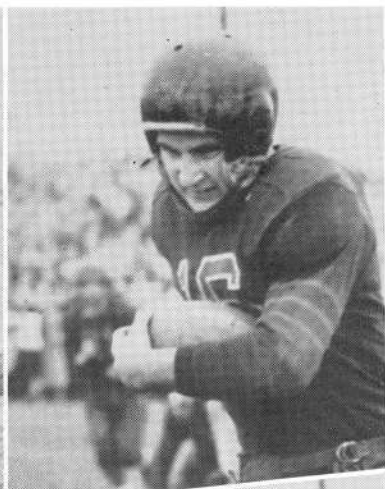
The young club has had an auspicious start with a large membership of 84 students and a good number of activities to its credit, the highlight being a trip to the United Nations' Headquarters in New York City. This trip is to become an annual affair.

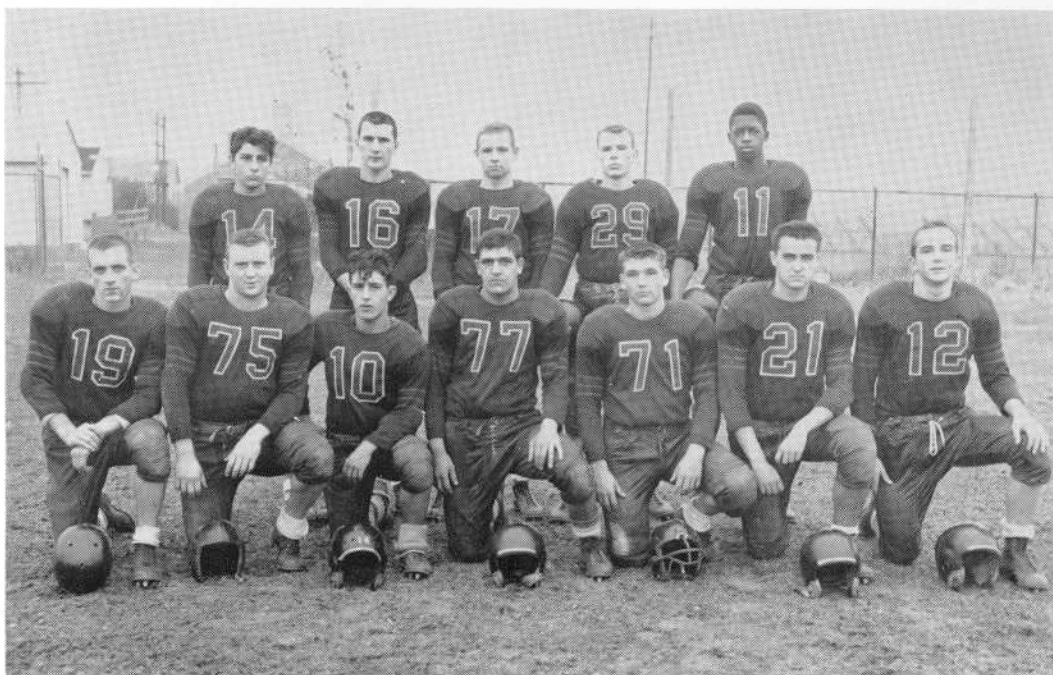
The club set up two colorful exhibits in the library corridor of the school, one in honor of the United Nations during UN Week in October, and the other in honor of the American Civil War and Abraham Lincoln during the week of Lincoln's birthday in February.

Mr. Herve B. Lemaire is faculty advisor.

Sports







Left to right, line: J. Britland, D. Priestner, E. Botelho, A. Abraham. S. Drewniak, D. Harrington, P. St. Armand. Backs: J. Occhiuti, C. Gesner, J. Cronin, J. Starkie, F. Drayton.

FOOTBALL

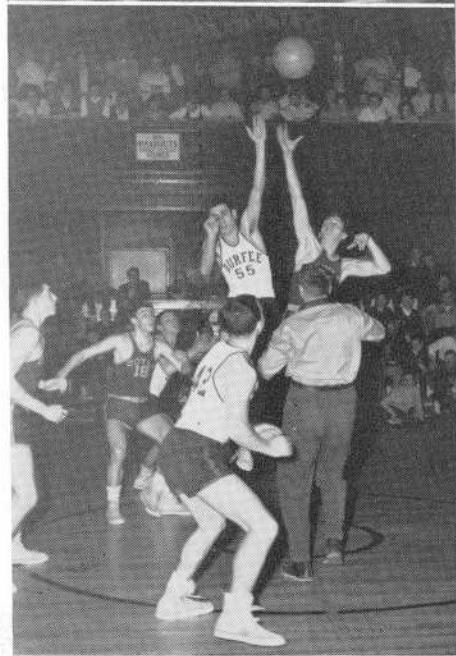
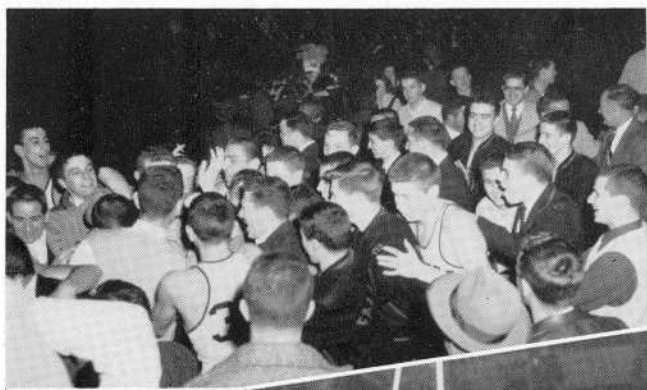
As we reminisce over the performances of the 1954 football team we find that the Hilltoppers compiled a modest 4-4 record including a victory over Coyle and their third triumph in four years over New Bedford. The season's record is as follows:

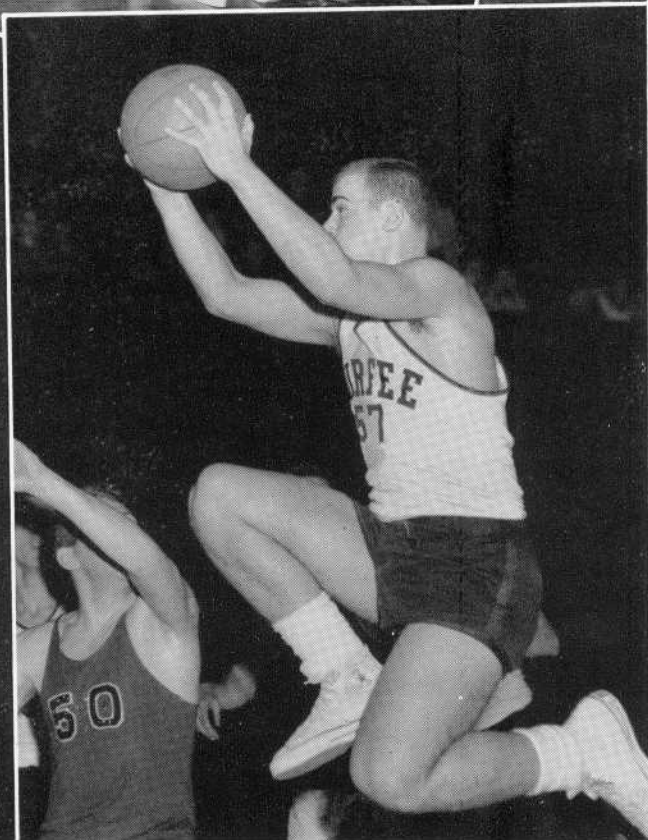
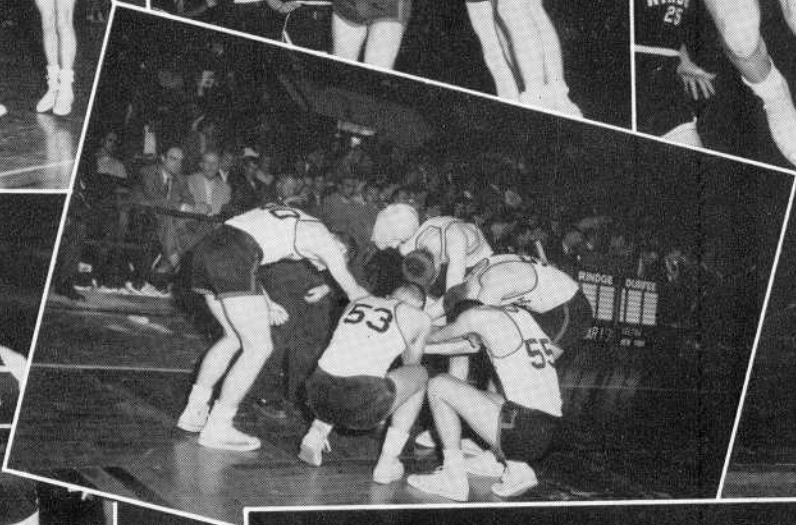
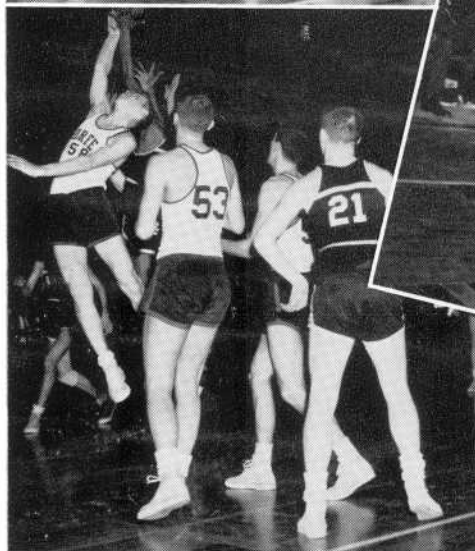
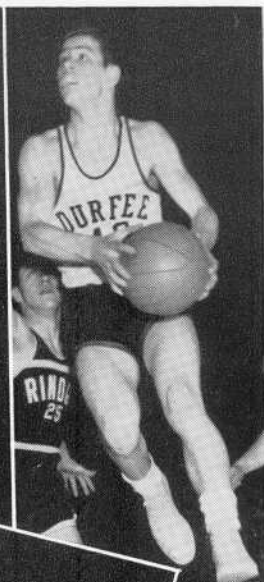
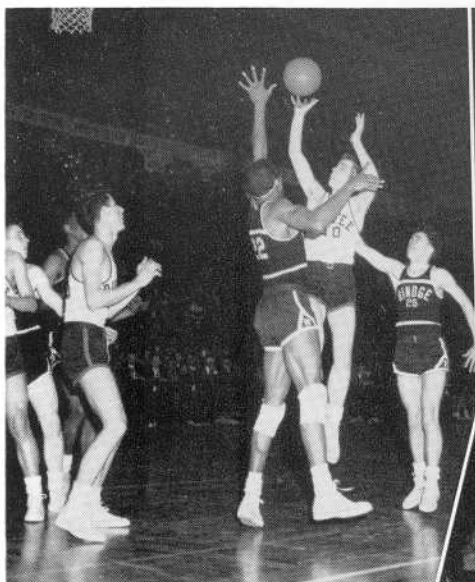
Durfee 7, Attleboro 20; Durfee 0, Providence Central 7; Durfee 18, New Bedford Vocational 0; Durfee 6, Fairhaven 0; Durfee 18, Wareham 40; Durfee 6, Taunton 13; Durfee 20, Coyle 7; Durfee 14, New Bedford 6.

Plagued by injuries, the team got off to a slow start and through most of the season was rarely at full strength. By actual count the Red and Black lost only two contests to their opponents when all men were available for action . . . tough luck in a tough season. The lettermen included:

Anthony Abraham, Eugene Botelho, John Britland, Robert Crawford, John Cronan, Fred Drayton, Stanley Drewniak, Antonio Fonseca, Russell Gibson, Daniel Harrington, Donald Klimka, John Litos.

Raymond McDonald, Raymond McGough, Howard Miller, Joseph Occhiuti, Richard Pires, Paul St. Armand, Aaron Sanft, James Skelly, James Starkie, George Sullivan, Charles Walker and Manager David Smith.





BASKETBALL

The 1954-1955 basketball team carried on the fine traditions of Durfee in that sport by deadlocking New Bedford for the Bristol County Championship and competing in the Massachusetts Interscholastic Tournament at Boston Garden, for the eleventh straight year.

The Hilltoppers lost to New Bedford Vocational and New Bedford on their home courts but topped all other opponents by comfortable margins.

At the Garden Coach Urban's boys won a thrilling victory over Rindge Tech in the quarter-finals but lost to a powerful Quincy quintet on the following night. The latter game was reminiscent of a contest played between these same two teams at the Garden in 1951, which the Granite City boys also won.

John Hathaway, George Miller, Albert Attar, Jim Caldeira and Mike Drewniak comprised the Red and Black's starting five with Richie Correllas, Russ Gibson and Tommy Arruda seeing plenty of action.

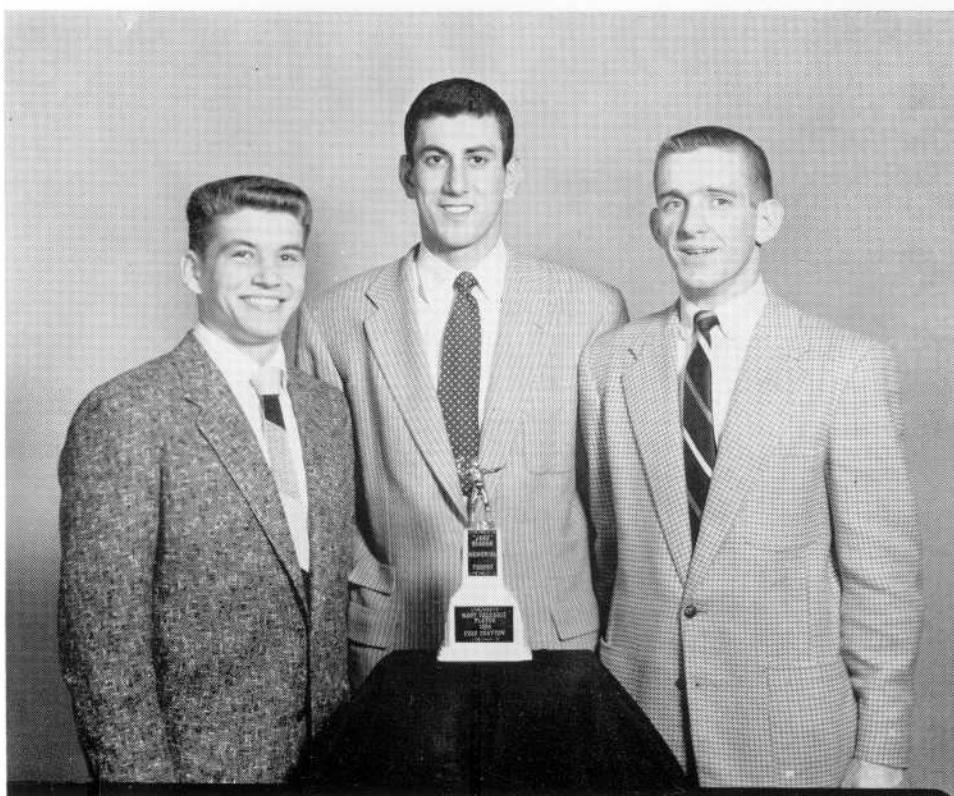
In the years to come Durfee fans will be able to look back and beam over the fine performances of the '55 team. Their efforts both in ability and sportsmanship, which are so much a part of the Durfee tradition, will never be forgotten.

SPRING SPORTS

The Record Book deadline for copy, April 1, precludes any summary of Durfee's activities in baseball, track, tennis and golf. The sports staff of the book is therefore limited to predicting that our school and its athletes will give a good account of themselves when the outdoor program gets under way.

As in football and basketball, the Class of 1955 has given Durfee outstanding competitors in all these sports and their efforts have added many illustrious pages to the school's long and glorious athletic history.

May they be as successful in '55 as they have been in previous years!



Left to right: S. Drewniak, A. Attar, J. Britland.

VARSITY CLUB

The Varsity Club is exclusive for those who have received a letter in one of the following sports—football, basketball, baseball, track, golf and tennis.

Each year at the football banquet sponsored in December by the S.A.A., the club awards to the outstanding player The Jake Reagan Memorial Trophy. This year's recipient was Fred Drayton.

As usual in the spring the club members presented their annual Varsity Show under the direction of Miss Marie V. Shalloo and Mr. Joseph B. D'Adamo. The show ran three nights instead of the customary two nights, with the proceeds of the first performance being given to the Charles V. Carroll Scholarship Fund. From the rest of the proceeds jackets were purchased for the club members.

The officers are President John Britland, Vice-President Stanley Drewniak and Secretary Albert Attar. Coach Luke Urban is faculty advisor.



Left to right: P. Campos, P. Rapoza, A. Leary, C. Wishart, J. Farias, N. Holt, B. Makuch, C. Rioux, J. Freitas, N. Ellis, J. Schneider, G. Ferreira, C. Kay.

GIRLS' VARSITY BASKETBALL

Ten schools in the Narry League sponsor girls interscholastic basketball. This year the Durfee schedule comprised nine games plus a Sports Day meet at Barrington High School.

The city-wide basketball clinic ushered in the season. Then Durfee went on to capture the Greater Fall River championship, and succeeded in winning the Narry League title by defeating New Bedford Voke in the final playoff.

Ann Leary was high scorer with 172 points, followed by Judy Schneider with 74. Captain Barbara Makuch with her teamwork and skill contributed greatly toward the team's success.



Left to right: J. Schneider, J. Farias, C. Kay.

GIRLS' NUMERAL CLUB

The Girls' Numeral Club, under the direction of Miss Virginia Frost, is an organization which improves and encourages athletics among girls.

The club is composed of 60 girls from the junior and senior classes. Girls are chosen for their athletic ability, qualities of leadership, willingness to work and dependability. In order to remain in the club a member must earn four stars. These are given for committee work, gym leading, and participating in active sports such as volleyball, basketball, badminton, bowling and softball.

This year's activities also included many social events. In the fall the club held a "splash party." The members also attended the annual alumni reunion at which square dancing was enjoyed. A Sports Day was sponsored by the Numeral Club for the freshmen girls throughout the public school system. A sophomore basketball tournament was also held. In the spring members enjoyed themselves at the annual outing.



Left to right, kneeling: B. Sundel, C. Bates, L. Higgins. Standing: R. Kaplan, J. Delaney, G. Pacheco, S. Cohen. Inset: S. Nulman.

CHEERLEADERS

The cheerleading squad, consisting of four seniors and four juniors, has been active at all football and basketball games during the past year. Attired in red skirts and white sweaters during football season, changing to black and red woolen outfits for basketball games, the girls led the cheers for the team, at the same time entertaining the spectators with their intricate formation. The highlight of the year as usual was their several appearances at the Eastern Massachusetts Tournament at Boston Garden.

To be selected as a cheerleader is the ambition of many Durfee girls. Each year in the spring tryouts are held for sophomore girls, all of whom must have had passing marks for the third term. A trio of outside judges, selected by the principal, chooses the four finalists who then serve on the squad during their junior and senior years.

Faculty advisor is Miss Marie V. Shalloo.



Front: G. Dobson. Left to right: J. Greenwood, M. Dickinson, C. Trepanier, M. Lemerise, L. Taylor, M. Ellis, H. Davis.

MAJORETTES

The Majorettes are comprised of eight girls who are chosen by tryouts in the spring of each year. They appear at the football games with the band and in many other functions such as parades and at Boston Garden. This year they also appeared at St. Anne's Auditorium in a Brotherhood Program.

Another event that is looked forward to with enthusiasm is the Southeastern Massachusetts Music Festival where they compete with majorettes from different schools throughout the State. At the football banquet each girl received a D with baton insignium for her work during the year.

ACKNOWLEDGEMENT

To all who have contributed their assistance in compiling this, our 1955 Record Book, we of the staff express our deepest thanks. Indeed, our attempt to publish this book would be fruitless without the combined efforts of so many. Realizing this, we are sincerely grateful to the following:

First, our classmates, for their prompt action regarding glossies and information.

Second, all officers and faculty advisors of the many clubs, for submitting group pictures and copy concerning their organizations.

Third, all photographers, printers, engravers and binders, for their fine workmanship and just dealings with us.

Fourth, the Fall River Herald News for their contributions of photographs of our athletic teams, activities and other organizations.

Finally, and especially, our two very wonderful faculty advisors, Miss Katherine L. Hogan and Mr. John T. Crowley, who by their untiring efforts, guidance and aid, have made it possible for us to accomplish our task of producing the Record Book.

SUCCESS

TO THE CLASS OF 1955

LORING STUDIOS

392 SPRING STREET

Opposite St. Mary's Cathedral

Telephone 8-5022

**BEST OF LUCK
TO THE
CLASS OF 1955**

**Fall River
Textile Manufacturers Association**

ALPHA CHAPTER

Tri-Hi-Y Club

President Louise Souza
Vice-President Margaret Henry
Secretary Maureen Dickinson
Treasurer Janet Greenwood
Chaplain Katherine Sullivan

SENIORS

Judith Davis	Gloria Gagnon
Patricia Donnelly	Gertrude Hargraves
Joan Drewniak	Janet Masson
Judith Farias	Irene Perry
Jacqueline Freitas	Elaine Souza

JUNIORS

Eileen Almeida	Jean Lenhart
Sylvia DeBonis	Geraldine Pacheco
Dorothy Hannon	Nancy Reis
Joan Hopkins	Jean Wilkinson

Jeannette Wood

Club Advisor Mrs. Joseph Nestor

BEST WISHES
SATURDAY NITE CLUB

President Richard M. Souza
Vice-President Shirley Boothroyd
Secretary Elaine Souza
Treasurer Nicholas Pannoni

Elaine Caron	Geraldine Pacheco
Beverly Costa	Anita Prazelor
Louis Cyr	Paul Plante
Joan Delaney	Nancy Reis
Joseph Fazio	Richard Rounds
Donna Fitzgibbons	Patricia Sullivan
Jacqueline McKay	Albert Travers
Thomas Medeiros	Shirley Wheelock
Barry Nestor	Francis Wilson

HONORARY MEMBERS

Joan Baldyga Dale Golz
Carol Skelly

Hi-Y

President David Smith
Vice-President Robert Bogle
Secretary Robert Crawford
Treasurer George Miller
Chaplain Joseph Fazio

John Britland	Charles Gesner
John Cronin	Howard Miller
Raymond McDonald	Stanley Drewniak
Albert Attar	Myron Drewniak
Anthony Abraham	Richard Souza
Richard Rounds	Albert Travis
James Caldeira	Daniel Harrington
James Carey	John Hathaway
John Litos	Barry Nestor
Raymond Longshaw	Kenneth Aguiar

Dennis Angelini

GAMMA CHAPTER

Tri-Hi-Y

President	Grace Dobson
Vice-President	Lorna Taylor
Secretary	Joan Delaney
Treasurer	Dinah Nobrega
Chaplain	Patricia Smith

Senior Members

Frances Buba	Janet Park
Susan Cohen	Nancy Reed
Beverly Costa	Joan Sherman
Geraldine Dolinsky	Nancy Stone
Cynthia Kay	Lois Winslow

BETA CHAPTER

Tri-Hi-Y

President	Joyce Boudreau
Vice-President	Carolyn Driscoll
Secretary	Joan Baldyga
Corresponding Secretary	Cynthia Bates
Treasurer	Jean Baldyga
Chaplain	Shirley Boothroyd

Senior Members

Judith Bolen	Joan Fox
Lorna Coffey	Louise Kalif
Ida Cunha	Elaine McCarthy
Gertrude Ferreira	Joan Paiva
Patricia Fitzgerald	Claire Ross
Donna Fitzgibbon	Rosalind Theriault

CONGRATULATIONS

to the

CLASS OF 1955

DURFEE HIGH BOOSTERS CLUB

Organized — 1954

BEST WISHES FROM YOUR FELLOW CLASSMATES

VIVE AND AMICI

VIVE

AMICI

Cynthia Kay	President	James Newton
Janet Park	Vice-President	Raymond Longshaw
Nancy Draper	Secretary	James Sampson
Lois Winslow	Treasurer	Robert Allcock

Compliments of
WALTER C. FRAZE CO.

Complete
Athletic Outfitters
for
Durfee High School

9 NORTH MAIN STREET
FALL RIVER

Compliments of

FIDAMIES

President Patricia Smith
Vice-President Ann Hadfield
Secretary Carolyn Sampson
Treasurer Carole Wishart
Chaplain Carol Smith
Assistant Secretary Marilyn Hanson
Assistant Treasurer Donna Rae Anderson

Members

Grace Dobson Eleanor Mayall
Priscilla Hurley Mary Mullen
Dorothy Linley Janice Nichols
Betsy Longshaw Nancy Reed
Jean Wilkinson

Compliments of

R. A. McWHIRR CO.

169 SOUTH MAIN STREET

Fall River's

Largest Department Store

Compliments of

FALL RIVER HERALD NEWS

SUCCESS
TO ALL THE
GRADUATES

CREAMRICH

1091 COUNTY STREET
SOMERSET

THE BRIDE'S SHOPPE

518 SOUTH MAIN STREET

Be sure to visit our
"FORMAL NOOK"

Exquisite
Selection

For Proms \$14.95 to \$49.95

Compliments of

CHERRY & WEBB COMPANY

149 SOUTH MAIN STREET

Fall River's

Leading Fashion Store

COMPLIMENTS

OF

HOTEL

MELLEN

Compliments of

KAPLAN BROS. FURNITURE COMPANY

139 PLEASANT STREET

Telephone 6-8571

Compliments of

Kapa

President Lois Cornell
Vice-President Rhoda Kaplan
Corresponding Secretary Diane Bernstein
Recording Secretary Anita Myerson
Treasurer Sonya Sonion

CONGRATULATIONS

CLASS OF '55

Bonner Flowers

John R. Bonner

Robeson Street

Telephone 5-7801

Sam Hall's

Music Store

169 North Main Street

"Everything for the Music Lover"

Your Hobby & Craft Shop

422 South Main Street

"Dave" Turner, Prop. Dial 5-7376

Southern New England's

Most Complete Stock of

Hobby and Craft Supplies

Compliments of

Besse-Russell's

221-223 South Main Street

Tel. 9-6191 Evenings by Appointment

Robert's Fur and Formal Shop

FULL DRESS RENTAL SERVICE

White Tuxedo Jackets — Tuxedo

Tail Coats — Cutaways
and All Accessories

398 Spring Street

Opposite St. Mary's Cathedral

Henry J. Feitelberg

INSURANCE

and

TRAVEL

29 No. Main St. Fall River
Tel. 5-7408

Compliments of

J. Arruda's Service Station

69 Hunter Street
Fall River, Mass.

Tel. 3-2973

Compliments of

Scotties

President Florence Sincoski
Vice-President Geraldine Pacheco
Secretary Eileen Galego
Treasurer Joan Delaney

LOUISE WATERMAN WISE CHAPTER

B'ngai B'rith Girls

President	Shirley Sokoletsky
Vice-President	Marion Appel
Recording Secretary	Lynne Harber
Corresponding Secretary	Melba Kuperschmid
Reporter	Sheila Geffen*
Sergeant-at-Arms	Esta Uditsky
Monitress	Irma Schwartz*

* (Not at Durfee)

Compliments of

Wolf's Jewelers

150 South Main Street
Fall River, Mass.

Tel. 3-8333

Jay-Vee's Auto Top

AUTO SEAT COVERS
CONVERTIBLE TOPS

Auto — Truck — Boat
Restaurant Upholstering

183 Durfee Street
Fall River, Mass.

John Viveiros

Touhey's Pharmacy

Arthur J. Shea, Reg. Pharm., Prop.

202 Rock Street

Fall River, Mass.

Prescription Specialists Since 1883

Robert A. Wilcox Co.

22 Bedford Street

STATIONERY
SCHOOL SUPPLIES

Compliments of

Shore's Market

Compliments of

A Friend

PICTURES, MIRRORS and GIFTS
Greeting Cards for All Occasions
FINE PICTURE FRAMING
ELLSAS ART STORE
364 South Main Street

Compliments of
WILLARD D. GILBERT
INSURANCE BROKER
REAL ESTATE
"There's no place like Home...when it's safe"
Tel. 3-6871
308 Academy Building Fall River, Mass.

Compliments of
FREITAS OIL
426 Hope St.
Tel. 3-2973

Compliments of
HIGHLAND FIVE TO \$1.00
801 Robeson St.
"Easy Parking"

Compliments of

**Modern
Furniture Company**
376 South Main Street

Telephone 6-8291

"Your Grand Rapids Furniture Guild Store"

Compliments of
Assistant District Attorney
JOHN J. HARRINGTON

Compliments of
ACADEMY THEATER

Compliments of
HERB'S KITCHEN
18 Market Street

HUTCHINSON'S ART SHOP
Raymond L. Hutchinson, Prop.
PICTURE, PICTURE FRAMING
ARTISTS' SUPPLIES
154 Second Street

WILFRED J. GINGRAS
GENERAL INSURANCE
330 Granite Block Tel. 6-8253

Compliments of
GRANITE BLOCK SPA



What's the meaning of this?

These queer shapes are halftone dots picked at random from a plate and greatly magnified. Seemingly insignificant, these microscopic dots are the prime concern of photo-engravers.

Their perfection is assured with Barbett engravings.

BARBETT PHOTO ENGRAVING CO., INC. • 86 PAGE STREET • PROVIDENCE 3, R. I.

Autographs

Autographs

