

# RECORD BOOK



**B. M. C. DURFEE HIGH**

FALL RIVER, MASSACHUSETTS



# D E D I C A T I O N

We, the Class of 1963, proudly dedicate our yearbook to Robert J. Nagle, former principal of B. M. C. Durfee High School. Every student has at some time profited from his superior guidance and marveled at his limitless patience. His compliance with many of the wishes and activities of the student body and his kindly disposition have made an impression which will last for years to come.

His attaining the highest position in the School Administration, that of Superintendent, has set a perfect example for the students of what reward hard work and perseverance will bring. Along with our wishes for his continued health and success we offer also our gratitude for the inspiration he has given us.

# FACULTY

## To The Class Of 1963:

The demands of society upon you, our high school graduates, have never assumed proportions of such magnitude. In a world of colonial upheaval, changing geography, and the problems caused by the advent of automation, yours is a most challenging future. It is my sincere belief you will be equal to the task because of the manner in which you have conducted yourselves while at Durfee. Not all of you can be leaders but you can be good followers. Choose your leaders wisely and continue to cooperate with them according to the precepts in which you have been indoctrinated, at home, in school, and in your religious training.

I congratulate you for your past performances and expect only the best from you in the future. May you continue to reflect honor upon yourselves, your families, and your school.

  
Principal

Daniel Kelly, *Vice-Principal*

Amasa F. Williston, *Vice-Principal*

Alice C. Harrington, *Vice-Principal*

Charles D. Smith, *Dean of Boys*

Yolande B. Laliberte, *Dean of Girls*

Thomas J. Walsh, *Assistant Director of Vocational Guidance*

Alecrim, Thomas  
Alves, Leonard G.  
Amiot, Helen G.  
Belmont, Carmi A.  
Bernier, Normand R.  
Berthiaume, Daniel  
Borden, Clinton A.  
Bradbury, William A.  
Brady, Thomas T.  
Burns, M. Dolores  
Carey, Edward F., Jr.  
Carfagno, Joan T.  
Carroll, Mildred V.  
Carroll, Nancy  
Cavaco, Gilbert  
Coady, William K.  
Conlin, James F.  
Crawford, Hannah L.  
Crispo, Angeline B.  
Crowley, John T.  
D'Adamo, Joseph B.

Dailey, Margaret G.  
Dallaire, Armand A.  
Delahanty, Edna U.  
Delisle, Gerard A.  
Dimock, Winifred A.  
Donnelly, Hazel M.  
Donnelly, James E.  
Doran, Margaret G.  
Downs, Edward B.  
Downs, Ruth H.  
Dubois, Roger H.  
Dunlop, Milton J.  
Dunn, Grace M.  
Ferris, Anne L.  
Fischer, Barbara  
Fitzgerald, Vincent M.  
Fletcher, Ralph J.  
Fortier, Conrad P.  
Frank, Arthur D.  
Frost, Virginia W.  
Gavigan, David

Goltz, Lenora G.  
Gosciminski, Chester J.  
Grandfield, Mary C. T.  
Harrington, Frederick J.  
Harrington, John J.  
Harty, Margaret M.  
Hathaway, Joseph R.  
Hogan, Katherine L.  
Hrinko, John J.  
Johnson, Louise S.  
Jordan, Frank J.  
Karam, Thomas E.  
Katersky, Evelyn M.  
Kay, Stephen R.  
Keefe, Margaret F.  
Kelley, Helena A.  
Kelly, George D.  
Kiley, John E., Jr.  
Kiley, Maureen F.  
Kostas, Mary Y.  
Lawlor, Joseph J.



LeComte, Dorothy G.  
 Leonard, Elizabeth L.  
 Lewis, Joseph W., Jr.  
 Lindquist, Frederick M.  
 Lynch, William F.  
 Machado, Edmond M.  
 Malmborg, Earl V.  
 Martin, Grace L.  
 McGowan, Owen T. P.  
 Medeiros, John  
 Mekelburg, A. Lincoln  
 Mendes, Charles  
 Montle, Donald F.  
 Montle, Joan B.  
 Nawrocki, Stephen  
 Newkirk, Ruth W.

Nobrega, Caesar  
 Nugent, William A.  
 Olivier, Rochelle H.  
 Pacheco, Lorena L.  
 Panos, James S.  
 Pelletier, James W.  
 Powers, Margaret H.  
 Powers, Raymond F., Sr.  
 Richard, Robert A.  
 Sanford, Elton H.  
 Serpa, Antonio A.  
 Shapiro, Mannis  
 Shea, Henry J.  
 Sheahan, Daniel  
 Smithson, Thomas  
 Sousa, Manuel

Sperduti, Dominick R.  
 Stavros, Angelo A.  
 Sullivan, Anna L.  
 Sullivan, Dorothy C.  
 Sullivan, Helena V.  
 Sweeney, Mary E.  
 Swidey, Samuel E., Jr.  
 Torphy, Marion L.  
 Tripp, Helen J.  
 Urban, Dorothy H.  
 Urban, Louis J.  
 Warren, Bertrand  
 Whalon, Margaret J.  
 Whitman, A. Wilson  
 Wolstenholme, Dorothy E.

### OFFICE STAFF

Anne T. Coughlin  
 Doris E. Dewsnap  
 Anna C. Harrington  
 Olga Hordovitch  
 Barbara A. Sullivan  
 Kathryn Lenehan

Senior Clerk-Stenographer  
 Senior Clerk-Stenographer  
 Senior Clerk-Stenographer  
 Clerk-Stenographer  
 Clerk-Stenographer  
 Clerk

---

### IN MEMORIAM



Mrs. Constance F. Murphy

# HALL OF FAME

## Ten Highest Ranking Seniors

JEREMIAH LOWNY

STEPHEN PERLMAN

STEVEN BLUMSTEIN

BEVERLY RAMOS

PRISCILLA CHAPMAN

GAIL SISSON

SYBIL COHEN

VINCENT SMERIGLIO

MARCIA GOLD

REBECCA TRIEFF

## President of Student Council

MICHAEL SULLIVAN

## President of the National Honor Society

STEPHEN PERLMAN

## President of the Home Room Directors

BARBARA DUCKETT

## Editor of The Hilltop

MICHAELINE PEREIRA

MOST POPULAR

Edward Berube

Ingeborg Costa

BEST LOOKING

John Bryan

Susan Ryerson

MOST DIGNIFIED

Jeremiah Lowney

Ingeborg Costa

MOST ATHLETIC

Robert Bonalewicz

Mabel Leite

CLASS WIT

Stephen Perlman

Barbara Borden

MOST INTERESTING

Michael Sullivan

Susan Ryerson

BEST ALL-AROUND STUDENT

Stephen Perlman

Priscilla Chapman

BEST SPEAKER

Stephen Perlman

Michaeline Pereira

MOST LIKELY TO SUCCEED

Jeremiah Lowney

Priscilla Chapman

**WHO'S WHO**

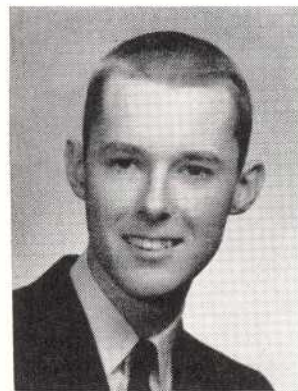
# S T A F F



MARGARET PICKERING  
Editor



PRISCILLA CHAPMAN  
Assistant Editor



JAMES M. HACKING  
Assistant Editor



JUNE CISEK  
Typist



MADALENA MANTEIGA  
Typist



THERESA OLIVEIRA  
Typist

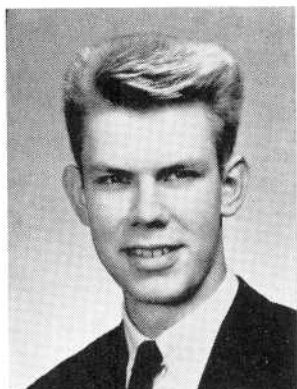




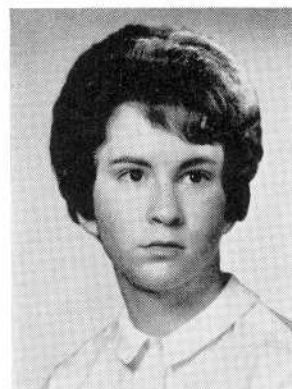
JUNE E. COOPERSTEIN  
Business Manager



EDWARD F. SZYNAL  
Sports Editor



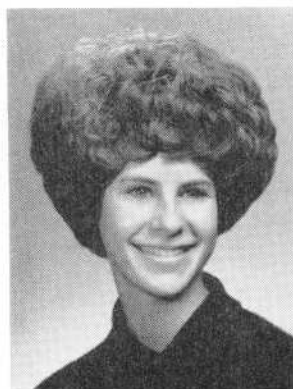
MICHAEL BEDNARZ  
Asst. Bus. Mgr.



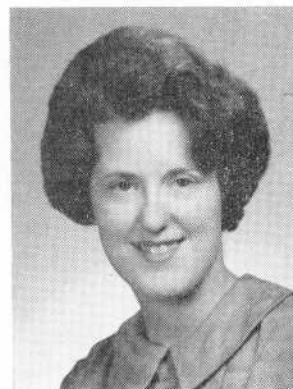
LISA B. ROTENBERG  
Asst. Bus. Mgr.



MARY ANN REIS  
Typist



SYLVIA SCHWARTZ  
Typist



JANE M. TURGEON  
Typist

# CLASS OFFICERS



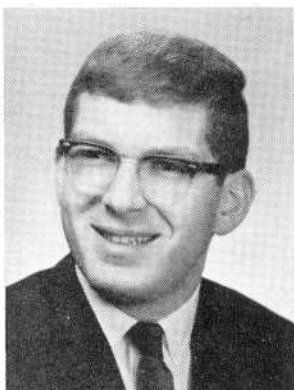
EDWARD BERUBE  
President



SUSAN J. RYERSON  
Vice-President



VIRGINIA SAURETTE  
Secretary

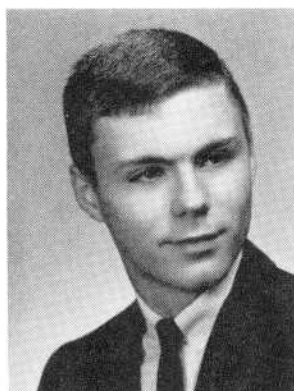


**GEORGE M. ABDOW**



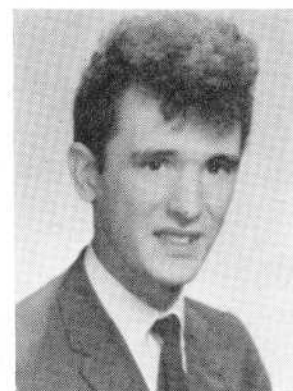
**PRISCILLA ANNE ADAMS**

Glee Club 2



**JEFFREY WILLIAM ADDISON**

Cross Country Team 2  
Track Team 2, 3, 4

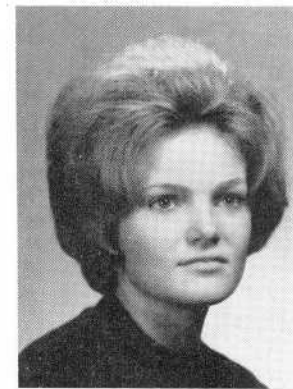


**MANUEL MICHAEL AFFONSO**



**MARY C. ALIX**

National Honor Society 4  
Basketball 2  
Camera Club 2  
Dramatic Club 4



**PRISCILLA MARIE ALLARD**

Glee Club 2



**WILLIAM A. ALLEN**

World History Club 3, 4



**PATRICIA ANN ALMEIDA**

Health Councilor 2, 4  
Science Club 3, 4  
American Junior Red Cross  
Vice-President 2, 3, 4  
Basketball 2  
Dramatics Club 3, 4



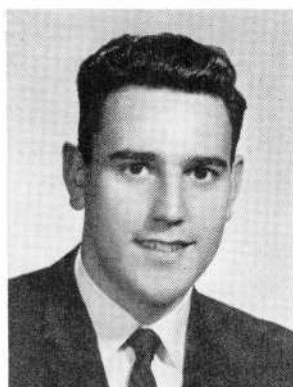
**CAROL THERESA ALVES**

Basketball 2  
Softball 2



**BARBARA JEAN AMARAL**

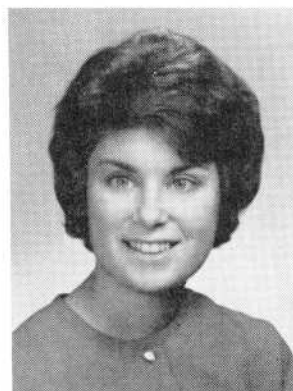
Home Room Director 2



**DAVID AMARAL**

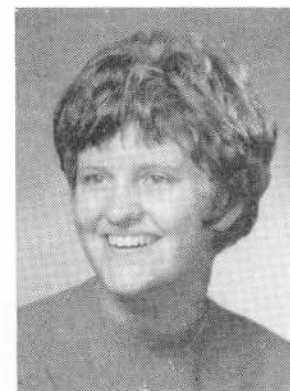


**BRUCE E. ANDREW**



**RHONNA LOUISE APPEL**

Speakers Bureau 4  
Debating Society 2, 3  
Basketball 2  
World History Club 3, 4  
Literary Club 3



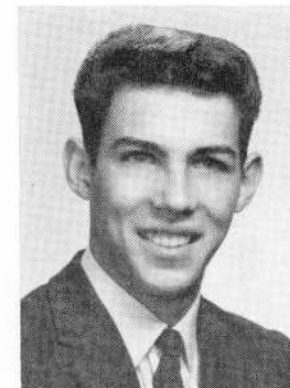
**EMILIE CATHERINE ARRUDA**

Sanitation Comm., Pres. 4  
Health Club, Vice-Pres. 2  
Home Room Director 4  
National Honor Society 3, 4  
Spanish Club 3, 4  
Basketball 2



**HELEN ANN ASSIFF**

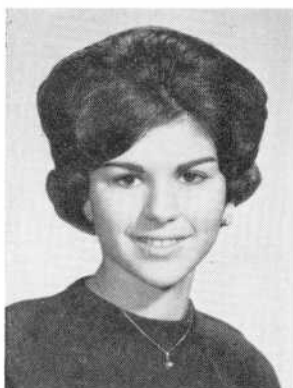
Glee Club 2, 3, 4



**DAVID AZEREDO**

Cadet Corps 3, 4  
Glee Club 4  
Mixed Chorus 4





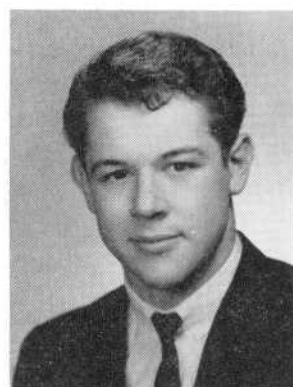
**BARBARA ANN BARBOZA**  
Basketball 2



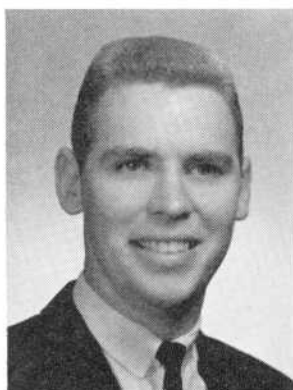
**JOYCE MARIE BARBOZA**  
Basketball 2  
Classical Club 2, 3, 4  
Spanish Club, Treas. 4  
Library Aide 2, 3, 4



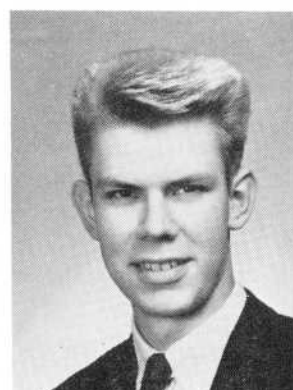
**NANCY L. BARBOZA**  
Classical Club 3  
Library Aide 2, 3, 4  
National Honor Society 3, 4  
Speakers Bureau 4



**NUNO ALVARO BARBOZA**  
Soccer 3, 4



**HAROLD E. BARTLEY**  
National Honor Society 4  
Cadet Corps 3, 4  
World History Club 3  
Chess Club 3  
Home Room Director 2, 3



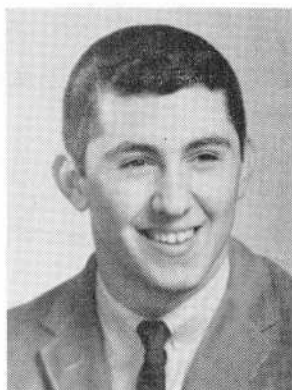
**MICHAEL JOHN BEDNARZ, JR.**  
Debating Society 2  
Junior Red Cross Council 2, 3  
President 4  
Cadet Corps 3, Lt. Colonel 4  
Record Book Asst Bus. Mgr. 4  
National Honor Society 4



**JEANNE T. BELANGER**  
Classical Club 2, 3, 4  
Spanish Club 3, 4  
Majorette 3, 4  
Home Room Director 2, 3  
Library Aide 2, 3  
Glee Club 2



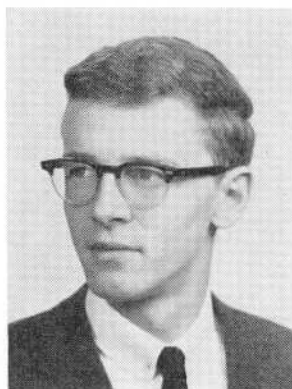
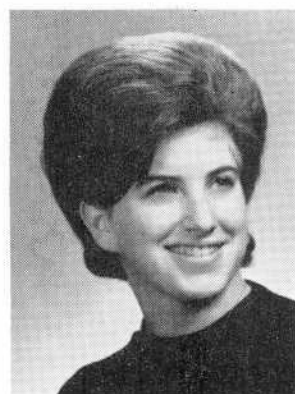
**ROSEMARY BELMONTE**  
Glee Club 2, 3  
National Honor Society 4



**ROBERT BELMORE**

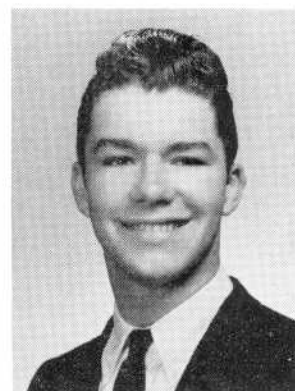
**PENNY JOY BERGER**

National Honor Society 4  
 French Club 2, 3, Vice-Pres. 4  
 Health Club 2  
 Library Aide 2, 3, 4  
 Spanish Club 3, 4  
 Science Club 4



**RICHARD JOSEPH BERGERON**

Cross Country 4  
 Glee Club 2, 4



**NORMAN GEORGE BERNIER**

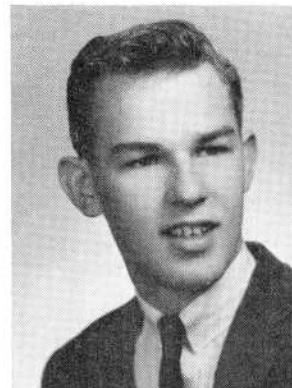


**DANE BERRY**

Glee Club 2  
 Band 2, 3, 4  
 Pep Band 2, 3, 4  
 Orchestra 3

**EDWARD CHARLES BERUBE**

Basketball 1, 2, 3, 4  
 Baseball 1, 2, 3, 4  
 Class President 1, 2, 3, 4  
 Home Room Director 1, 2, 3, 4  
 National Honor Society 3, 4  
 Student Council 1, 2, 3, 4



**FRANCIS J. BERUBE**

**DONALD WILLIAM BISHOP**

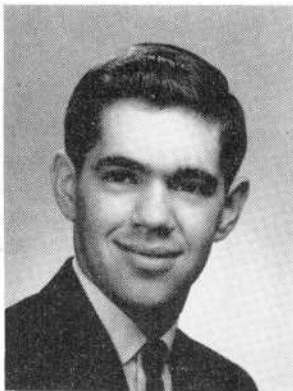




**VIRGINIA SOUZA BISPO**  
Portuguese Club 2



**JAMES M. BLACKBURN**



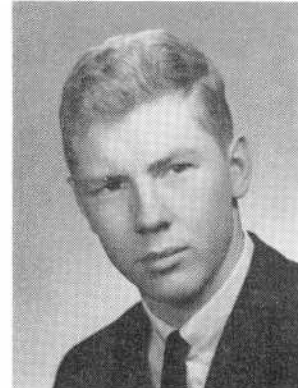
**ARTHUR L. BLISS**  
Library Aide, Treas. 2, 3  
Serenaders 4  
Glee Club 4  
Mixed Chorus 4  
Southeastern District Chorus 4



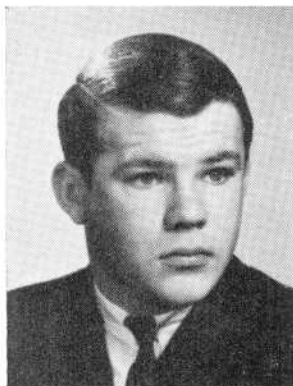
**BRENDA BESSIE BLUME**  
National Honor Society 4  
Classical Club 2, 3, 4  
Science Club 3, 4  
Chess Club 4  
Speakers Bureau 4  
Health Councilor 3



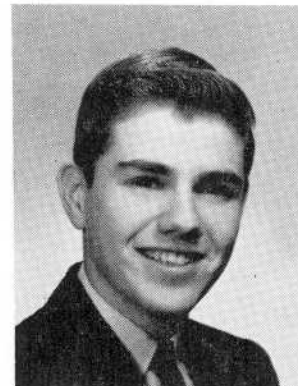
**STEVEN REMS BLUMSTEIN**  
Tennis 2, 3, 4  
National Honor Society 3  
Secretary 4  
Speakers Bureau 4  
Science Club 3, 4  
German Club 3, 4



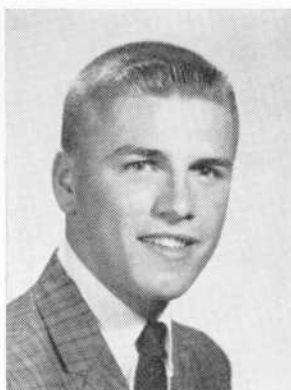
**JOHN EDWARD BOARDMAN**



**ERNEST NORMAND BOAS**



**TILDEN EVAN BOGUS**  
National Honor Society 3, 4



**ROBERT WALTER BONALEWICZ**

Football 2, 3, 4  
Basketball 2, 3, 4  
Baseball 2, 3, 4



**BARBARA LOUISE BORDEN**

Home Room Director 2, 4  
Spanish Club 3, Vice-Pres. 4  
Basketball 2  
Dramatics Club 2



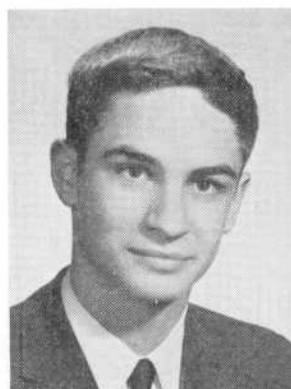
**DAVID BOTELHO**

Football 2, 3, Capt. 4  
Baseball 2, 3, Capt. 4  
Home Room Director 2



**ROGER ARTHUR BOUCHER**

Science Club 4



**CARL HENRY BOUDREAU**

National Honor Society 3, 4  
Biology Lab Assistant 2  
Physics Lab Assistant 4  
Science Club, Sec.-Tres. 3, Pres. 4  
Speakers Bureau 4



**RICHARD ARMAND BOUTIN**

Science Club 4  
Future Scientists 4



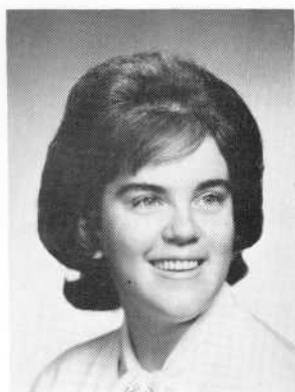
**ROLAND BRABANT**

**STELLA ANN BRAMORSKI**

National Honor Society 4  
Basketball 2  
Home Room Director 3  
Spanish Club 4  
World History Club 4  
Camera Club 2







**JOAN CORINNE BRENNAN**

**HILARY LYNN BRESSLER**

World History Club 3, 4  
Chess Club 3  
Science Club 4  
Future Scientists 4  
Music Appreciation 4



**VERNA ANNE BRIAND**

Camera Club 2  
Glee Club 2, 4  
Portuguese Club 2

**MARY JANE BRICKHILL**

Basketball 2  
Glee Club 2  
Dramatic Club 4



**CHRISTINA MARIE BRITLAND**

Dramatics Club 2  
Heart Fund Volunteer 3  
Glee Club 2

**ELEANOR MARGARET BRITLAND**

Dramatics Club 1  
Heart Fund Volunteer 2

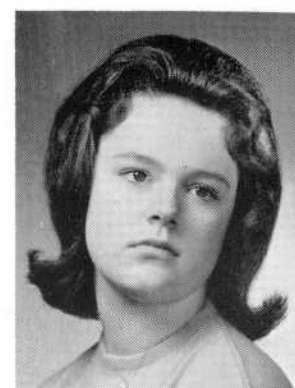


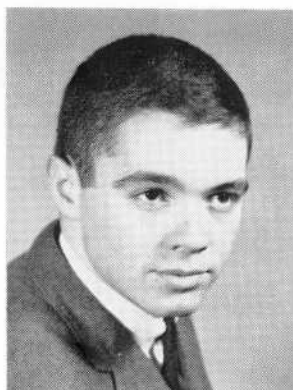
**EUNICE MICHAELINE BROGI**

Glee Club 2, 3, 4

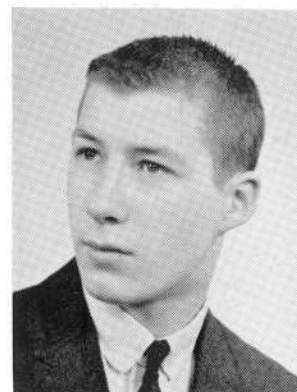
**BARBARA ADA BROUGHTON**

Chess Club 3, 4  
French Club 4  
Hilltop Staff 4



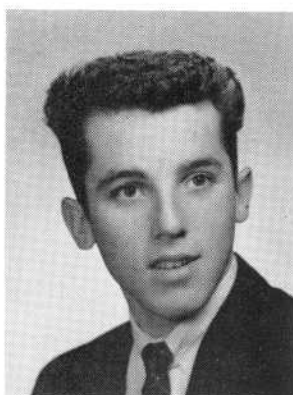


**JOHN ROBERTSON BRYAN**

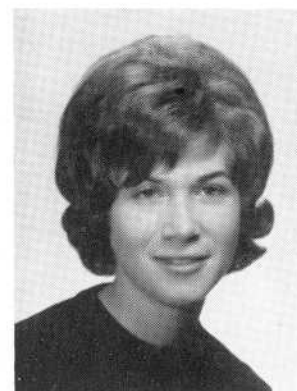


**RICHARD BORDEN BUFFINGTON**

Football 2, 3, 4  
Baseball 2, 3, 4  
Home Room Director 3  
Traffic 4



**DONALD ALFRED BUKER**



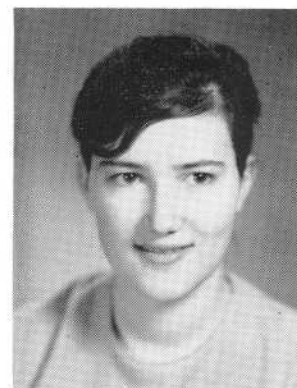
**PAULA ANN BURSTEIN**

Home Room Director 3  
Health Councilor 2, 4  
Debating Team 2, 3, 4  
Literary Club 3  
Classical Club 2, 3  
Prom Committee 3



**MADALINE C. CABRAL**

Business Club 4  
Numeral Club 2, 3, 4  
Glee Club 2  
Portuguese Club 2, 3  
J.V. Basketball 2  
Varsity Basketball 3



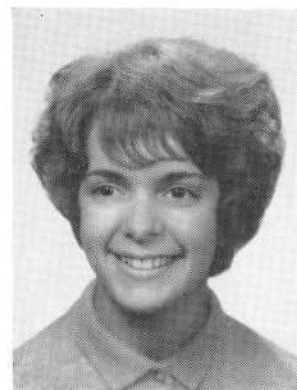
**MARIA P. CABRAL**

National Honor Society 3, 4  
Science Club 3, 4  
Classical Club 2, 3, 4  
Mathematics Club 4  
Library Aides 2, 3, 4  
Speakers Bureau 4



**NANCY LEE CABRAL**

Glee Club 3, 4



**RITA BARBARA CABRAL**

Portuguese Club 3, 4  
Glee Club 2, 3, 4  
Mixed Chorus 3, 4  
Silvertones 3, 4  
Business Club 4



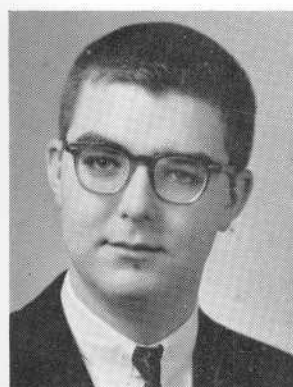
**MAUREEN JOYCE CAMARA**

Portuguese Club 2  
Basketball 2  
Business Club 4



**ROBERT CHRISTOPHER CAMARA**

Home Room Director 3  
Basketball 1  
Baseball 1



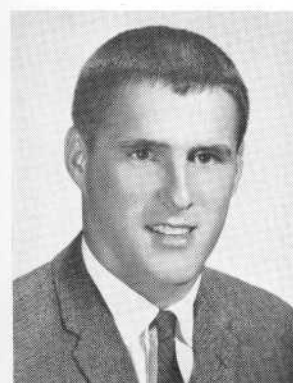
**ANTHONY FRANCIS CAMBRA**

Home Room Director 2



**NANCY ANN CARDOZA**

Basketball 2



**MICHAEL LAWRENCE CAREY**

Football 2, 3  
Track 3, 4  
Soccer 4



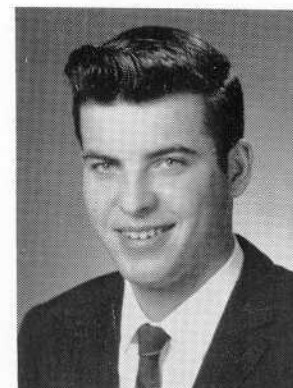
**ANDREA MARIE CARREIRA**

Dramatics Club 4  
Science Club 3, 4  
Chess Club 4  
Portugese Club 3, 4  
Home Room Director 2  
Music Appreciation Club 4



**EVELYN DEBRA CARREIRO**

Glee Club 2, 3

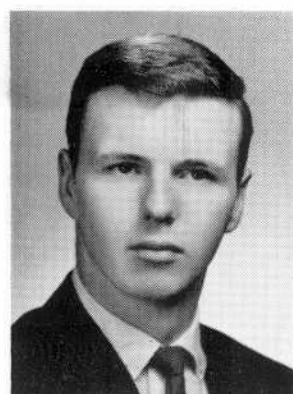


**RONALD AMOS CARREIRO**



**BARBARA CARROLL**

Basketball 2  
Classical Club 2, 3, 4  
Health Councilor 2, 4  
Vice-Pres. Home Room Director 3  
German Club 3, 4

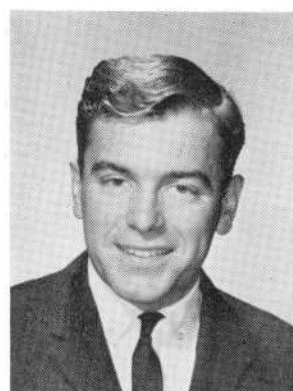


**THOMAS ANDREW CASEY**



**EDITH HELEN CAVANAUGH**

Basketball 2  
Debating Society 3, 4  
Majorette 3, 4  
Numerial Club 2  
Science Club 4



**RICHARD ANTHONY CHAPDELAINE**

Science Club 4  
Home Room Director 2  
Cross Country 2, 3  
Varsity Club 2, 3, 4  
Cadet Corps 2nd. Lt. 3, 4



**PRISCILLA CHAPMAN**

National Honor Society 3, 4  
President Mixed Chorus 4  
Speakers Bureau 3, 4  
German Club 3, 4  
Classical Club 3, 4  
Vocalaires 2, 3, 4



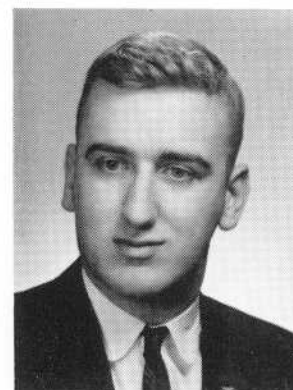
**CAROL ANN CHESTER**

Senior Mixed Chorus 2  
Girls Glee Club 3



**RONALD JOSEPH CHOUINARD**

National Honor Society 4



**EDWARD S. CIARPELLA**

National Honor Society 4  
Science Club 3, 4  
Mathematics Club 3, 4  
Library Aide 2, 3, 4  
Speakers Bureau 4





**GAIL ANN CIPOLINI**

Basketball 2



**ROSE MARIE CIPOLLINI**

Chess Club 3



**JUNE E. CISEK**

National Honor Society 4  
Basketball 2  
Bank Cashier 4  
Office Aide 4  
Business Club 4  
Record Book Typist 4



**BARBARA ANNE CLARK**

National Honor Society 3, 4  
Library Aide 2, 3, Pres. 4  
Speakers Bureau 4  
Mathematics Club 3, 4  
World History Club 3, 4  
Debating Society 2, 3



**BARBARA ANNE CLARKE**

Science Club 3, 4  
Dramatics Club 3, 4  
Basketball 2  
Camera Club 2  
Science Clubs of America 3, 4  
Future Scientists 3, 4

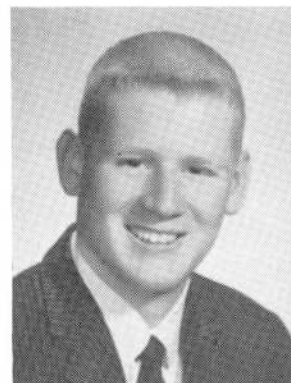


**JUDITH LEE CLARKE**

Basketball 2  
Home Room Director 1



**MAUREEN CLEARY**



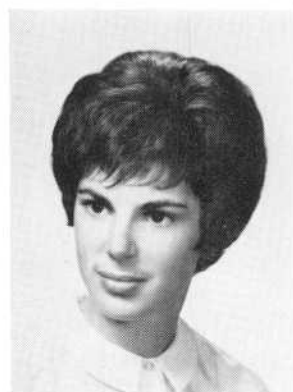
**JAMES E. CLITHERO**

Golf, 2, 3, 4



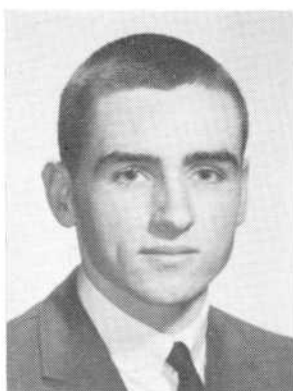
**ALICE CLAIRE CLOUTIER**

Councilor 1  
Home Room Director 2  
Health Councilor 3  
Cheerleader 3, 4  
Basketball 2



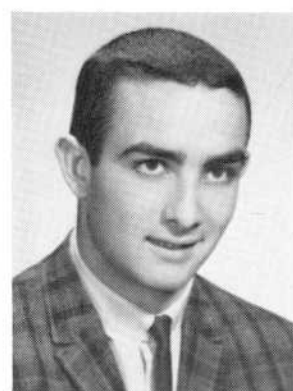
**SYBIL ESTA COHEN**

National Honor Society 3, 4  
Speakers Bureau 4  
Classical Club 2, 3, 4  
Basketball 2  
History Club 3, 4  
Science Club 2, 4



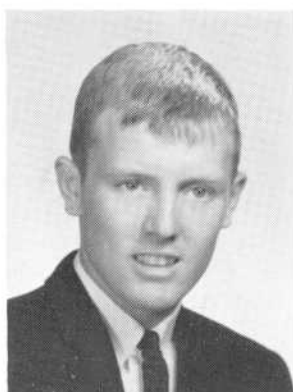
**FRANCIS LEO COLLINS**

National Honor Society 4  
Football 3, 4  
Basketball 2, 3, 4  
Home Room Director 4



**JOSEPH A. CONFORTI**

Basketball 2  
Football 3, 4  
Baseball 2, 3, 4



**JAMES A. COOK, JR.**

Basketball 2, 3, 4  
Baseball 2, 3, 4  
Soccer 2, 4  
Student Council 2, 3  
Health Council 2, 3  
Home Room Director 2, 3



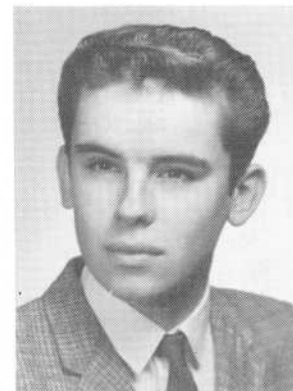
**RUSSLYN MARY COOPER**

Orchestra 1, 3, 4  
Vocalaires 3, 4  
Science Club 2  
Dramatics Club  
Orchestra Bus. Mgr. 4  
Tower Chimes 3, 4



**JUNE ELLEN COOPERSTEIN**

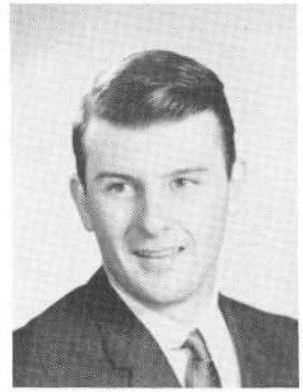
National Honor Society 4  
Record Book Bus. Mgr. 4  
Mixed Chorus Bus. Mgr. 4  
Vocalaires Mgr. 4  
Speakers Bureau 3, 4  
Classical Club 2, 3, 4



**RICHARD JOSEPH CORREIA**



**RITA IRENE CORRIERO**  
Glee Club 2, 3



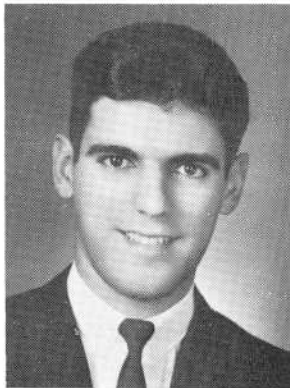
**NORMAN LEO CORRIVEAU**



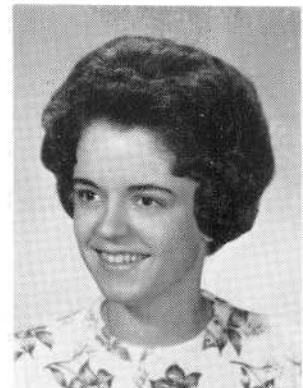
**FRANK N. COSTA**  
Portuguese Club 3, 4



**INGEBORG COSTA**  
National Honor Society 4  
Student Council 2, 3, 4  
German Club 2, 3, 4  
Home Room Director 3, 4  
Health Council 2  
Glee Club 2



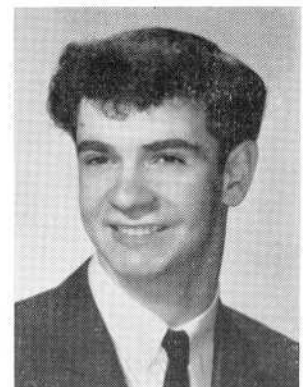
**JOSEPH R. COSTA**  
History Club 4  
Chess Club 4  
Science Club 4  
Science Clubs of America 4  
Future Scientists 4



**JOYCE M. COSTA**  
Dramatics Club 2, 3, 4



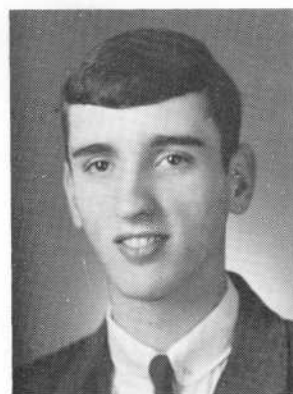
**LILLIAN COSTA**



**RICHARD ALAN COSTA**  
Traffic 4



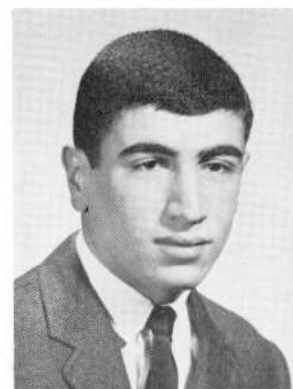
**ROBERT F. COSTA**  
Track 3, 4  
Cross Country 2, 3  
Portuguese Club 4



**RONALD S. COSTA**  
Portuguese Club 2, 3



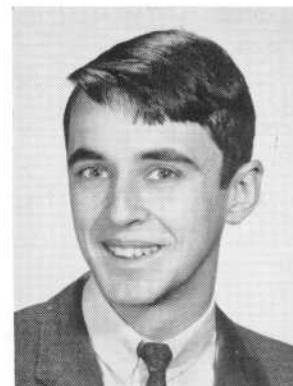
**SHARON ANN COSTA**  
History Club 4



**WILLIAM PAUL COSTA**  
Chess Club 4  
Jazz Society 4  
Science Club 4  
History Club 4



**WILLIAM THOMAS COSTA**



**CARLSON JOHN COTE**  
Golf 2, 3



**DOLORES PATRICIA COTE**  
Basketball 2

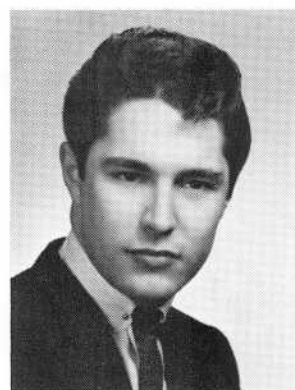


**PRISCILLA BERNICE COTE**  
Chess Club 4  
Science Club 3, 4  
Future Scientists 4  
Science Clubs of America 4  
History Club 4

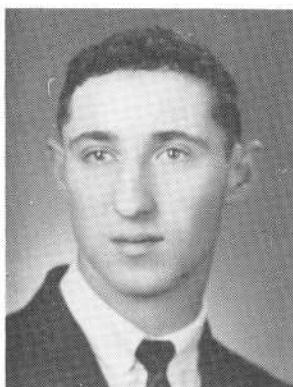




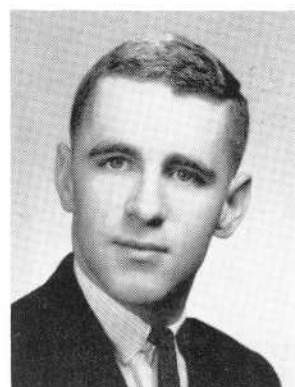
**RICHARD HENRY COTE**



**JOSEPH MICHAEL COUTE**

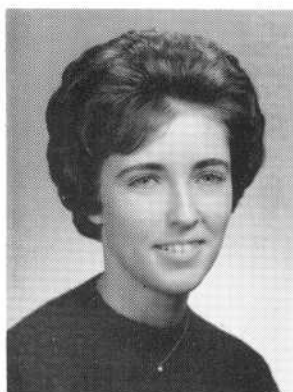


**OLIVER MICHAEL COUTO**



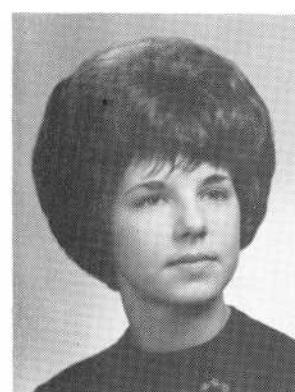
**JOHN FRANCIS COYLE**

Football Mgr. 3  
Office Aide 2, 3, 4  
Traffic 4

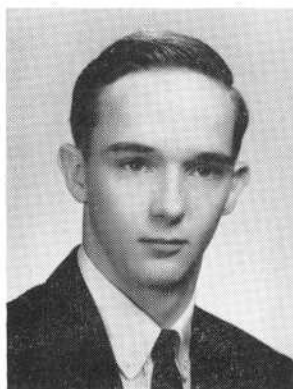


**JUDITH ELLEN CUMMINGS**

National Honor Society 4  
Classical Club 2, 3, 4  
Library Aide 4, Vice-Pres. 3  
Spanish Club Secretary 4  
Home Room Director 4  
Science Club 4



**KATHLEEN CURT**



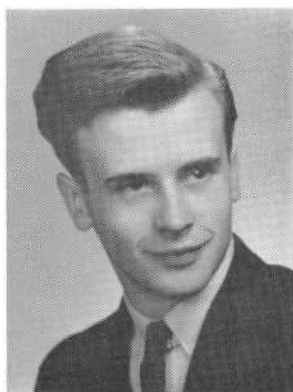
**PHILIP ALLEN CUSICK**

Health Council 2  
Basketball 1, 2



**JOAN CWIKLIK**

National Honor Society 4  
Glee Club 2, 3, 4  
Mixed Chorus 3, 4  
Silvertones 3, 4  
Basketball 2



**DAVID B. CYR**  
Bowling 3



**JOYCE MARYANNE DALUZ**  
Health Club 3  
Portuguese Club 2, 3  
Glee Club 2, 3, 4  
Business Club 4



**RICHARD DAVID DA ROSA**  
Track 2, 3, 4  
Band 2, 3, 4



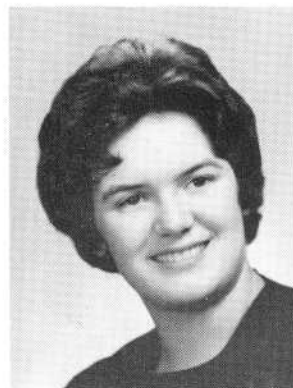
**CAROL ANN DARWISH**  
Home Room Director 2  
Bank Cashier 2



**JUDITH ANN DAVENPORT**  
Home Room Director 2  
Basketball 2  
First Aid 3



**LORRAINE PATRICIA DENNIS**  
Classical Club 3  
Portuguese Club 3, 4  
Bowling 4  
Health Council 4



**GLORIA DESMARAIS**  
Glee Club 2, 3  
Basketball 2



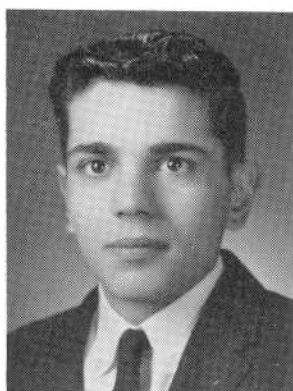
**ANN DESSERT**



**ROBERT DESTON**

**MARY A. DIAS**

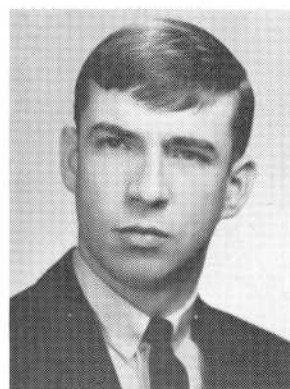
National Honor Society 4  
Glee Club 2  
Portuguese Club 3, 4, Sec. 2  
Business Club 4



**MANUEL DINIZ**

**EDMUND BRIAN DOLAN**

Office Aide 3  
Glee Club 2

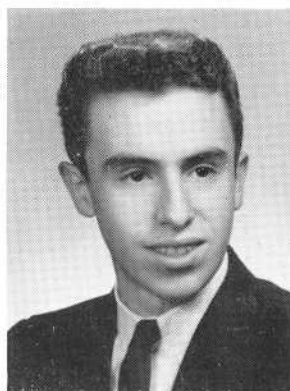


**BEVERLY ANN DOMINGOS**

Glee Club 2  
Home Room Director 1

**JOSEPH S. DOMINGOS**

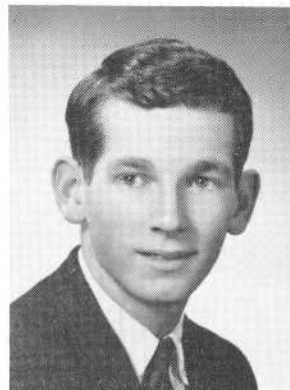
Band 1, 2, 3, 4  
Pep Band 2, 3, 4  
Dance Band 2, 3, 4  
Orchestra 3, 4



**JAMES F. DONNELLY**

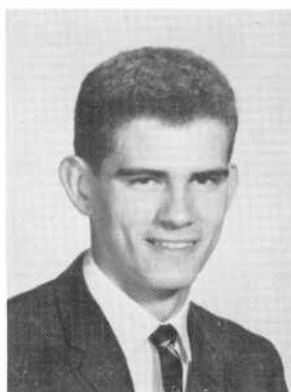
Debating Society 2  
Science Club 3, 4  
Cadet Corps  
Future Scientists 3, 4  
Science Clubs of America 3, 4

**MICHAEL JOSEPH DONOVAN**



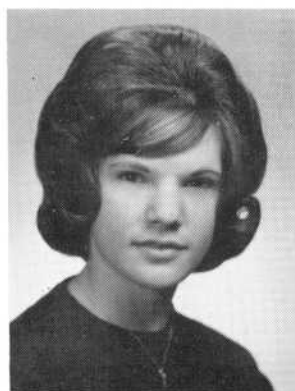


**MARGARET ELLEN DOWLING**



**ROBERT E. DRISCOLL**

Basketball 2, 3



**JANE M. DUARTE**

National Honor Society 4  
Office Aide 4  
Business Club 4  
Glee Club 2, 3  
Basketball 2



**GWENDOLYN M. DUBE**

Dramatics Club 2, 3, 4  
National Thespians 4  
French Club 4  
Health Council 3  
Glee Club 2, 4  
Bowling 4



**MARILYN DOLORES DUBE**

Basketball 2  
Business Club 4



**BARBARA RUTH DUCKETT**

National Honor Society 4  
Home Room Director 2, 3, Pres. 4  
Student Council 4  
German Club 3, 4  
Classical Club 2, 3, 4  
Speaker's Bureau 4

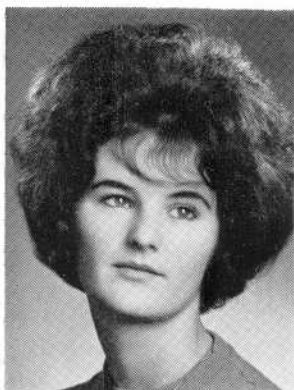


**EDMOND JOSEPH DUFRESNE**



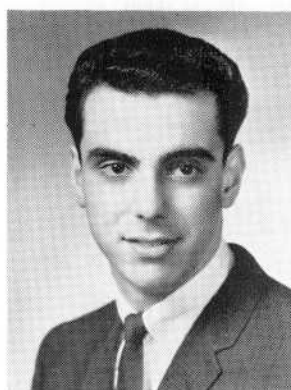
**ROBERT T. DUGAN**

Tennis 3, 4  
Science Club 3, 4  
Jazz Society 4  
Future Scientists 3, 4  
Traffic Squad 4  
Science Clubs of America 3, 4

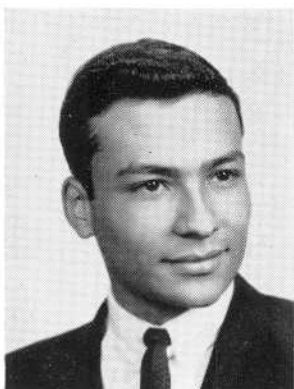


**BRENDA JOYCE DUPRAS**

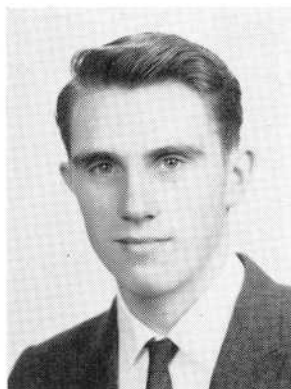
Office Aide 4  
Business Club 4  
Basketball 2  
Glee Club 2



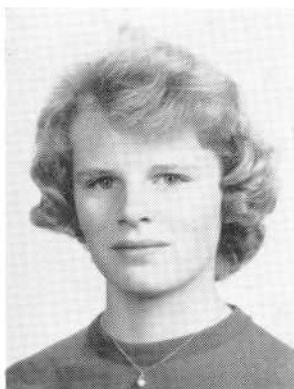
**REGINALD VINCENT DUPRE**



**DANIEL MAURETTI DURAND**



**DAVID C. DURFEE**  
Traffic 4



**MARJORIE ANN DURFEE**

National Honor Society 4  
Basketball 2  
Dramatics Club 3  
Science Club 3  
Spanish Club 4  
Volleyball 2



**THEODORE L. DZIALO**



**BRENDA JOYCE DZIOK**

Majorette 3, 4  
Glee Club 2  
Debating Society 4  
Basketball 2



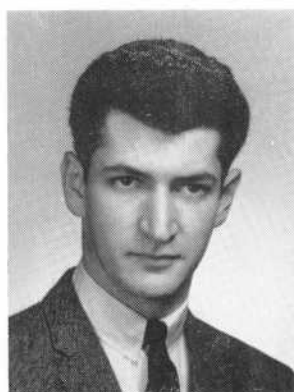
**MIRIAM ELIZABETH EARLE**

Library Aide 2, 3, 4  
Dramatics Club 3, 4  
Science Club 3, 4  
Speakers Bureau 4  
Health Council 4  
History Club 4

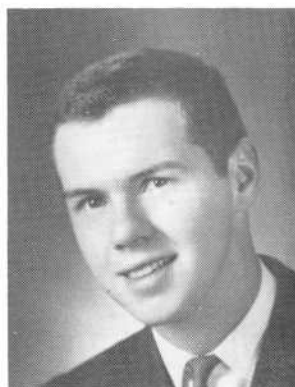




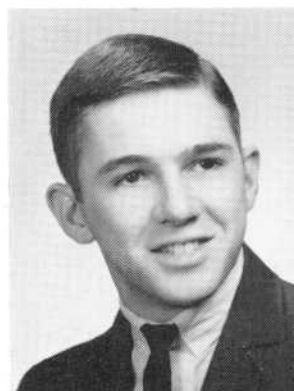
**ANTHONY ELHILOW**



**MAURICE ELIAS**  
Baseball 2  
Home Room Director 1



**WILLIAM BRIAN EMERSON**



**GERALD R. EMOND**



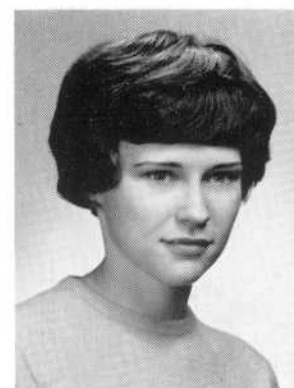
**BARBARA A. ENOS**  
Portuguese Club 2, 3, 4  
Glee Club 2, 3, 4  
Health Council 2



**SHARON ESKOW**  
National Honor Society 3, 4  
Science Club 2, 3, Vice-Pres. 4  
Mathematics Club 3, Vice-Pres. 4  
Classical Club 2, 3, 4  
History Club 3, 4  
French Club 2, 3



**DONALD A. FACCHIANO**  
Cadet Corps 3, 4



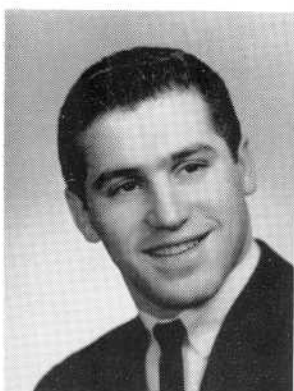
**SONYA L. FALCONER**  
Classical Club 3, 4  
Science Club 3  
History Club 3  
Health Council 2  
Softball 1



**MARY T. FALLOWS**  
Basketball 2, 3



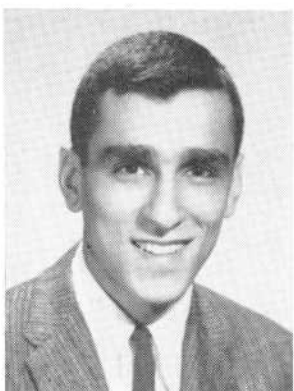
**CYNTHIA A. FARIA**  
Basketball 2  
History Club 4  
Science Club 4  
Bowling 4



**EDWARD R. FARIA**



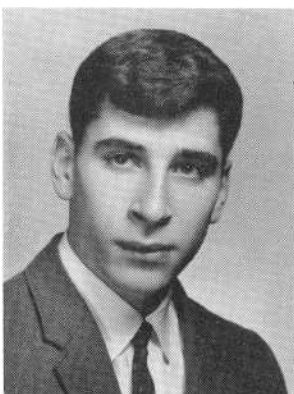
**NOELA A. FARIA**  
Biology Lab Asst. 2  
Portuguese Club 2, 3, 4



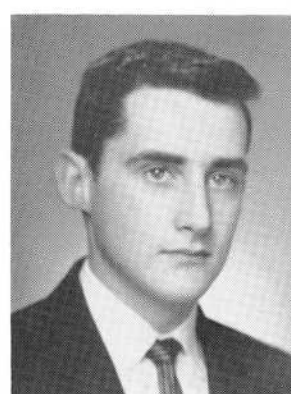
**RALPH M. FARIS**  
Home Room Director 2, 3, 4  
German Club 4



**STEPHEN PAUL FARNHAM**



**JOHN MITCHELL FARRAH**  
Cadet Corps 3

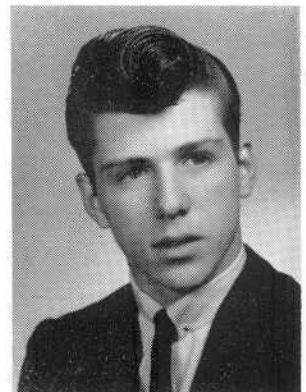


**LAURENCE FERNANDES**



**EILEEN ANN FERREIRA**

Basketball 2  
Spanish Club 3  
History Club 3

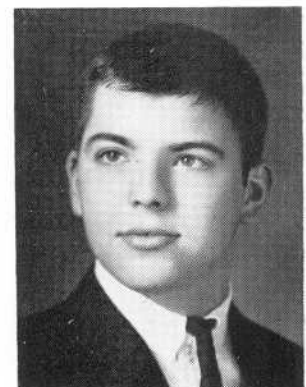


**MANUEL FERREIRA, JR.**

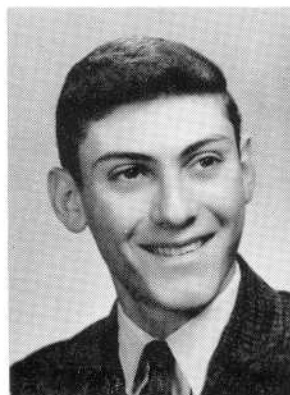


**MARIANO FERREIRA**

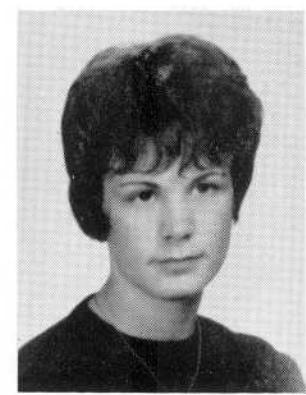
Durfee Science Fair Winner 3  
Regional Science Fair Winner 3  
Science Club 3  
Chess Club 4  
Spanish Club 2



**RICHARD THOMAS FERREIRA**



**ROBERT FERZAN**



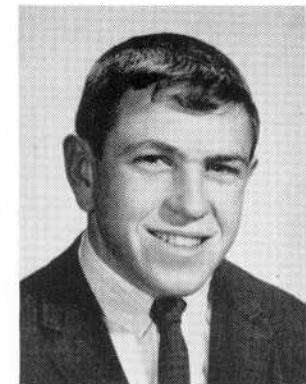
**ELAINE FIELDEN**

Basketball 2  
Volleyball 2  
Glee Club 2



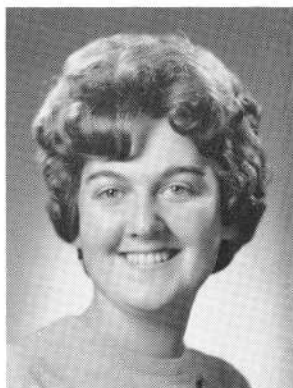
**JOANNE J. FISHER**

Spanish Club 2, 3, 4  
Science Club 4



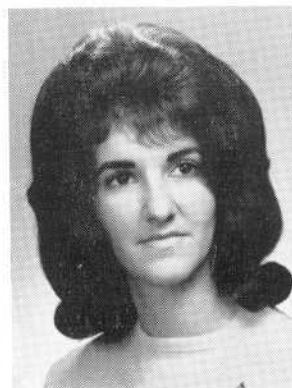
**ROBERT GERALD FITZGERALD**

Glee Club 2  
Basketball 2



**CLAUDETTE THERESA FOLSTER**

Home Room Director 2  
Glee Club 2  
Basketball 2



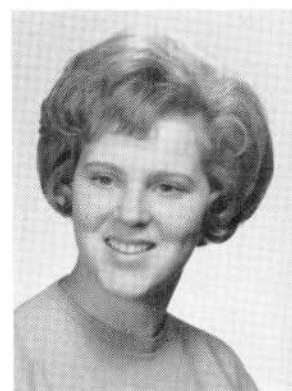
**CAROL A. FONSECA**

Glee Club 2  
Portuguese Club 2, 3

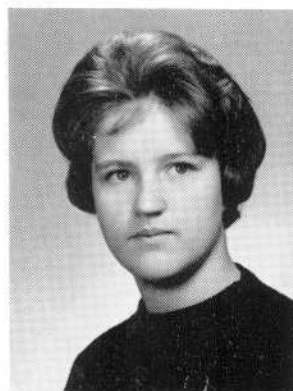


**JEANNE R. FORCIER**

Basketball 2  
History Club 3  
Spanish Club 3  
Health Council 3  
Home Room Director 4



**GAYLE PAMELA FOSTER**



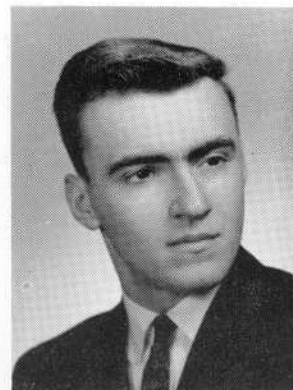
**MARIE BERNADETTE FRAIN**

Basketball 2



**CYNTHIA LORETTA FRAZER**

Basketball 2  
Glee Club 2, 3

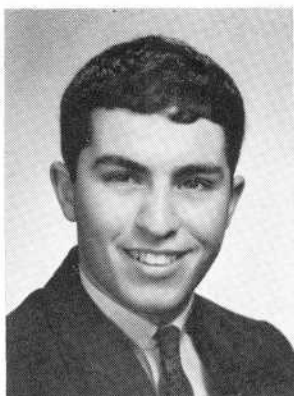


**JAMES JOHN FREITAS**

**PAULINE MARIE FREITAS**

Basketball 2  
Home Room Director 4  
Office Aide 4

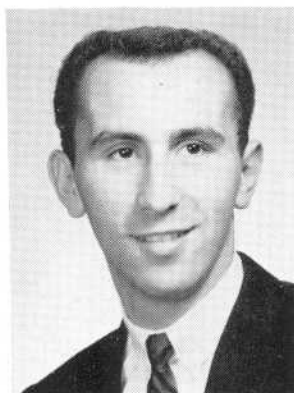
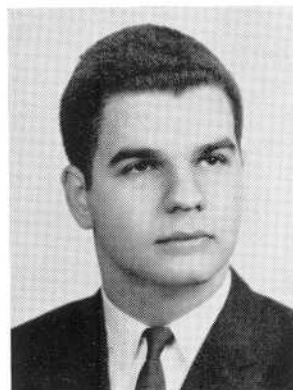




**STEPHEN JOSEPH FREITAS**

**RANDALL LEONARD FUHR**

Thespian Society 4  
Serenaders 4  
Dramatics Club 2, 3, 4  
Mixed Chorus 2, 3, 4  
Glee Club 2, 3, 4

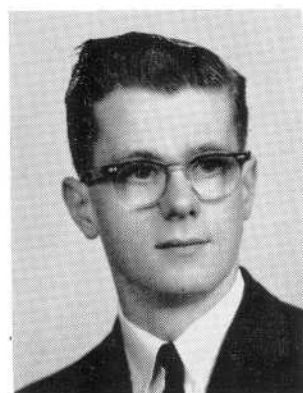
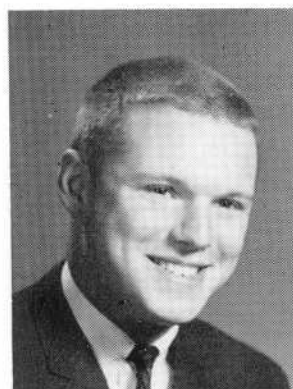


**ANTONE FURTADO**

Portuguese Club 2, 3  
Soccer 2, 3, 4  
Home Room Director 3

**PETER LAWRENCE FURZE**

Basketball 2, 3  
Cadet Corps 3  
Home Room Director 2

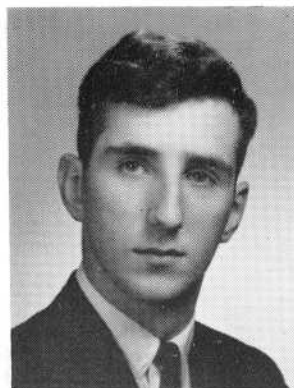


**RICHARD ERWIN GALLAGHER**

Orchestra 2  
Library Aide 3  
Mixed Chorus 4  
Glee Club 4  
Serenaders 4

**CAROL ANN GARANT**

Basketball 2  
Debating Society 2, 3, 4  
German Club 2, 3, 4  
Science Club 4  
World History Club 2, 3, 4  
Scientists Club of America 4

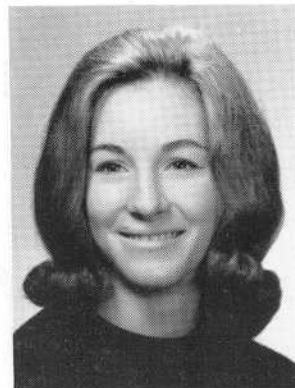


**ARTHUR RICHARD GAUTHIER**

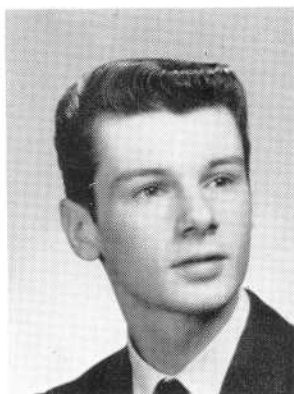
Glee Club 2

**PATRICIA ANN GAZARRO**

Glee Club 2, 3  
Basketball 2



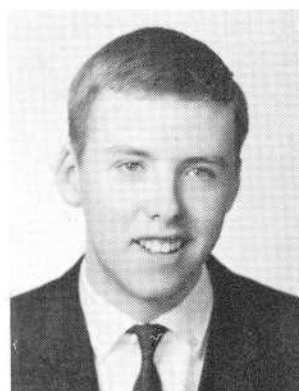




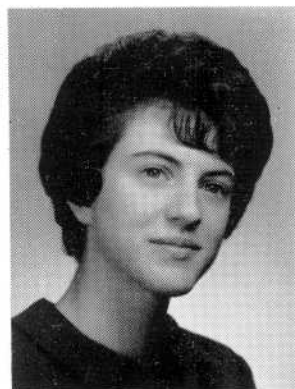
**ALLEN PAUL GIFFORD**



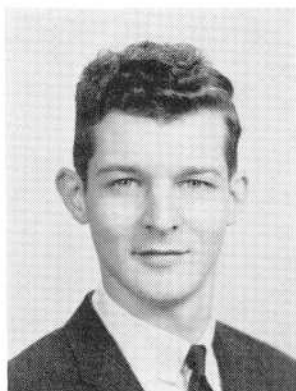
**PATRICIA ELIZABETH GIFFORD**  
Glee Club 2



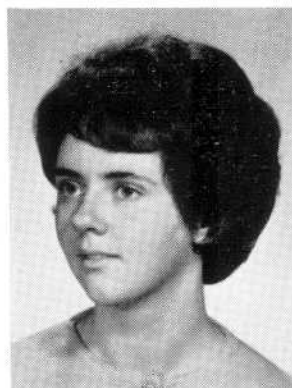
**JOHN FRANCIS GOLDEN**



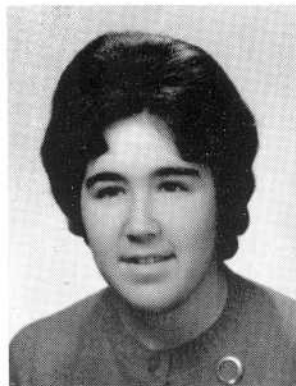
**MARCIA NORMA GOLD**  
Classical Club 2, 3, 4  
History Club 3, 4  
National Honor Society 3, 4  
Basketball 2  
Speakers Bureau 3, Sec. 4  
Science Club 2, 3, 4



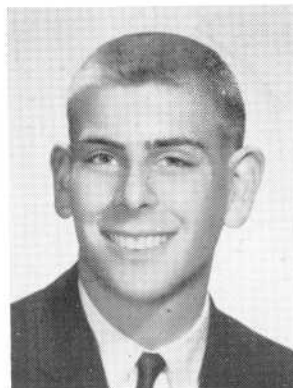
**EMERY MICHAEL GOMES**  
Cadet Corps 3, 4  
Office Aide 4



**LUCILLE JEANNE GOSSELIN**  
Classical Club 3, 4  
Spanish Club 3, 4  
Health Council 2  
Sanitation Commission 2  
Glee Club 2  
Basketball 2



**THERESA MARIE GOULET**  
Portuguese Club 2



**ALLAN MICHAEL GOURSE**  
Glee Club 2, 3, 4  
Serenaders 4  
Jazz Society 4  
Discussion Group 3

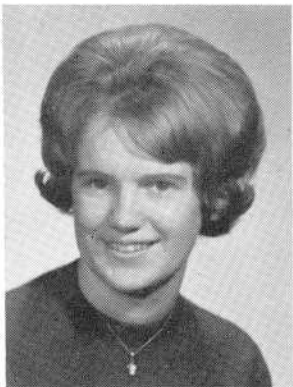
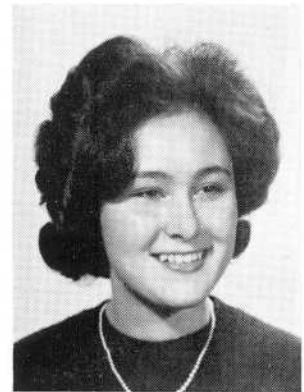


**GERALD CHARLES GOYETTE**

Glee Club 2

**SANDRA ANN GOYETTE**

National Honor Society 4  
Business Club 4  
Home Room Rirector 2  
Office Aide 4  
Chess Club 3  
Mixed Chorus 2, 3

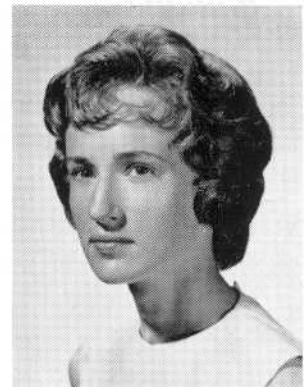


**SUSAN JOYCE GRANDFIELD**

Basketball 2  
History Club 2  
Spanish Club 3, 4  
Home Room Director 3

**KAREN GRANT**

Basketball 2

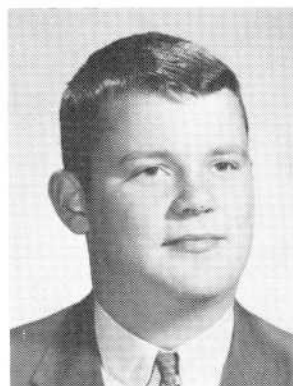
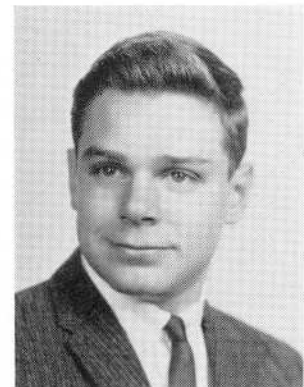


**JAMES DOUGLAS GRAY**

Camera Club 2  
Glee Club 2, 3  
Mixed Chorus 2, 3, 4  
Bowling 3, 4

**ALAN D. GREENE**

Home Room Director 4  
National Honor Society 4



**ROBERT EDWARD GREENSLADE**

**LAWRENCE JOHN GREENWOOD**

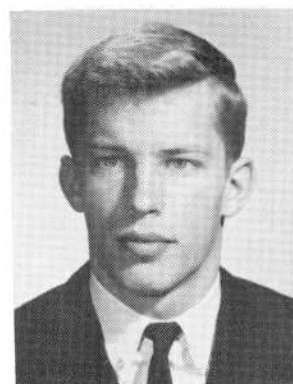
Baseball 2, 3, 4  
Football 3  
Soccer 4





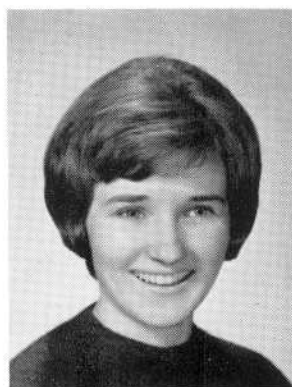
**MARLENE ANN GRODBERG**

Basketball 2  
Volleyball 2  
Chess Club 4



**ALAN JOSEPH GUILLOT**

Basketball 2

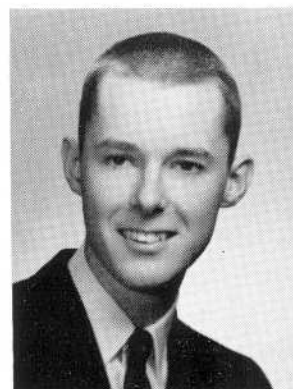


**PHYLLIS HELEN GUTTER**

National Honor Society 4  
Home Room Rirector 2  
Glee Club 2  
Classical Club 2, 3, 4  
History Club 2, 3, 4  
Spanish Club 3, 4

**JAMES MICHAEL HACKING**

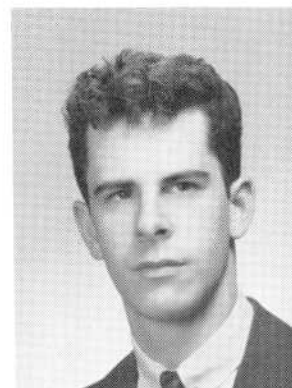
National Honor Society 3, 4  
Asst. Editor, Record Book 4  
Classical Club 3, 4  
Science Club 4  
Math Club 4  
French Club 4



**NANCY HAGUE**

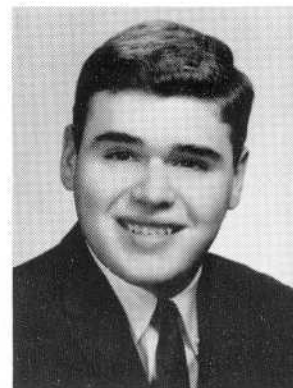
**GERARD RAYMOND HAJDER**

Mixed Chorus 2, 3, 4  
Glee Club 2, 3, 4  
Serenaders 4

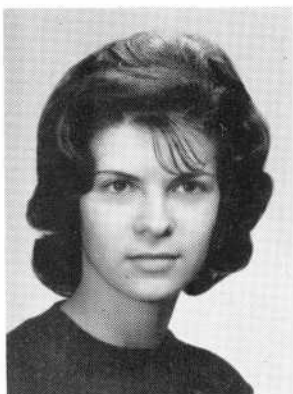


**EVERETT FRANKLIN HALPEN**

National Honor Society 4



**ERNEST JOSEPH HANLEY**

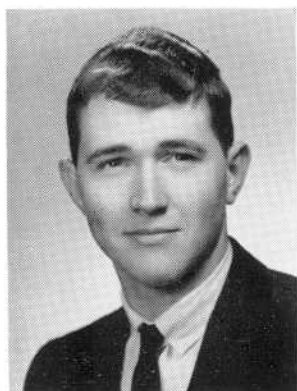


**GERALDINE HANSON**

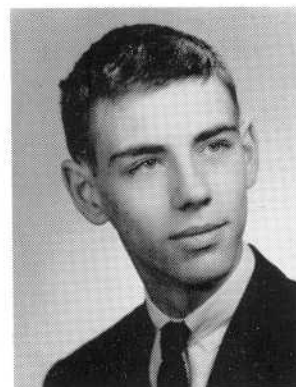
Glee Club 2, 3, 4  
Mixed Chorus 3, 4  
Silvertones 3, 4  
Basketball 2



**DOUGLAS KENNETH HARMON**



**JOHN THOMAS HARRINGTON**

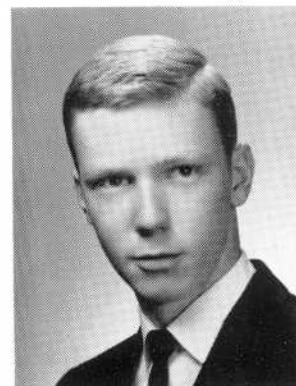


**JAY ROGER HARVEY**

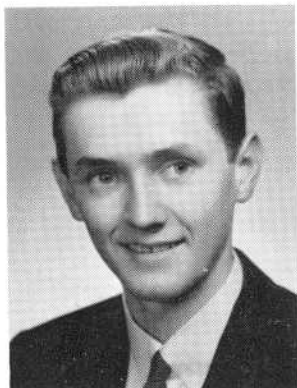


**JANET ALTHEA HASTIE**

Home Room Director 4

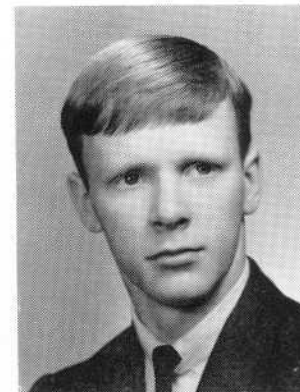


**DAVID LEIGHTON HATHAWAY**

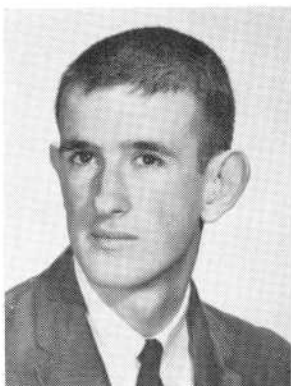


**THEODORE LEO HEBERT**

Science Club 4  
Science Clubs of America 4

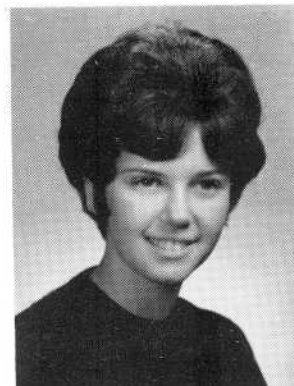


**ROBERT EDWARD HIGGINS**



**JOHN FRANCIS HINCHCLIFFE**

Football 3, 4



**JOCELYN ELAINE HOCHBERG**

Literary Club 3  
Science Slub 3, 4  
Speakers Bureau 4  
Prom Committee 3



**JUDITH LEE HOLAHAN**

Basketball 2  
Softball 2  
Classical Club 2, 3, 4  
Dramatics Club 3, 4  
Red Cross Jr. Aide 3



**MARIE EMMA HOUDE**

French Club 2  
Softball 2



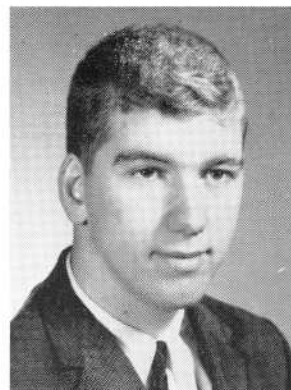
**CAROL ANN HOWARTH**

Dramatics Club 3  
Classical Club 3  
Bowling 3, 4  
History Club 4



**NANCY LEE HUTCHINS**

Glee Club 2, 3, 4



**ERIC ROBERT ISADORE**

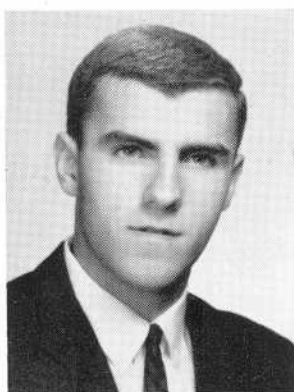
Baseball 2, 3, 4  
Basketball 2, 3, 4



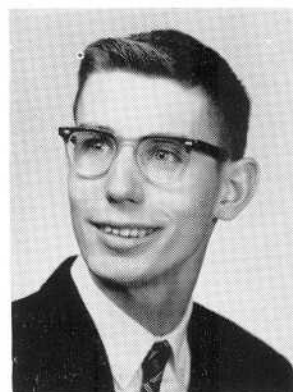
**JANICE R. ISHERWOOD**

Science Club 4  
German Club 3, 4  
Classical Club 2, 3, 4  
Music Appreciation Club 4  
Glee Club 2  
Health Club 2

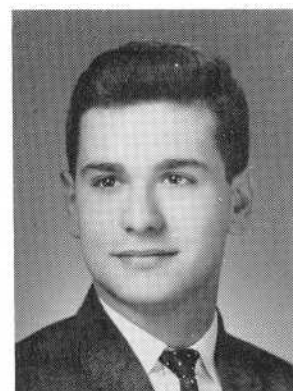


**JOHN LEONARD ISIDOR**

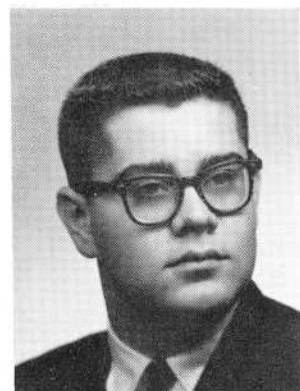
National Honor Society 4  
 Home Room Director 2, 4  
 Student Council 4  
 Basketball 2, 3, 4  
 Track 2, 3, 4  
 Cross Country 4

**RICHARD PAUL JARYNA**

Bowling 3, 4

**JAMES J. JOAQUIN****JOSEPH N. JOAQUIN**

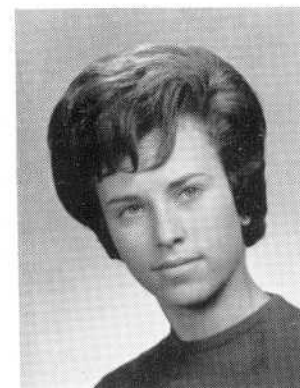
Portuguese Club 2, 3, 4  
 Football Mgr. 4

**RUSSELL THEODORE JUST**

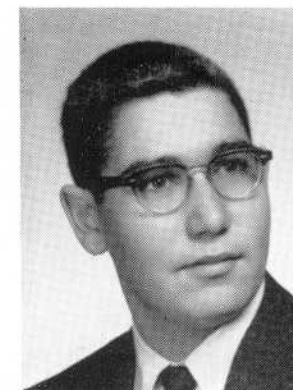
History Club 3, 4  
 Basketball 1  
 Baseball 1

**THEDA FRANCES KACZYNSKI**

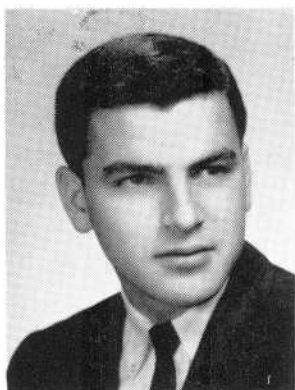
History Club 2, 3, 4  
 Basketball 2  
 Softball 2, 3

**JENNIFER DEE KANE**

National Honor Society 3, 4  
 Speakers Bureau 3, Pres. 4  
 History Club 2, 3, Vice-Pres. 4  
 Classical Club 2, 3, 4  
 Science Club 3, 4  
 Vocalaires 4

**EDWARD S. KATERSKY**

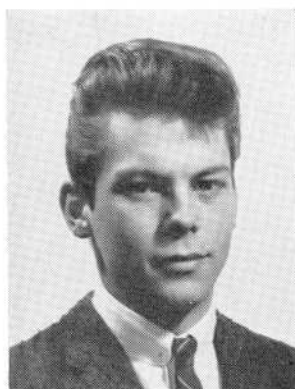
Debating 2, 3, 4  
 Health Council 3  
 Sanitation Committee 3  
 Bowling 4  
 Tennis 3, 4



**GARY M. KAY**  
Basketball 2  
Cadet Corps 3, 4  
Cross Country 3  
Basketball Statistician 4



**DONNA VEREE KELLEY**  
Glee Club 2



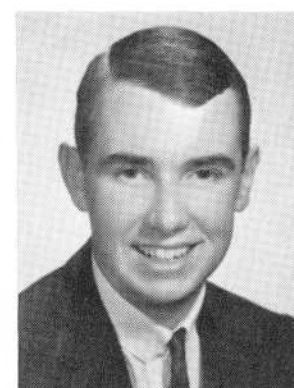
**ROBERT KENYON**



**MICHAEL KESHURA, JR.**



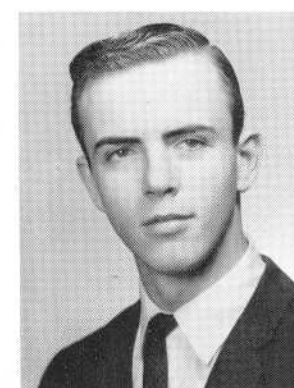
**PAULINE KHOURY**  
Glee Club 2



**PAUL THOMAS KIELY**  
Football 3



**RAYMOND GEORGE KING**  
Home Room Director 3

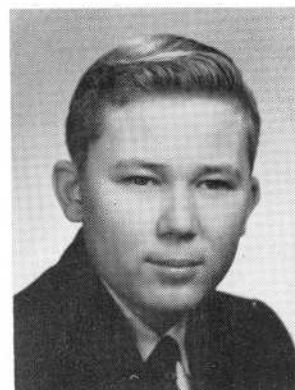


**FRANCIS EDWARD KITCHEN**  
Dramatics Club 2, 3, 4  
Cadet Corps 3, 4  
Tennis 3, 4  
Jazz Club 4



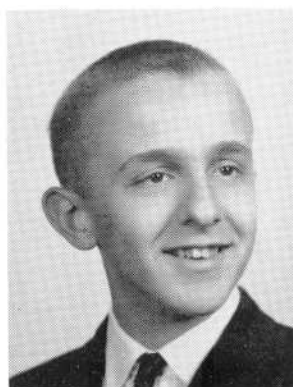
**ROBERT FRANCIS KITCHEN**

Soccer 2, 3, 4  
Basketball 2  
Portuguese Club 3, 4  
Audio-Video Club 3  
Cadet Corps 3



**JOHN KOSTIUK**

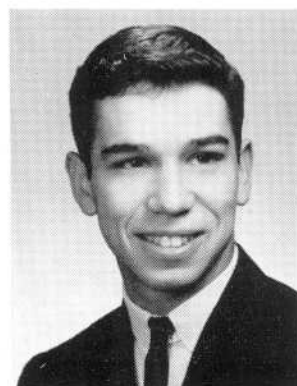
Home Room Director 2



**STEPHEN JOHN KOZAK**



**JUDITH A. KOZAKA**



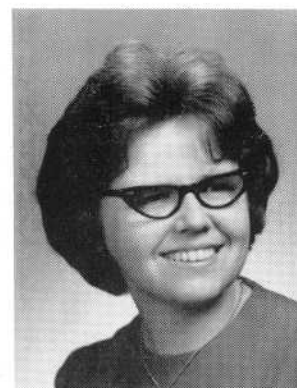
**HERBERT IRA KRAVETZ**

National Honor Society 3  
Vice-President 4  
Health Council 4  
Science Club 2, 3, 4  
German Club 4  
Literary Club 3



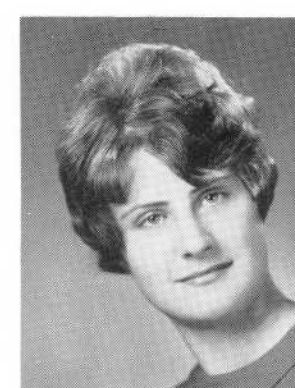
**IRENE J. KULPA**

National Honor Society 4  
Basketball 2  
Noontime Music 3  
Business Club 4  
Home Room Director 4



**LOUISE KUTTNER**

Band 3  
Orchestra 2  
Brass Ensemble  
Woodwind Ensemble  
All District Band  
Vocalaires



**NOREEN ANN KWASNIOWSKI**

Glee Club 3



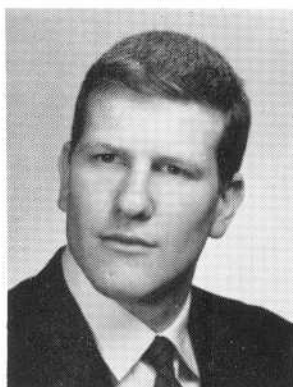
**BARBARA ANN LAHOUD**

Camera Club 2  
Basketball 2  
Campus Book Club Sec. 2



**MICHAEL FRANKLIN LANDRY**

Camera Club 2  
History Club 3  
Chess Club 3  
Cadet Corps 3, 4  
Mixed Chorus 2, 3, 4  
Glee Club 2, 3, 4



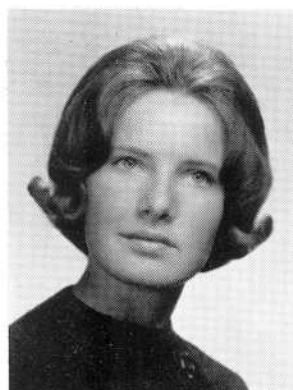
**RAYMOND LANDRY**

Football 3, 4



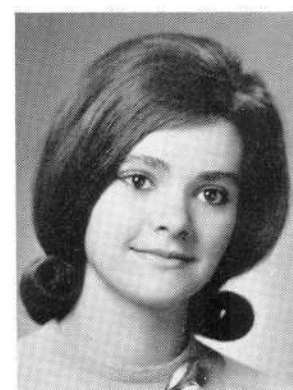
**LOUISE H. LANGTON**

Glee Club 2, 3  
Mixed Chorus 3  
Office Aide 4  
Business Club 4



**NANCY ELLEN L'ARCHEVESQUE**

Home Room Director 2  
Cheerleader 3, 4  
Classical Club 3, 4  
Dramatics Club 2  
Vocalaires 2  
Glee Club 2



**PAULA M. LASKOWSKI**

National Honor Society 4  
Glee Club 2  
Dramatics Club 2, 3  
Classical Club 3, 4  
German Club 3, 4  
Vocalaires 3, 4



**LAURA LAUREANNO**

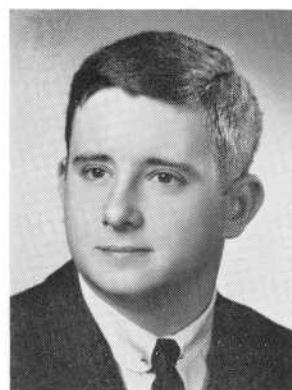
Camera Club 2  
Glee Club 2



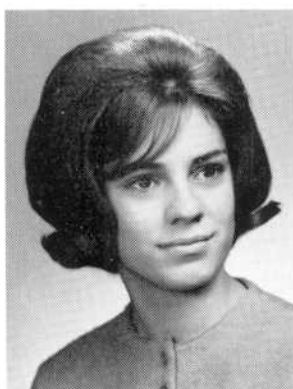
**WILLIAM LAUZON**



**ANNE FABIANE LAVOIE**

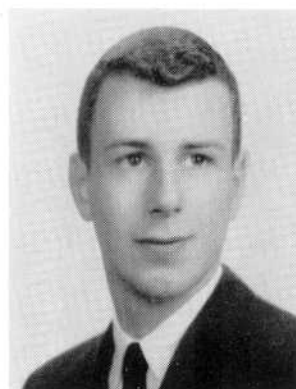


**ALLAN LAWTON LAWRENCE**



**ROSEMARIE A. LEANDRO**

Homeroom Director 1  
Basketball 2  
Glee Club 2  
Portuguese Club 2, 3



**WILLIAM D. LEARY**



**NANCY ANN LECKO**

National Honor Society 4  
Glee Club 2  
Basketball 2  
Business Club 4  
Office Aide 4



**MICHAEL W. LEDO**

Hilltop Staff 4



**MABEL ANNE LEITE**

Glee Club 3  
Numeral Club 2, 3, 4  
Volleyball 3  
Softball 3, 4  
Basketball 3, Capt. 4



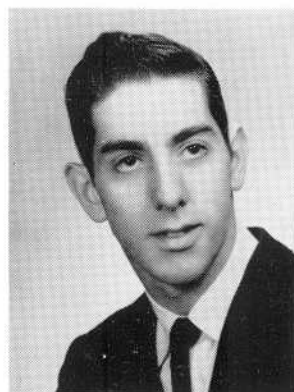
**MARIA ISABEL LEITE**

Basketball 2  
Camera Club 2  
Glee Club 2





**PAUL LESSARD**



**NORMAND LEVESQUE**

Track 1  
Bowling 3, 4



**VIRGINIA LEE LEVESQUE**

Basketball 2



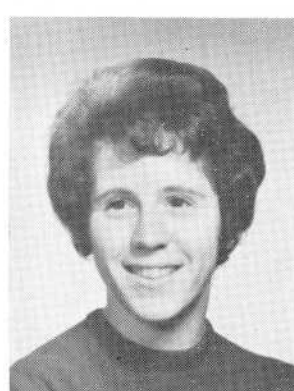
**ALAN CHARLES LEVINE**

Debating Society, Sec. 3, Pres. 4  
Home Room Director 3, 4  
Speakers Bureau 4  
Science Club 3, 4  
Literary Club 3  
National Honor Society 3, 4



**MARILYN D. LEVISS**

Science Club 1  
History Club 1  
Home Room Director 1  
Spanish Club 2  
French Club 3

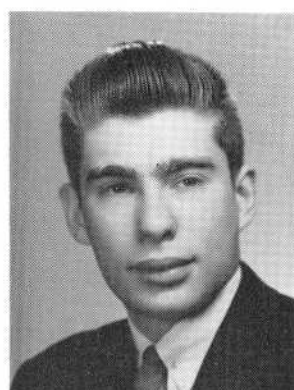


**DEBORAH JANE LEVY**

Speakers Bureau 4  
Spanish Club 3, 4  
World History Club 3, 4  
Basketball 2  
Literary Club 3



**JOYCE ANN LIMA**



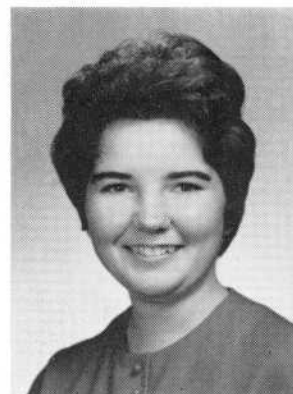
**WARREN MARK LINDEN**

Band 2, 3, 4



**NANCY ARLENE LIPSON**

National Honor Society 4  
Health Council 2  
Science Club 3, 4  
Spanish Club 3, 4  
Camera Club 2, 3, 4  
French Club 2



**MARY T. LITTLEFIELD**

Basketball 2  
Volleyball 2



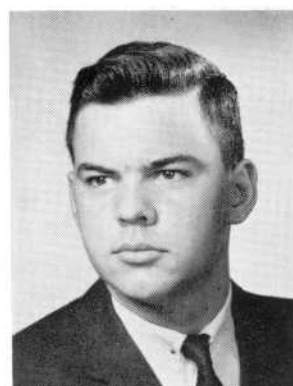
**KENT W. LOIKA**

Golf 2, 3, 4  
Glee Club 2, 3, 4  
Mixed Chorus 3, 4

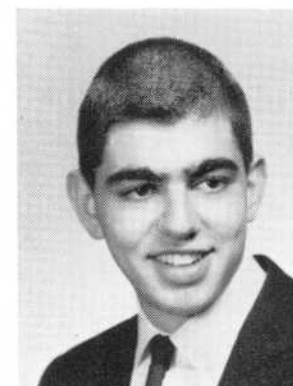


**JANICE MAE LONGCHAMPS**

Health Council 1, 2  
Glee Club 2  
Business Club 4



**JOHN F. LOPES**



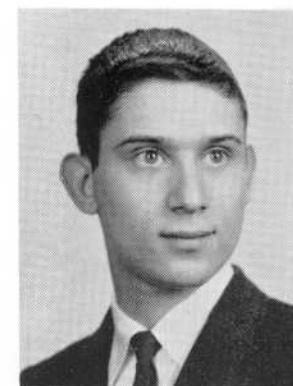
**NORMAN M. LOUIS**

Audio-Visual Aide 2, 3, 4  
Camera Club 2, 3, 4



**NANCY AUDREY LOVIT**

Band 2, 3  
Political Club 3  
Speakers Bureau 4  
Basketball 2  
Home Room Director 4  
Spanish Club 3, 4



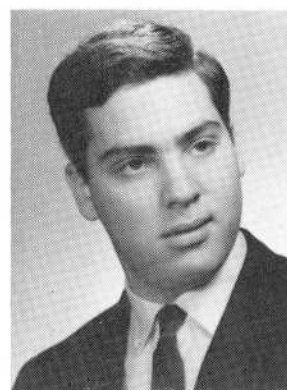
**NATHAN LOVIT**

Home Room Director 2  
Chess Club 4



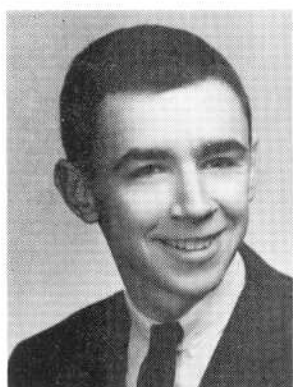
**JEREMIAH R. LOWNEY**

National Honor Society 3, 4  
Science Club 3, 4  
Math. Club 3, Pres. 4  
Debating Society 2, 4  
Chess Club 4  
German Club 4



**JEFFREY LUCOVE**

Dramatics Club 3, 4  
Science Club 4  
Future Scientists 4



**RICHARD JAMES LYNCH**

Office Aide 4



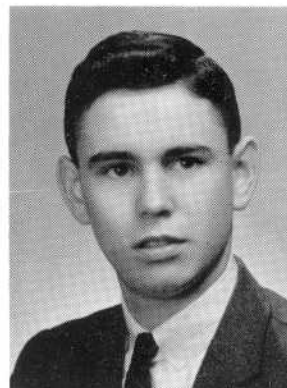
**FRANCES ANN MACHADO**

Portuguese Club 2  
Office Aide 4



**ROBERT R. MALTAIS**

Home Room Director 4



**BRUCE B. MANCHESTER**

National Honor Society 4  
Science Club 3, 4  
Dramatics Club 2, 3, 4  
National Thespian Society 3,  
Sec.-Treas. 4  
Classical Club 2, 3, 4



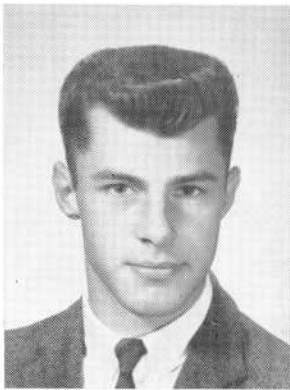
**MARJORIE A. MANCHESTER**

Home Room Director 4  
Office Aide 4  
Noon Music 3



**MADALENA MANTEIGA**

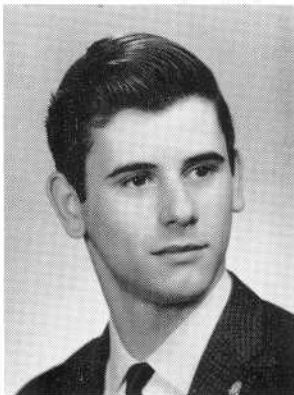
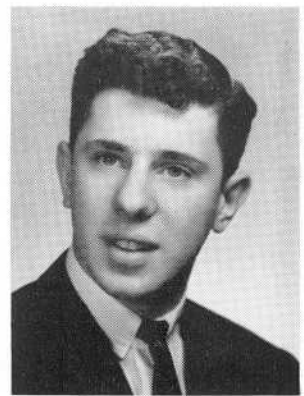
Volleyball 2  
Basketball 2  
Glee Club 2, 3  
Office Aide 4  
Business Club 4  
Record Book Typist 4



**MALCOLM J. MANUELS**

Portuguese Club Sec. 4  
Science Club 4  
Future Scientists 4  
National Science Club 4

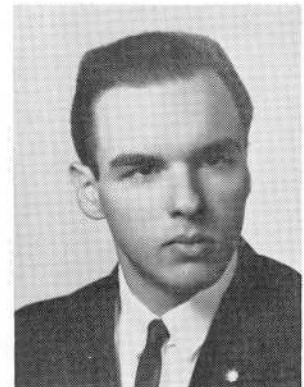
**DAVID MARSLAND**



**RICHARD A. MARTEL**

Cadet Corps 3

**ROBERT MARTINS**

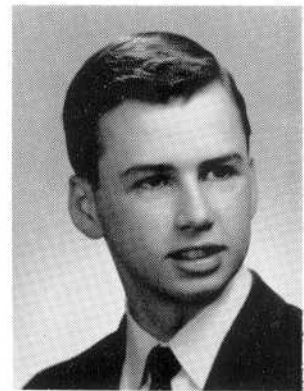


**SHERYL ANN MARTINS**

National Honor Society 3, 4  
Science Club 3, 4  
Numeral Club 3  
Basketball 3, Mgr. 4  
German Club 4  
Dramatics Club 3

**LAWRENCE EDWARD MARUM**

Home Room Director 1  
Science Club 3, 4  
Lab Assistant 3, 4  
Jazz Society 4  
Track 3, 4  
Cross Country 4

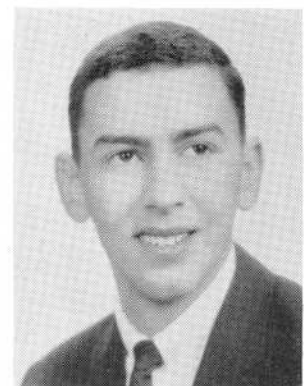


**DONALD PETER MASSOUD**

Library Aide 2, 3, 4  
Basketball 1  
Baseball 1  
National Honor Society 4

**JOHN PAUL MATHIAS**

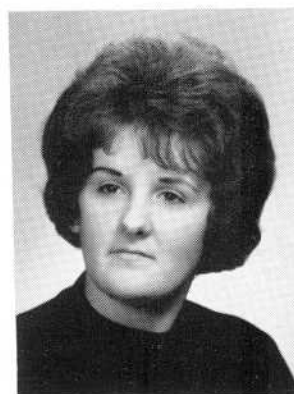
Home Room Director 2  
Portuguese Club 4



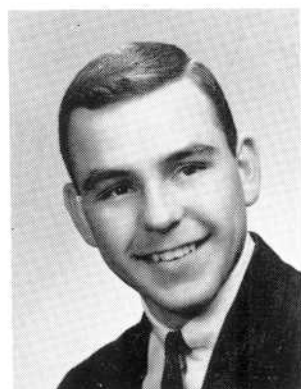


**SANDRA LEE MATHIAS**

Jazz Society 4  
Glee Club 2, 3  
Mixed Chorus 3, 4  
Vocalaires 3, 4  
Basketball 2

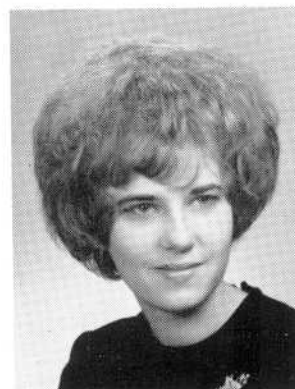


**PAULINE MATHIEU**



**NORMAN A. MAYNARD**

Dramatics Club 2  
Chess Club 3  
History Club 4  
Jazz Society 4

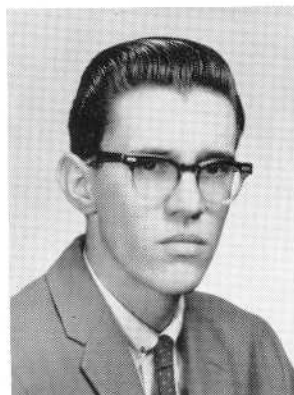


**JANICE L. McCARTHY**

Business Club 4  
Glee Club 2, 3, 4  
Basketball 2



**JOYCE McCOY**



**GEORGE McFALL**



**HELEN L. McINNIS**

Basketball 2  
Home Room Director 3  
Speakers Bureau 4  
Dramatics Club 3



**JUDITH ANN McKIAN**

Glee Club 3  
Business Club 4



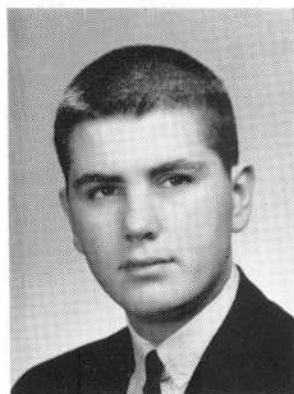


**ANN E. McMAHON**

Band 2, 3, Manager 4  
Orchestra 2, 3, 4  
Home Room Director 2  
Vocalaires 3, 4  
Brass Ensembles 2, 3, 4  
All-State Band 3, 4

**BRYAN McMAHON**

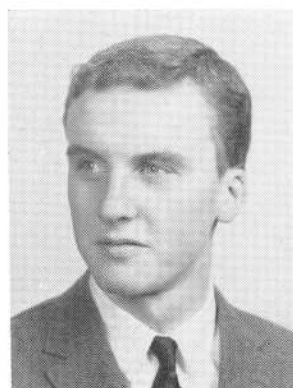
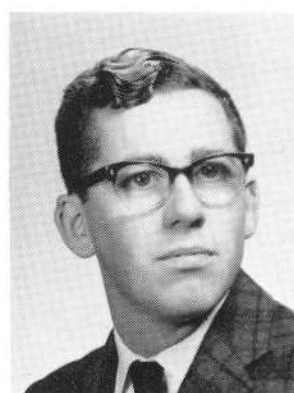
Science Club 3, 4  
Spanish Club 2  
Chess Club 3, Sec.-Treas. 4  
Glee Club 2  
Home Room Director 2  
Tennis 2, 3, Capt. 4



**JAMES P. McMANUS**

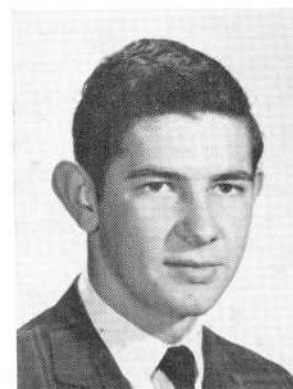
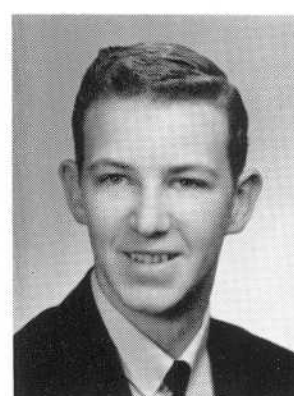
Chess Club 4  
Science Club 3

**KENNETH P. McMULLEN**



**BRIAN F. McNALLY**

**THOMAS A. McNALLY**



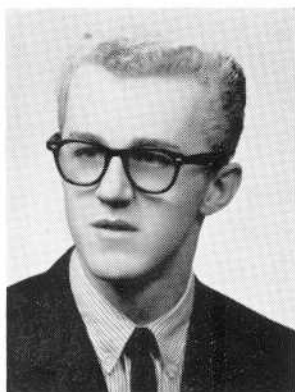
**JAMES McVEY**

Cadet Corps 2

**MAUREEN. F. MEAGHER**

Hilltop Staff 4  
Debating Society 2, 3, 4  
Music Club 3, Vice-Pres. 4  
Silvertones 3, 4  
Mixed Chorus 3, 4  
German Club 3, 4





**TERRY JAMES MEAGHER**



**ANGELINA M. MEDEIROS**  
Basketball 2



**ANTONE JOSEPH MEDEIROS**



**BARBARA ANN MEDEIROS**  
Portuguese Club 2, 3, 4  
Home Room Director 3, 4  
Business Club 4  
Glee Club 3, 4  
Office Aide 4  
National Honor Society 4



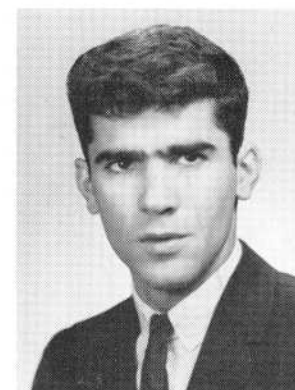
**BEVERLY A. MEDEIROS**



**CYNTHIA L. MEDEIROS**  
Basketball 2  
Glee Club 2, 3  
Portuguese Club 2, 3, 4



**DAVID R. MEDEIROS**  
Portuguese Club 2, 3, 4  
Science Club 4



**GEORGE MEDEIROS**  
Soccer 3



**JOSEPH N. MEDEIROS**

**KATHLEEN A. MEDEIROS**

National Honor Society 4  
Portuguese Club 2, 3  
Business Club 4  
Glee Club 2, 3  
Office Aide 4  
Home Room Director 2

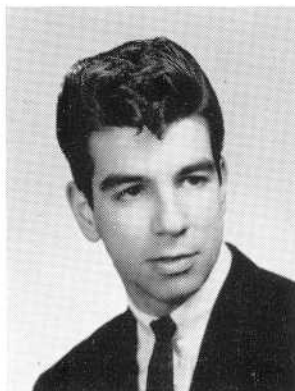


**MADLINE MEDEIROS**

Health Club 2, Sec.  
Sanitation Comm. 2  
Debating Society 2, 3  
Band 3

**MARION M. MEDEIROS**

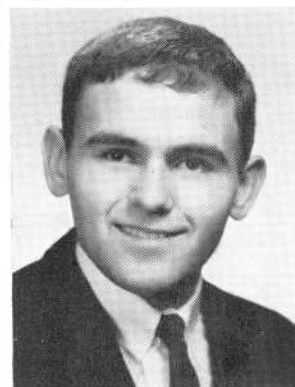
Basketball 2



**J. MICHAEL MEDEIROS**

**PATRICIA V. MEDEIROS**

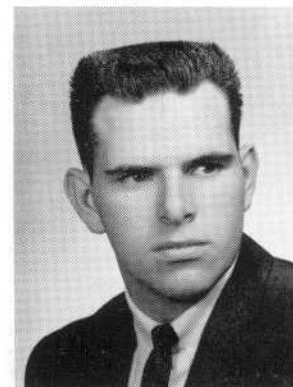
Glee Club 2, 3  
Mixed Chorus 3  
Spanish Club 2, 3  
German Club 3, 4



**RONALD MEDEIROS**

Portuguese Club 2, 3

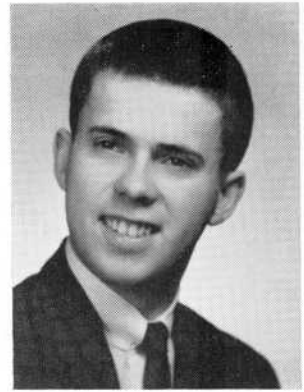
**RONALD MELANSON**





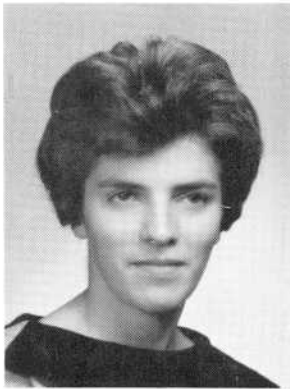
**ALFRED J. MELLO**

Band 2, 3, 4  
Rome Room Director 3, 4  
Portuguese Club 2, 3, 4  
Science Club 4



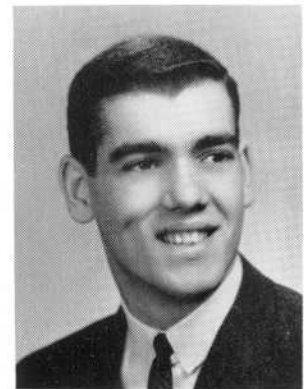
**ARTHUR MELLO**

Health Council 4



**BRENDA J. MELLO**

Junior Red Cross 1  
Basketball 2



**GERALD W. MELLO**

History Club 3  
National Honor Society 4



**RICHARD F. MELLO**

**BARBARA L. MELLOR**

National Honor Society 3, 4  
German Club 2, 3, Pres. 4  
Science Club 4  
Mathematics Club 4  
Glee Club 2  
Speakers Bureau 4

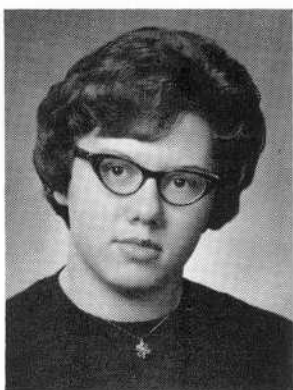


**J. EDWARD MERCIER**

**CAROL J. METRAS**

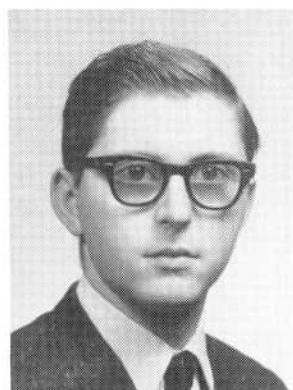
National Honor Society 4  
Class Secretary 1  
Volleyball 1, 2  
Library Aide 2, 3, 4  
French Club 2, 3, Pres. 4  
Spanish Club 4





**ANNA MEWALD**

Basketball 2, 3  
Volleyball 3  
Softball 3  
Numeral Club, Pres. 4

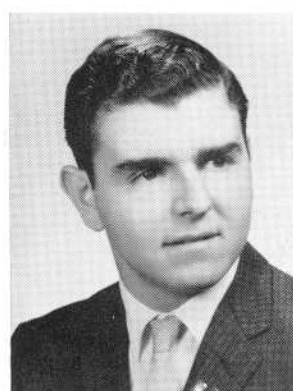


**JOHN A. MICHAELS**



**SANDRA D. MICHAUD**

Health Council 3  
Business Club 4  
Office Aide 4



**LUIZ V. MIRANDA**



**PAULA M. MIRANDA**

Music Club 3, 4  
Mixed Chorus 2, 3, 4  
Glee Club 2, 3, 4  
Silvertones 2, 3, 4  
Classical Club 2  
Dramatics Club 2



**SHARON A. MITCHELL**

Basketball 2



**CLAIRE A. MONIZ**

National Honor Society 4  
Numeral Club 2, 3, 4  
Library Aide 2, 3  
Basketball 2, 3  
Volleyball, Manager 3  
Portuguese Club 3, 4



**CYNTHIA A. MONIZ**

Portuguese Club 2, 3  
Basketball 2





**CYNTHIA A. MONIZ**

National Honor Society 3, 4  
Portuguese Club, Pres. 2, 3, 4  
Jazz Club 4  
Glee Club 2, 3, 4  
Home Room Director 2, 3

**DOROTHY A. MONIZ**

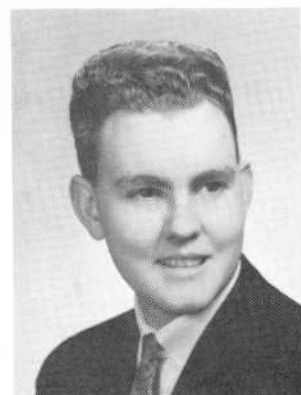
Baseball 2  
Portuguese Club 2, 3  
Junior Red Cross 2, 3  
National Honor Society 3, 4  
Business Club 4  
Office Aide 3, 4



**FRANK B. MONIZ**

**ROBERT MONIZ**

National Honor Society 3, 4  
Math. Club, Sec. and Tres. 4  
Debating Society 2, 4  
Speaking Bureau 4  
Classical Club 3, 4  
Science Club 4

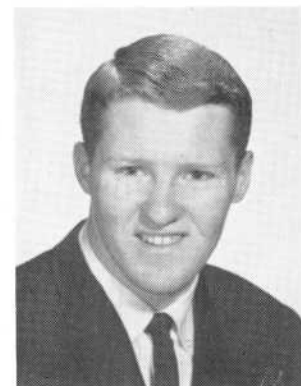
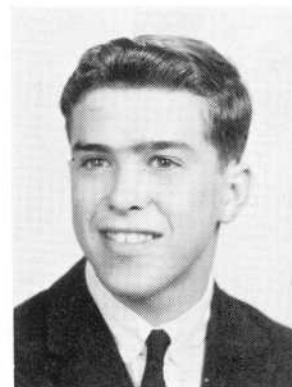


**ALAN E. MOSS**

Chess Club 4  
History Club 4

**RICHARD A. MULLEN**

Home Room Director 2

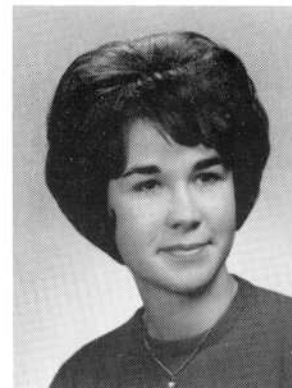


**MICHAEL K. MURPHY**

Track 3, 4  
Cross Country 4  
Varsity Club 3, 4

**SHIRLEY A. MURPHY**

Basketball 2  
Chess Club 4  
Jazz Club 4  
Dramatic Club 4  
Business Club 4





**WILLIAM MURPHY**



**BARBARA MURRAY**

Basketball 2



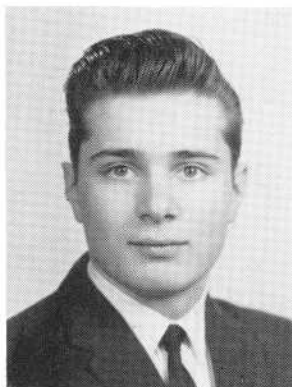
**ANN LOUISE NATALE**

Basketball 2  
Glee Club 2, 3  
Business Club 4



**JULIA THERESA NAWROCKI**

National Honor Society 4  
Cheerleader 3, 4  
Classical Club 2, 3, 4  
Home Room Director 4  
Health Councillor 3  
Basketball 2

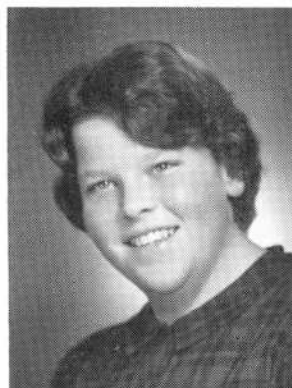


**WALTER S. NIEJADLIK**

Health Council 2



**ELSIE NOVERCA**



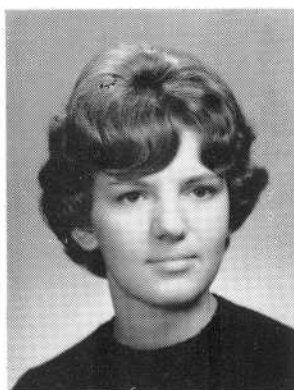
**DORIS R. NUTTALL**

Basketball 2  
Volleyball 2, 3  
Numeral Club 3, 4  
Firstball 2  
Softball 3



**CHARLES D. OHEARN**

Traffic Captain 4



**DONNA L. OLDRID**

National Honor Society 4  
 Debating Society 2, 3, 4  
 Classical Club 2, 3, 4  
 Dramatics Club 4  
 Literary Club 3



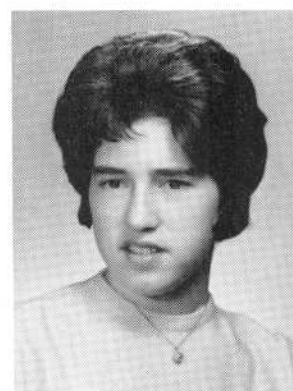
**BARBARA M. OLIVEIRA**

Volleyball 3  
 Basketball 4  
 Numeral Club 3, 4  
 Glee Club 2, 3  
 Softball 3  
 Basketball 2



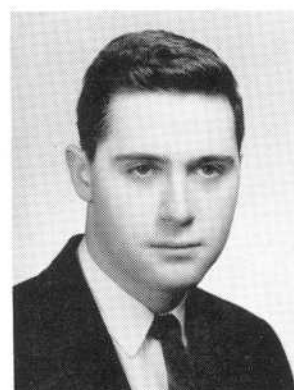
**BERNADETTE M. OLIVEIRA**

Basketball 3  
 Softball, Manager 3  
 Glee Club 3



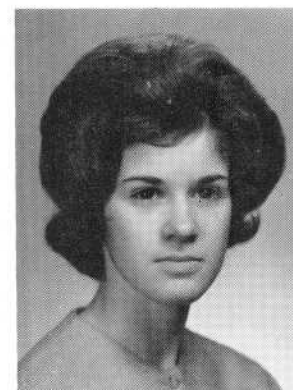
**JEAN E. OLIVEIRA**

Basketball 3, 4  
 Business Manager Hilltop 4  
 Dramatics Club 3  
 Science Club 2, 3, 4  
 Biology Lab Asst. 2



**JOHN J. OLIVEIRA**

Mixed Chorus 2, 3  
 Glee Club 2, 4  
 Serenaders 2  
 Portuguese Club 2, 3



**THERESA OLIVEIRA**

National Honor Society 4  
 Business Club, Pres. 4  
 Bank Cashier 4  
 Record Book Typist 4  
 Home Room Director 2  
 Office Aide 4



**VIVIAN S. OLIVEIRA**

Basketball 2  
 Portuguese Club 2, 3, 4  
 Business Club 4



**JEAN I. OLIVER**

Office Aide 2, 3, 4  
 Volleyball 2  
 Basketball 2  
 Business Club 4  
 Career Day Chairman 3  
 Fistball 2



**ROSEMARY OLIVER**

Band 2, 3, 4  
Orchestra 2, 3, 4  
Ensembles 2, 3  
National Honor Society 4



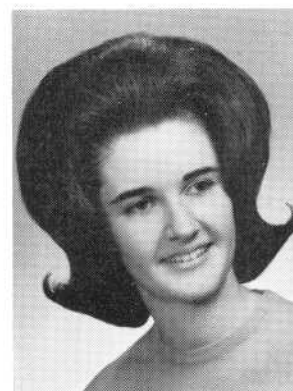
**ANN MARIE O'MELIA**

Glee Club 3, 4



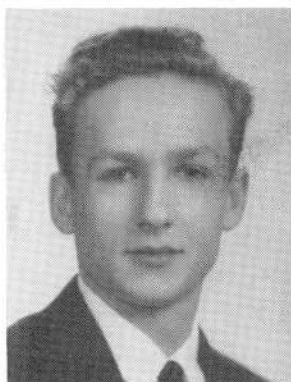
**BARBARA A. O'NEIL**

Basketball 1  
Volleyball 1  
Glee Club 2, 3



**FRANCINE M. O'NEIL**

Glee Club 2, 3  
Basketball 2  
Classical Club 3  
History Club 4  
Spanish Club 3



**LARRY C. OSTAPOW**

Glee Club 4  
Mixed Chorus 4



**CHERYL ANN PACHECO**

Basketball 2



**CLARA MARIA PACHECO**

Portuguese Club 2, 3, 4  
Basketball 2  
Business Club 4  
Glee Club 2



**ROBERT J. PACHECO**

Band 2, 3, 4  
Orchestra 3, 4  
Basketball 1  
Soccer 4  
Football 2  
Varsity Club 4

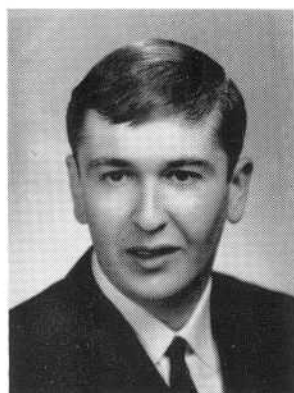


**ROBERT T. PACHECO**

Football 3  
Baseball 3

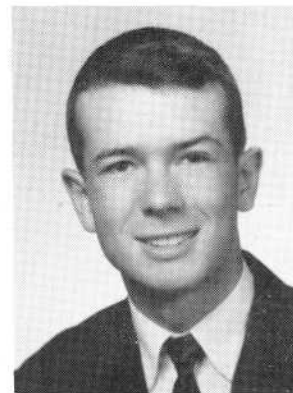


**ANTONE S. PAIVA**



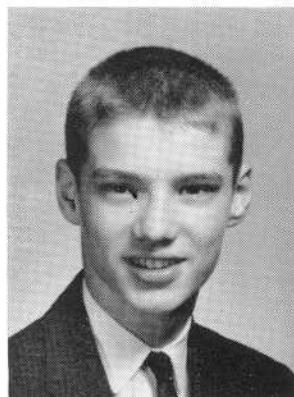
**DENNIS M. PAIVA**

Science Club 4  
German Club 4  
Mathematics Club 4  
National Honor Society 4



**EDWARD C. PALMER**

National Honor Society 4  
Science Club 3, 4  
Classical Club 3, 4  
Speaker Bureau 4  
Band 3  
Cadet Corps, 2nd Lt. 3, 4

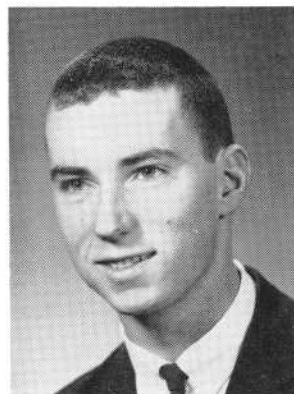


**THOMAS PASTERNAK**



**NANCY M. PAUL**

Glee Club 2  
Basketball 2  
Classical Club 3  
History Club 3, 4  
National Honor Society 3, 4



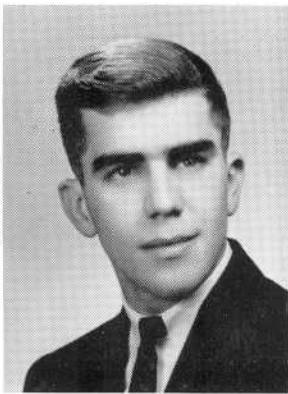
**ROBERT M. PAYER**



**MARJORIE A. PECKHAM**

Basketball 2

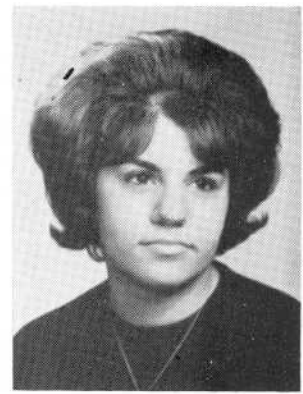




**CARLOS PEREIRA**

**JACQUELYN PEREIRA**

Portuguese Club 3, 4  
Glee Club 2, 3  
Bowling 4

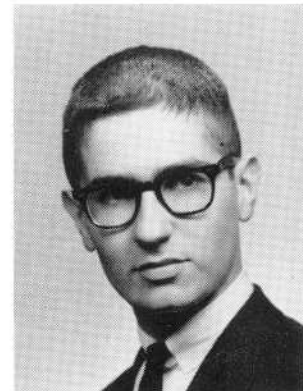


**MICHAELINE PEREIRA**

National Honor Society 4  
Hilltop Editor 4  
Mixed Chorus 3, 4  
Speakers Bureau 4  
Glee Club 3, 4  
Dramatics Club 2, 3

**STEPHEN B. PERLMAN**

National Honor Society, Pres. 3, 4  
Student Council 4  
Science Club 2, 3, 4  
Speakers Bureau 4  
Classical Club 3, 4  
Debating Society 3



**CYNTHIA A. PERRY**

Glee Club 2  
Portuguese Club 2, 3, 4

**VIVIAN M. PERRY**

Glee Club 2, 3  
Portuguese Club 2, 3, 4



**PAUL O. PHENIX**

Traffic 4

**THERESA M. PICHE**

National Honor Society 4  
Home Room Director 2, 3  
Glee Club 2, 3  
Business Club, Vice-Pres. 4  
Bank Cashier 2, 3  
Basketball 2





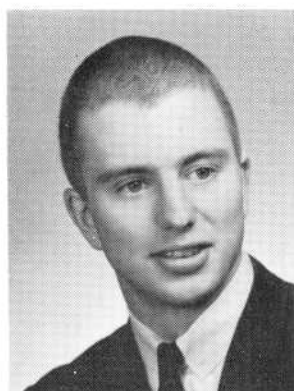
**MARGARET PICKERING**

Editor Record Book 4  
National Honor Society 3, 4  
Classical Club 3, 4  
German Club 2, 3, 4  
Basketball 2



**LOIS A. PIERONI**

Health Council 2  
Spanish Club 4  
History Club 4



**GERALD F. PIETRUSKA**

Tennis 3, 4  
Home Room Director 2, 4  
Band 4  
Orchestra 4



**PAULA J. PIETRUSKA**

Basketball 2  
Fistball 2  
Jr. Red Cross Club 2, 3, 4  
Jr. Hospital Volunteer 2



**BARBARA ANN PILACIK**

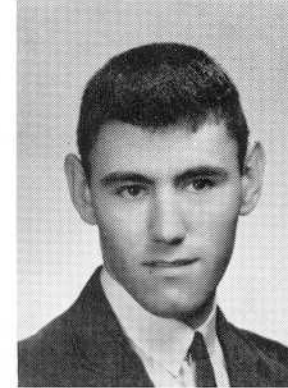


**LORRAINE G. PINEAU**



**MARJORIE PIRES**

Glee Club 2  
Business Club 4  
Office Aide 4



**THOMAS R. POLETE**



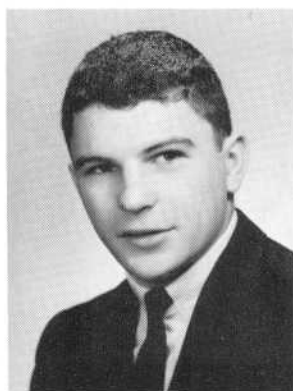
**E. JEFFREY PONTIFF**

Cadet Corps, Captain 3, 4  
Science Club 4  
Football 3  
Home Room Director 3



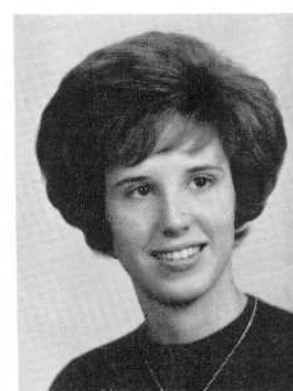
**ROBERTA LOIS PROULX**

German Club 3, 4  
Music Club 4  
Red Cross Volunteer 3



**THOMAS H. PRUNEAU**

Basketball 1  
Portuguese Club 4



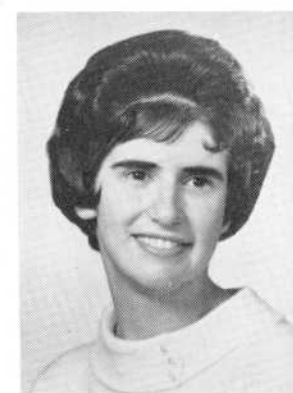
**MARGARET M. RAGSDALE**

Basketball 2  
History Club 2, 3  
Majorettes 3  
Head Majorette 4  
Debating Society 4  
Science Clubs 4



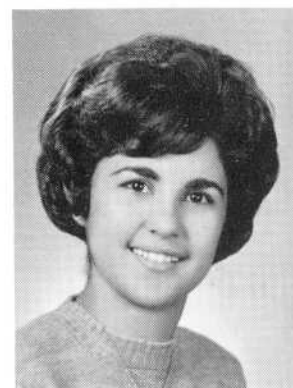
**BEVERLY A. RAMOS**

National Honor Society 3, 4  
Dramatics Club 2, 3, 4  
National Thespian Society 3, 4  
Science Club 4  
Home Room Director 2, 4  
Classical Club 3



**GLORIA A. RAPOSA**

Glee Club 2, 3  
Basketball 2  
Business Club 4  
Gym Leader 3  
Jr. Red Cross 2  
Portuguese Club 2



**MARGARET A. RAPOSA**

Glee Club 2, 4  
Portuguese Club 2, 3, 4  
Basketball 2



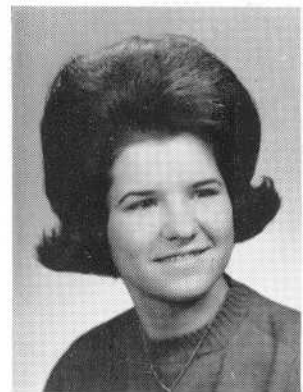
**SHEILA M. RAPOSA**

Portuguese Club 2, 3, 4



**NANCY ROSE RAPOZA**

Basketball 2

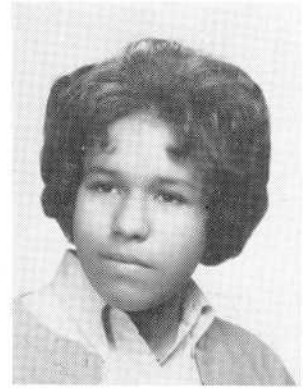


**BETTY LOU READ**



**MARIA S. REBELLO**

Glee Club 2, 3, 4  
Mixed Chorus 3, 4  
Portuguese Club 2, 3, 4



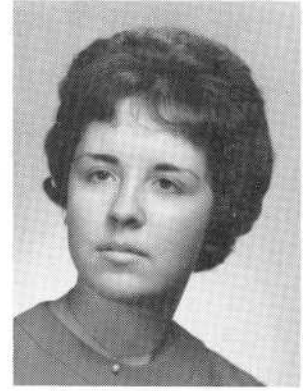
**JANICE B. REED**

Softball 3  
Volleyball 3  
Health Council 2  
Basketball, Coach 2, 4  
Gym Leader 4



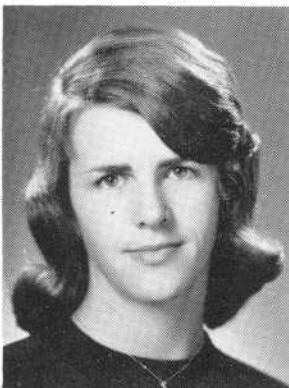
**JEFFREY R. REGO**

Band 2, 3, 4  
Home Room Director 2



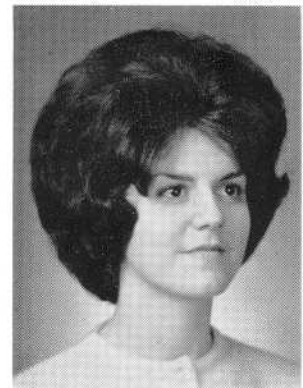
**KATHLEEN A. REGO**

Basketball 2  
Portuguese Club 2, 3



**LINDA REID**

Baseball 2  
Volleyball 2



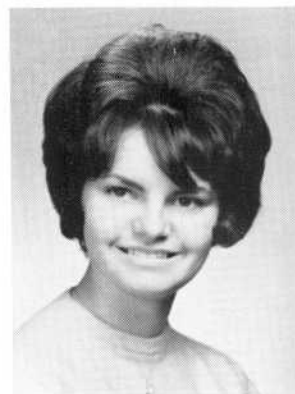
**MARY A. REIS**

Record Book Typist 4  
Athletic Association Typist 4  
Bank Cashier 4  
Business Club 4  
Office Aide 4



**JOAN A. RENN**

Basketball 2  
Office Aide 4  
Business Club 4  
Health Councillor 3



**CHERYL ANN REZENDES**



**GERALDINE S. REZENDES**

Portuguese Club, Sec. 2 3  
Home Room Director 2  
Numeral Club 2, 3, 4  
Basketball 4

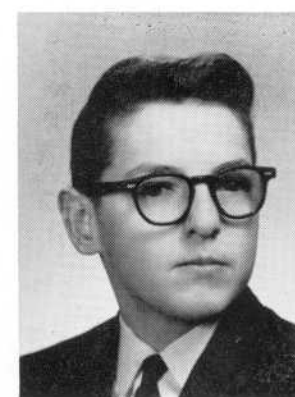


**PATRICIA A. RICHARD**

Basketball Manager 4  
Numeral Club 3, 4  
Volleyball 2  
Basketball 2  
Softball 3  
Glee Club 2, 3, 4

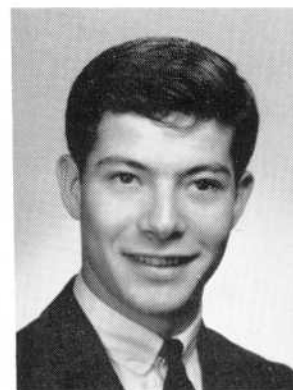


**ROBERT A. RIGBY**



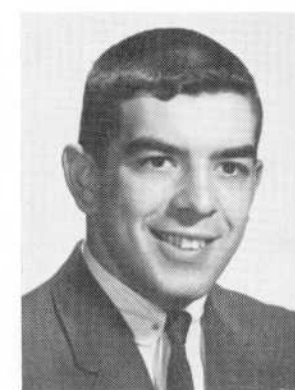
**FRANCIS M. RILEY**

Health Councillor 2



**THOMAS P. RILEY**

Home Room Director 2  
Chess Club 4



**ROBERT ROBERTS**





**ALAN T. ROBILLARD**

Football 3, 4  
Baseball 3, 4



**EDMUND J. ROCHA**

Portuguese Club 2  
Cadet Corps 3, 4

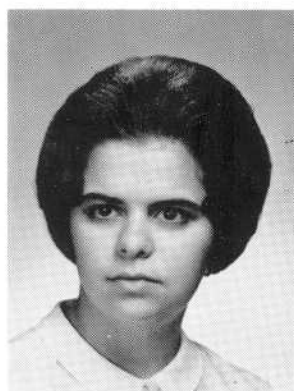


**FLORENCE G. ROCHA**

Glee Club 2  
Russian Club 3

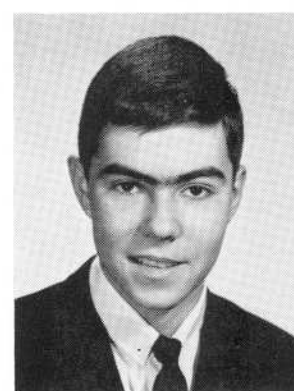


**GERALDINE ROGERS**



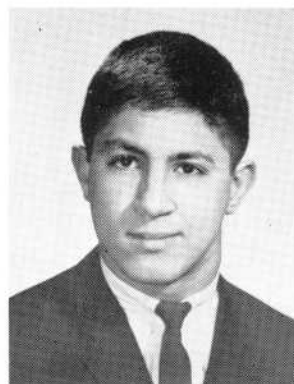
**JUDITH M. ROGERS**

Noontime Music 4



**JAMES E. ROMANO**

Basketball 2, 3  
Soccer 2, 3



**RAYMOND L. ROSA**

Football 2, 3, 4  
Baseball 2, 3  
Health Councillor 2



**ELIZABETH A. ROSS**

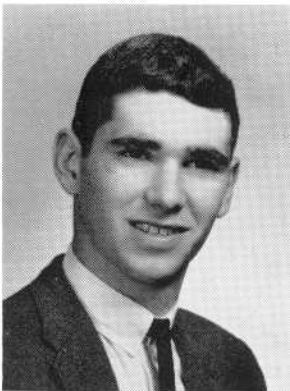
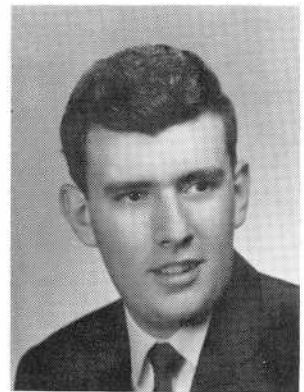
Glee Club 2, 3



**LISA B. ROTENBERG**

National Honor Society 4  
French Club, Tres. 2, 3, 4  
Classical Club 2, 3, 4  
Hilltop Staff 4  
Record Book, Asst. Bus. Mgr. 4  
Science Club 2, 3, 4

**PAUL ROUSSEAU**



**RAYMOND W. RUA**

Home Room Director 2, 3

**ANNE F. RUDDICK**

Basketball 2  
Volleyball 2  
Badminton 3



**JAMES ARTHUR RYAN**

Football 2

**THERESA ANN RYAN**

Glee Club 2  
Classical Club 2, 3, 4  
National Honor Society 4



**SUSAN J. RYERSON**

Class Vice-President 1, 2, 3, 4  
Student Council 4  
Speakers Bureau 2, 3, 4  
Home Room Director 3, 4  
Basketball 4  
Hilltop Staff 4

**FREDA MARIE SABER**

World History Club 3, 4  
Spanish Club 4



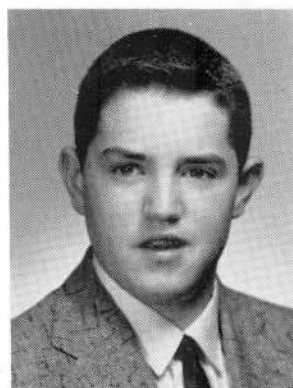


**GABRIELLE ANN SABER**

World History Club 3, 4  
Glee Club 2, 3, 4  
Mixed Chorus 3, 4  
Spanish Club 3, 4

**TERRENCE PAUL ST. SING**

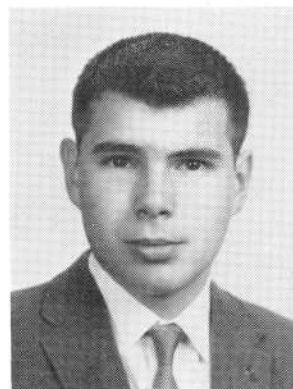
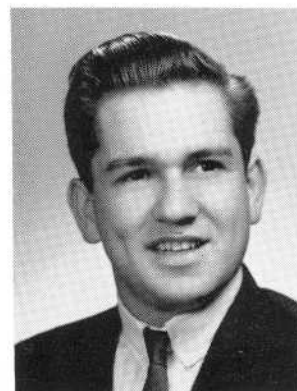
Classical Club 3, 4  
Science Club 3  
National Honor Society 3, 4  
Spanish Club 4  
Home Room Director 4



**ELAINE SAN MARCOS**

Basketball 2  
Glee Club 3

**JOHN EDWARD SANSON**

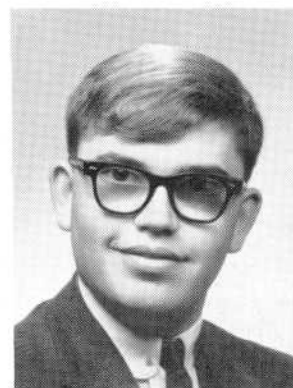
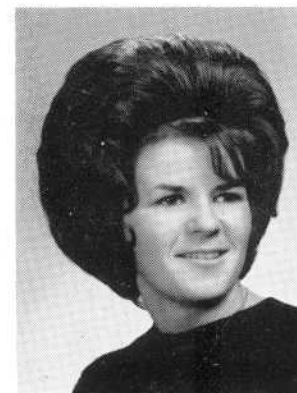


**GERALD PAUL SANTOS**

Portuguese Club 2

**JUDITH ANN SANTOS**

Glee Club 2  
Office Aide 4  
National Honor Society 4

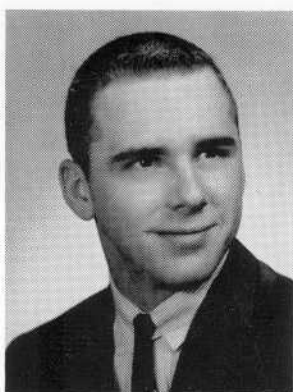


**MICHAEL A. SANTOS**

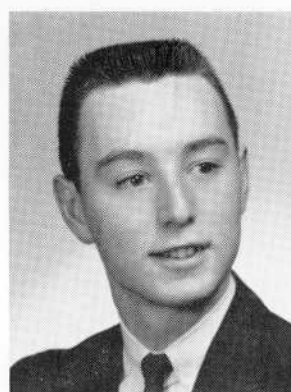
Glee Club 2  
Portuguese Club 2, 3

**RUTH-ANN SANTOS**



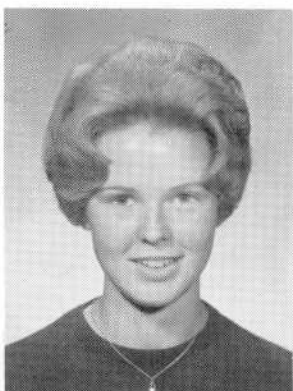


**RAYMOND SAUCIER**



**EDWARD A. SAURETTE**

Chess Club 3  
World History Club 3



**JOYCE ARLENE SAURETTE**

Health Club, Pres. 2  
Spanish Club, Sec. 3  
Science Club 3  
Basketball 2  
Glee Club 2  
Future Scientists 3



**VIRGINIA ELAINE SAURETTE**

Class Secretary 2, 3, 4  
Student Council 4  
Health Councilor 4  
Science Club 4  
Spanish Club 3  
Prom Committee 3



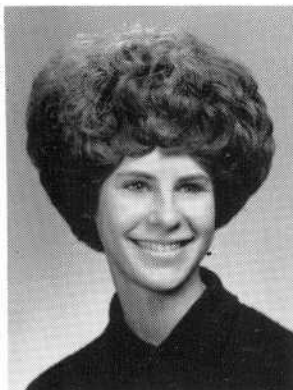
**DONNA L. SCHAFER**

Spanish Club, Sec.-Tres. 3, 4  
Classical Club 2, 3, 4  
World History Club, Capt. 3, 4  
Science Club 3, 4  
Chess Club 3  
Music Appreciation Club 4



**MAXINE CAROL SCHENKER**

Debate Society 2, 4  
Spanish Club 4  
Glee Club 2, 3  
Science Club 4  
World History Club 4



**SYLVIA SCHWARTZ**

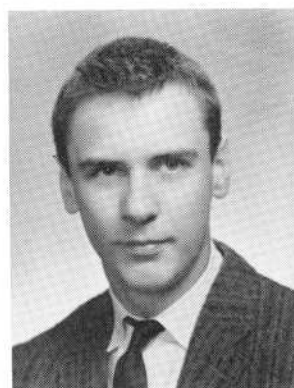
National Honor Society 4  
Basketball 2  
Bank Cashier 4  
Record Book Typist 4  
Business Club 4  
Office Aide 4



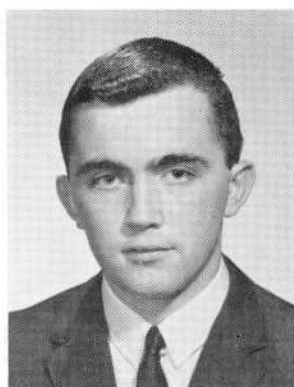
**MICHAEL SHAUGHNESSY**



**KAREN ANN SHAW**  
Basketball 2



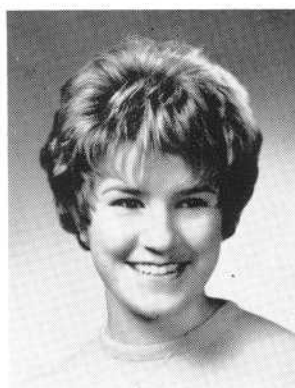
**LLOYD H. SHERMAN**



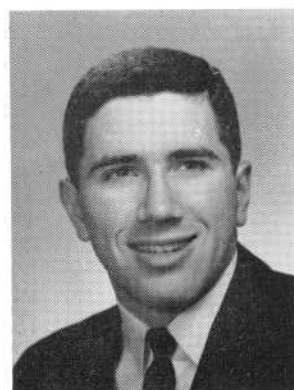
**NORMAN E. SHERMAN**  
Home Room Director 2  
Football 3  
French Club 2, 3



**LINDA ANN SHERWIN**  
Science Club 3, 4  
Future Scientists 3, 4  
World History Club 4  
Spanish Club 4



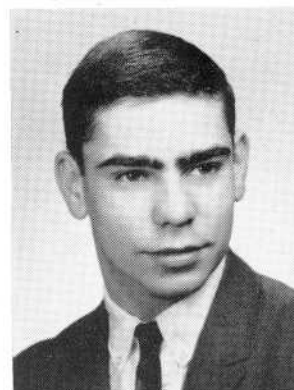
**CLARE INA SHIFRIN**  
Basketball, Capt. 2  
Sanitation Commission, Sec. 3  
Vocataires 3, 4  
Spanish Club 4, Vice-Pres. 3  
Jazz Society 4  
Science Club 4



**EDWARD REAGAN SIEGFRIED**  
Basketball 2, 3, 4  
Science Club 4  
Home Room Director 3  
Spanish Club 2

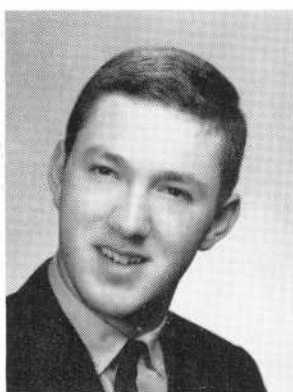


**CAROL ANN SILVA**  
Glee Club 2  
Business Club 4  
Office Aide 3, 4  
National Honor Society 4



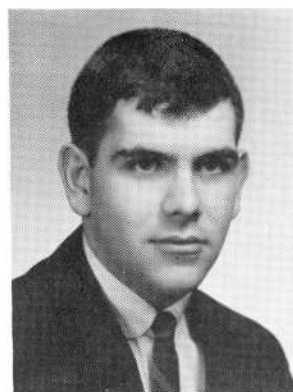
**DONALD E. SILVA**





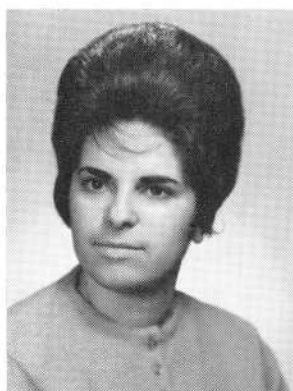
**CHARLES EDWARD SILVIA**

Cross Country 3  
Track 4  
Tennis 4

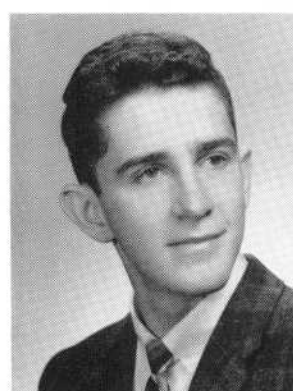


**JAMES E. SILVIA**

Portuguese Club 2, 3  
Basketball 2

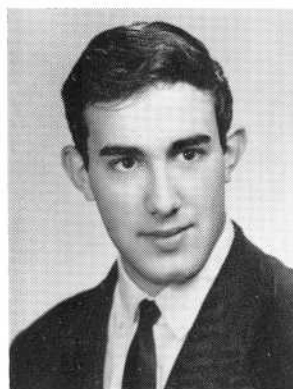


**PAULINE MARIE SILVIA**



**WOODROW L. SILVIA**

Hilltop Staff 4  
National Honor Society 4



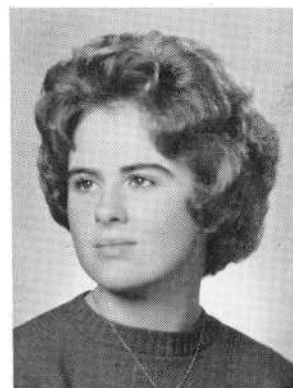
**LEONARD SIMOES**

Glee Club 3  
Mixed Chorus 3  
Serenaders 4



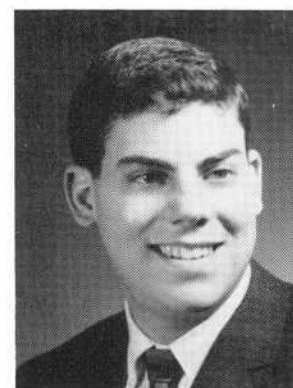
**GAIL SISSON**

National Honor Society 3, 4  
Glee Club 2  
Office Aide 2, 4  
Health Councillor 3



**JOYCE ANGELA SKOWRON**

Numerical Club 2, 3, 4  
Glee Club 2, 4  
Mixed Chorus 4  
J. V. Basketball 2, 3  
Gym Leader 3  
Vocalaires 4



**BARRY HOWARD SLAVEN**

National Honor Society 4  
Dramatic Club 2, Treas. 3, 4  
National Thespian Society 3, 4  
Science Club 4  
Speakers' Bureau 4  
Sanitation Commission 4



**VINCENT LAWRENCE SMERIGLIO**

Cadet Corps 3, 4  
 Classical Club, Vice-Pres. 3, 4  
 Mathematics Club 4  
 National Honor Society 3, 4  
 Speakers' Bureau, Vice-Pres. 4



**ALISON LARAIN SMITH**

Jazz Society 4  
 Glee Club 2, 3  
 Basketball 2  
 Science Club 3  
 Hilltop Staff 4



**MARILYN LOUISE SMITH**

Basketball 2  
 World History Club 4  
 Spanish Club 4



**SUSAN MARIE SMITH**

World History Club 4  
 Health Councillor 1  
 Science Club 4  
 Basketball 2  
 Volleyball 1, 2



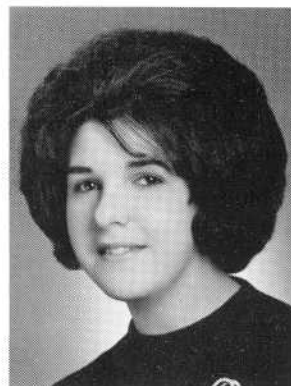
**CAROL RUTH SNYDER**

Glee Club 2  
 Science Club 3



**EILEEN MARIE SOARES**

Glee Club 2, 3, 4  
 Portuguese Club 2, 3  
 Basketball 2



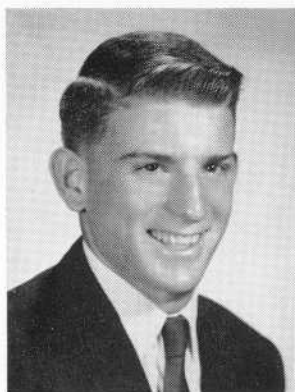
**MARIA N. SOARES**

National Honor Society 4  
 Home Room Director 2  
 Business Club 4  
 Office Aide 4  
 Portuguese Club 2, 3  
 Glee Club 2



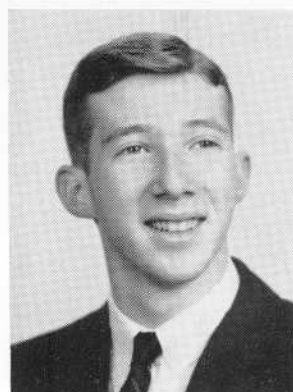
**MAUREEN LOUISE SOARES**

Glee Club 2  
 World History Club 2, 3  
 Speakers' Bureau 3  
 Health Councillor 2, 3



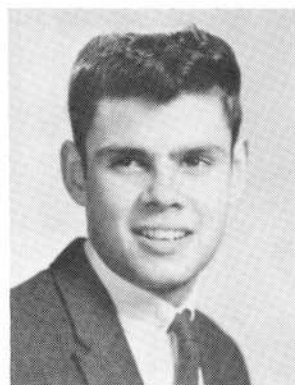
**DONALD CLYDE SOLMON**

Track 2, 3, 4  
Football 2, 3, 4



**NORMAN RAYMOND SOMER**

Speakers Bureau 4  
Home Room Director 2



**WILLIAM SOTNICK**



**EUGENE J. SOUSA**

Football 3, 4  
Portuguese Club 2, 3, 4



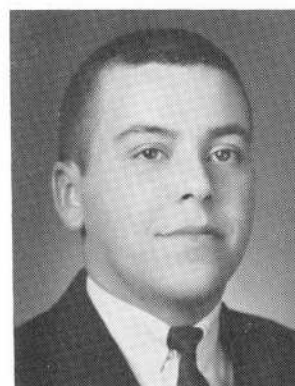
**LINDA ANN SOUSA**

Glee Club 2  
Portuguese Club 2

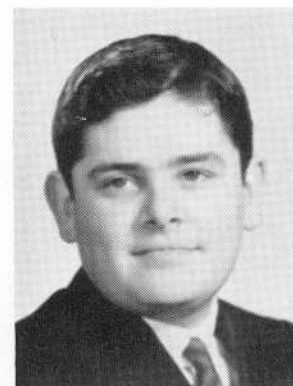


**MARY I. SOUSA**

Basketball 2  
Glee Club 2, 3  
Portuguese Club 2, 3



**DAVID SOUZA**



**JOSEPH PETER SOUZA**

Lab. Assistant 3, 4  
Dramatics Club 2

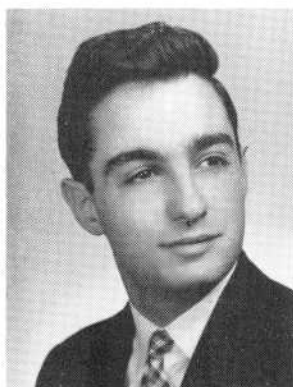


**MADELINE M. SOUZA**



**MARGARET SOUZA**

Glee Club 2



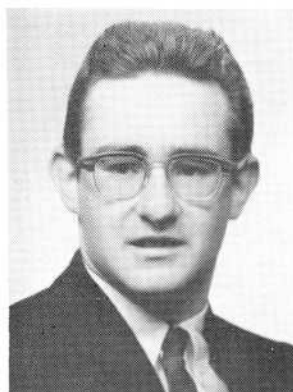
**RAYMOND FRANCIS SOUZA**

Band 2, 3, 4



**VANESSA ANN SOUZA**

Basketball 2  
Glee Club 2  
Spanish Club 3, 4  
German Club 3, 4  
Science Club 4



**WILLIAM SOUZA**

Glee Club 4  
Mixed Chorus 4



**MARJORIE FRANCES SPEIER**

Debate Society 2, 3, 4  
Classical Club 2, 3, 4  
German Club 2, 3, 4  
French Club 3, Sec. 4  
National Honor Society 3, 4  
Speakers Bureau 4



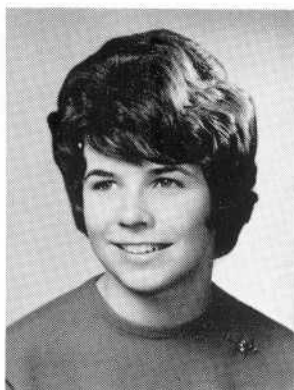
**HELENE SANDRA SPIEWAK**

Science Club 2, 4  
Music Appreciation Club 4  
Chess Club 3  
World History Club 3, 4  
Future Scientists 4  
Spanish Club 3, 4



**DAWN M. SPRINGER**

Mixed Chorus 3  
Glee Club 3  
Spanish Club 3



**PATRICIA JANE SPRINGER**

Dramatic Club 2, Vice-Pres. 3, Pres. 4  
National Thespian Society 3, 4  
Jazz Society 4  
Science Club 3, 4  
National Honor Society 3, 4  
Speakers' Bureau 4

**THOMAS J. SROCZYNSKI**

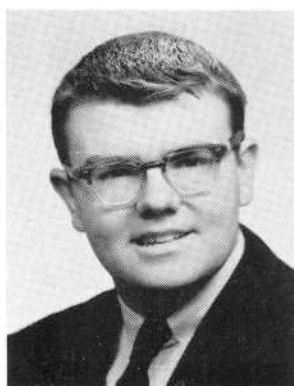


**MARY LOUISE STAPLETON**

Glee Club 2, 3

**BETTIE ANN STARR**

Classical Club 2  
Science Club 3  
German Club 3, 4  
National Honor Society 3, 4  
Speakers Bureau 4  
Biological Society 3

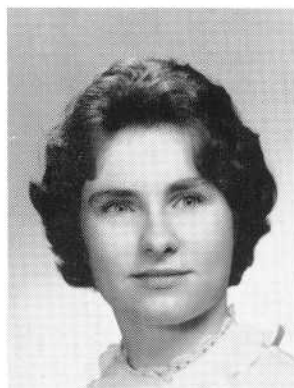


**BRADLEY HAROLD STEEVER**

Golf 2, 3, 4

**MARIE LETITIA STETKIEWICZ**

Spanish Club 2  
Classical Club 4  
Cheerleader 3, Head 4  
Home Room Director 4  
National Honor Society 4



**LESLIE JEANNE STEWART**

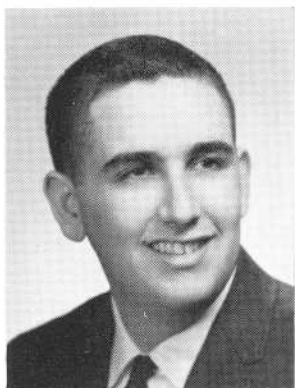
National Honor Society 4  
Dramatics Club 2,  
Recorder 3, Vice-Pres. 4  
National Thespian Society 3, Pres. 4  
Science Club 3, 4  
Biology Lab Assistant 2, 4

**JANICE STONE**

Glee Club 2  
Basketball 2







**SPENCER M. STROLSKY**

**BETTY ANN SUGARMAN**

National Honor Society 4  
 Classical Club 2, 3, 4  
 Debate Society, Vice-Pres. 2, 3, 4  
 Home Room Director 2, 3  
 Science Club 3, 4  
 Speakers Bureau 4

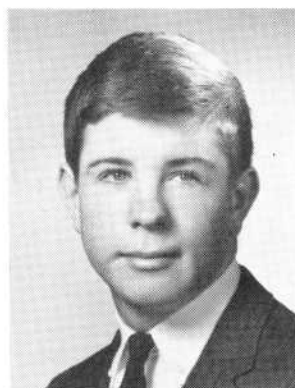
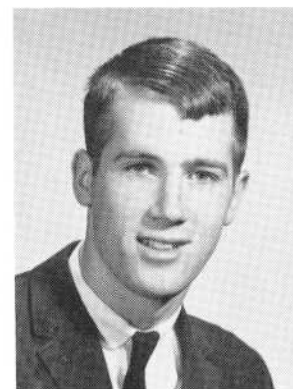


**CLAUDIA SULLIVAN**

Glee Club 3

**JOHN MICHAEL SULLIVAN**

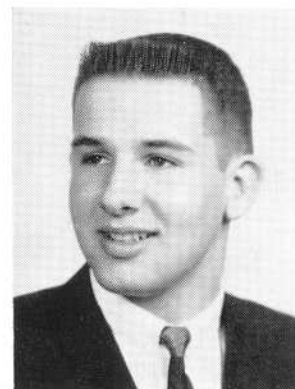
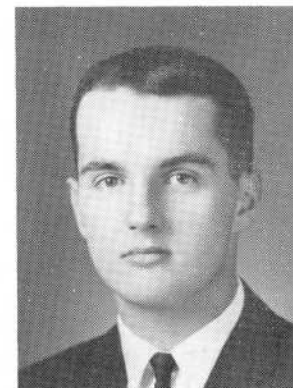
Basketball 4  
 Track 4



**MICHAEL JAMES SULLIVAN**

S.A.A. Sec.2, Vice-Pres. 3, Pres. 4  
 National Honor Society 3, 4  
 Speakers Bureau 2, 3, 4  
 Home Room Director 2, 3, 4  
 Science Club 3, 4  
 Jazz Society 4

**ROGER J. SULLIVAN**



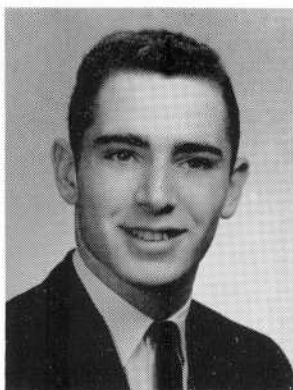
**GEORGE HOWARD SYLVIA JR.**

Band 2, 3, 4

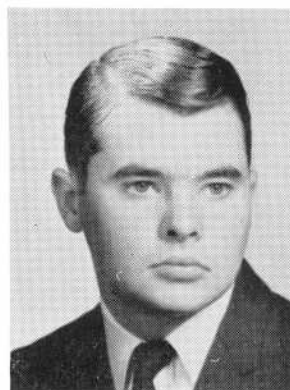
**CAROL H. SWIST**

Glee Club 2, 3



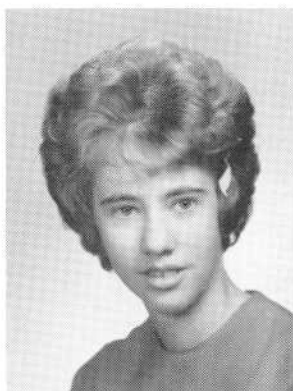


**KENNETH E. SZELAG**



**EDWARD F. SZYNAL**

Hilltop Staff 4  
Sports Editor, Record Book 4



**ELEANOR ANN SZYNAL**



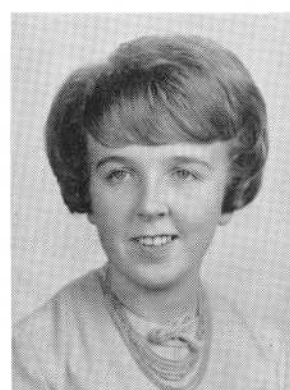
**JUDITH ANN TACOVELLI**

Health Councilor 1  
Sanitation Commission 1  
Glee Club 2, 3  
Office Aide 4  
Basketball 2



**BETTE MAY TAYLOR**

Home Room Director 1  
Basketball 2  
Tournament Captain 2  
Volleyball 2



**CAROL ANNE TAYLOR**



**JAMES MICHAEL TAYLOR**

Glee Club 2  
World History Club 3



**EDWIN LIONEL TEAL**

Glee Club 2  
Bowling 3



**JANET OLIVE TERCEIRO**  
Portuguese Club 3, 4



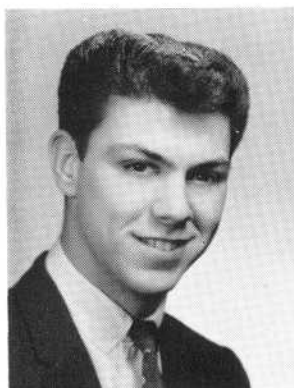
**CAROLYN BOOTH THOMAS**  
Glee Club 2, 3  
Basketball 2



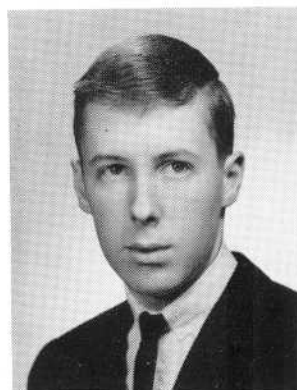
**LINDA JOYCE THOMAS**  
Classical Club 3, 4



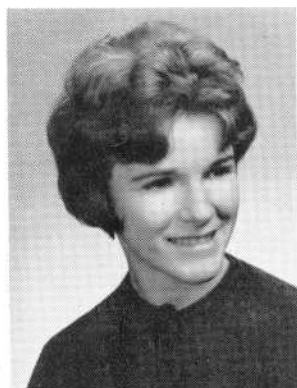
**VERONICA ANN THOMAS**  
Basketball 2  
Glee Club 2, 3  
Portuguese Club 3



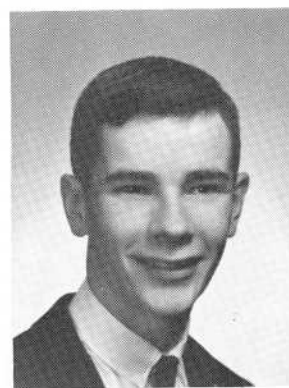
**PETER K. THORPE**



**RICHARD THORPE**



**KATHLEEN MARY TIMBERLAKE**  
National Honor Society 4  
Classical Club 3, 4  
Spanish Club, Pres. 3, 4  
Library Aide 4  
Health Councilor 4  
Sanitation Commission 4

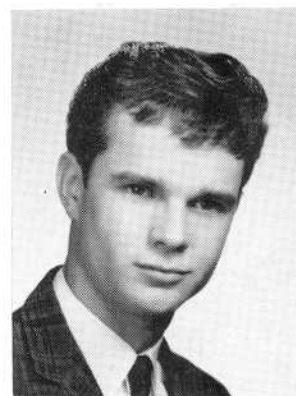


**NORMAN EUGENE TIMBERLAKE**  
World History Club 3, 4  
Spanish Club 3, 4  
Home Room Director 4

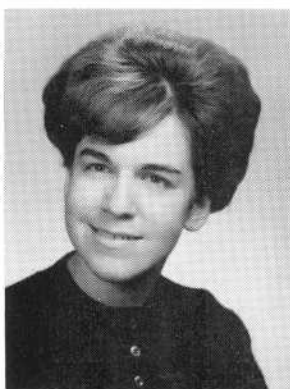


**SHIRLEY ANN TOBERSON**

Glee Club 2, 3  
Office Aide 4  
National Honor Society 3, 4

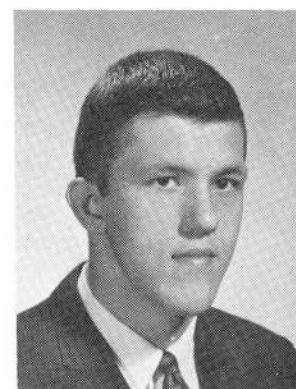


**THOMAS PAUL TOUPIN**



**REBECCA ELLEN TRIEFF**

Speakers Bureau 2  
Science Club 3  
Classical Club 4  
National Honor Society 3, 4  
French Club 3



**PAUL EDWIN TRZESINSKI**

Football 3, 4



**JOHN TUNNEY**



**EDWARD PHILIP TURCOTTE**

Basketball 2  
Football 3



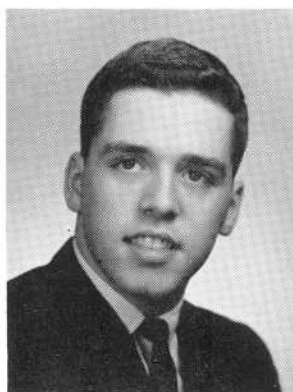
**JANE MARIA TURGEON**

Office Aide 4  
Basketball 2  
Softball 2  
Record Book Typist 4

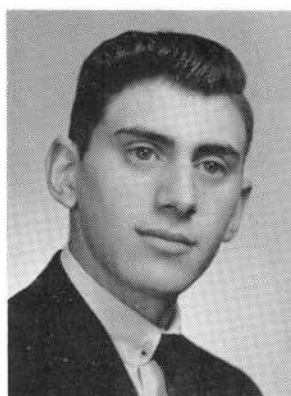


**JANICE R. TURNER**

Glee Club 2  
Classical Club 4

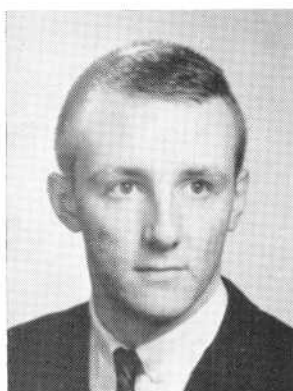


**ROBERT OLIVER TURNER**



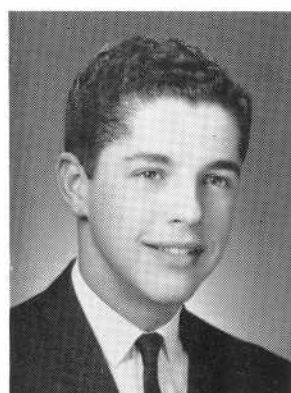
**PETER PRIMO TURRIANI**

Dramatics Club 2



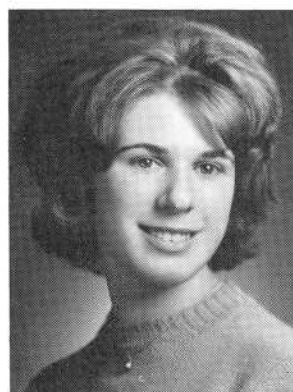
**KENNETH EDWARD VADEBONCOEUR**

Dramatics Club 4



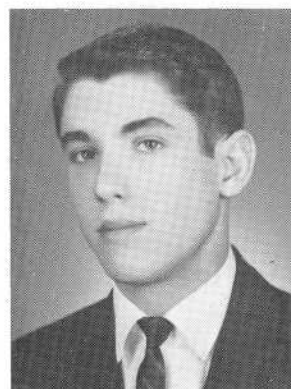
**RICHARD GEORGE VAILLANCOURT**

Track 4



**CAROL A. VALCOURT**

Glee Club 2



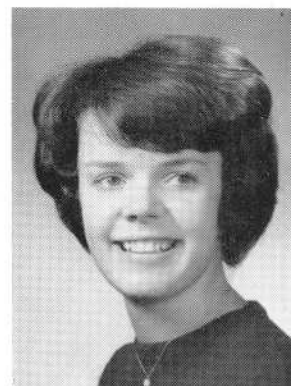
**MANUEL MICHAEL VALE**

Baseball 1  
Basketball 1



**WILLIAM JOSEPH VIEIRA**

Portuguese Club 3, 4  
Basketball 1



**CAROLYN MILDRED WAITE**

Spanish Club 3, 4  
Home Room Director 2, 3, 4  
Hilltop Staff 4  
Silvertones 3, 4  
Glee Club 2, 3  
Mixed Chorus 3, 4



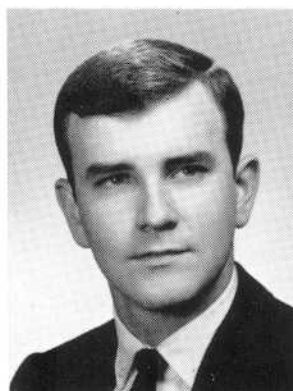


**JOAN ELIZABETH WAITE**

Classical Club 3  
Portuguese Club 3, 4  
Bowling 3, 4  
World History Club 4  
Basketball 2

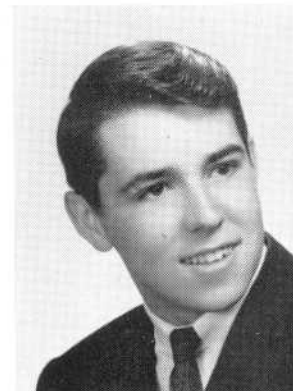


**JOHN JOSEPH WALSH**

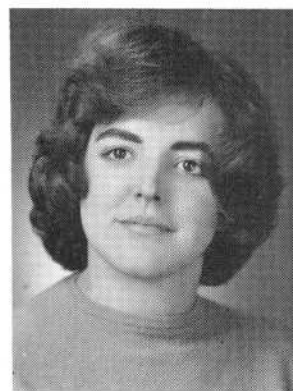


**DAVID ALAN WARD**

Home Room Director 2, 3  
Mathematics Club 3  
Football 3



**ALAN ROBERT WELCHMAN**



**DIANE AVIS WHITFIELD**

Dramatics Club 2, 3, 4  
National Thespian Society 3, 4  
Speakers Bureau 4



**DAVID NORMAN WILDING**



**EVELYN LORETTA WILLS**

First Aid 2



**BARBARA L. WILSON**

Basketball 2  
Dramatics Club 2

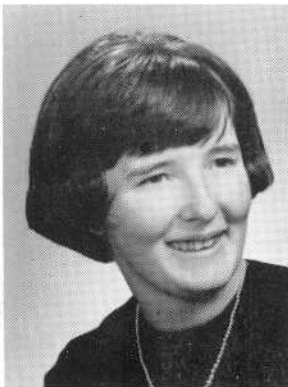
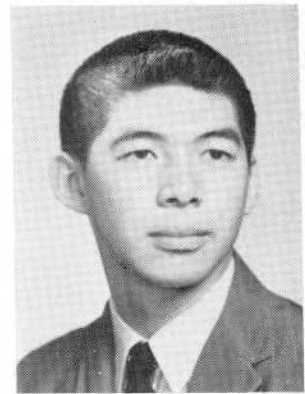


**MARCIA MOLLY WISEMON**

National Honor Society 4  
Basketball 2  
Debate Society 2, 3, 4  
Science Club 3, 4  
German Club 2, 3, Vice-Pres. 4  
World History Club 2, 3, 4

**JOSEPH S. WONG**

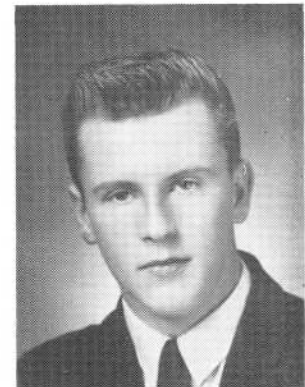
Mathematics Club 3  
World History Club 2



**DONNA MARIE WOODWARD**

Numerical Club 2, 3, 4  
Basketball 2, 3, 4  
Softball 3, 4  
Volleyball 3  
Basketball Referee 2, 3, 4  
Glee Club 2

**LOUIS EARL P. YENTZ JR.**



**GLORIA JEAN YOUNG**

**JANE ADAMS YULE**

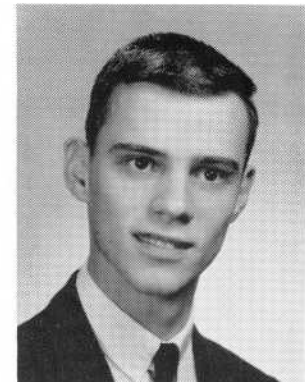
Glee Club 2  
Basketball 2  
Health Councillor 2, 3  
Sanitation Commission, Vice-Pres. 3  
Spanish Club 3



**JAMES THOMAS ZEMBO**

**PAUL E. ZMUDA**

German Club 4





**BARBARA RUTH ZUKROFF**

National Honor Society 3, 4  
Classical Club, Sec. 3, Pres. 4  
Speakers Bureau 4  
Science Club 3, 4  
Vocals 3, 4  
Mixed Chorus 3, 4



**JOHN F. DEAN**

Cadet Corps 3, 4  
Mixed Chorus 4  
Glee Club 4

ELIZABETH A. AIELLO  
KENNETH W. ASHWORTH  
ROBERT A. BEDARD  
JAMES BERNARD  
RENE BERNIER  
ROBERT M. BLAIS  
GILBERT J. BOUCHARD  
MITCHELL J. BSHARA  
DANIEL J. CALLAHAN  
JOHN J. CAMARA  
JAMES F. CHOWN  
GLENN COLLINS  
ALBERT E. CORSCADDEN  
ROGER G. DASTOUS  
WILLIAM P. D'ELIA  
MARC C. deVILLERS  
KENNETH E. DUCKWORTH  
MAURICE R. DUPUIS  
CARL R. FISHER  
CHARLES FITZGERALD  
PATRICK J. FOLEY  
RAYMOND FORREST  
JOSEPH E. FURTADO  
WILLIAM R. GRAHAM  
DONALD J. HART  
MICHAEL E. HART  
WILLIAM HERBERT

FRANK J. JUST  
GALE P. KING  
DONALD J. P. LINDSAY  
TANYA LITAWAY  
JOSEPH MAGRIBY  
GEORGE MALANDRA  
JESSE MARTIN  
JOSEPH MARTINS  
MICHAEL McCORMICK  
JOYCE R. MEDEIROS  
CHERYL A. MELLO  
CAROL A. MICHAUD  
JOSEPH P. MLYNEK  
DOROTHY M. MONIZ  
GERALD MUNROE  
BERNARD H. PAQUETTE  
RICHARD C. PAQUETTE  
BRADFORD H. PETTY  
HARRY T. POWERS  
RICHARD RAVENELLE  
KENNETH C. RICHARDS  
LOUIS P. ROSSI  
ROLAND A. SAMPSON  
ROBERT M. SILVIA  
GERALD J. SMITH  
MANUEL VASCONCELLES  
GEORGE WHITE



# D ACTIVITIES





Left to right, seated — V. Saurette, J. Reed, M. Sullivan, L. Reed, J. Strollo. Standing—S. Perlman, L. Banks, I. Costa, S. Ryerson, C. Parker, E. Berube, J. Isidor, N. Kulpa, B. Duckett, E. Baker.

## STUDENTS' ACTIVITIES ASSOCIATION

The Students' Activities Association was established to bring all extra-curricular activities under the direction of a central organization. This is the only organization which is open to all Durfee students.

As the governing body of the S.A.A., the student council is responsible for the organization and direction of school social functions. This year the sophomore and junior vice-presidents and secretaries were admitted to the council to replace the freshman representatives.

Each year the council issues guide books to Sophomores. Twice a year representatives are sent to conventions. The council also selects the recipient of the Jewish War Veterans award.

A membership contest and drive were held in March. Assemblies under the direction of the council included a concert in May by the Newport Navy Band. For the first time the planning of the Junior Prom was also undertaken by this group.

The recognition assembly in May honored students who have demonstrated outstanding leadership, scholarship and service.

Officers are President Michael Sullivan '63, Vice-President Joan Reed '64, and Secretary Lois Reed '65.

Faculty advisors are Mr. Samuel Swidey and Miss Dorothy Urban.





Left to right—J. Cisek, S. Schwartz, T. Oliveira, M. Reis.

## BANK CASHIERS

Many students take part in a savings program every Tuesday.

Deposits are collected in home rooms after the opening exercises by the directors. The money is then placed with bankbooks in a large envelope, which is then delivered to the cashiers either in the Durfee or the Technical building.

Cashiers write down on a home-room list the amount collected by each home room and then place the envelopes in large canvas bank bags. These bags are then locked and later picked up by agents from the B.M.C. Durfee Trust Company.

Miss Katherine L. Hogan, faculty director of this activity, selected the following as cashiers: June Cisek, Theresa Oliveira, Mary Ann Reis and Sylvia Schwartz.



Left to right—T. Oliveira, T. Piche, R. Kulpa.

## **BUSINESS CLUB**

In 1929 the Business Education Club was organized and since that time its members have taken an active part in school activities. Membership is limited to seniors who receive 80 per cent or higher in two four or five-period subjects, with no grade lower than 70 per cent.

Throughout the year, instead of having a study period, members work in the offices of the Durfee and Technical buildings, in the guidance office and also as secretaries to heads of departments. During January and March the NOMA spelling and, this year for the first time, the NOMA arithmetic tests were given to the seniors. A trip was planned in May to Boston to visit the John Hancock Insurance Company and the State House. An awards assembly was held in June, and the business faculty was invited to a party held before graduation.

Club officers for the year were President Theresa Oliveira, Vice-President and Treasurer Theresa Piche, and Secretary Irene Kulpa. Miss Katherine L. Hogan, head of the business department, is faculty advisor.



Left to right—P. Petri, B. McMahon.

## CHESS CLUB

The Chess Club has embarked upon a variety of new programs during the 1962-63 school year. Through a close affiliation with the Rhode Island Chess Association and the Fall River Adult Chess Club, members were afforded the opportunity of taking part in many challenging activities on and above the high school level.

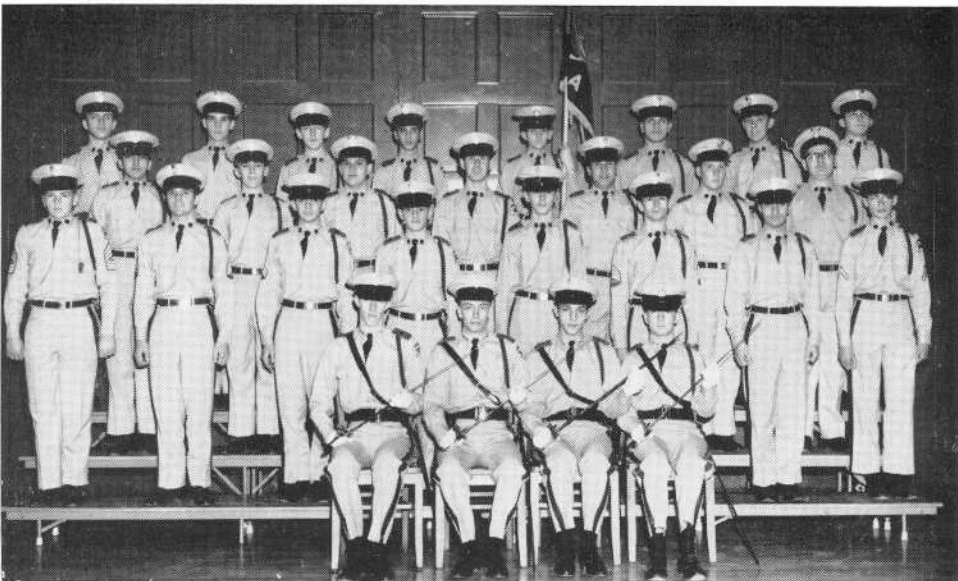
Perhaps most notable among this year's achievements is the participation of a varsity Chess team in the 1963 R. I. Chess League. Playing college and high school teams, the team compiled a respectable record in its first season of competition.

Other highlights of the year included a visit by the Southeastern New England Chess Champion, a "Durfee Open" chess tournament, and various school functions. The year has been successful, as summed up by a R. I. Chess Association official: "The activities of the Durfee High School Chess Club have constituted a significant forward step for chess in the area."

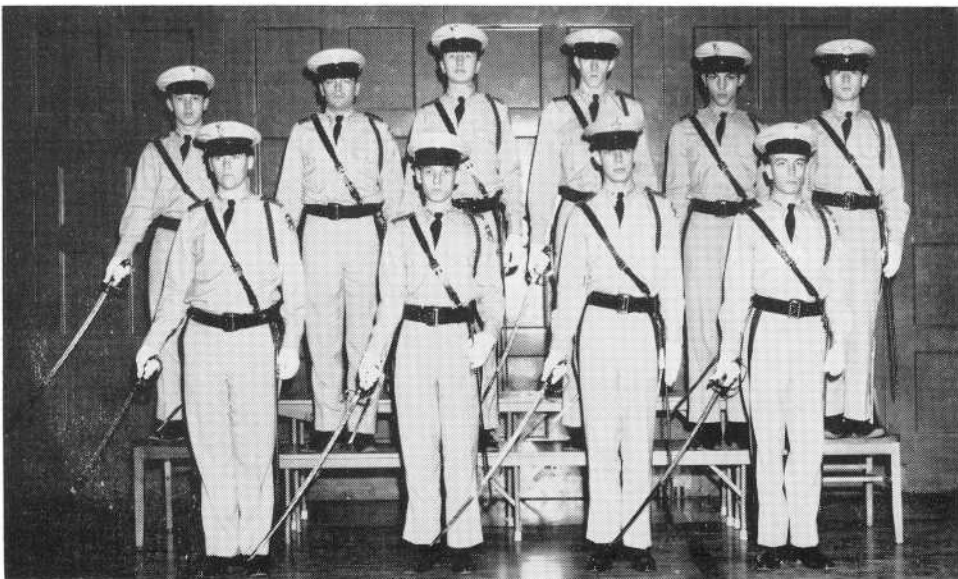


Lt. Col Michael Bednarz  
Commander

## CADET



Capt. E. Jeffrey Pontiff, C.O.

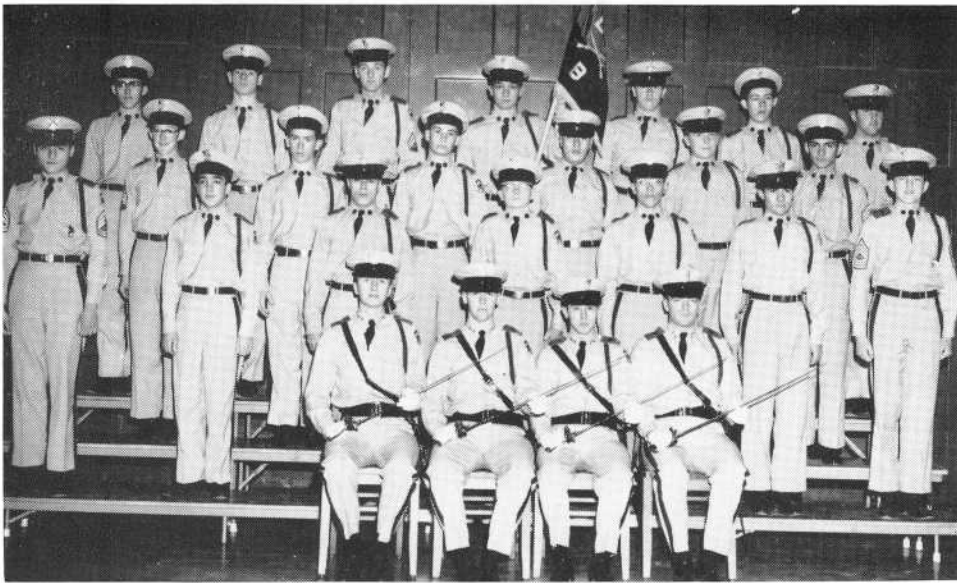


First row—Captain Harold Bartley, Major Vincent Smeriglio, Lt. Col. Michael Bednarz, Captain Jeffrey Pontiff. Second row—First Lt. John Dean, Second Lt. Richard Chapdelaine, Second Lt. Michael Landry, Second Lt. Thomas Sweeney, First Lt. Donald Facchiano, Second Lt. Edward Palmer.

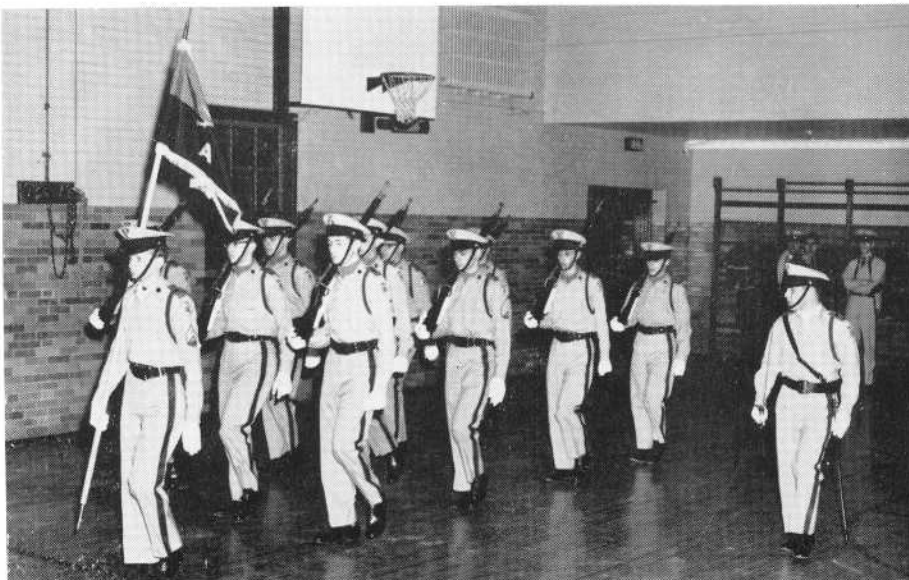
## CORPS



Major Vincent Smeriglio



Capt. Harold Bartley, C.O.



Drill Team





Left to right, first row—K. Timberlake, M. Gold, B. Zukroff, V. Smeriglio, J. Kane, D. Schaffer. Second row—P. Gutter, J. Barboza, D. Oldrid, E. Palmer, B. Manchester, S. Perlman, M. Speier, B. Duckett, B. Sugarman.

## CLASSICAL CLUB

The Classical Club was founded in October, 1955, to foster interest in the language, literature, and civilization of ancient Greece and Rome through pleasurable activities. Officers for 1962-1963 are Barbara Zukroff, consul (president); Vincent Smeriglio, praetor (vice-president); Cynthia Gold, censor (secretary) and Howard Slavitt, curule aedile (program chairman). Barbara Zukroff also served as censor for 1961-1962.

The following members of the class of 1963 have provided entertainment: Donna Schaeffer, Marcia Gold, Sybil Cohen, Marjorie Speier, June Cooperstein, Brenda Blume, Priscilla Chapman and Jennifer Kane.

The following have served on committees: Priscilla Chapman, Brenda Blume, Joyce Barboza, Carol Taylor, Marcia Gold, Jennifer Kane, Sharon Eskow, Beverly Ramos, Donna Schaeffer, Barbara Duckett, Margaret Pickering and Paula M. Laskowski.

The faculty advisor is Mr. A. Wilson Whitman.



Left to right, first row—S. Perlman, D. Oldrid, A. Levine, B. Sugarman, M. Schenker. Second row—M. Meagher, M. Speier, J. Lowney, E. Katersky, R. Moniz, C. Garant, M. Wisemon.

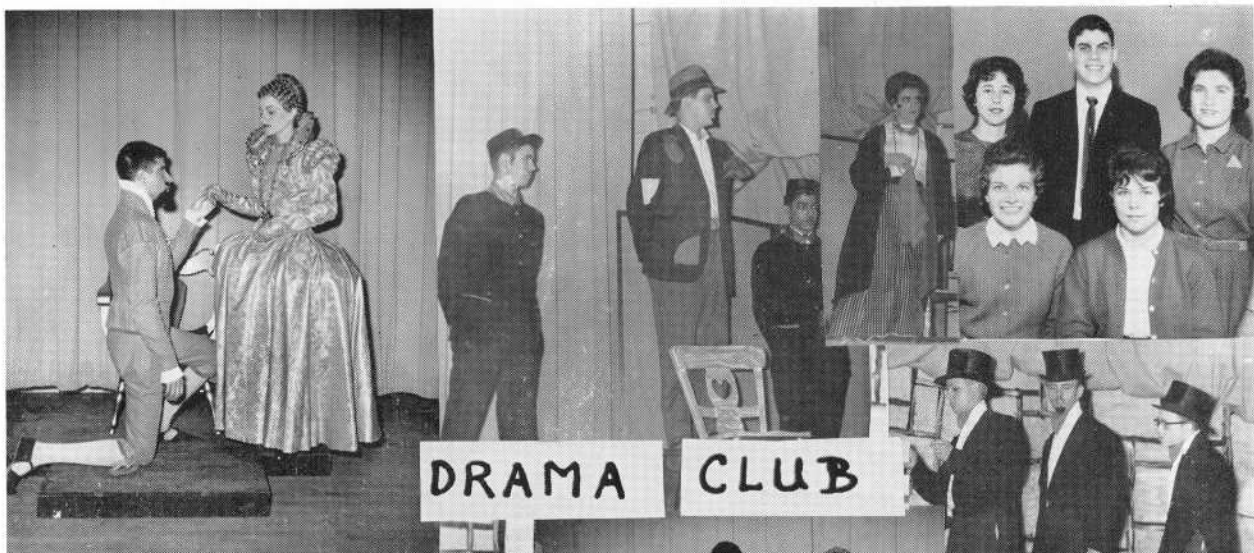
## DEBATE SOCIETY

The Debate Society is open to any student who wishes to increase his ability in effective argumentation. The society began the year with a mock debate to show new members the format of debating. A novice debate tournament in November further acquainted new members with the process.

The society was under the leadership of Alan Levine, president; Betty Sugarman, vice-president and treasurer; and Donna Oldrid, secretary. For his first time as debate coach Mr. William K. Coady ably advised us.

The most important event of the year was the Narragansett League Tournament. Durfee debaters participating in the 13-debate series were Carol Garant, Edward Katersky, Jeremiah Lowney, Alan Levin, and Robert Moniz, seniors; Peter Petri, a junior; and Ronald Lepas and Gerald Silk, sophomores. The topic was Resolved: That the United States Should Promote a Common Market for the Western Hemisphere. Durfee had a fair season with a 5-8 record.

After the interscholastic debates the society held another intra-society tournament. The society culminated a successful year with a beach party at Horseneck Beach.



## DRAMA CLUB





Left to right, seated—C. Hryciu, C. Metras. Standing—P. Berger, L. Rotenberg, M. Speier.

## FRENCH CLUB

Le Cercle Francais aims to increase the members' appreciation of the French language and culture. With this goal in mind we have followed each monthly business meeting with a French program.

Included in these programs were a library corridor display, a skit, a talk about a Paris visit, French songs and colored slides of France.

Officers are Carol Metras, president; Penny Berger, vice-president; Marjorie Speier, secretary; Lisa Rotenberg, treasurer; Carol Hryciu, program chairman.





Left to right, first row—P. Medeiros, B. Duckett, I. Costa, M. Speier, S. Martins, P. Holeyka, S. Leonardo. Second row—N. Botelho, G. Martin, M. Wiseman, B. Mellor, J. Isherwood, E. Carroll. Third row—M. Pickering, V. Sousa, B. Quong, R. Faris, T. Pasternak, P. Zmuda, D. Paiva, R. Proulx, C. Garant.

## GERMAN CLUB

Der Deutsche Verein, organized to stimulate interest in German culture, is open to all who have studied or are studying German.

The officers of the current year are President Barbara Mellor, Vice-President Marcia Wiseman, and Secretary Janice Isherwood. Membership in the club is 40.

The club has been active with the Science Club in planning activities such as a Christmas semi-formal, a skating party, and a trip to Boston. Its advisor, Miss Barbara Fischer, has highlighted the meetings with her descriptions of and experiences in Germany, of which she is a native.

This year, for the first time, the club, represented by Marjorie Speier, participated actively in "Rivoli," a German festival held annually at Boston University.





Left to right, seated—E. Arruda, C. Shifrin. Standing—M. Medeiros, J. Saurette, L. Gosselin.

## HEALTH CLUB

The club of 1960-1961 organized material and presented a movie on better vision at an assembly for the class.

A general display in the library corridor contained interesting and illustrative posters and pamphlets on visual fitness.

Throughout the year the officers cooperated with the Sanitation Commission in accomplishing their aims.

Officers were Joyce Saurette, president; Emily Arruda, vice-president; Madeline Medeiros, secretary; Lucille Gosselin and Clare Shifrin, advisory councilors. Faculty advisor is Miss Angeline B. Crispo.



Left to right, first row—B. Broughton, A. Smith, M. Pereira, C. Waite, M. Meagher. Second row—M. Ledo, C. Shifrin, J. Oliveira, E. Szynal, S. Ryerson, W. Silvia.

## THE HILLTOP

Our bi-monthly newspaper completed its 41st year of publication this June after much diligent work by the Journalism II class.

Michaeline Pereira headed the staff and Jean Oliveira was the business manager. Edward Szynal, Woodrow Silvia and Michael Ledo wrote boys' sports and Susan Ryerson and Jean Oliveira handled girls' sports.

Lisa Rotenberg wrote the column "Looking Ahead" and "Corridor Comment" was written by Alison Smith and Maureen Meagher. Susan Ryerson and Jean Oliveira co-authored "Kampus Kapers." "Dial 113" was written by Clare Shifrin and Carolyn Waite. "Flair and Foible" was the creation of Barbara Broughton.

Faculty advisor is Mr. John T. Crowley.



Left to right—B. Duckett, A. DeFarias,

## HOME ROOM DIRECTORS

Home Room Directors, largest active organization of the school, is made up of two directors, a boy and girl, from each home room.

At the beginning of the year a meeting of all directors is held under the supervision of the faculty advisor, Mr. James Panos. Directors elect a president who is a senior and a vice-president-secretary who is a junior.

Their duties consist of assisting in checking the daily attendance in the home rooms, in banking, and in reading bulletins. They also help conduct membership drives for the Student Activities Association and the Red Cross. Tickets for various dances are sold by home room directors.

The president this year is Barbara Duckett and vice-president-secretary, Andrew DeFarias.



Left to right—S. Herz, L. Bernstein, A. Reis.

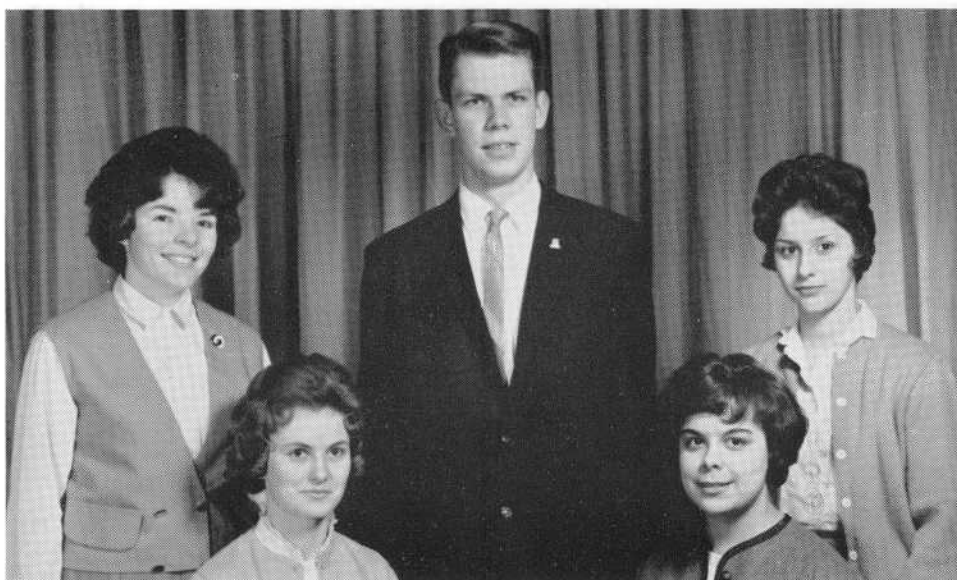
## CONTEMPORARY JAZZ SOCIETY

The Jazz Society, begun only this year, is now one of our largest clubs. Its activities have been varied and numerous.

Its most heralded activities have been two "live" jazz concerts and a television interview at which Mr. Edmond M. Machado, the advisor, and Larry Bernstein, club president, discussed their views on jazz and popular music in general. Proceeds of the last concert, "An Evening of Jazz," were donated to the Ambrose F. Keeley Scholarship Fund.

Although the society has sponsored these outstanding events, the real heartbeat of the organization is the informal discussions of jazz works and artists. These have proved to be rich experiences in appreciating a truly great art form and one of America's contributions to the cultural world.

Primary function of the society is to foster an understanding of and appreciation for jazz as a legitimate art form. Meetings are held the first and third Wednesdays of the month.



Left to right, seated—P. Bouton, P. Almeida. Standing—D. Gauvin, M. Bednarz, C. Torres.

## JUNIOR RED CROSS COUNCIL

The council is composed of students interested in improving and enriching the community. Representatives attend meetings of the chapter-wide council so that the Durfee council may be an integral part of its civic projects.

This year, as a special project, the council organized and produced an entertainment program for youngsters in local children's homes.

The response to the annual enrollment drive was so great that it was considered the most successful ever held in Durfee.

The Hospital Aide program, in which many girls devote three or more hours weekly to volunteer work in local hospitals, was again successful. A special awards assembly was held for those who did volunteer work in the Summer.

Officers are President Michael Bednarz, Vice-President Patricia Almeida, Secretary Diane Gauvin, Councilors Pauline Boutin and Carolyn Torres.





Left to right, first row—J. Cummings, S. Fairtile, B. Clark, L. Carreiro, R. Ciarpella. Second row—J. Barboza, C. Metras, D. Massoud, E. Ciarpella, K. Timberlake, P. Berger, N. Barboza.

## LIBRARY AIDES

Library Aides is a group of capable students who devote much of their free time to the Ambrose F. Keeley Library. Among their numerous duties are filing cards, preparing books for the shelves, working on corridor displays, issuing passes and helping students find research material.

This year the Aides were under the supervision of a new advisor, Mr. Owen T. McGowan. In April, some of the Aides planned a corridor display for National Library Week. Other activities included a bowling party, a visit to a college library in Boston, and a beach party.

The Aides are a necessity at Durfee for without them, the library would not be such a helpful place for students. It is certainly worthwhile to be a member of this organization for it not only enables an Aide to share in many activities, but also to give much of his time to others.



Left to right—J. Lowney, S. Eskow, R. Moniz.

## MATHEMATICS CLUB

Purpose of the club is to provide members with a means to delve more deeply into advanced mathematics. Discussions of various topics are presented by some members while others construct models for the library corridor display.

Throughout the year members participate in mathematics tournaments and fairs. They also take part in social activities, such as bowling parties and the annual beach party.

Officers are Jeremiah P. Lowney, president; Sharon Eskow, vice-president; Robert Moniz, secretary-treasurer.



Left to right, first row—N. Hart, P. Chapman, C. Waite, S. Burns. Second row—R. Cooper, A. McMahon, A. Borges, J. Haskins, J. Domingos, C. Kaczinski, J. Cooperstein.

## MUSIC DEPARTMENT

The Music Department consists of three sophomore girls' glee clubs, two senior girls' glee clubs, one boys' glee club, a band and an orchestra. There are several small vocal and instrumental ensembles which give programs for P.T.A.'s, hospitals, churches and other civic groups. The pep band plays for basketball games.

The large vocal groups perform for various assemblies during the year and also present Christmas and Spring concerts for the public. The band plays for football games, outdoor assemblies and parades, and presents a concert. The orchestra joins the vocal groups in assemblies and concerts, and plays for Class Day and Graduation.

## SILVERTONES



Left to right, first row—J. Pacheco, M. Almeida, D. Gosciminski, J. Cwiklik, M. Meagher, V. Larrivee, R. Cabral. Second row—A. Martin, D. Wingate, G. Hanson, M. Renn, J. Ciosek, C. Waite, N. Nowak, K. Delisle, N. Hague, S. Ferreira, P. Miranda.

## VOCALAIRES



Left to right, first row—L. Stafiej, J. Cooperstein, J. Skowron, S. Assiff, S. Burns. Second row—M. Howard, N. Hart, J. Kane, C. Shifrin, S. Matthias. Third row—S. Elias, P. Monsour, P. Chapman, C. Katzen, B. Zukroff, A. McMahon, R. Cooper.



Left to right—H. Kravitz, S. Perlman, S. Blumstein.

## NATIONAL HONOR SOCIETY

In this, its twenty-sixth year of existence, Mu Kappa Delta Chapter of the National Honor Society has continued to maintain the four governing precepts of scholarship, leadership, character, and service. This Spring, as is customary, a ceremony was held to induct new members, chosen from the top twenty-five per cent of the junior and senior classes. These students are expected to preserve the high principles of the organization.

In the Fall, the society has a coffee hour, and in the Spring, a tea to welcome the new members. Our chapter serves the student body by providing a tutoring service for pupils who need and desire help because of necessary absence. But, at Durfee, the National Honor Society is not basically a functional organization. Its main objective is to honor scholastic achievement. This, in the judgment of the society, is necessary and worthy both as a purpose and as an end in itself.

This year, Mu Kappa Delta has enjoyed the able leadership of President Stephen Perlman, Vice-president Herbert Kravetz and Secretary Steven Blumstein. The faculty advisors have been Mr. Robert J. Nagle, Miss Yolande Laliberte and Miss Mildred V. Carroll.





Left to right, first row—J. Ferreira, J. Borges, A. Rocha. Second row—M. Silvia, S. Furtado, C. Arruda, M. Dean, A. Pavao.

## PORTUGUESE CLUB

Members of this organization are offered the opportunity to become better acquainted with the Portuguese language, way of life, and traditions.

Several activities conducted by the club are molded to contribute for a better grade of students of the language and to maintain a good class enrollment.



Left to right—K. Timberlake, V. Saurette, K. Duilio, E. Arruda, M. Spellman, B. Slaven.

## SANITATION COMMISSION

Emily Arruda, president, and Miss Angeline B. Crispo, advisor, opened the 1962-63 season with a meeting to elect officers. Chosen from the home room health councilors were Kathleen Duilio, vice-president, and Peggy Spellman, secretary.

Membership is composed of all health councilors elected at the beginning of the year to represent home rooms. The executive board is made up of the officers, six members of the lower council and the five officers of the Sophomore Health Club.

The commission is the authorized body which makes and enforces sanitation and health rules for the school. Violators are brought before the board, tried, and punished, if found guilty.



Left to right—P. Roberts, S. Bernstein, S. Eskow, C. Boudreau.

## SCIENCE CLUB

The Science Club has a three-fold purpose: academic, social and service. At the bimonthly meetings films, talks and demonstrations of a scientific nature are presented. Academic highlights in this year's programs have been a Science Project Idea Day and the local premiere of two films, *The Mastery of Space* and *Telstar*. *Mastery of Space* included official films of John Glenn's first orbital flight, and *Telstar* was a colorful and informative history of the Telstar communications satellite.

The club held its annual Christmas Semi-Formal to which the Chess and German Clubs were invited. In April a roller skating party was held.

The annual excursion to Boston to visit the Museum of Science, Haydn Planetarium and the State Science Fair is perhaps the most enjoyable event on the club's social calendar. The final social event is the annual beach party.

This year the club continued a project begun two years ago, the renovation of the observatory. Regular weekly workparties were held from September to June. The observatory committee presents lectures and demonstrations for the benefit of church, scouting and educational groups. Members also serve the school and community by serving as guides at the High School and Regional Science fairs.

The club is affiliated with Science Clubs of America, and Future Scientists of America. Mr. James W. Pelletier acts as faculty advisor. Carl Boudreau is president; Sharon Eskow, vice-president and Lawrence Bernstein, secretary.



Left to right—J. Barboza, J. Cummings, K. Timberlake, B. Borden, M. Spellman.  
Second row—P. Gutter, C. Metras, S. Grandfield, E. Arruda, C. Waite, M. Schenker,  
L. Gosselin, D. Schaeffer.

## SPANISH CLUB

The Spanish Club, El Circulo Espanol, promotes interest in the customs, culture and life of Spanish-speaking countries. The club is open to all students taking Spanish.

At the meetings programs about the Spanish language and countries are presented. This year, an exhibit was held in the Keeley Library corridor, displaying various items from Spanish-speaking countries.

Officers are President, Kathy Timberlake; Vice-President, Barbara Borden; Secretary, Judy Cummings; Treasurer, Joyce Barboza and Program Chairman, Peggy Spellman.



Left to right, first row—L. Stewart, B. Duckett, M. Cabral, B. Sugarman, L. Rotenberg, M. Earle, I. Costa. Second row—J. Cooperstein, N. Barboza, E. Palmer, J. Kane, V. Smeriglio, M. Gold, S. Perlman, S. Cohen, B. Blume. Third row—B. Zukroff, B. Clark, S. Blumstein, A. Levine, N. Somer, B. Manchester, E. Ciarpella, R. Moniz, B. Slaven, R. Trieff, M. Speier.

## SPEAKERS BUREAU

The Speakers Bureau is an organization the primary function of which is to promote better speaking at Durfee. At each meeting, two members are called upon to give prepared talks on subjects they have selected.

The topics this year were especially diverse, ranging from a discussion of folk music, given by Sybil Cohen and Marcia Gold, to one on a model United Nations. Arranged by Michaeline Perteira and Michael Sullivan, a visit to a local radio station proved to be both interesting and unusual. Members were most fortunate in that many of the speeches presented were supplemented by the use of the record player, tape recorder, and slide projector.

One of our most informative meetings was conducted by Norman Somer who outlined the plans for the growth and development of Fall River. Speeches of a less serious nature have dealt with humor in America, presented by Rebecca Trieff and Marjorie Speier, and an audio-visual tour of Europe conducted by Deborah Levy through slides she made on her trip there.

Members receive double benefits in that they not only gain valuable experience in speaking publicly but also are able to enjoy the stimulating speeches of their fellow members. The club meets every first and third Friday of the month under the supervision of President, Jennifer Kane; Vice-President, Vincent Smeriglio; Secretary, Marcia Gold and Advisor, Miss Elizabeth Leonard.



## WORLD HISTORY CLUB



Left to right—S. Bramorski, S. Duperre, N. Paul, J. Kehoe, K. Shabshelowitz.



**SPORTS**





Left to right, first row—P. Trzenski, E. Souza, F. Collins, D. Solmon, J. Conforti, D. Botelho, R. Buffington, R. Bonalewicz, R. Landry, A. Robillard, R. Greeson. Second row— G. Potts, V. Schieri, D. Michaels, A. Arruda, W. Cooper, R. Klimka, J. Souza, G. Lavoie, R. Farias, J. Feijo, D. Bouchard, C. Harrington, R. Smith. Third row—J. Amaral, J. Fachada, A. Wood, E. Bryant, M. Shaughnessy, J. Hinchcliffe, J. Karam, J. Mills, W. Carey, C. Woodward, A. Gauthier, D. Howarth, J. Joaquin.

## FOOTBALL

The football squad under Coach Donald Montle compiled a 5-3 record while capturing third place in the Bristol County League.

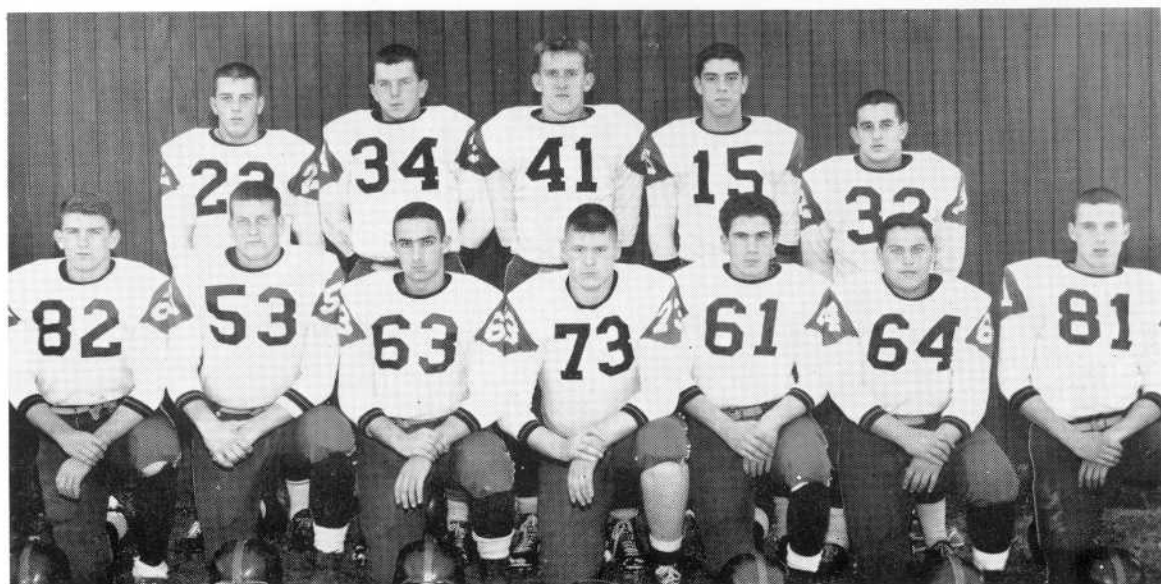
The Red and Black gained decisions over Attleboro 7-0, New Bedford Vocational 20-8, Fairhaven 28-12, Taunton 20-6, and Coyle 34-14. They were beaten by North Attleboro 12-0, and Bishop Stang 26-8 in league encounters. In the Thanksgiving classic, New Bedford took a 12-0 verdict.

New Bedford defeated Durfee at rain-soaked Alumni field before a hardy throng of 10,000 fans. Bob Knowls scored the Whalers first touchdown on a 40-yard run. Paul Mandeville broke away for a 65-yard romp to score the visitors second touchdown. Ricky Buffington ended three other New Bedford threats by intercepting passes in Hilltopper territory.

Defensive standout, Ray Landry, was presented the Jake Reagen Memorial Trophy, and Ricky Buffington and Dave Botelho received the coaches' awards for football proficiency.

Football letters were presented to seniors Botelho, Buffington, Frank Collins, Joe Conforti, John Hinchcliffe, Landry, Allan Robillard, Ray Rosa, Don Solmon, Eugene Souza, Paul Trzesinski and Joe Joaquin.

## OFFENSE



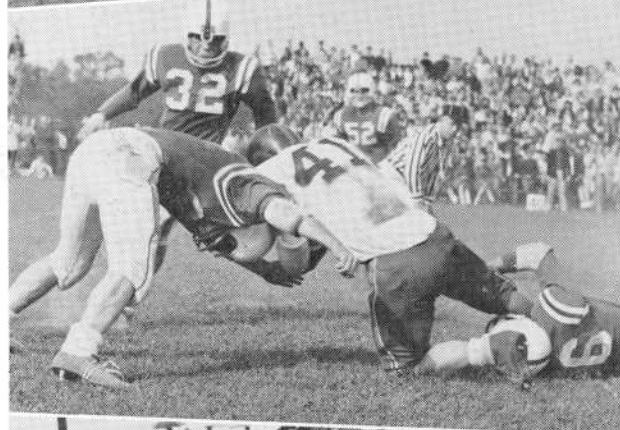
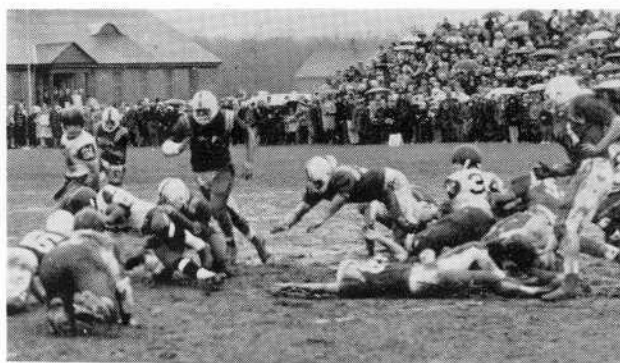
Left to right, first row—D. Solmon, R. Landry, J. Conforti, G. Lavoie, A. Arruda, R. Greeson, W. Carey. Second row—W. Mackie, W. Cooper, R. Klimka, R. Farias, D. Botelho.

## DEFENSE



Left to right, first row—A. Arruda, D. Bouchard, J. Feijo, P. Trzenski, J. Souza, R. Greeson, R. Landry, J. Conforti. Second row—R. Buffington, F. Collins, R. Klimka, D. Michaels, D. Botelho.











Left to right, front—R. Bonalewicz, J. Isidor, E. Berube, E. Siegfried, R. Knowe, Coach Karam. Second row—T. Keithley, J. Sullivan, B. Petty, R. Farias, J. Cook, F. Collins.

## BASKETBALL

The basketball team had a fine season under Coach Thomas Karam. They captured Portsmouth (N.H.) tournament and Bristol County League titles.

The Red and Black took the B. C. L. crown with a 13-1 slate, losing only to Coyle. The team also dropped a non-league decision to Rogers of Newport and were defeated by Ringe Tech in the Tech Tourney finals.

A fabulous 23-3 total record was compiled by the excellently drilled unit. They displayed great team work and sportsmanship throughout the campaign. Captain Berube, a four-year player, was the center of the well balanced team. His presence was felt both on offense and defense. He was the team's top scorer. He had a record of appearing in 77 straight games before he missed the Coyle encounter.

Ed Siefried was the big man in the Durfee attack. Jack Isidor was probably the finest outside shooter in the county. The steady hand of Bob Bonalewicz was another reason for Durfee's fine record. Bonny was all heart on the floor and no player could match his second effort and hustling play.

Tom Keithly and Ron Knowe were two fine guards. They set up plays with great skill and demonstrated excellent dribbling.

Berube, Isidor, and Siefried were named to the All-County squad and Bonalewicz received a berth on the second team. Knowe and Keithly were given honorable mention.

Great strength could also be found on the bench with Bob Farias, John M. Sullivan, Jim Cook, Brad Petty, John Sullivan and Frank Collins.

## SPRING SPORTS

The program is just beginning as we go to press.

Prospective starters in baseball include Eric Isadore and Pete Levesque, pitchers; Bob Bonalewicz, catcher; Joe Conforti, Larry Greenwood, John Maltezos, Jim Cook, George Potts and Ricky Buffington, outfielders; Ed Berube, Dave Botelho, Ron Knowe and Bob Klimka, infielders.

With a crop of promising rookies and a nucleus of dependable veterans Coach Borden is readying his trackmen for a successful campaign. Captain Dick DaRosa, Don Solmon, Mike Carey, Jeff Addison, Bob Costa and Bob Miller are senior squad members.

Coach Jordan's netmen, with six holdovers, entered the Southeastern Massachusetts Tennis League with fine potential. Captain Bryan McMahon, Gerald Pietruszka, Ed Katersky, Steve Blumstein, Ron Desrosier and Frank Kitchen are the seniors on the squad.

The golf team under Coach Nugent will participate in an 11-match schedule. Jim Clithero and Brad Steever are the veterans.

## SOCCER

The soccer team, under Coach David Sullivan was 2-10 in its second Bi-State League season and 3-10 over all.

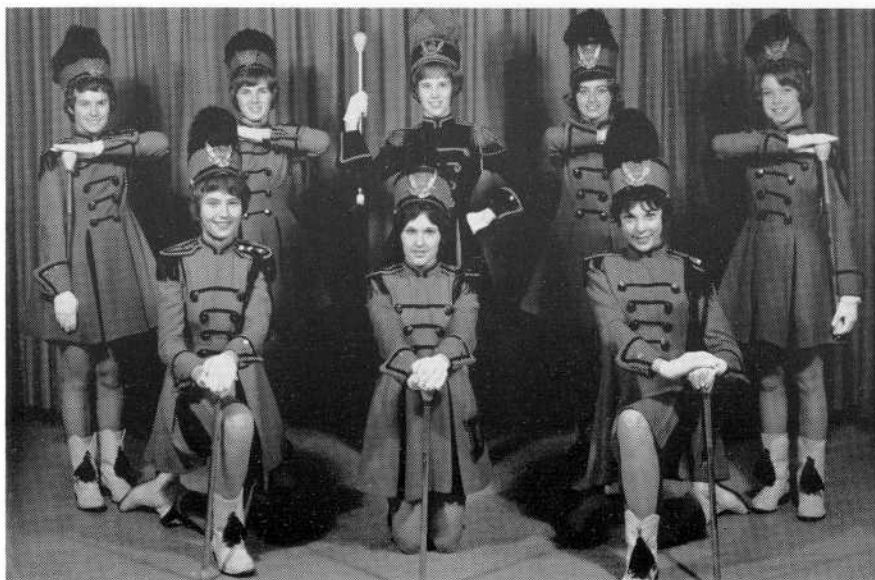
Two Red and Black stars was named to the 1962 All Bi-State Team voted by League coaches. Tony Furtado at halfback and Tom Kwan at forward were the players selected.

Seniors who received letters were: Nuno Barboza, Michael Carey, James Cook, Antone Furtado, Lawrence Greenwood, Robert Kitchen and Robert Pacheco.

## CHEERLEADERS



Left to right, kneeling—A. Cloutier, M. Stetkiewicz, J. Nawrocki. Standing—N. L'Archevesque, S. Fairhurst, N. Bird, L. Woltman.



Left to right, kneeling—B. Dziok, J. Belanger, E. Cavanaugh. Standing—J. Ellis, J. Boardman, M. Ragsdale, S. Cameron, B. Birchenough.

## MAJORETTES

The lively routines and colorful uniforms of the majorettes are present wherever the Durfee band is seen.

This group of eight girls helps to foster school spirit by producing original routines for pep rallies, football games, and the Tech Tourney at Boston Garden. At the end of the year's activities they look forward to competing with majorettes from other schools throughout the state in the Southeastern Massachusetts Music Festival.

At the annual football banquet each girl receives a D with a baton insignia for her years work.

In the Spring, tryouts are held for sophomore girls who have a mark of 70 percent in all subjects. The four finalists are selected by faculty members and the senior majorettes.

The head majorette is chosen at the end of her junior year by the band director and majorette advisor. She is selected on the basis of her leadership qualities, twirling ability, and sense of rhythm.

Many thanks to Vice-principal Alice Harrington for her kind guidance.





Left to right, kneeling—F. Lyons, G. Motta, M. Leite, N. Cook, D. Woodward. Standing—S. Martins, W. Zinser, S. Ryerson, E. Griffin, B. Oliveira, J. Oliveira, G. Rezendes.

## GIRLS BASKETBALL

This has been the first time in eight years that the Girls' Varsity Basketball Team has captured a top position in the Bristol County League playoffs. Although their defeat was by one point the girls displayed the skill and sportsmanship that Durfee has always tried to demonstrate.

The squad of 13 players closed the season with a record of nine wins and two defeats.



Left to right, first row—G. Rezendes, P. Richards, A. Mewald, M. Leite, B. Oliveira. Second row—C. Moniz, J. Skowron, F. Lyons, D. Woodward, M. Cabral.

## GIRLS NUMERAL CLUB

The club consists of a well organized group of girls whose objective has been (and always will be) to promote good sportsmanship and to develop leadership.

Each member of the club must participate in four activities during the school year. Some of the sports offered are volleyball, badminton, (singles and doubles) fistball, softball, and basketball for sophomore girls.

In September membership is opened to junior and sophomore girls. They are usually chosen for their initiative and eagerness to participate in the sports program.

At Christmas time the G. N. C. holds a reunion for its alumnae. The graduates test their skills against our varsity team and the outcome is sometimes very surprising.

In the Spring the annual outing is held. When yearly awards are presented.

Although there are many activities offered, the girls who join must show their eagerness to help one another for this is where good sportsmanship and leadership begin.

Officers are President, Ann Mewald; Vice-President, Carol O'Connell and Secretary, Frances Lyons.

BEST WISHES  
from  
FALL RIVER AREA  
C. Y. O.



President, HENRY GILLETTE  
Vice-President, MARIAN MELLON  
Treasurer, ROBERT BERUBE  
Secretary, GLORIA RAPOSA '63  
Youth Adult Advisor, MISS MARY E. CRONIN  
Moderator, REV. WALTER A. SULLIVAN

SUCCESS  
To the Class of 1963  
  
YOUNG ADULTS COMMITTEE  
of  
Fall River Area  
Catholic Youth  
Organization

President, FRANCIS COLLINS '63

Vice-President, EDWARD BERUBE '63

Secretary, MARIE STETKIEWICZ '63

Treasurer, CLAUDETTE LETENDRE

**SUCCESS . . .**

**To The Class of 1963**

**LORING STUDIOS**

**392 SPRING STREET**

**Opposite St. Mary's Cathedral**

**Telephone OS 8-5022**



CONGRATULATIONS

TO THE

CLASS OF 1963

**DURFEE HIGH BOOSTERS CLUB**

Organized 1954

---

CONGRATULATIONS TO

CLASS OF 1963

**DURFEE-BUFFINTON INSURANCE AGENCY, INC.**

10 PURCHASE STREET

A. T. Buffinton

Walter A. Brown, Jr.

Arthur E. Mead

OS 9-6486

OS 5-7481

Richard J. Barresi, General Manager

BEST WISHES  
TO  
CLASS OF 1963  
  
FROM  
**FALL RIVER KNITTING MILLS**

---

FIRST STEP TO A BRIGHT FUTURE  
CONGRATULATIONS  
CLASS OF 1963  
  
FROM  
**MASON FURNITURE CO., INC.**  
"FURNITURE WONDERLAND OF THE EAST"

COMPLIMENTS OF

**CHERRY & WEBB**

FALL RIVER'S

LEADING FASHION STORE

Telephone OSborne 9-6411

---

Telephone OSborne 2-2861

**NORA'S**

**COLONIAL RESTAURANT**

HOME COOKING

38 NORTH MAIN STREET

FALL RIVER, MASS.

Owned and Operated by

Walter J. and Nancy E. Smith

---

**VIVE SOCIETY**

President, BARBARA DUCKETT

Vice-President, BARBARA CLARK

Secretary, BARBARA LONSDALE

Treasurer, SUSAN GRANDFIELD

Chaplain, JANET HASTIE

---

**FALL RIVER GAS COMPANY**

155 NORTH MAIN STREET

Go Modern — Go Gas

Compliments of

**MY OWN QUALITY BAKERY**

345 ROBESON STREET  
RODMAN STREET

Home of Lipson's  
Bakery Products

---

BEST WISHES

CLASS OF

1963

**RILEY BROTHERS**

TIVERTON, RHODE ISLAND

Compliments of

**R. A. McWHIRR COMPANY**

169 SOUTH MAIN STREET

Fall River's  
Largest Department Store

---

Compliments of

**FALL RIVER HERALD NEWS**

## BETA TRI-HI-Y

### OFFICERS

President ..... Bette Taylor  
Vice-President ..... Michaeline Pereira  
Secretary ..... Brenda Dziok  
Treasurer ..... Cheryl Harvey

### SENIOR MEMBERS

Donna Shaffer  
Paula Laskowski

## GAMMA TRI-HI-Y

### OFFICERS

President ..... Inge Costa  
Vice-President ..... Barbara Duckett  
Secretary ..... Martha Golz  
Treasurer ..... Kathleen Timberlake  
Chaplain ..... Barbara Carroll

### SENIOR MEMBERS

Rhonna Appel	Nancy L'Archevesque
Barbara Borden	Marilyn Levis
Paula Burstein	Nancy Lovit
Susan Grandfield	Helen McInnis
Phyllis Gutter	Francine O'Neil
Jocelyn Hochberg	Margaret Pickering
Janet Hastie	Susan Smith
Marie Stetkiewicz	
Adult Adviser — Miss Barbara Fischer	

## ALPHA TRI-HI-Y

### OFFICERS

President ..... Lillian Costa  
Vice-President ..... Janice Longchamps  
Secretary ..... Barbara O'Neil  
Treasurer ..... Mary Ann Coelho  
Chaplain ..... Ruth Souza  
Historian ..... Joyce McCoy

### SENIOR MEMBERS

Jacquelyn Pereira	Sandra Maia
Geraldine Rogers	Cheryl Rezendes
Geraldine Souza	Betty Read
Elaine San Marcos	Evelyn Carreiro

## FALL RIVER ACADEMY OF BEAUTY CULTURE

Est. 1933

Learn Creative Hairstyling  
Both Practical and Advanced  
Complete Dependable Training  
Co-Ed. Day, Evening and  
Part Time Classes

FREE PLACEMENT SERVICE  
V. A. APPROVED

Convenient Tuition Payments

Call OSborne 2-4751

44 NORTH MAIN STREET  
FALL RIVER, MASS.



**Lavoie's**

JEWELERS — OPTICIANS

238 South Main Street

Corner Spring Street

---

Congratulations

**Durfee Bowling Alleys, Inc.**

340 Central Street

---

**Hall's Music Store**

169 North Main Street

Everything for the Music Lover

---

**Robert A. Wilcox Co.**

22 Bedford Street

STATIONERY

SCHOOL SUPPLIES

Tel. OS. 9-6161 Evenings by Appointment

**Robert's Fur and Formal Shop**

FULL DRESS RENTAL SERVICE

White Tuxedo Jackets — Tuxedo  
Tail Coats — Cutaways  
and All Accessories

383 Spring Street

Next to St. Mary's Cathedral

---



**Lenor's**  
*"where fashion is fun"*

---

**Henry J. Feitelberg**

INSURANCE

TRAVEL

REAL ESTATE

29 North Main Street Fall River

Tel. OSborne 5-7408

---

OSborne 3-3957

**Torchia Photographs**

Portraits — Weddings — Commercial

Graduation Portraits

368 South Main Street

Fall River, Mass.

TO THE CLASS OF '63  
BEST WISHES FROM EVERYONE  
AT



298 South Main Street

Best Wishes  
from

**T. Elias Fuel Co., Inc.**

52 Oak Grove Avenue

Compliments of

**S. S. Kresge Company**

Best Wishes

from

**Walter C. Frazee Co.**

9 North Main Street

Telephone OS. 2-5315

**Mullen Studio**

PROFESSIONAL PHOTOGRAPHERS

Student Specials

Candid

3D-Color

Formal

Portraits and Commercials



130 South Main Street Fall River

Hudner Building

**Maury Kusinitz**

Chartered Life Underwriter

LIFE AND GENERAL INSURANCE

17 Second Street

Tel. OS. 4-3595

**Touhey's Pharmacy**

202 Rock Street

Fall River, Mass.

Prescription Specialists Since 1883

FALL RIVER

MOST MODERN PHOTO LAB

**Sousa's Photo Service**

34 Borden Street

Compliments of

**Normand's**

195 South Main Street

UNIVERSITY SHOP

Sizes 34 to 42

---

Compliments of  
the new

**Sawyer's  
Campus Shop**

Second Street

---

**Murray's Pharmacy**

Frank Murray, Registered Pharmacist

150-154 New Boston Road

Fall River, Mass.

Telephone OS. 8-5872

---

**The Hub**

S. Gourse and Sons

Fall River's Largest Apparel Store  
For Men and Boys

162 Pleasant Street  
Corner of Troy Street

FREE PARKING

Telephone OS. 7-9409

**Mullen Bros.**

Jewelers Since 1893

254 South Main Street

---

**Wilbur's**

186 South Main Street

Fall River, Mass.

---

**O. Dumont**

JEWELER and OPTICIAN

1424 Pleasant Street

Fall River, Mass.

---

**Al Rainone's  
Modern Music Shop**

382 South Main Street

Telephone OS. 6-8428

DOWTY'S FLOWER SHOP

1492 Pleasant Street

Dial OS. 3-3431

---

COMPLIMENTS OF  
LOUIS A. HORVITZ

---

COMPLIMENTS OF  
SMITH FLOWERS

1368 Pleasant Street

Telephone 8-0180

---

COMPLIMENTS OF  
EMPIRE  
MEN'S AND BOY'S SHOP

174 South Main St. 1375 Pleasant St.

OS. 3-0322

OS. 2-4459

---

COMPLIMENTS OF  
CHARLMOR FURNITURE CO.

1438 Pleasant Street

Telephone OS. 3-0072

---

DR. ALVIN H. SERVITA  
OPTOMETRIST

Contact Lenses

---

YOUR CREDIT IS GOOD AT  
LION'S

84 Bedford Street

---

Telephone OS. 2-3821  
PARIS CURTAIN AND  
DRAPERY SHOP

208-210 South Main Street

Fall River, Mass.

---

HIGHLANDS 5 & 10

801 Robeson Street

No Parking Problems

---

PLEASANT SUPER MARKET

1402 Pleasant Street

Telephone 677-9601

---

CASUAL SHOP

"The Little Store That Brings  
Fashions To The Flint"

---

COMPLIMENTS OF  
MOHICAN CO., INC.

36 North Main Street

Telephone OS. 5-7791

---

STYLE SHOP

1409 Pleasant Street

Telephone OS. 4-9712

---

COMPLIMENTS OF  
MARK YOU RESTAURANT

---

COMPLIMENTS OF  
ASHTON SPORTING GOODS

---

Telephone OS. 2-7362  
LAFAYETTE SHOE STORE  
INC.  
FALL RIVER'S  
LARGEST INDEPENDENTLY OWNED  
FAMILY SHOE STORE  
1347 Pleasant Street  
Fall River, Mass.

---



*What's the meaning of this?*

These queer shapes are halftone dots picked at random from a plate and greatly magnified. Seemingly insignificant, these microscopic dots are the prime concern of photo-engravers.

Their perfection is assured with Barbett engravings.

BARBETT PHOTO ENGRAVING CO., INC. 221 W. EXCHANGE ST., PROVIDENCE 3, R. I.



**LABECKI'S HIGHLAND GULF**

1929 Highland Avenue

Telephone 678-5064

---

COMPLIMENTS OF

**DURFEE FACULTY BOWLING  
LEAGUE**

**Levesque's Flower Studio**

110 Lafayette Street

BEAUTIFUL FLOWERS  
FOR ALL OCCASIONS

Telephone 3-8116

---

**BONNER FLOWERS**

2082 ROBESON STREET

FLOWERS — Always Fresh

Funeral Flowers  
Churches

Corsages  
Hospital Arrangements

Telephone OS. 5-7804

---

**ACKNOWLEDGEMENT**

The editor and staff of this publication are grateful for the assistance rendered by many persons to make the book a success.

We would specifically like to thank our classmates, club officers and advisors for submitting photography and information; the printers, engravers, photographers, and binders for their professional services; the Fall River Herald News for furnishing valuable photographs, particularly of our athletic activities; our advertisers, whose financial assistance helped make the book possible.

We are especially grateful to Miss Katherine L. Hogan and Mr. John T. Crowley, the faculty advisors who have guided our steps and to whom the Senior Class is greatly indebted. We also wish to thank Mr. William Bradbury of the faculty who assisted Miss Hogan with her work.

# Autographs